

Planning Department

Uptown Community Plan Update Draft Recreation Element

Park and Recreation Board
June 16, 2016

Agenda Item 102 - Action

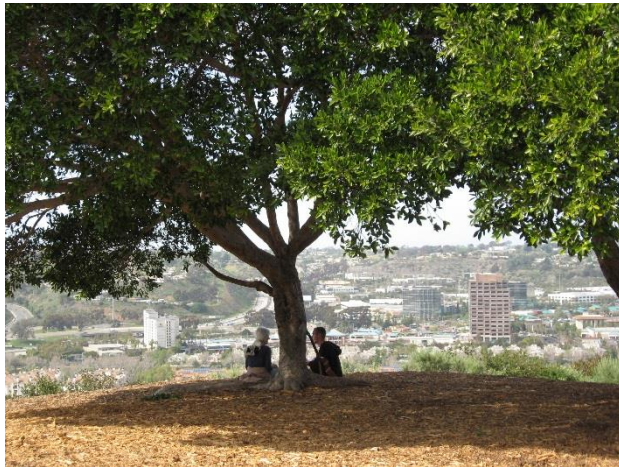
Goals of the Recreation Element Update

Current Population: 38,900

Existing Parks: 18 acres

Projected Population: 55,700

Required Parks: 156 acres



Public Outreach

2009-2011: Public Workshops; CPU advisory committees; Charrettes; Park & Recreation Opportunities Analysis; Park and Recreation Needs Assessment (Survey).

2012-2013: Potential Park Site Evaluations/Matrix; Planning Commission Workshop; Discussion Draft CPUs.

2014: Equivalencies Presentations – Balboa Park Committee, and Morley Field Recreation Council; Park and Recreation Board/Planning Commission Joint Workshop; First Draft CPUs.

2015-2016: Revised Draft CPUs; Draft PEIR; Balboa Park Committee recommendations; CPG recommendations; Park and Recreation Board recommendations; CPU Adoption.



Guiding Documents

Parks and Recreation Needs Assessment (Survey)

- ☐ Methodology
- ☐ Key findings
- ☐ Balboa Park opportunities



Balboa Park East Mesa Precise Plan

- ☐ Pershing Sports Complex

Recreation Element format

7.0: Goals and Introductory Discussion

7.1: Parks and Recreation Facilities

- ☐ General Plan Standards
- ☐ Table 7-1: Inventory of Existing and Proposed Parks and Facilities
- ☐ Table 7.2: Parks and Recreation Facilities Summary

7.2: Preservation

7.3: Accessibility

7.4: Open Space Lands and Resource-based Parks

Population-based Parks:

Existing

- ☐ Mission Hills / Pioneer Memorial Park
- ☐ Old Trolley Barn Park
- ☐ West Lewis Street Pocket Park



Proposed

- ☐ Mystic Park
- ☐ Reynard Way NP
- ☐ Bandini Street PP
- ☐ Fir Street PP
- ☐ 1st & Robinson PP
- ☐ Golden Gate Drive PP
- ☐ Laurel Street PP
- ☐ Olive Street PP
- ☐ Sixth Avenue PP
- ☐ W. Lewis Street PP – Expansion
- ☐ W. Maple Canyon PP

Recreation Centers

☐ Existing: None

☐ Proposed:

☐ Grant K-8 School Gymnasium

☐ Uptown Recreation Center – North

☐ Uptown Recreation Center - North

Aquatics Complex

☐ Existing: None

☐ Proposed:

☐ Uptown Aquatics Complex

Resource-based Parks

- ☐ Freedom Park
- ☐ Nate's Point Dog Off-leash Area
- ☐ Pershing Recreation complex
- ☐ Presidio Neighborhood Park
- ☐ Quince Street Mini Park
- ☐ Sixth Avenue Children's Park



Joint Use Facilities

- ☐ Birney ES
- ☐ Florence ES
- ☐ Grant K-8
- ☐ Roosevelt MS

Non-traditional Park Site

☐ Normal Street Linear Park



Trails in Open Space

- ☐ Bankers Hill
- ☐ Buchanan Canyon
- ☐ Curlew Canyon
- ☐ Cypress Canyon/Marston
- ☐ Hospice Point
- ☐ Maple Canyon
- ☐ Mission Hills
- ☐ University Heights



Summary of Park Acreages

Existing Park Acreage

18.21 ac.

Proposed Park Acreage

36.85 ac.

TOTAL: Existing + Proposed Park Acreage

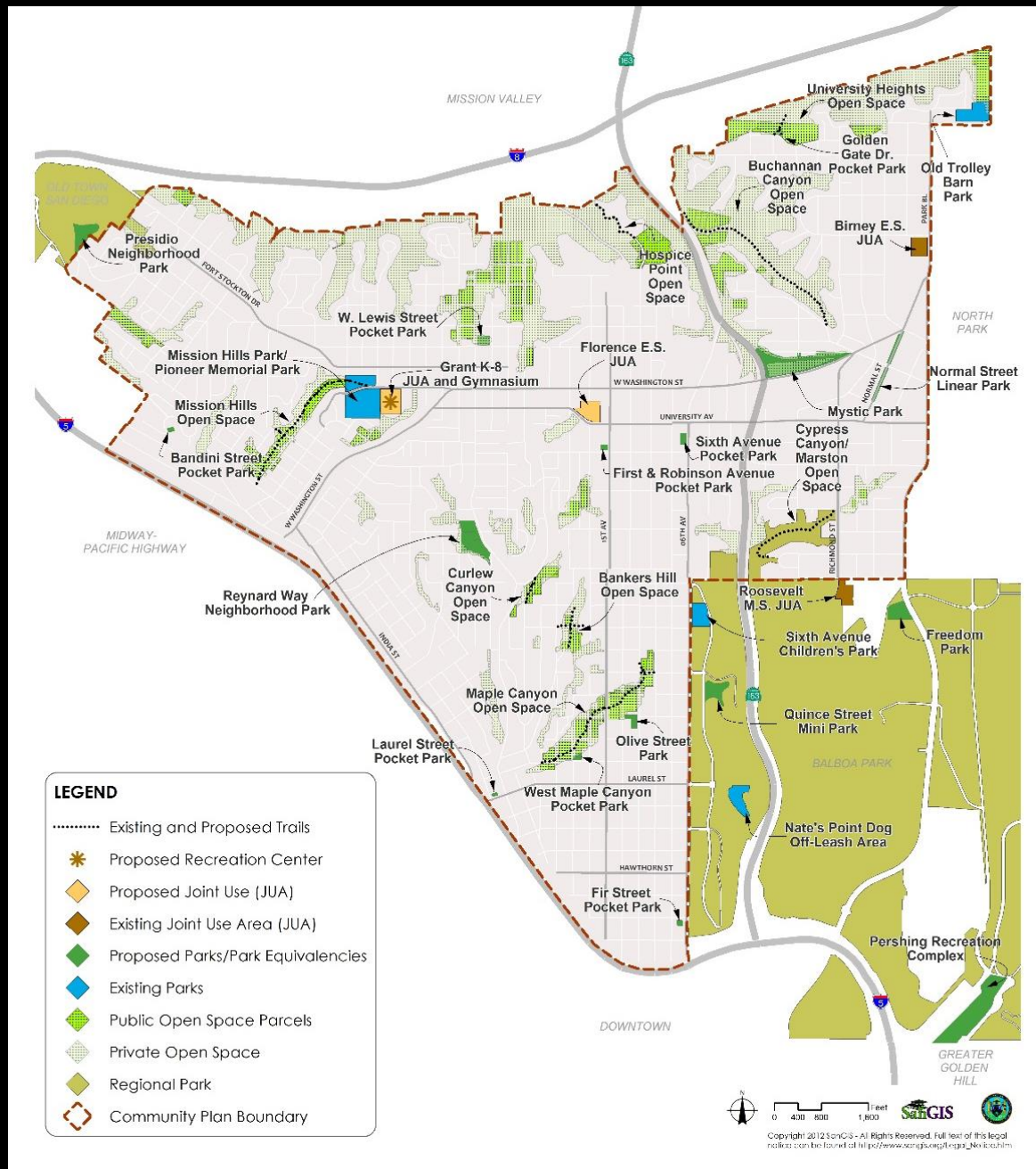
55.06 ac.

Required Park Acreage

155.96 ac.

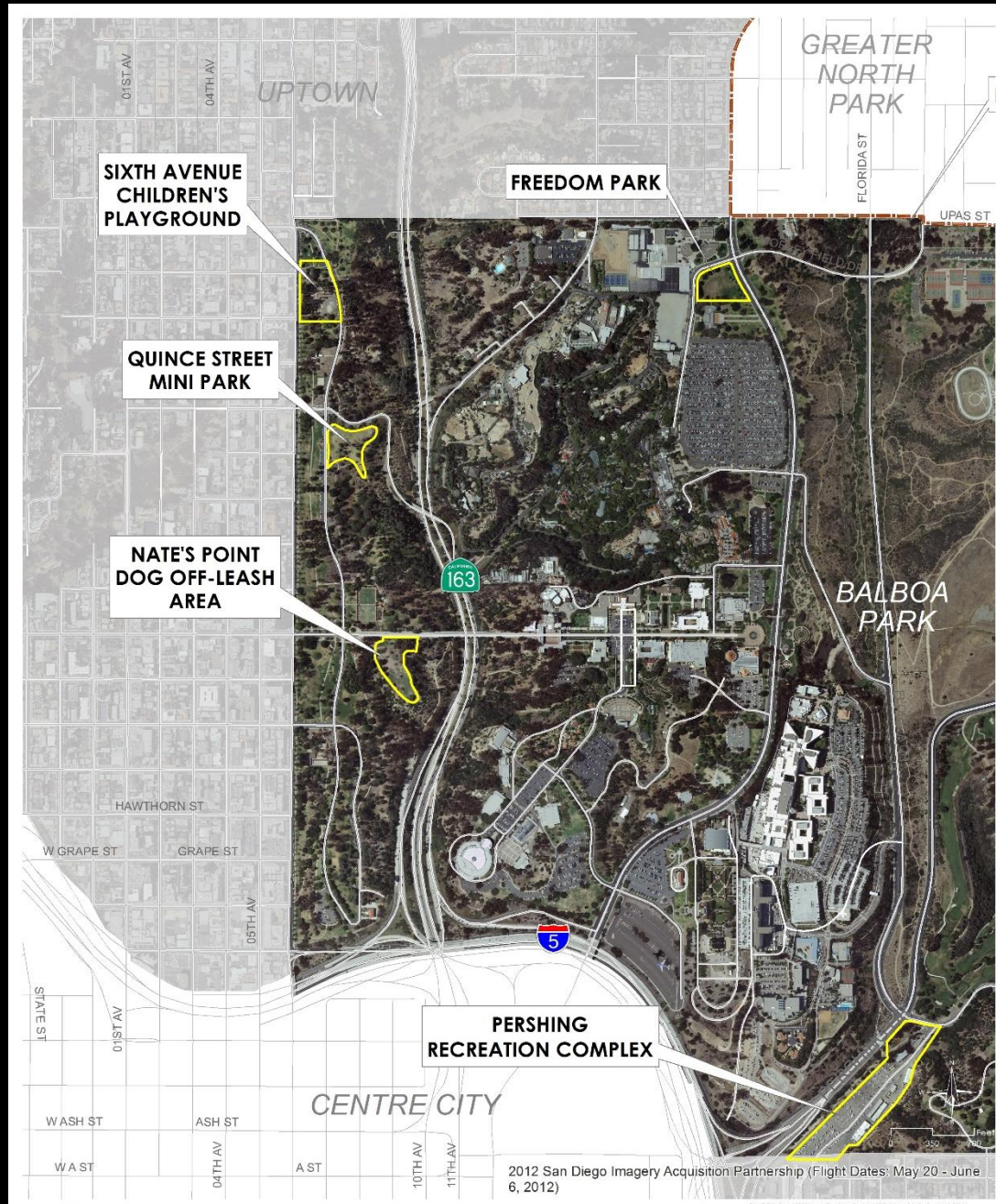


Parks, Recreation Facilities and Open Space



Planning Department

Staff recommends that the
Park and Recreation Board
recommend approval of the
Uptown Community Plan Update –
Draft Recreation Element



Balboa Park Proposed Equivalency Sites serving Uptown



Balboa Park Proposed Equivalency Sites

