

Planning Department

Old Town Midway- Pacific Highway Community Plan Update Draft Recreation Elements

Park and Recreation Board
July 21, 2016

Agenda Item 203 - Information

Goals of the Recreation Element Update Old Town

Current Population: 845

Existing Parks: 3.43 acres

Required Parks: 2.37

Required Parks: 4.48 acres



Public Outreach

Old Town Summary:

2010-2012: Public Workshops; CPU Advisory Committees; Charrette; Park & Recreation Opportunities Analysis; Presentation to Presidio Park Council.

2015-2016: Planning Commission Workshop; Discussion Draft CPU and review with CPU Advisory Committee.

2016: Equivalencies Presentations – Old Town CPU Advisory Committee.

2016-2017: Revised Draft CPU; Draft PEIR; CPG recommendation; Park and Recreation Board recommendations CPU Adoption.





Population-based Parks:

Existing

- Presidio Community Park
- El Campo Santo Pocket Park



Proposed

- Presidio Park Trails



Recreation Centers

Existing:

- Presidio Recreation Center

Proposed:

- None- Facility meets future population needs



Aquatics Complex

Existing:

- No existing facility

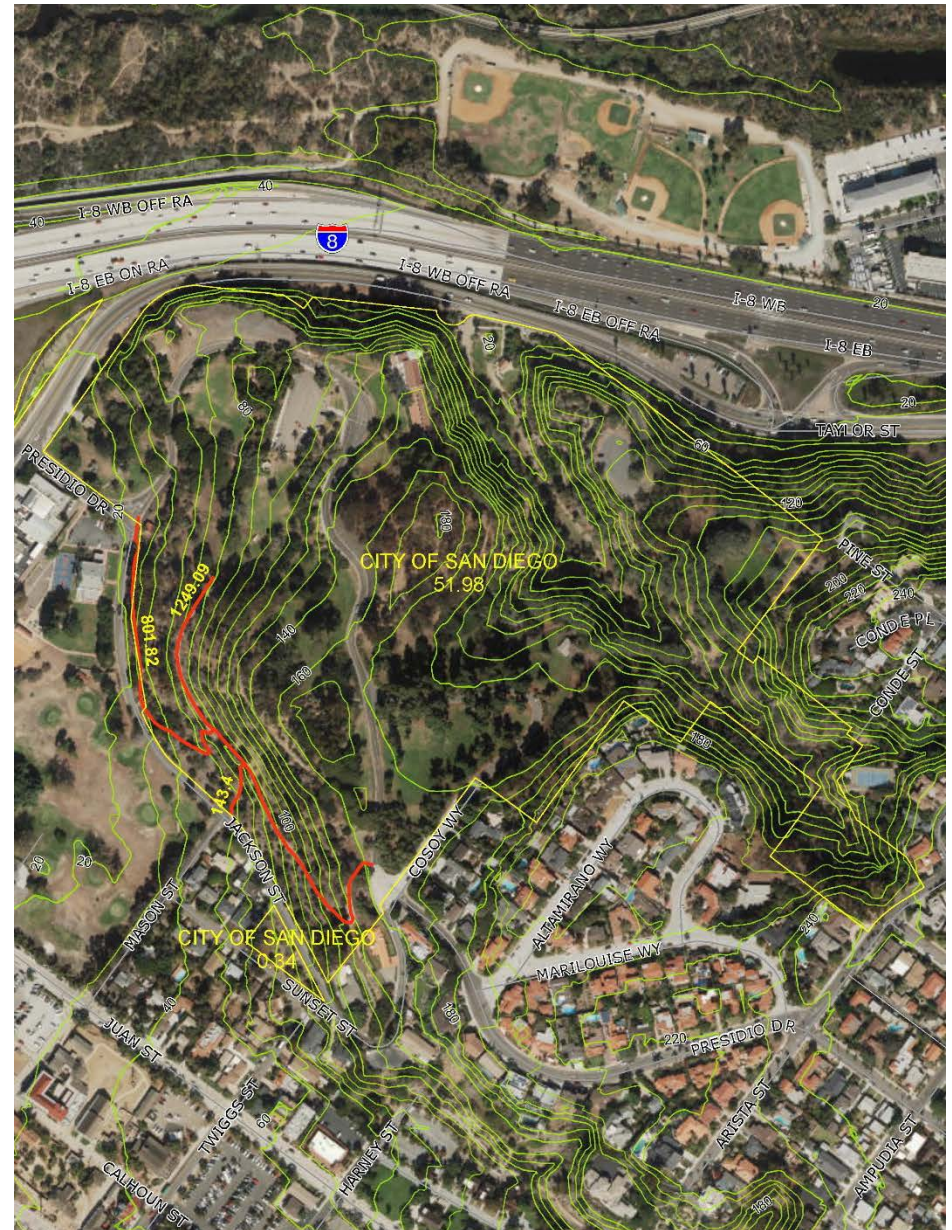
Proposed:

- Shared facility at Liberty Station swimming, water play, and clubhouse facilities



Presidio Park Equivalency

Presidio Park Trails





Summary of Park Acreages

Existing Park Acreage	3.43 ac.
Proposed Park Acreage	1.05 ac.
TOTAL: Existing + Proposed Park Acreage	4.48 ac.
Required Park Acreage	4.48 ac.



Parks, Recreation Facilities

FIGURE 8-1: POPULATION-BASED PARKS



- ◆ A. Presidio Community Park and Recreation Center
- ◆ B. El Campo Santo Pocket Park
- ★ C. Aquatic Complex at NTC Park - Liberty Station
- D. Presidio Trails

0 400 800 Feet
 Copyright 2012 SanGIS - All Rights Reserved.
 Full text of this legal notice can be found at:
http://www.sangis.org/Legal_Notice.htm

Goals of the Recreation Element Update Midway- Pacific Highway

Current Population: 4,495

Existing Parks: 0 acres

Projected Population: 12,650

Required Parks: 35 acres



Public Outreach

2010-2014: Public Workshops; CPU Advisory Committees; Charrette; Park & Recreation Opportunities Analysis; Discussion Draft CPU; Planning Commission Workshop.

2015-2016: Planning Commission Workshop #2; Discussion Draft CPU and review with CPU Advisory Committee.

2016: Park and Recreation Board Presentation.

2016-2017: Revised Draft CPUs; Draft PEIR; CPG recommendation; Park and Recreation Board recommendation; CPU Adoption.



Population-based Parks:

Existing

None



Proposed

Sports Arena Green

Dutch Flats Square

Ryan Field Square

Sports Arena Plaza

Kurtz Street Pocket Park



Recreation Centers

Existing:

- None

Proposed:

- Shared facility at Liberty Station



Aquatics Complex

Existing:

- No existing facility

Proposed:

- Shared facility at Liberty Station
swimming, water play, and
clubhouse facilities



Park Equivalencies

❑ Non-Traditional Parks- Linear Parks

- ❑ Dutch Flats Urban Village

- ❑ Sports Arena Community Village

❑ Joint- Use Parks

- ❑ Dewey Elementary School

- ❑ Gateway Village Pocket Park

- ❑ I-8 Right-of-Way Mini Park

❑ Portions of a Resource Based Park

- ❑ San Diego River Pathway within Mission Bay Park





Summary of Park Acreages

Existing Park Acreage

0 ac.

Proposed Park Acreage

22.35 ac.

TOTAL: Existing + Proposed Park Acreage

22.35 ac.

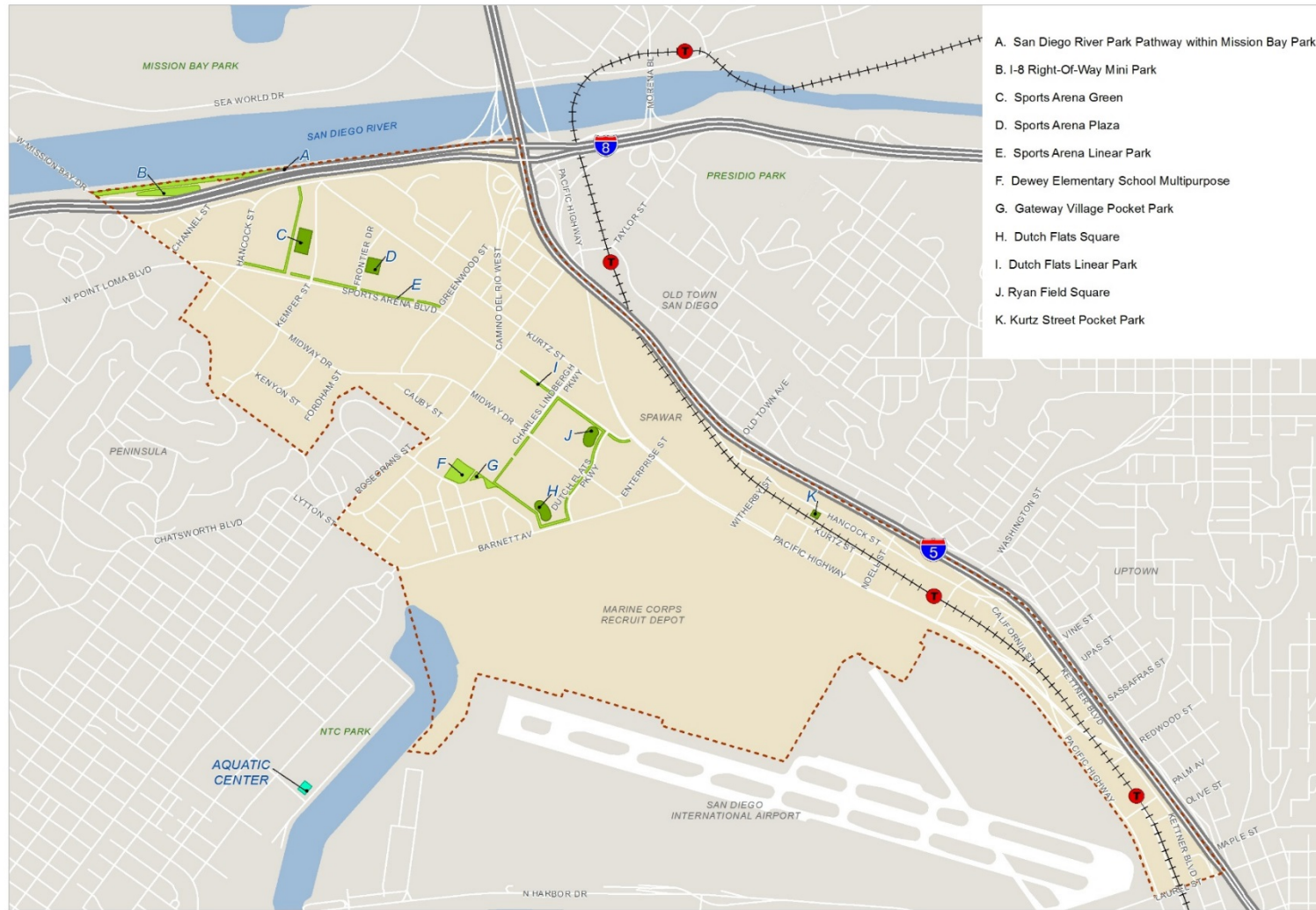
Required Park Acreage

35.42 ac.



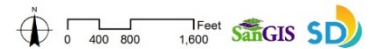
Planning Department

Parks, Recreation Facilities



- A. San Diego River Park Pathway within Mission Bay Park
- B. I-8 Right-Of-Way Mini Park
- C. Sports Arena Green
- D. Sports Arena Plaza
- E. Sports Arena Linear Park
- F. Dewey Elementary School Multipurpose
- G. Gateway Village Pocket Park
- H. Dutch Flats Square
- I. Dutch Flats Linear Park
- J. Ryan Field Square
- K. Kurtz Street Pocket Park

- Park Equivalencies
- Population-Based Parks
- Aquatic Center
- Trolley Stop
- ++ Light Rail



Copyright 2012 SanGIS - All Rights Reserved. Full text of this legal notice can be found at http://www.sangis.org/Legal_Notice.htm

Planning Department

Old Town Midway- Pacific Highway Community Plan Update Draft Recreation Element

Park and Recreation Board
July 21, 2016

Agenda Item 203 - Information