

Planning Department

Play All Day Joint Use Parks Program

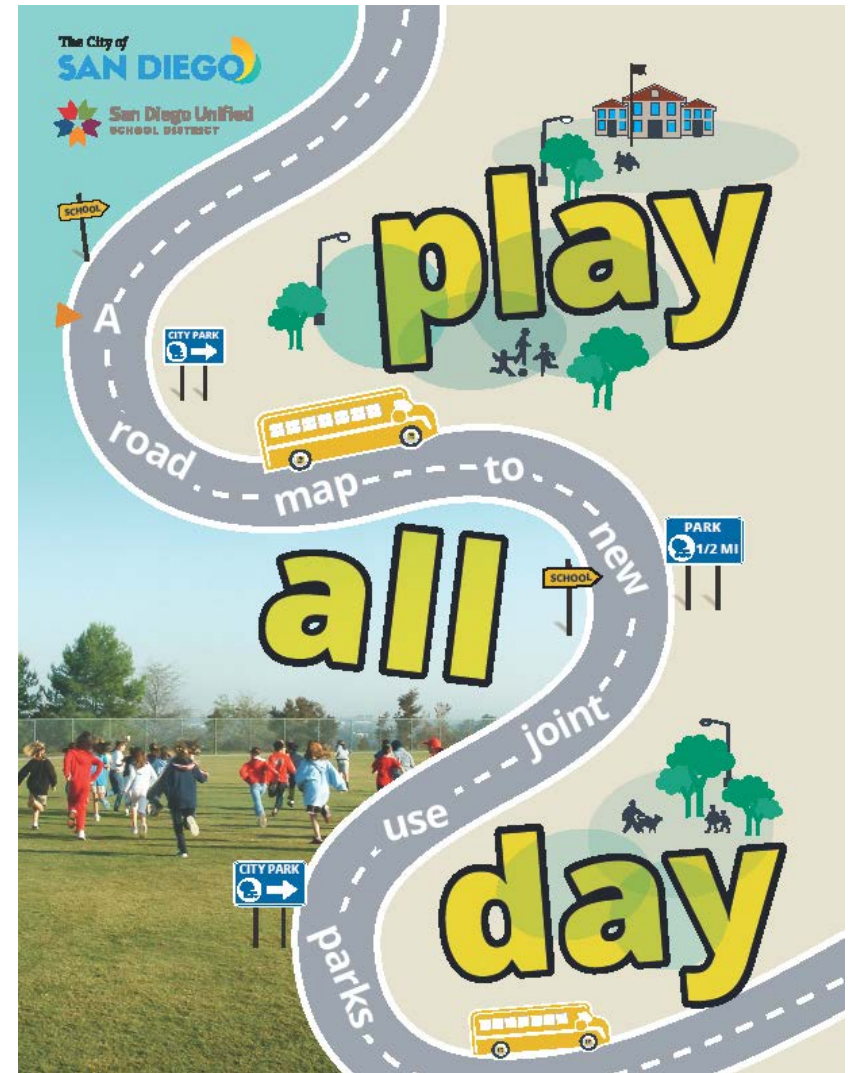
Park and Recreation Board
July 21, 2016

Informational Item

Play All Day

Introduction

- New initiative put forth by Mayor Kevin Faulconer and Superintendent Cindy Marten in 2016
- Partnership with San Diego Unified
- Expansion of the existing joint-use program
- Over 30 new joint use parks in the next 5-10 years



Joint-use

What is joint-use?

- School property is used for public use when school is not in session
- Typically includes a turf field, walking track and drinking fountain
- Most also include hardcourts, play equipment and off-street parking
- Open 30 minutes after school ends
- Closes 30 minutes before school starts
- A Joint Use Agreement is prepared for each site which identifies the District's and City's responsibilities



Purpose

Joint-use with schools fills an essential gap

- Limited amount of available land for new parks
- 23% of San Diego residents currently live further than a 10-minute walk to a park
- When people have access to parks, they exercise more.
- Opening up school yards maximizes public benefit of public lands

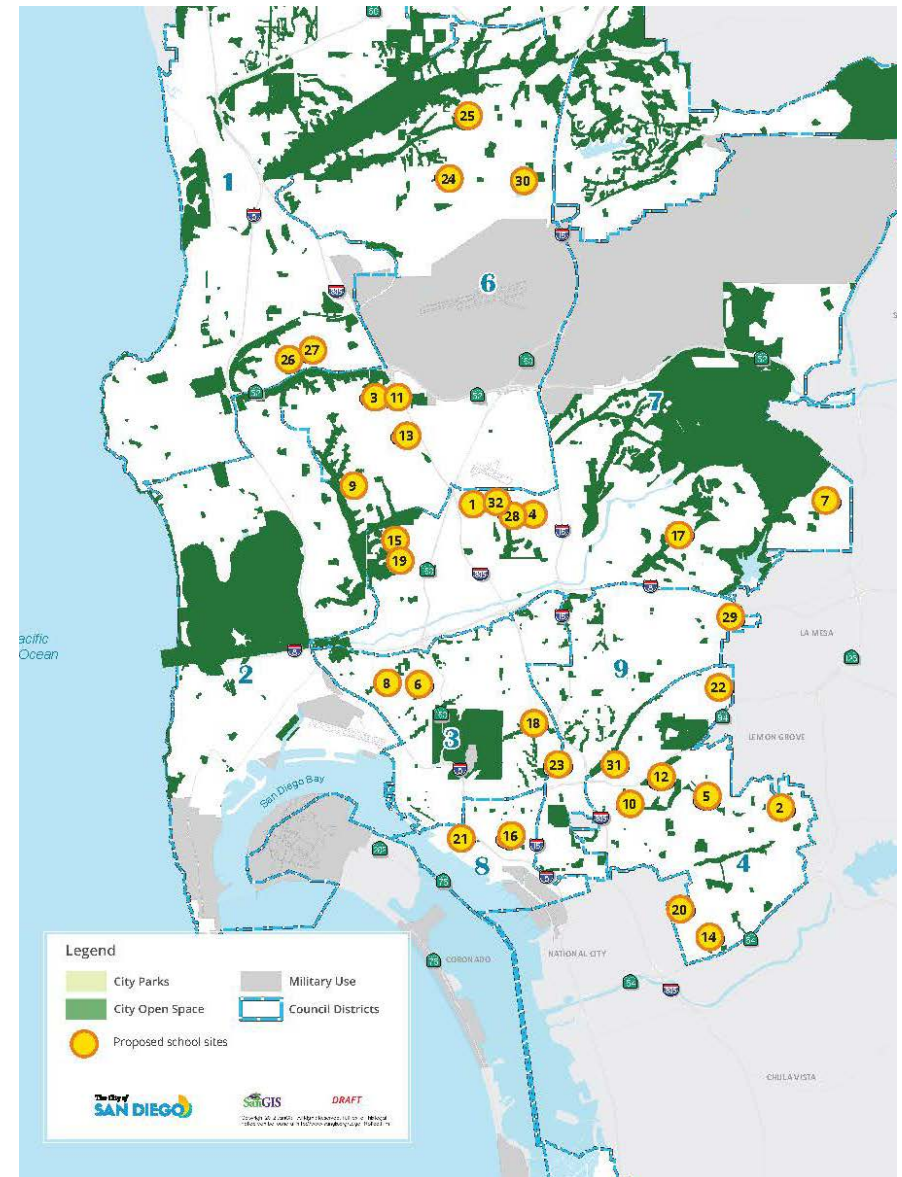


Proposed Sites

Site selection factors

- Identified in Community Plans or Facilities Finance Plans
- Located in park-deficient communities
- Adjacent to an existing park (expand use)
- Areas without parks in close proximity
- Access to hardcourts and off-street parking
- Visibility from public streets
- Pre-identified for School District funding
- On the School District's schedule for implementation

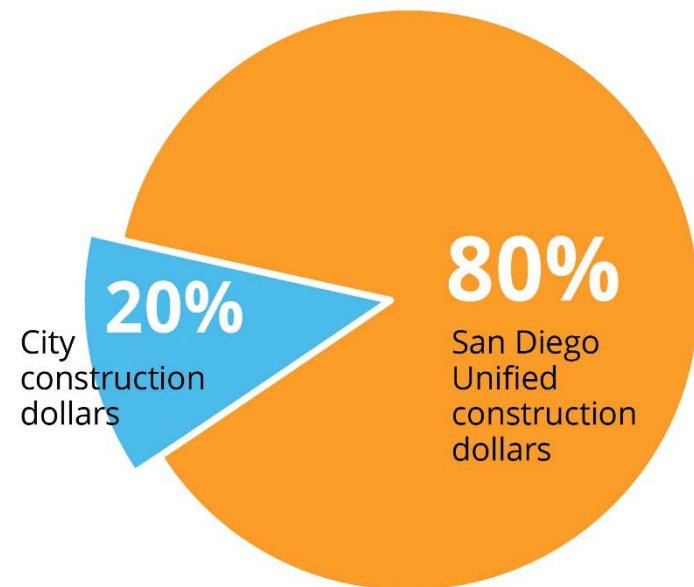
(not in order of priority)



CIP Funding and Operations and Maintenance Costs

- School District will contribute the land and existing amenities
- Prop Z bond monies to design and construct 80% of the fields
- Park and Recreation will maintain and operate all new joint use facilities

**FUNDING SOURCES FOR
IDENTIFIED PLAY ALL DAY PARKS**



Common Concerns

Issued a FAQ publication

- Posted on Park and Recreation website
- Addresses common concerns including:
 - Security – locking gates at night
 - Lighting and Noise impacts to adjacent neighbors
 - Trees in joint use areas
 - Use of natural turf

PLAY ALL DAY PARKS PROGRAM FREQUENTLY ASKED QUESTIONS AND CONCERNS

5/24/2016

Introduction:

Play All Day is an exciting commitment to build 30 new joint-use parks. This is an ambitious goal made possible by strong collaboration between the City of San Diego and the San Diego Unified School District to expand recreational opportunities in our city. The initiative strengthens the long-standing partnership between the City and the School District to maximize the shared use of public facilities and resources for educational and community use. The new park facilities will be opened on existing school sites and, for the most part, will be constructed with Proposition Z bond funding. The City will commit to operate and maintain the new park facilities.

How were the joint-use sites selected?

The determination to jointly use the selected school sites were made in partnership with the School District. A number of factors were evaluated based on the specific merits of each site. The following factors were taken into account in the selection of the Play All Day park sites:

- Identified in the Community Plan or Facilities Finance Plan as a future joint-use facility
- Located in park-deficient communities
- Adjacent to an existing park
- Located in an area where residents do not have a park in close proximity to their homes
- Access to hardcourts and off-street parking
- Visibility from public streets
- Pre-identified for School District funding
- On the School District's schedule for implementation

NOTE: Factors above are not listed in order of priority

Conclusion

Benefits

- Provide a place for physical activity
- Increase the value of neighborhood residential property
- Provide environmental benefits
- Produce opportunities for social and community interactions

