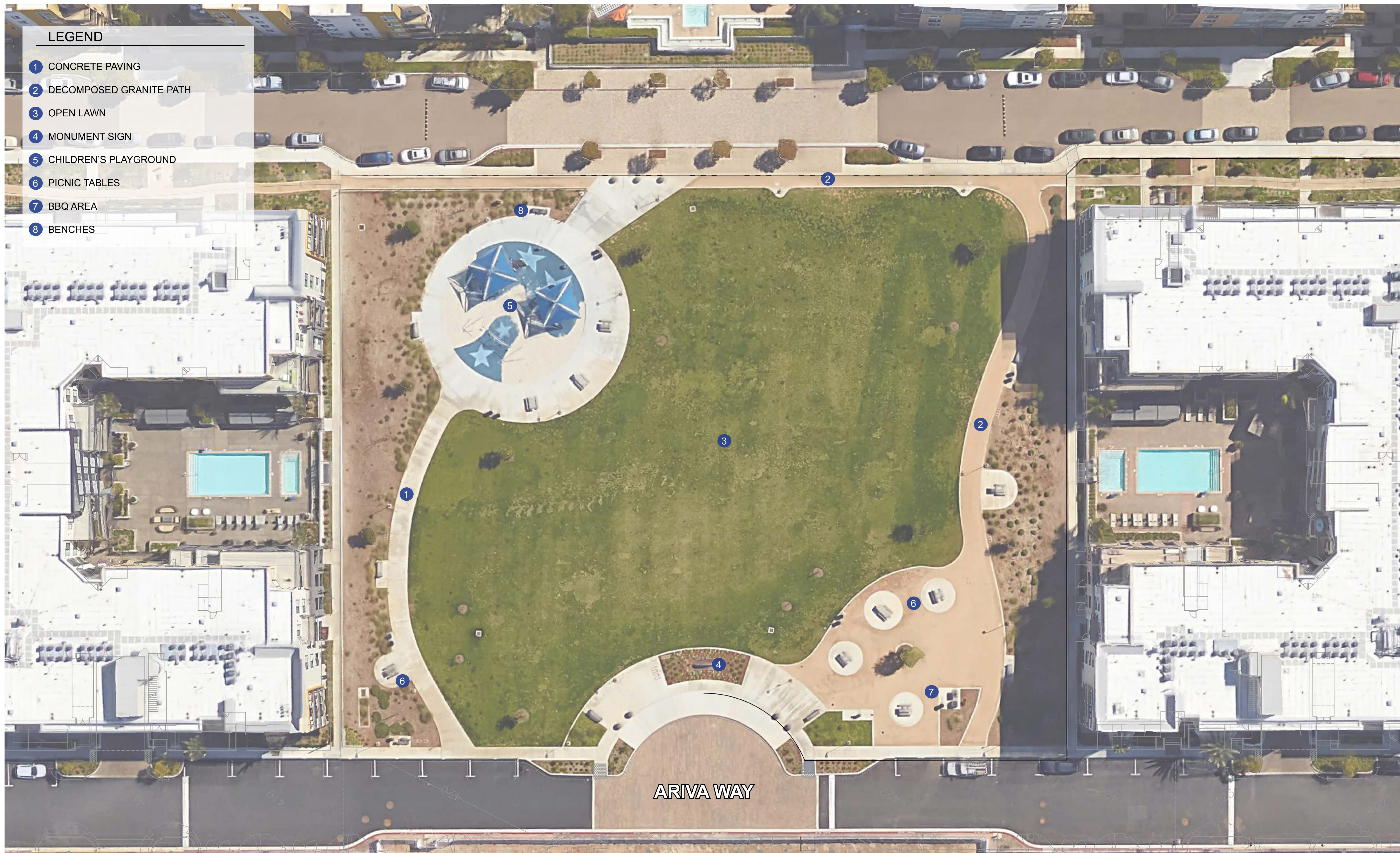




CONTEXT SITE PLAN

CENTRUM PARK

2016.10.20
SHEET NO: 1 OF 7



EXISTING CONDITIONS

CENTRUM PARK

2016.10.20
SHEET NO: 2 OF 7



SCHMIDT DESIGN GROUP, INC.
WWW.SCHMIDTDESIGN.COM
BALANCING ARTISTIC EXPRESSION IN DESIGN WITH ENVIRONMENTAL SENSITIVITY

SUNROAD
ENTERPRISES

The City of
SAN DIEGO

SCALE: 1" = 20'-0"
0 10 20 30





GENERAL DEVELOPMENT PLAN AMENDMENT

CENTRUM PARK

2016.10.20
SHEET NO: 3 OF 7

PARK CHARACTER



Shaded walkways

PARK CHARACTER



Garden areas

PARK CHARACTER



Game area

PARK CHARACTER



Park monument signage (Life-size letters)

SHADE STRUCTURE



Prefabricated shade structure

DOG PARK



D.G. (infield mix) surfacing with trees and benches

BOCCE BALL COURT



Oyster shell bocce ball courts

PING PONG TABLE



Concrete ping pong table

COMMUNITY TABLE



Large community table

EXISTING PLAYGROUND



Existing playground with shade sails

DRINKING FOUNTAIN



Drinking fountain with pet station

BBQ & HOT COAL CONTAINER



Double grill with built-in hot coal container

PICNIC TABLE



Concrete picnic table

BENCH



Steel bench

LIGHTING



MR1 LED luminaire

CHARACTER IMAGE BOARD CENTRUM PARK

2016.10.20
SHEET NO: 4 OF 7

TREES



Date Palm
Phoenix dactylifera



Chinese Flame Tree
Koelreuteria bipinnata



Camphor Tree
Cinnamomum camphora



Pink Trumpet Tree
Tabebuia impetiginosa

ENHANCED PLANTING



Fox Tail Agave
Agave attenuata



Rock Rose
Cistus x purpureus



Dwarf Bottle Brush
Callistemon viminalis 'Little John'



Blue Chalksticks
Senecio serpens



Coed Hebe
Hebe 'Coed'



Jack Spratt New Zealand Flax
Phormium tenax 'Jack Spratt'



Spanish Lavender
Lavandula stoechas



Blue Marguerite Daisy
Felicia amelloides

BASIN PLANTING



California Field Sedge
Carex praegracilis



Seaside Daisy
Erigeron glaucus



California Poppy
Eschscholzia californica



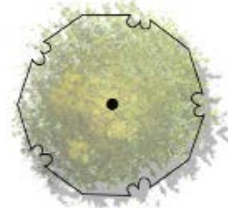
California Gray Rush
Juncus patens



PALM TREES SUCH AS:

Botanical Name
Phoenix dactylifera

Common Name
Date Palm



SPECIMEN TREES SUCH AS:

Botanical Name
Koelreuteria bipinnata
Olea europaea 'Swan Hill'

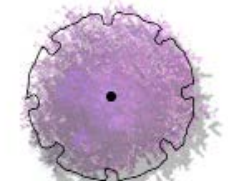
Common Name
Chinese Flame
Fruitless Olive



LANDSCAPE TREES SUCH AS:

Botanical Name
Cinnamomum camphora
Rhus lancea
Tipuana tipu
Ulmus parvifolia

Common Name
Camphor Tree
African Sumac
Tipu Tree
Chinese Elm



ACCENT TREES SUCH AS:

Botanical Name
Jacaranda mimosifolia
Tabebuia impetiginosa

Common Name
Jacaranda
Pink Trumpet Tree



ENHANCED PLANTING SUCH AS:

Botanical Name
Agave attenuata
Aloe spp.
Bougainvillea spp.
Callistemon viminalis 'Little John'

Common Name
Fox Tail Agave
Aloe species
Bougainvillea
Dwarf Bottle Brush

Cistus x purpureus
Ceanothus spp.
Dianella tasmanica
Dietes bicolor
Dyondia margaretae
Escallonia
Felicia amelloides
Hebe 'Coed'
Heliotropium arborescens
Hemerocallis spp.
Hypericum calycinum
Lantana sellowiana
Lavandula stoechas
Muhlenbergia rigens
Myoporum parvifolium
Polygala fruticosa
Phormium tenax 'Jack Spratt'
Rosmariunus officinalis
Rhaphiolepis indica
Senecio mandraliscae

Rock Rose
California Lilac
Dwarf Flax Lily
Fortnight Lily
Silver Carpet
Escallonia species
Blue Marguerite Daisy
Coed Hebe
Common Heliotrope
Evergreen Daylily
Creeping St. John's Wort
Purple Trailing Lantana
Spanish Lavender
Deer Grass
Creeping Myoporum
Sweet Pea Bush
Jack Spratt New Zealand Flax
Upright Rosemary
Indian Hawthorn
Blue Chalk Sticks



TREATMENT BASIN PLANTING SUCH AS:

Botanical Name
Carex spp.
Erigeron glaucus
Eschscholzia californica
Juncus patens

Common Name
Sedge
Seaside Daisy
California Poppy
California Gray Rush



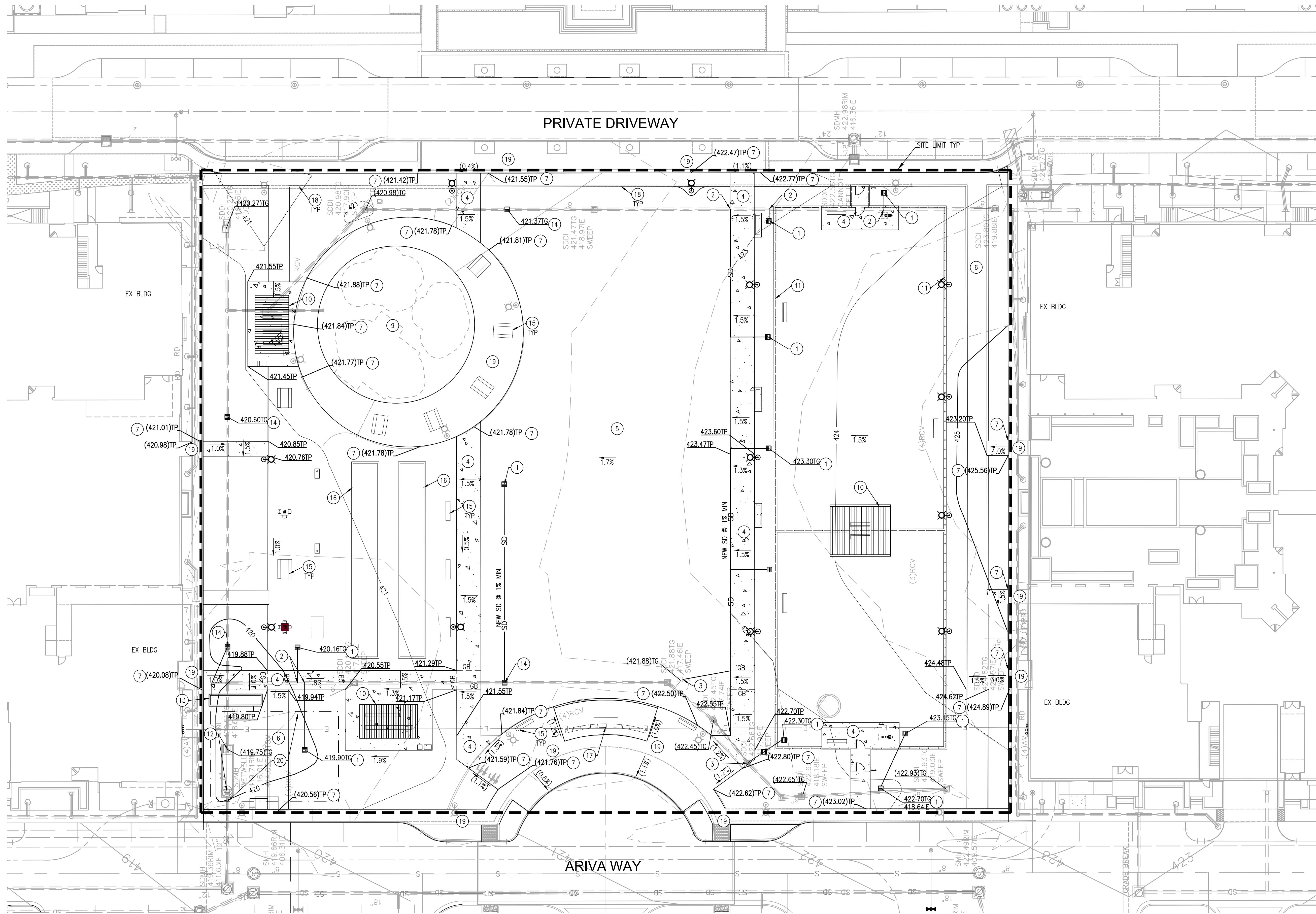
TURF

Common Name
GN-1 hybrid Bermuda
Overseed with 'Turf Star' Rye @
5lbs./1000 sf

PLANT IMAGE BOARD

CENTRUM PARK

2016.10.20
SHEET NO: 5 OF 7



STORM WATER POLLUTION PREVENTION NOTE

THIS PROJECT PROPOSES CONSTRUCTION AND DEMOLITION ACTIVITY RESULTING IN LAND DISTURBANCE GREATER THAN 1 ACRE. A STORM WATER POLLUTION PREVENTION PLAN (SWPPP) SHALL BE PREPARED TO COMPLY WITH ALL PROVISIONS OF THE GENERAL PERMIT FOR STORM WATER DISTURBANCE ACTIVITIES, AS DEFINED BY THE STATE WATER RESOURCES CONTROL BOARD ORDER NO. 2009-0009-DWQ.

CONSTRUCTION NOTES

1. THE LOCATIONS OF UNDERGROUND UTILITIES AS SHOWN HEREON ARE BASED ON ABOVE GROUND STRUCTURES AND RECORD DRAWINGS PROVIDED TO THE SURVEYOR. LOCATIONS OF UNDERGROUND UTILITIES/STRUCTURES MAY VARY FROM LOCATIONS SHOWN HEREON. ADDITIONAL BURIED UTILITIES/STRUCTURES MAY BE ENCOUNTERED. NO EXCAVATIONS WERE MADE DURING THE PROGRESS OF THIS SURVEY TO LOCATE BURIED UTILITIES/STRUCTURES.
2. EXISTING DRY UTILITIES & IRRIGATION REMOVALS, RELOCATIONS, AND ABANDONMENT ARE NOT SHOWN ON THIS PLAN.
3. NEW DRY UTILITIES & IRRIGATION LOCATIONS ARE NOT SHOWN ON THIS PLAN.

LEGEND

CONCRETE PAVEMENT	SD
STORM DRAIN	SD
CATCH BASIN	SD
MOW CURB	SD
FENCE	SD
CONTOUR	SD
EX CONTOUR	SD
SITE LIMITS	SD

GRADING KEY NOTES:

- 1 CATCH BASIN
- 2 CONNECT NEW PVC STORM DRAIN TO EX STORM DRAIN
- 3 CONNECT NEW PVC STORM DRAIN TO EX CATCH BASIN
- 4 NEW CONCRETE WALKWAY PER SDG-155, SDG-156, & G-10
- 5 PROTECT EX TURF FIELD, SEE LANDSCAPE DWGS FOR SALVAGED AREA
- 6 CONSTRUCT NEW DECOMPOSED GRANITE PATH PER LANDSCAPE DWGS
- 7 MATCH EX PAVEMENT ELEVATION
- 8 NEW DRINKING FOUNTAIN PER LANDSCAPE DWGS
- 9 PROTECT EX PLAYGROUND AREA
- 10 NEW SHADE STRUCTURE PER LANDSCAPE DWGS
- 11 NEW FENCE PER LANDSCAPE DWGS
- 12 SALVAGE, RELOCATE & REUSE EX MODULAR WETLAND BMP
- 13 RELOCATED MODULAR WETLAND BMP
- 14 INSTALL NEW CATCH BASIN AND CONNECT EX STORM DRAIN
- 15 NEW SITE FURNISHINGS PER LANDSCAPE DWGS
- 16 BOCCIE BALL COURT PER LANDSCAPE DWGS
- 17 NEW MONUMENT SIGN PER LANDSCAPE DWGS
- 18 NEW MOW CURB
- 19 PROTECT EX CONCRETE PAVEMENT
- 20 UNDERGROUND DETENTION FACILITY FOR HYDROMODIFICATION MANAGEMENT

CONCEPTUAL GRADING PLAN

CENTRUM PARK

2016.10.20
SHEET NO: 6 OF 7

LEGEND

- EXISTING TO REMAIN 12FT POLE AND BASE.
DEMO EXISTING METAL HALIDE HEAD.
NEW LED FULL CUTOFF HEAD TO REPLACE
EXISTING, STYLE AND DISTRIBUTION PER
SPECIFICATIONS.
- OLD WATTAGE (128W), NEW WATTAGE (75W-100W)
- NEW 12FT POLE, BASE AND LED FULL CUTOFF
HEAD AREA LIGHT
- NEW SURFACE LINEAR LED DOWNLIGHT
- NEW INGRADE LED LANDSCAPE UPLIGHT

T4 T = TYPE
= DISTRIBUTION TYPE (3, 4, 5)

AREAS WITH 0.5FC, OR GREATER,
LIGHTING CONTRIBUTION FROM
DESIGNED LIGHTING LOCATIONS
(MEASURED HORIZONTALLY AT GROUND)

AREAS WITH LESS THAN 0.1FC LIGHTING
CONTRIBUTION FROM DESIGNED LIGHTING
LOCATIONS (MEASURED HORIZONTALLY
AT GROUND).

DOES NOT INCLUDE EXTERNAL LIGHTING CONTRIBUTIONS OR IMPACTS
FROM LANDSCAPE FEATURES.

A LED AREA LIGHTING
LITHONIA MR1
TO MATCH EXISTING

A1 LED PEDESTRIAN LIGHTING
LITHONIA MRP

B LED LANDSCAPE/SIGNAGE UPLIGHT
BK ADJUSTABLE WELLSTAR AW

C LED TRELLIS DOWNLIGHT
PINNACLE EX3 WET

C1 LED TRELLIS DOWNLIGHT
(ALTERNATE TO "C")
BK ARTISTAR AR

BASIS OF DESIGN

ARIVA PARK IS PLANNED FOR DAWN TO DUSK USE. NIGHTTIME
LIGHTING FOR ARIVA PARK IS DESIGNED FOR SECURITY
LIGHTING, PER THE PARK & RECREATION GUIDELINES.
LIGHTING IS COMPOSED OF A FAMILY OF FIXTURES
REPLICATING THE EXISTING AESTHETICS UTILIZING MODERN
TECHNOLOGY AND LED SOURCES. LUMINAIRES ARE INTENDED
TO COMPLY WITH LOCAL, CALIFORNIA TITLE 24-2013 AND
CALGREEN ENERGY CODE REQUIREMENTS FOR CONTROLS
AND SPILL LIGHT REDUCTIONS. LUMINAIRES ARE LOCATED
FOR SECURITY ALONG PATHWAYS AND HARDSCAPE AREAS,
WHILE BEING PULLED AWAY FROM THE PROPERTY
BOUNDARIES AND ADJACENT RESIDENTIAL BUILDINGS.
LUMINAIRES ARE LOCATED TO PROVIDE A MINIMUM OF 0.50FC
ALONG PRIMARY WALKWAYS. IN-GRADE UP LIGHTS ARE
PROPOSED FOR ACCENT LIGHTING ON FEATURE PALM TREES
AND LIFE-SIZE PARK SIGNAGE.



CONCEPTUAL LIGHTING PLAN

CENTRUM PARK

2016.10.20
SHEET NO: 7 OF 7