



REPORT

THE CITY OF SAN DIEGO TO THE PARK AND RECREATION BOARD

DATE ISSUED: April 12, 2017 REPORT NO. 201

ATTENTION: Park and Recreation Board
Agenda of April 20, 2017

SUBJECT: Update to the General Development Plan for CPMA and Gage Joint
Use Facilities

SUMMARY

THIS IS AN INFORMATIONAL ITEM ONLY. NO ACTION IS REQUIRED ON THE PART OF THE BOARD.

BACKGROUND

On November 19, 2015, Report No. 103, the Park and Recreation Board took action to recommend approval of the General Development Plan for CPMA Middle School Joint Use Facility in the Clairemont community and Gage Elementary Joint Use Facility in the Serra Mesa community. At that time the San Unified School District, as the Lead Agency under the California Environmental Quality Act (CEQA), prepared an Initial Study for each site and determined that there were no environmental impacts.

DISCUSSION

CPMA Joint Use Facility provides approximately 1.92 acres of multi-use natural turf, a walking track, existing hard courts, existing parking area and a drinking fountain.

Gage Joint Use Facility provides approximately 1.92 acres of multi-use natural turf, walking track, accessible ramp, existing hard courts, three play structures, parking area and drinking fountain.

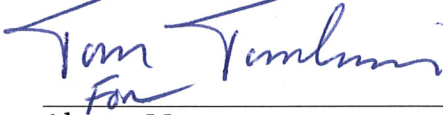
The Initial Study prepared by the School District did not identify any environmental issues that needed to be addressed in the design of the projects and therefore a Notice of Exemption was prepared and will be taken to the School District Board for approval on April 25, 2017. Both General Development Plans for CPMA and Gage remain as presented to the Park Board in November 2015. Construction for the two projects is anticipated to begin in summer 2017.

Page 2

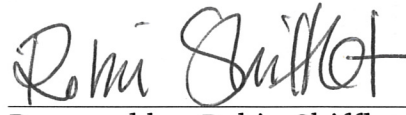
Update to the General Development Plan for CPMA and Gage Joint Use Facility

April 12, 2017

Respectfully submitted,

A handwritten signature in blue ink that reads "Tom Tomblin" with "For" written below it.

Alyssa Muto
Deputy Director, Environment & Resource
Analysis Division

A handwritten signature in blue ink that reads "Robin Shifflet".

Prepared by: Robin Shifflet
DPM III

RS/rs

Attachment: Power point presentation

cc: Council District 6 & 7

Planning Department

CPMA Middle and Gage Elementary General Development Plan

Park and Recreation Board
April 20, 2017

Information Item #201



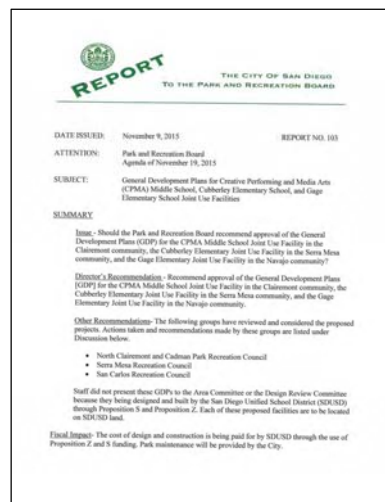
 Planning Department

Background

On November 19, 2015, Report No. 103, the Park and Recreation Board took action to recommend approval of the General Development Plans for joint use facilities at:

- Creative Performing and Media Arts (CPMA) Middle School located at 5050 Conrad Avenue in the Clairemont Community
- Gage Elementary School located at 6811 Bisby Lake Avenue in the Navajo Community

A Notice of Exemption for the projects has been prepared by San Diego Unified and will be taken to the School District Board for approval on April 25, 2017.



sandiego.gov

CPMA Middle School

General Development Plan



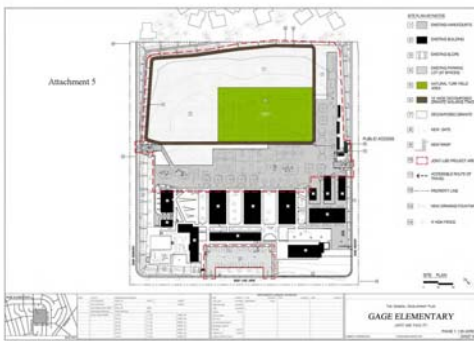
Phase 1
Design is complete. Construction anticipated to begin summer 2017



Phase 2
Design and construction to occur when funding is identified

Gage Elementary School

General Development Plan



Phase 1
Design is complete. Construction anticipated to begin summer 2017



Phase 2
Design and construction to occur when funding is identified