



# REPORT

## THE CITY OF SAN DIEGO TO THE PARK AND RECREATION BOARD

---

DATE ISSUED: October 23, 2018

REPORT NO:

ATTENTION: Park and Recreation Board  
Agenda of November 15, 2018

SUBJECT: General Development Plan Amendment for John F. Kennedy Neighborhood  
Park

### SUMMARY

Issue: Should the Park and Recreation Board recommend approval of the General Development Plan (GDP) Amendment for John F. Kennedy Neighborhood Park to include a picnic shelter?

Director's Recommendation – Recommend approval of the proposed GDP Amendment for John F. Kennedy Neighborhood Park to include a picnic shelter.

Other Recommendations – The following groups have reviewed and considered the proposed project. Actions taken and recommendations made by these groups are listed under Discussion below.

- On August 16, 2018 the Martin Luther King Recreation Council voted unanimously (3-0-0) recommending approval of the proposed GDP Amendment.

Fiscal Impact – The total project budget is approximately \$1.9 million. Funding for the proposed project is available from the Encanto Neighborhood Developer Impact Funds (DIF). There is no anticipated increase to the annual operational budget.

Water and Energy Conservation Status – The proposed John F. Kennedy Neighborhood Park Picnic Shelter complies with all water and energy conservation guidelines contained in Council Policy 200-14.

Environmental - This activity is Statutorily Exempt from CEQA, pursuant to State CEQA Guidelines, Section 15262 (Feasibility and Planning Studies).

### BACKGROUND

This project provides for the design and construction of a new picnic shelter as well as improvements to the existing tot lot, restroom and associated accessibility (ADA) path of travel improvements within the John F. Kennedy Neighborhood Park.

DISCUSSION

Public Works Department staff and the designer conducted a public workshop with the community. The meeting was focused on the conceptual design for the park improvements including the picnic shelter. During the community workshop, City staff and the consultant provided concepts of proposed amenities and the picnic shelter.

The proposed GDP Amendment before the Board is a product of consensus achieved through the meeting as well as substantial design development undertaken by staff, the community, and project designers.

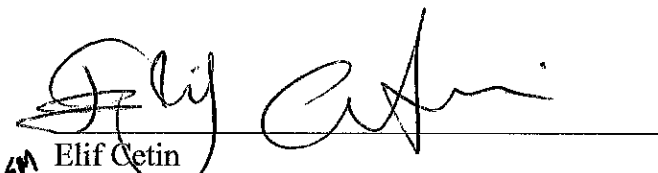
The proposed General Development Plan Amendment improvements includes construction of a new picnic shelter within the John F. Kennedy Neighborhood Park.

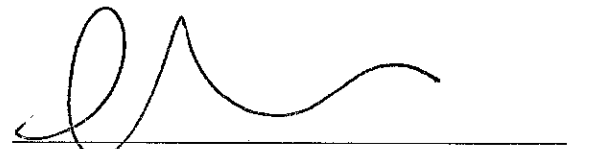
The primary issues raised during community input meetings was that the community wanted more lighting for the park. To mitigate these concerns PWD have coordinated with Environmental Services Department (ESD) on a separate lighting upgrade project they have scheduled to be completed by December 2018. Additional park lighting has been added to the scope of the project to address concerns.

ALTERNATIVES

1. Recommend approval of the General Development Plan (GDP) Amendment for John F. Kennedy Neighborhood Park.
2. Recommend approval of the General Development Plan (GDP) Amendment for John F. Kennedy Neighborhood Park with modifications.
3. Do not recommend approval of the General Development Plan (GDP) Amendment for John F. Kennedy Neighborhood Park.

Respectfully submitted,

  
SM Elif Cetin  
Deputy Director  
Public Works Department  
Architectural Engineering and Parks Division

  
Prepared by: Lydia L. Marshall  
Assistant Civil Engineer  
Public Works Department  
Architectural Engineering and Parks Division

Page 3

John F. Kennedy Neighborhood Park – General Development Plan Amendment  
October 23, 2018

Attachments:

1. John F. Kennedy Neighborhood Park General Development Plan Amendment
2. Supporting exhibits.

cc: Council District 4

Herman Parker, Director, Parks and Recreation Department

Andy Field, Assistant Director, Parks and Recreation Department

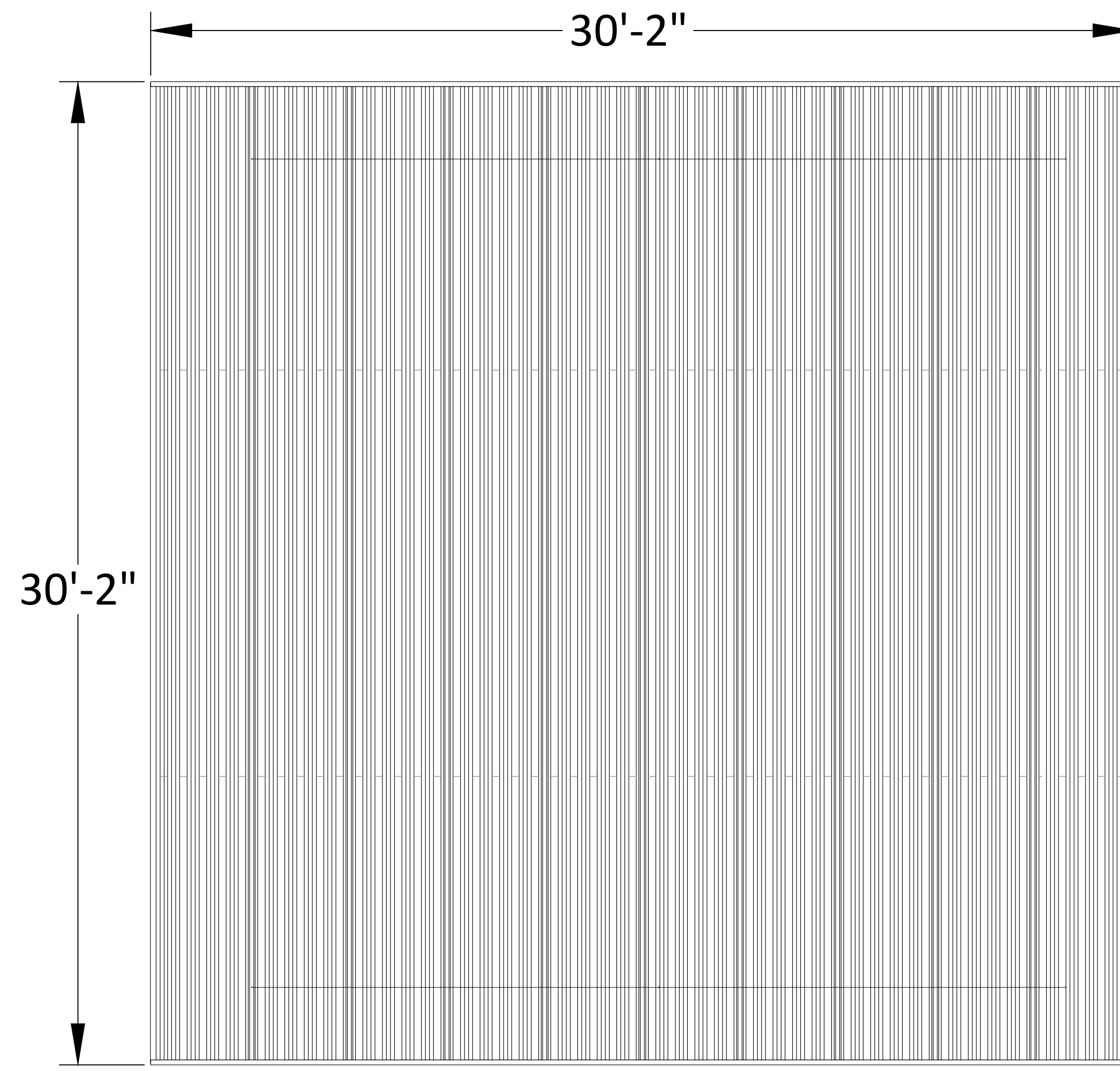
James Nagelvoort, Director, Public Works Department

Samir Mahmalji, PO II, Public Works Department



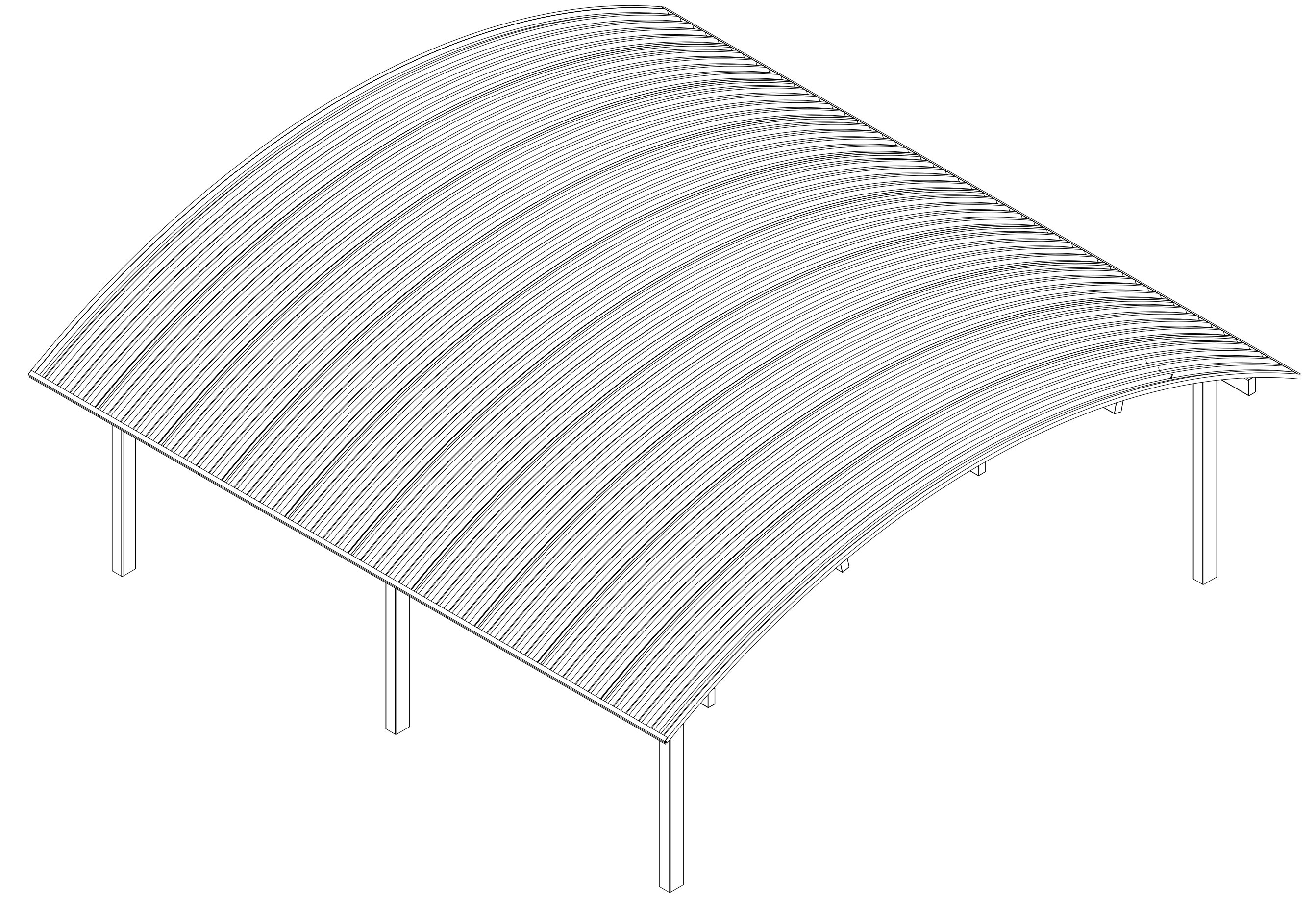


CONCEPT IMAGE



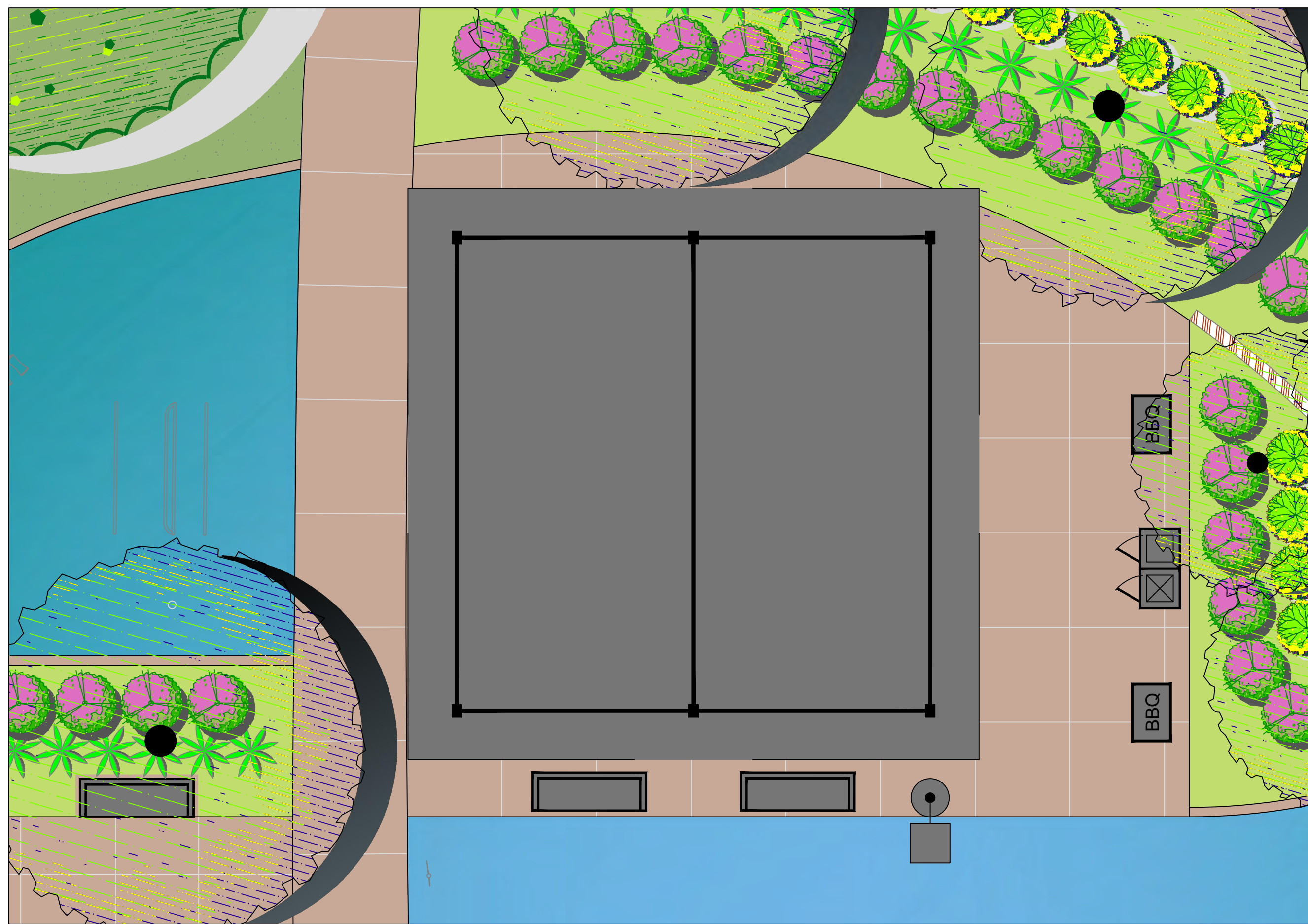
NTS

PLAN

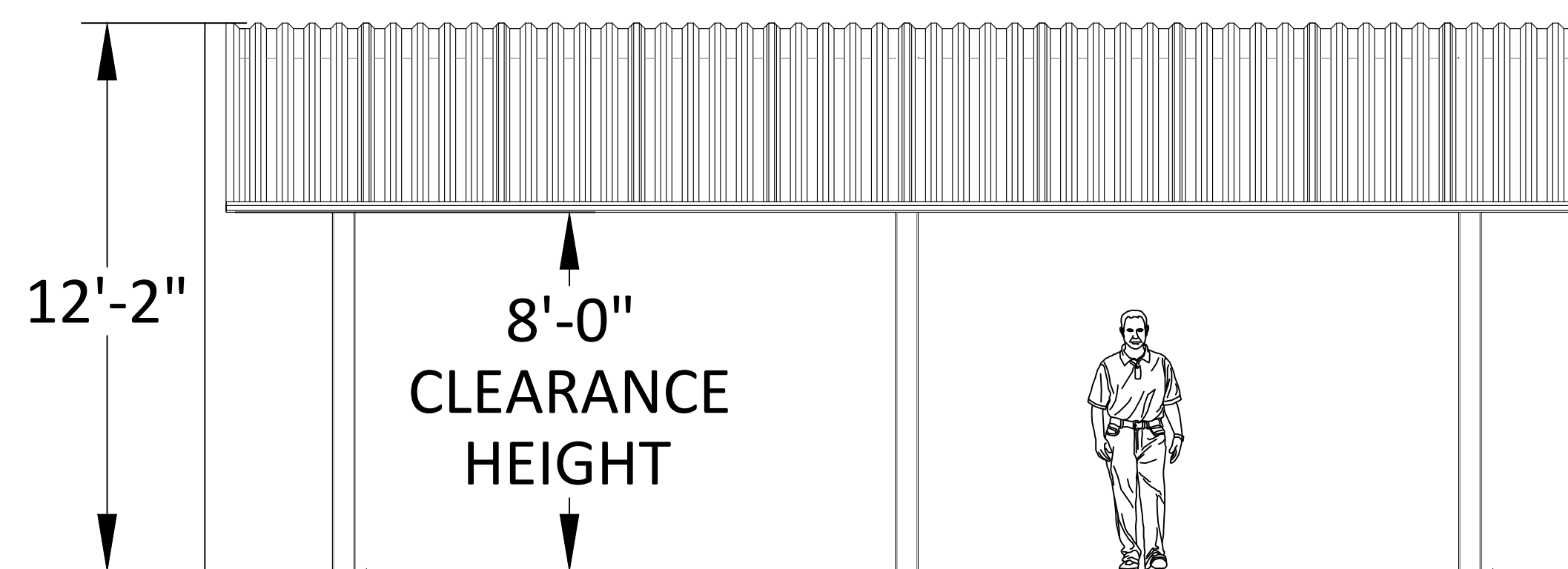
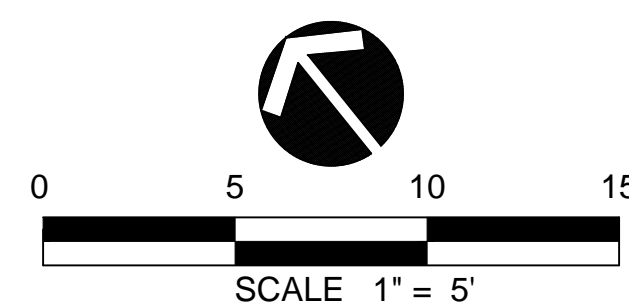


NTS

AXONOMETRIC VIEW



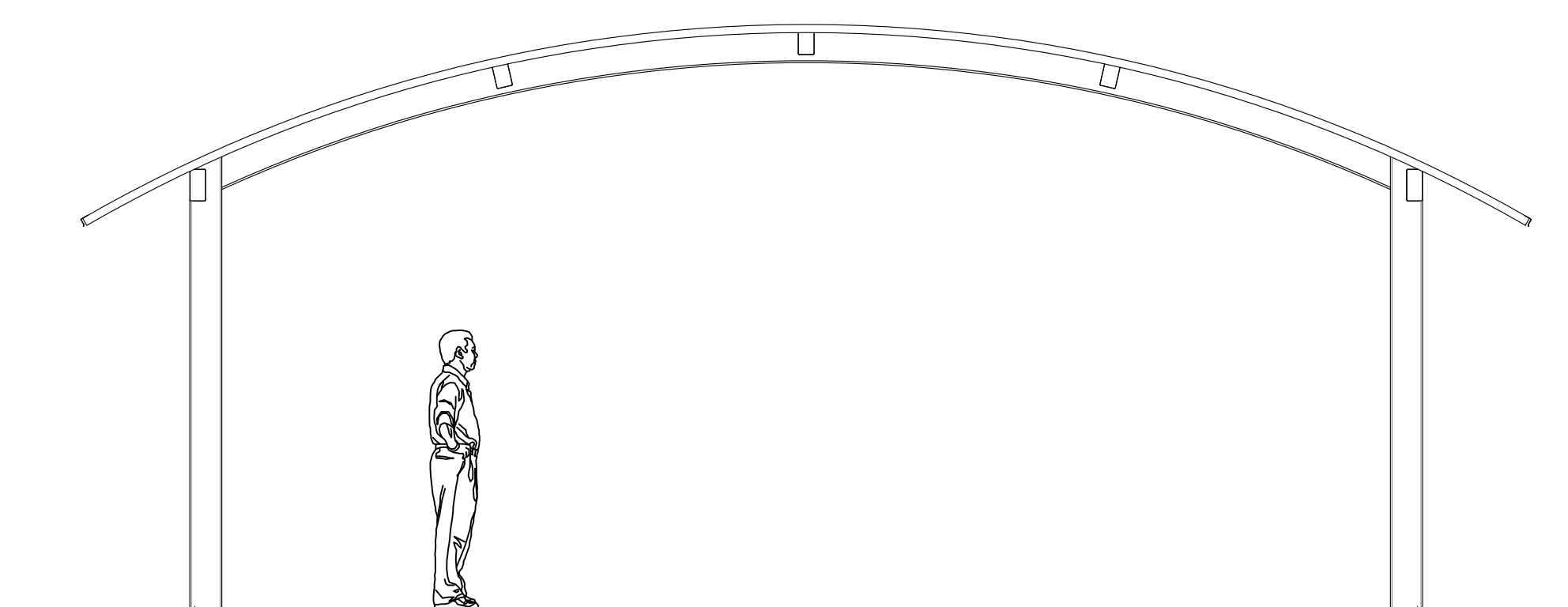
PLAN



NTS

NORTH/SOUTH ELEVATION

FINISH GRADE



NTS

WEST/EAST ELEVATION

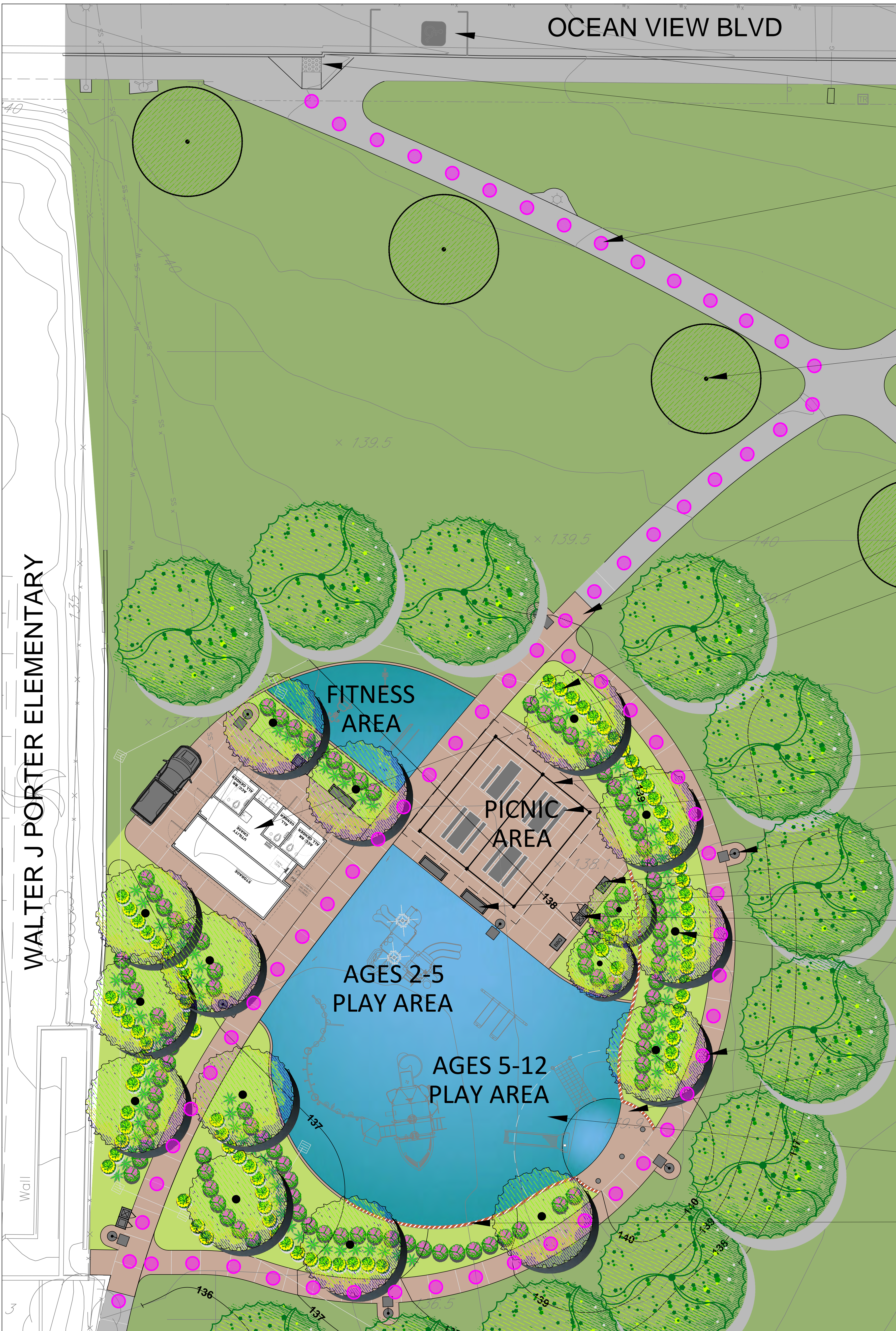
**SHADE STRUCTURE FEATURES**

- ROOF TYPE: BARRELED, STEEL, PAINTED (COLOR TO MATCH PLAY EQUIPMENT COLOR SCHEME)
- ROOF COLOR: BLUE OR GREEN
- MATERIAL: STRUCTURAL STEEL, PAINTED



225 Broadway  
Suite 1160  
San Diego  
California 92101  
619-236-0143  
619-236-0578 fax

OCTOBER 18, 2018  
**SHADE STRUCTURE**






- ADA ACCESSIBLE PARKING STALL
- ADA ACCESSIBLE RAMP
- EXISTING COLORED CONCRETE
  - SPORADIC LIFTING / CRACKING FROM TREE ROOTS
  - REPAIRS TO BE PRIMARILY FOCUSED ALONG ADA PATH OF TRAVEL




EXISTING TREE (TYP.)  - TO REMAIN

PROPOSED PAVING (TYP.)  
- COLORED CONCRETE TO MATCH EXISTING

SHRUB PLANTING 

PROPOSED RESTROOM  
- ADA ACCESSIBLE  
- ALL-GENDER FACILITIES  
- LAVATORIES  
- DRINKING FOUNTAINS  
- STORAGE AREA

SHADE STRUCTURE   
PICNIC BENCH (ADA & NON-ADA) (TYP.)   
PROPOSED LIGHTING (TYP.) 

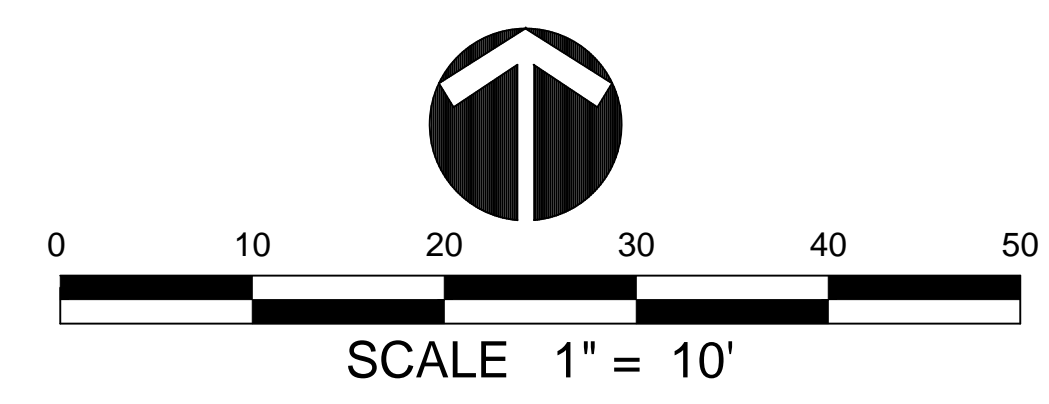
DOUBLE BBQ (TYP.)   
BENCH (TYP.)   
WASTE / RECYCLE RECEPTACLES (TYP.) 

PROPOSED SHADE TREES   
ADA ACCESSIBLE PATH OF TRAVEL 

ELEVATED PLATFORM OVERLOOKING PLAY AREA WITH FLAG POLES, TELESCOPES AND INTERACTIVE SIGNAGE

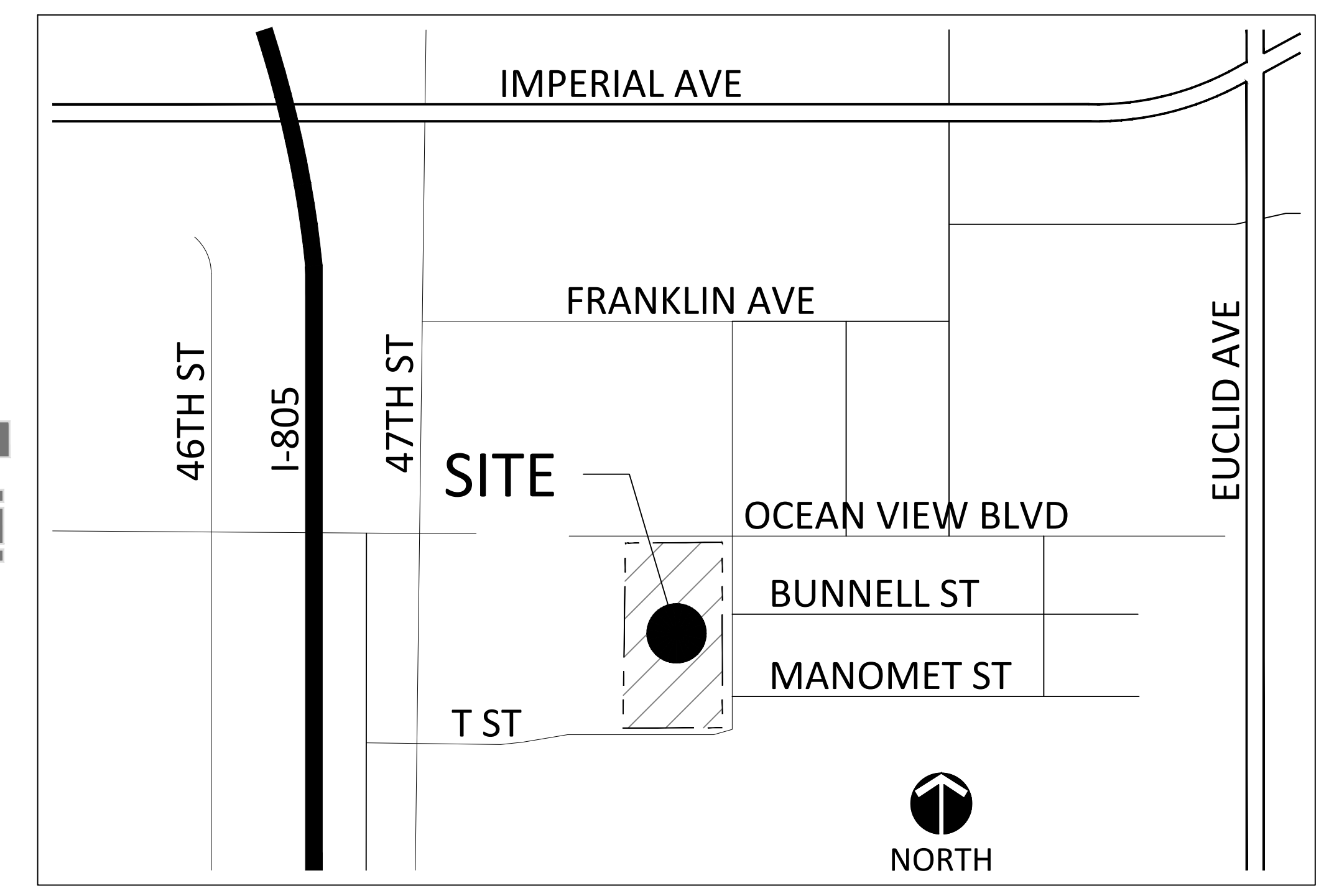
MOUND WITH ROLLER SLIDE AND CLIMBING ELEMENTS

'WAVE' WALL (TYP.)



### SITE AMENITIES:

- SHADED 2-5 YEAR-OLD AND 5-12 YEAR-OLD PLAY STRUCTURES
- RESILIENT SURFACE PLAY AREAS
- ADA ACCESSIBLE WALKWAY AROUND THE PLAY AREA PERIMETER
- LARGE SHADE TREES
- SHADE STRUCTURE WITH PICNIC TABLES, BBQ'S AND BENCHES
- ACCESSIBLE RESTROOMS
- ACCESSIBLE PEDESTRIAN RAMP & PARKING STALL
- ACCESSIBLE HI/LO DRINKING FOUNTAIN (ON BUILDING)
- COLORED CONCRETE PAVING TO MATCH EXISTING



VICINITY MAP  
NOT TO SCALE



\*Custom product manufacturing time for this project will be approximately 4 weeks from the time of L3 order acceptance.



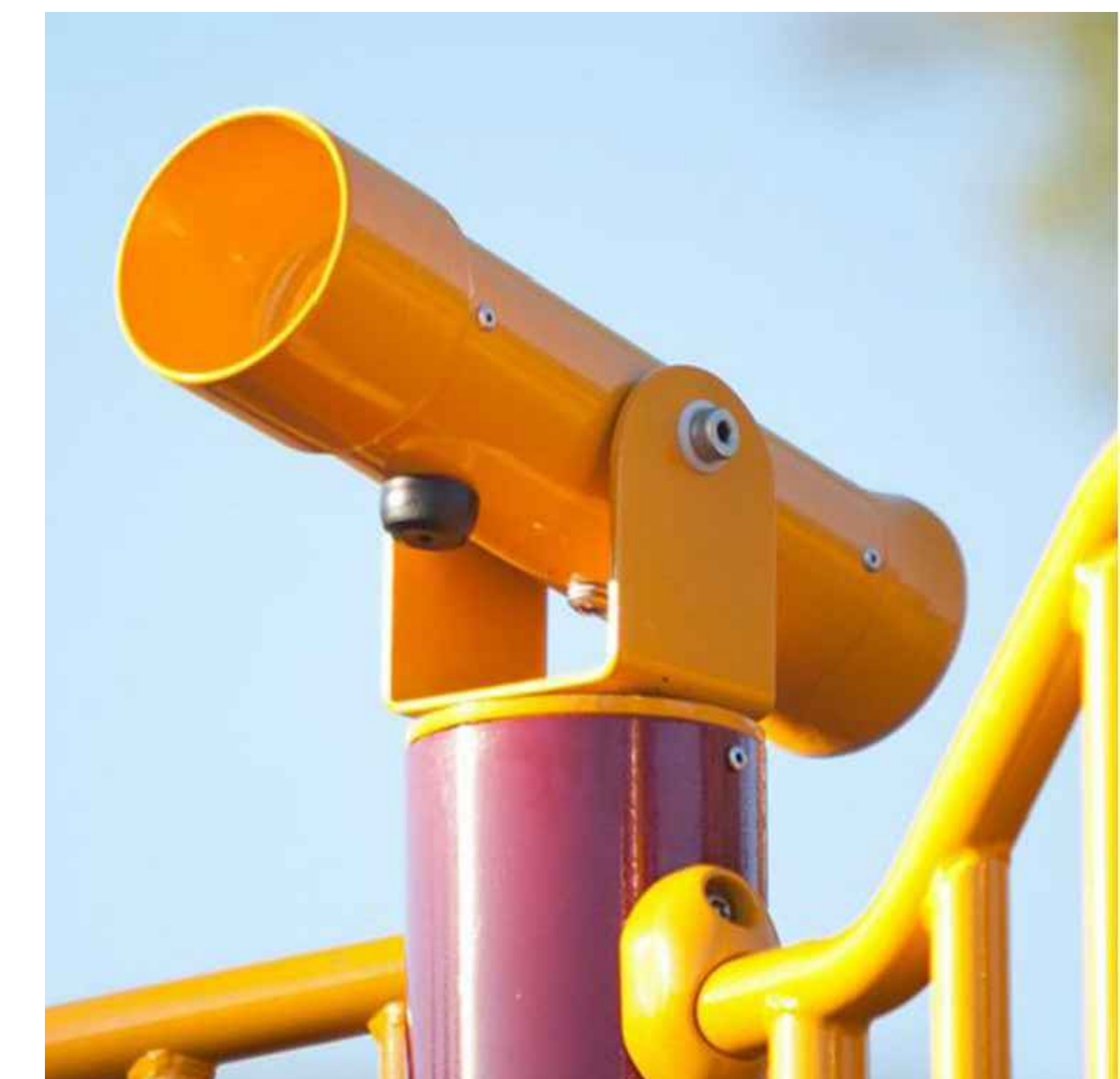
FOR A BETTER TOMORROW  
WE PLAY TODAY  
shapedbyplay.com

©2018 Landscape Structures. All Rights Reserved.



OCTOBER 18, 2018

# 'SHIPWRECK ISLAND' CONCEPT IMAGES (2-5 YEAR OLD)



\*Custom product manufacturing time for this project will be approximately 4 weeks from the time of L3 order acceptance.

©2018 Landscape Structures. All Rights Reserved.



FOR A BETTER TOMORROW  
WE PLAY TODAY  
shapedbyplay.com

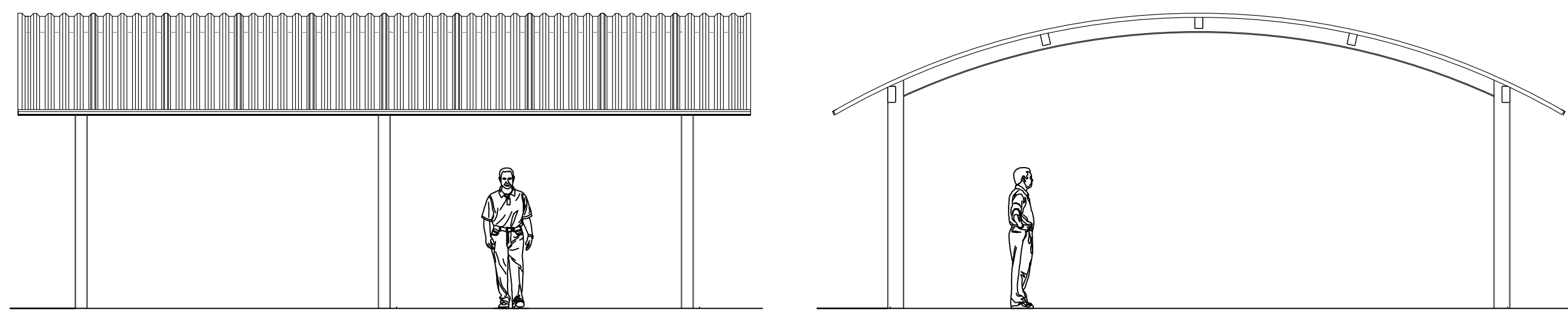
Proudly presented by:  
Gregg Rogers



OCTOBER 18, 2018

'SHIPWRECK ISLAND' CONCEPT IMAGES (5-12 YEAR OLD)





SHADE STRUCTURE



WASTE / RECYCLE RECEPTACLES



BENCHES (WITH & WITHOUT BACK)



BICYCLE RACKS

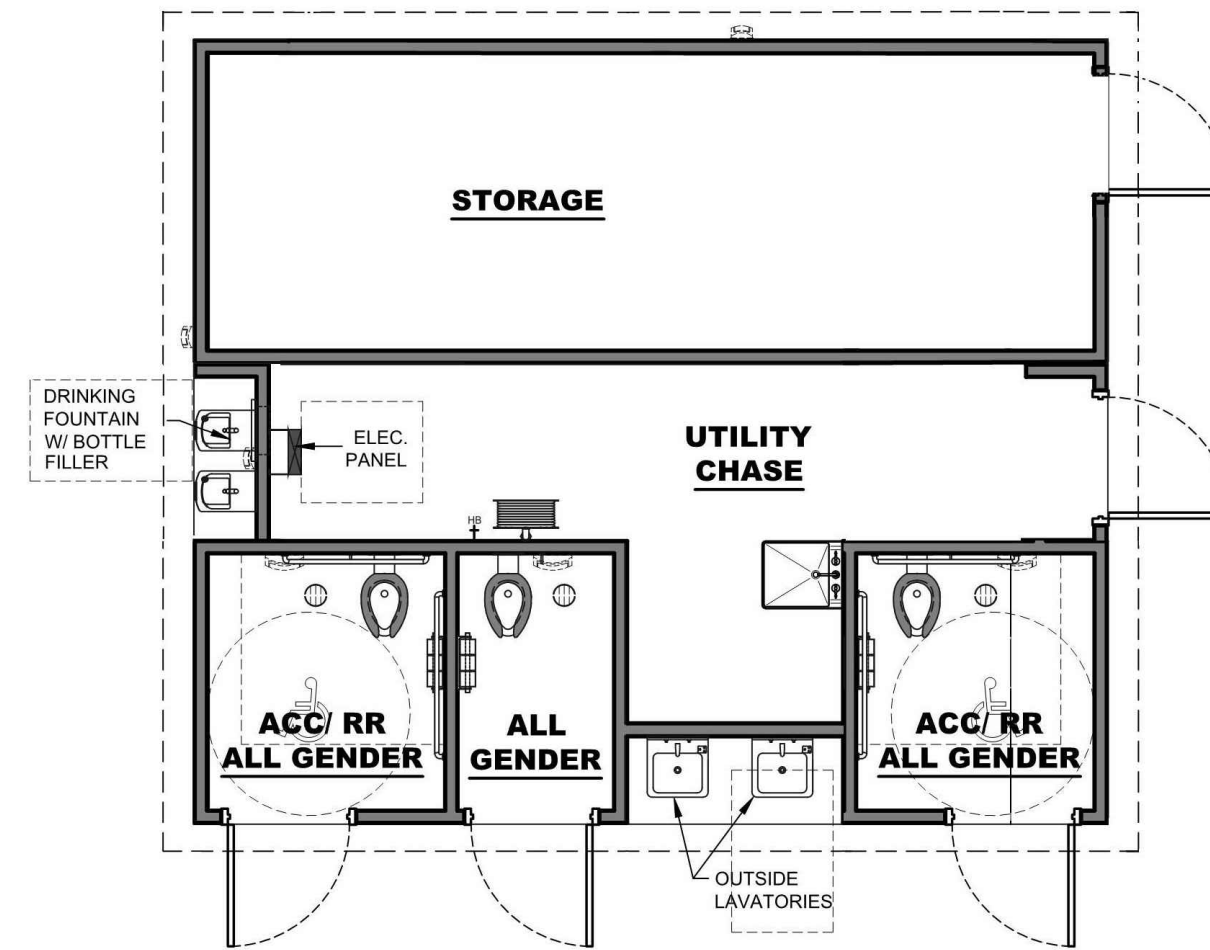


ACCESSIBLE PICNIC TABLES



DUAL BBQ

PICNIC AREA



RESTROOM / STORAGE BUILDING (EXAMPLES ONLY)



FITNESS EQUIPMENT



225 Broadway  
Suite 1160  
San Diego  
California 92101  
619-236-0143  
619-236-0578 fax

OCTOBER 18, 2018  
PARK AMENITIES