



# Fault Line Park General Development Plan Amendment

City of San Diego Park and Recreation Board  
November 15, 2018



**Kathleen Brand, Senior Planner/Landscape Architect**

## Fault Line Park General Development Plan Amendment Existing Conditions



- Park opened in 2015
- Approved by the former City of San Diego Redevelopment Agency
- Owner Participation Agreement with Pinnacle Development
- Pinnacle maintains the park under a Landscape Maintenance Agreement



### Fault Line Park General Development Plan Amendment Existing Conditions



- Children's Play area

14<sup>th</sup> Street

Island Avenue

J Street



3

### Fault Line Park General Development Plan Amendment Existing Conditions



- Children's Play area
- Open Lawn

14<sup>th</sup> Street


Island Avenue

J Street



4


## Fault Line Park General Development Plan Amendment Existing Conditions



- Children's Play area
- Open Lawn
- Passive rolling mounds of grass

5

## Fault Line Park General Development Plan Amendment Existing Conditions



- Children's Play area
- Open Lawn
- Passive rolling mounds of grass
- Public art piece entitled Fault Whisper

6

## Fault Line Park General Development Plan Amendment Existing Conditions



- Children's Play area
- Open Lawn
- Passive rolling mounds of grass
- Public art piece entitled Fault Whisper
- Café building with public restrooms owned by Pinnacle

## Fault Line Park General Development Plan Amendment Proposed Off-Leash Dog Run



- Children's Play area
- Open Lawn
- Passive rolling mounds of grass
- Public art piece entitled Fault Whisper
- Café building with public restrooms owned by Pinnacle
- Off-Leash Dog Run



**Fault Line Park General Development Plan Amendment**  
Workshop #1

**Workshop #1 October 24, 2018**

CONCRETE WALKWAY    DOUBLE GATE ENTRANCE    OFF-LEASH DOG RUN W/ ARTIFICIAL TURF    D.G. WALKWAY    FENCE    EXISTING BENCH TYP    EXISTING PLANTING AREA    DOUBLE GATE ENTRANCE

FAULT LINE PARK  
OFF-LEASH DOG RUN

DEVELOPED FOR CIVIC SAN DIEGO ON BEHALF  
OF SAN DIEGO PARKS AND RECREATION

SPURLOCK  
LANDSCAPE ARCHITECTS

9

**Fault Line Park General Development Plan Amendment**  
Workshop #1

**Workshop #1 October 24, 2018**

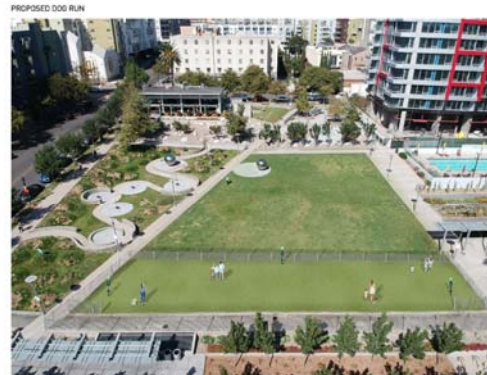
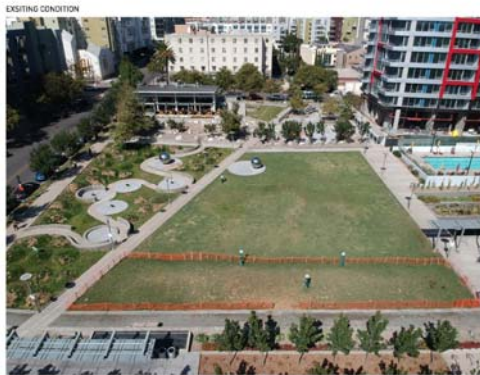
**OMEGA 10 FENCE**

**K9 GRASS**

10

# Fault Line Park General Development Plan Amendment Workshop #1

## Workshop #1 October 24, 2018



# Fault Line Park General Development Plan Amendment Workshop #2

## Workshop #2 November 14, 2018



FAULT LINE PARK  
OFF-LEASH DOG RUN

DEVELOPED FOR CIVIC SAN DIEGO ON BEHALF  
OF SAN DIEGO PARKS AND RECREATION

SCALE 1/8" = 1'-0"  
SPURLOCK  
LANDSCAPE ARCHITECTS

# Fault Line Park General Development Plan Amendment

Staff Recommendation

Should the Park and Recreation Board approve Fault Line Park's General Development Plan Amendment?

