

HENDRIX POND / AVIARY PARK

PROPOSED GENERAL DEVELOPMENT PLAN

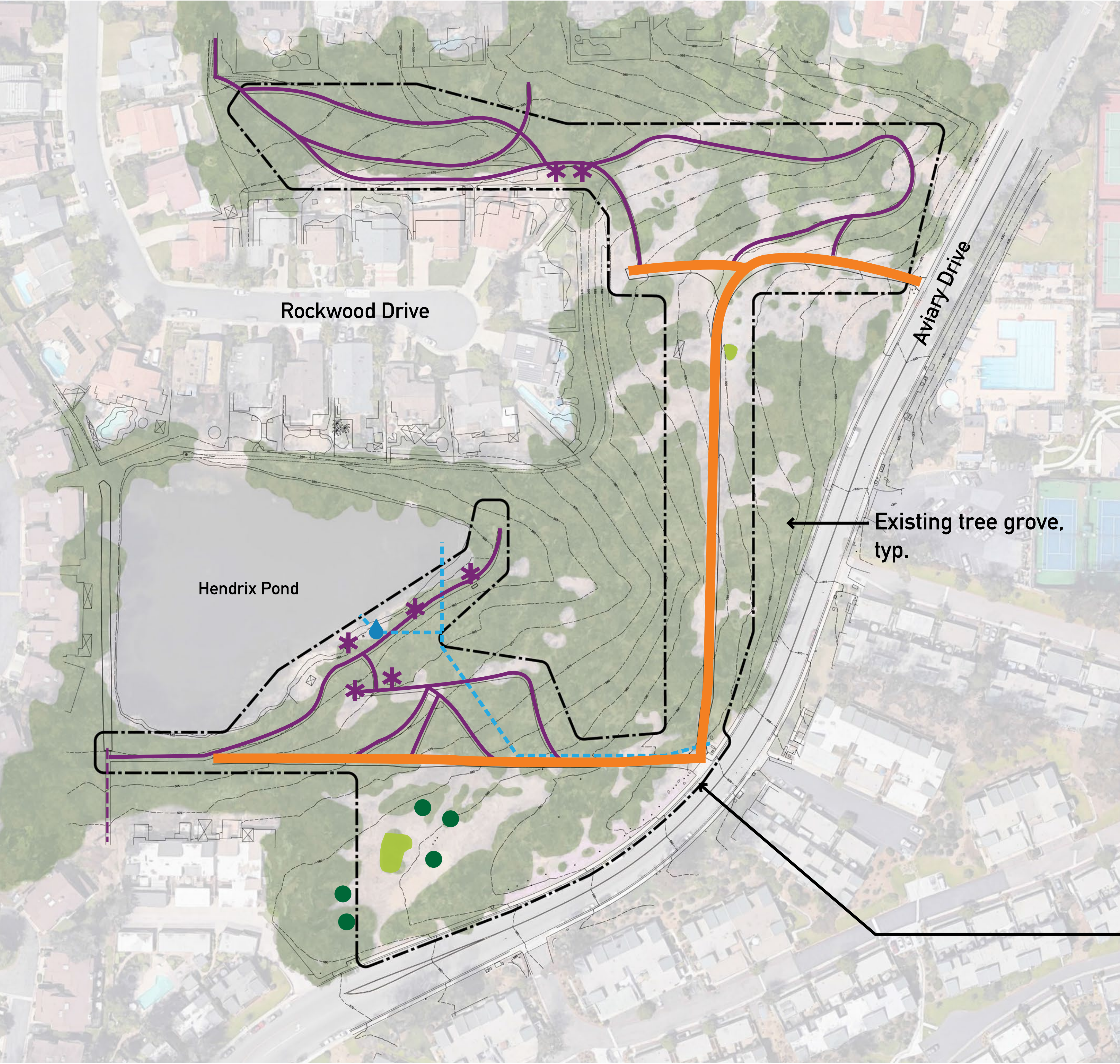
Park and Rec Board

January 16, 2020 2pm



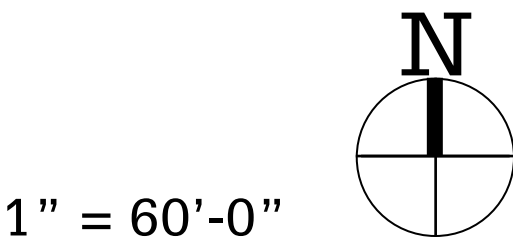
HENDRIX POND / AVIARY PARK

Site Inventory



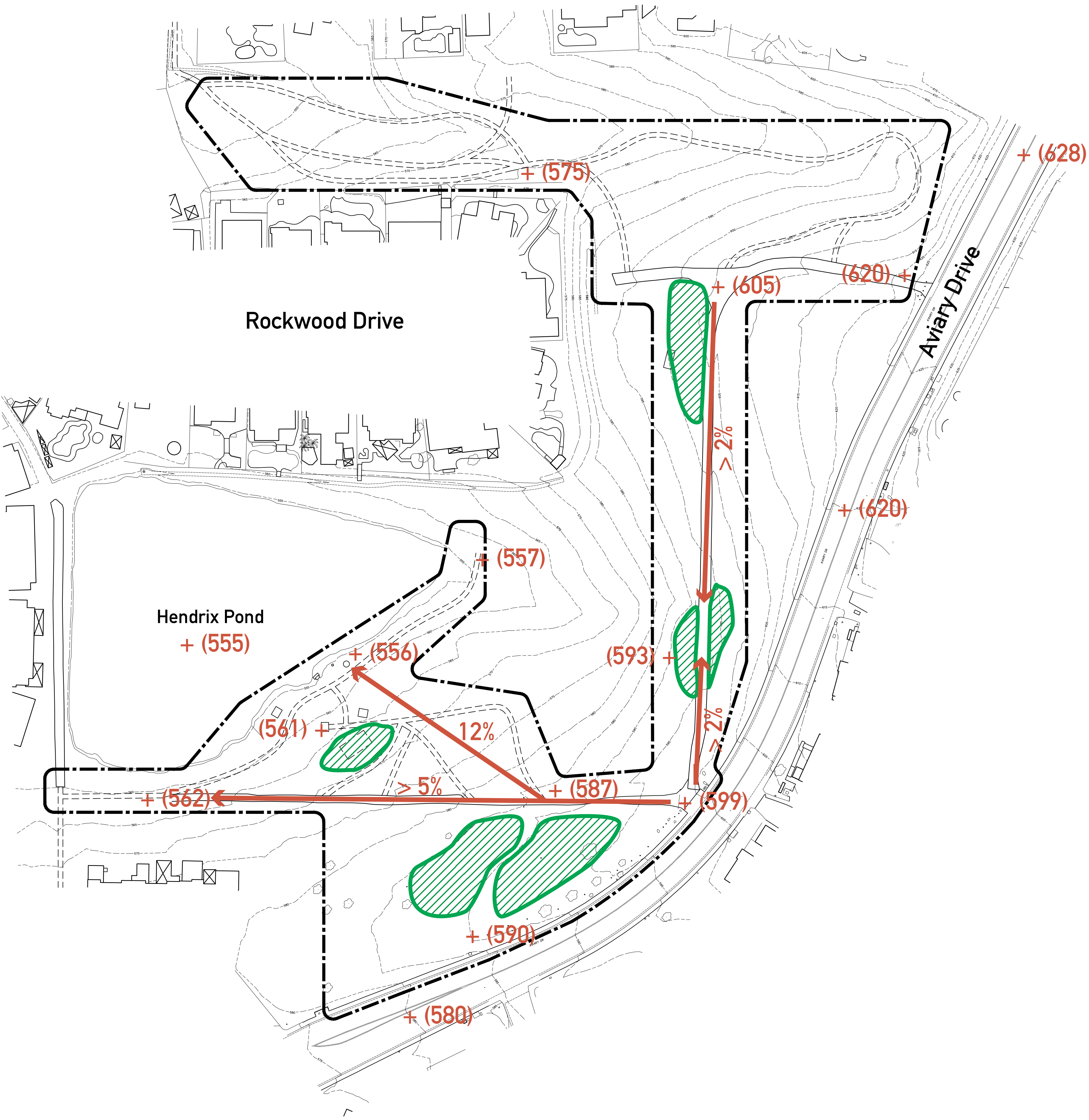
- LEGEND
- Existing vehicular road
 - Existing bark mulch trail
 - Existing water main
 - Existing picnic tables / seating
 - Existing water fountain
 - Olive trees to remain
 - Opuntia to remain
 - Limit of work

Scope of work area:
6.5 Acres



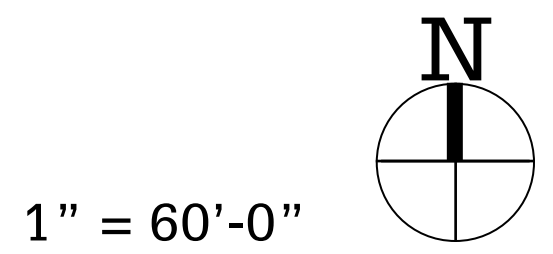
HENDRIX POND / AVIARY PARK

Slope Analysis



LEGEND

- Potential level area for program
- + (620) Existing spot elevation
- Limit of work



HENDRIX POND / AVIARY PARK

Site Photos



BOLLARDS AND SERVICE ROAD



CONCRETE PICNIC TABLE AND FORMER PLAYGROUND AREA



WATER FOUNTAIN



TRAIL TO POND'S EDGE



TYPICAL BENCH



TYPICAL PICNIC TABLE



POTENTIAL LEVEL AREA NEAR STORAGE CONTAINER



POTENTIAL LEVEL AREA NEAR PARK ENTRANCE



SIDEWALK CONDITION

HENDRIX POND / AVIARY PARK

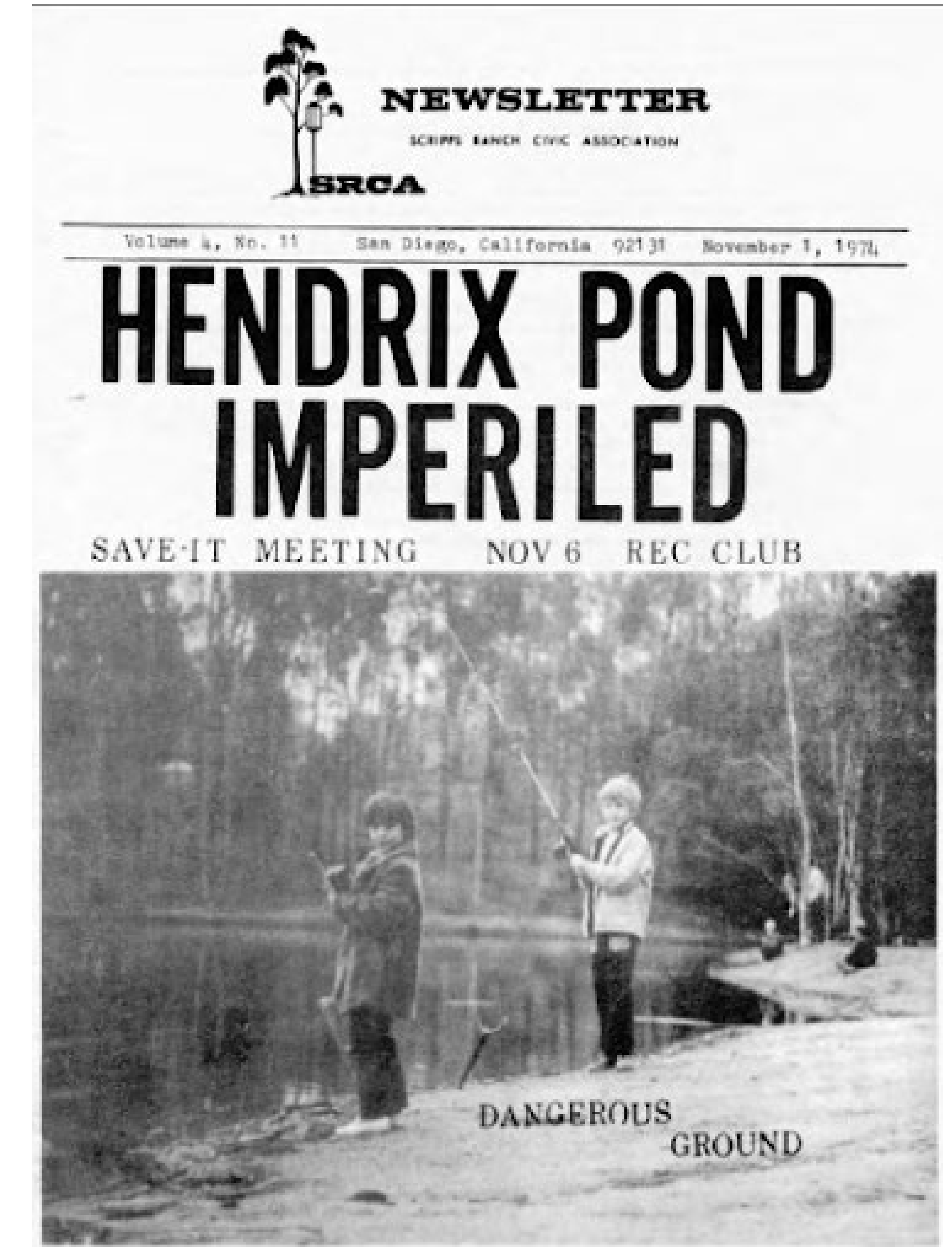
Site History



1889: E.W. Scripps Builds Miramar Ranch and Mansion, ponds are created on the ranch for water collection and livestock



1930: Bert and Katherine Hendrix move into a cottage near a pond on Miramar Ranch

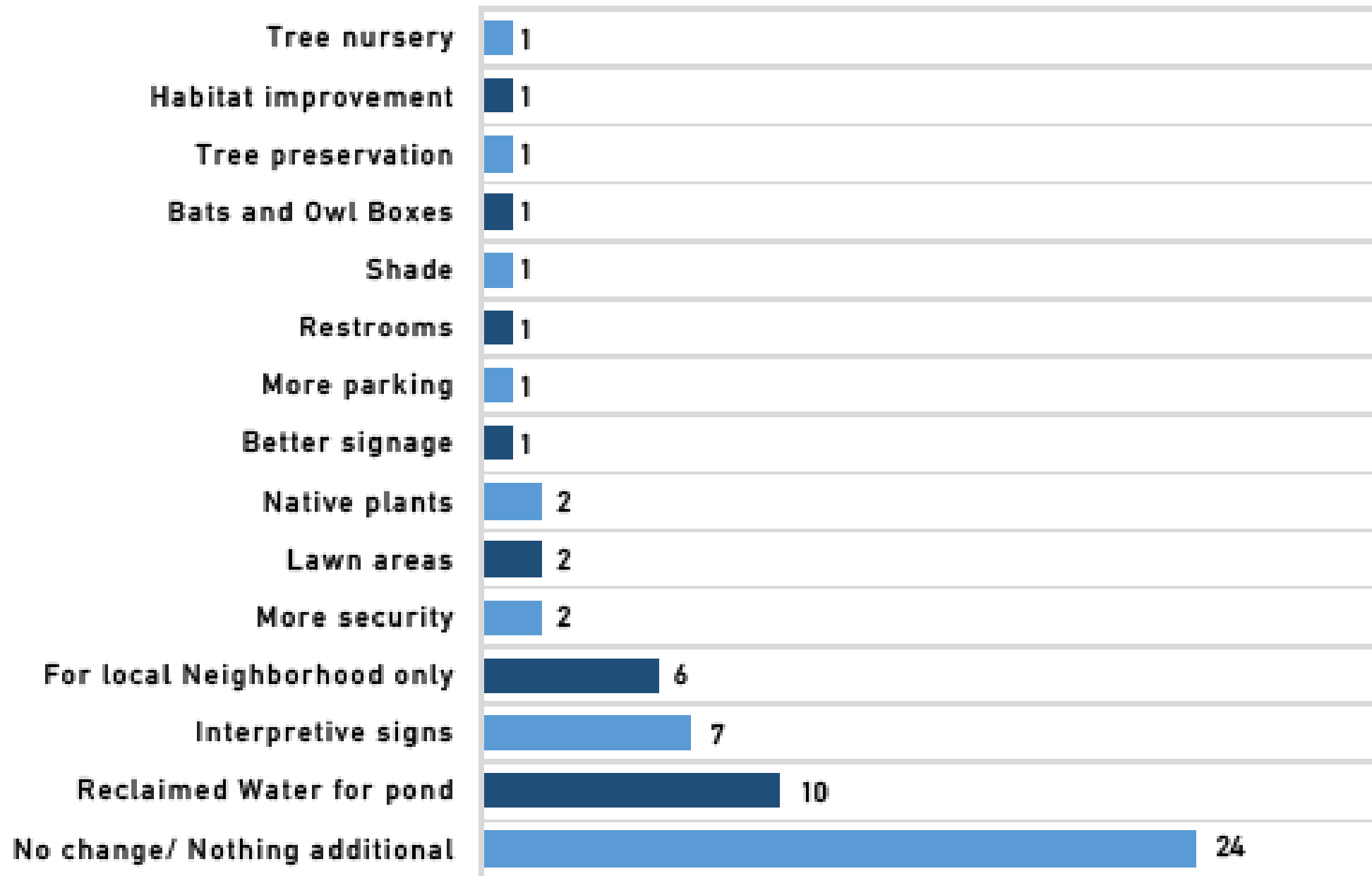


1975: Community effort to “Save Hendrix Pond” from nearby condominium development in turn leads to the pond being deeded over to the city

HENDRIX POND / AVIARY PARK

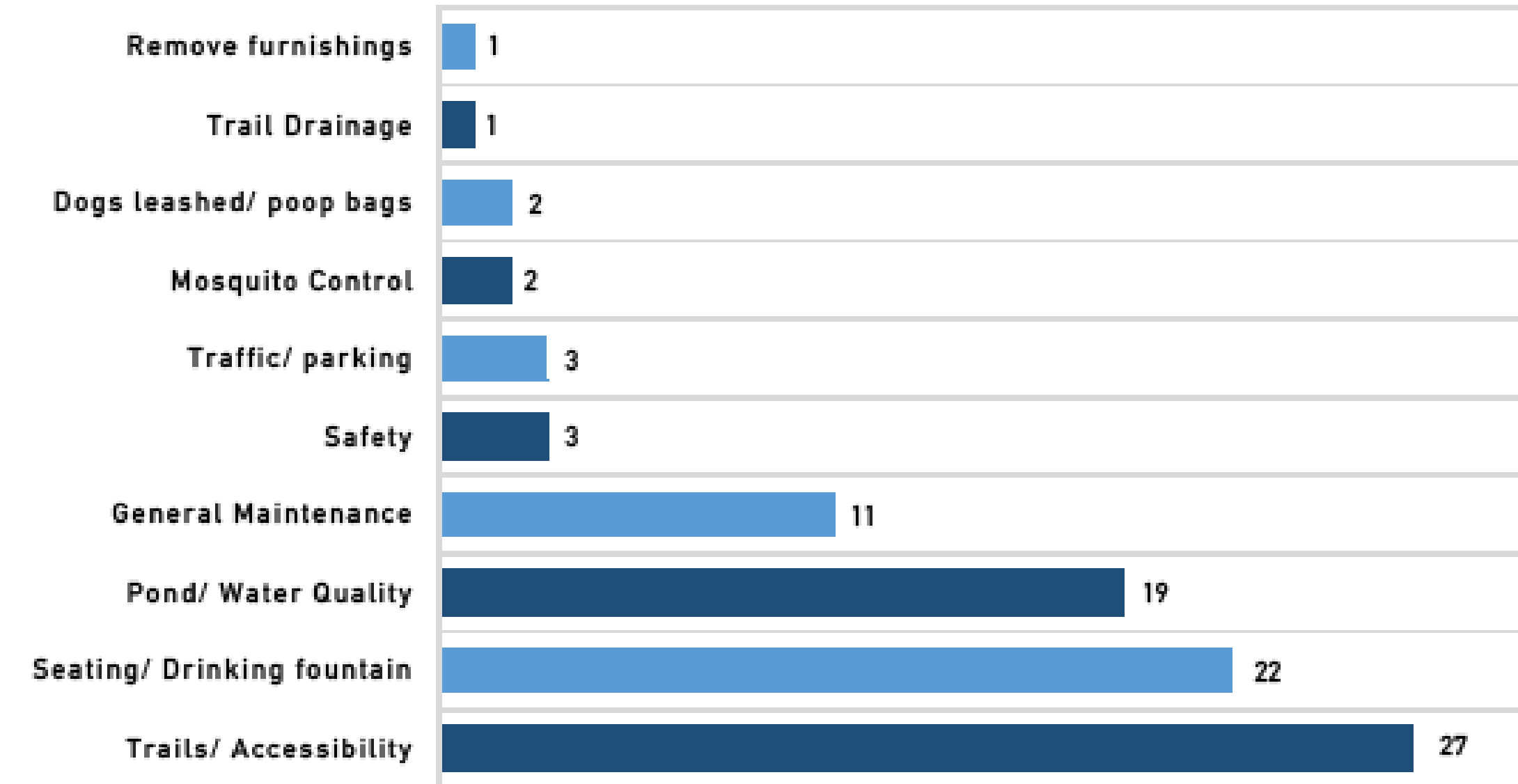
Workshop Survey Results

Wish to See



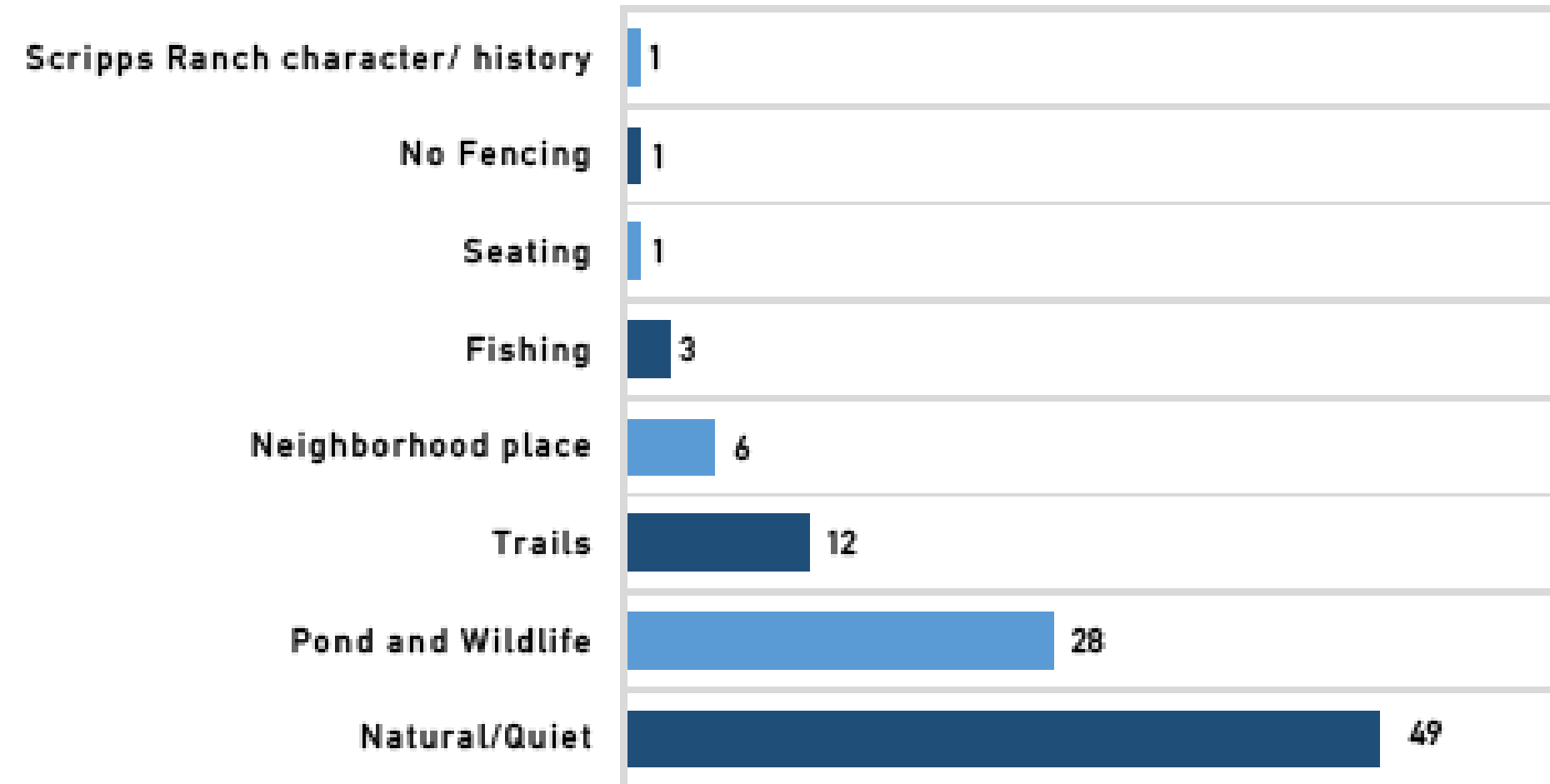
- Generally keep the park as is
- Improve pond water quality
- Maintain quiet, “neighborhood feel”
- Improve the natural assets

Existing to be Improved



- Maintain trails and improve accessibility
- Maintain or improve site furnishings
- Improve pond water quality
- Improve general maintenance

Favorite Qualities



- Like quiet and natural qualities of the park
- Appreciate trail system
- Mostly used by neighbors and local residents

HENDRIX POND / AVIARY PARK

Workshop #2 Preliminary Schemes

Option 1:



- Resurface asphalt service road
- Replenish bark mulch trails
- Restore planting in eroded areas
- Repair broken slats at benches and tables

Option 2:

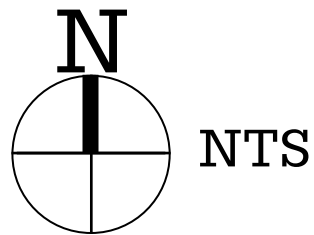


- Resurface asphalt service road
- Replenish bark mulch trails
- Restore planting in eroded areas
- Repair broken slats at benches and tables
- Add accessible trail down to pond
- Add accessible bench, picnic table, trash can and water fountain
- Add accessible parallel parking stall
- Add mid-block crosswalk to Aviary drive
- Add habitat garden
- Add olive grove
- Add multipurpose bark mulch areas

Option 3:

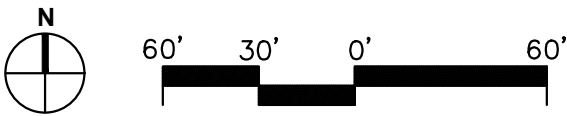


- Resurface asphalt service road
- Replenish bark mulch trails
- Restore planting in eroded areas
- Add accessible trail down to pond
- Add accessible bench, picnic table, trash can and water fountain
- Add accessible parallel parking stall
- Add mid-block crosswalk to Aviary drive
- Add habitat garden
- Add olive grove
- Replace (2) benches and (1) picnic table
- Add multipurpose meadow areas
- Add viewing platform



HENDRIX POND / AVIARY PARK

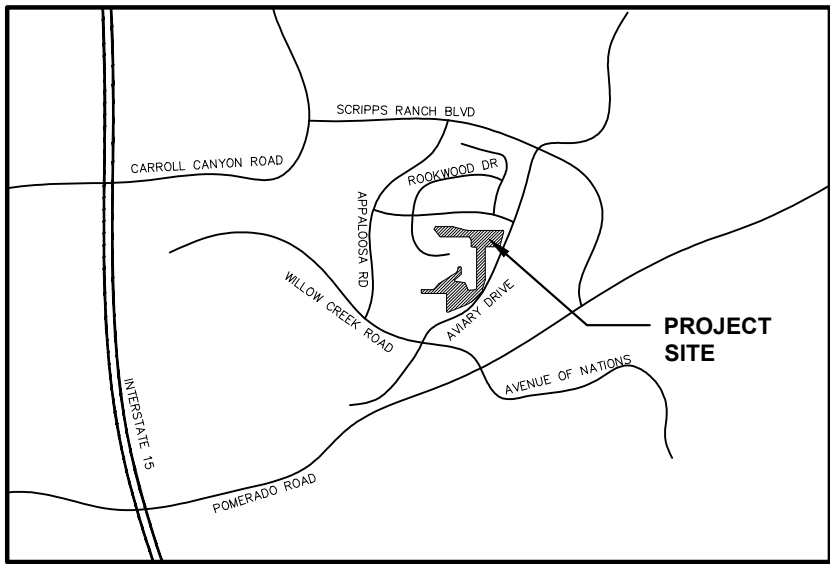
Proposed General Development Plan



IMPROVEMENTS LEGEND

- 1 RESURFACED ASPHALT SERVICE DRIVE
 - 2 REPLENISHED BARK MULCH TRAIL
 - 3 REPLACED SIDEWALK PER CITY STANDARDS
 - 4 REPLACED BENCH
 - 5 REPLACED PICNIC TABLE
 - 6 STABILIZED DECOMPOSED GRANITE TRAIL
 - 7 MID-BLOCK CROSSWALK WITH RECTANGULAR RAPID FLASHING BEACON
 - 8 REMOVABLE BOLLARDS
 - 9 BOULDERS
 - 10 8" HIGH CONCRETE CURB
 - 11 8" PVC RECLAIMED WATER LINE
 - 12 VIEWING PLATFORM
 - 13 ACCESSIBLE BENCH
 - 14 ACCESSIBLE PICNIC TABLE
 - 15 ACCESSIBLE TRASH CAN
 - 16 ACCESSIBLE WATER FOUNTAIN
 - 17 ACCESSIBLE PARALLEL PARKING STALL
 - 18 ACCESSIBLE TRAIL SIGNAGE
 - 19 ACCESSIBLE INTERPRETIVE SIGNAGE
 - 20 ACCESSIBLE MONUMENT SIGNAGE
- PROPOSED TOPOGRAPHY
--- 585 --- EXISTING TOPOGRAPHY

VICINITY MAP

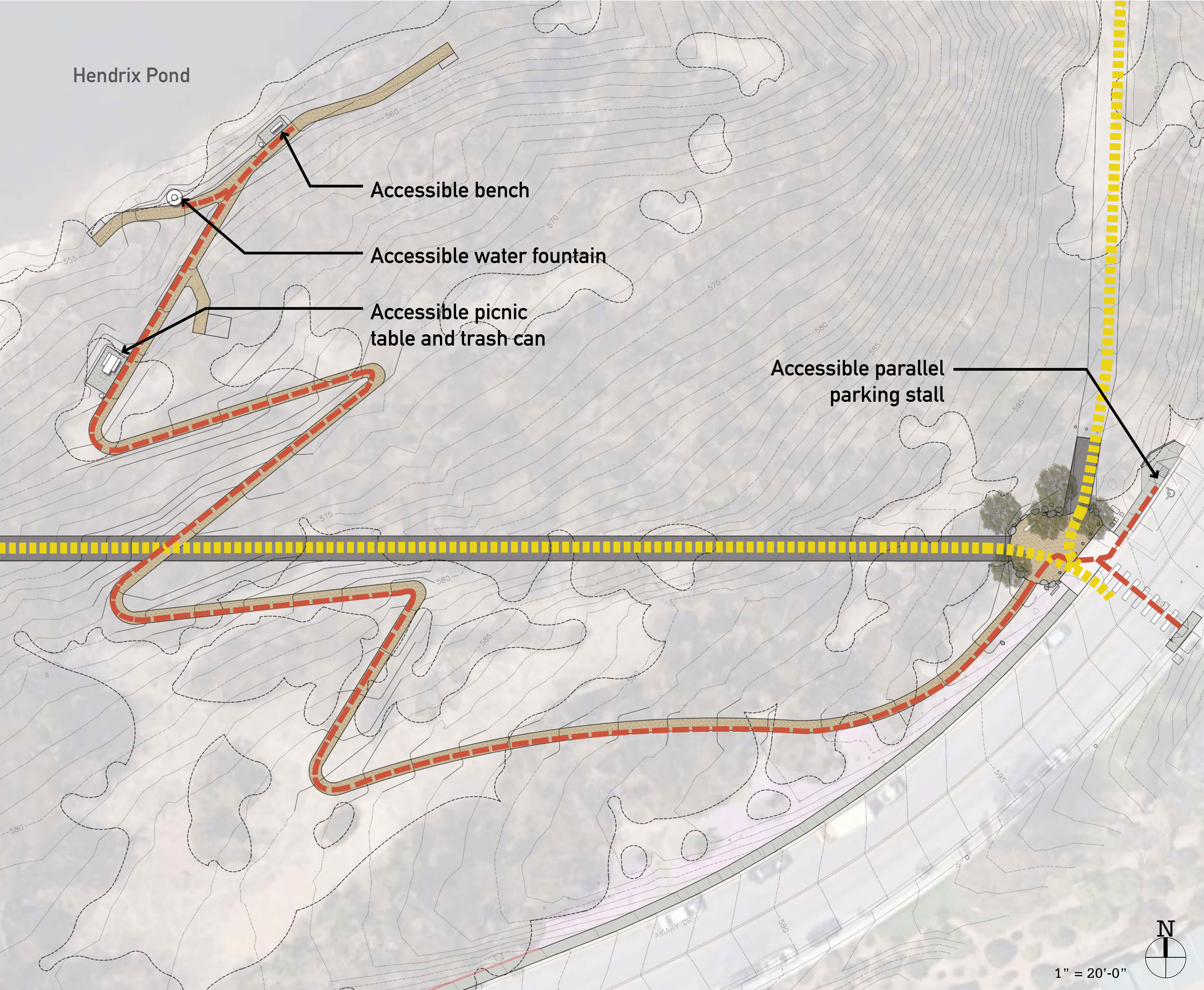


PLANTING LEGEND

	SPECIMEN TREE
48" BOX, SPECIES SUCH AS:	
OLEA EUROPEA 'WILSONII'	FRUTLESS OLIVE
	GROVE TREE
80% 24" BOX, 20% 48" BOX, SPECIES SUCH AS:	
EUCALYPTUS SPP.	TO MATCH EXISTING
	EXISTING TREE GROVE TO REMAIN
	HABITAT GARDEN
75% 5 GAL, 25% 15 GAL, SPECIES SUCH AS:	
ASCLEPIAS TUBEROSA	BUTTERFLY FLOWER
CEANOTHUS SPP.	CEANOTHUS
ROSMARINUS SPP.	ROSEMARY
SALVIA SPP.	SAGE
PENSTEMON HETEROPHYLLA 'MARGARITA BOP'	BEARD TONGUE 'MARGARITA BOP'
TAGETES LEMMONII	MEXICAN MARIGOLD
TECOMA STANS	YELLOW BELLS
	MEADOW
HYDROSEED GRASS MEADOW MIX, SPECIES SUCH AS:	
CAREX DIVULSA	BERKELEY SEDGE
CAREX PANSA	CALIFORNIA MEADOW SEDGE
FESTUCA RUBRA	RED FESCUE
	RESTORED PLANTING
80% 5 GAL, 20% 15 GAL, SPECIES SUCH AS:	
ARTEMISIA CALIFORNICA	CALIFORNIA SAGEBRUSH
CEANOTHUS SPP.	CEANOTHUS
BACCHARIS SPP.	COYOTE BRUSH
RHUS INTEGRIFOLIA	LEMONADEBERRY
RHAMNUS CALIFORNICA	COFFEEBERRY

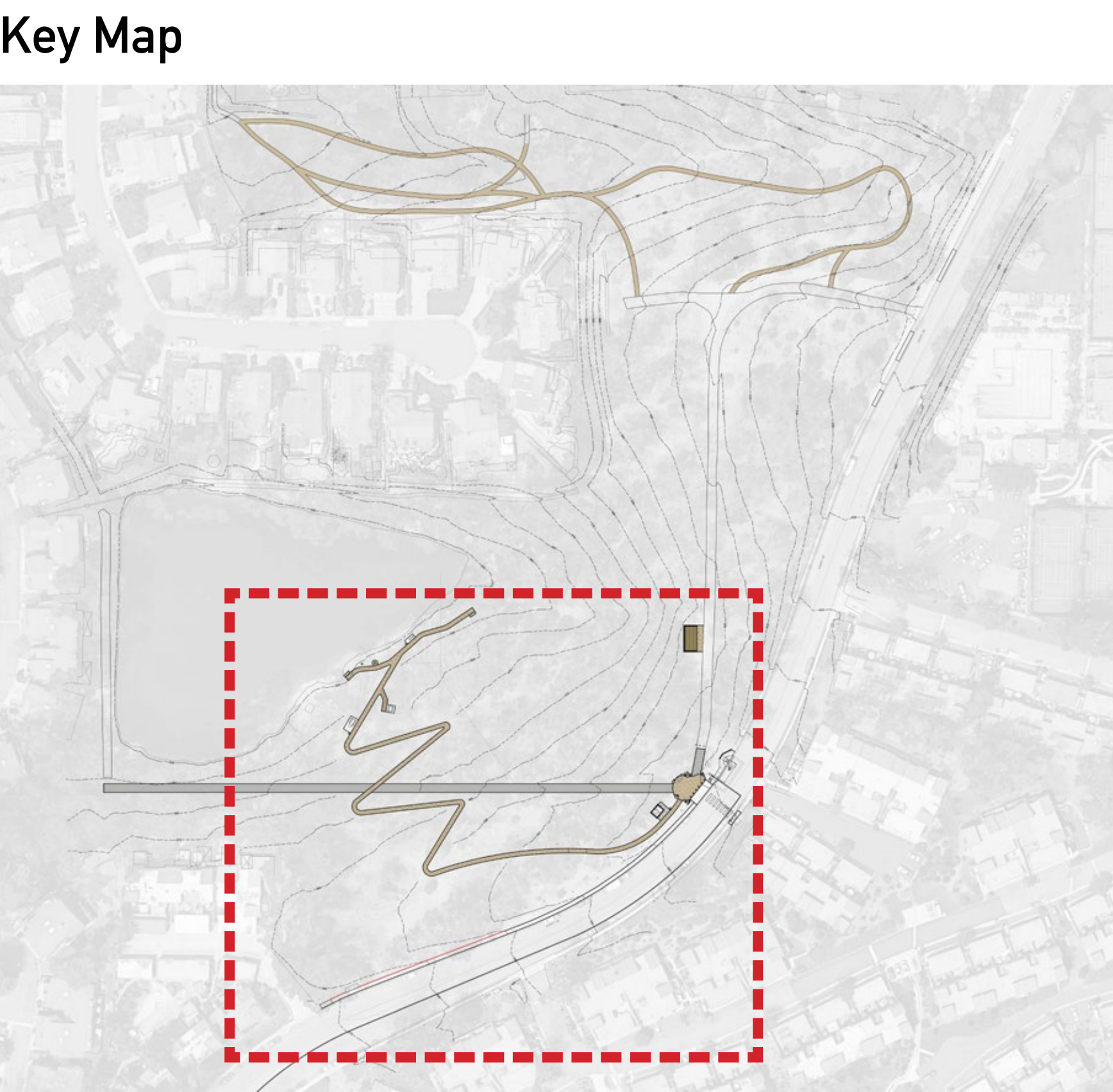
HENDRIX POND / AVIARY PARK

Accessibility



Legend

- Accessible Path of Travel
- Service Access



HENDRIX POND / AVIARY PARK

Character Imagery



Decomposed Granite Trail



Viewing Platform



Interpretive Signage



Monument Signage and Entry Plaza



Trail Sigange



Accessible Water Fountain



Removable Bollard



Accessible Bench



Accessible Picnic Table



Meadow / Hillside Planting



Habitat Garden



Restored Planting



Eucalyptus Grove

HENDRIX POND / AVIARY PARK

Thank you.

