

Kearny Mesa Community Plan Update Parks, Recreation, and Open Space

**Park and Recreation Board Meeting:
June 18, 2020**

Lisa Lind, Senior Planner **Scott Sandel**, Parks Designer

Presentation Outline

- Community Plan Update summary
- Planned Park and Recreation section:
 - results & summary

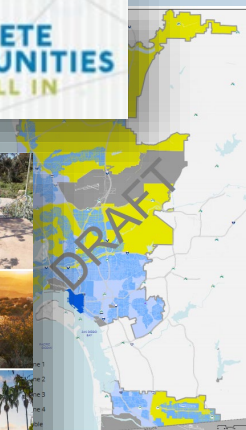
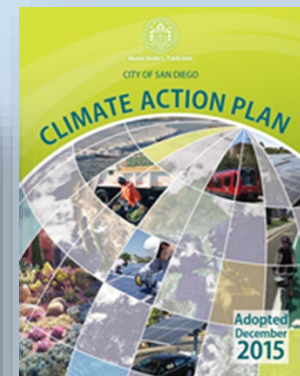
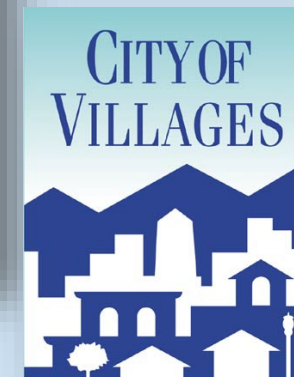
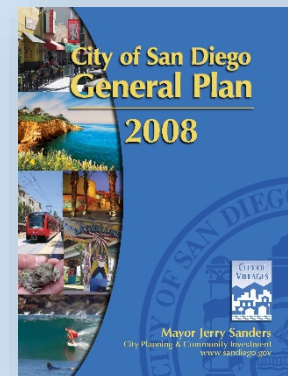
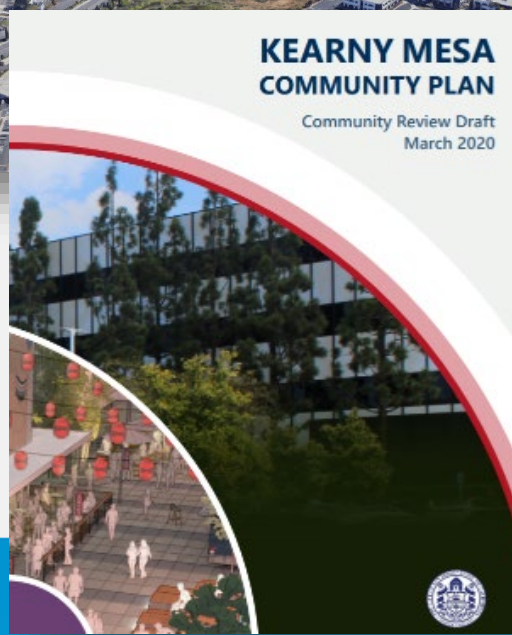


Link to Draft Plan

<http://kearnymesaconnected.com/plan-documents/>

Community Plan Update

- Comprehensive plan update
- Long-range plan aligned with General Plan & Climate Action Plan



Community Plan Update

2016

Plan Update
Launch

2017

Existing
Conditions and
Visioning

2018

Development of
Plan Alternatives
and Draft Plan
Preparation

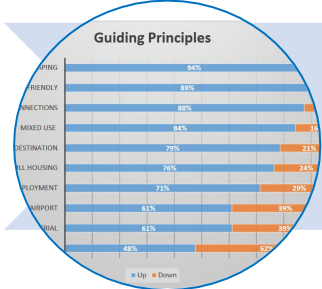
2019

Environmental
Review

2020

Final
Community Plan
and EIR

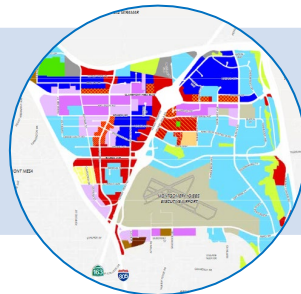
Outreach and
Survey Input



Draft
Scenarios



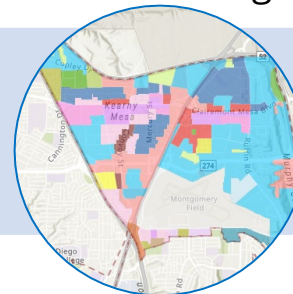
Draft Land Use



Community
Review
Draft



Draft Zoning



Revised Draft
Plan, Zoning
Program

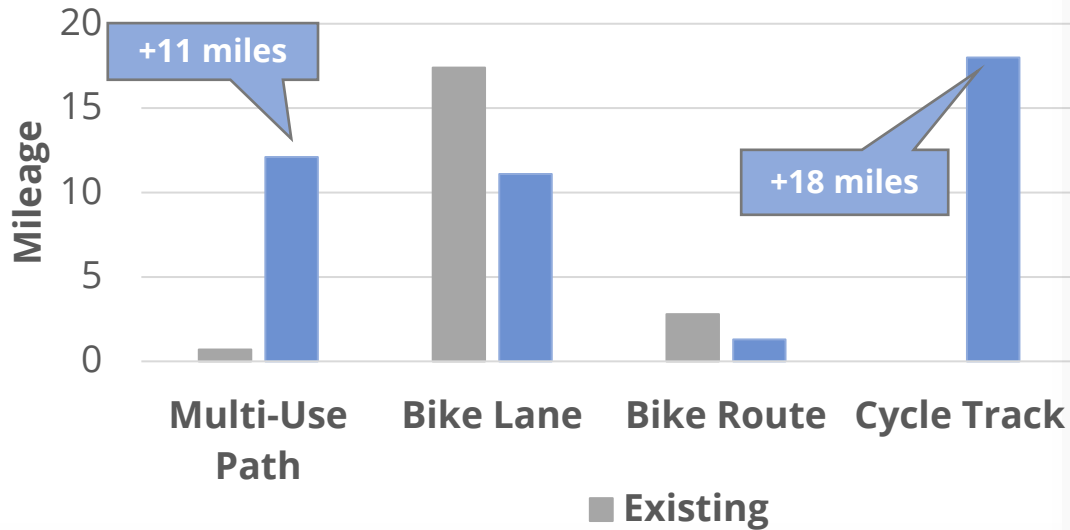


Draft Community Plan

- Vision for a vibrant employment area
- New mixed-use village
- Strong employment cluster

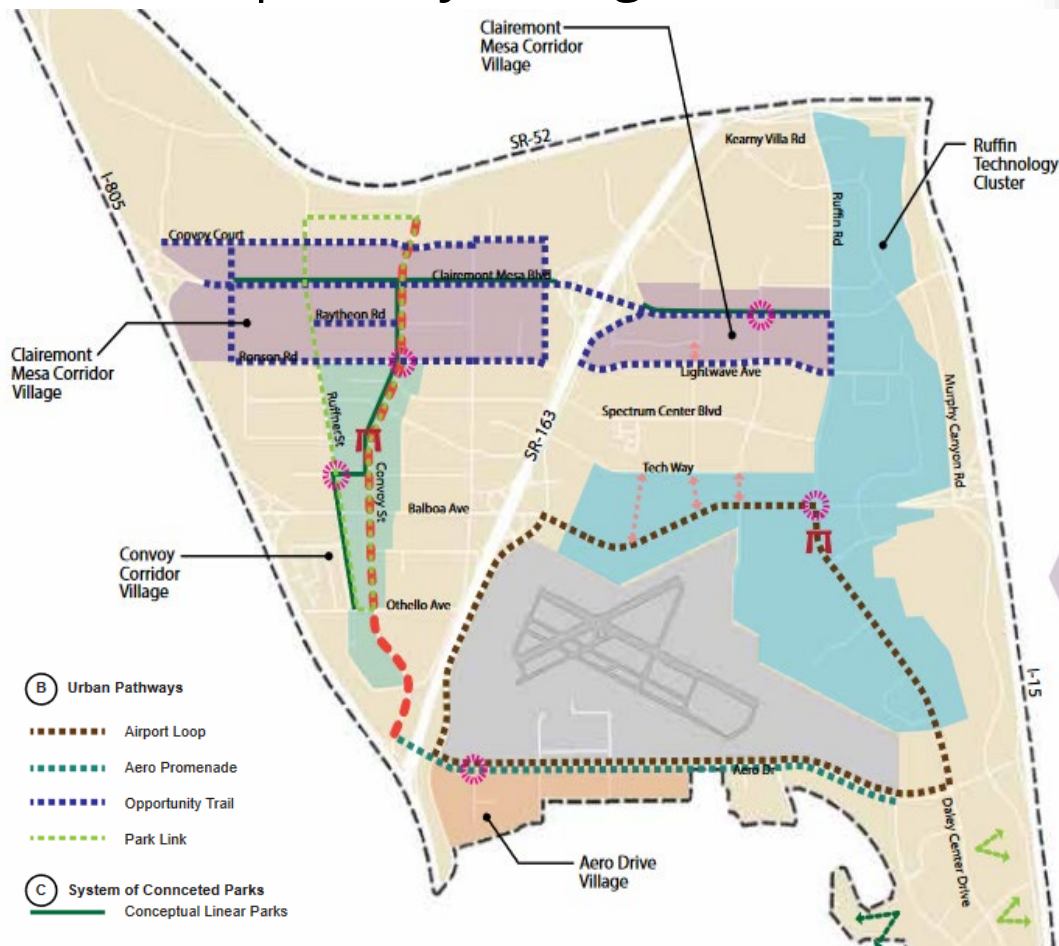


Draft Community Plan



Draft Community Plan

- Village areas
- Multimodal network
- Urban pathways along corridors



Parks Recreation & Open Space Section

A culmination of park planning, integration with the Parks Master Plan and stakeholder input.

6

Parks, Recreation, and Open Space

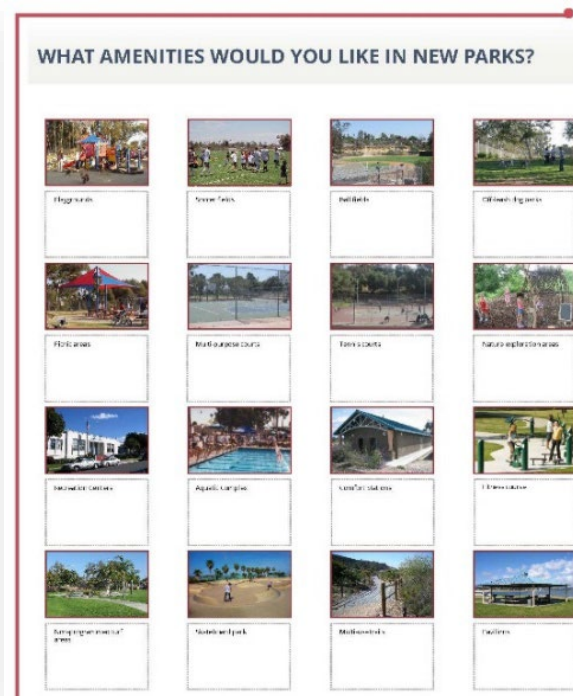
A parks and open space network that combines the best qualities of urban and natural spaces, connects community assets, and encourages people to engage with their surrounding community and environment.

-

[illegible]

Park Input & Engagement

- Input on employee, resident, and visitor park and recreation needs
- Standards and types of park and recreation facilities
- Opportunities for multi-use paths, fitness areas, picnic areas, linear parks, and plazas



EXISTING facilities

Facility	Parks	Recreation Center	Aquatic Complex
Standard	2.8 acres / 12 points per 1,000 residents	17,000 square feet per 25,000 residents	1 complex per 50,000 residents
Existing	7.59 acres / 54 points	0	0

Planned Parks & Recreation

- Planned parks ranging from less than an acre to eight acres with range of amenities
- City-owned sites available for a park, trails, recreation centers and aquatic centers, and planned GDP for Hickman Field

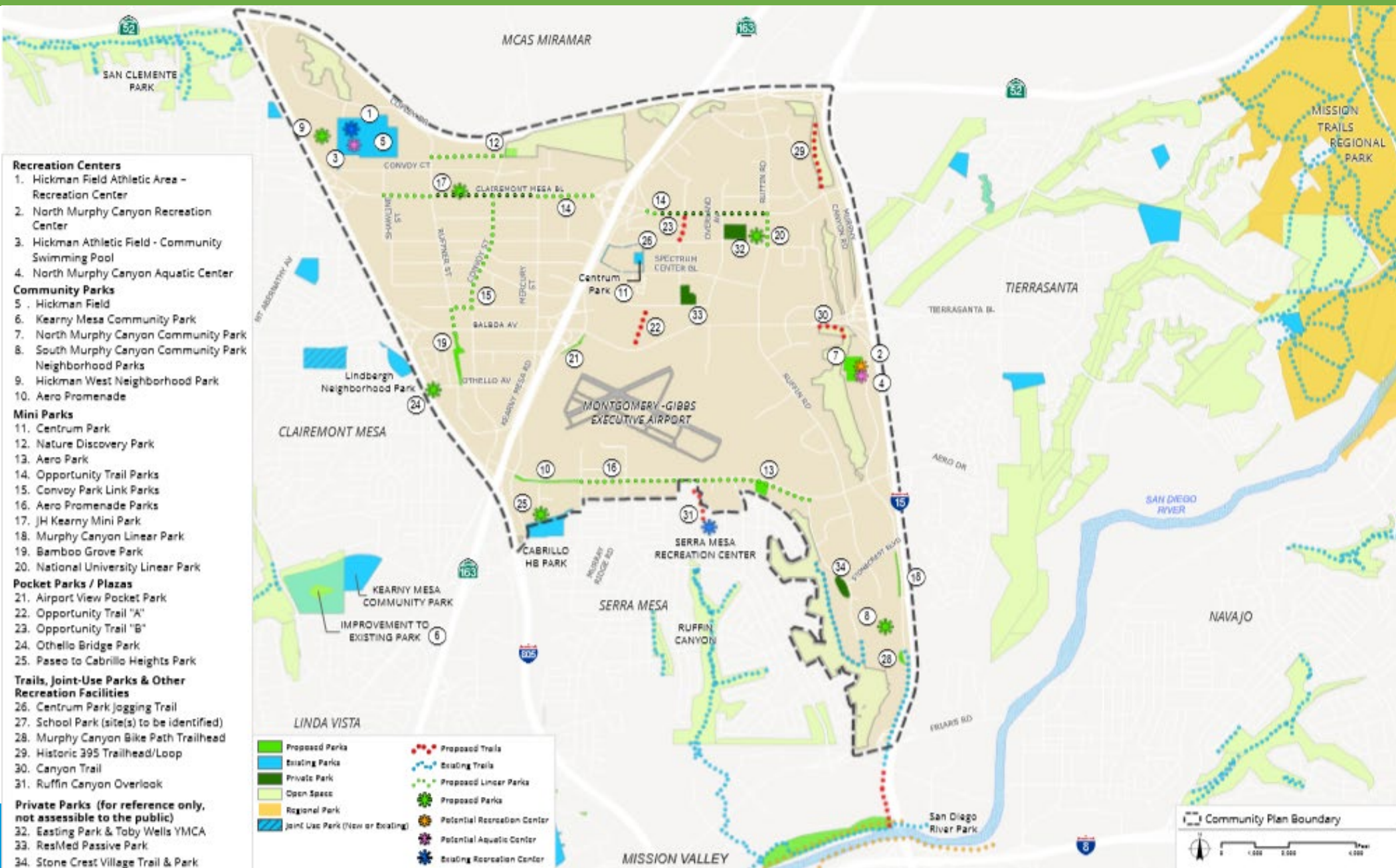


PLANNED facilities

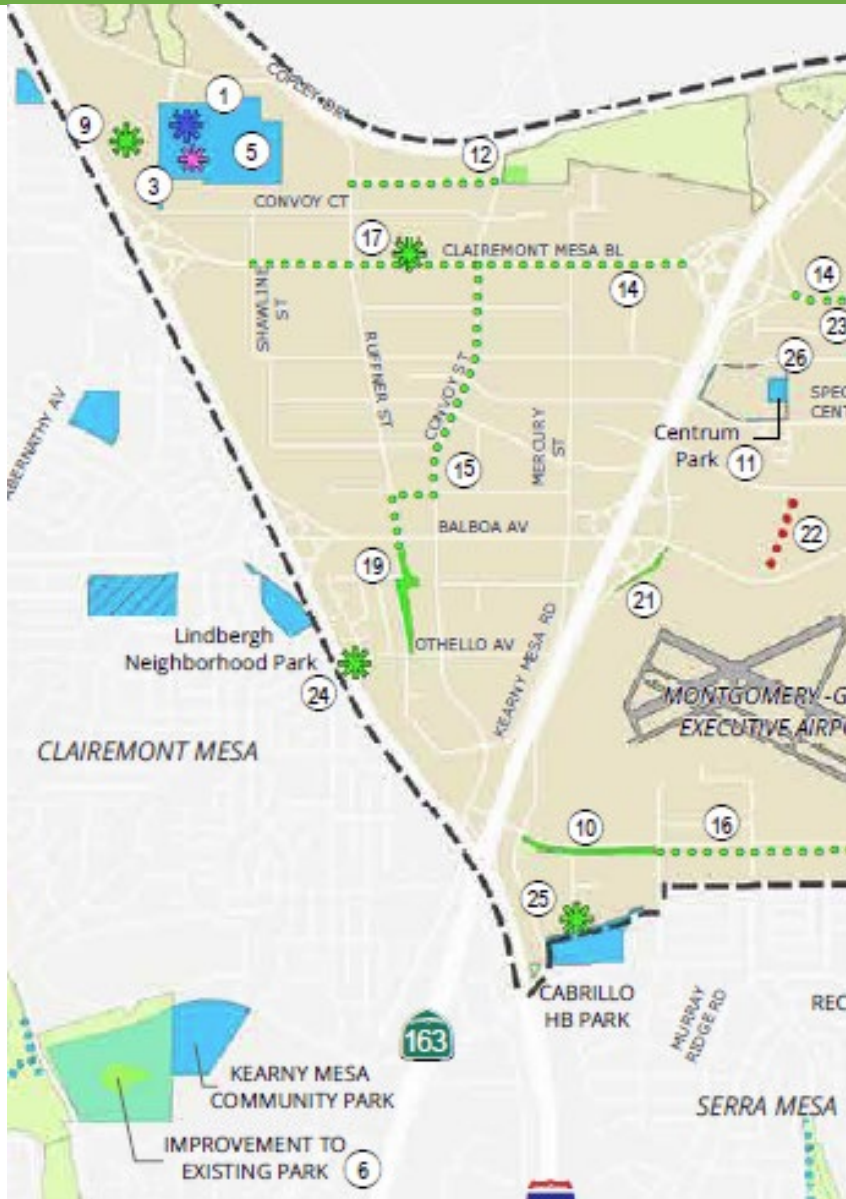
Facility	Parks	Recreation Center	Aquatic Complex
Standard	12 points per 1,000 residents	17,000 square feet per 25,000 residents	1 complex per 50,000 residents
Need	667 value points	40,040 square feet	1.2
Planned / Potential	707 value points	Hickman and Murphy Canyon sites	Hickman and Murphy Canyon sites



Planned Parks & Recreation



Planned Parks & Recreation



Northwest

- Hickman Field GDP [recently approved]
- Connections to Clairemont with Othello Bridge Park, and improvements to Kearny Mesa Community Park
- New recreation facilities within developments in the Convoy Corridor and the Clairemont Mesa Corridor

Planned Parks & Recreation

- Community access to transit and destinations
- Park value consistent with Draft Parks Master Plan

Northwest



play zones contained with picket fencing

public sidewalk promenade with games and stories etched in concrete

cycle track (see Mobility section for locations)

Planned Parks & Recreation



Northeast

- Trails/trailheads at Historic Hwy 395 open space
- Clairmont Mesa Corridor East parks
- North Murphy Canyon Rec Center and Aquatic complex – renovations at the old Charger facility

Planned Parks & Recreation

- Draft Community Plan parks strategy is for a system that encourages people to connect with their parks and trails
- Goals provided to increase park space, improve access, and protect natural areas



Northeast



Planned Parks & Recreation



**North
east**



Planned Parks & Recreation

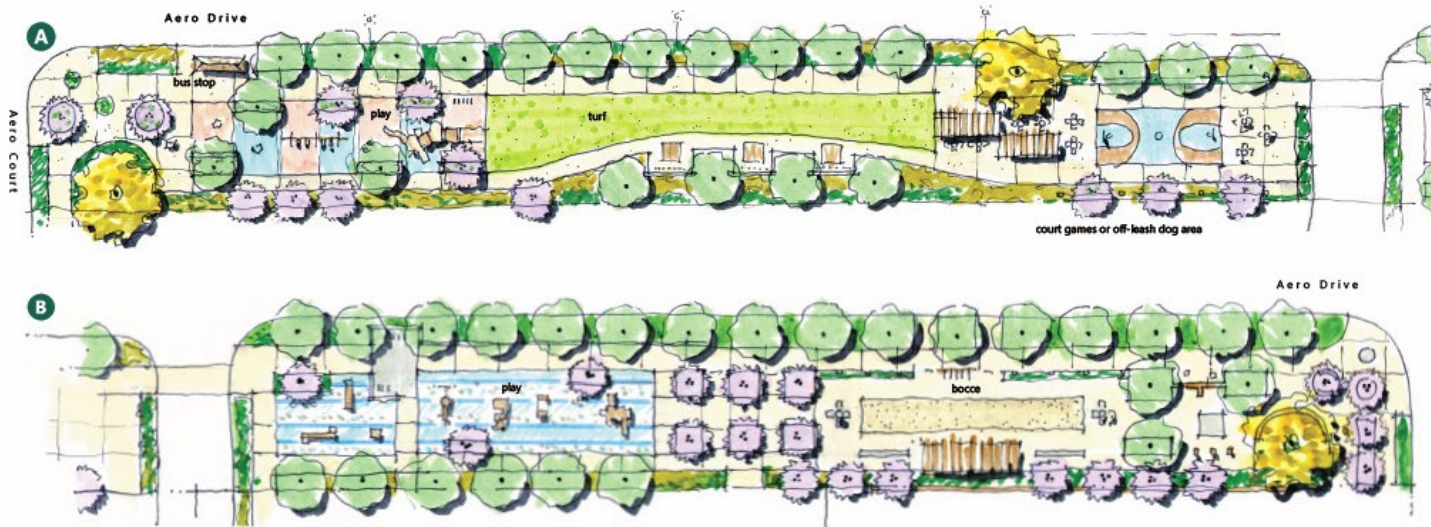


South

- Aero Promenade linear park
- Aero Park (at the Planning Dept. trailers)
- Murphy Canyon Bike Path and Trailhead

Planned Parks and Recreation

Pilot project – Aero Promenade Neighborhood Linear park on City right-of-way: illustrated to show potential & coordinate with neighboring landowners.



South

- ① REMOVABLE BOLLARDS
- ② INFORMATION KIOSK
- ③ NEW BUS SHELTER
- ④ PEDESTRIAN LIGHT @ 75' O.C.
- ⑤ SEATING PLAZA W/ ENHANCED PLANTING
- ⑥ PROMENADE
- ⑦ BIOSWALE
- ⑧ PEDESTRIAN ACCESS
- ⑨ NEW DROUGHT TOLERANT NATIVE PLANTING
- ⑩ BIKE REPAIR CENTER
- ⑪ DOCKLESS BIKE PARKING
- ⑫ ELECTRIC SCOOTER PARKING



Planned Parks and Recreation

South

Smaller neighborhood and mini parks and connections by bike paths/ trails to nearby resource-based parks - Mission Trails & San Diego River Park





Planned Parks and Recreation



Thank you