

Parks and Recreation Department

Normal Heights Elementary School Joint Use Facility General Development Plan Amendment

Park and Recreation Board

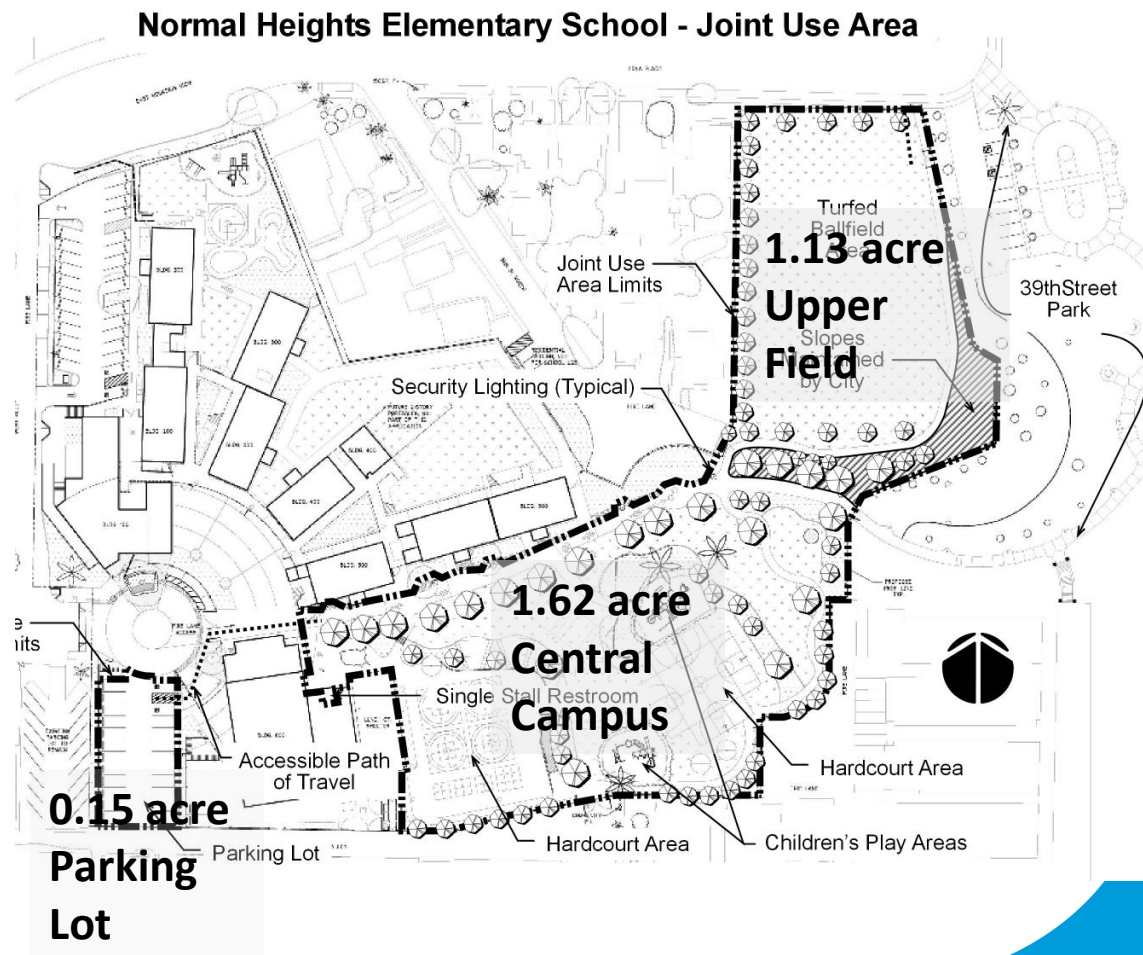
March 17, 2022

Action Item 101

Background

Normal Heights Elementary School GDP

- Joint Use Facility opened to the public in 2012
- Located at 3750 Ward Road in the Normal Heights Community, District 3
- Currently provides 2.90 acres of population-based park land and 84 recreation value points



Proposed GDP Amendment

Removes the Central Campus from joint use

- If approved, the GDP Amendment will remove the Central Campus and off-street parking area from joint use.
- Will result in 1.13 acres park land and 49 Recreation Value Points.
- Represents a decrease of 1.77 acres and 28 RVPs.



Safety and security challenges

Central Campus Joint Use Area

- Landscaped corridor alongside classrooms and multi-purpose building, restrooms, lunch court area, play equipment and hardcourts
- Limited surveillance
- Overnight use and illegal activity



Safety and security challenges

Central Campus Joint Use Area

- Staff and students had very concerning direct interactions with members of the public resisting to leave campus in the morning when students were arriving at school.
- Dangerous drug paraphernalia, evidence of sexual activity, overnight lodging personal items and human waste were frequently encountered by students and staff.
- Parents were increasingly becoming concerned for their children's safety.



Discussion

Community Concerns

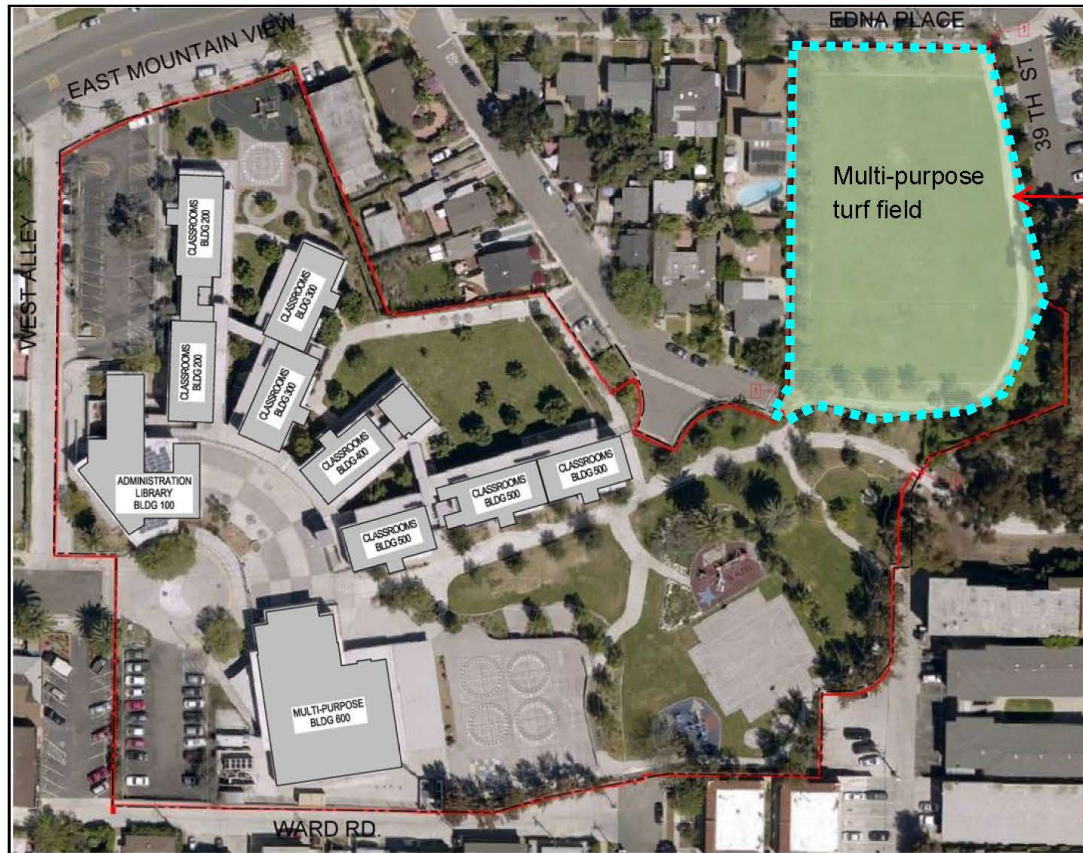
- Safety and Security of Students Staff
- Configuration of the Joint Use Area and Hours of Use
- Needed Park Space in the Neighborhood

Community Recreation Group (CRG) Recommendation

On November 12, 2019, the Adams Recreation Advisory Group voted (5-1-0) to recommend approval of the GDP Amendment for the Normal Heights Elementary School Joint Use Facility.



Proposed GDP Amendment



Joint use area limit

CITY OF SAN DIEGO PARKS AND RECREATION DEPARTMENT

THE GENERAL DEVELOPMENT PLAN

NORMAL HEIGHTS ES JOINT USE

JOINT USE FIELD

LAMBERT COORDINATES:

THOMAS BROTHERS PAGE:

PSD

(PSD #)



Recommendation

Conclusion

- Weighing school safety needs with the need for additional park space, the Department recommends reducing the size of the joint use area per the proposed GDP Amendment.

Alternatives

Other alternatives include nighttime closures or reevaluating the security layout of the campus. Neither of these options are recommended due to cost and impacts to the school.