

COUNCIL DISTRICT: 9

DATE	ACTION	REFERENCE DOCUMENTS			
	SITE ACQUIRED	RESO. NO.	COST \$:		ACRES:
	SITE DEDICATED	ORD. NO.			ACRES:
	GDP CONSULTANT HIRED	RESO. NO.	NAME:		
	P&R BOARD APPROVAL	PF&R APPROVAL			
	INITIAL DEVELOPMENT	CIP NO.	J.O. NO.	DRWG. NO.	
		CIP NO.	J.O. NO.	DRWG. NO.	
		CIP NO.	J.O. NO.	DRWG. NO.	
		CIP NO.	J.O. NO.	DRWG. NO.	
		CIP NO.	J.O. NO.	DRWG. NO.	
		CIP NO.	J.O. NO.	DRWG. NO.	
		CIP NO.	J.O. NO.	DRWG. NO.	

IMPROVEMENTS SUMMARY (DATA FROM AS-BUILT DRAWINGS)					
ITEM	QUANTITY	ITEM	QUANTITY	ITEM	QUANTITY
TOTAL SITE	9.7 AC	AMPHITHEATER	3,290 SF	CONCRETE WALKWAYS	60,590 SF
IMPROVED AREA	9.7 AC	NATURE EXPLORATION	3,235 SF	D.G. PAVING	51,165 SF
TURF	1.75 AC	PLAY AREA 2-5, 5-12	8,383 SF	SPORTS SURFACING	12,575 SF
UNDERSTORY PLANTING	1.87 AC	BIKE RACK	6	RUBBERIZED SURFACE	10,963 SF
BUFFER PLANTING	.97 AC	BASKETBALL COURT	7,175 SF	ACCESSIBLE CURB RAMP	138 SF
VEGETATIVE BASIN	22,172 SF	PICKLEBALL COURT	5,400 SF	CONCRETE MOW CURB	642 LF
MULCH AREA	1,420 SF	FITNESS EQUIPMENT	11 PCS	C.I.P. CONCRETE WALL	245 LF
FIBAR	3,235 SF	SWING SET W/ 4 SWINGS	1	PET WASTE STATION	2
TREES	210	PREFAB RESTROOM	132 SF	PERIMETER FENCING	1,884 LF
DOG PARK	10,080 SF	SHADE CANOPY STRUCTURE	5,603 SF	BOULDERS 3X3, 4X4, 5X5	301
GARDEN BEDS 5' X 20'	20	COBBLE	921 SF	SEATING BOULDERS	8
				REVISION	

CITY OF SAN DIEGO PARK AND RECREATION DEPARTMENT

THE GENERAL DEVELOPMENT PLAN

CHOLLAS TRIANGLE PARK

LAMBERT COORDINATES: 212-1746

THOMAS BROTHERS PAGE: 1270, GRID B5 & B6

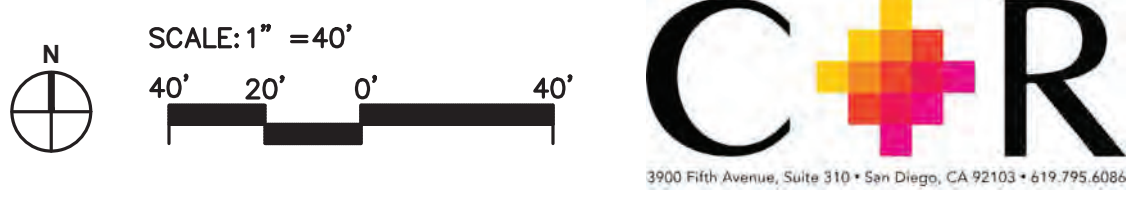
CONSTRUCTION NOTES

- 1 PROTECT IN PLACE
- 2 CONSTRUCT CURB RAMP PER SDPWC-130 THROUGH SDPWC-138
- 3 CONSTRUCT BIOFILTRATION BASIN
- 4 CONSTRUCT 18" RCP STORM DRAIN
- 5 TIE INTO EXISTING STORM DRAIN
- 6 CONSTRUCT BMP OVERFLOW STRUCTURE
- 7 REMOVE AND DISPOSE
- 8 CONSTRUCT CURB INLET PER SDD-115 THROUGH SDD-117
- 9 CONSTRUCT STORM DRAIN CLEANOUT PER SDPWC D-09
- 10 TIE INTO EXISTING STORM DRAIN CATCH BASIN
- 11 TO BE CONSTRUCTED PER SEPARATE PROJECT
- 12 CONSTRUCT CURB AND GUTTER PER SDPWC-150
- 13 CONSTRUCT PCC SIDEWALK
- 14 CONSTRUCT DG WALKWAY
- 15 CONSTRUCT ASPHALT PAVEMENT ROADWAY SECTION
- 16 CONSTRUCT SEATWALL, HEIGHT PER PLAN
- 17 CONSTRUCT ROLLED CURB AND BOLLARD FOR ACCESS
- 18 ADJUST TO FINISH GRADE
- 19 CONSTRUCT HEADWALL PER SDPWC D-30
- 20 CONSTRUCT 6" PVC SEWER LATERAL
- 21 CONSTRUCT SEWER LATERAL CLEANOUT PER SDS-103
- 22 CONNECT TO EXISTING 24" SEWER MAIN
- 23 TIE IN TO EXISTING CULVERT
- 26 CONSTRUCT WATER SERVICE LATERAL

LEGEND

- PCC SIDEWALK
- DG WALKWAY
- ASPHALT PAVEMENT
- DAYLIGHT LINE
- EXISTING WATER
- PROPOSED WATER
- EXISTING SANITARY SEWER
- PROPOSED SANITARY SEWER
- EXISTING GAS
- EXISTING ELECTRIC
- EXISTING COMMUNICATION





CONSTRUCTION NOTES

- 1 PROTECT IN PLACE
- 2 CONSTRUCT CURB RAMP PER SDPWC-130 THROUGH SDPWC-138
- 3 CONSTRUCT BIOFILTRATION BASIN
- 4 CONSTRUCT 18" RCP STORM DRAIN
- 5 TIE INTO EXISTING STORM DRAIN
- 6 CONSTRUCT BMP OVERFLOW STRUCTURE
- 7 REMOVE AND DISPOSE
- 8 CONSTRUCT CURB INLET PER SDD-115 THROUGH SDD-117
- 9 CONSTRUCT STORM DRAIN CLEANOUT PER SDPWC D-09
- 10 TIE INTO EXISTING STORM DRAIN CATCH BASIN
- 11 TO BE CONSTRUCTED PER SEPARATE PROJECT
- 12 CONSTRUCT CURB AND GUTTER PER SDPWC-150
- 13 CONSTRUCT PCC SIDEWALK
- 14 CONSTRUCT DG WALKWAY
- 15 CONSTRUCT ASPHALT PAVEMENT ROADWAY SECTION
- 16 CONSTRUCT SEATWALL, HEIGHT PER PLAN
- 17 CONSTRUCT ROLLED CURB AND BOLLARD FOR ACCESS
- 18 ADJUST TO FINISH GRADE
- 19 CONSTRUCT HEADWALL PER SDPWC D-30
- 20 CONSTRUCT 6" PVC SEWER LATERAL
- 21 CONSTRUCT SEWER LATERAL CLEANOUT PER SDS-103
- 22 CONNECT TO EXISTING 24" SEWER MAIN
- 24 CONNECT TO EXISTING WATER MAIN
- 25 INSTALL WATER METER AND BACKFLOW PREVENTER
- 26 CONSTRUCT WATER SERVICE LATERAL
- 27 CONNECT WATER SERVICE LATERAL TO COMFORT STATION

LEGEND

- PCC SIDEWALK
- DG WALKWAY
- ASPHALT PAVEMENT
- DAYLIGHT LINE
- EXISTING WATER
- PROPOSED WATER
- EXISTING SANITARY SEWER
- PROPOSED SANITARY SEWER
- EXISTING GAS
- EXISTING ELECTRIC
- EXISTING COMMUNICATION

COUNCIL DISTRICT: 9

DATE	ACTION	REFERENCE DOCUMENTS		
	SITE ACQUIRED	RESO. NO.	COST \$:	ACRES:
	SITE DEDICATED	ORD. NO.		ACRES:
	GDP CONSULTANT HIRED	RESO. NO.	NAME:	
	P&R BOARD APPROVAL	PF&R APPROVAL		
	INITIAL DEVELOPMENT	CIP NO.	J.O. NO.	DRWG. NO.
		CIP NO.	J.O. NO.	DRWG. NO.
		CIP NO.	J.O. NO.	DRWG. NO.
		CIP NO.	J.O. NO.	DRWG. NO.
		CIP NO.	J.O. NO.	DRWG. NO.
		CIP NO.	J.O. NO.	DRWG. NO.
		CIP NO.	J.O. NO.	DRWG. NO.

IMPROVEMENTS SUMMARY (DATA FROM AS-BUILT DRAWINGS)					
ITEM	QUANTITY	ITEM	QUANTITY	ITEM	QUANTITY
TOTAL SITE	9.7 AC	AMPHITHEATER	3,290 SF	CONCRETE WALKWAYS	60,590 SF
IMPROVED AREA	9.7 AC	NATURE EXPLORATION	3,235 SF	D.G. PAVING	51,165 SF
TURF	1.75 AC	PLAY AREA 2-5, 5-12	8,383 SF	SPORTS SURFACING	12,575 SF
UNDERSTORY PLANTING	1.87 AC	BIKE RACK	6	RUBBERIZED SURFACE	10,963 SF
BUFFER PLANTING	.97 AC	BASKETBALL COURT	7,175 SF	ACCESSIBLE CURB RAMP	138 SF
VEGETATIVE BASIN	22,172 SF	PICKLEBALL COURT	5,400 SF	CONCRETE MOW CURB	642 LF
MULCH AREA	1,420 SF	FITNESS EQUIPMENT	11 PCS	C.I.P. CONCRETE WALL	245 LF
FIBAR	3,235 SF	SWING SET W/ 4 SWINGS	1	PET WASTE STATION	2
TREES	210	PREFAB RESTROOM	132 SF	PERIMETER FENCING	1,884 LF
DOG PARK	10,080 SF	SHADE CANOPY STRUCTURE	5,603 SF	BOULDERS 3X3, 4X4, 5X5	301
GARDEN BEDS 5' X 20'	20	COBBLE	921 SF	SEATING BOULDERS	8
				REVISION	

CITY OF SAN DIEGO PARK AND RECREATION DEPARTMENT

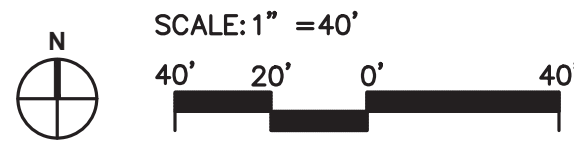
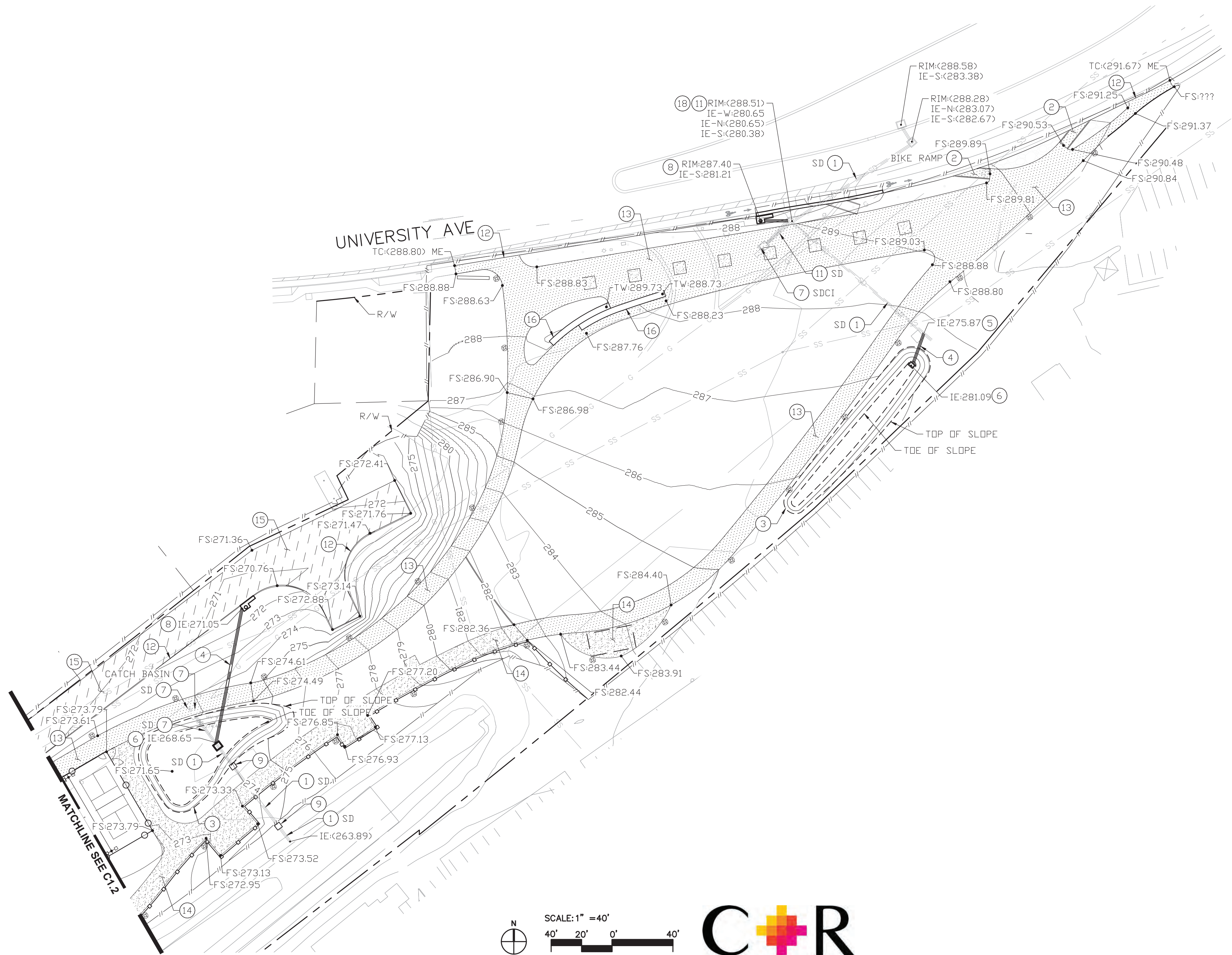
THE GENERAL DEVELOPMENT PLAN

CHOLLAS TRIANGLE PARK

LAMBERT COORDINATES: 212-1746

THOMAS BROTHERS PAGE: 1270, GRID B5 & B6





CONSTRUCTION NOTES

- 1 PROTECT IN PLACE
- 2 CONSTRUCT CURB RAMP PER SDPWC-130 THROUGH SDPWC-138
- 3 CONSTRUCT BIOFILTRATION BASIN
- 4 CONSTRUCT 18" RCP STORM DRAIN
- 5 TIE INTO EXISTING STORM DRAIN
- 6 CONSTRUCT BMP OVERFLOW STRUCTURE
- 7 REMOVE AND DISPOSE
- 8 CONSTRUCT CURB INLET PER SDD-115 THROUGH SDD-117
- 9 CONSTRUCT STORM DRAIN CLEANOUT PER SDPWC D-09
- 10 TIE INTO EXISTING STORM DRAIN CATCH BASIN
- 11 TO BE CONSTRUCTED PER SEPARATE PROJECT
- 12 CONSTRUCT CURB AND GUTTER PER SDPWC-150
- 13 CONSTRUCT PCC SIDEWALK
- 14 CONSTRUCT DG WALKWAY
- 15 CONSTRUCT ASPHALT PAVEMENT ROADWAY SECTION
- 16 CONSTRUCT SEATWALL, HEIGHT PER PLAN
- 17 CONSTRUCT ROLLED CURB AND BOLLARD FOR ACCESS
- 18 ADJUST TO FINISH GRADE
- 19 CONSTRUCT HEADWALL PER SDPWC D-30
- 20 CONSTRUCT 6" PVC SEWER LATERAL
- 21 CONSTRUCT SEWER LATERAL CLEANOUT PER SDS-103
- 22 CONNECT TO EXISTING 24" SEWER MAIN

LEGEND

- PCC SIDEWALK
- DG WALKWAY
- ASPHALT PAVEMENT
- DAYLIGHT LINE
- EXISTING WATER
- PROPOSED WATER
- EXISTING SANITARY SEWER
- PROPOSED SANITARY SEWER
- EXISTING GAS
- EXISTING ELECTRIC
- EXISTING COMMUNICATION

COUNCIL DISTRICT: 9				
DATE	ACTION	REFERENCE DOCUMENTS		
	SITE ACQUIRED	RESO. NO.	COST \$:	ACRES:
	SITE DEDICATED	ORD. NO.		ACRES:
	GDP CONSULTANT HIRED	RESO. NO.	NAME:	
	P&R BOARD APPROVAL	PF&R APPROVAL		
	INITIAL DEVELOPMENT	CIP NO.	J.O. NO.	DRWG. NO.
		CIP NO.	J.O. NO.	DRWG. NO.
		CIP NO.	J.O. NO.	DRWG. NO.
		CIP NO.	J.O. NO.	DRWG. NO.
		CIP NO.	J.O. NO.	DRWG. NO.
		CIP NO.	J.O. NO.	DRWG. NO.
		CIP NO.	J.O. NO.	DRWG. NO.

IMPROVEMENTS SUMMARY (DATA FROM AS-BUILT DRAWINGS)					
ITEM	QUANTITY	ITEM	QUANTITY	ITEM	QUANTITY
TOTAL SITE	9.7 AC	AMPHITHEATER	3,290 SF	CONCRETE WALKWAYS	60,590 SF
IMPROVED AREA	9.7 AC	NATURE EXPLORATION	3,235 SF	D.G. PAVING	51,165 SF
TURF	1.75 AC	PLAY AREA 2-5, 5-12	8,383 SF	SPORTS SURFACING	12,575 SF
UNDERSTORY PLANTING	1.87 AC	BIKE RACK	6	RUBBERIZED SURFACE	10,963 SF
BUFFER PLANTING	.97 AC	BASKETBALL COURT	7,175 SF	ACCESSIBLE CURB RAMP	138 SF
VEGETATIVE BASIN	22,172 SF	PICKLEBALL COURT	5,400 SF	CONCRETE MOW CURB	642 LF
MULCH AREA	1,420 SF	FITNESS EQUIPMENT	11 PCS	C.I.P. CONCRETE WALL	245 LF
FIBAR	3,235 SF	SWING SET W/ 4 SWINGS	1	PET WASTE STATION	2
TREES	210	PREFAB RESTROOM	132 SF	PERIMETER FENCING	1,884 LF
DOG PARK	10,080 SF	SHADE CANOPY STRUCTURE	5,603 SF	BOULDERS 3X3, 4X4, 5X5	301
GARDEN BEDS 5' X 20'	20	COBBLE	921 SF	SEATING BOULDERS	8
				REVISION	

CITY OF SAN DIEGO PARK AND RECREATION DEPARTMENT

THE GENERAL DEVELOPMENT PLAN

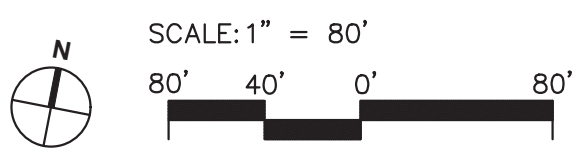
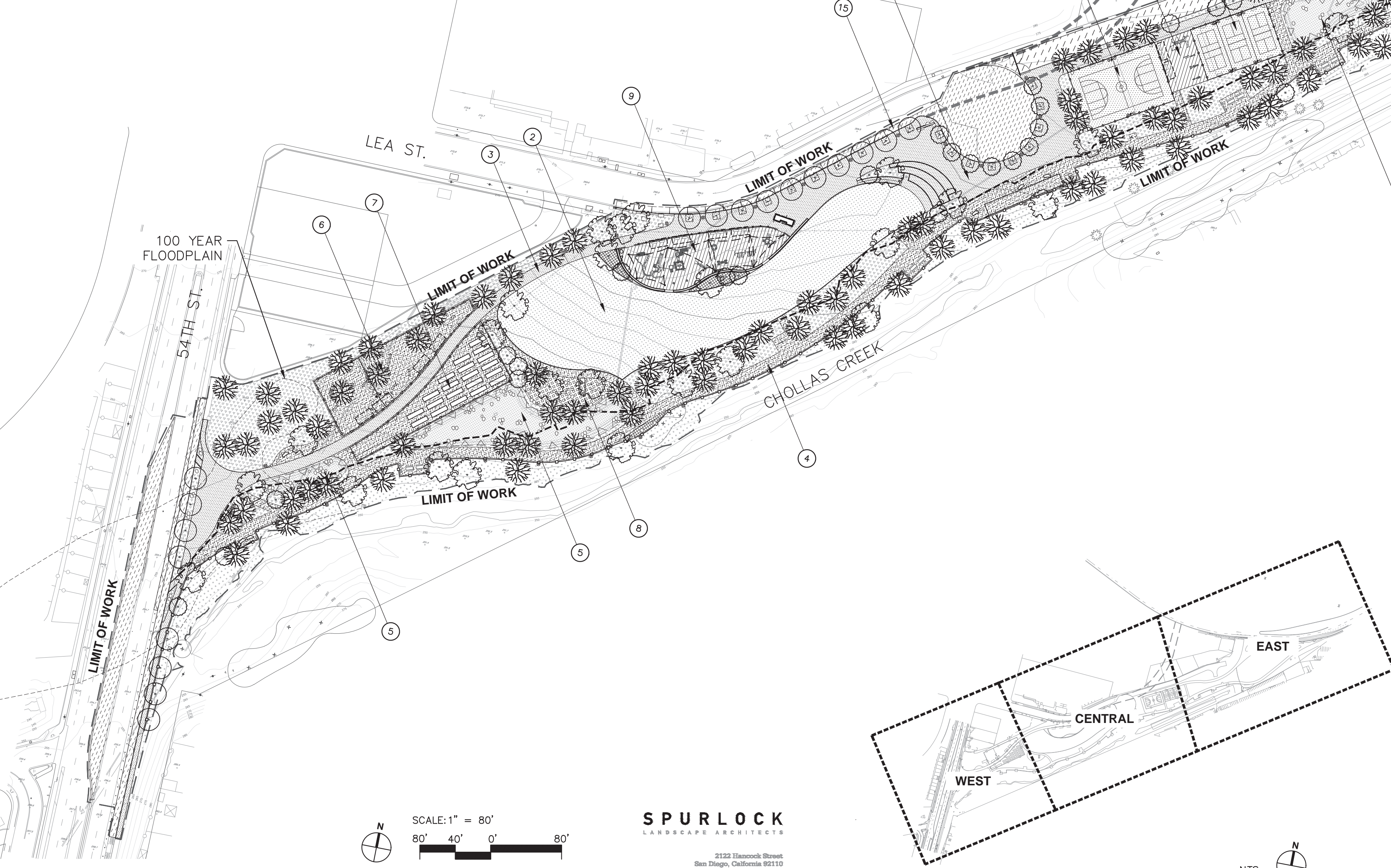
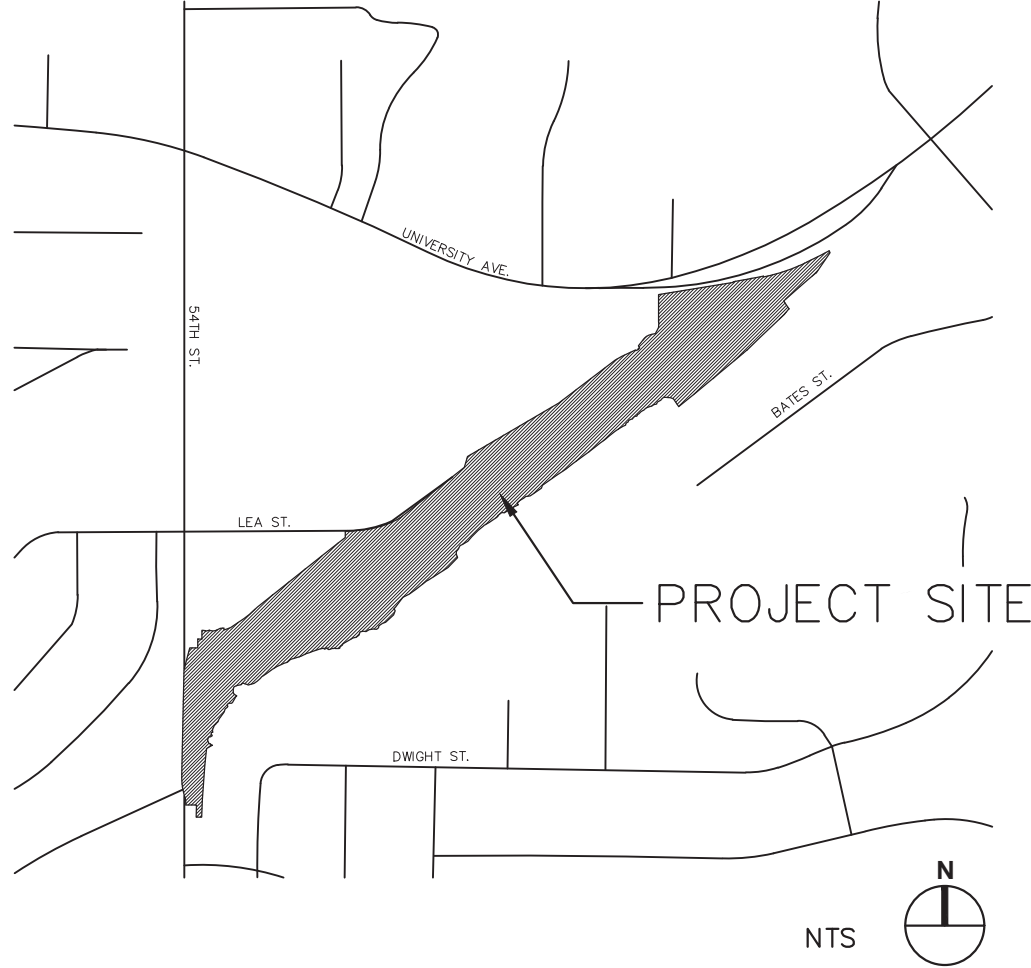
CHOLLAS TRIANGLE PARK

LAMBERT COORDINATES: 212-1746

THOMAS BROTHERS PAGE: 1270, GRID B5 & B6



VICINITY MAP



**SPURLOCK**  
LANDSCAPE ARCHITECTS  
3122 Hancock Street  
San Diego, California 92110  
619.681.0090  
spurlock-land.com

COUNCIL DISTRICT: 9

DATE	ACTION	REFERENCE DOCUMENTS		
	SITE ACQUIRED	RESO. NO.	COST \$:	ACRES:
	SITE DEDICATED	ORD. NO.		ACRES:
	GDP CONSULTANT HIRED	RESO. NO.	NAME:	
	P&R BOARD APPROVAL	PF&R APPROVAL	DATE: 11/17/21	
	INITIAL DEVELOPMENT	CIP NO.	J.O. NO.	DRWG. NO.
		CIP NO.	J.O. NO.	DRWG. NO.
		CIP NO.	J.O. NO.	DRWG. NO.
		CIP NO.	J.O. NO.	DRWG. NO.
		CIP NO.	J.O. NO.	DRWG. NO.
		CIP NO.	J.O. NO.	DRWG. NO.
		CIP NO.	J.O. NO.	DRWG. NO.

IMPROVEMENTS SUMMARY (DATA FROM AS-BUILT DRAWINGS)					
ITEM	QUANTITY	ITEM	QUANTITY	ITEM	QUANTITY
TOTAL SITE	9.7 AC	AMPHITHEATER	3,290 SF	CONCRETE WALKWAYS	60,590 SF
IMPROVED AREA	9.7 AC	NATURE EXPLORATION	3,235 SF	D.G. PAVING	51,165 SF
TURF	1.75 AC	PLAY AREA 2-5, 5-12	8,383 SF	SPORTS SURFACING	12,575 SF
UNDERSTORY PLANTING	1.87 AC	BIKE RACK	6	RUBBERIZED SURFACE	10,963 SF
BUFFER PLANTING	.97 AC	BASKETBALL COURT	7,175 SF	ACCESSIBLE CURB RAMP	138 SF
VEGETATIVE BASIN	22,172 SF	PICKLEBALL COURT	5,400 SF	CONCRETE MOW CURB	642 LF
MULCH AREA	1,420 SF	FITNESS EQUIPMENT	11 PCS	C.I.P. CONCRETE WALL	245 LF
FIBAR	3,235 SF	SWING SET W/ 4 SWINGS	1	PET WASTE STATION	2
TREES	210	PREFAB RESTROOM	132 SF	PERIMETER FENCING	1,884 LF
DOG PARK	10,080 SF	SHADE CANOPY STRUCTURE	5,603 SF	BOULDERS 3X3, 4X4, 5X5	301
GARDEN BEDS 5' X 20'	20	COBBLE	921 SF	SEATING BOULDERS	8
				REVISION	

IMPROVEMENTS LEGEND

- 1 EVENT PLAZA
  - 2 MULTI-PURPOSE LAWN
  - 3 12' CONCRETE PERIMETER PATH
  - 4 12' DECOMPOSED GRANITE MULTI-PURPOSE PATH
  - 5 VEGETATIVE STORMWATER BASIN WITH COBBLE AND BOULDERS
  - 6 OFF LEASH DOG AREA FOR LARGE AND SMALL DOGS WITH 4'H PERIMETER FENCE
  - 7 COMMUNITY GARDEN WITH 6'H PERIMETER FENCE
  - 8 NATURE EXPLORATION AREA WITH LOGS, BOULDERS, STUMPS, INTERPRETIVE SIGNAGE AND FIBAR PLAY SURFACING
  - 9 PLAY AREA WITH P.I.P. RUBBERIZED PLAY SURFACING
  - 10 BASKETBALL COURT WITH 10'H PERIMETER FENCE
  - 11 PICKLEBALL COURT WITH 6'H PERIMETER FENCE
  - 12 FITNESS EQUIPMENT AREA WITH P.I.P. RUBBERIZED SURFACING
  - 13 TEMPORARY ACCESS ROAD
  - 14 FUTURE LEA ST. EXTENSION  
(THE EXTENSION OF LEA STREET IS SHOWN FOR REFERENCE ONLY AND NOT PART OF THE GDP)
  - 15 ON-STREET PARKING, MINIMUM 14 SPACES
- RIPARIAN BUFFER
- - - LIMIT OF WORK

PLANTING LEGEND

- 40' CANOPY TREE, SUCH AS:  
QUERCUS AGRIFOLIA  
ALNUS RHOMBIFOLIA
- 25' CANOPY TREE, SUCH AS:  
PLATANUS RACEMOSA  
POPULUS FREMONTII
- STREET TREE, SUCH AS:  
LOPHOSTEMON CONFERTUS  
ULMUS PARVIFOLIA
- ACCENT TREE, SUCH AS:  
CERCIS CANADENSIS 'FORET PANSY'  
LAGERSTROEMIA INDICA  
PARKINSONIA X 'DESERT MUSEUM'  
ARBUTUS 'MARINA'
- SCREENING HEDGE  
PITTOSPORUM TENUIFOLIUM SP.  
ACACIA CULTRIFORMIS  
DODONAEA VISCOSA
- PARK UNDERSTORY, SUCH AS:  
AGAVE SP.  
DASYLIRION WHEELERI  
MUHLENBERGIA DUBIA  
HESPERALOE PARVIFLORA
- BUFFER, SUCH AS:  
SALVIA APIANA  
ERIOGONUM FASCICULATUM  
YUCCA WHIPPLEI  
BACCHARIS PILULARIS 'PIGEON POINT'
- BIOSWALE, SUCH AS:  
CAREX SPISSA  
FESTUCA RUBRA  
LEYMUS CONDENSATUS 'CANYON PRINCE'  
ACHILLEA MILLEFOLIUM  
JUNCUS PATENS
- TURF, SUCH AS:  
TURF SOD MIX SUCH AS:  
GN-1 HYBRID BERMUDA

HARDSCAPE LEGEND

- CONCRETE
- ASPHALT
- TEMPORARY ACCESS
- P.I.P. RUBBERIZED SOFT SURFACING
- SPORTS COURT SURFACING
- DECOMPOSED GRANITE
- BARK MULCH
- FIBAR
- COBBLE

CITY OF SAN DIEGO PARK AND RECREATION DEPARTMENT

THE GENERAL DEVELOPMENT PLAN

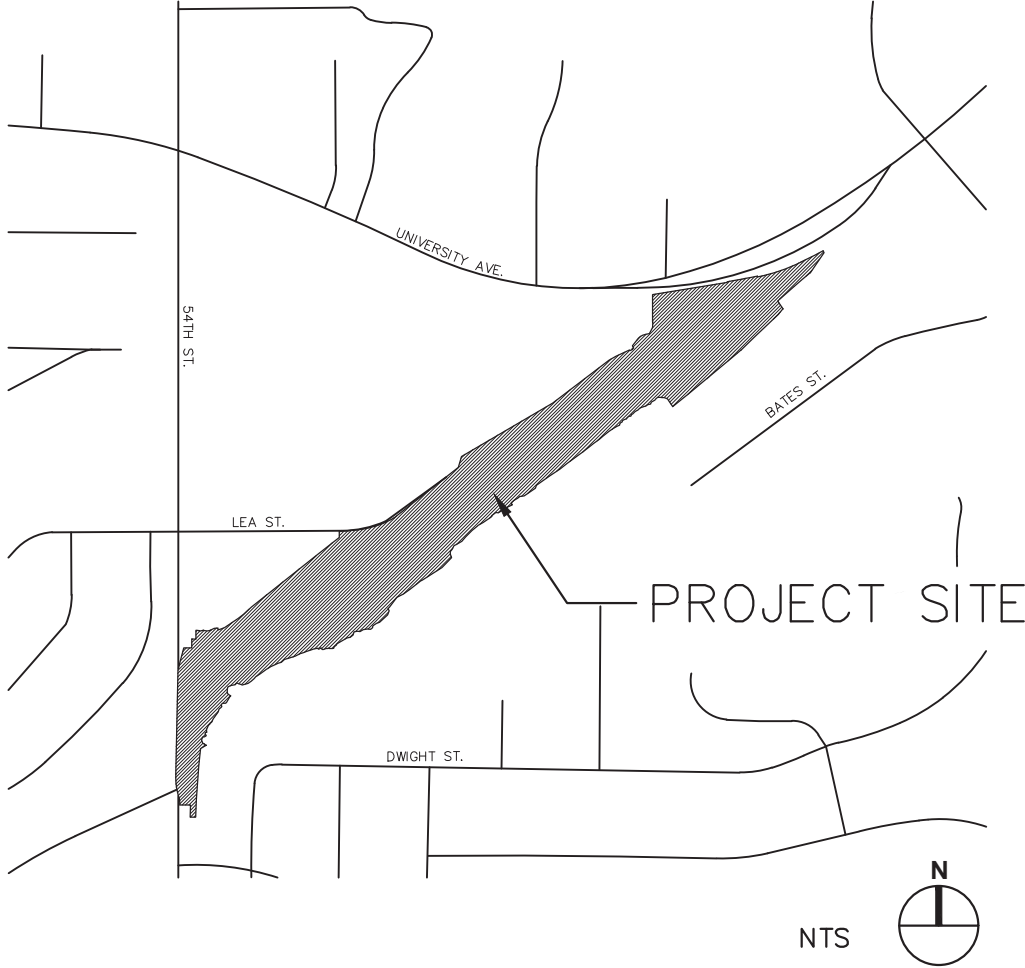
CHOLLAS TRIANGLE PARK

LAMBERT COORDINATES: 212-1746

THOMAS BROTHERS PAGE: 1270, GRID B5 & B6



VICINITY MAP



PLANTING LEGEND

- 40' CANOPY TREE, SUCH AS:**
  - QUERCUS AGRIFOLIA
  - ALNUS RHOMBIFOLIA
- 25' CANOPY TREE, SUCH AS:**
  - PLATANUS RACEMOSA
  - POPULUS FREMONTII
- STREET TREE, SUCH AS:**
  - LOPHOSTEMON CONFERTUS
  - ULMUS PARVIFOLIA
- ACCENT TREE, SUCH AS:**
  - CERCIS CANADENSIS 'FOREST PANSY'
  - LAGERSTROEMIA INDICA
  - PARKINSONIA X 'DESERT MUSEUM'
  - ARBUTUS 'MARINA'
- SCREENING HEDGE**
  - PITTOSPORUM TENUIFOLIUM SP.
  - ACACIA CULTRIFORMIS
  - DODONAEA VISCOSA
- PARK UNDERSTORY, SUCH AS:**
  - AGAVE SP.
  - DASYLIRION WHEELERI
  - MUHLENBERGIA DUBIA
  - HESPERALOE PARVIFLORA
- BUFFER, SUCH AS:**
  - SALVIA APIANA
  - ERIOGONUM FASCICULATUM
  - YUCCA WHIPPLEI
  - BACCHARIS PILULARIS 'PIGEON POINT'
- BIOSWALE, SUCH AS:**
  - CAREX SPISSA
  - FESTUCA RUBRA
  - LEYMUS CONDENSATUS 'CANYON PRINCE'
  - ACHILLEA MILLEFOLIUM
  - JUNCUS PATENS
- TURF, SUCH AS:**
  - TURF SOD MIX SUCH AS:
  - GN-1 HYBRID BERMUDA

IMPROVEMENTS LEGEND

- 1 EVENT PLAZA
  - 2 MULTI-PURPOSE LAWN
  - 3 12' CONCRETE PERIMETER PATH
  - 4 12' DECOMPOSED GRANITE MULTI-PURPOSE PATH
  - 5 VEGETATIVE STORMWATER BASIN WITH COBBLE AND BOULDERS
  - 6 OFF LEASH DOG AREA FOR LARGE AND SMALL DOGS WITH 4'H PERIMETER FENCE
  - 7 COMMUNITY GARDEN WITH 6'H PERIMETER FENCE
  - 8 NATURE EXPLORATION AREA WITH LOGS, BOULDERS, STUMPS, INTERPRETIVE SIGNAGE AND FIBAR PLAY SURFACING
  - 9 PLAY AREA WITH P.I.P. RUBBERIZED PLAY SURFACING
  - 10 BASKETBALL COURT WITH 10'H PERIMETER FENCE
  - 11 PICKLEBALL COURT WITH 6'H PERIMETER FENCE
  - 12 FITNESS EQUIPMENT AREA WITH P.I.P. RUBBERIZED SURFACING
  - 13 TEMPORARY ACCESS ROAD
  - 14 FUTURE LEA ST. EXTENSION  
(THE EXTENSION OF LEA STREET IS SHOWN FOR REFERENCE ONLY AND NOT PART OF THE GDP)
  - 15 ON-STREET PARKING, MINIMUM 14 SPACES
- RIPARIAN BUFFER
- - - LIMIT OF WORK

HARDSCAPE LEGEND

- CONCRETE
- ASPHALT
- TEMPORARY ACCESS
- P.I.P. RUBBERIZED SOFT SURFACING
- SPORTS COURT SURFACING
- DECOMPOSED GRANITE
- BARK MULCH
- FIBAR
- COBBLE

COUNCIL DISTRICT: 9

DATE	ACTION	REFERENCE DOCUMENTS			
	SITE ACQUIRED	RESO. NO.	COST \$:	ACRES:	
	SITE DEDICATED	ORD. NO.		ACRES:	
	GDP CONSULTANT HIRED	RESO. NO.	NAME:		
	P&R BOARD APPROVAL	PF&R APPROVAL	DATE: 11/17/21		
	INITIAL DEVELOPMENT	CIP NO.	J.O. NO.	DRWG. NO.	
		CIP NO.	J.O. NO.	DRWG. NO.	
		CIP NO.	J.O. NO.	DRWG. NO.	
		CIP NO.	J.O. NO.	DRWG. NO.	
		CIP NO.	J.O. NO.	DRWG. NO.	
		CIP NO.	J.O. NO.	DRWG. NO.	
		CIP NO.	J.O. NO.	DRWG. NO.	

IMPROVEMENTS SUMMARY (DATA FROM AS-BUILT DRAWINGS)					
ITEM	QUANTITY	ITEM	QUANTITY	ITEM	QUANTITY
TOTAL SITE	9.7 AC	AMPHITHEATER	3,290 SF	CONCRETE WALKWAYS	60,590 SF
IMPROVED AREA	9.7 AC	NATURE EXPLORATION	3,235 SF	D.G. PAVING	51,165 SF
TURF	1.75 AC	PLAY AREA 2-5, 5-12	8,383 SF	SPORTS SURFACING	12,575 SF
UNDERSTORY PLANTING	1.87 AC	BIKE RACK	6	RUBBERIZED SURFACE	10,963 SF
BUFFER PLANTING	.97 AC	BASKETBALL COURT	7,175 SF	ACCESSIBLE CURB RAMP	138 SF
VEGETATIVE BASIN	22,172 SF	PICKLEBALL COURT	5,400 SF	CONCRETE MOW CURB	642 LF
MULCH AREA	1,420 SF	FITNESS EQUIPMENT	11 PCS	C.I.P. CONCRETE WALL	245 LF
FIBAR	3,235 SF	SWING SET W/ 4 SWINGS	1	PET WASTE STATION	2
TREES	210	PREFAB RESTROOM	132 SF	PERIMETER FENCING	1,884 LF
DOG PARK	10,080 SF	SHADE CANOPY STRUCTURE	5,603 SF	BOULDERS 3X3, 4X4, 5X5	301
GARDEN BEDS 5' X 20'	20	COBBLE	921 SF	SEATING BOULDERS	8
				REVISION	

CITY OF SAN DIEGO PARK AND RECREATION DEPARTMENT

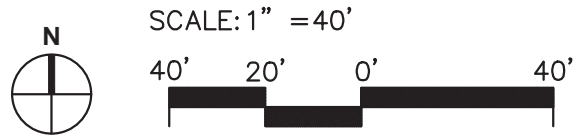
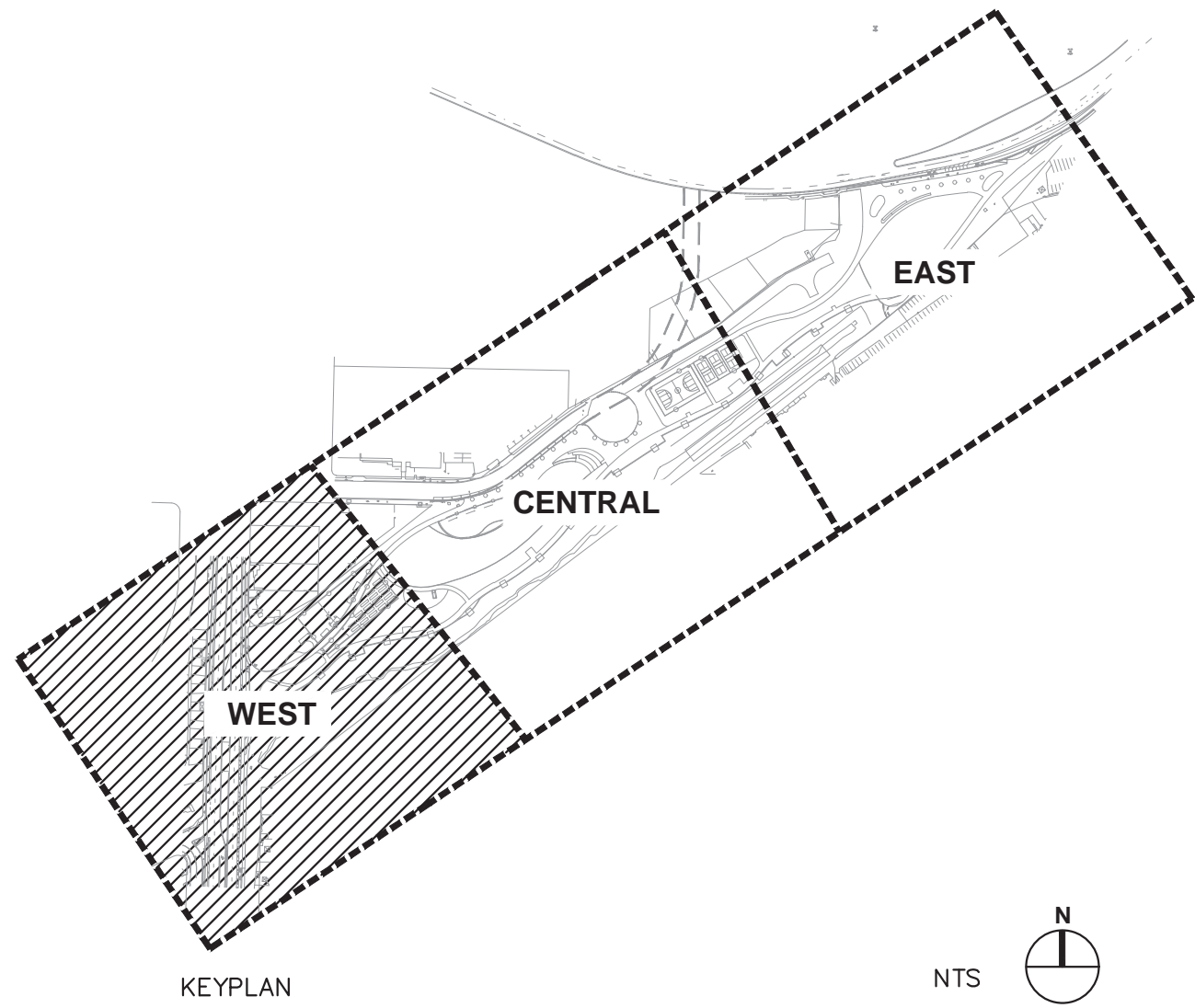
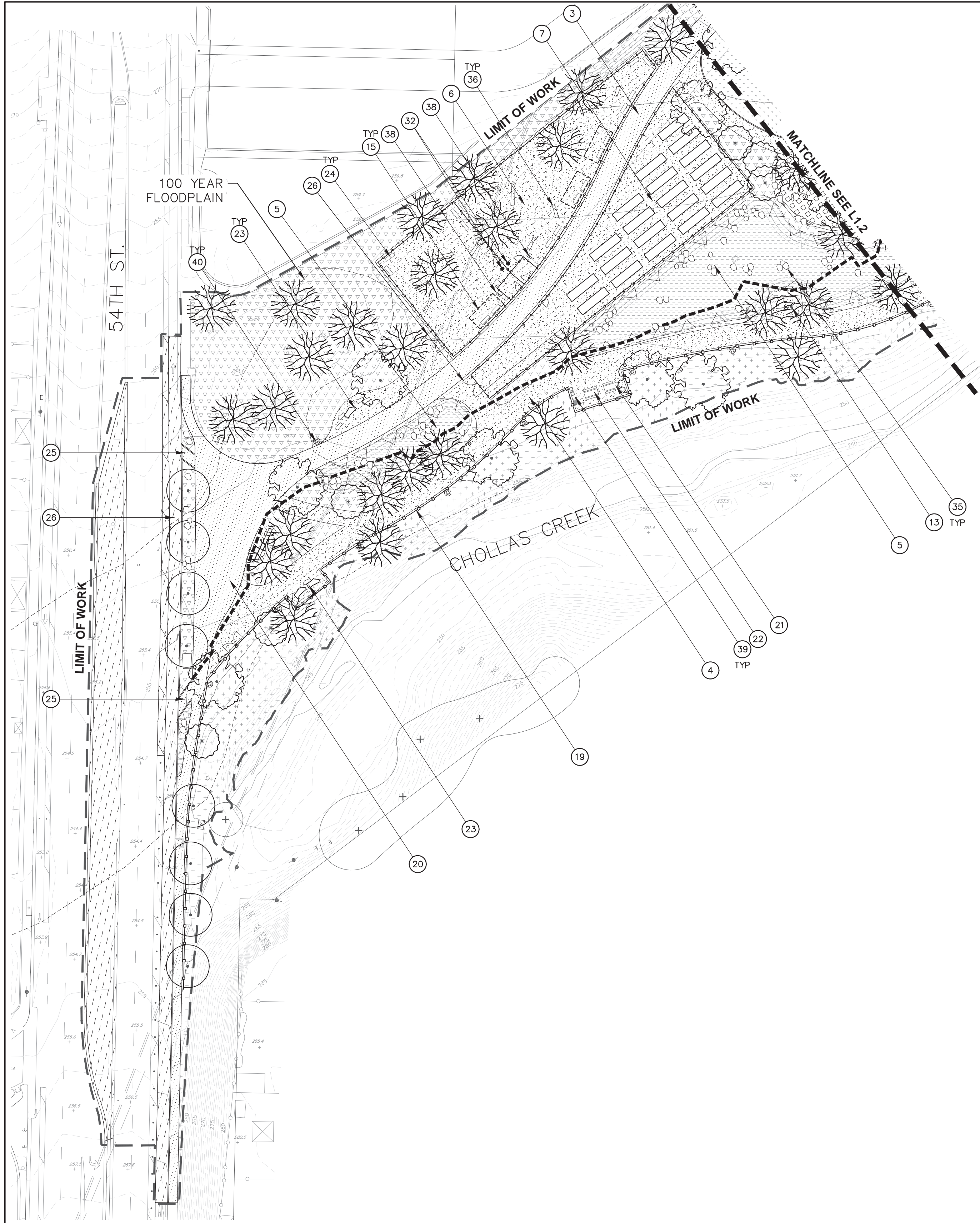
THE GENERAL DEVELOPMENT PLAN

CHOLLAS TRIANGLE PARK

LAMBERT COORDINATES: 212-1746

THOMAS BROTHERS PAGE: 1270, GRID B5 & B6





SPURLOCK  
LANDSCAPE ARCHITECTS  
2122 Hancock Street  
San Diego, California 92110  
619.691.0090  
spurlock-land.com

PLANTING LEGEND

- 40' CANOPY TREE, SUCH AS:  
QUERCUS AGRIFOLIA  
ALNUS RHOMBIFOLIA
- 25' CANOPY TREE, SUCH AS:  
PLATANUS RACEMOSA  
POPULUS FREMONTII
- STREET TREE, SUCH AS:  
LOPHOSTEMON CONFERTUS  
ULMUS PARVIFOLIA
- ACCENT TREE, SUCH AS:  
CERCIS CANADENSIS 'FOREST PANSY'  
LAGERSTROEMIA INDICA  
PARKINSONIA X 'DESERT MUSEUM'  
ARBUTUS 'MARINA'
- SCREENING HEDGE  
PITTOSPORUM TENUIFOLIUM SP.  
ACACIA CULTRIFORMIS  
DODONAEA VISCOSA
- PARK UNDERSTORY, SUCH AS:  
AGAVE SP.  
DASYLIRION WHEELERI  
MUHLENBERGIA DUBIA  
HESPERALOE PARVIFLORA  
SALVIA APIANA
- BUFFER, SUCH AS:  
SALVIA APIANA  
ERIOGONUM FASCICULATUM  
YUCCA WHIPPLEI  
BACCHARIS PILULARIS 'PIGEON POINT'
- BIOSWALE, SUCH AS:  
CAREX SPISSA  
FESTUCA RUBRA  
LEYMUS CONDENSATUS 'CANYON PRINCE'  
ACHILLEA MILLEFOLIUM  
JUNCUS PATENS
- TURF, SUCH AS:  
TURF SOD MIX SUCH AS:  
GN-1 HYBRID BERMUDA

HARDSCAPE LEGEND

- CONCRETE
- ASPHALT
- TEMPORARY ACCESS
- P.I.P. RUBBERIZED SOFT SURFACING
- SPORTS COURT SURFACING
- DECOMPOSED GRANITE
- BARK MULCH
- FIBAR
- COBBLE
- RIPARIAN BUFFER
- LIMIT OF WORK

IMPROVEMENTS LEGEND

- MULTI-PURPOSE LAWN
- AMPHITHEATER
- 12' CONCRETE PERIMETER PATH
- 12' DECOMPOSED GRANITE MULTI-PURPOSE PATH
- VEGETATIVE STORMWATER BASIN WITH COBBLE AND BOULDERS
- OFF-LEASH DOG AREA FOR LARGE AND SMALL DOGS WITH 4'H PERIMETER FENCE
- COMMUNITY GARDEN WITH 6'H PERIMETER FENCE
- NATURE EXPLORATION AREA WITH LOGS, BOULDERS, STUMPS, INTERPRETIVE SIGNAGE AND FIBAR PLAY SURFACING
- PLAY AREA WITH P.I.P. RUBBERIZED PLAY SURFACING AND SHADE SAIL STRUCTURES
- BASKETBALL COURT WITH 10'H PERIMETER FENCE
- PICKLEBALL COURT WITH 6'H PERIMETER FENCE
- FITNESS AREA WITH P.I.P. RUBBERIZED SURFACING WITH RUNNING TRACK STRIPING AND SIGNAGE
- FITNESS EQUIPMENT STATION
- PRE-FABRICATED ACCESSIBLE COMFORT STATION WITH BOTTLE FILLING STATION AND TRASH AND RECYCLING RECEPTACLES
- METAL SHADE STRUCTURE
- TEMPORARY ACCESS ROAD
- FUTURE LEA ST. EXTENSION  
(THE EXTENSION OF LEA STREET IS SHOWN FOR REFERENCE ONLY AND NOT PART OF THE GDP)
- ON-STREET PARKING, MINIMUM 14 SPACES
- SPLIT RAIL FENCE
- INTERPRETIVE SIGNAGE
- MONUMENT SIGN
- PICNIC TABLE
- BOULDER SEATING
- BENCH WITH BACK
- BIKE RAMP
- 12' WIDE VEHICULAR ACCESS GATE
- PAINTED 40YD DASH TRACK ON CONCRETE WITH RUNNING CIRCUIT SIGNAGE AROUND SPORTS COURTS
- BOULDER RETAINING WALL
- CONCRETE SEATWALL
- CONCRETE FLUSH CURB
- BBQ
- PET WASTE STATION
- BIKE RACK
- TUBE STEEL SWING GATE
- BOULDERS
- LOGS
- ACCESSIBLE DRINKING FOUNTAIN
- ACCESSIBLE DRINKING FOUNTAIN WITH DOG BOWL
- TRASH AND RECYCLING RECEPTACLES
- SITE SECURITY LIGHTING
- ROLLED CURB WITH REMOVABLE BOLLARD
- ADA RAMP

DATE	ACTION	REFERENCE DOCUMENTS		
	SITE ACQUIRED	RESO. NO.	COST \$:	ACRES:
	SITE DEDICATED	ORD. NO.		ACRES:
	GDP CONSULTANT HIRED	RESO. NO.	NAME:	
	P&R BOARD APPROVAL	PF&R APPROVAL	DATE: 11/17/21	
	INITIAL DEVELOPMENT	CIP NO.	J.O. NO.	DRWG. NO.
		CIP NO.	J.O. NO.	DRWG. NO.
		CIP NO.	J.O. NO.	DRWG. NO.
		CIP NO.	J.O. NO.	DRWG. NO.
		CIP NO.	J.O. NO.	DRWG. NO.
		CIP NO.	J.O. NO.	DRWG. NO.
		CIP NO.	J.O. NO.	DRWG. NO.

IMPROVEMENTS SUMMARY (DATA FROM AS-BUILT DRAWINGS)					
ITEM	QUANTITY	ITEM	QUANTITY	ITEM	QUANTITY
TOTAL SITE	9.7 AC	AMPHITHEATER	3,290 SF	CONCRETE WALKWAYS	60,590 SF
IMPROVED AREA	9.7 AC	NATURE EXPLORATION	3,235 SF	D.G. PAVING	51,165 SF
TURF	1.75 AC	PLAY AREA 2-5, 5-12	8,383 SF	SPORTS SURFACING	12,575 SF
UNDERSTORY PLANTING	1.87 AC	BIKE RACK	6	RUBBERIZED SURFACE	10,963 SF
BUFFER PLANTING	.97 AC	BASKETBALL COURT	7,175 SF	ACCESSIBLE CURB RAMP	138 SF
VEGETATIVE BASIN	22,172 SF	PICKLEBALL COURT	5,400 SF	CONCRETE MOW CURB	642 LF
MULCH AREA	1,420 SF	FITNESS EQUIPMENT	11 PCS	C.I.P. CONCRETE WALL	245 LF
FIBAR	3,235 SF	SWING SET W/ 4 SWINGS	1	PET WASTE STATION	2
TREES	210	PREFAB RESTROOM	132 SF	PERIMETER FENCING	1,884 LF
DOG PARK	10,080 SF	SHADE CANOPY STRUCTURE	5,603 SF	BOULDERS 3X3, 4X4, 5X5	301
GARDEN BEDS 5' X 20'	20	COBBLE	921 SF	SEATING BOULDERS	8
				REVISION	

CITY OF SAN DIEGO PARK AND RECREATION DEPARTMENT

THE GENERAL DEVELOPMENT PLAN

CHOLLAS TRIANGLE PARK

LAMBERT COORDINATES: 212-1746

THOMAS BROTHERS PAGE: 1270, GRID B5 & B6





PLANTING LEGEND

- 40' CANOPY TREE, SUCH AS:
  - QUERCUS AGRIFOLIA
  - ALNUS RHOMBIFOLIA
- 25' CANOPY TREE, SUCH AS:
  - PLATANUS RACEMOSA
  - POPULUS FREMONTII
- STREET TREE, SUCH AS:
  - LOPHOSTEMON CONFERTUS
  - ULMUS PARVIFOLIA
- ACCENT TREE, SUCH AS:
  - CERCIS CANADENSIS 'FOREST PANSY'
  - LAGERSTROEMIA INDICA
  - PARKINSONIA X 'DESERT MUSEUM'
  - ARBUTUS 'MARINA'
- SCREENING HEDGE
  - PITTOSPORUM TENUIFOLIUM SP.
  - ACACIA CULTRIFORMIS
  - DODONAEA VISCOSA
- PARK UNDERSTORY, SUCH AS:
  - AGAVE SP.
  - DASYLIRION WHEELERI
  - MUHLENBERGIA DUBIA
  - HESPERALOE PARVIFLORA
  - SALVIA APIANA
- BUFFER, SUCH AS:
  - SALVIA APIANA
  - ERIOGONUM FASCICULATUM
  - YUCCA WHIPPLEI
  - BACCHARIS PILULARIS 'PIGEON POINT'
- BIOSWALE, SUCH AS:
  - CAREX SPISSA
  - FESTUCA RUBRA
  - LEYMUS CONDENSATUS 'CANYON PRINCE'
  - ACHILLEA MILLEFOLIUM
  - JUNCUS PATENS
- TURF, SUCH AS:
  - TURF SOD MIX SUCH AS:
  - GN-1 HYBRID BERMUDA

HARDSCAPE LEGEND

- CONCRETE
- ASPHALT
- TEMPORARY ACCESS
- P.I.P. RUBBERIZED SOFT SURFACING
- SPORTS COURT SURFACING
- DECOMPOSED GRANITE
- BARK MULCH
- FIBAR
- COBBLE
- RIPARIAN BUFFER
- LIMIT OF WORK

IMPROVEMENTS LEGEND

- MULTI-PURPOSE LAWN
- AMPHITHEATER
- 12' CONCRETE PERIMETER PATH
- 12' DECOMPOSED GRANITE MULTI-PURPOSE PATH
- VEGETATIVE STORMWATER BASIN WITH COBBLE AND BOULDERS
- OFF-LEASH DOG AREA FOR LARGE AND SMALL DOGS WITH 4'H PERIMETER FENCE
- COMMUNITY GARDEN WITH 6'H PERIMETER FENCE
- NATURE EXPLORATION AREA WITH LOGS, BOULDERS, STUMPS, INTERPRETIVE SIGNAGE AND FIBAR PLAY SURFACING
- PLAY AREA WITH P.I.P. RUBBERIZED PLAY SURFACING AND SHADE SAIL STRUCTURES
- BASKETBALL COURT WITH 10'H PERIMETER FENCE
- PICKLEBALL COURT WITH 6'H PERIMETER FENCE
- FITNESS AREA WITH P.I.P. RUBBERIZED SURFACING WITH RUNNING TRACK STRIPING AND SIGNAGE
- FITNESS EQUIPMENT STATION
- PRE-FABRICATED ACCESSIBLE COMFORT STATION WITH BOTTLE FILLING STATION AND TRASH AND RECYCLING RECEPTACLES
- METAL SHADE STRUCTURE
- TEMPORARY ACCESS ROAD
- FUTURE LEA ST. EXTENSION (THE EXTENSION OF LEA STREET IS SHOWN FOR REFERENCE ONLY AND NOT PART OF THE GDP)
- ON-STREET PARKING, MINIMUM 14 SPACES
- SPLIT RAIL FENCE
- INTERPRETIVE SIGNAGE
- MONUMENT SIGN
- PICNIC TABLE
- BOULDER SEATING
- BENCH WITH BACK
- BIKE RAMP
- 12' WIDE VEHICULAR ACCESS GATE
- PAINTED 40YD DASH TRACK ON CONCRETE WITH RUNNING CIRCUIT SIGNAGE AROUND SPORTS COURTS
- BOULDER RETAINING WALL
- CONCRETE SEATWALL
- CONCRETE FLUSH CURB
- BBQ
- PET WASTE STATION
- BIKE RACK
- TUBE STEEL SWING GATE
- BOULDERS
- LOGS
- ACCESSIBLE DRINKING FOUNTAIN
- ACCESSIBLE DRINKING FOUNTAIN WITH DOG BOWL
- TRASH AND RECYCLING RECEPTACLES
- SITE SECURITY LIGHTING
- ROLLED CURB WITH REMOVABLE BOLLARD
- ADA RAMP

COUNCIL DISTRICT: 9

DATE	ACTION	REFERENCE DOCUMENTS			
	SITE ACQUIRED	RESO. NO.	COST \$:	ACRES:	
	SITE DEDICATED	ORD. NO.		ACRES:	
	GDP CONSULTANT HIRED	RESO. NO.	NAME:		
	P&R BOARD APPROVAL	PF&R APPROVAL	DATE: 11/17/21		
	INITIAL DEVELOPMENT	CIP NO.	J.O. NO.	DRWG. NO.	
		CIP NO.	J.O. NO.	DRWG. NO.	
		CIP NO.	J.O. NO.	DRWG. NO.	
		CIP NO.	J.O. NO.	DRWG. NO.	
		CIP NO.	J.O. NO.	DRWG. NO.	
		CIP NO.	J.O. NO.	DRWG. NO.	
		CIP NO.	J.O. NO.	DRWG. NO.	

IMPROVEMENTS SUMMARY (DATA FROM AS-BUILT DRAWINGS)					
ITEM	QUANTITY	ITEM	QUANTITY	ITEM	QUANTITY
TOTAL SITE	9.7 AC	AMPHITHEATER	3,290 SF	CONCRETE WALKWAYS	60,590 SF
IMPROVED AREA	9.7 AC	NATURE EXPLORATION	3,235 SF	D.G. PAVING	51,165 SF
TURF	1.75 AC	PLAY AREA 2-5, 5-12	8,383 SF	SPORTS SURFACING	12,575 SF
UNDERSTORY PLANTING	1.87 AC	BIKE RACK	6	RUBBERIZED SURFACE	10,963 SF
BUFFER PLANTING	.97 AC	BASKETBALL COURT	7,175 SF	ACCESSIBLE CURB RAMP	138 SF
VEGETATIVE BASIN	22,172 SF	PICKLEBALL COURT	5,400 SF	CONCRETE MOW CURB	642 LF
MULCH AREA	1,420 SF	FITNESS EQUIPMENT	11 PCS	C.I.P. CONCRETE WALL	245 LF
FIBAR	3,235 SF	SWING SET W/ 4 SWINGS	1	PET WASTE STATION	2
TREES	210	PREFAB RESTROOM	132 SF	PERIMETER FENCING	1,884 LF
DOG PARK	10,080 SF	SHADE CANOPY STRUCTURE	5,603 SF	BOULDERS 3X3, 4X4, 5X5	301
GARDEN BEDS 5' X 20'	20	COBBLE	921 SF	SEATING BOULDERS	8
				REVISION	

CITY OF SAN DIEGO PARK AND RECREATION DEPARTMENT

THE GENERAL DEVELOPMENT PLAN

CHOLLAS TRIANGLE PARK

LAMBERT COORDINATES: 212-1746

THOMAS BROTHERS PAGE: 1270, GRID B5 & B6





PLANTING LEGEND

- 40' CANOPY TREE, SUCH AS:**  
QUERCUS AGRIFOLIA  
ALNUS RHOMBIFOLIA
- 25' CANOPY TREE, SUCH AS:**  
PLATANUS RACEMOSA  
POPULUS FREMONTII
- STREET TREE, SUCH AS:**  
LOPHOSTEMON CONFERTUS  
ULMUS PARVIFOLIA
- ACCENT TREE, SUCH AS:**  
CERCIS CANADENSIS 'FOREST PANSY'  
LAGERSTROEMIA INDICA  
PARKINSONIA X 'DESERT MUSEUM'  
ARBUTUS 'MARINA'
- SCREENING HEDGE**  
PITTSOPORUM TENUIFOLIUM SP.  
ACACIA CULTRIFORMIS  
DODONAEA VISCOSA
- PARK UNDERSTORY, SUCH AS:**  
AGAVE SP.  
DASYLIRION WHEELERI  
MUHLENBERGIA DUBIA  
HESPERALOE PARVIFLORA  
SALVIA APIANA
- BUFFER, SUCH AS:**  
SALVIA APIANA  
ERIOGONUM FASCICULATUM  
YUCCA WHIPPLEI  
BACCHARIS PILULARIS 'PIGEON POINT'
- BIOSWALE, SUCH AS:**  
CAREX SPISSA  
FESTUCA RUBRA  
LEYMUS CONDENSATUS 'CANYON PRINCE'  
ACHILLEA MILLEFOLIUM  
JUNCUS PATENS
- TURF, SUCH AS:**  
TURF SOD MIX SUCH AS:  
GN-1 HYBRID BERMUDA

HARDSCAPE LEGEND

- CONCRETE**
- ASPHALT**
- TEMPORARY ACCESS**
- P.I.P. RUBBERIZED SOFT SURFACING**
- SPORTS COURT SURFACING**
- DECOMPOSED GRANITE**
- BARK MULCH**
- FIBAR**
- COBBLE**
- RIPARIAN BUFFER**
- LIMIT OF WORK**

IMPROVEMENTS LEGEND

- 1 MULTI-PURPOSE LAWN**
- 2 AMPHITHEATER**
- 3 12' CONCRETE PERIMETER PATH**
- 4 12' DECOMPOSED GRANITE MULTI-PURPOSE PATH**
- 5 VEGETATIVE STORMWATER BASIN WITH COBBLE AND BOULDERS**
- 6 OFF-LEASH DOG AREA FOR LARGE AND SMALL DOGS WITH 4'H PERIMETER FENCE**
- 7 COMMUNITY GARDEN WITH 6'H PERIMETER FENCE**
- 8 NATURE EXPLORATION AREA WITH LOGS, BOULDERS, STUMPS, INTERPRETIVE SIGNAGE AND FIBAR PLAY SURFACING**
- 9 PLAY AREA WITH P.I.P. RUBBERIZED PLAY SURFACING AND SHADE SAIL STRUCTURES**
- 10 BASKETBALL COURT WITH 10'H PERIMETER FENCE**
- 11 PICKLEBALL COURT WITH 6'H PERIMETER FENCE**
- 12 FITNESS AREA WITH P.I.P. RUBBERIZED SURFACING WITH RUNNING TRACK STRIPING AND SIGNAGE**
- 13 FITNESS EQUIPMENT STATION**
- 14 PRE-FABRICATED ACCESSIBLE COMFORT STATION WITH BOTTLE FILLING STATION AND TRASH AND RECYCLING RECEPTACLES**
- 15 METAL SHADE STRUCTURE**
- 16 TEMPORARY ACCESS ROAD**
- 17 FUTURE LEA ST. EXTENSION  
(THE EXTENSION OF LEA STREET IS SHOWN FOR REFERENCE ONLY AND NOT PART OF THE GDP)**
- 18 ON-STREET PARKING, MINIMUM 14 SPACES**
- 19 SPLIT RAIL FENCE**
- 20 INTERPRETIVE SIGNAGE**
- 21 MONUMENT SIGN**
- 22 PICNIC TABLE**
- 23 BOULDER SEATING**
- 24 BENCH WITH BACK**
- 25 BIKE RAMP**
- 26 12' WIDE VEHICULAR ACCESS GATE**
- 27 PAINTED 40YD DASH TRACK ON CONCRETE WITH RUNNING CIRCUIT SIGNAGE AROUND SPORTS COURTS**
- 28 BOULDER RETAINING WALL**
- 29 CONCRETE SEATWALL**
- 30 CONCRETE FLUSH CURB**
- 31 BBQ**
- 32 PET WASTE STATION**
- 33 BIKE RACK**
- 34 TUBE STEEL SWING GATE**
- 35 BOULDERS**
- 36 LOGS**
- 37 ACCESSIBLE DRINKING FOUNTAIN**
- 38 ACCESSIBLE DRINKING FOUNTAIN WITH DOG BOWL**
- 39 TRASH AND RECYCLING RECEPTACLES**
- 40 SITE SECURITY LIGHTING**
- 41 ROLLED CURB WITH REMOVABLE BOLLARD**
- 42 ADA RAMP**

COUNCIL DISTRICT: 9

DATE	ACTION	REFERENCE DOCUMENTS			
	SITE ACQUIRED	RESO. NO.	COST \$:	ACRES:	
	SITE DEDICATED	ORD. NO.		ACRES:	
	GDP CONSULTANT HIRED	RESO. NO.	NAME:		
	P&R BOARD APPROVAL	PF&R APPROVAL	DATE: 11/17/21		
	INITIAL DEVELOPMENT	CIP NO.	J.O. NO.	DRWG. NO.	
		CIP NO.	J.O. NO.	DRWG. NO.	
		CIP NO.	J.O. NO.	DRWG. NO.	
		CIP NO.	J.O. NO.	DRWG. NO.	
		CIP NO.	J.O. NO.	DRWG. NO.	
		CIP NO.	J.O. NO.	DRWG. NO.	
		CIP NO.	J.O. NO.	DRWG. NO.	

IMPROVEMENTS SUMMARY (DATA FROM AS-BUILT DRAWINGS)					
ITEM	QUANTITY	ITEM	QUANTITY	ITEM	QUANTITY
TOTAL SITE	9.7 AC	AMPHITHEATER	3,290 SF	CONCRETE WALKWAYS	60,590 SF
IMPROVED AREA	9.7 AC	NATURE EXPLORATION	3,235 SF	D.G. PAVING	51,165 SF
TURF	1.75 AC	PLAY AREA 2-5, 5-12	8,383 SF	SPORTS SURFACING	12,575 SF
UNDERSTORY PLANTING	1.87 AC	BIKE RACK	6	RUBBERIZED SURFACE	10,963 SF
BUFFER PLANTING	.97 AC	BASKETBALL COURT	7,175 SF	ACCESSIBLE CURB RAMP	138 SF
VEGETATIVE BASIN	22,172 SF	PICKLEBALL COURT	5,400 SF	CONCRETE MOW CURB	642 LF
MULCH AREA	1,420 SF	FITNESS EQUIPMENT	11 PCS	C.I.P. CONCRETE WALL	245 LF
FIBAR	3,235 SF	SWING SET W/ 4 SWINGS	1	PET WASTE STATION	2
TREES	210	PREFAB RESTROOM	132 SF	PERIMETER FENCING	1,884 LF
DOG PARK	10,080 SF	SHADE CANOPY STRUCTURE	5,603 SF	BOULDERS 3X3, 4X4, 5X5	301
GARDEN BEDS 5' X 20'	20	COBBLE	921 SF	SEATING BOULDERS	8

CITY OF SAN DIEGO PARK AND RECREATION DEPARTMENT

THE GENERAL DEVELOPMENT PLAN

CHOLLAS TRIANGLE PARK

LAMBERT COORDINATES: 212-1746      THOMAS BROTHERS PAGE: 1270, GRID B5 & B6





PLANTING LEGEND

- 40' CANOPY TREE, SUCH AS:  
QUERCUS AGRIFOLIA  
ALNUS RHOMBIFOLIA
- 25' CANOPY TREE, SUCH AS:  
PLATANUS RACEMOSA  
POPULUS FREMONTII
- STREET TREE, SUCH AS:  
LOPHOSTEMON CONFERTUS  
ULMUS PARVIFOLIA
- ACCENT TREE, SUCH AS:  
CERCIS CANADENSIS 'FOREST PANSY'  
LAGERSTROEMIA INDICA  
PARKINSONIA X 'DESERT MUSEUM'  
ARBUTUS 'MARINA'
- SCREENING HEDGE  
PITTSOPORUM TENUIFOLIUM SP.  
ACACIA CULTRIFORMIS  
DODONAEA VISCOSA
- PARK UNDERSTORY, SUCH AS:  
AGAVE SP.  
DASYLIRION WHEELERI  
MUHLENBERGIA DUBIA  
HESPERALOE PARVIFLORA  
SALVIA APIANA
- BUFFER, SUCH AS:  
SALVIA APIANA  
ERIOGONUM FASCICULATUM  
YUCCA WHIPPLEI  
BACCHARIS PILULARIS 'PIGEON POINT'
- BIOSWALE, SUCH AS:  
CAREX SPISSA  
FESTUCA RUBRA  
LEYMUS CONDENSATUS 'CANYON PRINCE'  
ACHILLEA MILLEFOLIUM  
JUNCUS PATENS
- TURF, SUCH AS:  
TURF SOD MIX SUCH AS:  
GN-1 HYBRID BERMUDA

HARDSCAPE LEGEND

- CONCRETE
- ASPHALT
- TEMPORARY ACCESS
- P.I.P. RUBBERIZED SOFT SURFACING
- SPORTS COURT SURFACING
- DECOMPOSED GRANITE
- BARK MULCH
- FIBAR
- COBBLE
- RIPARIAN BUFFER
- LIMIT OF WORK

IMPROVEMENTS LEGEND

- MULTI-PURPOSE LAWN
- AMPHITHEATER
- 12' CONCRETE PERIMETER PATH
- 12' DECOMPOSED GRANITE MULTI-PURPOSE PATH
- VEGETATIVE STORMWATER BASIN WITH COBBLE AND BOULDERS
- OFF-LEASH DOG AREA FOR LARGE AND SMALL DOGS WITH 4'H PERIMETER FENCE
- COMMUNITY GARDEN WITH 6'H PERIMETER FENCE
- NATURE EXPLORATION AREA WITH LOGS, BOULDERS, STUMPS, INTERPRETIVE SIGNAGE AND FIBAR PLAY SURFACING
- PLAY AREA WITH P.I.P. RUBBERIZED PLAY SURFACING AND SHADE SAIL STRUCTURES
- BASKETBALL COURT WITH 10'H PERIMETER FENCE
- PICKLEBALL COURT WITH 6'H PERIMETER FENCE
- FITNESS AREA WITH P.I.P. RUBBERIZED SURFACING WITH RUNNING TRACK STRIPING AND SIGNAGE
- FITNESS EQUIPMENT STATION
- PRE-FABRICATED ACCESSIBLE COMFORT STATION WITH BOTTLE FILLING STATION AND TRASH AND RECYCLING RECEPTACLES
- METAL SHADE STRUCTURE
- TEMPORARY ACCESS ROAD
- FUTURE LEA ST. EXTENSION  
(THE EXTENSION OF LEA STREET IS SHOWN FOR REFERENCE ONLY AND NOT PART OF THE GDP)
- ON-STREET PARKING, MINIMUM 14 SPACES
- SPLIT RAIL FENCE
- INTERPRETIVE SIGNAGE
- MONUMENT SIGN
- PICNIC TABLE
- BOULDER SEATING
- BENCH WITH BACK
- BIKE RAMP
- 12' WIDE VEHICULAR ACCESS GATE
- PAINTED 40YD DASH TRACK ON CONCRETE WITH RUNNING CIRCUIT SIGNAGE AROUND SPORTS COURTS
- BOULDER RETAINING WALL
- CONCRETE SEATWALL
- CONCRETE FLUSH CURB
- BBQ
- PET WASTE STATION
- BIKE RACK
- TUBE STEEL SWING GATE
- BOULDERS
- LOGS
- ACCESSIBLE DRINKING FOUNTAIN
- ACCESSIBLE DRINKING FOUNTAIN WITH DOG BOWL
- TRASH AND RECYCLING RECEPTACLES
- SITE SECURITY LIGHTING
- ROLLED CURB WITH REMOVABLE BOLLARD
- ADA RAMP

COUNCIL DISTRICT: 9

DATE	ACTION	REFERENCE DOCUMENTS		
	SITE ACQUIRED	RESO. NO.	COST \$:	ACRES:
	SITE DEDICATED	ORD. NO.		ACRES:
	GDP CONSULTANT HIRED	RESO. NO.	NAME:	
	P&R BOARD APPROVAL	PF&R APPROVAL	DATE: 11/17/21	
	INITIAL DEVELOPMENT	CIP NO.	J.O. NO.	DRWG. NO.
		CIP NO.	J.O. NO.	DRWG. NO.
		CIP NO.	J.O. NO.	DRWG. NO.
		CIP NO.	J.O. NO.	DRWG. NO.
		CIP NO.	J.O. NO.	DRWG. NO.
		CIP NO.	J.O. NO.	DRWG. NO.
		CIP NO.	J.O. NO.	DRWG. NO.

IMPROVEMENTS SUMMARY (DATA FROM AS-BUILT DRAWINGS)					
ITEM	QUANTITY	ITEM	QUANTITY	ITEM	QUANTITY
TOTAL SITE	9.7 AC	AMPHITHEATER	3,290 SF	CONCRETE WALKWAYS	60,590 SF
IMPROVED AREA	9.7 AC	NATURE EXPLORATION	3,235 SF	D.G. PAVING	51,165 SF
TURF	1.75 AC	PLAY AREA 2-5, 5-12	8,383 SF	SPORTS SURFACING	12,575 SF
UNDERSTORY PLANTING	1.87 AC	BIKE RACK	6	RUBBERIZED SURFACE	10,963 SF
BUFFER PLANTING	.97 AC	BASKETBALL COURT	7,175 SF	ACCESSIBLE CURB RAMP	138 SF
VEGETATIVE BASIN	22,172 SF	PICKLEBALL COURT	5,400 SF	CONCRETE MOW CURB	642 LF
MULCH AREA	1,420 SF	FITNESS EQUIPMENT	11 PCS	C.I.P. CONCRETE WALL	245 LF
FIBAR	3,235 SF	SWING SET W/ 4 SWINGS	1	PET WASTE STATION	2
TREES	210	PREFAB RESTROOM	132 SF	PERIMETER FENCING	1,884 LF
DOG PARK	10,080 SF	SHADE CANOPY STRUCTURE	5,603 SF	BOULDERS 3X3, 4X4, 5X5	301
GARDEN BEDS 5' X 20'	20	COBBLE	921 SF	SEATING BOULDERS	8
				REVISION	

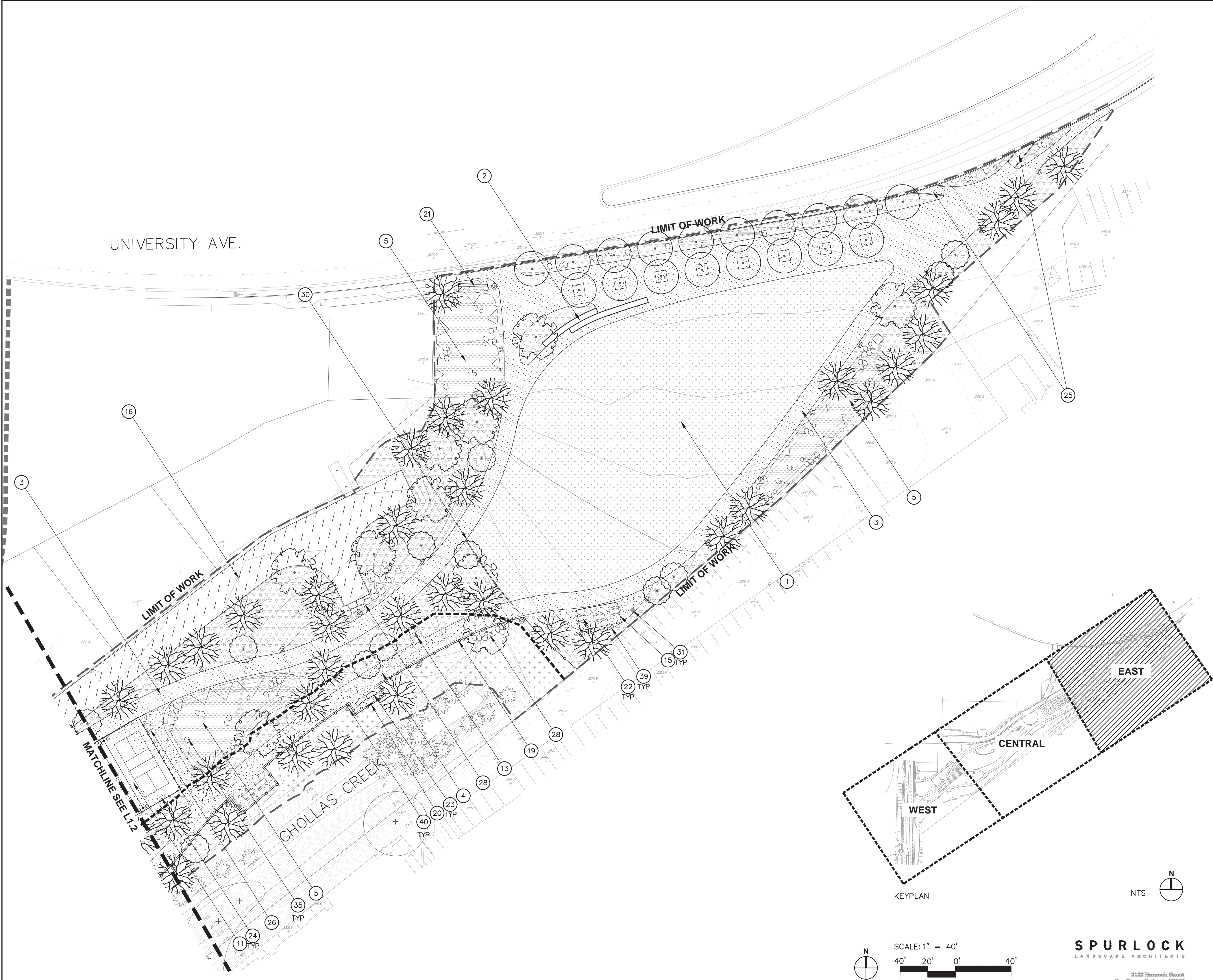
CITY OF SAN DIEGO PARK AND RECREATION DEPARTMENT

THE GENERAL DEVELOPMENT PLAN

CHOLLAS TRIANGLE PARK

LAMBERT COORDINATES: 212-1746      THOMAS BROTHERS PAGE: 1270, GRID B5 & B6





PLANTING LEGEND

- 40' CANOPY TREE, SUCH AS:
  - QUERCUS AGRIFOLIA
  - ALNUS RHOMBIFOLIA
- 25' CANOPY TREE, SUCH AS:
  - PLATANUS RACEMOSA
  - POPULUS FREMONTII
- STREET TREE, SUCH AS:
  - LOPHOSTEMON CONFERTUS
  - ULMUS PARVIFOLIA
- ACCENT TREE, SUCH AS:
  - CERCIS CANADENSIS 'FOREST PANSY'
  - LAGERSTROEMIA INDICA
  - PARKINSONIA X 'DESERT MUSEUM'
  - ARBUTUS 'MARINA'
- SCREENING HEDGE
  - PITTOSPORUM TENUIFOLIUM SP.
  - ACACIA CULTRIFORMIS
  - DODONAEA VISCOSA
- PARK UNDERSTORY, SUCH AS:
  - AGAVE SP.
  - DASYLIRION WHEELERI
  - MUHLENBERGIA DUBIA
  - HESPERALOE PARVIFLORA
  - SALVIA APIANA
- BUFFER, SUCH AS:
  - SALVIA APIANA
  - ERIOGONUM FASCICULATUM
  - YUCCA WHIPPLEI
  - BACCHARIS PILULARIS 'PIGEON POINT'
- BIOSWALE, SUCH AS:
  - CAREX SPISSA
  - FESTUCA RUBRA
  - LEYMUS CONDENSATUS 'CANYON PRINCE'
  - ACHILLEA MILLEFOLIUM
  - JUNCUS PATENS
- TURF, SUCH AS:
  - TURF SOD MIX SUCH AS:
  - GN-1 HYBRID BERMUDA

HARDSCAPE LEGEND

- CONCRETE
- ASPHALT
- TEMPORARY ACCESS
- P.I.P. RUBBERIZED SOFT SURFACING
- SPORTS COURT SURFACING
- DECOMPOSED GRANITE
- BARK MULCH
- FIBAR
- COBBLE
- RIPARIAN BUFFER
- LIMIT OF WORK

IMPROVEMENTS LEGEND

- MULTI-PURPOSE LAWN
- AMPHITHEATER
- 12' CONCRETE PERIMETER PATH
- 12' DECOMPOSED GRANITE MULTI-PURPOSE PATH
- VEGETATIVE STORMWATER BASIN WITH COBBLE AND BOULDERS
- OFF-LEASH DOG AREA FOR LARGE AND SMALL DOGS WITH 4'H PERIMETER FENCE
- COMMUNITY GARDEN WITH 6'H PERIMETER FENCE
- NATURE EXPLORATION AREA WITH LOGS, BOULDERS, STUMPS, INTERPRETIVE SIGNAGE AND FIBAR PLAY SURFACING
- PLAY AREA WITH P.I.P. RUBBERIZED PLAY SURFACING AND SHADE SAIL STRUCTURES
- BASKETBALL COURT WITH 10'H PERIMETER FENCE
- PICKLEBALL COURT WITH 6'H PERIMETER FENCE
- FITNESS AREA WITH P.I.P. RUBBERIZED SURFACING WITH RUNNING TRACK STRIPING AND SIGNAGE
- FITNESS EQUIPMENT STATION
- PRE-FABRICATED ACCESSIBLE COMFORT STATION WITH BOTTLE FILLING STATION AND TRASH AND RECYCLING RECEPTACLES
- METAL SHADE STRUCTURE
- TEMPORARY ACCESS ROAD
- FUTURE LEA ST. EXTENSION (THE EXTENSION OF LEA STREET IS SHOWN FOR REFERENCE ONLY AND NOT PART OF THE GDP)
- ON-STREET PARKING, MINIMUM 14 SPACES
- SPLIT RAIL FENCE
- INTERPRETIVE SIGNAGE
- MONUMENT SIGN
- PICNIC TABLE
- BOULDER SEATING
- BENCH WITH BACK
- BIKE RAMP
- 12' WIDE VEHICULAR ACCESS GATE
- PAINTED 40YD DASH TRACK ON CONCRETE WITH RUNNING CIRCUIT SIGNAGE AROUND SPORTS COURTS
- BOULDER RETAINING WALL
- CONCRETE SEATWALL
- CONCRETE FLUSH CURB
- BBQ
- PET WASTE STATION
- BIKE RACK
- TUBE STEEL SWING GATE
- BOULDERS
- LOGS
- ACCESSIBLE DRINKING FOUNTAIN
- ACCESSIBLE DRINKING FOUNTAIN WITH DOG BOWL
- TRASH AND RECYCLING RECEPTACLES
- SITE SECURITY LIGHTING
- ROLLED CURB WITH REMOVABLE BOLLARD
- ADA RAMP

COUNCIL DISTRICT: 9

DATE	ACTION	REFERENCE DOCUMENTS		
	SITE ACQUIRED	RESO. NO.	COST \$:	ACRES:
	SITE DEDICATED	ORD. NO.		ACRES:
	GDP CONSULTANT HIRED	RESO. NO.	NAME:	
	P&R BOARD APPROVAL	PF&R APPROVAL	DATE: 11/17/21	
	INITIAL DEVELOPMENT	CIP NO.	J.O. NO.	DRWG. NO.
		CIP NO.	J.O. NO.	DRWG. NO.
		CIP NO.	J.O. NO.	DRWG. NO.
		CIP NO.	J.O. NO.	DRWG. NO.
		CIP NO.	J.O. NO.	DRWG. NO.
		CIP NO.	J.O. NO.	DRWG. NO.
		CIP NO.	J.O. NO.	DRWG. NO.

IMPROVEMENTS SUMMARY (DATA FROM AS-BUILT DRAWINGS)					
ITEM	QUANTITY	ITEM	QUANTITY	ITEM	QUANTITY
TOTAL SITE	9.7 AC	AMPHITHEATER	3,290 SF	CONCRETE WALKWAYS	60,590 SF
IMPROVED AREA	9.7 AC	NATURE EXPLORATION	3,235 SF	D.G. PAVING	51,165 SF
TURF	1.75 AC	PLAY AREA 2-5, 5-12	8,383 SF	SPORTS SURFACING	12,575 SF
UNDERSTORY PLANTING	1.87 AC	BIKE RACK	6	RUBBERIZED SURFACE	10,963 SF
BUFFER PLANTING	.97 AC	BASKETBALL COURT	7,175 SF	ACCESSIBLE CURB RAMP	138 SF
VEGETATIVE BASIN	22,172 SF	PICKLEBALL COURT	5,400 SF	CONCRETE MOW CURB	642 LF
MULCH AREA	1,420 SF	FITNESS EQUIPMENT	11 PCS	C.I.P. CONCRETE WALL	245 LF
FIBAR	3,235 SF	SWING SET W/ 4 SWINGS	1	PET WASTE STATION	2
TREES	210	PREFAB RESTROOM	132 SF	PERIMETER FENCING	1,884 LF
DOG PARK	10,080 SF	SHADE CANOPY STRUCTURE	5,603 SF	BOULDERS 3X3, 4X4, 5X5	301
GARDEN BEDS 5' X 20'	20	COBBLE	921 SF	SEATING BOULDERS	8

CITY OF SAN DIEGO PARK AND RECREATION DEPARTMENT

THE GENERAL DEVELOPMENT PLAN

CHOLLAS TRIANGLE PARK

LAMBERT COORDINATES: 212-1746

THOMAS BROTHERS PAGE: 1270, GRID B5 & B6





PLANTING LEGEND

- 40' CANOPY TREE, SUCH AS:  
QUERCUS AGRIFOLIA  
ALNUS RHOMBIFOLIA
- 25' CANOPY TREE, SUCH AS:  
PLATANUS RACEMOSA  
POPULUS FREMONTII
- STREET TREE, SUCH AS:  
LOPHOSTEMON CONFERTUS  
ULMUS PARVIFOLIA
- ACCENT TREE, SUCH AS:  
CERCIS CANADENSIS 'FOREST PANSY'  
LAGERSTROEMIA INDICA  
PARKINSONIA X 'DESERT MUSEUM'  
ARBUTUS 'MARINA'
- SCREENING HEDGE  
PITTOSPORUM TENUIFOLIUM SP.  
ACACIA CULTRIFORMIS  
DODONAEA VISCOSA
- PARK UNDERSTORY, SUCH AS:  
AGAVE SP.  
DASYLIRION WHEELERI  
MUHLENBERGIA DUBIA  
HESPERALOE PARVIFLORA  
SALVIA APIANA
- BUFFER, SUCH AS:  
SALVIA APIANA  
ERIOGONUM FASCICULATUM  
YUCCA WHIPPLEI  
BACCHARIS PILULARIS 'PIGEON POINT'
- BIOSWALE, SUCH AS:  
CAREX SPISSA  
FESTUCA RUBRA  
LEYMUS CONDENSATUS 'CANYON PRINCE'  
ACHILLEA MILLEFOLIUM  
JUNCUS PATENS
- TURF, SUCH AS:  
TURF SOD MIX SUCH AS:  
GN-1 HYBRID BERMUDA

HARDSCAPE LEGEND

- CONCRETE
- ASPHALT
- TEMPORARY ACCESS
- P.I.P. RUBBERIZED SOFT SURFACING
- SPORTS COURT SURFACING
- DECOMPOSED GRANITE
- BARK MULCH
- FIBAR
- COBBLE
- RIPARIAN BUFFER
- LIMIT OF WORK

IMPROVEMENTS LEGEND

- MULTI-PURPOSE LAWN
- AMPHITHEATER
- 12' CONCRETE PERIMETER PATH
- 12' DECOMPOSED GRANITE MULTI-PURPOSE PATH
- VEGETATIVE STORMWATER BASIN WITH COBBLE AND BOULDERS
- OFF-LEASH DOG AREA FOR LARGE AND SMALL DOGS WITH 4'H PERIMETER FENCE
- COMMUNITY GARDEN WITH 6'H PERIMETER FENCE
- NATURE EXPLORATION AREA WITH LOGS, BOULDERS, STUMPS, INTERPRETIVE SIGNAGE AND FIBAR PLAY SURFACING
- PLAY AREA WITH P.I.P. RUBBERIZED PLAY SURFACING AND SHADE SAIL STRUCTURES
- BASKETBALL COURT WITH 10'H PERIMETER FENCE
- PICKLEBALL COURT WITH 6'H PERIMETER FENCE
- FITNESS AREA WITH P.I.P. RUBBERIZED SURFACING WITH RUNNING TRACK STRIPING AND SIGNAGE
- FITNESS EQUIPMENT STATION
- PRE-FABRICATED ACCESSIBLE COMFORT STATION WITH BOTTLE FILLING STATION AND TRASH AND RECYCLING RECEPTACLES
- METAL SHADE STRUCTURE
- TEMPORARY ACCESS ROAD
- FUTURE LEA ST. EXTENSION  
(THE EXTENSION OF LEA STREET IS SHOWN FOR REFERENCE ONLY AND NOT PART OF THE GDP)
- ON-STREET PARKING, MINIMUM 14 SPACES
- SPLIT RAIL FENCE
- INTERPRETIVE SIGNAGE
- MONUMENT SIGN
- PICNIC TABLE
- BOULDER SEATING
- BENCH WITH BACK
- BIKE RAMP
- 12' WIDE VEHICULAR ACCESS GATE
- PAINTED 40YD DASH TRACK ON CONCRETE WITH RUNNING CIRCUIT SIGNAGE AROUND SPORTS COURTS
- BOULDER RETAINING WALL
- CONCRETE SEATWALL
- CONCRETE FLUSH CURB
- BBQ
- PET WASTE STATION
- BIKE RACK
- TUBE STEEL SWING GATE
- BOULDERS
- LOGS
- ACCESSIBLE DRINKING FOUNTAIN
- ACCESSIBLE DRINKING FOUNTAIN WITH DOG BOWL
- TRASH AND RECYCLING RECEPTACLES
- SITE SECURITY LIGHTING
- ROLLED CURB WITH REMOVABLE BOLLARD
- ADA RAMP

COUNCIL DISTRICT: 9

DATE	ACTION	REFERENCE DOCUMENTS		
	SITE ACQUIRED	RESO. NO.	COST \$:	ACRES:
	SITE DEDICATED	ORD. NO.		ACRES:
	GDP CONSULTANT HIRED	RESO. NO.	NAME:	
	P&R BOARD APPROVAL	PF&R APPROVAL	DATE: 11/17/21	
	INITIAL DEVELOPMENT	CIP NO.	J.O. NO.	DRWG. NO.
		CIP NO.	J.O. NO.	DRWG. NO.
		CIP NO.	J.O. NO.	DRWG. NO.
		CIP NO.	J.O. NO.	DRWG. NO.
		CIP NO.	J.O. NO.	DRWG. NO.
		CIP NO.	J.O. NO.	DRWG. NO.
		CIP NO.	J.O. NO.	DRWG. NO.

IMPROVEMENTS SUMMARY (DATA FROM AS-BUILT DRAWINGS)					
ITEM	QUANTITY	ITEM	QUANTITY	ITEM	QUANTITY
TOTAL SITE	9.7 AC	AMPHITHEATER	3,290 SF	CONCRETE WALKWAYS	60,590 SF
IMPROVED AREA	9.7 AC	NATURE EXPLORATION	3,235 SF	D.G. PAVING	51,165 SF
TURF	1.75 AC	PLAY AREA 2-5, 5-12	8,383 SF	SPORTS SURFACING	12,575 SF
UNDERSTORY PLANTING	1.87 AC	BIKE RACK	6	RUBBERIZED SURFACE	10,963 SF
BUFFER PLANTING	.97 AC	BASKETBALL COURT	7,175 SF	ACCESSIBLE CURB RAMP	138 SF
VEGETATIVE BASIN	22,172 SF	PICKLEBALL COURT	5,400 SF	CONCRETE MOW CURB	642 LF
MULCH AREA	1,420 SF	FITNESS EQUIPMENT	11 PCS	C.I.P. CONCRETE WALL	245 LF
FIBAR	3,235 SF	SWING SET W/ 4 SWINGS	1	PET WASTE STATION	2
TREES	210	PREFAB RESTROOM	132 SF	PERIMETER FENCING	1,884 LF
DOG PARK	10,080 SF	SHADE CANOPY STRUCTURE	5,603 SF	BOULDERS 3X3, 4X4, 5X5	301
GARDEN BEDS 5' X 20'	20	COBBLE	921 SF	SEATING BOULDERS	8
				REVISION	

CITY OF SAN DIEGO PARK AND RECREATION DEPARTMENT

THE GENERAL DEVELOPMENT PLAN

CHOLLAS TRIANGLE PARK

LAMBERT COORDINATES: 212-1746

THOMAS BROTHERS PAGE: 1270, GRID B5 & B6



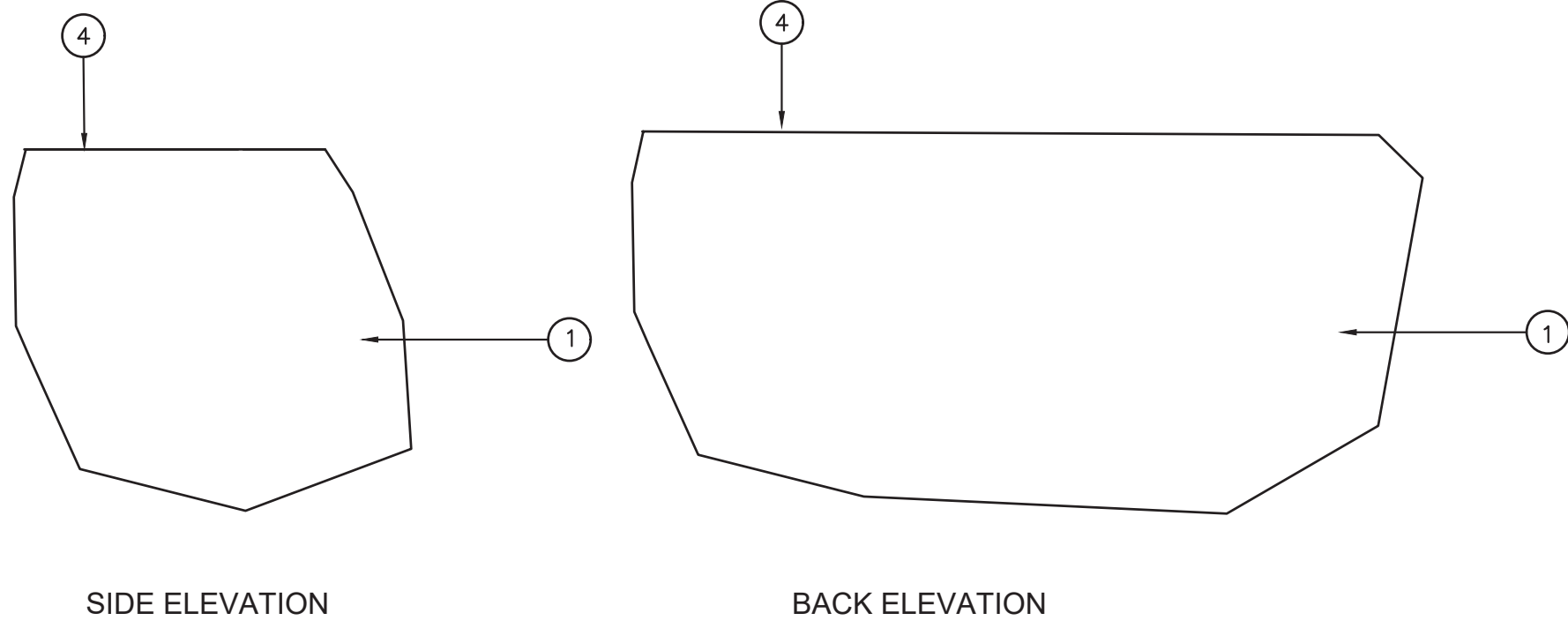
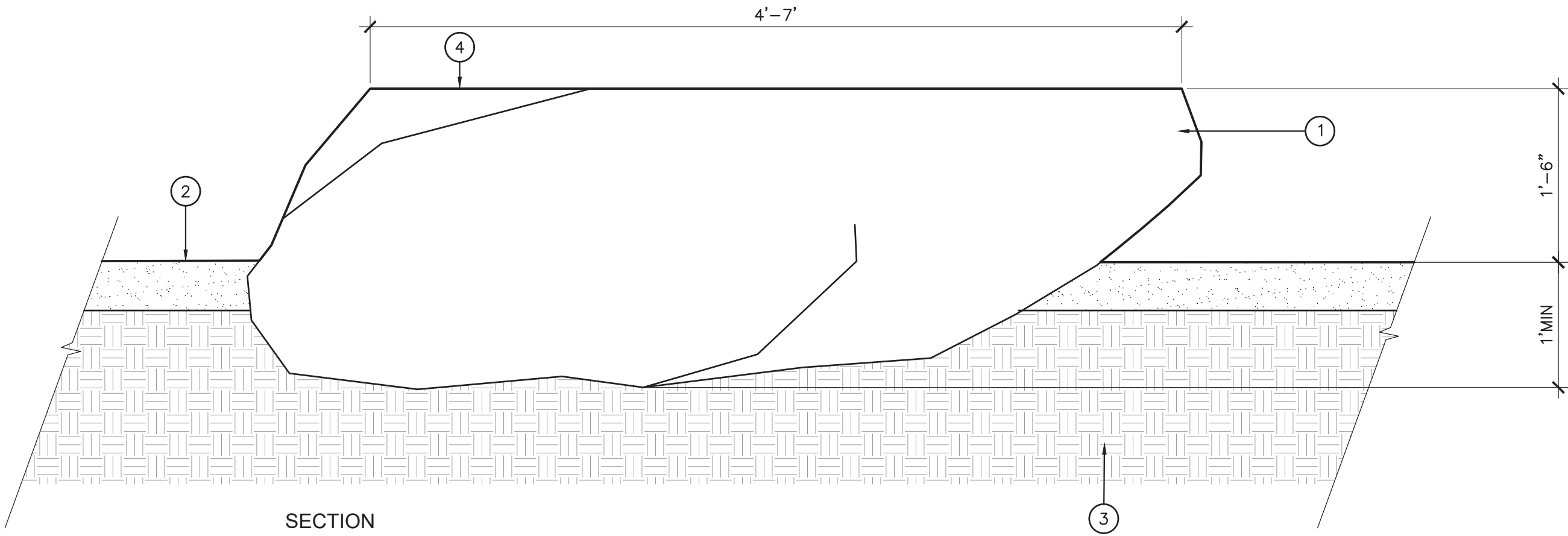
- 1

BOULDER, PER PLAN
- 2

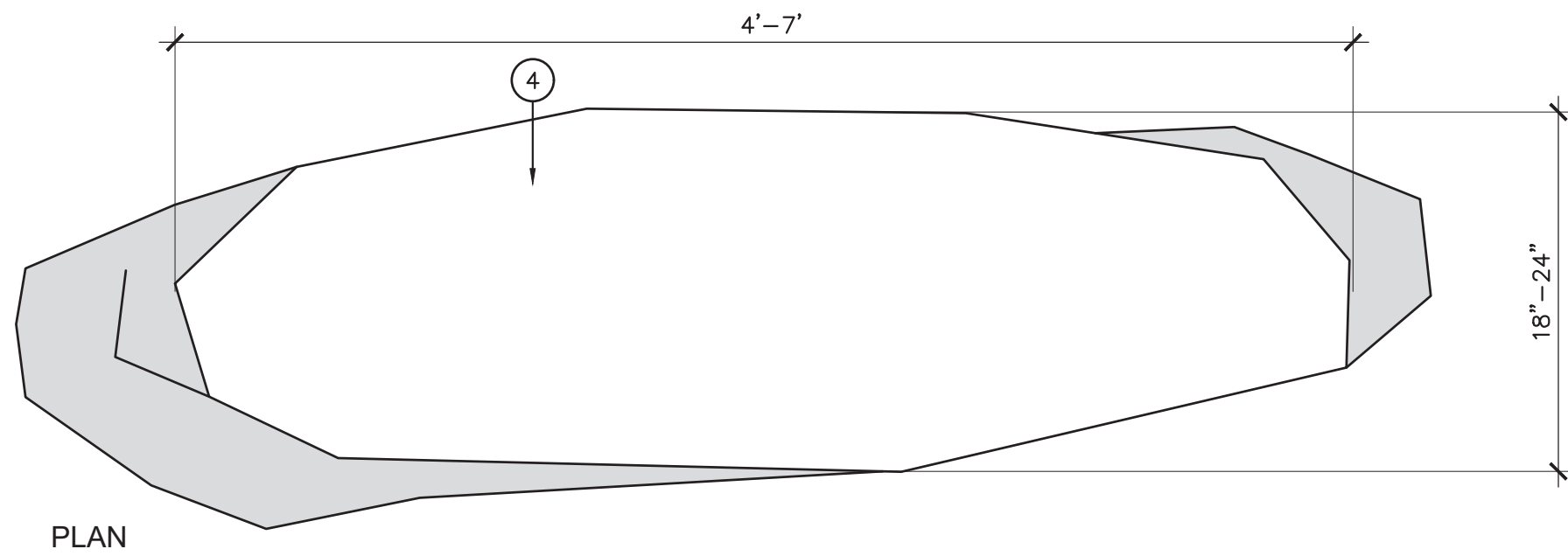
FINISH GRADE PER PLAN
- 3

95% COMPACTED SUBGRADE AT BOULDER. 85% COMPACTION IN ADJACENT PLANTING AREAS, TYPICAL.
- 4

SAWCUT LEVEL SITTING SURFACE HONED FINISH

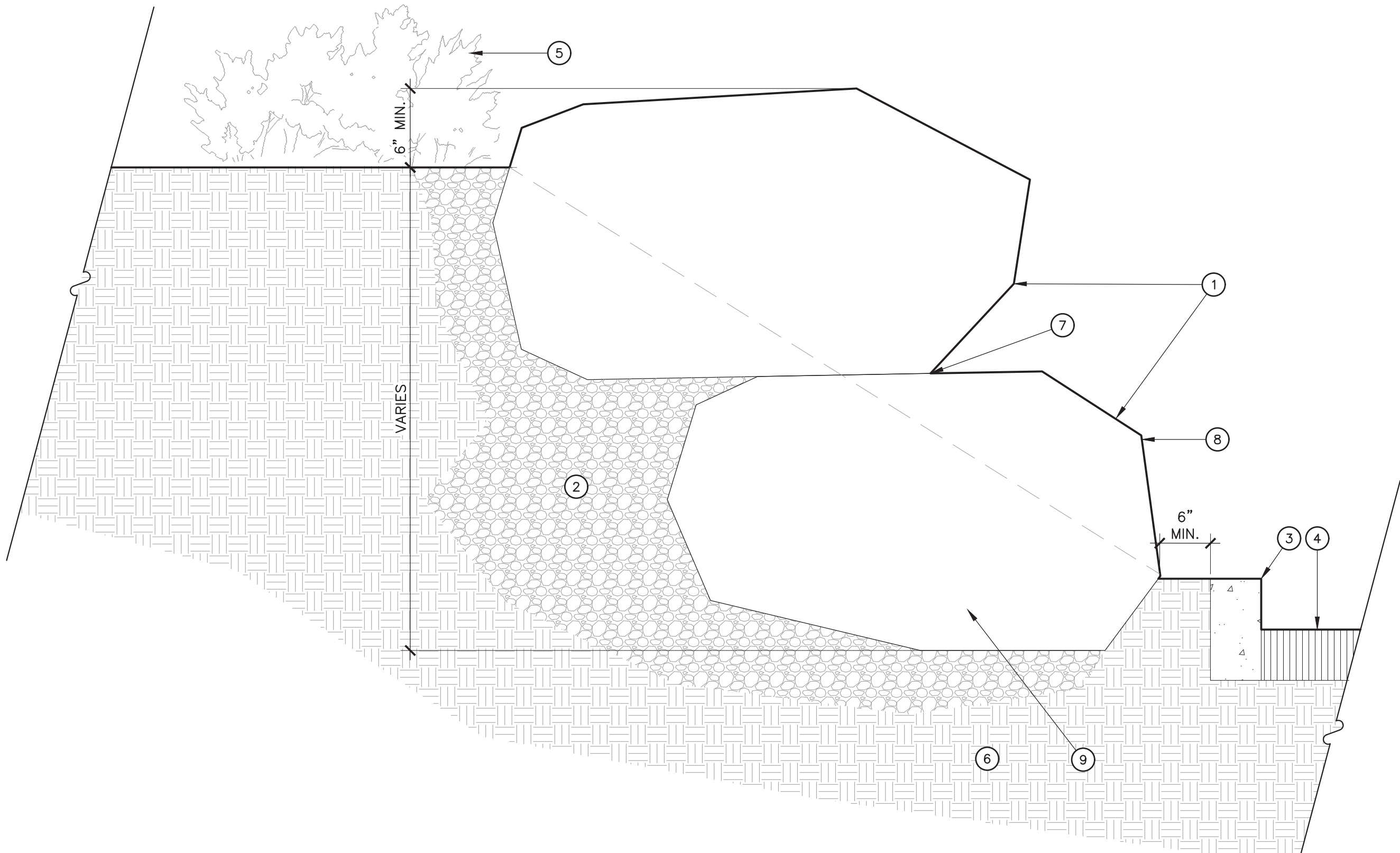


- NOTES:
- LANDSCAPE ARCHITECT TO OBSERVE AND APPROVE CORRECT LOCATIONS OF BOULDERS PRIOR TO INSTALLATION.
  - BOULDER TO BE PLACED SO THAT FLAT SURFACE FACES UP, WITH NO PROTRUSIONS EXTENDING VERTICALLY OR ROUGH EDGES EXPOSED.
  - CONNECTION BETWEEN BOULDER AND FINISH SURFACE SHALL BE TIGHT AND SHOW NO SEPARATION (BOULDER TO BE PLACED FIRST)



1 BOULDER SEATING

SCALE: 1" = 1'-0"



- 1

BOULDERS PER PLAN
- 2

3"-6" ROCK TO BE USED FOR BACKFILL
- 3

ADJACENT CONCRETE CURB
- 4

PAVING PER PLAN
- 5

ADJACENT PLANTING PER PLAN
- 6

COMPACTED SUBGRADE
- 7

TOP OF BOULDER TO BE LEVEL
- 8

FACE OF BOULDER WALL TO BE TILTED BACK TOWARDS HILLSIDE
- 9

SET BOULDER AT MIN. 30% +/- BELOW FINISH SURFACE

- NOTES:
- INSTALL BOULDERS PRIOR TO CONCRETE PAVING.
  - CONTRACTOR TO PROVIDE MIN. 10' LONG MOCKUP OF BOULDER WALL FOR LANDSCAPE ARCHITECT TO REVIEW PRIOR TO INSTALLATION.

2 BOULDER ROCK RETAINING WALL

SCALE: 1" = 1'-0"

COUNCIL DISTRICT: 9

DATE	ACTION	REFERENCE DOCUMENTS			
	SITE ACQUIRED	RESO. NO.	COST \$:		ACRES:
	SITE DEDICATED	ORD. NO.			ACRES:
	GDP CONSULTANT HIRED	RESO. NO.	NAME:		
	P&R BOARD APPROVAL	PF&R APPROVAL	DATE: 11/17/21		
	INITIAL DEVELOPMENT	CIP NO.	J.O. NO.	DRWG. NO.	
		CIP NO.	J.O. NO.	DRWG. NO.	
		CIP NO.	J.O. NO.	DRWG. NO.	
		CIP NO.	J.O. NO.	DRWG. NO.	
		CIP NO.	J.O. NO.	DRWG. NO.	
		CIP NO.	J.O. NO.	DRWG. NO.	
		CIP NO.	J.O. NO.	DRWG. NO.	

IMPROVEMENTS SUMMARY (DATA FROM AS-BUILT DRAWINGS)					
ITEM	QUANTITY	ITEM	QUANTITY	ITEM	QUANTITY
TOTAL SITE	9.7 AC	AMPHITHEATER	3,290 SF	CONCRETE WALKWAYS	60,590 SF
IMPROVED AREA	9.7 AC	NATURE EXPLORATION	3,235 SF	D.G. PAVING	51,165 SF
TURF	1.75 AC	PLAY AREA 2-5, 5-12	8,383 SF	SPORTS SURFACING	12,575 SF
UNDERSTORY PLANTING	1.87 AC	BIKE RACK	6	RUBBERIZED SURFACE	10,963 SF
BUFFER PLANTING	.97 AC	BASKETBALL COURT	7,175 SF	ACCESSIBLE CURB RAMP	138 SF
VEGETATIVE BASIN	22,172 SF	PICKLEBALL COURT	5,400 SF	CONCRETE MOW CURB	642 LF
MULCH AREA	1,420 SF	FITNESS EQUIPMENT	11 PCS	C.I.P. CONCRETE WALL	245 LF
FIBAR	3,235 SF	SWING SET W/ 4 SWINGS	1	PET WASTE STATION	2
TREES	210	PREFAB RESTROOM	132 SF	PERIMETER FENCING	1,884 LF
DOG PARK	10,080 SF	SHADE CANOPY STRUCTURE	5,603 SF	BOULDERS 3X3, 4X4, 5X5	301
GARDEN BEDS 5' X 20'	20	COBBLE	921 SF	SEATING BOULDERS	8
				REVISION	

CITY OF SAN DIEGO PARK AND RECREATION DEPARTMENT

THE GENERAL DEVELOPMENT PLAN

CHOLLAS TRIANGLE PARK

LAMBERT COORDINATES: 212-1746

THOMAS BROTHERS PAGE: 1270, GRID B5 & B6

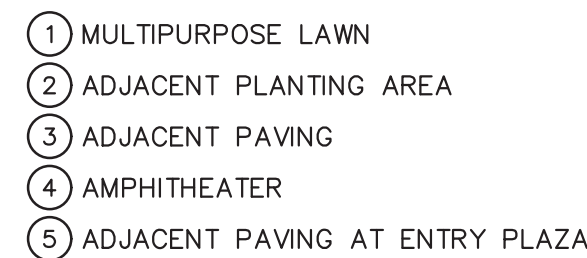


- NOTE:
1. CONCRETE FOOTING REQUIRED, CONSTRUCTION BY OTHERS.



- ## 2 SITE SECURITY LIGHTING

TS



NTS



SCALE:  $1/4" = 1'-0"$

[illegible]

IMPROVEMENTS SUMMARY (DATA FROM AS-BUILT DRAWINGS)							
ITEM	QUANTITY	ITEM	QUANTITY	ITEM	QUANTITY	ITEM	QUANTITY
TOTAL SITE	9.7 AC	AMPHITHEATER	3,290 SF	CONCRETE WALKWAYS	60,590 SF	SECURITY LIGHTS	67
IMPROVED AREA	9.7 AC	NATURE EXPLORATION	3,235 SF	D.G. PAVING	51,165 SF	ENTRY SIGNAGE	3
TURF	1.75 AC	PLAY AREA 2-5, 5-12	8,383 SF	SPORTS SURFACING	12,575 SF	PARK SIGNAGE	4
UNDERSTORY PLANTING	1.87 AC	BIKE RACK	6	RUBBERIZED SURFACE	10,963 SF	TUBE STEEL SWING GATE	1
BUFFER PLANTING	.97 AC	BASKETBALL COURT	7,175 SF	ACCESSIBLE CURB RAMP	138 SF	PICNIC TABLES	11
VEGETATIVE BASIN	22,172 SF	PICKLEBALL COURT	5,400 SF	CONCRETE MOW CURB	642 LF	BBQ	5
MULCH AREA	1,420 SF	FITNESS EQUIPMENT	11 PCS	C.I.P. CONCRETE WALL	245 LF	BENCH W/ BACK	42
FIBAR	3,235 SF	SWING SET W/ 4 SWINGS	1	PET WASTE STATION	2	REMOVABLE BOLLARDS	1
TREES	210	PREFAB RESTROOM	132 SF	PERIMETER FENCING	1,884 LF	DRINKING FOUNTAIN	4
DOG PARK	10,080 SF	SHADE CANOPY STRUCTURE	5,603 SF	BOULDERS 3X3, 4X4, 5X5	301	TRASH RECEPTACLES	5 SETS
GARDEN BEDS 5' X 20'	20	COBBLE	921 SF	SEATING BOULDERS	8	REVISION	

CITY OF SAN DIEGO PARK AND RECREATION DEPARTMENT

## THE GENERAL DEVELOPMENT PLAN

# CHOLLAS TRIANGLE PARK

LAMBERT COORDINATES: 212-1746

THOMAS BROTHERS PAGE: 1270, GRID B5 & B6

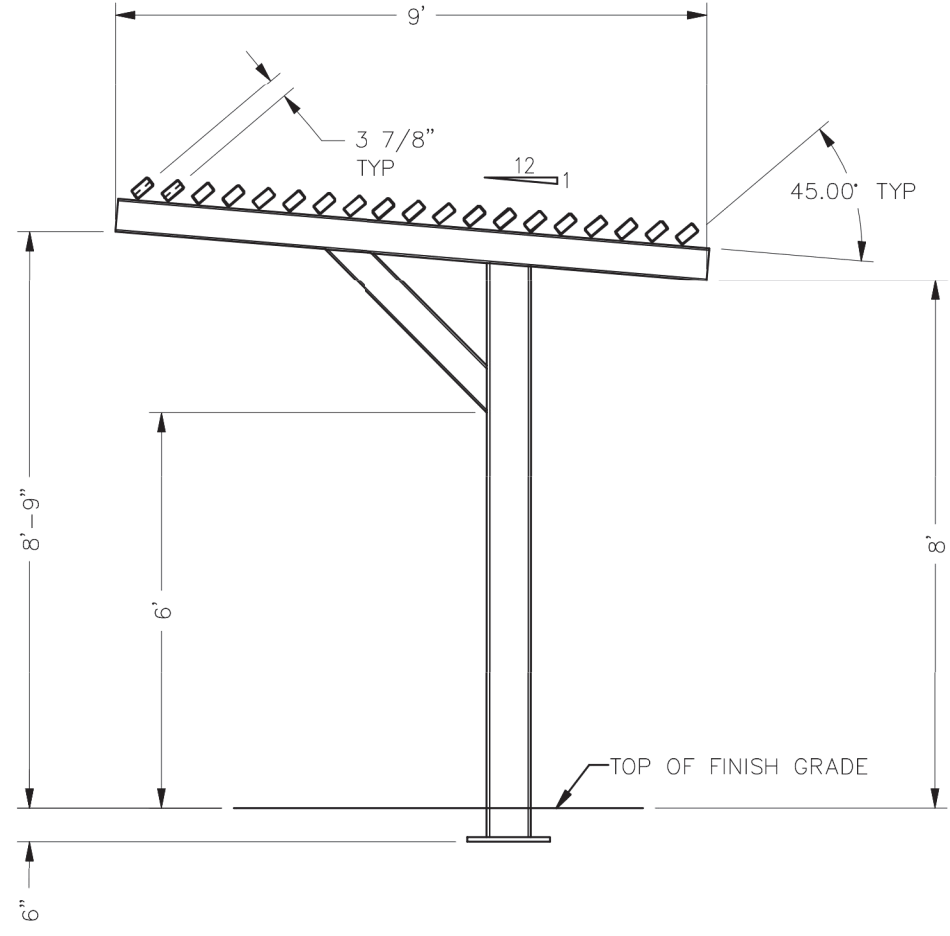
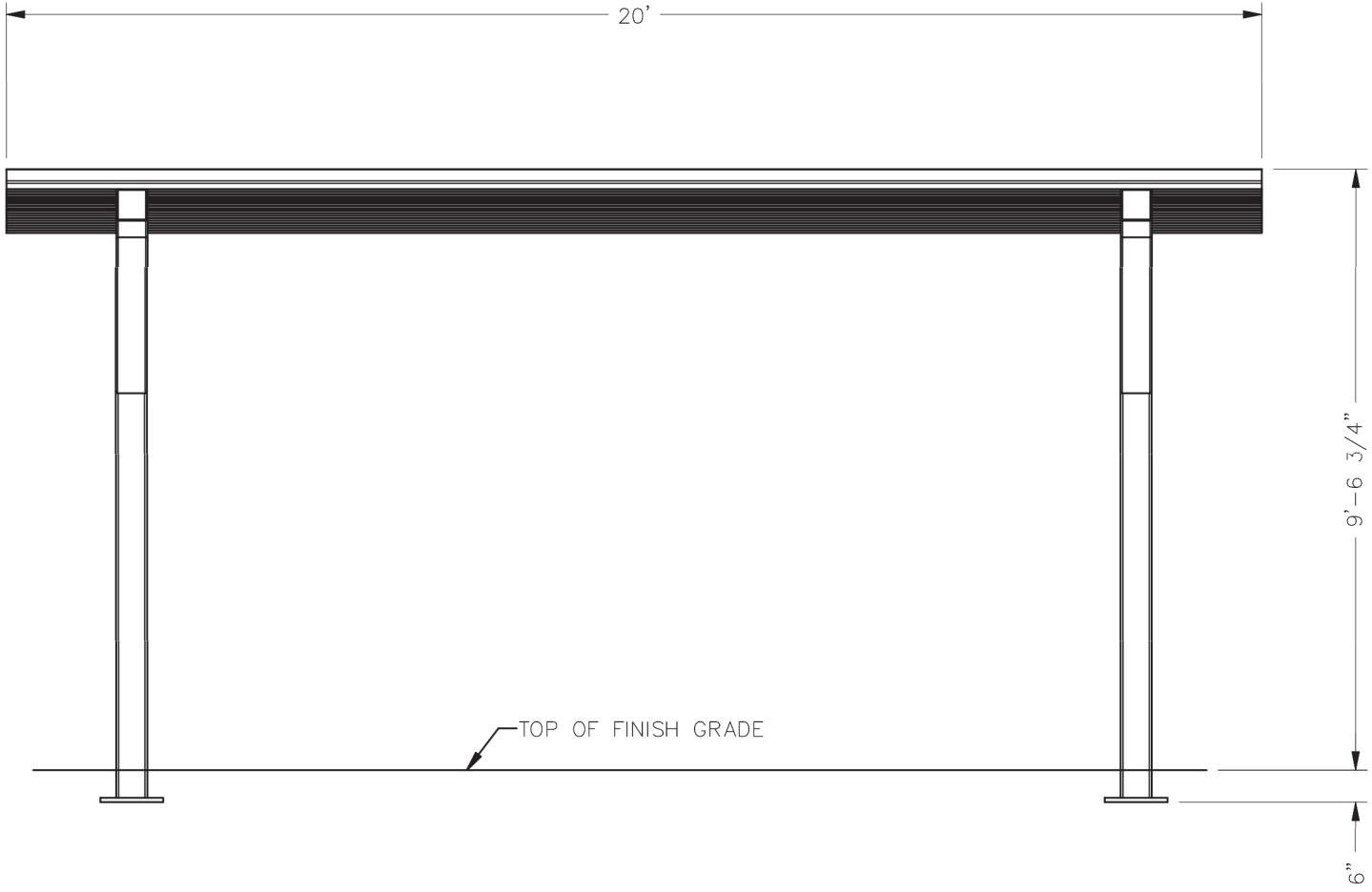
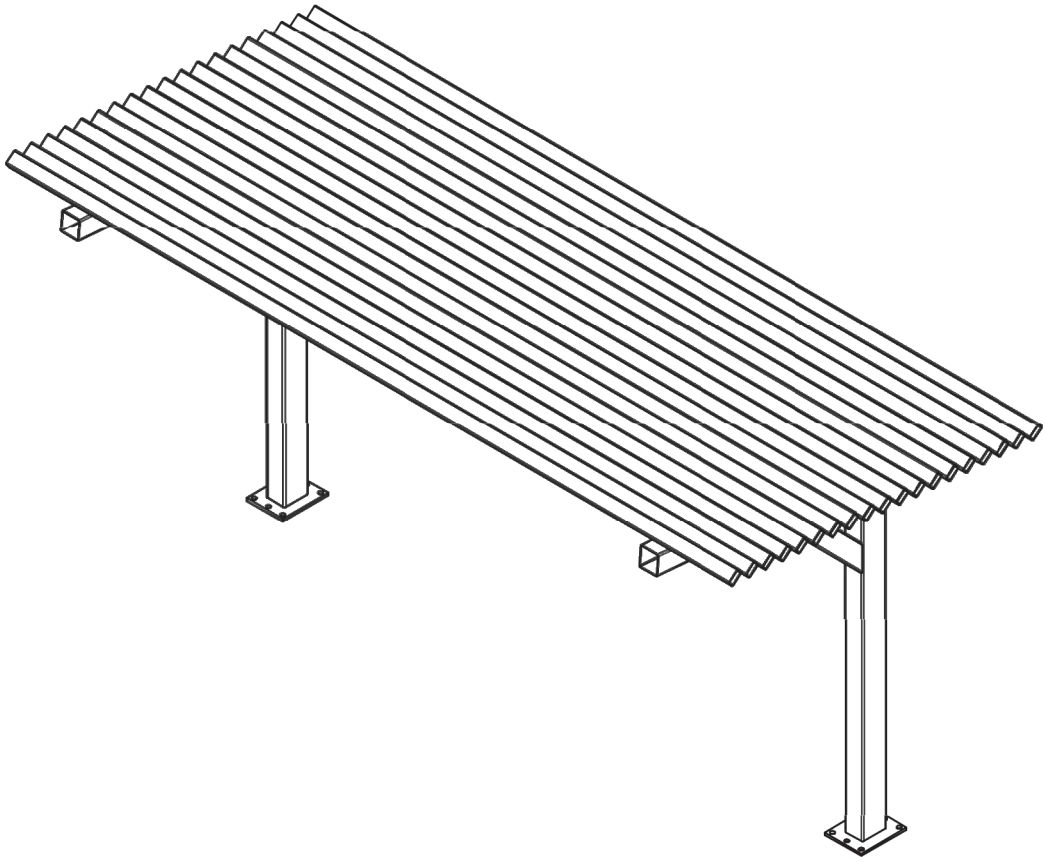




PERFORATED METAL

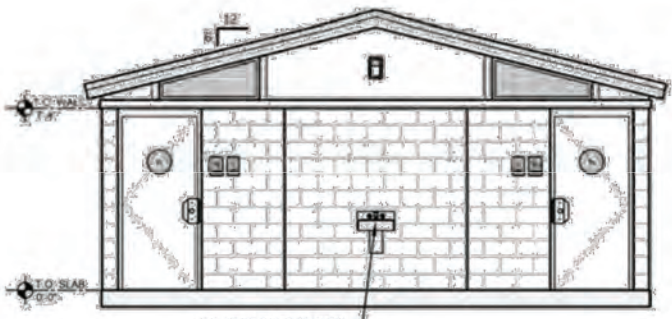


METAL LOUVRES



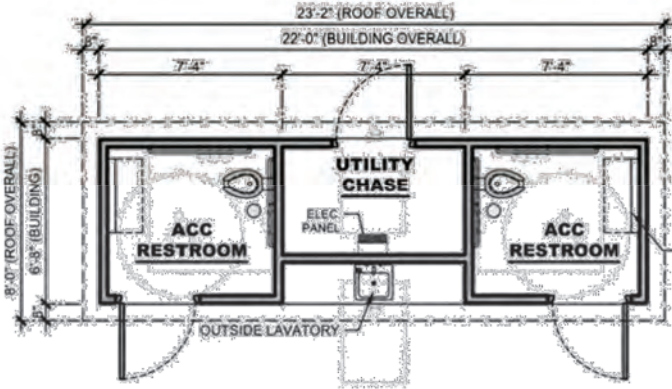
1 METAL SHADE STRUCTURE

SCALE: NTS



ELEVATION

SCALE: 1/8"=1'-0"



FLOOR PLAN

SCALE: 1/8"=1'-0"

NOTE: STAINLESS FIXTURES



NOTE:  
DOOR PICTOGRAM  
(MANDATORY IN CALIFORNIA)  
OPTIONAL IN OTHER STATES

2 COMFORT STATION

SCALE: 1/8"=1'-0"

COUNCIL DISTRICT: 9

DATE	ACTION	REFERENCE DOCUMENTS			
	SITE ACQUIRED	RESO. NO.	COST \$:	ACRES:	
	SITE DEDICATED	ORD. NO.		ACRES:	
	GDP CONSULTANT HIRED	RESO. NO.	NAME:		
	P&R BOARD APPROVAL	PF&R APPROVAL	DATE: 11/17/21		
	INITIAL DEVELOPMENT	CIP NO.	J.O. NO.	DRWG. NO.	
		CIP NO.	J.O. NO.	DRWG. NO.	
		CIP NO.	J.O. NO.	DRWG. NO.	
		CIP NO.	J.O. NO.	DRWG. NO.	
		CIP NO.	J.O. NO.	DRWG. NO.	
		CIP NO.	J.O. NO.	DRWG. NO.	
		CIP NO.	J.O. NO.	DRWG. NO.	

IMPROVEMENTS SUMMARY (DATA FROM AS-BUILT DRAWINGS)					
ITEM	QUANTITY	ITEM	QUANTITY	ITEM	QUANTITY
TOTAL SITE	9.7 AC	AMPHITHEATER	3,290 SF	CONCRETE WALKWAYS	60,590 SF
IMPROVED AREA	9.7 AC	NATURE EXPLORATION	3,235 SF	D.G. PAVING	51,165 SF
TURF	1.75 AC	PLAY AREA 2-5, 5-12	8,383 SF	SPORTS SURFACING	12,575 SF
UNDERSTORY PLANTING	1.87 AC	BIKE RACK	6	RUBBERIZED SURFACE	10,963 SF
BUFFER PLANTING	.97 AC	BASKETBALL COURT	7,175 SF	ACCESSIBLE CURB RAMP	138 SF
VEGETATIVE BASIN	22,172 SF	PICKLEBALL COURT	5,400 SF	CONCRETE MOW CURB	642 LF
MULCH AREA	1,420 SF	FITNESS EQUIPMENT	11 PCS	C.I.P. CONCRETE WALL	245 LF
FIBAR	3,235 SF	SWING SET W/ 4 SWINGS	1	PET WASTE STATION	2
TREES	210	PREFAB RESTROOM	132 SF	PERIMETER FENCING	1,884 LF
DOG PARK	10,080 SF	SHADE CANOPY STRUCTURE	5,603 SF	BOULDERS 3X3, 4X4, 5X5	301
GARDEN BEDS 5' X 20'	20	COBBLE	921 SF	SEATING BOULDERS	8
				REVISION	

CITY OF SAN DIEGO PARK AND RECREATION DEPARTMENT

THE GENERAL DEVELOPMENT PLAN

# CHOLLAS TRIANGLE PARK

LAMBERT COORDINATES: 212-1746

THOMAS BROTHERS PAGE: 1270, GRID B5 & B6



ENCLOSED PLAY AREA



5-12 Play Structure with Climber and Slide



2-5 Play Structure



Swings



Omni-Spinner



Chill Spinner



We-Saw



Oodle Swing



Logs and Boulders in Fibar

NATURE EXPLORATION

SPORTS COURTS



Basketball



Basketball/Futsal



Pickleball

SHADE



Metal Shade Structure



Playground Shade

GATE/FENCING



Tube Steel Swing Gate



Split Rail Fence

STORMWATER



Vegetated Stormwater Basin with Cobble and Boulders

FITNESS AREA EQUIPMENT



Squat Press



Pull-up/Dip



Balance Steps



Ab Crunch/Leg Lift



Cardio Stepper



Elliptical



Combi 5 Street Workout

FITNESS STATION EQUIPMENT



Stretch



Assisted Row/Push-up



Hand Cycler



Chest/Back Press

HARDSCAPE



Standard Paving



Decomposed Granite Paving

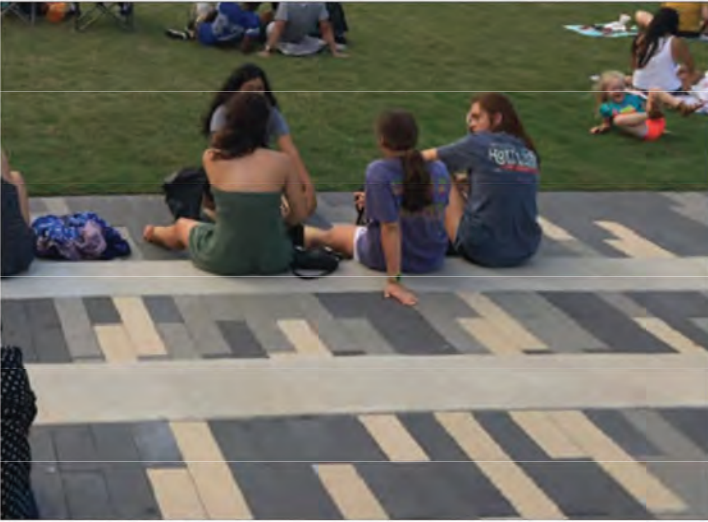


Play Safety Rubber



Comfort Station

SITE AMENITIES



Amphitheater



Community Garden



Off-Leash Dog Area



Bocce Court



Interpretive Signage

SITE FURNISHING



Boulder Seating



Picnic Table



ADA Picnic Table



Bench with Back



Drinking Fountain with Dog Bowl



Drinking Fountain with Bottle Filler



Pet Waste Station



BBQ



Trash/Recycling



Bike Rack



Site Security Lighting

SITE LIGHTING

COUNCIL DISTRICT: 9

DATE	ACTION	REFERENCE DOCUMENTS			
	SITE ACQUIRED	RESO. NO.	COST \$:	ACRES:	
	SITE DEDICATED	ORD. NO.		ACRES:	
	GDP CONSULTANT HIRED	RESO. NO.	NAME:		
	P&R BOARD APPROVAL	PF&R APPROVAL	DATE: 11/17/21		
	INITIAL DEVELOPMENT	CIP NO.	J.O. NO.	DRWG. NO.	
		CIP NO.	J.O. NO.	DRWG. NO.	
		CIP NO.	J.O. NO.	DRWG. NO.	
		CIP NO.	J.O. NO.	DRWG. NO.	
		CIP NO.	J.O. NO.	DRWG. NO.	
		CIP NO.	J.O. NO.	DRWG. NO.	
		CIP NO.	J.O. NO.	DRWG. NO.	

IMPROVEMENTS SUMMARY (DATA FROM AS-BUILT DRAWINGS)					
ITEM	QUANTITY	ITEM	QUANTITY	ITEM	QUANTITY
TOTAL SITE	9.7 AC	AMPHITHEATER	3,290 SF	CONCRETE WALKWAYS	60,590 SF
IMPROVED AREA	9.7 AC	NATURE EXPLORATION	3,235 SF	D.G. PAVING	51,165 SF
TURF	1.75 AC	PLAY AREA 2-5, 5-12	8,383 SF	SPORTS SURFACING	12,575 SF
UNDERSTORY PLANTING	1.87 AC	BIKE RACK	6	RUBBERIZED SURFACE	10,963 SF
BUFFER PLANTING	.97 AC	BASKETBALL COURT	7,175 SF	ACCESSIBLE CURB RAMP	138 SF
VEGETATIVE BASIN	22,172 SF	PICKLEBALL COURT	5,400 SF	CONCRETE MOW CURB	642 LF
MULCH AREA	1,420 SF	FITNESS EQUIPMENT	11 PCS	C.I.P. CONCRETE WALL	245 LF
FIBAR	3,235 SF	SWING SET W/ 4 SWINGS	1	PET WASTE STATION	2
TREES	210	PREFAB RESTROOM	132 SF	PERIMETER FENCING	1,884 LF
DOG PARK	10,080 SF	SHADE CANOPY STRUCTURE	5,603 SF	BOULDERS 3X3, 4X4, 5X5	301
GARDEN BEDS 5' X 20'	20	COBBLE	921 SF	SEATING BOULDERS	8
				REVISION	

CITY OF SAN DIEGO PARK AND RECREATION DEPARTMENT

THE GENERAL DEVELOPMENT PLAN

CHOLLAS TRIANGLE PARK

LAMBERT COORDINATES: 212-1746      THOMAS BROTHERS PAGE: 1270, GRID B5 & B6



40' CANOPY TREE



QUERCUS AGRIFOLIA  
Coast Live Oak

25' CANOPY TREES



ALNUS RHOMBIFOLIA  
White Alder



PLATANUS RACEMOSA  
Western Sycamore



POPULUS FREMONTII  
Fremont Cottonwood

STREET TREES



LOPHOSTEMON CONFERTUS  
Brisbane Box



ULMUS PARVIFOLIA  
Chinese Elm

ACCENT TREES



CERCIS CANADENSIS 'FOREST PANSY'  
Eastern Redbud



LAGERSTROEMIA INDICA  
Crape Myrtle



PARKINSONIA X 'DESERT MUSEUM'  
Desert Museum Palo Verde



ARBUTUS 'MARINA'  
Strawberry Tree

SCREENING HEDGE



PITTOSPORUM TENUIFOLIUM SP.  
Kohuhu



ACACIA CULTRIFORMIS  
Knife Acacia



DODONAEA VISCOSA  
Hopbush

PARK UNDERSTORY



AGAVE  
Century Plant



DASYLIRION WHEELERI  
Spoon Yucca



MUHLENBERGIA DUBIA  
Pine Mulley



HESPERALOE PARVIFLORA  
Red Yucca

BUFFER



SALVIA APIANA  
White Sage



ERIOGONUM FASCICULATUM  
California Buckwheat



YUCCA WHIPPLEI  
Our Lords Candle



BACCHARIS PILULARIS  
'PIGEON POINT'  
Coyote Bush

BIOSWALE



CAREX SPISSA  
San Diego Sedge



FESTUCA RUBRA  
Red Fescue



LEYMUS CONDENSATUS 'CANYON PRINCE'  
Canyon Prince Wild Rye

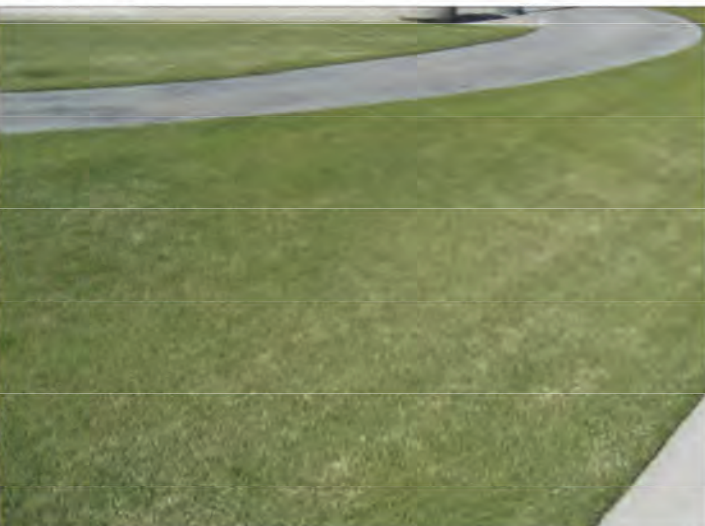


ACHILLEA MILLEFOLIUM  
Common Yarrow



JUNCUS PATENS  
California Grey Rush

TURF



CYNODON DACTYLON  
Hybrid Bermuda

COUNCIL DISTRICT: 9

DATE	ACTION	REFERENCE DOCUMENTS			
	SITE ACQUIRED	RESO. NO.	COST \$:		ACRES:
	SITE DEDICATED	ORD. NO.			ACRES:
	GDP CONSULTANT HIRED	RESO. NO.	NAME:		
	P&R BOARD APPROVAL	PF&R APPROVAL	DATE: 11/17/21		
	INITIAL DEVELOPMENT	CIP NO.	J.O. NO.	DRWG. NO.	
		CIP NO.	J.O. NO.	DRWG. NO.	
		CIP NO.	J.O. NO.	DRWG. NO.	
		CIP NO.	J.O. NO.	DRWG. NO.	
		CIP NO.	J.O. NO.	DRWG. NO.	
		CIP NO.	J.O. NO.	DRWG. NO.	
		CIP NO.	J.O. NO.	DRWG. NO.	

IMPROVEMENTS SUMMARY (DATA FROM AS-BUILT DRAWINGS)					
ITEM	QUANTITY	ITEM	QUANTITY	ITEM	QUANTITY
TOTAL SITE	9.7 AC	AMPHITHEATER	3,290 SF	CONCRETE WALKWAYS	60,590 SF
IMPROVED AREA	9.7 AC	NATURE EXPLORATION	3,235 SF	D.G. PAVING	51,165 SF
TURF	1.75 AC	PLAY AREA 2-5, 5-12	8,383 SF	SPORTS SURFACING	12,575 SF
UNDERSTORY PLANTING	1.87 AC	BIKE RACK	6	RUBBERIZED SURFACE	10,963 SF
BUFFER PLANTING	.97 AC	BASKETBALL COURT	7,175 SF	ACCESSIBLE CURB RAMP	138 SF
VEGETATIVE BASIN	22,172 SF	PICKLEBALL COURT	5,400 SF	CONCRETE MOW CURB	642 LF
MULCH AREA	1,420 SF	FITNESS EQUIPMENT	11 PCS	C.I.P. CONCRETE WALL	245 LF
FIBAR	3,235 SF	SWING SET W/ 4 SWINGS	1	PET WASTE STATION	2
TREES	210	PREFAB RESTROOM	132 SF	PERIMETER FENCING	1,884 LF
DOG PARK	10,080 SF	SHADE CANOPY STRUCTURE	5,603 SF	BOULDERS 3X3, 4X4, 5X5	301
GARDEN BEDS 5' X 20'	20	COBBLE	921 SF	SEATING BOULDERS	8
				REVISION	

CITY OF SAN DIEGO PARK AND RECREATION DEPARTMENT

THE GENERAL DEVELOPMENT PLAN

CHOLLAS TRIANGLE PARK

LAMBERT COORDINATES: 212-1746      THOMAS BROTHERS PAGE: 1270, GRID B5 & B6