

Parks and Recreation Department

Trails at Carmel Mountain Ranch Neighborhood Parks General Development Plans

Park and Recreation Board
February 16, 2023

Action Items 102, 103 and 104



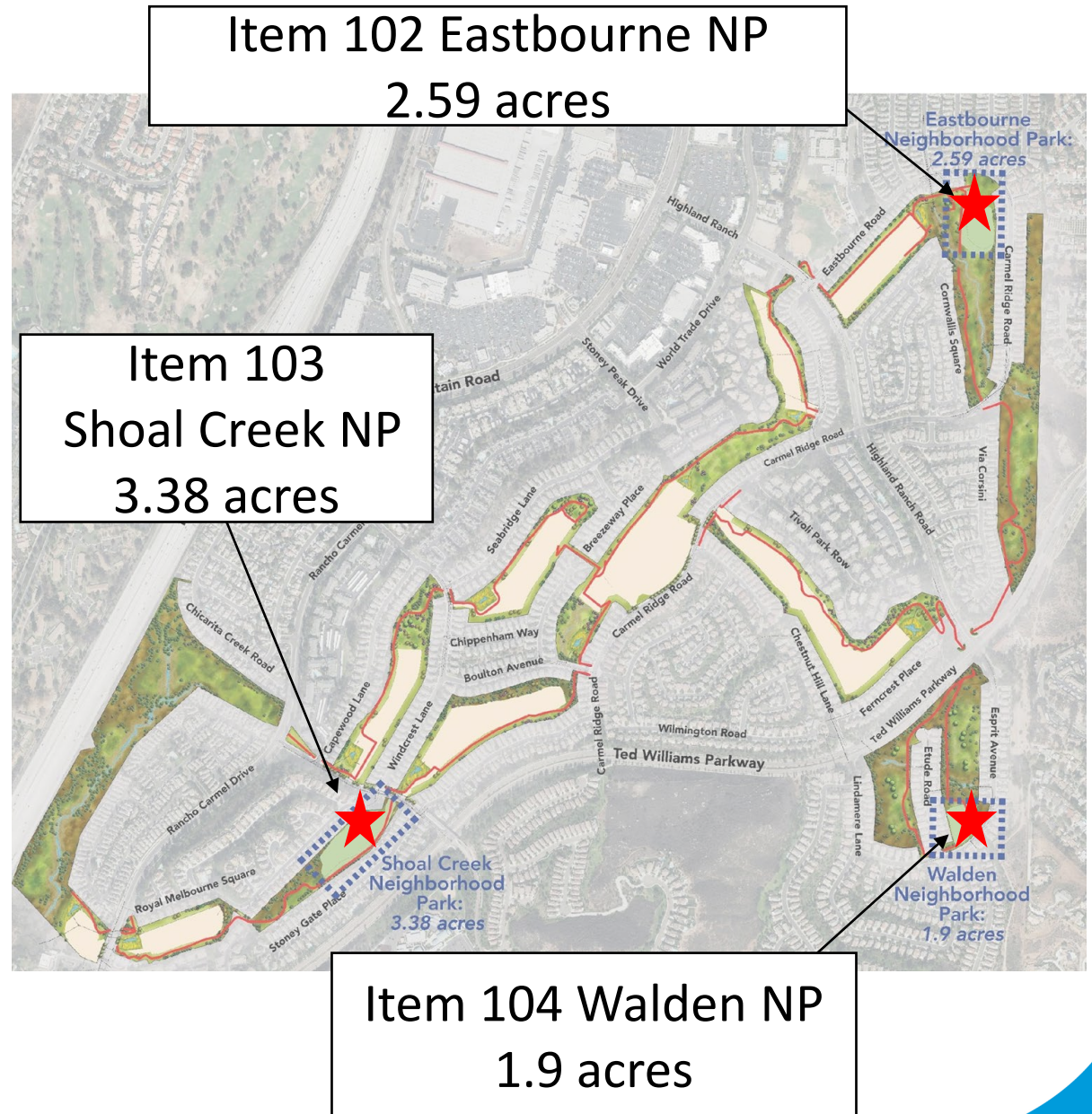
Issue

- Should the Park and Recreation Board recommend approval of the proposed General Development Plans (GDP's) for Eastbourne Neighborhood Park (Item 102), Shoal Creek Neighborhood Park (Item 103), and Walden Neighborhood Park (Item 104)?



Introduction

- Trails at Carmel Mountain Ranch Development, in the CMR Community, Council District 5.
- Includes a total of 7.87 acres of population-based parks.
- Once constructed, the neighborhood parks will be turned over to the City of San Diego and P&R will operate and maintain the parks.



Other Recommendations

- On October 12, 2022, the Carmel Mountain Ranch/ Sabre Springs Community Planning Group voted (6-1-0) to recommend approval of the proposed GDP's for Eastbourne, Shoal Creek and Walden Neighborhood Parks



Item 102 Eastbourne Neighborhood Park

- The approval of Eastbourne Neighborhood Park will provide an additional 2.59 acres and 119 Recreation Value Points of population-based recreational opportunities.



Limits of the
Proposed
Eastbourne
Neighborhood
Park



Eastbourne NP GDP

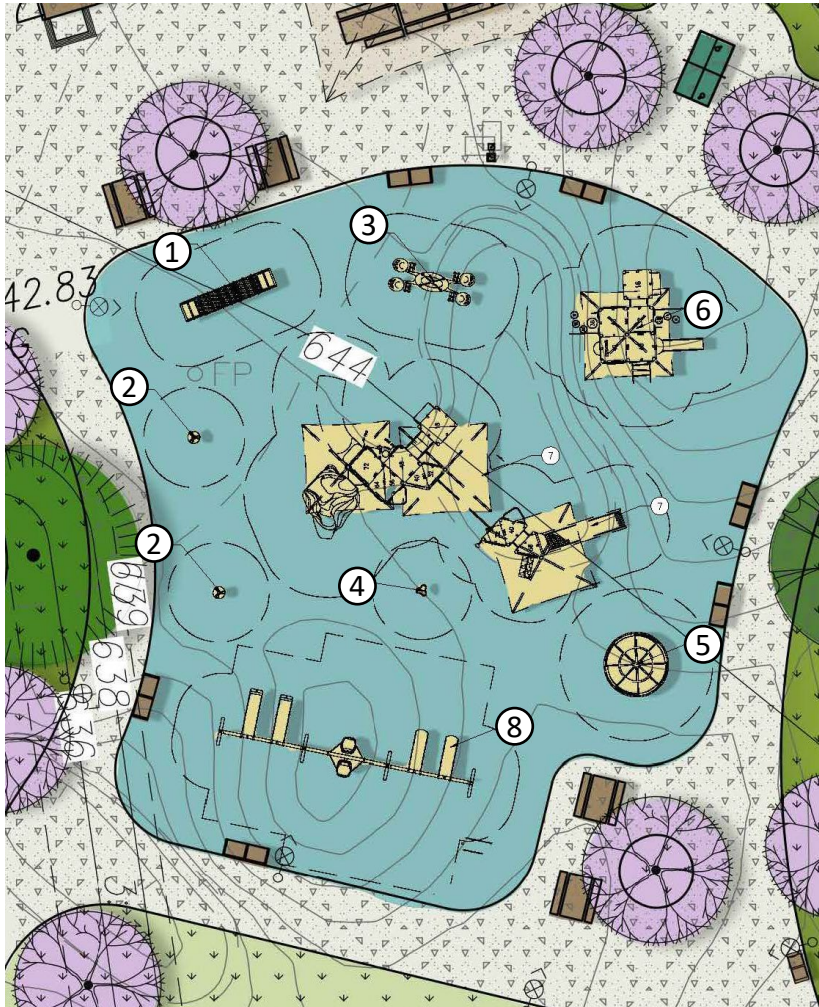


ITEMS:

- ① MULTI-PURPOSE TURF AREA
- ② NATIVE PLANTING
- ③ CONCRETE PAVING
- ④ RUBBERIZED SURFACING
- ⑤ PLAY AREA WITH SHADE
- ⑥ COMFORT STATION
- ⑦ BENCHES
- ⑧ PICNIC TABLES
- ⑨ GAME TABLES
- ⑩ CONCRETE PING PONG TABLE
- ⑪ TRASH RECEPTACLES
- ⑫ BBQ UNITS
- ⑬ DRINKING FOUNTAIN
- ⑭ BIKE RACKS
- ⑮ DOG WASTE STATION
- ⑯ ENTRY SIGN
- ⑰ 35' SHADE STRUCTURE
- ⑱ CHAIN LINK FENCING
- ⑲ PEELER LOG FENCING
- ⑳ SECURITY LIGHTING
- ㉑ DUMPSTER ENCLOSURE



Play Area Enlargement



- ① 176457 - ROLLER TABLE
- ② 247179 - CURVA SPINNER DB ONLY
- ③ 186490 - WE - SAW
- ④ 152179 - SADDLE SPINNER 16" SEAT HEIGHT
- ⑤ 249558 - WE-GO-AROUND W/ NATURE DIGFUSE PANELS 2 SEAT DB ONLY
- ⑥ PLAYBOOSTER (2-5 YEAR) MAX FALL HEIGHT: 54 INCH
- ⑦ PLAYBOOSTER (5-12 YEAR) MAX FALL HEIGHT: 96 INCH
- ⑧ SWIGS WITH:
 - 1. 176038 - FULL BUCKET SEAT W/PROGUARD CHAINS 8' BEAM HEIGHT
 - 2. 221293 - 5" ARCH SWING ADDITIONAL BAY
 - 3. 237294 - FRIENDSHIP SWING W/ 5" ARCH FRAME ADDITIONAL BAY PROGUARD CHAINS
 - 4. 221292 - 5" ARCH SWING
 - 5. 174018 BELT SEAT W/PROGUARD CHAINS 8' BEAM HEIGHT

⑦

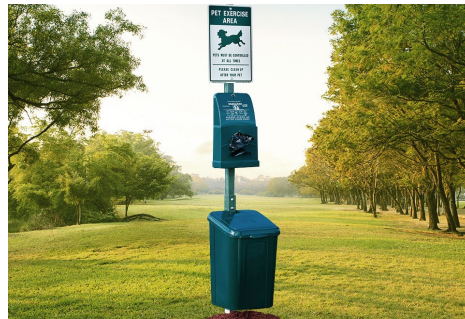


Play Area Rendering





Design Elements





Proposed Plant Materials

ACCENT TREES



CERCIDIUM FLORIDUM
"BLUE PALO VERDE"



CERCIS OCCIDENTALIS
"WESTERN REDBUD"

SCREENING TREES



SAMBUCUS MEXICANA
"BLUE ELDERBERRY"



PRUNUS LYONII
"CATALINA CHERRY"

SHADE TREES



CALOCEDRUS DECURRENS
"INCENSE CEDAR"



PLATANUS RACEMOSA
"CALIFORNIA SYCAMORE"



QUERCUS KELLOGGII
"CALIFORNIA BLACK OAK"



QUERCUS AGRIFOLIA
"COAST LIVE OAK"

RIPARIAN TREES



PRUNUS ILICIFOLIA
"HOLLYLEAF CHERRY"



SAMBUCUS MEXICANA
"BLUE ELDERBERRY"



Proposed Plant Materials

NATURALIZED AREAS



ARTEMESIA CALIFORNICA
"CALIFORNIA SAGEBRUSH"



COMAROSTAPHYLIS DIVERSIFOLIA
"SUMMER HOLLY"



ENCELIA FARINOSA
"BRITTLEBUSH"



ERIOGONUM PARVIFOLIUM
"COASTAL BUCKWHEAT"



HETEROMELES ARBUTIFOLIA
"TOYON"



LUPINUS BICOLOR
"MINIATURE LUPINE"



QUERCUS DUMOSA
"NUTTALL'S SCRUB OAK"



RHAMNUS CALIFORNICA
"COFFEEBERRY"



RHUS OVATA
"SUGAR BUSH"



SALVIA APIANA
"WHITE SAGE"



YUCCA WHIPPLEI
"FOOTHILL YUCCA"

Item 103 Shoal Creek Neighborhood Park

- The approval of Shoal Creek Neighborhood Park will provide an additional 3.38 acres and 147 Recreation Value Points of population-based recreational opportunities.



Limits of the proposed Shoal Creek Neighborhood Park

Shoal Creek NP GDP



ITEMS:

- ① TURF
- ② NATIVE PLANTING
- ③ CONCRETE PAVING
- ④ AC PAVING
- ⑤ RUBBERIZED SURFACING
- ⑥ PLAY AREA WITH SHADE
- ⑦ COMFORT STATION
- ⑧ BENCHES
- ⑨ PICNIC TABLES
- ⑩ GAME TABLES
- ⑪ CONCRETE PING PONG TABLE
- ⑫ TRASH RECEPTACLES
- ⑬ BBQ UNITS
- ⑭ DRINKING FOUNTAIN
- ⑮ BIKE RACKS
- ⑯ DOG WASTE STATION
- ⑰ ENTRY SIGN
- ⑱ 35' SHADE STRUCTURE
- ⑲ 15'X30' SHADE SHELTER
- ⑳ FITNESS EQUIPMENT
- ㉑ PEELER LOG FENCE
- ㉒ SECURITY LIGHTING



Play Area Enlargement



- ① 295695 - REVIWHEEL SPINNER DB ONLY
- ② 194663 - ZIPKROOZ 50'
- ③ 186490 - WE - SAW
- ④ HENDRA (2-5 YEAR) MAX FALL HEIGHT: 96 INCH
- ⑤ HENDRA (5-12 YEAR) MAX FALL HEIGHT: 105 INCH
- ⑥ SWIGS WITH:
 - 1. 176038 - FULL BUCKET SEAT W/PROGUARD CHAINS 8' BEAM HEIGHT
 - 2. 278557 - HENDRA SWING DB ONLY
 - 3. 281067 - HENDRA SWING SPACER SET



Play Area Rendering



Item 104 Walden Neighborhood Park

- The approval of Walden Neighborhood Park will provide an additional 1.9 acres and 98 Recreation Value Points of population-based recreational opportunities.



Limits of the Proposed
Walden Neighborhood
Park



Walden NP GDP



ITEMS:

- ① TURF
- ② NATIVE PLANTING
- ③ CONCRETE PAVING
- ④ RUBBERIZED SURFACING
- ⑤ PLAY AREA WITH SHADE
- ⑥ BENCHES
- ⑦ PICNIC TABLES
- ⑧ TRASH RECEPTACLES
- ⑨ BBQ UNITS
- ⑩ DRINKING FOUNTAIN
- ⑪ BIKE RACKS
- ⑫ DOG WASTE STATION
- ⑬ ENTRY SIGN
- ⑭ SHADE STRUCTURE
- ⑮ SECURITY LIGHTING



Play Area Enlargement



- ① 177336 - TODDLER SWING DB ONLY
- ② PLAYBOOSTER (2-5 YEAR) MAX FALL HEIGHT: 79 INCH
- ③ PLAYBOOSTER (5-12 YEAR) MAX FALL HEIGHT: 96 INCH



Play Area Rendering





Department Recommendations

- Recommend approval of the proposed General Development Plans for Eastbourne, Shoal Creek, and Walden Neighborhood Parks

Item 102 Eastbourne NP



Item 103 Shoal Creek NP



Item 104 Walden NP

