



THE CITY OF SAN DIEGO

M E M O R A N D U M

DATE: May 31, 2023

TO: Honorable Council President Sean Elo-Rivera and Members of the City Council

FROM: Andy Field, Director, Parks and Recreation Department
Via Kristina Peralta, Deputy Chief Operating Officer

SUBJECT: Trust for Public Land - ParkScore for City of San Diego

Each year, the Trust for Public Land (TPL) (<https://www.tpl.org>) conducts a survey to compare the 100 largest municipal park systems across the country. The Parks and Recreation Department responds on behalf of the City of San Diego annually. For 2023, the City's ParkScore is 24th in the country with a score of 60.9 points. This represents an improvement from the 2022 ParkScore, which was 29th in the country with a score of 59.8 points.

This score, which is detailed at <https://www.tpl.org/city/san-diego-california> and in the attachment, is based on key factors including:

- Access
- Acreage
- Amenities
- Equity
- Investment

Attachment 1 outlines the methodology used by TPL and the measures used to calculate the score for each of the five factors.

In 2021, the City Council adopted the new Parks Master Plan (see <https://www.sandiego.gov/parks-for-all-of-us>), which provides recommendations and goals to build a park system for all of us. Many of the measures listed within the TPL's five key factors are addressed in the recommendations, especially a focus on building equity in San Diego's Park System.

Some key findings include:

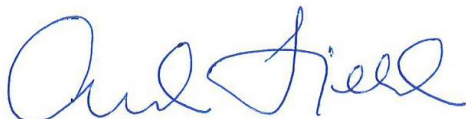
- For the 2023 reporting period, the City has 552 parks.

- The City has numerous recreational amenities, many of which are provided in the TPL ParkScore, including:
 - 44 basketball hoops per 100,000 people
 - 1.6 dog off leash areas per 100,000 people
 - 24 playgrounds per 100,000 people
 - 14 restrooms per 100,000 people
 - 5 recreation, senior, and community centers per 100,000 people
 - 0.3 splashpads per 100,000 people
- 81% of San Diego residents live within a 10-minute walk of a park.
- Residents in low-income neighborhoods have access to 63% less park space per person than those in the average San Diego neighborhood and 85% less than those in high-income neighborhoods.
- Residents in neighborhoods of color have access to 39% less park space per person than the city's average neighborhood and 73% less than those in white neighborhoods.

Attachment 2 contains details of the City of San Diego ParkScore, and Attachment 3 provides a list of the 100 municipalities with their ParkScore ranked.

Thank you for your continued support of the City of San Diego Park System. If you have questions or would like to discuss further, please contact me at afield@sandiego.gov or (619) 235-1110.

Sincerely,



Andy Field
Director
Parks and Recreation Department

Attachments:

1. ParkScore Methodology
2. City of San Diego ParkScore
3. List of the 100 municipalities sorted by ParkScore

ATTACHMENT 1 – ParkScore Methodology

Reference: <https://www.tpl.org/parkscore/about>

Scoring:

To determine a city’s ParkScore rating, the Trust for Public Lands (TPL) assigns points for 14 measures across five categories:

- Access
- Acreage
- Amenities
- Equity
- Investment

For each of the 14 measures, points are awarded on a relative basis, based on how a city compares to the 100 largest U.S. cities. Points are assigned by breaking the data range established by our national sample into brackets, with the lowest bracket receiving the least points and the highest bracket receiving the most points.

Each city’s total points—out of a maximum of 500—are normalized to a ParkScore rating of up to 100.

Access:

The ParkScore index awards each city up to 100 points for access based on the percentage of the population living within a 10-minute (half-mile) walk of a public park. For each park, a 10-minute walkable service area was created using a nationwide walkable road network dataset provided by Esri. The analysis identifies physical barriers such as highways, train tracks, and rivers without bridges and chooses routes without barriers.

Using these 10-minute walkable service areas, overall access statistics are generated for each place, and then further disaggregated by several demographic variables – race/ethnicity, age, and income.

All calculated population statistics are based on 2022 US Census Block Group estimates provided by Esri.

Acreage:

The ParkScore index awards each city up to 100 points for acreage based on the average of two equally weighted measures: median park size and parkland as a percentage of city area. Factoring park acreage into each city’s ParkScore rating helps account for the importance of larger “destination parks” that serve many users who live farther than ten minutes’ walking distance.

Median park size is calculated using park inventories acquired from park-owning agencies within each city.

Parkland as a percentage of city area is calculated using data collected in an annual survey we conduct. We remove unpopulated railyard and airport areas as well as major bodies of water from the baseline city land area.

Amenities:

The ParkScore index awards each city up to 100 points for the availability of six key park amenities on a per capita basis. These are:

- Basketball hoops
- Off-leash dog parks
- Playgrounds
- Recreation and senior centers
- Restrooms
- Splashpads and spraygrounds

These six amenities were chosen because they are among the most popular in parks around the country. They represent a diverse selection of user groups (kids, teenagers, adults, seniors), serve all activity levels and desires, and are able to be accurately and fairly compared across all agencies.

Equity:

The ParkScore index awards each city up to 100 points for equity based on the average of four equally weighted measures that compare the availability of nearby park space between neighborhoods within a city:

- On a per person basis, ratio of nearby public park space between neighborhoods of color and white neighborhoods
- On a per person basis, ratio of nearby public park space between low-income neighborhoods and high-income neighborhoods
- Percentage of people of color living within a 10-minute (half-mile) walk of a public park
- Percentage of low-income households living within a 10-minute (half-mile) walk of a public park

Nearby park space per person measures the available park space within a 10-minute walk of a micro-neighborhood (census block group, which is about 1,000 people), identified as those with the highest concentrations of people of color or white population and high-income or low-income households. The scoring ratio is calculated by comparing the median park space per person value, which helps account for outliers. The equity measures are designed to award points based on how well a city's park resources are distributed, regardless of the city's overall park acreage or access.

The metrics for people and neighborhoods of color reflect each of the Census-designated race/ethnicity groups: Black, Hispanic, Indigenous and Native American, Asian American, Pacific Islander, multiple races, and other communities of color. All population statistics are based on US Census Block Group estimates provided by Esri.

Investment:

The ParkScore index awards each city up to 100 points for investment in its park system based on total spending per resident. To minimize the effect of annual fluctuations this is reported as a three-year average based on the most recently finalized fiscal year and the two prior. This figure is a sum of the following:

- **Public spending:** This includes capital and operational spending by all public agencies that own or manage parkland within the city limits, including federal, state, and county agencies. These figures only reflect agency spending on parks and recreation, however, and do not reflect the significant spending in other capacities that some park agencies are responsible for throughout their cities.
- **Nonprofit spending:** This includes all spending by parks nonprofits, conservancies, foundations, and “friends of” groups that work locally to improve a city’s parks. This information is collected through an annual survey of these groups and through filed Forms 990.
- **Volunteer hours:** This includes both hours worked for any public parks and recreation agency as well as through the above non-profit organizations. These hours are then monetized according to the Independent Sector’s Value of Volunteer Time report, using the dollars per hour value for each state.

Outliers:

To prevent outliers from skewing the results, the top bracket for each measure includes all values equal to more than double the median of the data range. To control distortion from local anomalies, all cities that score more than double the median value are assigned to the highest bracket.

With the top bracket thus defined, the parameters for the remaining brackets are established so that each bracket comprises an equal portion of the remaining data range.

This protocol applies to all measures except those based on the 10-minute walk analysis (Access category and two of the four equity measures), which have no outliers because they range from 0 to 100.

Park Inclusion Criteria:

In order to accurately represent park access across large communities, open public access is the key criteria for inclusion in our database. We include a wide variety of parks, trails, and open space, so long as there is no barrier to entry.

Examples of parks TPL includes:

- Publicly owned local, state, and national parks, trails, and open space
- School parks with a joint-use agreement with the local government
- Privately owned parks that are managed for full public use

Examples of parks TPL does not include:

- Parks in gated communities
- Private golf courses
- Private cemeteries
- School parks/playgrounds without active joint-use agreements
- Zoos, museums, professional sports stadiums

Across all five categories, including the new equity measures, large water bodies are generally excluded from any acreage calculations to better compare across the 100 cities.

2023 ParkScore Index®

24

60.9



San Diego, CA

The ParkScore index is a national comparison of park systems across the 100 most populated cities in the United States. Published annually, the index measures park systems according to five categories reflective of an excellent city park system: access, investment, amenities, acreage, and equity. While the rankings provide fodder for friendly competition, the goal each year of publishing the index is to help leaders advocate for needed park resources and provide relevant data to inform local park improvement efforts. To facilitate a fair comparison across cities, the index aggregates across all public and private organizations supporting parks in each city.

This year, San Diego received a score of 60.9 points out of 100 based on an average of the five categories. There are 14 measures across these categories, with points awarded based on how San Diego compares to the other 99 cities for that particular measure.

80

out of 100
points**Acreage**

The acreage score indicates the relative abundance of large 'destination' parks, which include large natural areas that provide critical mental health as well as climate and conservation benefits. There are two components to the acreage score. Of these, San Diego scores among the highest on the percentage of the city's overall area that is dedicated to parkland (99 out of 100 points), and above average on median park size (61 out of 100 points).

72

out of 100
points**Access**

The access score indicates the percentage of a city's residents that live within a walkable half-mile of a park - the average distance that most people are willing to walk to reach a destination. With 81% of its population living this close to a park, San Diego scores above average in this category.

69

out of 100
points**Investment**

The investment score indicates the relative financial health of a city's park system, which is essential to ensuring the park system is maintained at a high level. This value aggregates park and recreation spending across all agencies and organizations within the city, including monetized volunteer hours. In San Diego, a total of \$157 per capita is spent each year on publicly accessible parks and recreation, above average for this category.

44

out of 100
points**Amenities**

The amenities score indicates the relative abundance of six park activities popular among a diverse selection of user groups (kids, teenagers, adults, seniors). Overall for this category, San Diego scores about average, though it varies by amenity: basketball hoops (52 points out of 100), dog parks (61 points), playgrounds (32 points), senior and rec centers (64 points), permanent restrooms (44 points), and splashpads (8 points).

40

out of 100
points**Equity**

The equity score indicates the fairness in the distribution of parks and park space between neighborhoods by race and income. This category is an average of two types of metrics. On the first set of measures, San Diego scores above average: 72 out of 100 points for people of color living within a 10-minute walk of a park and 73 points for low-income households. The second set of measures compare the distribution of park space. In San Diego, residents living in neighborhoods of color have access to 73% less nearby park space than those living in white neighborhoods (13 points out of 100). Residents living in lower-income neighborhoods have access to 85% less nearby park space than those in higher-income neighborhoods (1 points out of 100).

For additional information on the scoring methodology, please visit www.tpl.org/parkscore/about

2023 Rank

Points



2023 ParkScore Index®

24

60.9

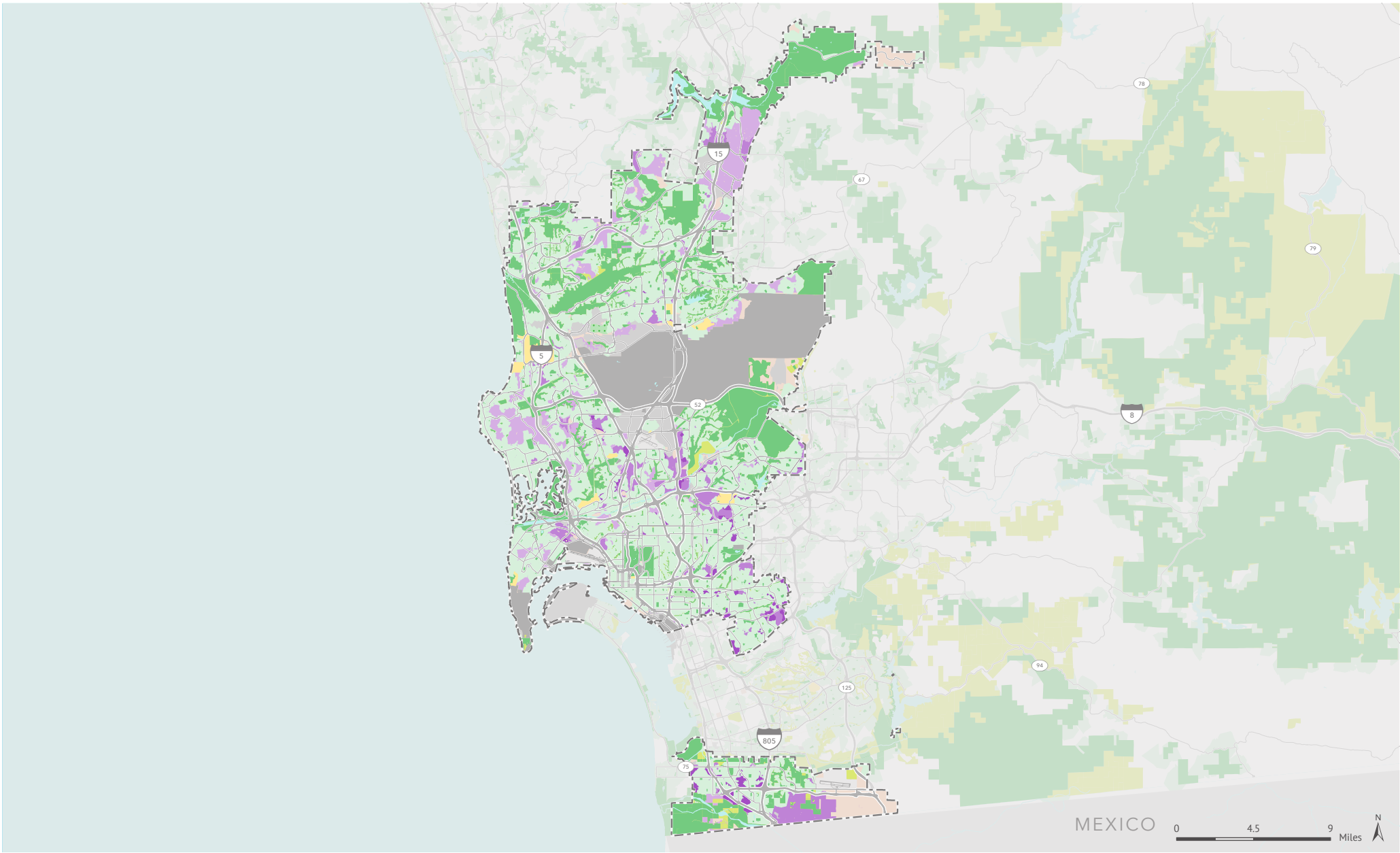
San Diego, CA

Values for San Diego, CA:

'Per capita' value needed to achieve*:

	City-wide total	City-wide 'per capita'	City-wide score*	1 pt	100 pts
Acreage (80 Points)					
Parkland as a percentage of city area	40,122 <i>acres</i>	19.4% <i>of city area</i>	99 <i>points</i>	1.7%	19.5%
Median Park Size	6.8 <i>acres</i>	6.8 <i>acres</i>	61 <i>points</i>	.6	10.8
Access (72 Points)					
Percent of population within a 10-minute walk of a park with public access		81%	72 <i>points</i>	35%	100%
Equity (40 Points)					
Percent of people of color within a 10-minute walk of a park		82%	72 <i>points</i>	38%	100%
Percent of low-income households within a 10-minute walk of a park		84%	73 <i>points</i>	43%	100%
Residents in neighborhoods of color have _____ park space as those in white neighborhoods		73% less	13 <i>points</i>	91% less	47% more
Low-income neighborhoods have _____ park space as those in high-income neighborhoods		85% less	1 <i>points</i>	86% less	40% more
Investment (69 Points)					
Annual park investment (three-year average)	\$218,440,217	\$ 157 <i>per resident</i>	69 <i>points</i>	\$28	\$216
Amenities (44 Points)					
Basketball hoops	617 <i>hoops</i>	4.42 <i>per 10,000 residents</i>	52 <i>points</i>	.94	7.70
Dog parks	23 <i>dog parks</i>	1.65 <i>per 100,000 residents</i>	61 <i>points</i>	.27	2.55
Playgrounds	338 <i>playgrounds</i>	2.42 <i>per 10,000 residents</i>	32 <i>points</i>	.98	5.56
Senior/Rec centers	73 <i>centers</i>	1.05 <i>per 20,000 residents</i>	64 <i>points</i>	.21	1.52
Restrooms	190 <i>restrooms</i>	1.36 <i>per 10,000 residents</i>	44 <i>points</i>	.13	2.93
Splashpads	4 <i>splashpads</i>	0.29 <i>per 100,000 residents</i>	8 <i>points</i>	.10	2.64

*For each of the 14 measures, cities are scored on a 1-100 scale (100 is the highest) based on how they compare to the other 99 cities. To adjust for outliers, 100 points is awarded for any city that has more than double the national median for that measure.



2023 ParkScore® index: Access

SAN DIEGO, CALIFORNIA

The Access category of the ParkScore® index awards points based on the percentage of the population within a 10-minute walk of a public park. This analysis is provided via the ParkServe mapping application, which identifies the population living within a 10-minute walk of a park by creating dynamic 1/2-mile service areas (10-minute walking distance) for all public parks. In this analysis, service areas use the street network to determine walkable distance (streets such as highways, freeways, and interstates are considered barriers).

In San Diego, 81% of the population lives within a 10-minute walk of a park. Among the remaining 257,832 people without access to a nearby park, Trust for Public Land suggests where to prioritize the development of new parks to reduce this gap. This prioritization is based on a comprehensive index of six equally-weighted demographic and environmental

metrics:

- Population density*
 - Density of low income households (households with income less than 75% of the urban area median income; less than \$50,000 in San Diego)*
 - Density of people of color*
 - Community health (a combined index based on the rate of poor mental health and low physical activity from the 2022 CDC PLACES census tract dataset)
 - Urban heat islands (surface temperature at least 1.25 degrees greater than city mean surface temperature from Trust for Public Land, based on Landsat 8 satellite imagery)
 - Pollution burden (air toxics respiratory hazard index from 2022 EPA EJScreen)
- *Based on 2022 Forecast block groups provided by ESRI

Priority areas for new parks
(outside of 10-minute walk service areas of parks with public access)

- Very high priority
- High priority
- Moderate priority
- Park with public access
- Other park or open space
- 10-minute walk (half-mile) service area of park with public access

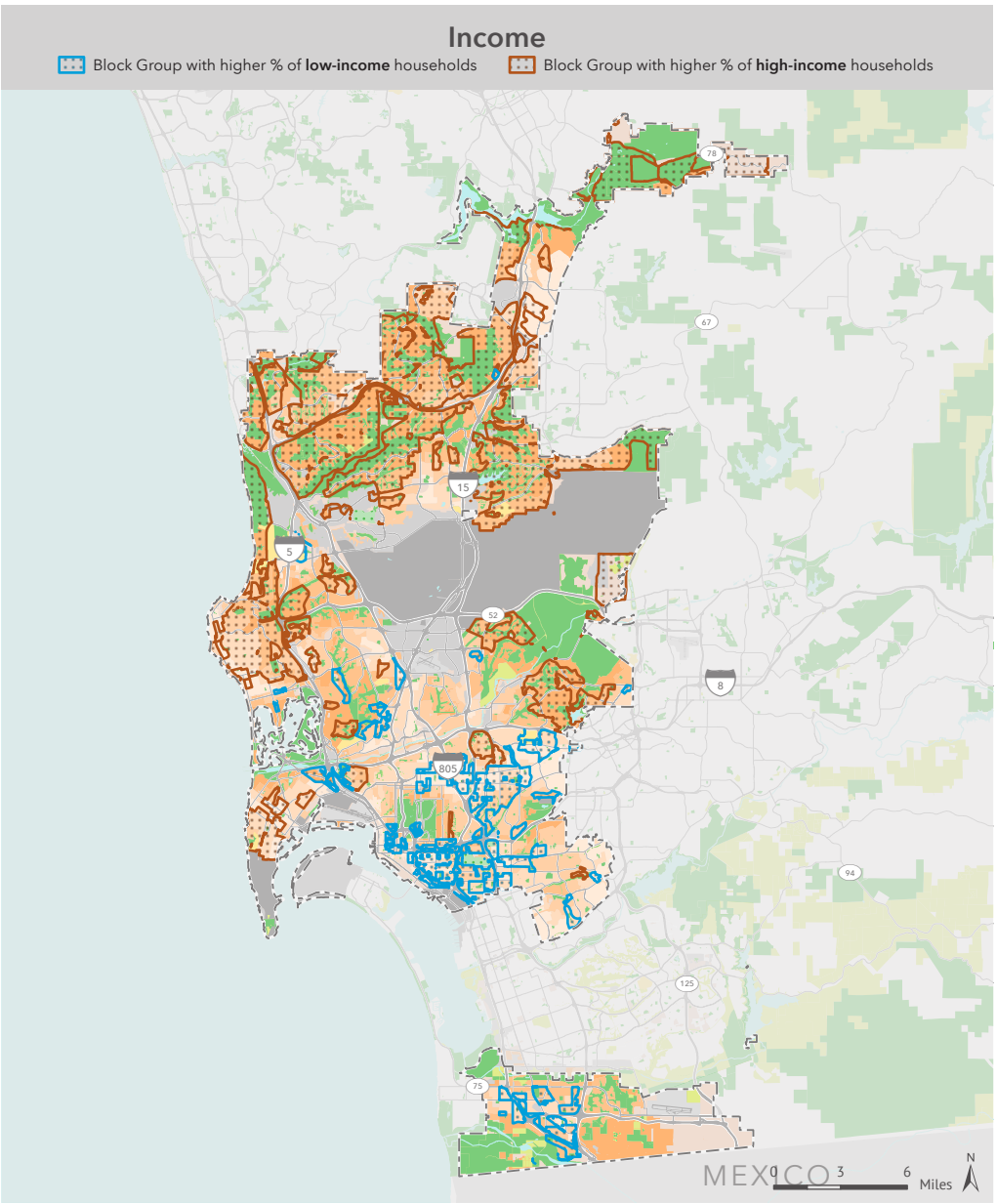
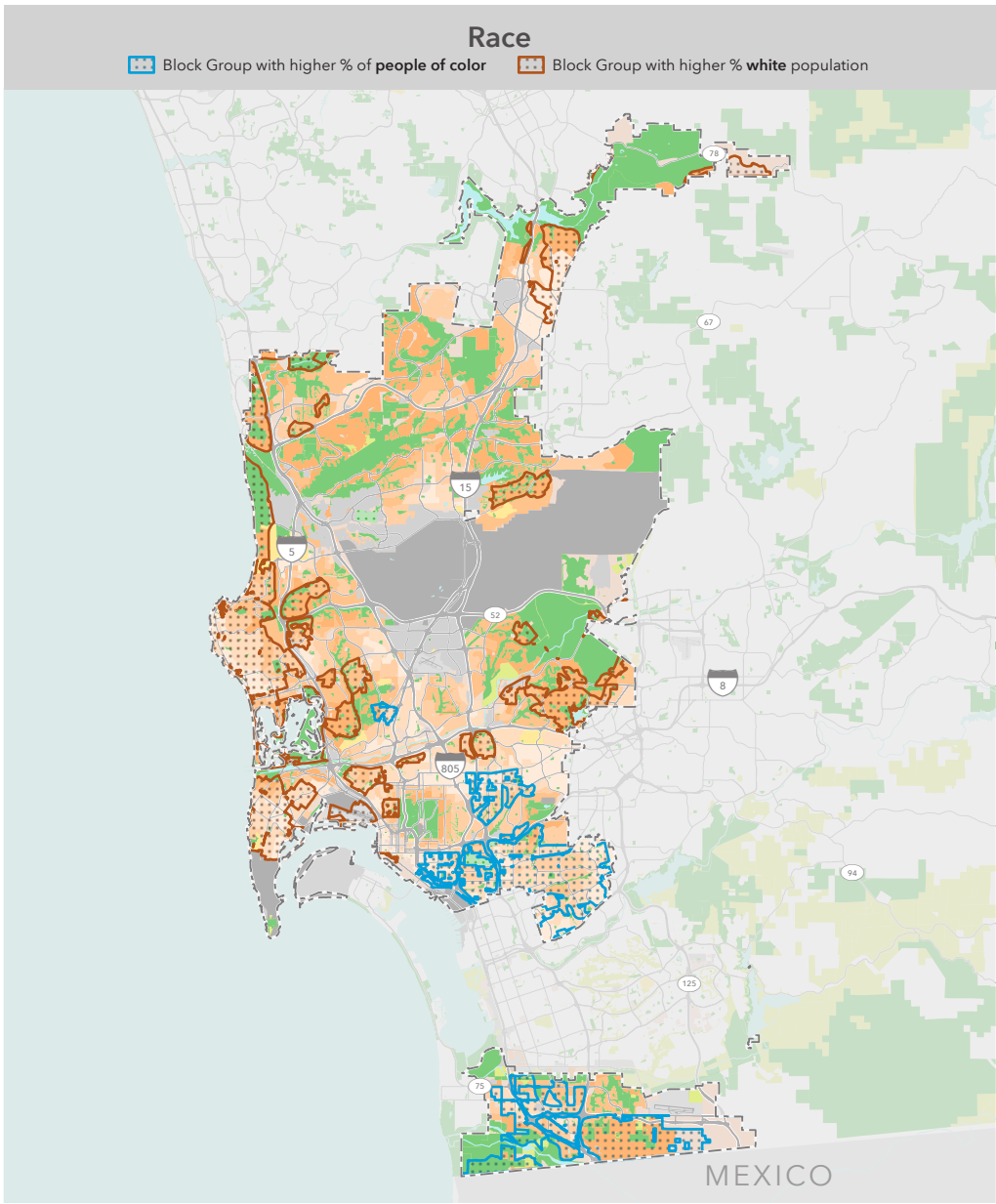
Land Use Categories:

- Cemetery
- University
- Military
- Industrial
- Vacant zero population area

Boundaries:

- City boundary
- County boundary

Special thanks to the following data providers: San Diego, Esri, OSM, CDC, EPA. Information on this map is provided for purposes of discussion and visualization only. Map created by Trust for Public Land on April 10, 2023. Trust for Public Land and Trust for Public Land logo are federally registered marks of Trust for Public Land. Copyright © 2023 Trust for Public Land. www.tpl.org



2023 ParkScore® index: Equity

SAN DIEGO, CALIFORNIA

The Equity category of the ParkScore® index awards points in part based on the difference in nearby park space between neighborhoods in a city:

- On a per person basis, ratio of nearby public park space between communities of color and white communities
- On a per person basis, ratio of nearby public park space between low-income communities and high-income communities

Nearby park space per person effectively measures the available park space within a 10-minute walk of a micro-neighborhood, identified as those with the highest concentrations (top 20% of all census block groups in a city) of people of color or white population and high-income or low-income households. Households with income less than 75% of city median income (less

than \$50,000 in San Diego) are considered low-income; households with income greater than 125% of city median income (greater than \$100,000 in San Diego) are high-income.

In San Diego, neighborhoods of color have 73% less park space than white neighborhoods, and low-income neighborhoods have 85% less than high-income neighborhoods.

The metrics for people of color reflect each of the Census-designated race/ethnicity groups: Black, Hispanic, and Indigenous and Native American, Asian Americans, Pacific Islanders, multiple races, and other communities of color.

Demographic profiles are based on 2020 Forecast block groups provided by Esri.

 Park with public access	 City boundary
 Other park or open space	 County boundary
 Cemetery	Park acres per person
 University	 Very high
 Military	 High
 Industrial	 Moderate
 Vacant zero population area	 Low
	 Very low

Special thanks to the following data providers: San Diego, Esri, OSM, CDC, EPA. Information on this map is provided for purposes of discussion and visualization only. Map created by Trust for Public Land on April 13, 2023. Trust for Public Land and Trust for Public Land logo are federally registered marks of Trust for Public Land. Copyright © 2023 Trust for Public Land. www.tpl.org

ATTACHMENT 3

Top 100 List - ParkScore

	<u>Place Name</u>	<u>Access</u>	<u>Acreage</u>	<u>Amenities</u>	<u>Equity</u>	<u>Investment</u>	<u>Total</u>
1	Washington, DC	99.00	54.50	84.83	86.25	100.00	84.90
2	St. Paul, MN	99.00	51.00	82.67	71.25	100.00	80.80
3	Minneapolis, MN	98.00	61.50	83.00	59.25	100.00	80.40
4	Irvine, CA	91.00	77.00	65.67	66.50	100.00	80.00
5	Arlington, VA	99.00	35.50	89.83	70.25	100.00	78.90
6	Cincinnati, OH	82.00	59.00	93.83	68.50	81.00	76.90
7	San Francisco, CA	100.00	53.50	65.50	62.75	100.00	76.40
8	Seattle, WA	98.00	53.00	46.17	76.25	100.00	74.70
9	Portland, OR	85.00	66.00	63.00	54.50	100.00	73.70
10	New York, NY	99.00	52.00	47.67	73.75	91.00	72.70
11	Boston, MA	100.00	48.50	58.33	77.75	79.00	72.70
12	Chicago, IL	98.00	32.00	63.83	89.25	80.00	72.60
13	Madison, WI	93.00	54.50	72.67	72.50	54.00	69.30
14	Denver, CO	89.00	51.00	62.00	69.25	75.00	69.30
15	St. Petersburg, FL	65.00	47.50	71.83	77.00	84.00	69.10
16	Plano, TX	70.00	73.50	47.67	59.75	89.00	68.00
17	Pittsburgh, PA	88.00	42.50	91.00	60.00	57.00	67.70
18	Spokane, WA	78.00	46.00	60.33	48.75	87.00	64.00
19	Henderson, NV	62.00	42.50	73.67	60.50	81.00	63.90
20	Milwaukee, WI	87.00	40.00	70.83	53.50	61.00	62.50
21	Fremont, CA	59.00	81.50	45.17	55.50	68.00	61.80
22	Boise, ID	54.00	51.00	79.50	36.25	86.00	61.40
23	Albuquerque, NM	86.00	61.50	56.00	61.00	41.00	61.10
24	St. Louis, MO	96.00	31.50	60.50	71.50	45.00	60.90
25	San Diego, CA	72.00	80.00	43.50	39.75	69.00	60.90
26	Cleveland, OH	74.00	31.50	59.83	71.25	66.00	60.50
27	Kansas City, MO	52.00	73.00	44.33	79.75	52.00	60.20
28	Atlanta, GA	66.00	25.00	63.67	47.50	97.00	59.80
29	Baltimore, MD	81.00	24.50	44.67	82.50	61.00	58.70
30	Sacramento, CA	76.00	49.00	67.50	49.00	50.00	58.30
31	Philadelphia, PA	93.00	44.00	59.17	67.00	28.00	58.20
32	San Jose, CA	70.00	51.00	33.17	69.75	65.00	57.80
33	New Orleans, LA	70.00	56.00	35.33	51.50	76.00	57.80
34	Lincoln, NE	85.00	45.50	52.33	71.00	32.00	57.20
35	Buffalo, NY	86.00	24.00	69.33	64.25	39.00	56.50
36	Miami, FL	82.00	25.00	62.83	58.50	53.00	56.30
37	North Las Vegas, NV	38.00	82.00	39.17	66.00	54.00	55.80
38	Honolulu, HI	58.00	70.00	42.67	59.25	49.00	55.80
39	Richmond, VA	70.00	35.50	50.50	84.25	38.00	55.70
40	Toledo, OH	73.00	37.00	31.83	88.50	44.00	54.90
41	Austin, TX	54.00	56.50	35.83	40.25	84.00	54.10
42	Aurora, CO	81.00	57.00	16.33	51.00	64.00	53.90
43	Tampa, FL	46.00	33.50	79.00	67.50	40.00	53.20
44	Dallas, TX	59.00	58.00	29.67	68.50	51.00	53.20
45	Jersey City, NJ	97.00	29.00	44.83	78.00	15.00	52.80
46	Omaha, NE	72.00	58.00	56.00	54.25	23.00	52.70
47	Santa Clarita, CA	26.00	73.50	37.83	25.25	100.00	52.50
48	Las Vegas, NV	60.00	47.50	81.67	52.50	20.00	52.30
49	Virginia Beach, VA	51.00	63.50	44.67	43.00	59.00	52.20
50	Oakland, CA	83.00	44.00	44.67	48.50	40.00	52.00
51	Colorado Springs, CO	67.00	54.00	35.17	59.50	42.00	51.50
52	Norfolk, VA	66.00	19.50	77.50	79.00	15.00	51.40
53	Raleigh, NC	20.00	57.50	62.00	33.25	81.00	50.80
54	Tulsa, OK	46.00	59.00	47.33	72.75	25.00	50.00

	<u>Place Name</u>	<u>Access</u>	<u>Acreage</u>	<u>Amenities</u>	<u>Equity</u>	<u>Investment</u>	<u>Total</u>
55	Anchorage, AK	63.00	70.00	35.67	48.75	32.00	49.90
56	Columbus, OH	55.00	58.50	38.50	58.00	38.00	49.60
57	San Antonio, TX	25.00	70.50	55.67	49.25	47.00	49.50
58	Newark, NJ	91.00	14.00	36.67	93.50	12.00	49.40
59	Long Beach, CA	74.00	32.50	50.67	38.75	51.00	49.40
60	Detroit, MI	75.00	20.50	49.17	71.50	26.00	48.40
61	Scottsdale, AZ	8.00	100.00	48.17	19.25	61.00	47.30
62	Baton Rouge, LA	26.00	21.00	76.17	44.25	69.00	47.30
63	Chesapeake, VA	17.00	82.50	60.83	38.25	37.00	47.10
64	Orlando, FL	49.00	24.50	48.33	41.25	66.00	45.80
65	Lexington/Fayette, KY	42.00	52.50	49.17	58.75	24.00	45.30
66	Wichita, KS	27.00	57.50	46.00	67.25	28.00	45.20
67	El Paso, TX	41.00	58.50	48.83	56.50	13.00	43.60
68	Anaheim, CA	50.00	74.00	24.67	22.50	46.00	43.40
69	Corpus Christi, TX	62.00	28.00	43.17	49.25	27.00	41.90
70	Reno, NV	63.00	31.00	54.17	44.75	16.00	41.80
71	Houston, TX	40.00	51.00	35.83	43.25	36.00	41.20
72	Riverside, CA	25.00	67.00	49.50	39.25	22.00	40.60
73	Chandler, AZ	42.00	43.50	37.83	55.25	24.00	40.50
74	Laredo, TX	27.00	23.00	73.00	65.00	14.00	40.40
75	Arlington, TX	39.00	65.00	25.83	27.25	45.00	40.30
76	Tucson, AZ	44.00	35.50	49.67	57.50	15.00	40.30
77	Chula Vista, CA	58.00	48.00	48.50	37.25	8.00	40.00
78	Stockton, CA	63.00	30.50	38.33	65.00	1.00	39.60
79	Memphis, TN	16.00	58.50	35.33	36.00	49.00	39.00
80	Los Angeles, CA	44.00	51.50	24.17	32.75	41.00	38.70
81	Jacksonville, FL	1.00	70.50	65.83	28.50	27.00	38.60
82	Glendale, AZ	61.00	30.00	34.33	47.75	20.00	38.60
83	Winston-Salem, NC	3.00	56.00	58.17	53.50	22.00	38.50
84	Greensboro, NC	44.00	46.00	37.00	38.75	25.00	38.20
85	Phoenix, AZ	22.00	88.50	19.00	23.50	35.00	37.60
86	Charlotte/Mecklenburg, NC	5.00	64.50	35.17	39.50	44.00	37.60
87	Garland, TX	44.00	62.00	13.17	25.75	41.00	37.20
88	Fort Worth, TX	41.00	51.50	12.17	46.75	31.00	36.50
89	Durham, NC	23.00	44.00	49.00	36.25	27.00	35.90
90	Santa Ana, CA	60.00	31.50	16.00	35.75	33.00	35.30
91	Bakersfield, CA	17.00	52.00	51.17	18.50	38.00	35.30
92	Louisville, KY	4.00	54.00	57.67	28.50	29.00	34.60
93	Nashville/Davidson, TN	16.00	70.00	34.83	42.50	9.00	34.50
94	Hialeah, FL	51.00	19.50	49.00	39.00	13.00	34.30
95	Oklahoma City, OK	11.00	31.00	34.00	59.75	35.00	34.20
96	Mesa, AZ	47.00	14.50	17.17	45.00	41.00	32.90
97	Lubbock, TX	28.00	47.00	29.67	45.50	13.00	32.60
98	Fresno, CA	48.00	16.50	37.83	39.50	18.00	32.00
99	Irving, TX	41.00	23.50	27.67	27.50	29.00	29.70
100	Gilbert, AZ	16.00	36.00	14.67	49.50	32.00	29.60