



Mission Gorge Park

City of San Diego Park Recreation Board Meeting

January 21, 2021



SCHMIDT
DESIGN
GROUP



- Introductions
- Site Description
- General Development Plan Public Outreach Process
- Presentation of General Development Plan
- Discussion & Action

INTRODUCTIONS

City of San Diego Planning Department Contact

- Scott Sandel, Park Planner

Park Developer, Palmer Mission Gorge Properties, LP

- Darrel Malamut, Senior VP of Development

Park Designers, Schmidt Design Group, Inc. (SDG)

- Glen Schmidt, Design Principal
- Jeff Justus, Principal
- Lindsay DeCeault, Project Manager

PROJECT LOCATION



Santo Rd.

Existing Commercial

10 Minute Pedestrian Walk

Admiral Baker Golf Course

Project Site

5 Minute Pedestrian Walk

Princess View Dr.

I 15

Existing Multi-Family (Verge Apartments)

San Diego River

Mission Gorge Rd.

Old Cliffs Rd.

Allied Gardens Little League

Lewis Middle School

Allied Gardens Recreation Center & Community Park

Allied Gardens Pool

Allied Gardens / Benjamin Branch Library

Stephen C. Foster Elementary School

Vons / Rite Aid Retail Center

Zion Ave.

Kaiser Permanente Zion Medical Center

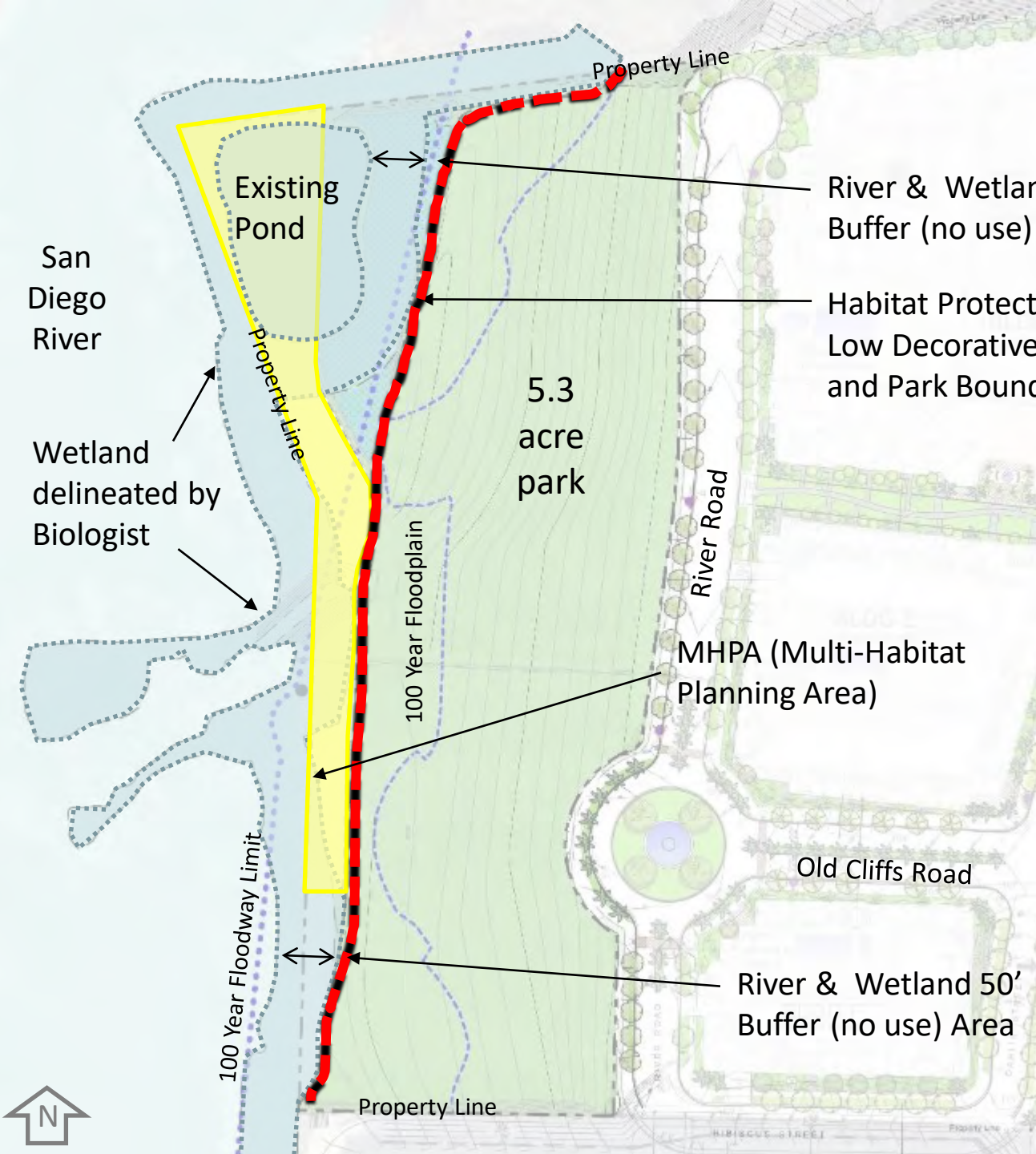
Waring Rd.

Friars Rd.



SITE ANALYSIS

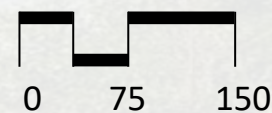
Wetland and Habitat Protection



Least Bell's Vireo

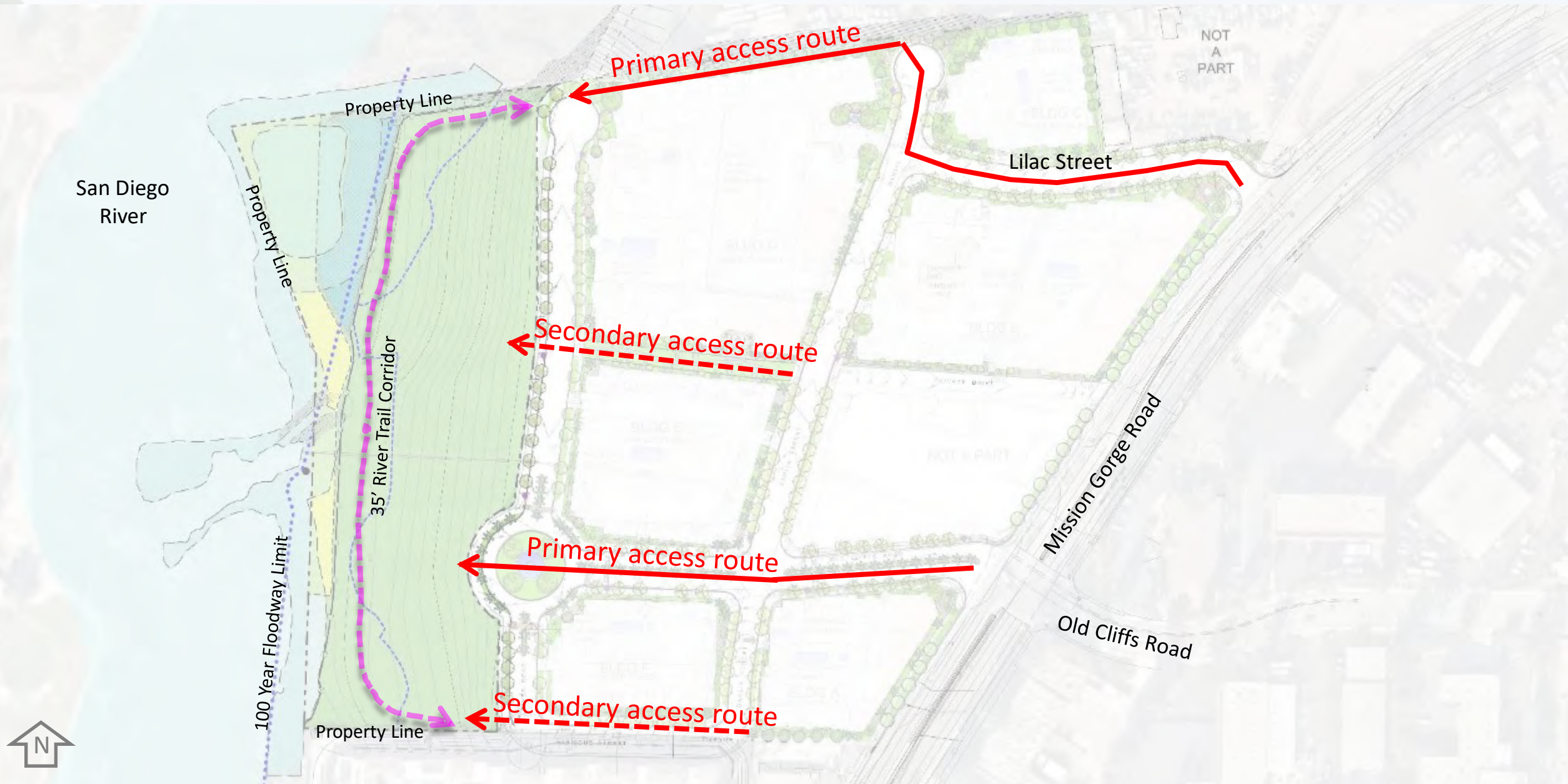
Sensitive Vegetation Communities

- Southern Willow Scrub
- Diegan Coastal Sage Scrub



SITE ANALYSIS

Park Access Points, and View Corridors



General Development Plan (GDP) Public Outreach

Allied Gardens Community Recreation Group (CRG)

- CRG Meeting #1 August 3, 2020
 - Introduction and Park Visioning
- CRG Meeting #2 October 5, 2020
 - Schematic Design Concepts
 - Stakeholder Discussion and Feedback
- CRG Meeting #3 November 9, 2020
 - Draft GDP presentation
 - Stakeholder Discussion and Feedback
- CRG Meeting #4 November 23, 2020
 - Approval of Draft GDP

Park and Recreation Board Approval

- Final GDP presentation and request for approval, January 21, 2021



August 3, 2020 Workshop 1

Allied Gardens Community Recreation Group (CRG)

- Reviewed site opportunities and constraints
- Polled and received feedback on park character and potential amenities
- High priorities from participants included: multi-purpose turf, dog park, parking, children's playground, restroom, shade, connection to nature, connection to the San Diego River, and natural habitat.

October 5, 2020 Workshop 2

Allied Gardens Community Recreation Group (CRG)

- Reviewed feedback from previous workshop
- Presented two alternatives with the following amenities:
 - Multi-purpose turf
 - Dog Park
 - Children's Play Area
 - Courts for Tennis and Pickleball
 - Picnic Areas
 - Walking Trails including San Diego River Trail
 - Fitness Nodes
 - Seating, Viewpoints/Overlooks and Interpretive Education
 - Informal Amphitheater Area
 - Bocce Court (one alternative)



November 9, 2020 Workshop 3

Allied Gardens Community Recreation Group (CRG)



- Reviewed feedback from previous workshop
- Presented draft GDP design with positive feedback and some minor requests for modification.
- Some dog park advocates participating in the meeting requested that the dog park be significantly larger. A major increase in size was not supported by a majority of the CRG.

November 23, 2020 Workshop 4

Allied Gardens Community Recreation Group (CRG)



- Reviewed feedback from previous workshop
- Presented the draft GDP design (Note: based on community feedback from 11/9/20 meeting, the dog park portion of the design was enlarged by 4,800 square feet)
- The project was approved by the CRG

Draft General Development Plan

Mission Gorge Park
San Diego, CA



Design Inspiration



Mesas – Canyons – San Diego River



General Development Plan

SAN DIEGO RIVER
+66.9

SAN DIEGO RIVER
+66.9



LEGEND

- 1 Multi-Purpose Turf Area
- 2 Park Plaza with Picnic Area
- 3 Events Only Decomposed Granite Area for Portable Restrooms
- 4 Children's Play Area
- 5 Shade Sails
- 6 Turf Plateau
- 7 Bocce Courts
- 8 Tennis Court
- 9 Pickle Ball Courts
- 10 14' Wide San Diego River Trail
- 11 Overlook with Interpretive Signage, Typ.
- 12 Dry Creek Bed, Typ.
- 13 Benches, Typ.
- 14 Picnic Tables, Typ.
- 15 Fitness Node, Typ.
- 16 Potential River Trail Connection
- 17 Pedestrian Bridge, Typ.
- 18 Raised Planter, Typ.
- 19 Stairs
- 20 Biofiltration Basin
- 21 Dog Park
- 22 Fog Spray on Boulder
- 23 10' HT. Chainlink Fence at Courts
- 24 42' Chainlink Fence
- 25 42' Peeler Pole Fence at Park Boundary
- 26 3' HT. Tubular Steel Fence
- 27 5' HT. Tubular Steel Fence
- 28 8' HT. Navy Property Fence
- 29 Informal Amphitheater
- 30 3' Retaining Wall
- 31 Connection To Neighborhood Trail and Future River Trail
- 32 Monument Sign
- 33 Pedestrian Pole Light, Typ.
- 34 Bollard Lighting, Typ.
- 35 Tree Uplighting, Typ.
- 36 Proposed Spot Elevations and Grading, Typ.

PARKING
 Total Spaces Required 21
 (usable parkland 4.2 ac)
 Total Spaces Provided 22
 (Designated for park use only - West side of River Road)
 Additional Street Parking 21
 (Non-designated parking - East side of River Road)

CONSULTANT: **SCHMIDT DESIGN GROUP**

DATE: 1/25/2021
 PROJECT #: 25-4-1
 DRAWN BY: LD, CD

SCALE: 1" = 30'-0"

SHEET 1 OF 3

DATE	ACTION	REFERENCE DOCUMENT #	COPIES	ACROSS
2/10/21	SITE DESIGNATED	0000-0000	0000	0000
2/10/21	CD/CONV (SAY MIN)	0000-0000	0000	0000
2/10/21	PARL BOARD APPROVAL	0000-0000	0000	0000
2/10/21	INITIAL DEVELOPMENT	0000-0000	0000	0000

ITEM	QUANTITY	ITEM	QUANTITY	ITEM	QUANTITY	ITEM	QUANTITY
TOTAL SITE	5.3 AC	RECYCLED SURFACING	8,385 SF	PERMING	1,859 LF	INSTALLATION/PARKING LOTS	44
T.B.S.F.	1.10 AC	PLAYGROUND SAND	332 SF	MULTI-PURPOSE C11 PAVING	4,481 SF	BIKE RACKS	5
SMALL PLANTING	1.71 AC	MINI TREES/SHRUBS	17,812 PL	DOG PARK FENCING	800 LF	INFORMAL AMPHITHEATER	1
DOG PARKING	1.12 AC	MINI TREES/SHRUBS	21	DOG PARK FENCING	800 LF	DOG WASH STATION	3
DOG PARKING AT DOG PARK	1.42 AC	STREET PARKING STALLS ADA	1			PICNIC TABLES	11
OPEN TURF AT DOG PARK	1.11 AC					PICNIC TABLES	79
CONCRETE PAVING	1.80 AC					RECEPTACLES	12
						PARK FACILITY SIGN	1
						BOULDER	100
						REVISION	

CITY OF SAN DIEGO PARK AND RECREATION DEPARTMENT

THE GENERAL DEVELOPMENT PLAN

MISSION GORGE PARK

NEIGHBORHOOD PARK

WBS No. S-00752

LAURENT COORDINATES: XXX-XXXX THOMAS BROTHERS PACE

Parking Ratio for City of San Diego Neighborhood Parks:

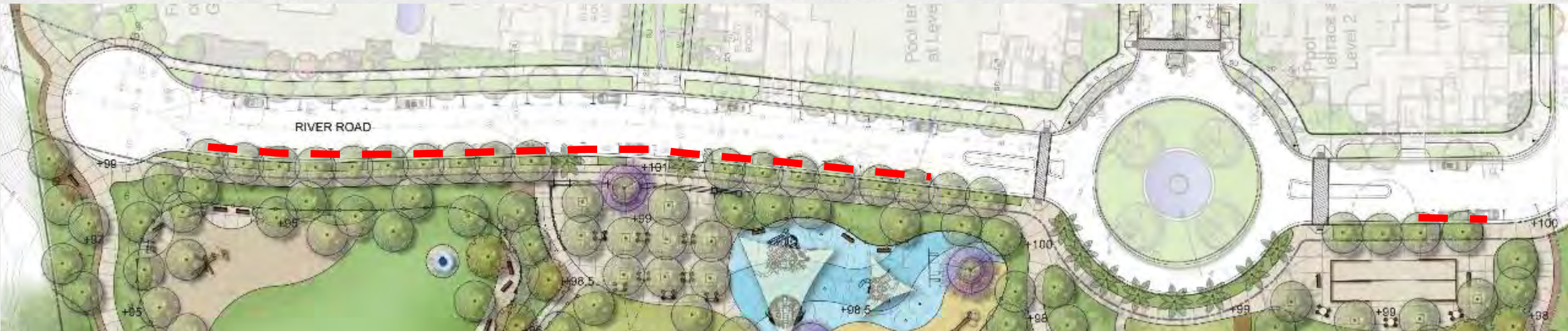
“Provide five (5) parking spaces per acre of usable passive parkland”
“Steep Slopes and Natural areas do not count towards usable parkland”.
San Diego Consultant’s Guide to Park Design and Development

4.2 Acres of ‘Usable parkland’

21 Parking spaces required

22 Parking spaces provided that are designated for park users (with time limit) on the park side of River Road

21 Additional public parking paces (not designated) on the east side of River Road



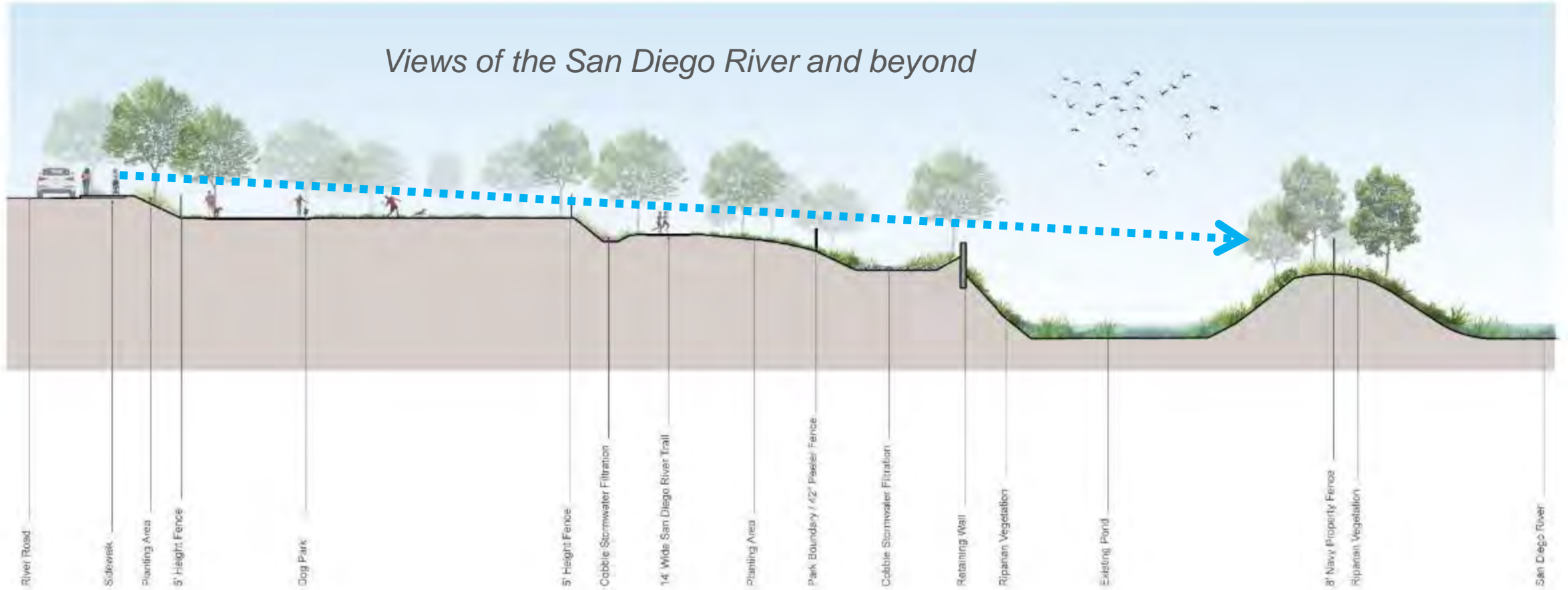
Off-Leash Dog Park



Dog Park Natural Character Elements



Views of the San Diego River and beyond



Scale - 1 Horizontal x 1.5 Vertical

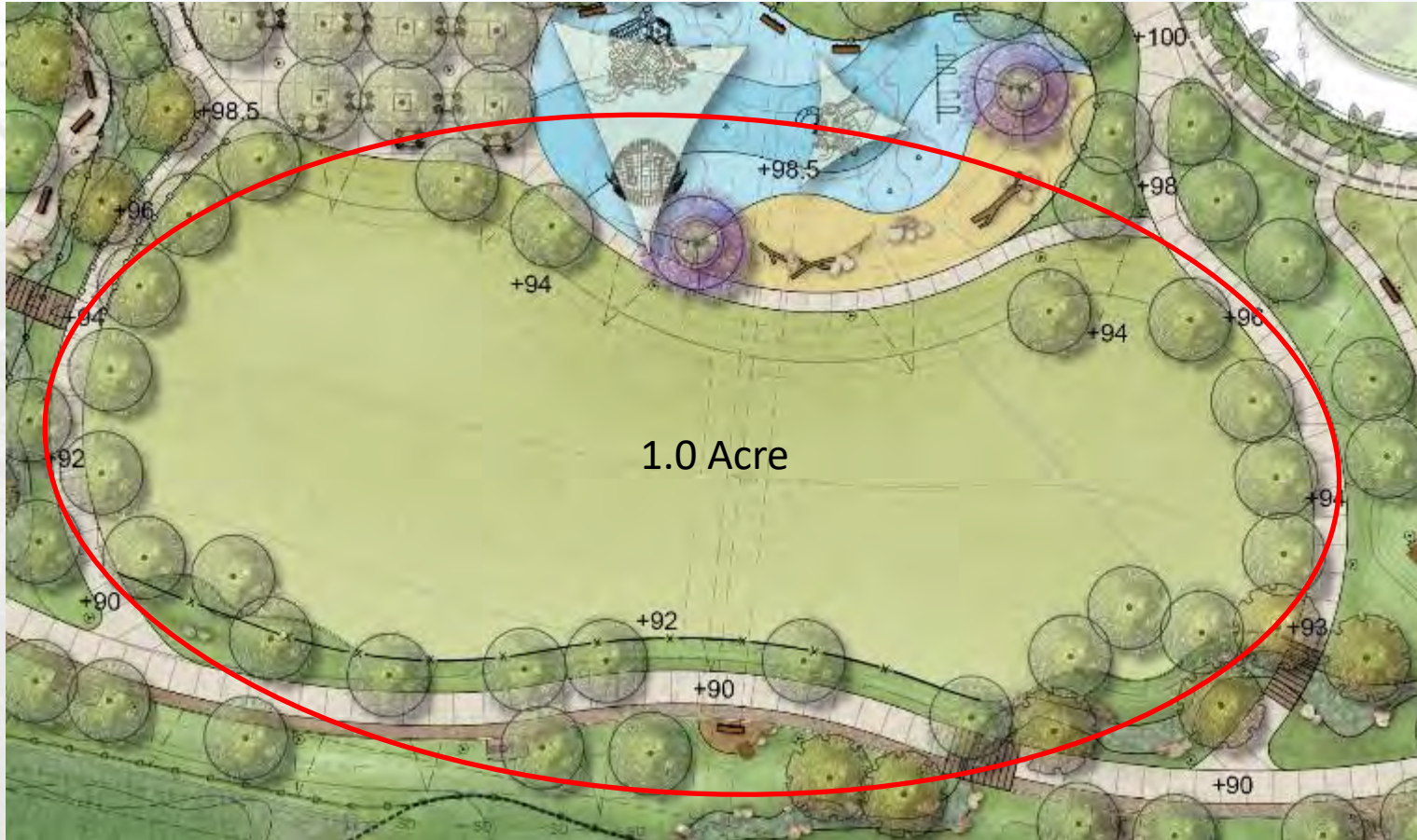
Section 1

Mission Gorge Park
San Diego, CA

Horizontal Scale: 1" = 30'-0"
Vertical Scale: 1" = 20'-0"

Project Number: 20-401
Date: November 5, 2020

Multipurpose Turf Area



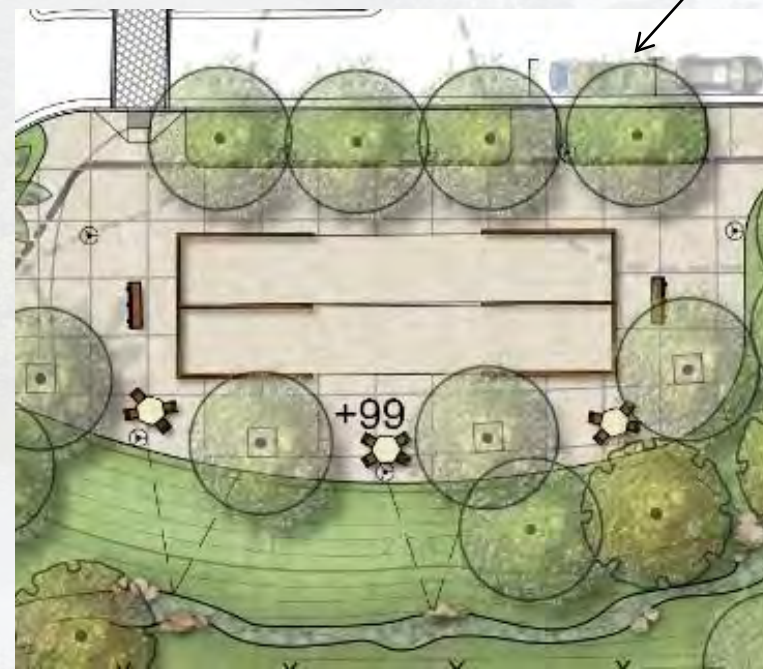
Also an informal amphitheater

Mesas - Canyons - San Diego River

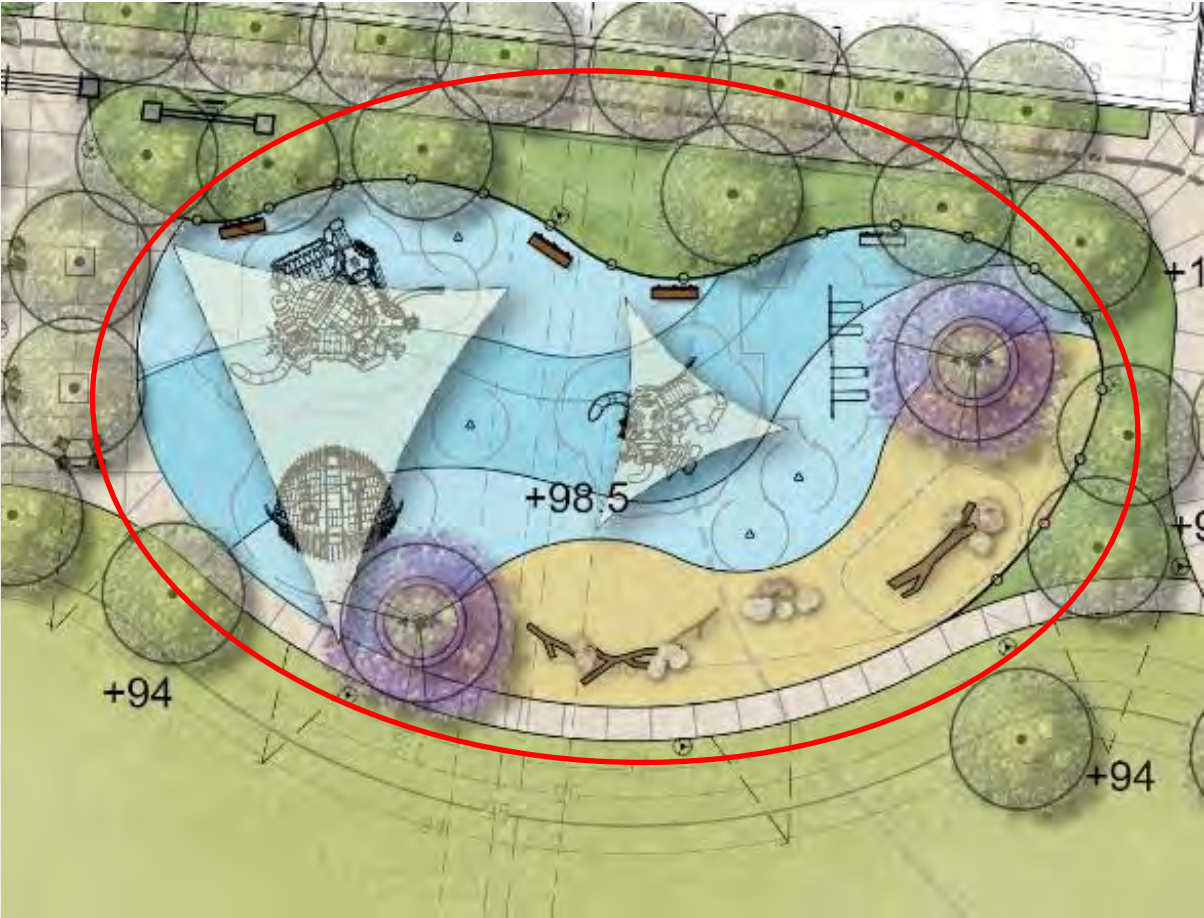
Picnic Areas



Special event portable location



Children's Play Area



Mesas – Canyons – San Diego River



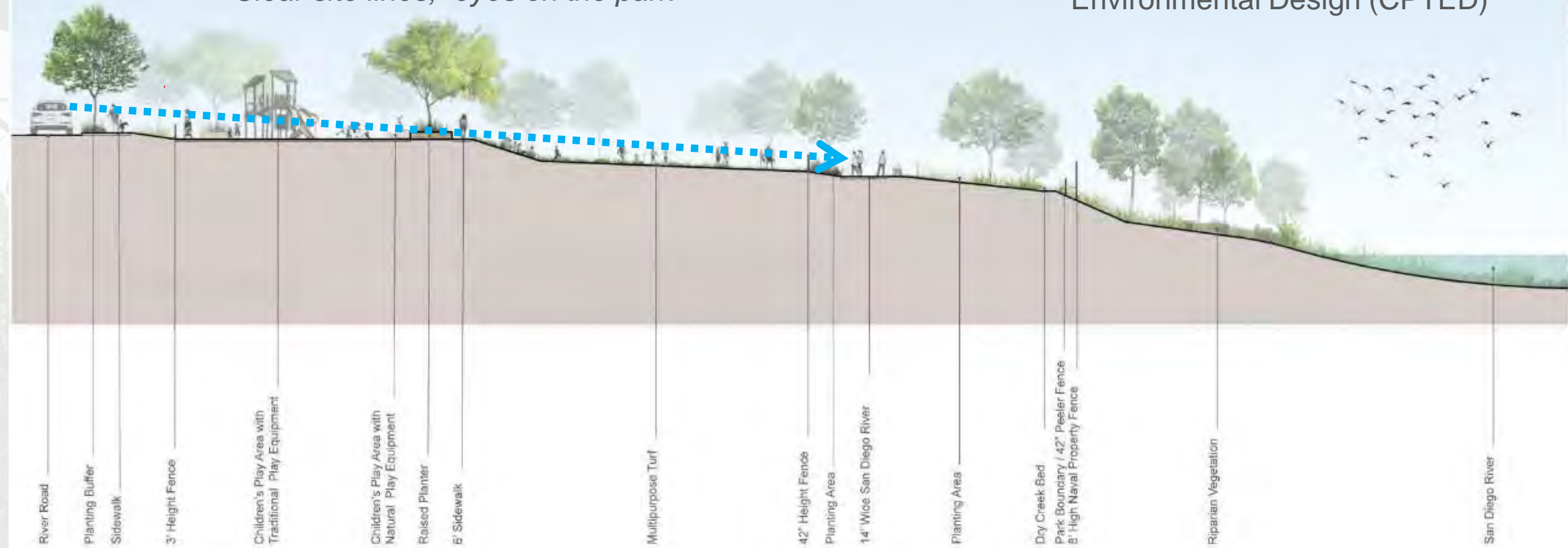
Natural Play Zone

Mesas – Canyons – San Diego River



Clear site lines, "eyes on the park"

Crime Prevention Through Environmental Design (CPTED)



Scale - 1 Horizontal x 1.5 Vertical

Section 2

Mission Gorge Park
San Diego, CA

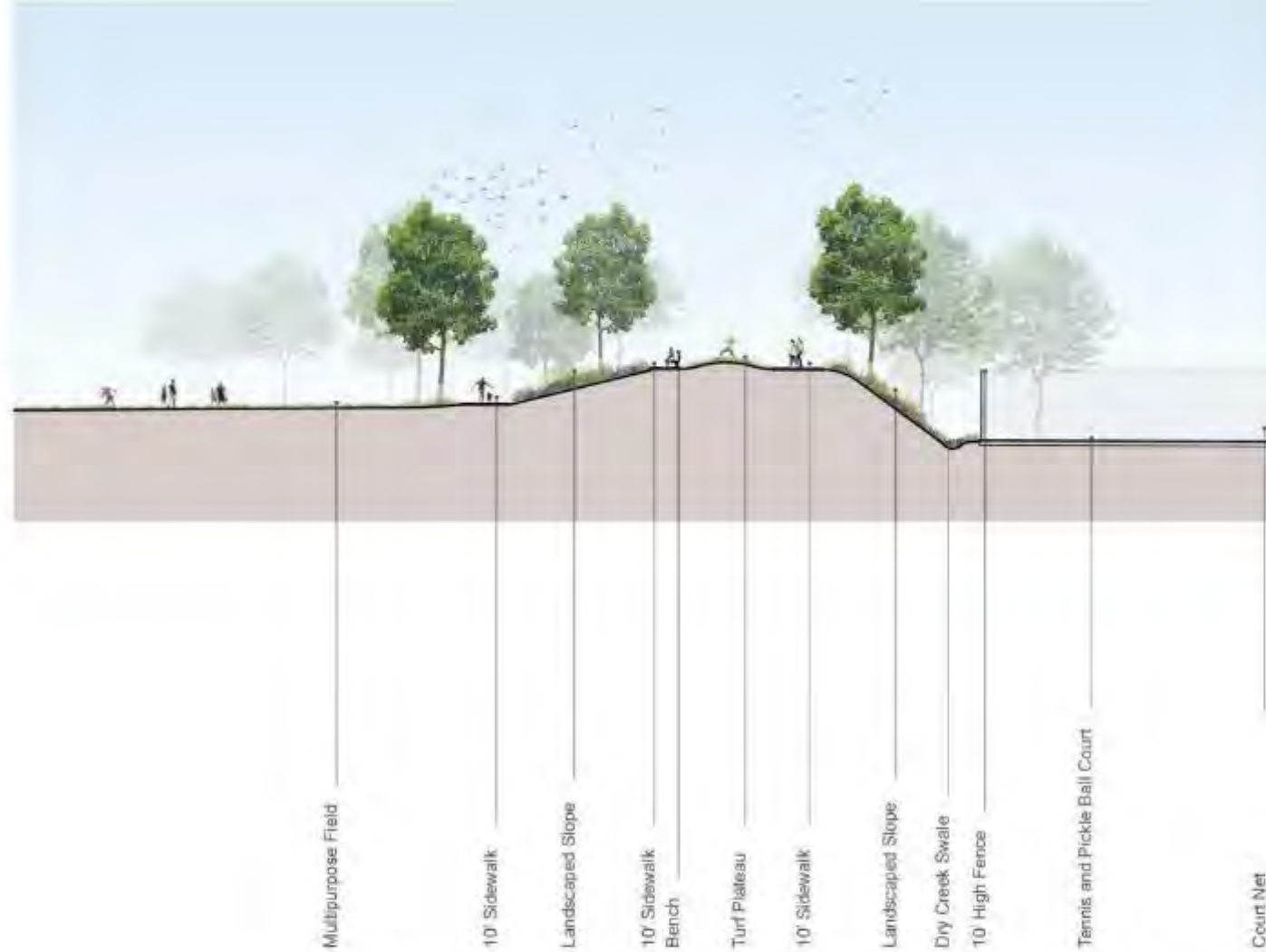
Horizontal Scale: 1" = 30'-0"
Vertical Scale: 1" = 20'-0"

Project Number: 20-401
Date: November 5, 2020

Turf Plateau and Dry Creek Beds



Mesas - Canyons - San Diego River



Scale - 1 Horizontal x 1.5 Vertical

Section 3

Mission Gorge Park
San Diego, CA

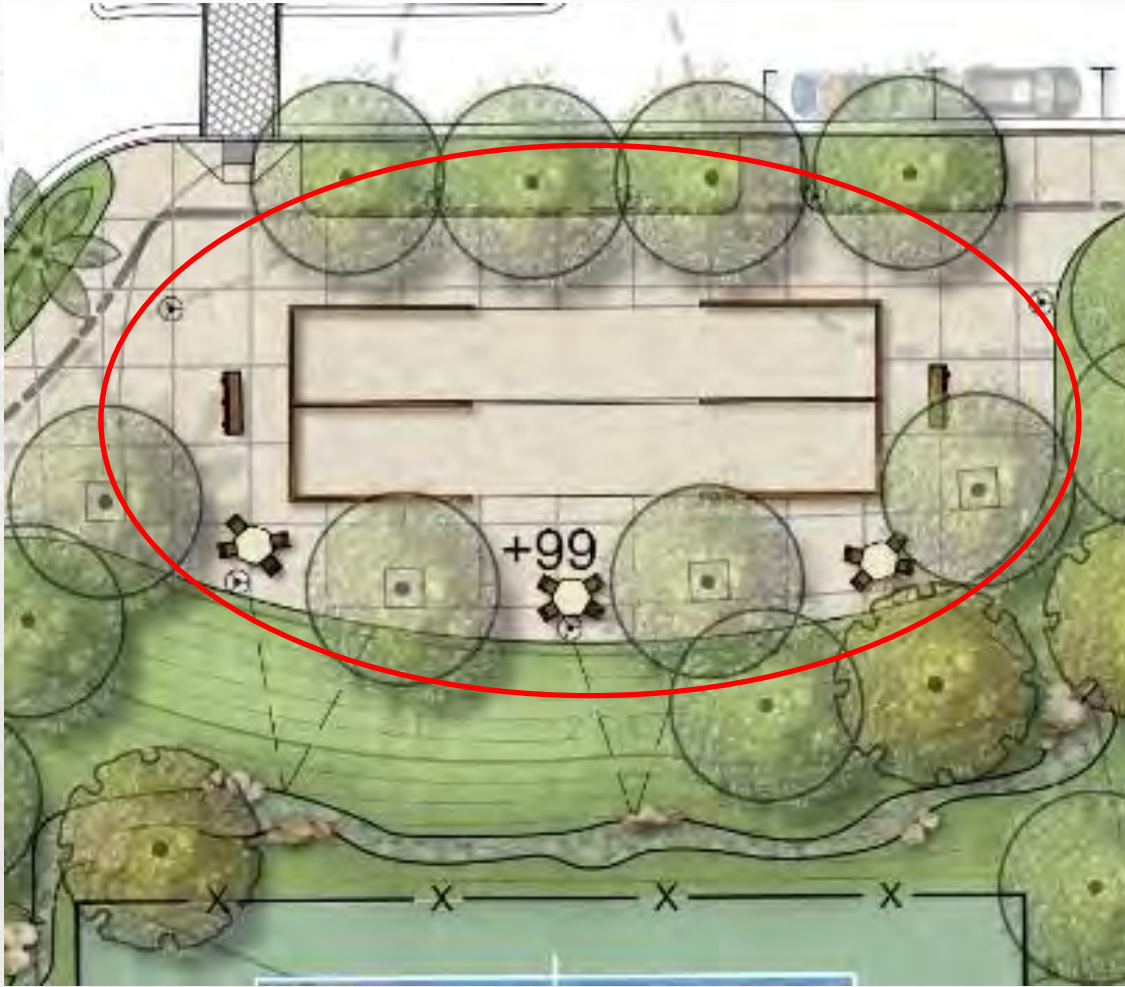
Horizontal Scale: 1" = 30'-0"
Vertical Scale: 1" = 20'-0"

Project Number: 20-401
Date: November 5, 2020



SCHMIDT
DESIGN
GROUP

Bocce Ball Courts and Picnic Overlook

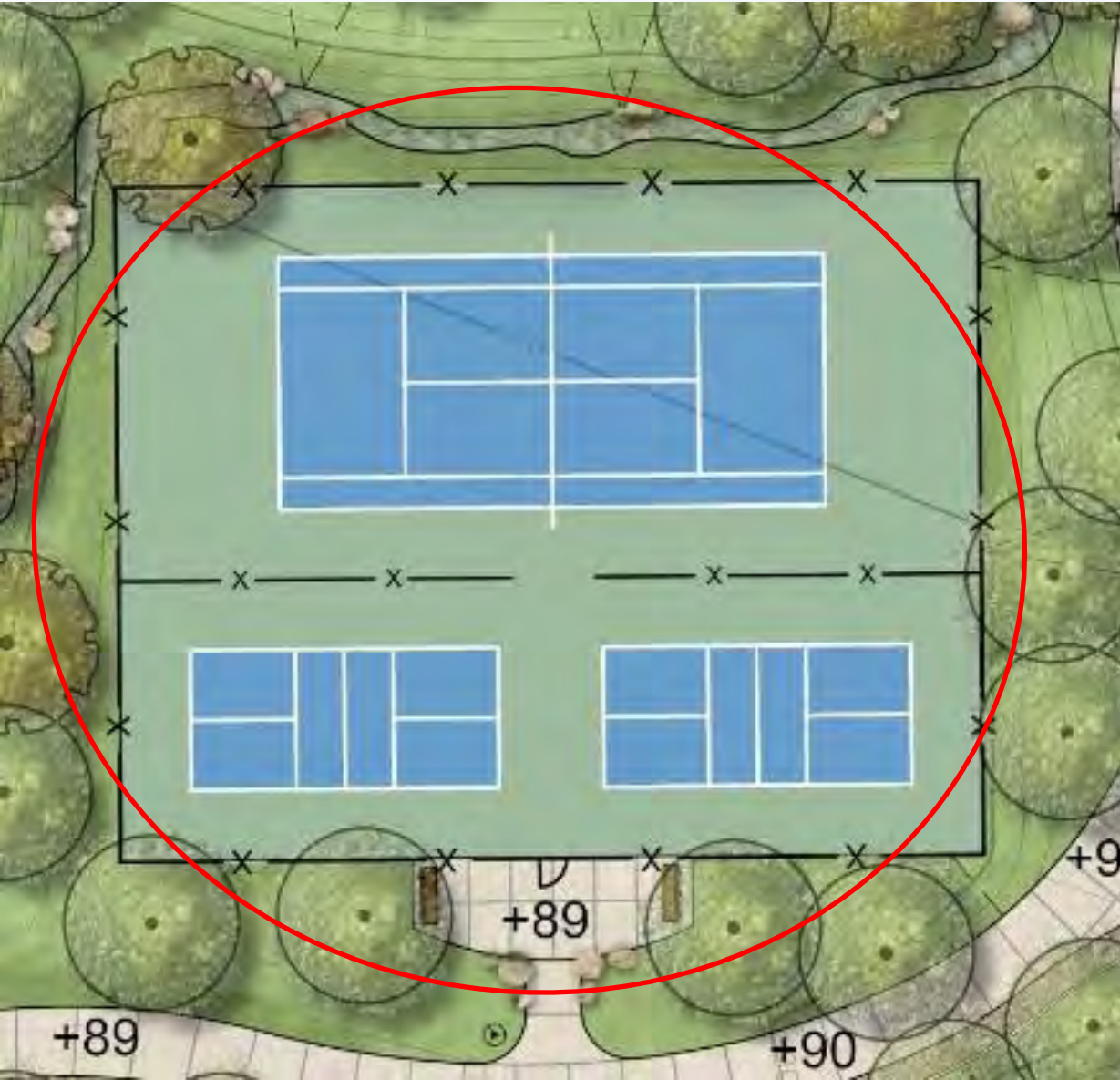


Mesas - Canyons - San Diego River

Multipurpose Courts

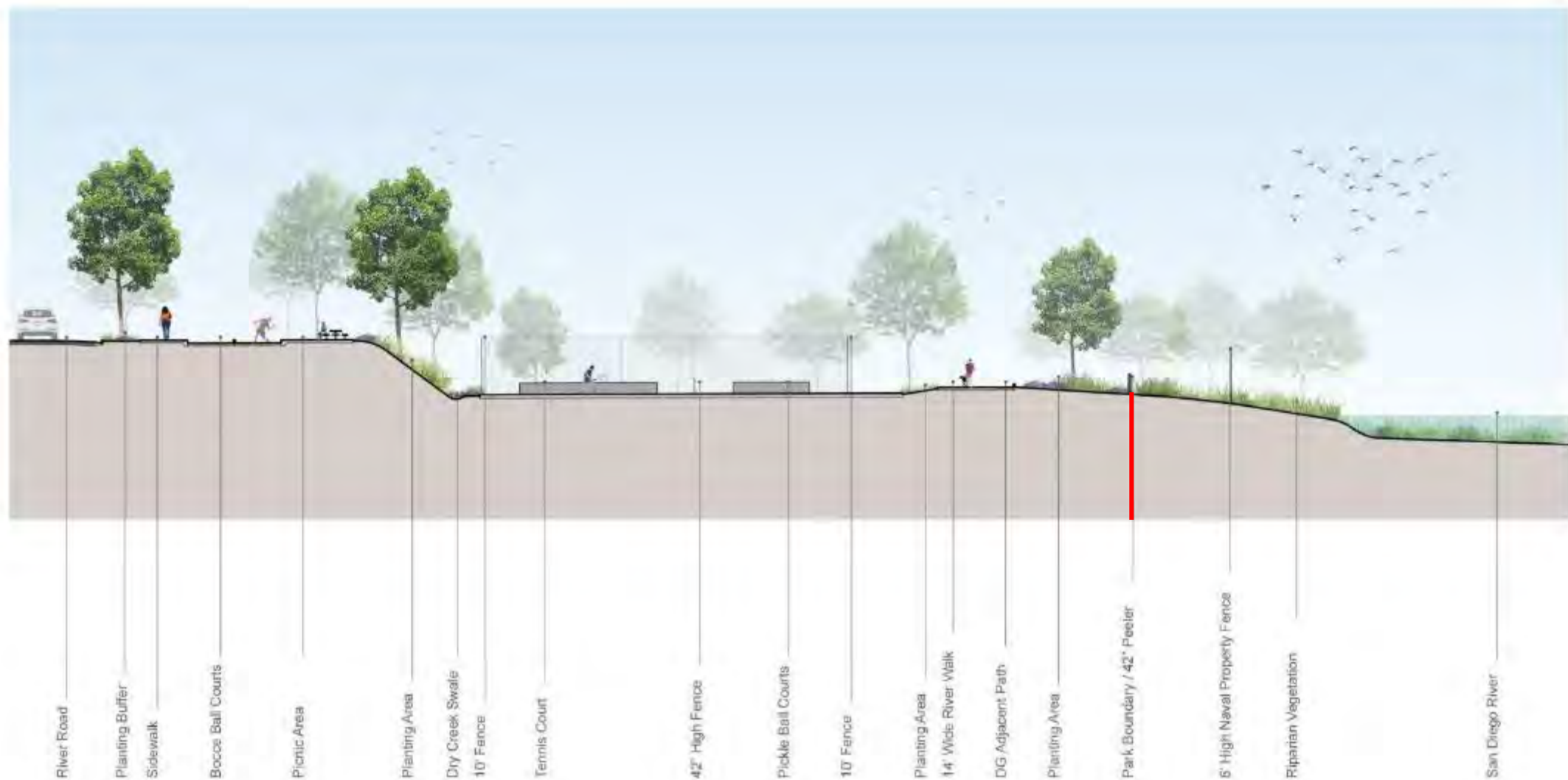


Photo credit: Jim Watkins



Section 4





River Road
 Planting Buffer
 Sidewalk
 Bocce Ball Courts
 Picnic Area
 Planting Area
 Dry Creek Swales
 10' Fence
 Tennis Court
 42' High Fence
 Pickle Ball Courts
 10' Fence
 Planting Area
 14' Wide River Walk
 DG Adjacent Path
 Planting Area
 Park Boundary / 42' Fecier
 6' High Naval Property Fence
 Riparian Vegetation
 San Diego River

Scale - 1 Horizontal x 1.5 Vertical

Section 4

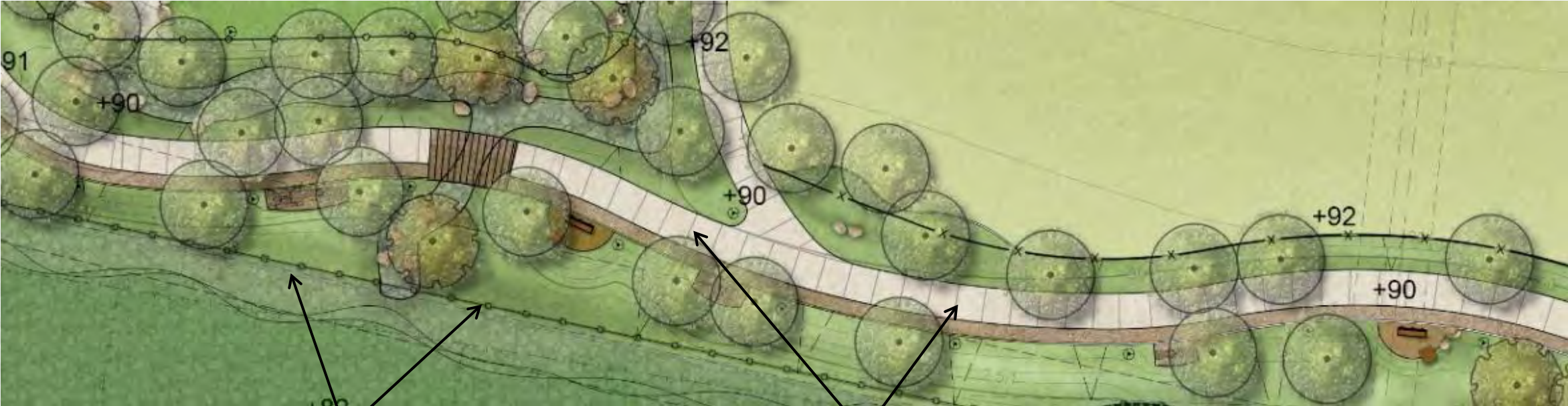
Mission Gorge Park
 San Diego, CA

Horizontal Scale: 1" = 30'-0"
 Vertical Scale: 1" = 20'-0"

San Diego River Trail



San Diego River Trail



Peeler Pole Fence



River Trail



Planting will draw from the natural character of the San Diego River corridor with native plantings along the western portion of the park transitioning to a more Mediterranean blend of planting closer to River Road to match the development plant palette.

Mediterranean Plantings Character



Furcraea foetida
Mauritus Hemp



Epilobium canum
California Fuchsia



Aloe spp.
Aloe



Tiupana tipu
Tipu



Senecio mandraliscae
Blue Chalk Sticks



Lantana spp.
Lantana



Rosemary officinalis



Lavandula spp.
Lavender



Grevillea spp.
Grevillea



Salvia greggii
Autumn Sage



Arbutus 'Marina'



Phoenix dactylifera
Date Palm

Native Plantings Character



Iva hayesiana –
Poverty Weed



Muhlenbergia rigens –
Calif. Deergrass



Baccharis salicifolia –
Mulefat



Artemisia californica



Heteromeles arbutifolia - Toyon



Salvia mellifera
Black Sage



Encelia californica –
Coast Sunflower



Iris douglasiana –
Douglas Iris



Platanus racemosa -
Calif Sycamore



Quercus agrifolia – Coast Live Oak

Overlooks with Interpretive Signage



Fitness Nodes





LEGEND

- 1 Multi-Purpose Turf Area
- 2 Park Plaza with Picnic Area
- 3 Events Only Decomposed Granite Area for Portable Restrooms
- 4 Children's Play Area
- 5 Shade Sails
- 6 Turf Plateau
- 7 Bocce Courts
- 8 Tennis Court
- 9 Pickle Ball Courts
- 10 14' Wide San Diego River Trail
- 11 Overlook with Interpretive Signage, Typ.
- 12 Dry Creek Bed, Typ.
- 13 Benches, Typ.
- 14 Picnic Tables, Typ.
- 15 Fitness Node, Typ.
- 16 Potential River Trail Connection
- 17 Pedestrian Bridge, Typ.
- 18 Raised Planter, Typ.
- 19 Stairs
- 20 Biofiltration Basin
- 21 Dog Park
- 22 Fog Spray on Boulder
- 23 10' HT. Chainlink Fence at Courts
- 24 42' Chainlink Fence
- 25 42' Peeler Pole Fence at Park Boundary
- 26 3' HT. Tubular Steel Fence
- 27 5' HT. Tubular Steel Fence
- 28 8' HT. Navy Property Fence
- 29 Informal Amphitheater
- 30 3' Retaining Wall
- 31 Connection To Neighborhood Trail and Future River Trail
- 32 Monument Sign
- 33 Pedestrian Pole Light, Typ.
- 34 Bollard Lighting, Typ.
- 35 Tree Uplighting, Typ.
- 36 Proposed Spot Elevations and Grading, Typ.

PARKING
 Total Spaces Required 21
 (usable parkland 4.2 ac)
 Total Spaces Provided 22
 (Designated for park use only - West side of River Road)
 Additional Street Parking 21
 (Non-designated parking - East side of River Road)

CONSULTANT: **SCHMIDT DESIGN GROUP**

DATE: 1/25/2021
 PROJECT #: 25-4-1
 DRAWN BY: LD, CD

SCALE: 1" = 30'-0"

SHEET 1 OF 3

DATE	ACTION	REFERENCE DOCUMENT #	COST \$/SQ FT	ACRES
2/10/21	SITE DESIGNATED	0000-0000		
2/10/21	CD/CONV (SAY MIN)	0000-0000		
	PARK BOARD APPROVAL	PEAR APPROVAL		
	INITIAL DEVELOPMENT	CD NO.	J.D. NO.	DRWG. NO.
		CD NO.	J.D. NO.	DRWG. NO.
		CD NO.	J.D. NO.	DRWG. NO.
		CD NO.	J.D. NO.	DRWG. NO.
		CD NO.	J.D. NO.	DRWG. NO.
		CD NO.	J.D. NO.	DRWG. NO.
		CD NO.	J.D. NO.	DRWG. NO.

ITEM	QUANTITY	ITEM	IMPROVEMENTS SUMMARY		QUANTITY	ITEM	QUANTITY
			QUANTITY	ITEM			
TOTAL SITE	5.3 AC	RESILIENT SURFACING	8,385 SF	PENING	1,858 LF	INSTALLATION/PARKING LOTS	44
T.B.S.F.	1.10 AC	PLAYGROUND SAND	332 SF	MULTI-PURPOSE C/1 PARKING	4,481 SF	B/B PAVING	5
SMPL'S PLANTING	1.71 AC	MINI TREES/SHRUBS	17,812 SF	DOG PARK FENCING	800 LF	INFORMAL AMPHITHEATER	1
10' D. FENCING	1.12 AC	MINI TREES/SHRUBS	21			DOG P/B FOUNDATION	3
DOG PARKING AT DOG PARK	2.42 AC	STREET PARKING STALLS ADA	1			PICNIC TABLES	11
OPEN TURF AT DOG PARK	1.11 AC					BENCHES	70
CONCRETE PAVING	1.80 AC					TRASH RECEPTACLES	12
						PARK FACILITY SIGN	1
						BOULDER	100
						REVISION	

CITY OF SAN DIEGO PARK AND RECREATION DEPARTMENT

THE GENERAL DEVELOPMENT PLAN

MISSION GORGE PARK

NEIGHBORHOOD PARK

LAURENT COORDINATES: XXX-XXXX THOMAS BROTHERS PACE

WBS No. S-00752

Questions and Discussion

THANK YOU

