



THE CITY OF SAN DIEGO  
TO THE PARK AND RECREATION BOARD

---

DATE ISSUED: October 15, 2021

REPORT NO: 103

ATTENTION: Park and Recreation Board  
Agenda of October 21, 2021

SUBJECT: Natural History Museum General Development Plan

SUMMARY

Issue – Should the Park and Recreation Board recommend approval of the proposed General Development Plan (GDP) for Balboa Park’s Natural History Museum?

Department Recommendation – Recommend approval of the proposed GDP.

Other Recommendations – The Balboa Park Committee (BPC) reviewed and considered the proposed project at various stages of development. Actions taken and recommendations made by the BPC is provided under the Discussion section below.

Fiscal Impact – There is no fiscal impact associated with this action. The Natural History Museum would be responsible for implementation and maintenance of the proposed improvements.

Water and Energy Conservation Status – The proposed project would reduce water use in this portion of Balboa Park by installing drought tolerant native plant materials and is consistent with City water conservation policies.

Environmental – The City of San Diego Development Services Department has advised Parks and Recreation staff that the proposed Project is consistent with the existing Environmental Impact Report (EIR) prepared for the Balboa Park Master Plan (BPMP) and Supplemental Environmental Impact Report (SEIR) prepared for the Central Mesa Precise Plan (CMPP). This includes determination that the proposed Project is consistent with historic preservation standards. The City of San Diego, as lead agency, will provide a consistency memorandum to that effect consistent with California Environmental Quality Act (CEQA) guidelines.

## BACKGROUND

Balboa Park is located immediately north of downtown San Diego and is surrounded by the communities of Golden Hill, North Park, Uptown, and Downtown. Balboa Park is one of the City's largest developed parks at 1,172 acres and is host to numerous recreational activities, cultural and educational institutions, and special events. Over 12 million visitors come to Balboa Park each year to enjoy the diversity of activities the Park has to offer.

Development, maintenance, and management of Balboa Park are governed by the BPMP, the CMPP, the East Mesa Precise Plan, and subsequent amendments to those documents. The BPMP is a part of the City's General Plan and implements land use policies for Balboa Park.

The BPMP was adopted by City Council on July 25, 1989 (Resolution No. R-274090). Subsequent amendments to the BPMP have been adopted by City Council on December 9, 1997 (R-289537); on May 4, 1998 (R-290039-1); on April 13, 2004 (R-299084-1); on September 21, 2004 (R299666); and on July 9, 2012 (R-307555-1). The BPMP addresses the entirety of Balboa Park and provides general guidelines for development, maintenance, and management.

The CMPP was adopted by City Council on October 20, 1992 (Resolution R-280920). Subsequent amendments to the CMPP have been adopted by City Council on May 4, 1998 (R-290031-2); on March 19, 1992 (R-296206); on April 13, 2004 (R-299084-2); and on July 9, 2012 (R-307555-2). The CMPP addresses the central portion of Balboa Park in greater detail than does the BPMP.

A large portion of Balboa Park's Central Mesa is included in the federally designated National Historic Landmark District (NHLD). As such, any improvements within the NHLD must meet the Secretary of the Interior's Standards for Rehabilitation. Determination of compliance is made by the City of San Diego Historic Resources staff and the Historic Resources Board.

The Natural History Museum (The NAT) is located in the East Prado area of the Park. The building was originally constructed in 1933 and was expanded to the northeast 2001. The current landscaping around the NAT was installed at the time of the building expansion. The building is a contributing element to the NHLD.

The CMPP speaks extensively to the landscape character of the Central Mesa and more specifically the NHLD. Descriptions of the 1915 and 1935 Exposition landscape theme are described as lush and exotic. More detail on this subject is provided under Discussion below.

## DISCUSSION

### *Project Description*

The NAT would like to expand educational opportunities outdoors into the landscape immediately surrounding the museum. The landscaping would be replanted to highlight San Diego native drought tolerant plant materials as well as provide information on the plants and their many uses beyond simple landscaping. Education would include how the plants contribute to the ecosystem, how they may have been used by Native Americans, medicinal uses, and water savings.

New decomposed granite walkways would be provided to allow tours through the landscapes. The decomposed granite would provide a natural and permeable surface while remaining accessible. Most of the walkways would be geometric in nature to be compatible with the formal design of Balboa Park. The exception would be at the northeast corner of the museum where the walkway and gathering area would be more organically designed to be compatible with the existing pathway and seating area to the north.

The landscaping around the museum would be organized into five sub-gardens: The Boulder Gathering Area, the Pollinator Garden, the Canopy Garden, the Seasonal Sensory Garden, and the North Shade Garden. Each garden presents a different educational opportunity with its own plant palette.

- ❖ The Boulder Gathering Area: this garden is located at the northeast corner of the museum. The garden replaces rarely used turf and provides a gathering space for park users as well as an outdoor classroom. The existing turf would be replaced with natural boulders, decomposed granite paving and customized benches to provide seating. Benches would be made of natural stone and lumber, creating a more natural environment. The gathering area would extend a decomposed granite path and landscaping to the north, connecting to the existing naturalized seating area created by Balboa Park staff. Existing trees in this area would be retained. Landscaping for the Boulder Gathering Area would extend to the existing planters located on the east side of the museum.
- ❖ Pollinator Garden: this garden is located at the southwest corner of the museum along El Prado. A new decomposed granite walkway would be provided to allow people to walk through the garden. Additional bench seating would also be provided. Some of the existing turf in this area would be removed to allow for more drought tolerant planting while maintaining the more formal strips of turf along El Prado. The plant palette for this garden would feature flowering plants that are pollinated by and provide habitat to various birds and insects.

- ❖ Canopy Garden: there is a moderately sized Moreton Bay Fig tree located at the southwest corner of the museum as well as several Palm tree species. The Moreton Bay Fig is the same species as the tree in the lawn area north of the museum and has a span of approximately 45–50 feet. To protect this tree, the garden will feature understory plantings only. A new decomposed granite walkway would be provided on the south side, separating the garden from the turf area and allowing a closer view of the plants.
- ❖ Seasonal Sensory Garden: the landscaping on the east side of the museum would be a seasonal sensory garden featuring plants to stimulate the senses. Plants will have various colors, flowers, aromas, and textures. These plants would be changed out on a seasonal basis, providing a changing experience. A new decomposed granite walkway with a low concrete accent wall would be provided to allow people to enter the garden. Existing trees would be retained.
- ❖ North Shade Garden: the shade garden is located in the planter between the museum’s accessible entrance and the Moreton Bay Fig lawn to the north. The small turf area would be removed and replaced with a small decomposed granite space with benches. Plant materials in this garden would feature native plants that can tolerate shade. Existing trees would be retained.

The proposed GDP also includes a new seating space in the Moreton Bay Fig lawn immediately north of the museum’s entrance stairs. The seating area would be paved in concrete to match the existing walkway and include four Prado wood and cast-iron benches per the CMPP. The new pad would be approximately five feet wide by thirty-five feet long.

A workshop was held with the Balboa Park Committee on August 2, 2021. As a result of the workshop the following changes were incorporated into the current GDP:

- A small turf area at the northwest corner of the building (Shade Garden) was eliminated and a seating area provided.
- Milkweed was added to the plant palette for the Pollinator Garden.
- Accessible benches were added to the Boulder Gathering Area.

### *Analysis*

The CMPP has several references to the landscape theme of the 1915–16 and 1935–36 Expositions as being lush and exotic. The CMPP supports the lush and exotic appearance but recommends accomplishing that goal using drought tolerant plant materials.

The Landscape goal of the CMPP (page 144) states; “Rehabilitate and modify the Central Mesa’s landscape in a manner which preserves its historic significance, accommodates a wide variety of public park activities and increases public enjoyment of the Park

environment.” A proposed garden that provides educational opportunities and introduces a variety of plant materials would meet this goal.

One of the planting guidelines of the CMPP (page 265) states; “Landscape planting should be designed to conserve as much water as possible.” Planting guidelines also state: “Lawns that primarily serve a primarily decorative function in small areas such as a street median planting should be phased out and replaced with drought tolerant low shrubs or groundcover.” The proposed GDP meets both guidelines by eliminating small patches of decorative turf and by providing a drought tolerant landscape.

The planting guidelines of the CMPP recommend “Existing significant plants and trees should be protected and well cared for” (page 265). The proposed GDP retains all existing trees and protects the Moreton Bay Fig at the southwest corner of the museum.

The landscape guidelines provide additional direction on plant selection (page 273); “Plant materials that possess the following characteristics should be included in these areas: - Exotic plant species that take full advantage of San Diego’s climate; - A lush, tropical appearance; - Plants that are particularly associated with San Diego or were popularized because of their appearance in the 1915 Exposition.” Native San Diego plant materials take advantage of San Diego’s climate and are particularly associated with San Diego.

The NAT proposes to provide and install all necessary improvements indicated on the proposed GDP. The NAT would also provide long-term maintenance of the landscape and irrigation systems. City staff would provide overall supervision of the landscaping and irrigation systems.

#### Other Recommendations

Historical Resources staff has reviewed the proposed GDP and found it to be consistent with preservation standards.

Development Services Environmental staff has reviewed the proposed GDP and found it to be consistent with the Environmental Impact Report (EIR) prepared for the Balboa Park Master Plan and the Supplemental EIR prepared for the Central Mesa Precise Plan.

On October 7, 2021 the Balboa Park Committee voted unanimously (9-0-0) advising the proposed GDP is consistent with the BPMP and CMPP and recommending approval of the proposed GDP.

#### CONCLUSION

The proposed GDP provides enhancements to the landscaping around the NAT that appear to be consistent with the goals of the BPMP and CMPP. The GDP also supports the goals of the Natural History Museum by providing educational opportunities to the public.

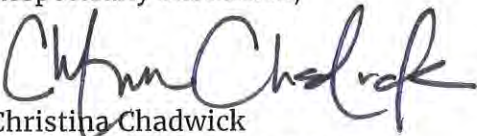
The use of drought tolerant native plant materials is consistent with the City's water conservation policies and planting design policies for City parks.

The proposed changes to the landscaping will be open and available to the general public as well as for special educational opportunities administered by the NAT. Free and open park land will not be reduced, and the leasehold boundaries of the NAT will not be changed.

ALTERNATIVES

1. Recommend approval of the proposed GDP with conditions; or
2. Do not recommend approval of the proposed GDP.

Respectfully submitted,



Christina Chadwick  
Assistant Deputy Director

CC/cd

Attachments: A. Presentation  
B. Natural History Museum GDP  
C. Historical Preservation Memorandum

cc: Council District 3 Office

Parks and Recreation Department

# Balboa Park Natural History Museum General Development Plan

Park and Recreation Board

October 21, 2021

Item 103

# Requested Action

- Should the Park and Recreation Board recommend approval of the proposed General Development Plan for Balboa Park's Natural History Museum?





Aerial Photograph





750 B Street  
Suite 1620  
San Diego,  
California 92101  
619.236.6143  
Estate Land Planning

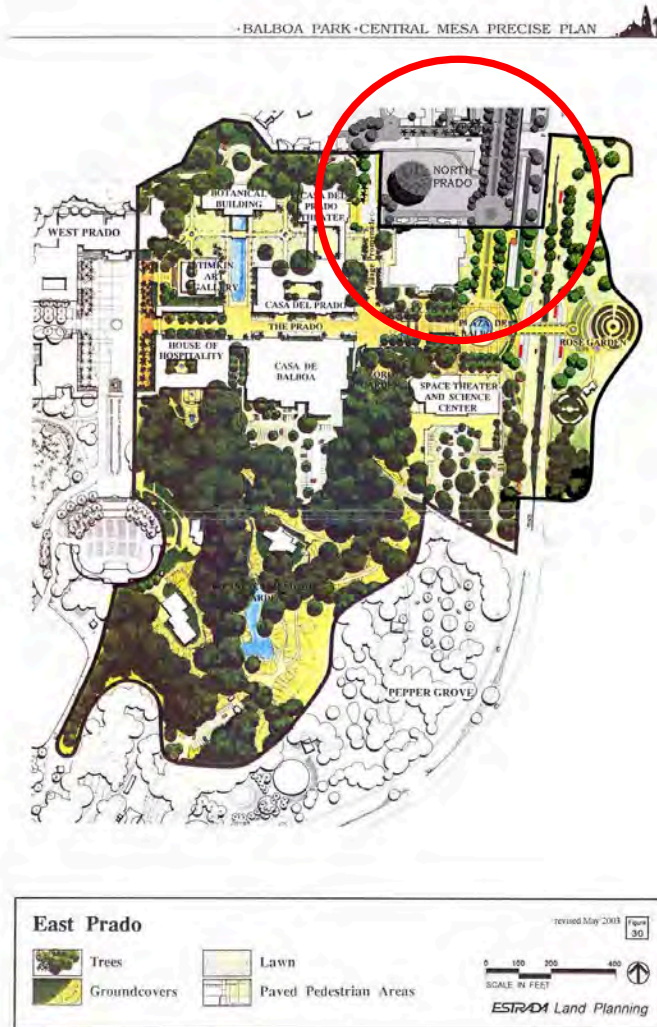
**SPURLOCK**  
LANDSCAPE ARCHITECTS

AUGUST 18, 2021

CITY OF SAN DIEGO PARK AND RECREATION DEPARTMENT  
THE GENERAL DEVELOPMENT PLAN  
**SAN DIEGO NATURAL  
HISTORY MUSEUM**  
EXTERIOR LANDSCAPE IMPROVEMENTS  
SHEET 2 OF 3

PSD  
(PSD #)

JANNEY COORDINATES: THOMAS BROTHERS PAGE:



**GOALS***Land Use*

Provide a wide variety of cultural activities within a public park environment.

*Circulation*

Establish a pedestrian park environment that features public transportation use while providing adequate vehicular access to and within the Central Mesa.

*Architecture*

Rehabilitate and modify the architecture of the Central Mesa in a manner which preserves its historic and aesthetic significance while providing for functional needs.

*Landscape*

Rehabilitate and modify the Central Mesa's landscape in a manner which preserves its historic significance, accommodates a wide variety of public park activities and increases public enjoyment of the Park environment.

*Management*

Develop and implement an effective management program that promotes maximum public use and enjoyment of the Park.

*Maintenance*

Develop and fund a maintenance program that will protect the public investment in buildings and grounds and facilitate maximum public enjoyment of the Park.

## *Landscape*

*Rehabilitate and modify the Central mesa's landscape in a manner which preserves its historic significance, accommodates a wide variety of public park activities, and increases public enjoyment of the Park environment.*





## LANDSCAPE

The goal of this section is to restore, rehabilitate and modify the Central Mesa's landscape in a manner that preserves its historic significance, accommodates a wide variety of public park activities and increases public enjoyment of the Park environment.

The landscape of the Central Mesa includes all outdoor spaces such as plazas, promenades, arcades, gardens and naturalized areas. There are three generalized park use areas that influence the proposed landscape treatments.

**Multiple use and outdoor attraction areas** (See Figure 45) - These will be the most heavily used areas of the Central Mesa and will include cultural and park uses, including open air concerts, outdoor exhibits and informal picnic and play areas. Emphasis will be placed on a high level of detail, generous site amenities, quality materials, comprehensive signage, decorative lighting, and ornamental plant materials. The most prominent landscape features in this area will consist of multiple use plazas that can serve the majority of the time as pleasant, relaxing outdoor public spaces and also facilitate a full spectrum of special public events.

**Picnic and Open Play Areas** (See Figure 46) - These areas possess the overall landscape character of a traditional public park and include features such as open lawns, children's play equipment and picnic tables. These areas will receive additional lighting, improved restroom facilities and increased site amenities, but will not be developed as intensively as the multiple use and outdoor attraction areas.

**Natural Use Areas** (See Figure 47) - These portions of the Central Mesa will remain as a refuge for passive uses such as hiking and observation of plants and wildlife. These areas will form an important link in a regional network of urban buffer corridors that provide habitat for native flora and fauna. An improved trail system with interpretive material are proposed for these areas of the Park.

In all landscaped areas for the Central Mesa, public safety will be emphasized by providing increased lighting, clear sightlines, and an expanded number of well used public spaces that displace undesirable activities.

Landscaped areas in the Central Mesa will allow for maximum public accessibility and flexibility of use. They should offer comfort, security and positive visual stimulation to every visitor.

All landscape design in the Central Mesa is based on historic precedent. Wherever possible, historic conditions are preserved or restored. Where new features must be incorporated, they complement, respect and support both the original design intent and the existing historic features that remain.

*All landscape design in the Central Mesa is based on historic precedent. Wherever possible, historic conditions are preserved or restored. Where new features must be incorporated, they complement, respect and support both the original design intent and the existing historic features that remain.*

## BALBOA PARK CENTRAL MESA PRECISE PLAN

Precise Plan - Landscape



Lawn medians can be replaced with ground cover to conserve water.



Lawns provide for picnic and play even in settings that are less than ideal.

- Landscape planting should be designed to conserve water as much as possible.

Lawns that serve a primarily decorative function in small areas such as a street median planting should be phased out and replaced with drought tolerant low shrubs or groundcover. Larger areas of lawn that contribute visually or functionally to the park experience should be retained.

Ornamental plantings with high water requirements should be located in high visual impact areas such as major plazas, promenades, and formal gardens.

- Plants with similar water requirements should be grouped together.
- Exotic plants that have relatively low water requirements should be used as much as possible. For example, Giant Bird of Paradise would be preferable to Banana species because of its similar appearance and lower water requirements.
- Installation of small planting beds surrounded by large paved areas should be discouraged.

- Existing landscape character and historic landscape themes should continue despite periodic drought conditions.

A public park is traditionally a place where people can go to experience a landscape that they cannot afford to individually possess. The Central Mesa is a botanical resource with a long history of displaying to residents and visitors alike the best outdoor environment San Diego has to offer. Even when regional drought conditions occur, Balboa Park should continue to serve as a botanical oasis whose wide lawns and exotic flora can refresh, educate and inspire those who visit. Areas of priority water use in the Central Mesa are shown in Figure 48.

- Existing significant plants and trees should be protected and well cared for. Significant plants and trees which must be moved should be relocated to other Central mesa locations with similar superior growing conditions. They should be moved during the winter months to help insure their survival. The significant plants and trees identified for relocation during the Precise Plan process are listed in the following table. The number preceding the name is the location number as shown in Figure 49. This number also appears in the Plant Inventory List located in the Landscape Analysis section. The number following the name is the documented quantity of trees to be relocated.

## Plants to be Relocated:

#7	Alectryon excelsus NCN	(8)
#20	Brahea brandegeei x edulis Brahea Hybrid	(7)
#42	Erythrina caffra Kaffirboom Coral Tree	(1)

## Planting Design Guidelines

*Landscape planting should be designed to conserve water as much as possible.*

*Lawns that serve a primarily decorative function in small areas such as street median planting should be phased out and replaced with drought tolerant low shrubs or groundcover.*

## BALBOA PARK • CENTRAL MESA PRECISE PLAN

## Precise Plan - Landscape

- Landscape planting areas will be divided into three general areas of emphasis.

- **Botanical Emphasis Areas** (see Figure 50)

Plant materials generally should be arranged formally in major plazas and promenades. They should be arranged informally in other areas such as lawns, canyons, and parking lots.

Plant materials that possess the following characteristics should be included in these areas.

- Exotic plant species that take full advantage of San Diego's mild climate.
- A lush, tropical appearance.
- Plants that are particularly associated with San Diego or were popularized because of their appearance in the 1915 Exposition.

The Park Boulevard Promenade is in the Botanical Emphasis Area, but plants for this area should be selected with care because of the parking structure below. Factors to take in consideration when choosing on-structure plants include: amount of leaf and fruit drop, reaction to acid/alkaline soils, root hardness, and root growth characteristics. Despite these constraints, the overall impact of the planting on the Park Boulevard Promenade should be a lush, tropical appearance as found in the rest of the Botanical Emphasis areas. Planting should include large, mature-canopy trees, palm trees, accent shrubs, and annual flowers. More detailed information on the planting on Park Boulevard Promenade is included in the Specific Recommendations section.

Representative species for this area:

Trees [underlined in original]

Phoenix reclinata – Senegalese Date Palm\*

Brahea brandegeei – San Jose Hesper Palm

Arecastrum romansoffianum – Queen Palm\*

Archontophoenix cunninghamiana – King Palm\*

Erythrina 'skyesii' – Skyes' Coral Tree

Alcornoque – Alcornoque\*

Eucalyptus deglupta – Mindanao Gum

Livistona decipiens – Ribbon Fan Palm\*

Bischofia javanica – Toog Tree

Ficus microcarpa – Indian Laurel Fig

Ficus macrophylla – Moreton Bay Fig

Chorisa speciosa – Floss Silk Tree

Stenocarpus sinuatus – Firewheel Tree\*

Brahea edulis – Guadalupe Fan Palm

Dombeya cecumum – Dombeya

Neodypsis decaryi – Triangle Palm\*

Markhamia hildebrandtii – Markhamia\*

- *Exotic plant species that take full advantage of San Diego's mild climate.*
- *A lush, tropical appearance.*
- *Plants that are particularly associated with San Diego or were popularized because of their appearance in the 1915 Exposition.*

# Other Recommendations

On October 7, 2021 the Balboa Park Committee voted unanimously (9-0-0) advising the proposed GDP is consistent with Balboa Park planning documents and recommending approval of the proposed GDP.

# Staff Recommendation

Recommend approval of the proposed General Development Plan

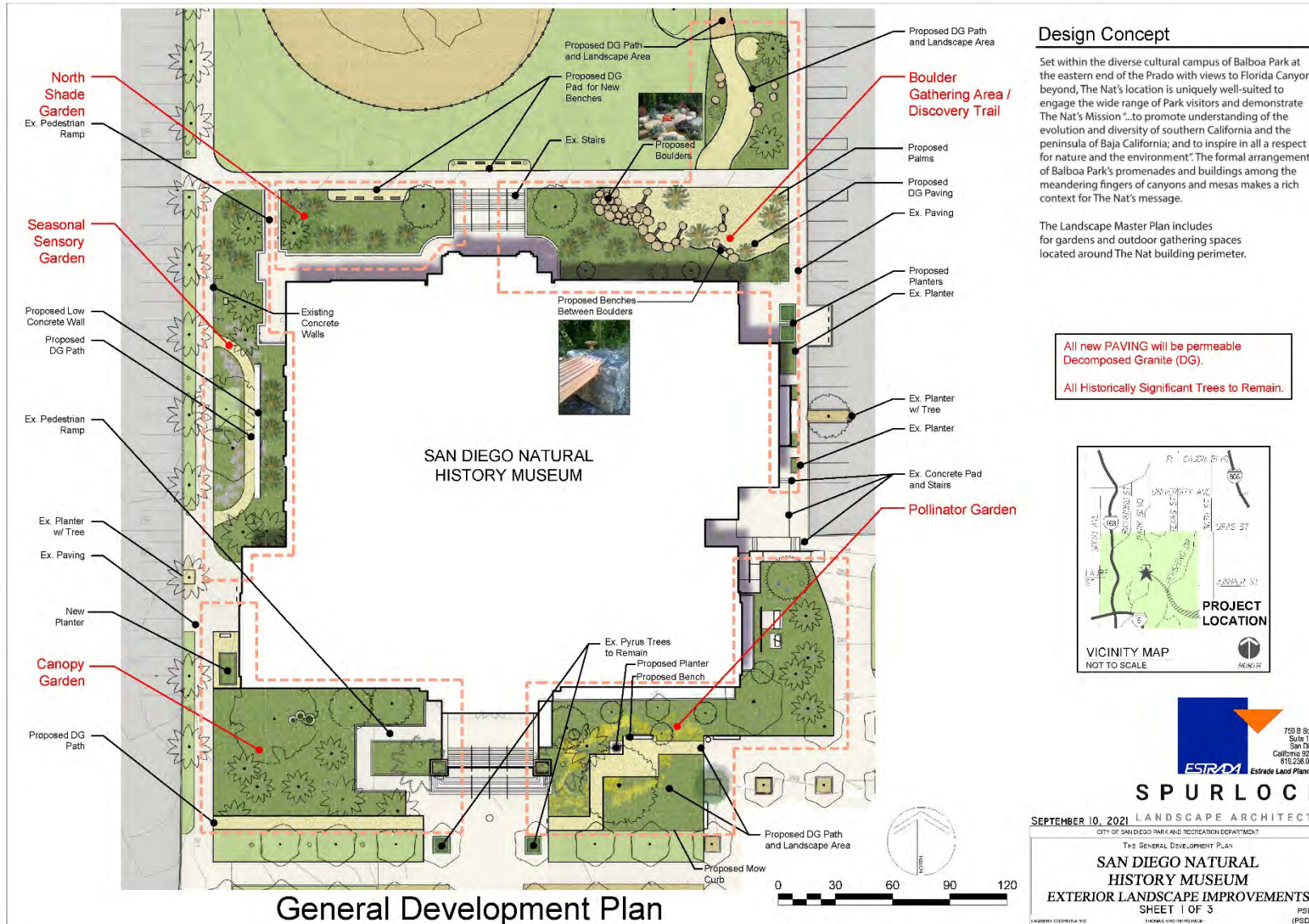


# The General Development Plan

Vicki Estrada

Principal

Estrada Land planning



## Plant Legend

Plants such as:

	Common Name	Scientific Name		Common Name	Scientific Name		Common Name	Scientific Name
<b>Boulder Gathering Area/ Discovery Trail</b>	Bladderpod	Peritoma arborea	<b>Canopy Garden</b>	Canyon grey	Artemisia californica 'montana'	<b>Seasonal Sensory Garden</b>	Agave	Agave spp. (Entrance)
	Blue dicks	Dichostemma capitatum		Ceanothus spp.	Ceanothus sp.		Boardinghouse	Penstemon spp.
	Blue Eyed Grass	Sisyrinchium angustifolium		Channel Islands Tree Poppy	Dendromecon harfordii		Blue Elderberry	Sambucus mexicana
	Boojum	Fouquieria columnaris		Coral bells	Hesperis spp.		CA Sunflower	Helianthus californicus
	CA Buckwheat	Eriogonum fasciculatum		Currant / Fuchsia Flower Gooseberry	Ribes spp.		CA Wildrose	Rosa californica
	Chuparosa	Justicia californica		Footail Agave	Agave attenuata		California Aster	Corethrogyne filaginifolia
	Datillo Yucca	Yucca valida		Hummingbird sage	<b>Salvia spathacea</b>		California Sagebrush	Artemisia californica
	Desert Apricot	Prunus fremontii		Island Bush Poppy	<b>Dendromecon rigida</b>		Cleveland sage hybrids	Salvia 'Pozo Blue'
	Desert Fan Palm	Washingtonia filifera		Snow berry	Symphoricarpos alba		Deerweed	Acmispon glaber
	Desert Globemallow	Sphaeralcea ambigua		Western Swordfern	Polystichum munium		Grape Soda Lupine	Lupinus excubitus
	Field Sedge	Carex praegracilis		Agave	Agave spp. (Entrance)		Joshiba	Simmondsia chinensis
	Giant Cardon	Pachycereus pringlei		Basket rush	Juncus textilis		Lemon's Marigold	Tagetes leonardi
	Giant Chain Fern	Woodwardia fimbriata		Beardtongues	Penstemon spp.		Lemonade Berry	Rhus integrifolia
	Mexican Blue Palm	Brahea armata		Buckthorn	Rhamnus spp.		Lewis' Mock Orange	Philadelphus lewisii
	Nodding Needle Grass	Stipa comata		CA Sunflower	Helianthus californicus		Mexican bush sage	Salvia lucanthea
	Pacific Coast Iris	Iris sp.		CA Wildrose	Rosa californica		Mexican holdback	Ceanothus mexicanus
	Palo Verde	Parkinsonia sp.		California Sagebrush	Artemisia californica		Mint species	Salvia spp.
	Pink Fairy Duster	Calliandra eriophylla		Cleveland sage hybrids	Salvia 'Pozo Blue'		Mock orange	Philadelphus lewisii
	Pink Hair Grass	Muhlenbergia capillaris		Coyote Brush	Baccharis pilularis		Monkeyflower	Erythranthe sp.
	Purple Three-awn	Aristida purpurea		Deerweed	Acmispon glaber		Nolina	Nolina sp.
	Western Swordfern	Polystichum munium		Grape Soda Lupine	Lupinus excubitus		Parish's Rabbitbrush	Ericameria parshii
	Brown's Dudleya	Dudleya brittonii		Joshiba	Simmondsia chinensis		Pearly Everlasting	Symphoricarpos alba
	Coast Oenothera	Cylindropuntia prolifera		Lemon's Marigold	Tagetes leonardi		Sages (variety)	Salvia sp.
	Heather Root Cereus	Pereskia acinaciformis		Mexican holdback	Ceanothus mexicanus		Showy Snapdragon	Galvezia speciosa
	Elephant Tree	Bursera microphylla		Mint species	Salvia spp.		Small Leaved Rose	Rosa minutifolia
	Fingertips	Dudleya edulis		Mock orange	Philadelphus lewisii		Torrey's Hybrid Oak	Quercus acutidens
	Golden spine cactus	Bergerocactus emeryi		Monkeyflower	Erythranthe sp.		Wild cucumber/ Chiloteche	Maran macrocarpa
	Ocotillo	Fouquieria splendens		Nolina	Nolina sp.		Wishbone Bush	Mirabilis sp.
	Plumeria	Plumeria rubra		Parish's Rabbitbrush	Ericameria parshii		Yucca	Yucca spp.
	Spurge	Euphorbia xanti		Pearly Everlasting	Symphoricarpos alba	<b>North Shade Garden</b>	Blue Plant	Scrophularia californica
<b>Pollinator Garden</b>	Raja Fairy Duster	Calliandra californica		Sages (variety)	Salvia sp.		Catalina Currant	Ribes viburnifolium
	Burgandy Desert Willow	Chilopsis burgandy		Showy Snapdragon	Galvezia speciosa		Coral Bells	Hesperis spp.
	Bush Anemone	Carpenteria californica		Small Leaved Rose	Rosa minutifolia		Desert Fan Palm	Washingtonia filifera
	CA Coffee Berry	Rhamnus californica		Torrey's Hybrid Oak	Quercus acutidens		Desert Wild Grape	Vitis girdiana
	CA Everlasting	Pseudognaphalium californicum		Wild cucumber/ Chiloteche	Maran macrocarpa		Desert Willow	Chilopsis linearis
	CA Lilac, Ceanothus	Ceanothus spp.		Wishbone Bush	Mirabilis sp.		Giant Chain Fern	Woodwardia fimbriata
	CA Poppy	Echscholzia californica		Yucca	Yucca spp.		Gooseberry	Ribes speciosum
	CA Sunflower	Helianthus californicus					Guadalupe Island Palm	Brahea edulis
	Desert Willow	Chilopsis linearis					Heartleaf penstemon	Keckia cordifolia
	Golden Yarrow	Achillea millefolium					Honeyuckle	Subserotata denudata
	Lavatera	Eriophyllum confertiflorum					Mahonia	Mahonia spp.
	Manzanita	Larrea tridentata					Mexican Blue Palm	Brahea armata
	Mint species	Salvia clevelandii					Mexican Fan Palm	Washingtonia robusta
	Penstemon	Penstemon spp.					Miner's Lettuce	Claytonia perfoliata
	San Diego Co. Sunflower	Viguiera lacinata					Monkeyflower	Erythranthe cardinalis
	Sticky Monkey Flower	Mimulus aurantiacus					Narrow Leaved Bedstraw	Galium angustifolium
	Yellow Trumpetbush	Tecoma stans					Narrow leaf millweed	Asclepias fascicularis
	<b>Asclepias californica</b>	<b>California Milkweed</b>					Scrub Oak	Quercus berberidifolia
							Spiny Rush	Juncus acutus
							Western Swordfern	Polystichum munium
							Western Sycamore	Platanus racemosa
							Verba Mancia	Anemopsis californica



**SPURLOCK**

SEPTEMBER 20, 2021 LANDSCAPE ARCHITECTS

CITY OF SAN DIEGO PARK AND RECREATION DEPARTMENT

THE GENERAL DEVELOPMENT PLAN

**SAN DIEGO NATURAL HISTORY MUSEUM**

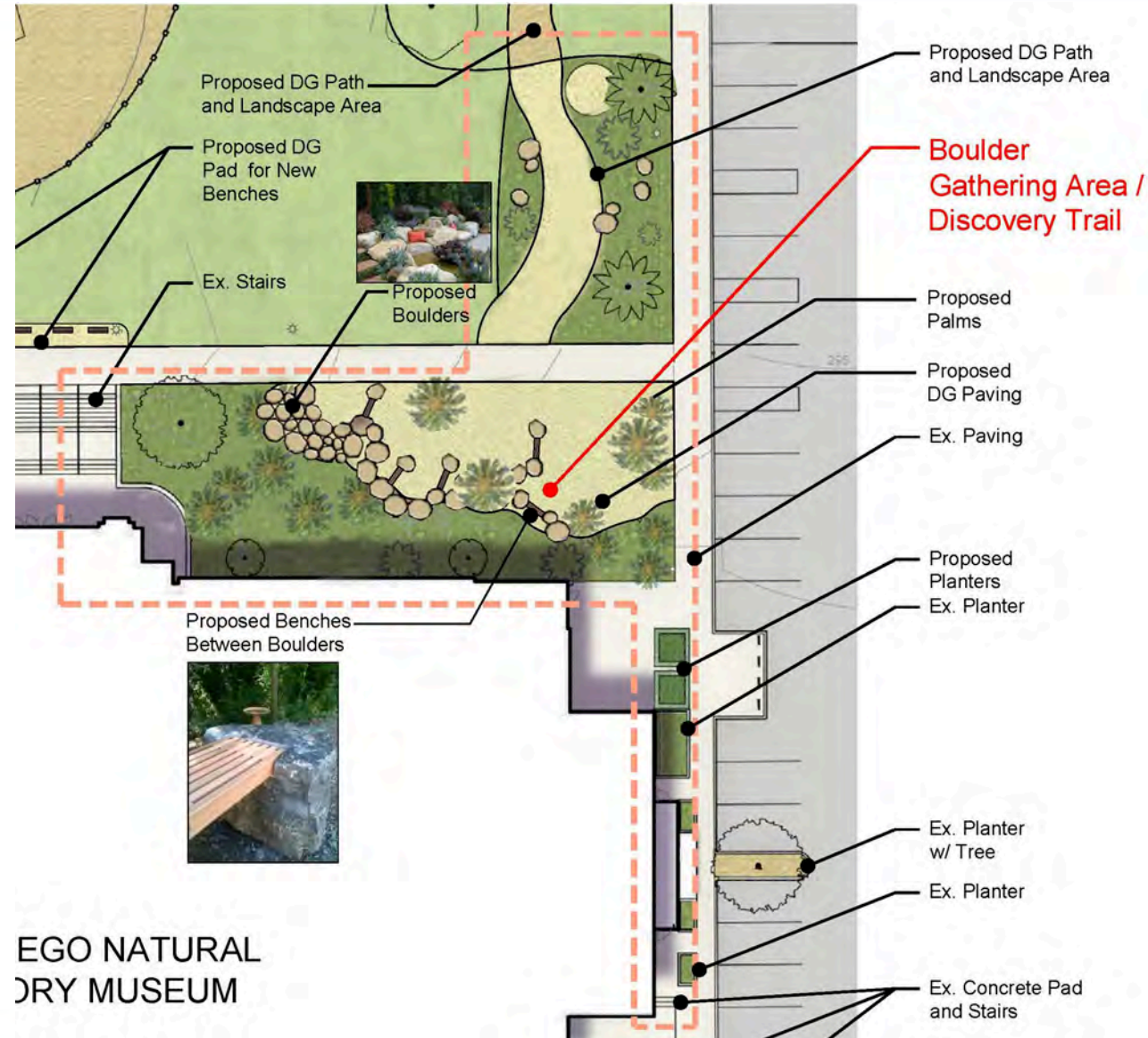
**EXTERIOR LANDSCAPE IMPROVEMENTS**

SHEET 3 OF 3

LAUREN COOPER (PSD #)

THE ARCHITECT'S SEAL (PSD #)



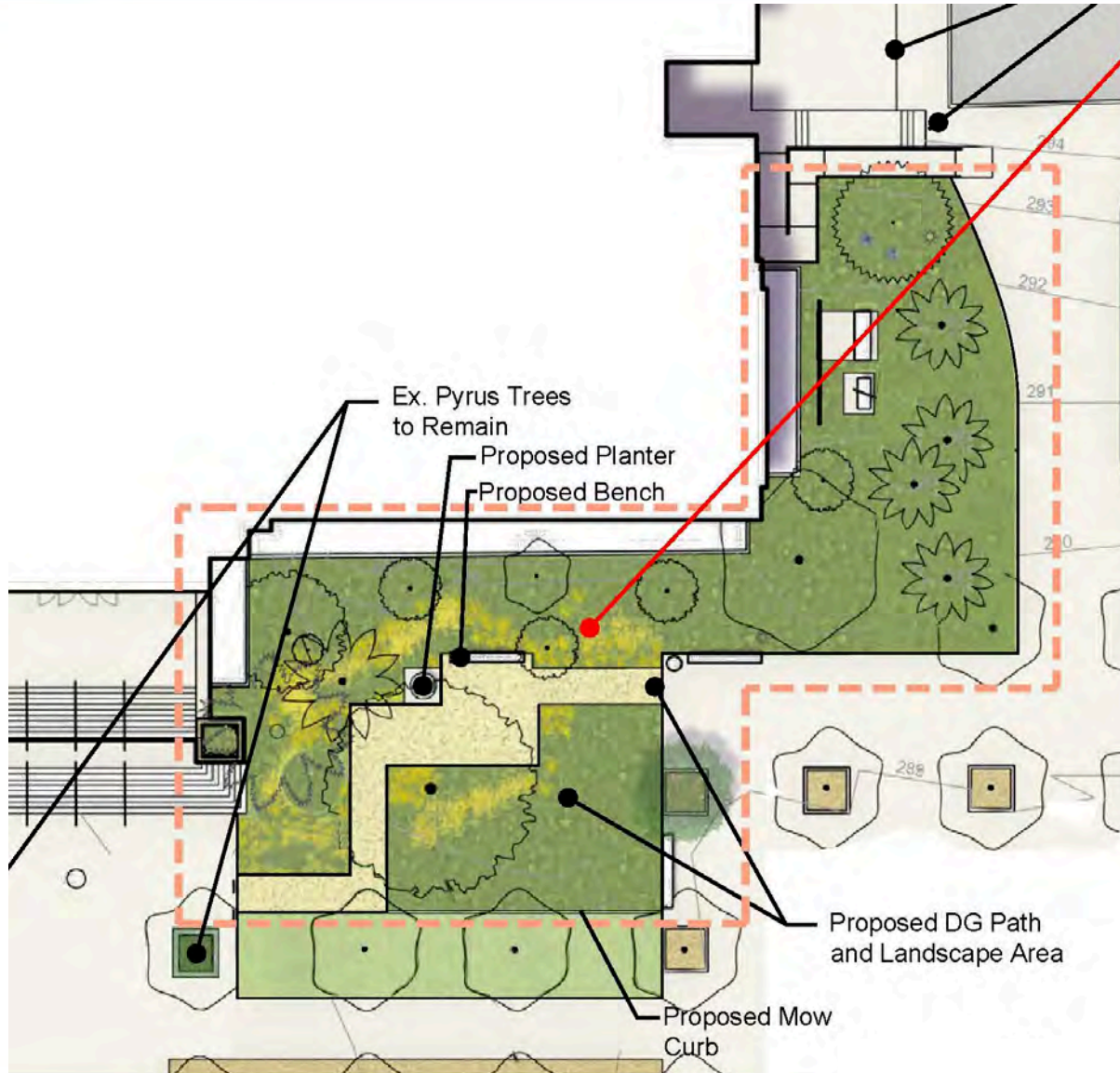


## Boulder Gathering Area/ Discovery Trail

Bladderpod  
Blue dicks  
Blue Eyed Grass  
Boojum  
CA Buckwheat  
Chuparosa  
Datilillo Yucca  
Desert Apricot  
Desert Fan Palm  
Desert Globemallow  
Field Sedge  
Giant Cardon  
Giant Chain Fern  
Mexican Blue Palm  
Nodding Needle Grass  
Pacific Coast Iris  
Palo Verde  
Pink Fairy Duster  
Pink Hair Grass  
Purple Three-awn  
Western Swordfern  
Britton's Dudleya  
Coast Cholla  
Dahlia Root Cereus  
Elephant Tree  
Fingertips  
Golden spine cereus  
Ocotillo  
Plumeria  
Spurge

Peritoma arborea  
Dichelostemma capitatum  
Sisyrinchium angustifolium  
Fouquieria columnaris  
Eriogonum fasciculatum  
Justicia californica  
Yucca valida  
Prunus fremontii  
Washingtonia filifera  
Sphaeralcea ambigua  
Carex praeegracilis  
Pachycereus pringlei  
Woodwardia fimbriata  
Brahea armata  
Stipa cernua  
Iris Sp.  
Parkinsonia sp.  
Calliandra eriophylla  
Muhlenbergia capillaris  
Aristida purpurea  
Polystichum munitum  
Dudleya brittonii  
Cylindropuntia prolifera  
Peniocereus striatus  
Bursera microphylla  
Dudleya edulis  
Bergerocactus emoryi  
Fouquieria splendens  
Plumeria rubra  
Euphorbia xanti

EGO NATURAL  
DRY MUSEUM



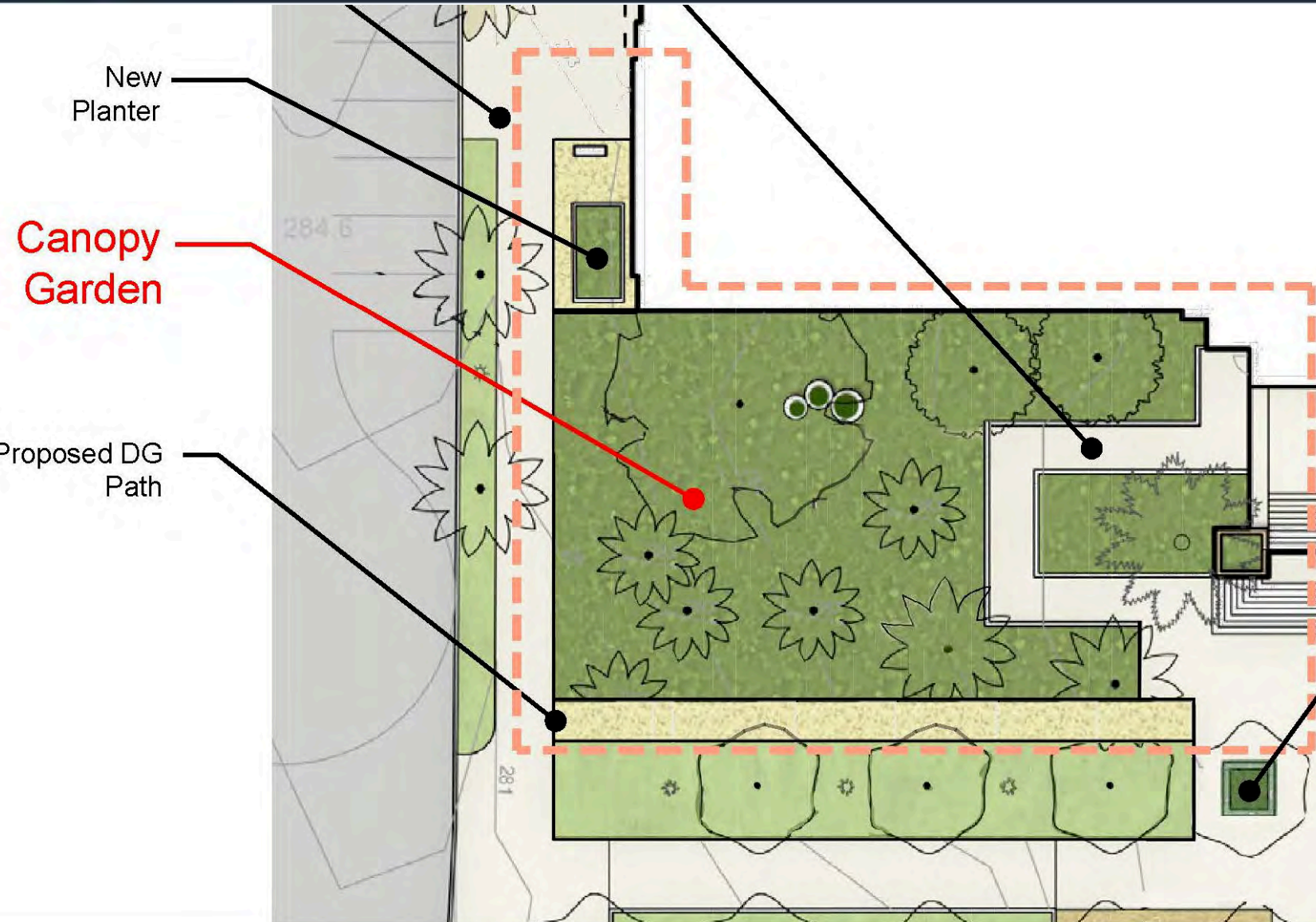
## Pollinator Garden

## Pollinator Garden

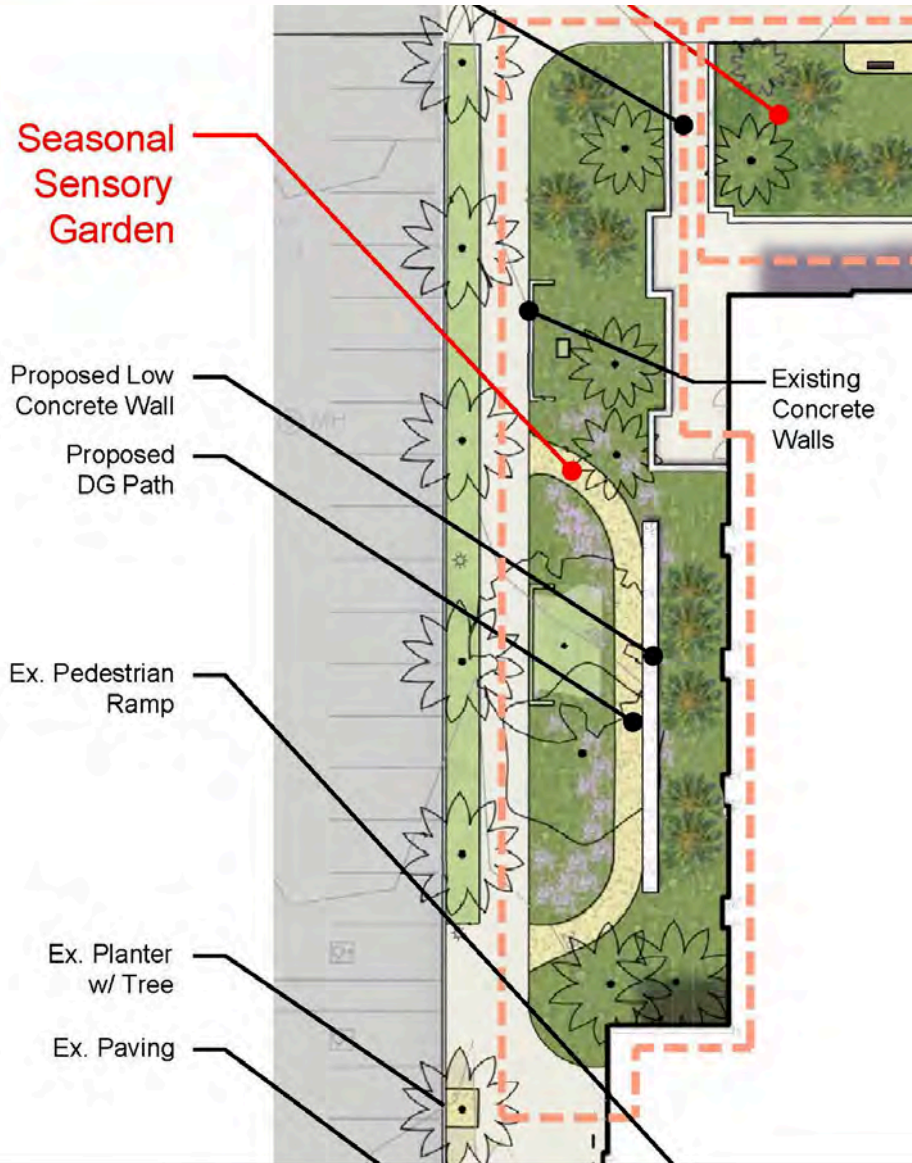
Baja Fairy Duster  
 Burgandy Deserte Willow  
 Bush Anemone  
 CA Coffee Berry  
 CA Everlasting  
 CA Lilac; Ceanothus  
 CA Poppy  
 CA Sunflower  
 Desert Willow  
 Golden Yarrow  
 Golden Yarrow  
 Lavaterra  
 Manzanita  
 Mint species  
 Penstemon  
 San Diego Co. Sunflower  
 Sticky Monkey Flower  
 Yellow Trumpetbush  
**Asclepias californica**

Caliantra californica  
 Chilopsis burgandy  
 Carpenteria californica  
 Rhamnus californica  
 Pseudognaphalium californium  
 Ceanothus spp.  
 Eschscholzia californica  
 Helianthus californicus  
 Chilopsis linearis  
 Achillea millefolium  
 Eriophyllum confertiflorum  
 Lavatera assurgentiflora  
 Arctostaphylos spp  
 Salvia clevelandii  
 Penstemon spp.  
 Viguiera lacinata  
 Mimulus aurantiacus  
 Tecoma stans  
**California Milkweed**





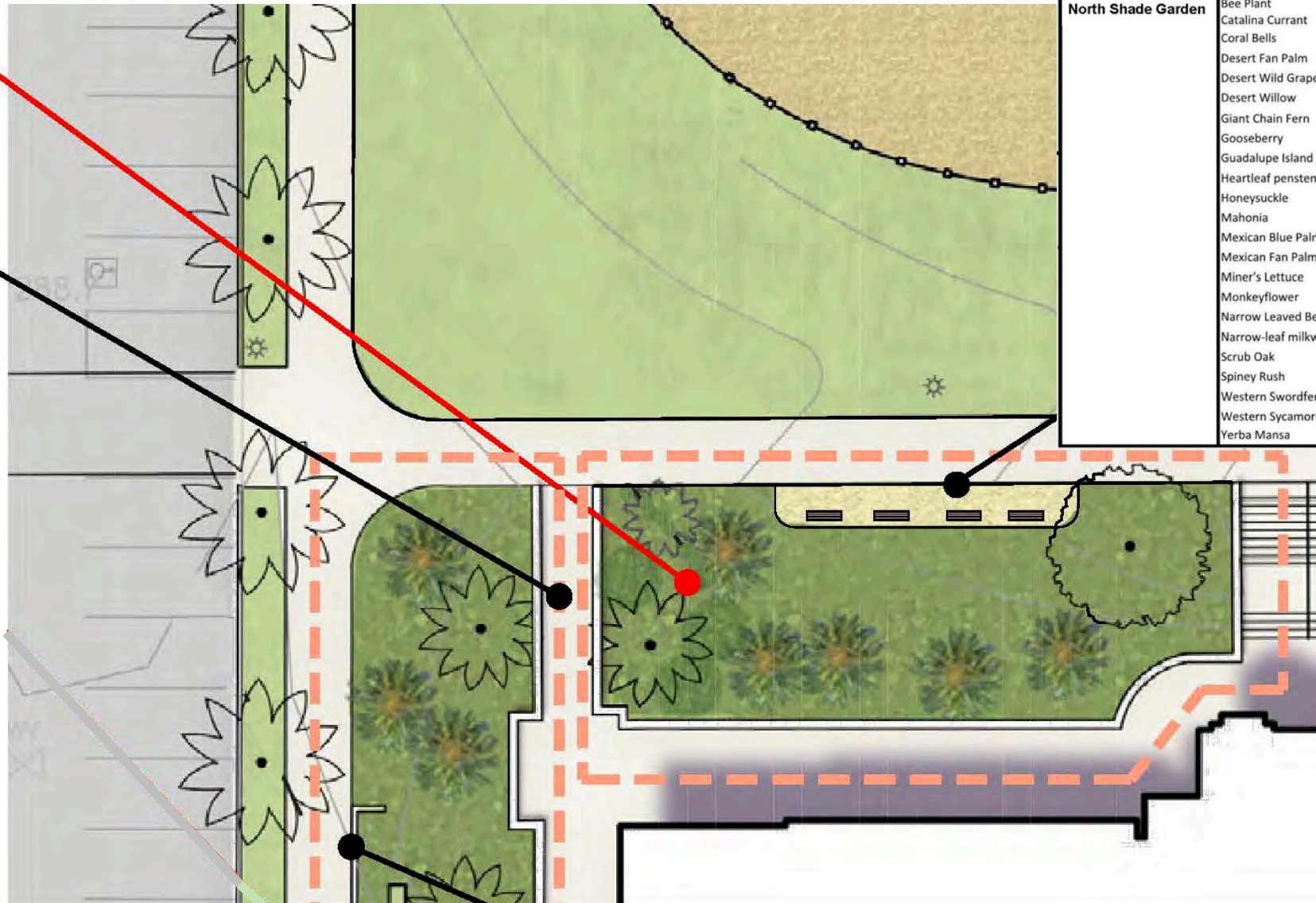
Canopy Garden		
Canyon grey	Ceanothus spp.	Artemisia californica 'montana'
Channel Islands Tree Poppy	Coral bells	Ceanothus sp.
Coral bells	Current / Fuschia Flower Gooseberry	Dendromecon harfordii
Foxtail Agave	Hummingbird sage	Heuchera spp.
Island Bush Poppy	Snow berry	Ribes spp.
Western Swordfern	Agave	Agave attenuata
Basket rush	Beardtongues	<b>Salvia spathacea</b>
Buckthorn	CA Sunflower	<b>Dendromecon rigida</b>
CA Wildrose	California Sagebrush	Symphoricarpos alba
Cleveland sage hybrids	Coyote Brush	Polystichum munitum
Deerweed	Grape Soda Lupine	Agave spp. (entrance)
Jojoba	Lemmon's Marigold	Juncus textilis
Mexican holdback	Mint species	Penstemon spp.
Mock orange	Monkeyflower	Rhamnus spp.
Nolina	Parish's Rabbitbrush	Helianthus californicus
Pearly Everlasting	Sages (variety)	Rosa californica
Showy Snapdragon	Small Leaved Rose	Artemisia californica
Torrey's Hybrid Oak	Wild cucumber/ Chillicothe	Salvia 'Poza Blue'
Wishbone Bush	Yucca	Baccharis pilularis
		Acmispon glaber
		Lupinus excubitus
		Simmondsia chinensis
		Tagetes lemonii
		Ceasalpinia mexicana
		Salvia spp.
		Philadelphus lewisii
		Erythranthe sp.
		Nolina sp.
		Ericameria parishii
		Symphoricarpos alba
		Salvia sp.
		Galvezia speciosa
		Rosa minutifolia
		Quercus acutidens
		Marah macrocarpa
		Mirabilis sp.
		Yucca spp.



Seasonal Sensory Garden		
Agave	Agave spp. (Entrance)	
Beardtongues	Penstemon spp	
Blue Elderberry	Sambucus mexicanus	
CA Sunflower	Helianthus californicus	
CA Wildrose	Rosa californica	
California Aster	Corethrogyne filaginifolia	
California Sagebrush	Artemisia californica	
Cleveland sage hybrids	Salvia 'Pozo Blue'	
Deerweed	Acmispon glaber	
Grape Soda Lupine	Lupinus excubitus	
Jojoba	Simmondsia chinensis	
Lemmon's Marigold	Tagetes lemonii	
Lemonade Berry	Rhus integrifolia	
Lewis' Mock Orange	Philadelphus lewisii	
Mexican bush sage	Salvia lucanthea	
Mexican holdback	Ceanothus mexicana	
Mint species	Salvia spp	
Mock orange	Philadelphus lewisii	
Monkeyflower	Erythranthe sp.	
Nolina	Nolina sp.	
Parish's Rabbitbrush	Ericameria parishii	
Pearly Everlasting	Symphoricarpos alba	
Sages (variety)	Salvia sp.	
Showy Snapdragon	Galvezia speciosaii	
Small Leaved Rose	Rosa minutifolia	
Torrey's Hybrid Oak	Quercus acutidens	
Wild cucumber/ Chilicothe	Marah macrocarpa	
Wishbone Bush	Mirabilis sp.	
Yucca	Yucca spp.	



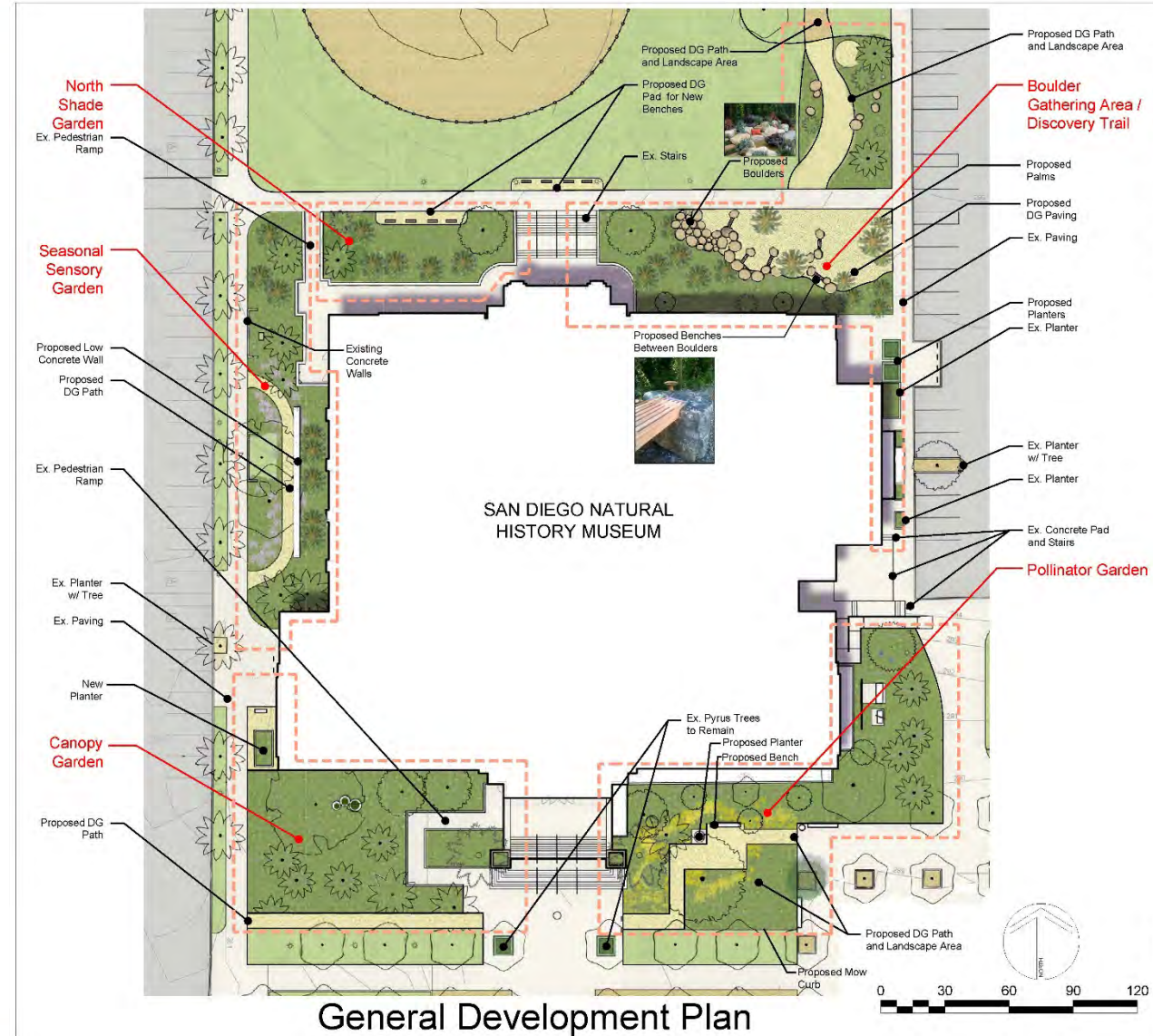
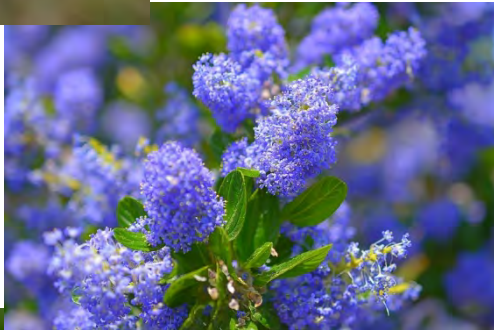
**North  
Shade  
Garden**  
Ex. Pedestrian  
Ramp



North Shade Garden	
Bee Plant	Scrophularia californica
Catalina Currant	Ribes viburnifolium
Coral Bells	Heuchera spp
Desert Fan Palm	Washingtonia filifera
Desert Wild Grape	Vitis girdiana
Desert Willow	Chilopsis linearis
Giant Chain Fern	Woodwardia fimbriata
Gooseberry	Ribes speciosum
Guadalupe Island Palm	Brahea edulis
Heartleaf penstemon	Keckiella cordifolia
Honeysuckle	Subspecata denidada
Mahonia	Mahonia spp
Mexican Blue Palm	Brahea armata
Mexican Fan Palm	Washingtonia robusta
Miner's Lettuce	Claytonia perfoliata
Monkeyflower	Eryranthe cardinalis
Narrow Leaved Bedstraw	Galium angustifolium
Narrow-leaf milkweed	Asclepias fascicularis
Scrub Oak	Quercus berberidifolia
Spiney Rush	Juncus acutus
Western Swordfern	Polystichum munitum
Western Sycamore	Platanus racemosa
Yerba Mansa	Anemopsis californica



# Questions?



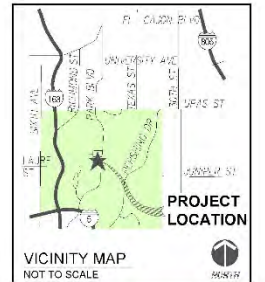
## Design Concept

Set within the diverse cultural campus of Balboa Park at the eastern end of the Prado with views to Florida Canyon beyond, The Nat's location is uniquely well-suited to engage the wide range of Park visitors and demonstrate The Nat's Mission "...to promote understanding of the evolution and diversity of southern California and the peninsula of Baja California; and to inspire in all a respect for nature and the environment". The formal arrangement of Balboa Park's promenades and buildings among the meandering fingers of canyons and mesas makes a rich context for The Nat's message.

The Landscape Master Plan includes for gardens and outdoor gathering spaces located around The Nat building perimeter.

All new PAVING will be permeable Decomposed Granite (DG).

All Historically Significant Trees to Remain.



**SPUR LOCK**  
LANDSCAPE ARCHITECTS

SEPTEMBER 10, 2021

CITY OF SAN DIEGO PARKS AND RECREATION DEPARTMENT

THE GENERAL DEVELOPMENT PLAN

**SAN DIEGO NATURAL HISTORY MUSEUM**

**EXTERIOR LANDSCAPE IMPROVEMENTS**

SHEET 1 OF 3

PSD (PSD #)



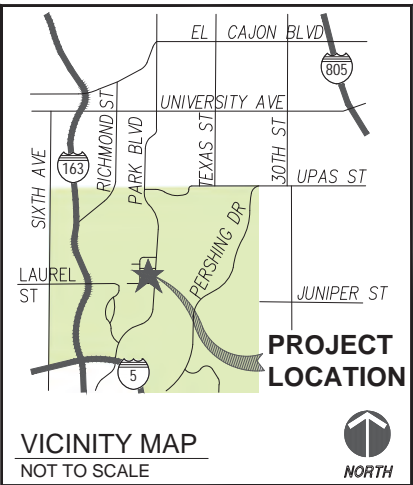
Design Concept

Set within the diverse cultural campus of Balboa Park at the eastern end of the Prado with views to Florida Canyon beyond, The Nat's location is uniquely well-suited to engage the wide range of Park visitors and demonstrate The Nat's Mission "...to promote understanding of the evolution and diversity of southern California and the peninsula of Baja California; and to inspire in all a respect for nature and the environment". The formal arrangement of Balboa Park's promenades and buildings among the meandering fingers of canyons and mesas makes a rich context for The Nat's message.

The Landscape Master Plan includes for gardens and outdoor gathering spaces located around The Nat building perimeter.

All new PAVING will be permeable Decomposed Granite (DG).

All Historically Significant Trees to Remain.



SPURLOCK

SEPTEMBER 20, 2021 LANDSCAPE ARCHITECTS

CITY OF SAN DIEGO PARK AND RECREATION DEPARTMENT

THE GENERAL DEVELOPMENT PLAN

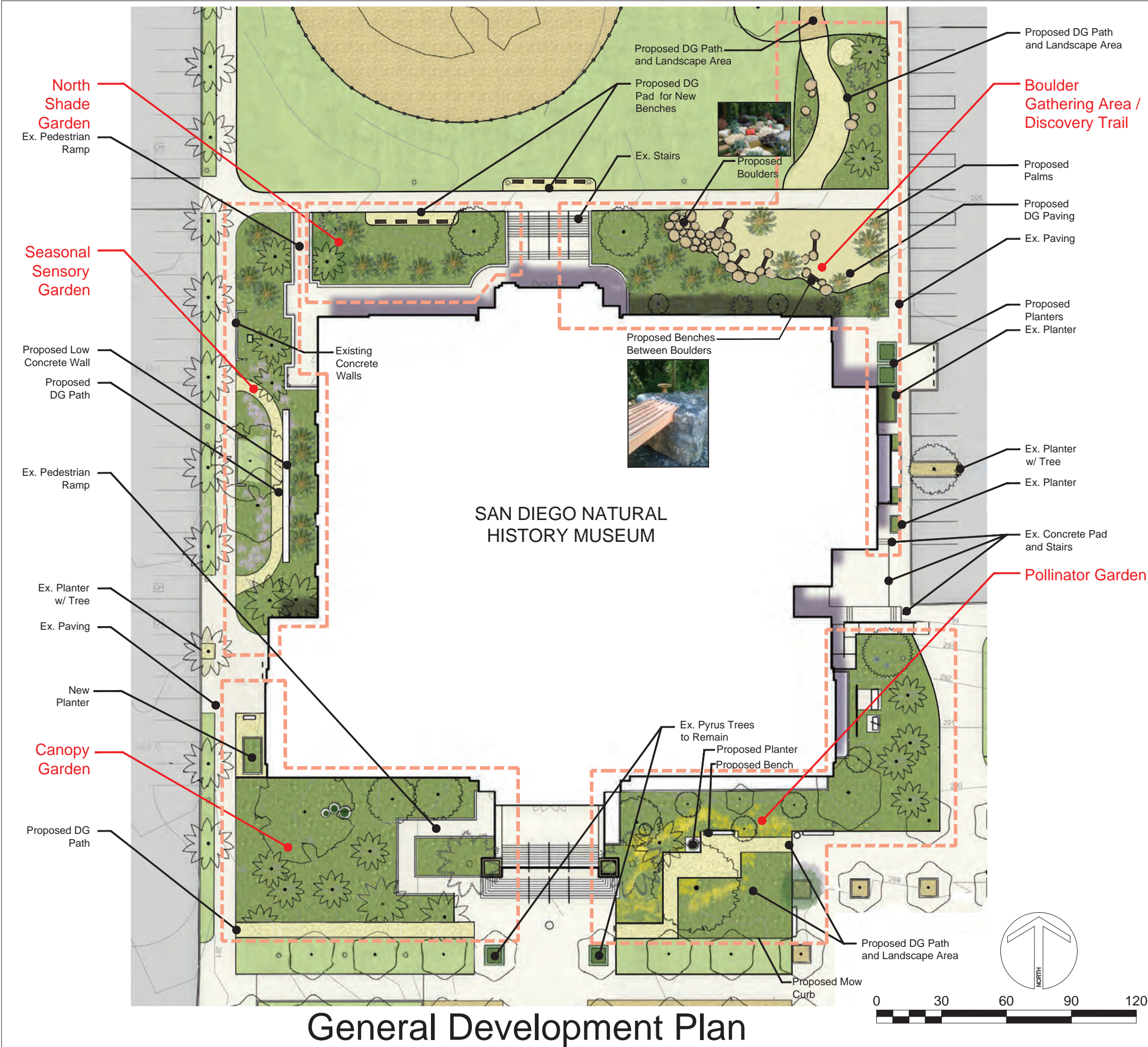
**SAN DIEGO NATURAL HISTORY MUSEUM**

**EXTERIOR LANDSCAPE IMPROVEMENTS**

**SHEET 1 OF 3**

PSD (PSD #)

LAMBERT COORDINATES: THOMAS BROTHERS PAGE:

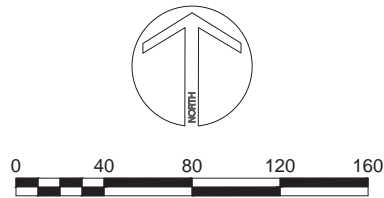


General Development Plan





Aerial Photograph





750 B Street  
Suite 1620  
San Diego  
California 92101  
619.236.0143  
**ESTRADA** Estrada Land Planning

**SPURLOCK**

SEPTEMBER 20, 2021 **LANDSCAPE ARCHITECTS**

CITY OF SAN DIEGO PARK AND RECREATION DEPARTMENT

THE GENERAL DEVELOPMENT PLAN

**SAN DIEGO NATURAL  
HISTORY MUSEUM**

**EXTERIOR LANDSCAPE IMPROVEMENTS**

**SHEET 2 OF 3**

LAMBERT COORDINATES: THOMAS BROTHERS PAGE: PSD (PSD #)



Plant Legend

Plants such as:

	Common Name	Scientific Name		Common Name	Scientific Name		Common Name	Scientific Name
Boulder Gathering Area/ Discovery Trail	Bladderpod	Peritoma arborea	Canopy Garden	Canyon grey	Artemisia californica 'montara'	Seasonal Sensory Garden	Agave	Agave spp. (Entrance)
	Blue dicks	Dichelostemma capitatum		Ceanothus spp.	Ceanothus sp.		Beardtongues	Penstemon spp
	Blue Eyed Grass	Sisyrinchium angustifolium		Channel Islands Tree Poppy	Dendromecon harfordii		Blue Elderberry	Sambucus mexicanus
	Boojum	Fouquieria columnaris		Coral bells	Heuchera spp		CA Sunflower	Helianthus californicus
	CA Buckwheat	Eriogonum fasciculatum		Currant / Fuschia Flower Gooseberry	Ribes spp.		CA Wildrose	Rosa californica
	Chuparosa	Justicia californica		Foxtail Agave	Agave attenuata		California Aster	Corethrogyne filaginifolia
	Datilillo Yucca	Yucca valida		Hummingbird sage	Salvia spathacea		California Sagebrush	Artemisia californica
	Desert Apricot	Prunus fremontii		Island Bush Poppy	Dendromecon rigida		Cleveland sage hybrids	Salvia 'Pozo Blue'
	Desert Fan Palm	Washingtonia filifera		Snow berry	Symphoricarpos alba		Deerweed	Acmispon glaber
	Desert Globemallow	Sphaeralcea ambigua		Western Swordfern	Polystichum munitum		Grape Soda Lupine	Lupinus excubitus
	Field Sedge	Carex praegracilis		Agave	Agave spp. (Entrance)		Jojoba	Simmondsia chinensis
	Giant Cardon	Pachycereus pringlei		Basket rush	Juncus textilis		Lemmon's Marigold	Tagetes lemonii
	Giant Chain Fern	Woodwardia fimbriata		Beardtongues	Penstemon spp		Lemonade Berry	Rhus integrifolia
	Mexican Blue Palm	Brahea armata		Buckthorn	Rhamnus spp		Lewis' Mock Orange	Philadelphus lewisii
	Nodding Needle Grass	Stipa cernua		CA Sunflower	Helianthus californicus		Mexican bush sage	Salvia lucantha
	Pacific Coast Iris	Iris Sp.		CA Wildrose	Rosa californica		Mexican holdback	Ceasalpinia mexicana
	Palo Verde	Parkinsonia sp.		California Sagebrush	Artemisia californica		Mint species	Salvia spp
	Pink Fairy Duster	Calliandra eriophylla		Cleveland sage hybrids	Salvia 'Pozo Blue'		Mock orange	Philadelphus lewisii
	Pink Hair Grass	Muhlenbergia capillaris		Coyote Brush	Baccharis pilularis		Monkeyflower	Erythranthe sp.
	Purple Three-awn	Aristida purpurea		Deerweed	Acmispon glaber		Nolina	Nolina sp.
	Western Swordfern	Polystichum munitum		Grape Soda Lupine	Lupinus excubitus		Parish's Rabbitbrush	Ericameria parishii
	Britton's Dudleya	Dudleya brittonii		Jojoba	Simmondsia chinensis		Pearly Everlasting	Symphoricarpos alba
	Coast Cholla	Cylindropuntia prolifera		Lemmon's Marigold	Tagetes lemonii		Sages (variety)	Salvia sp.
	Dahlia Root Cereus	Peniocereus striatus		Mexican holdback	Ceasalpinia mexicana		Showy Snapdragon	Galvezia speciosaii
	Elephant Tree	Bursera microphylla		Mint species	Salvia spp		Small Leaved Rose	Rosa minutifolia
	Fingertips	Dudleya edulis		Mock orange	Philadelphus lewisii		Torrey's Hybrid Oak	Quercus acutidens
	Golden spine cereus	Bergerocactus emoryi		Monkeyflower	Erythranthe sp.		Wild cucumber/ Chilicothe	Marah macrocarpa
	Ocotillo	Fouquieria splendens		Nolina	Nolina sp.		Wishbone Bush	Mirabilis sp.
	Plumeria	Plumeria rubra		Parish's Rabbitbrush	Ericameria parishii		Yucca	Yucca spp.
	Spurge	Euphorbia xanti		Pearly Everlasting	Symphoricarpos alba	North Shade Garden	Bee Plant	Scrophularia californica
Pollinator Garden	Baja Fairy Duster	Calliandra californica		Sages (variety)	Salvia sp.		Catalina Currant	Ribes viburnifolium
	Burgandy Deserte Willow	Chilopsis burgandy		Showy Snapdragon	Galvezia speciosaii		Coral Bells	Heuchera spp
	Bush Anemone	Carpenteria californica		Small Leaved Rose	Rosa minutifolia		Desert Fan Palm	Washingtonia filifera
	CA Coffee Berry	Rhamnus californica		Torrey's Hybrid Oak	Quercus acutidens		Desert Wild Grape	Vitis girdiana
	CA Everlasting	Pseudognaphalium californium		Wild cucumber/ Chilicothe	Marah macrocarpa		Desert Willow	Chilopsis linearis
	CA Lilac; Ceanothus	Ceanothus spp.		Wishbone Bush	Mirabilis sp.		Giant Chain Fern	Woodwardia fimbriata
	CA Poppy	Eschscholzia californica		Yucca	Yucca spp.		Gooseberry	Ribes speciosum
	CA Sunflower	Helianthus californicus					Guadalupe Island Palm	Brahea edulis
	Desert Willow	Chilopsis linearis					Heartleaf penstemon	Keckiella cordifolia
	Golden Yarrow	Achillea millefolium					Honeysuckle	Subspecata denidada
	Golden Yarrow	Eriophyllum confertiflorum					Mahonia	Mahonia spp
	Lavatera	Lavatera assurgentiflora					Mexican Blue Palm	Brahea armata
	Manzanita	Arctostaphylos spp					Mexican Fan Palm	Washingtonia robusta
	Mint species	Salvia clevelandii					Miner's Lettuce	Claytonia perfoliata
	Penstemon	Penstemon spp.					Monkeyflower	Eryranthe cardinalis
	San Diego Co. Sunflower	Viguiera lacinata					Narrow Leaved Bedstraw	Galium angustifolium
	Sticky Monkey Flower	Mimulus aurantiacus					Narrow-leaf milkweed	Asclepias fascicularis
	Yellow Trumpetbush	Tecoma stans					Scrub Oak	Quercus berberidifolia
	Asclepias californica	California Milkweed					Spiney Rush	Juncus acutus
							Western Swordfern	Polystichum munitum
							Western Sycamore	Platanus racemosa
							Yerba Mansa	Anemopsis californica



SPURLOCK

SEPTEMBER 20, 2021 LANDSCAPE ARCHITECTS

CITY OF SAN DIEGO PARK AND RECREATION DEPARTMENT

THE GENERAL DEVELOPMENT PLAN

SAN DIEGO NATURAL

HISTORY MUSEUM

EXTERIOR LANDSCAPE IMPROVEMENTS

SHEET 3 OF 3

PSD

LAMBERT COORDINATES: THOMAS BROTHERS PAGE: (PSD #)



THE CITY OF SAN DIEGO

M E M O R A N D U M

DATE: September 10, 2021

TO: Charles Daniels, Parks Planner, Parks and Recreation Department

FROM: Suzanne Segur, Senior Planner, Historical Resources, Development Services Department

SUBJECT: **Natural History Museum General Development Plan**

---

I am in receipt of your email dated September 9, 2021 requesting historic resources staff approval of a landscape improvement project at Balboa Park's Natural History Museum, designated as Historical Resources Board (HRB) Site #1. I have reviewed the email and attachments consisting of improvement plans and a staff report to the Balboa Park Committee and have found the project to be in conformance with the U.S. Secretary of the Interior's Standards for Rehabilitation of a historic property. Specifically, the following scope of work has been reviewed and approved as consistent with the Standards:

- New drought tolerant landscape organized into five new gardens
- New decomposed granite walkways
- Installation of new site furniture including planters and benches
- New low site wall

The September 9 email and related attachments will be included in the designation file, along with a copy of this memo, as a record of our review and approval. Please note that any and all changes to the project scope or any repair or modifications to the structure not anticipated and addressed in your submittal, will need to be reviewed and approved by our staff for consistency with the Standards prior to those changes or work being carried out.

Please let me know if you have any questions. I can be reached at 619.236.6139 or by email at [ssegur@san-diego.gov](mailto:ssegur@san-diego.gov). Thank you.

A handwritten signature in blue ink, appearing to read "Suzanne Segur", written over a horizontal line.

Suzanne Segur

cc: Designation File for HRB Site #1