

Parks and Recreation Department

Balboa Park Natural History Museum General Development Plan

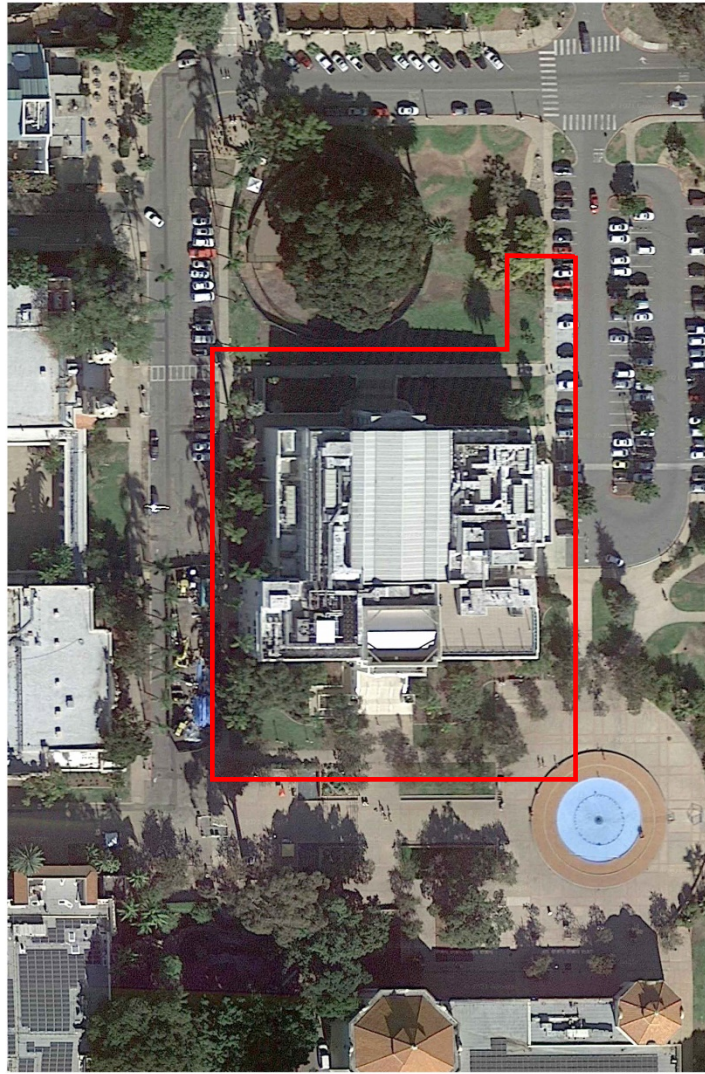
Park and Recreation Board

October 21, 2021

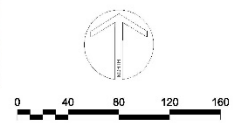
Item 103

Requested Action

- Should the Park and Recreation Board recommend approval of the proposed General Development Plan for Balboa Park's Natural History Museum?



Aerial Photograph



750 B Street
Suite 1620
San Diego,
California 92101
619.236.0143

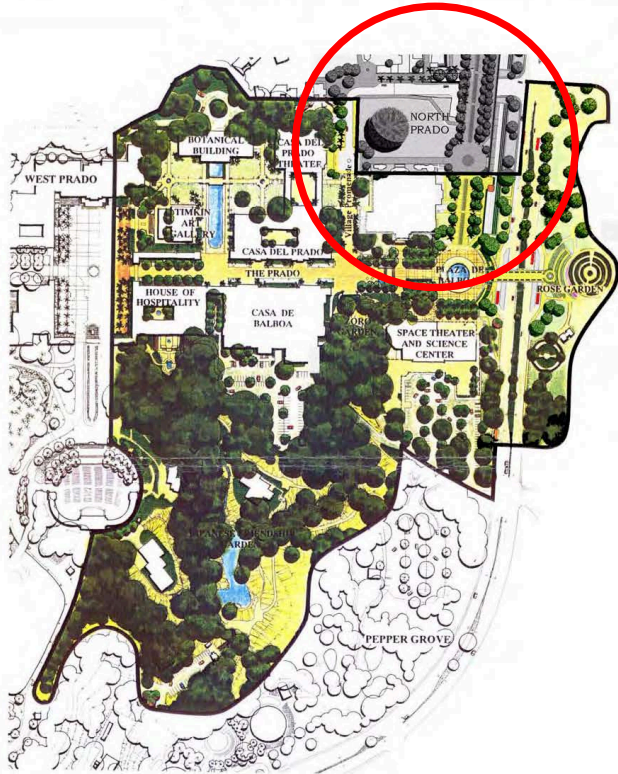
SPURLOCK
LANDSCAPE ARCHITECTS

AUGUST 18, 2021
CITY OF SAN DIEGO PARK AND RECREATION DEPARTMENT

THE GENERAL DEVELOPMENT PLAN
**SAN DIEGO NATURAL
HISTORY MUSEUM**
EXTERIOR LANDSCAPE IMPROVEMENTS
SHEET 2 OF 3

PSD
(PSD #)

BALBOA PARK - CENTRAL MESA PRECISE PLAN



East Prado revised May 2003 30

Trees	Lawn
Groundcovers	Paved Pedestrian Areas

SCALE IN FEET

ESRDA Land Planning

153

BALBOA PARK - CENTRAL MESA PRECISE PLAN



North Prado revised May 2003 31

Trees	Lawn
Groundcovers	Paved Pedestrian Areas

SCALE IN FEET

ESRDA Land Planning

157

GOALS

Land Use

Provide a wide variety of cultural activities within a public park environment.

Circulation

Establish a pedestrian park environment that features public transportation use while providing adequate vehicular access to and within the Central Mesa.

Architecture

Rehabilitate and modify the architecture of the Central Mesa in a manner which preserves its historic and aesthetic significance while providing for functional needs.

Landscape

Rehabilitate and modify the Central Mesa's landscape in a manner which preserves its historic significance, accommodates a wide variety of public park activities and increases public enjoyment of the Park environment.

Management

Develop and implement an effective management program that promotes maximum public use and enjoyment of the Park.

Maintenance

Develop and fund a maintenance program that will protect the public investment in buildings and grounds and facilitate maximum public enjoyment of the Park.

Landscape

Rehabilitate and modify the Central mesa's landscape in a manner which preserves its historic significance, accommodates a wide variety of public park activities, and increases public enjoyment of the Park environment.



LANDSCAPE

The goal of this section is to restore, rehabilitate and modify the Central Mesa's landscape in a manner that preserves its historic significance, accommodates a wide variety of public park activities and increases public enjoyment of the Park environment.

The landscape of the Central Mesa includes all outdoor spaces such as plazas, promenades, arcades, gardens and naturalized areas. There are three generalized park use areas that influence the proposed landscape treatments.

Multiple use and outdoor attraction areas (See Figure 45) - These will be the most heavily used areas of the Central Mesa and will include cultural and park uses, including open air concerts, outdoor exhibits and informal picnic and play areas. Emphasis will be placed on a high level of detail, generous site amenities, quality materials, comprehensive signage, decorative lighting, and ornamental plant materials. The most prominent landscape features in this area will consist of multiple use plazas that can serve the majority of the time as pleasant, relaxing outdoor public spaces and also facilitate a full spectrum of special public events.

Picnic and Open Play Areas (See Figure 46) - These areas possess the overall landscape character of a traditional public park and include features such as open lawns, children's play equipment and picnic tables. These areas will receive additional lighting, improved restroom facilities and increased site amenities, but will not be developed as intensively as the multiple use and outdoor attraction areas.

Natural Use Areas (See Figure 47) - These portions of the Central Mesa will remain as a refuge for passive uses such as hiking and observation of plants and wildlife. These areas will form an important link in a regional network of urban buffer corridors that provide habitat for native flora and fauna. An improved trail system with interpretive material are proposed for these areas of the Park.

In all landscaped areas for the Central Mesa, public safety will be emphasized by providing increased lighting, clear sightlines, and an expanded number of well used public spaces that displace undesirable activities.

Landscaped areas in the Central Mesa will allow for maximum public accessibility and flexibility of use. They should offer comfort, security and positive visual stimulation to every visitor.

All landscape design in the Central Mesa is based on historic precedent. Wherever possible, historic conditions are preserved or restored. Where new features must be incorporated, they complement, respect and support both the original design intent and the existing historic features that remain.

All landscape design in the Central Mesa is based on historic precedent. Wherever possible, historic conditions are preserved or restored. Where new features must be incorporated, they complement, respect and support both the original design intent and the existing historic features that remain.



Lawn medians can be replaced with ground cover to conserve water.



Lawns provide for picnic and play even in settings that are less than ideal.

- Landscape planting should be designed to conserve water as much as possible.

Lawns that serve a primarily decorative function in small areas such as a street median planting should be phased out and replaced with drought tolerant low shrubs or groundcover. Larger areas of lawn that contribute visually or functionally to the park experience should be retained.

Ornamental plantings with high water requirements should be located in high visual impact areas such as major plazas, promenades, and formal gardens.

- Plants with similar water requirements should be grouped together.
- Exotic plants that have relatively low water requirements should be used as much as possible. For example, Giant Bird of Paradise would be preferable to Banana species because of its similar appearance and lower water requirements.
- Installation of small planting beds surrounded by large paved areas should be discouraged.
- Existing landscape character and historic landscape themes should continue despite periodic drought conditions.

A public park is traditionally a place where people can go to experience a landscape that they cannot afford to individually possess. The Central Mesa is a botanical resource with a long history of displaying to residents and visitors alike the best outdoor environment San Diego has to offer. Even when regional drought conditions occur, Balboa Park should continue to serve as a botanical oasis whose wide lawns and exotic flora can refresh, educate and inspire those who visit. Areas of priority water use in the Central Mesa are shown in Figure 48.

- Existing significant plants and trees should be protected and well cared for. Significant plants and trees which must be moved should be relocated to other Central mesa locations with similar superior growing conditions. They should be moved during the winter months to help insure their survival. The significant plants and trees identified for relocation during the Precise Plan process are listed in the following table. The number preceding the name is the location number as shown in Figure 49. This number also appears in the Plant Inventory List located in the Landscape Analysis section. The number following the name is the documented quantity of trees to be relocated.

Plants to be Relocated:

#7	Alectryon excelsus NCN	(8)
#20	Brahea brandegeei x edulis Brahea Hybrid	(7)
#42	Erythrina caffra Kaffirboom Coral Tree	(1)

Planting Design Guidelines

Landscape planting should be designed to conserve water as much as possible.

Lawns that serve a primarily decorative function in small areas such as street median planting should be phased out and replaced with drought tolerant low shrubs or groundcover.

•BALBOA PARK•CENTRAL MESA PRECISE PLAN

Precise Plan - Landscape

- Landscape planting areas will be divided into three general areas of emphasis.

- **Botanical Emphasis Areas** (see Figure 50)

Plant materials generally should be arranged formally in major plazas and promenades. They should be arranged informally in other areas such as lawns, canyons, and parking lots.

Plant materials that possess the following characteristics should be included in these areas.

- Exotic plant species that take full advantage of San Diego's mild climate.
- A lush, tropical appearance.
- Plants that are particularly associated with San Diego or were popularized because of their appearance in the 1915 Exposition.

The Park Boulevard Promenade is in the Botanical Emphasis Area, but plants for this area should be selected with care because of the parking structure below. Factors to take in consideration when choosing on-structure plants include: amount of leaf and fruit drop, reaction to acid/alkaline soils, root hardness, and root growth characteristics. Despite these constraints, the overall impact of the planting on the Park Boulevard Promenade should be a lush, tropical appearance as found in the rest of the Botanical Emphasis areas. Planting should include large, mature-canopy trees, palm trees, accent shrubs, and annual flowers. More detailed information on the planting on Park Boulevard Promenade is included in the Specific Recommendations section.

Representative species for this area:

Trees [underlined in original]

Phoenix reclinata – Senegalese Date Palm*

Brahea brandegeei – San Jose Hesper Palm

Arecastrum romansoffianum – Queen Palm*

Archontophoenix cunninghamiana – King Palm*

Erythrina 'skyesii' – Skyes' Coral Tree

Alcetryon excelsum – Alcetryon*

Eucalyptus degulpta – Mindinao Gum

Livistona decipiens – Ribbon Fan Palm*

Bischofia javanica – Toong Tree

Ficus microcarpa – Indian Laurel Fig

Ficus macrophylla – Moreton Bay Fig

Chorisa speciosa – Floss Silk Tree

Stenocarpus sinuatus – Firewheel Tree*

Brahea edulis – Guadalupe Fan Palm

Dombeya cacuminum – Dombeya

Neodypsis decaryi – Triangle Palm*

Markhamia hildebrandtii – Markhamia*

- *Exotic plant species that take full advantage of San Diego's mild climate.*
- *A lush, tropical appearance.*
- *Plants that are particularly associated with San Diego or were popularized because of their appearance in the 1915 Exposition.*

Other Recommendations

On October 7, 2021 the Balboa Park Committee voted unanimously (9-0-0) advising the proposed GDP is consistent with Balboa Park planning documents and recommending approval of the proposed GDP.

Staff Recommendation

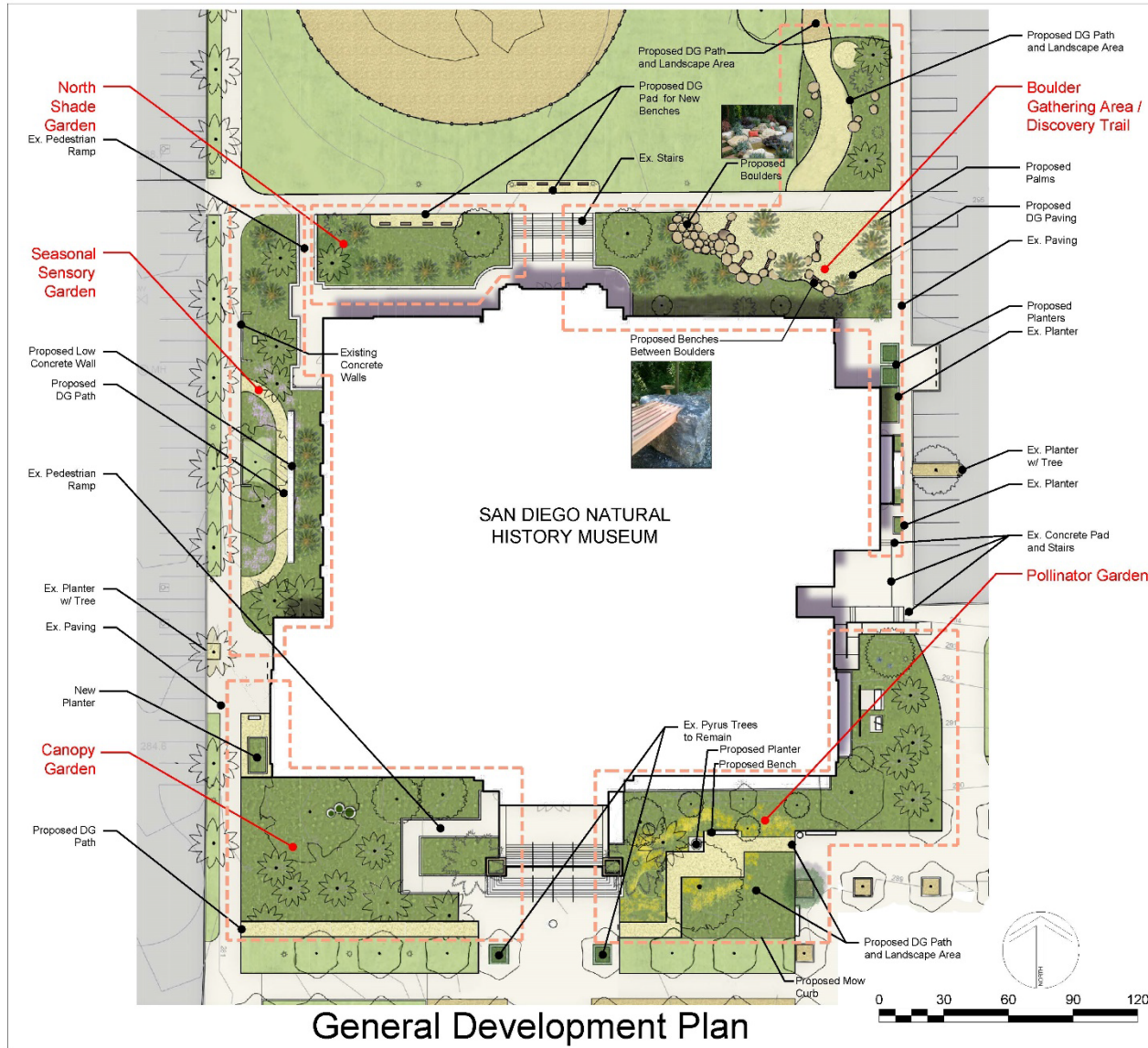
Recommend approval of the proposed General Development Plan

The General Development Plan

Vicki Estrada

Principal

Estrada Land planning



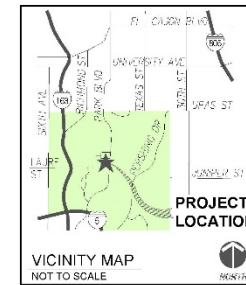
General Development Plan

Design Concept

Set within the diverse cultural campus of Balboa Park at the eastern end of the Prado with views to Florida Canyon beyond, The Nat's location is uniquely well-suited to engage the wide range of Park visitors and demonstrate The Nat's Mission "...to promote understanding of the evolution and diversity of southern California and the peninsula of Baja California; and to inspire in all a respect for nature and the environment". The formal arrangement of Balboa Park's promenades and buildings among the meandering fingers of canyons and mesas makes a rich context for The Nat's message.

The Landscape Master Plan includes gardens and outdoor gathering spaces located around The Nat building perimeter.

All new PAVING will be permeable Decomposed Granite (DG).
All Historically Significant Trees to Remain.



SPURLOCK

SEPTEMBER 10, 2021 LANDSCAPE ARCHITECTS
CITY OF SAN DIEGO PARK AND RECREATION DEPARTMENT
THE GENERAL DEVELOPMENT PLAN
SAN DIEGO NATURAL HISTORY MUSEUM
EXTERIOR LANDSCAPE IMPROVEMENTS
SHEET 1 OF 3
PSD (PSD #)

Plant Legend

Plants such as:

	Common Name	Scientific Name		Common Name	Scientific Name		Common Name	Scientific Name			
Boulder Gathering Area/ Discovery Trail	Bladderpod	Peritoma arborea	Canopy Garden	Canyon grey	Artemisia californica 'montara'	Seasonal Sensory Garden	Agave	Agave spp. (Entrance)			
	Blue dicks	Dichelostemma capitatum		Ceanothus spp.	Ceanothus sp.		Penstemon spp	Beardtongues	Penstemon spp		
	Blue Eyed Grass	Sisyrinchium angustifolium		Channel Islands Tree Poppy	Dendromecon harfordii		Sambucus mexicana	Blue Elderberry	Sambucus mexicana		
	Boojum	Fouquieria columnaris		Coral bells	Huchera spp		Helianthus californicus	CA Sunflower	Helianthus californicus		
	CA Buckwheat	Eriogonum fasciculatum		Gurrant / Fuschia Flower Gooseberry	Ribes spp.		Rosa californica	CA Wildrose	Rosa californica		
	Chuparosa	Justicia californica		Foxtail Agave	Agave attenuata		Corethrogyne flaginifolia	California Aster	Corethrogyne flaginifolia		
	Datillio Yucca	Yucca valida		Hummingbird sage	Salvia spathacea		Artemisia californica	California Sagebrush	Artemisia californica		
	Desert Apricot	Prunus fremontii		Island Bush Poppy	Dendromecon rigida		Salvia 'Pojo Blue'	Cleveland sage hybrids	Salvia 'Pojo Blue'		
	Desert Fan Palm	Washingtonia filifera		Snow berry	Symphoricarpos alba		Acemison glaber	Deerweed	Acemison glaber		
	Desert Globemallow	Sphaeralcea ambigua		Western Swordfern	Polystichum munium		Lupinus excubitus	Grape Soda Lupine	Lupinus excubitus		
	Field Sedge	Carex praegracilis		Agave	Agave spp. (Entrance)		Simmondsia chinensis	Jobba	Simmondsia chinensis		
	Giant Cardon	Pachycereus pringlei		Basket rush	Juncus textilis		Tagetes lemonii	Lemmon's Marigold	Tagetes lemonii		
	Giant Chain Fern	Woodwardia fimbriata		Beardtongues	Penstemon spp		Rhus integrifolia	Lemonade Berry	Rhus integrifolia		
	Mexican Blue Palm	Brahea armata		Buckthorn	Rhamnus spp		Philadelphus lewisii	Lewis' Mock Orange	Philadelphus lewisii		
	Nodding Needle Grass	Stipa cernua		CA Sunflower	Helianthus californicus		Salvia lucantha	Mexican bush sage	Salvia lucantha		
	Pacific Coast Iris	Iris Sp.		CA Wildrose	Rosa californica		Ceasalpinia mexicana	Mexican holdback	Ceasalpinia mexicana		
	Palo Verde	Parkinsonia sp.		California Sagebrush	Artemisia californica		Salvia spp	Mint species	Salvia spp		
	Pink Fairy Duster	Calliandra eriophylla		Cleveland sage hybrids	Salvia 'Pojo Blue'		Philadelphus lewisii	Mock orange	Philadelphus lewisii		
	Pink Hair Grass	Muhlenbergia capillaris		Coyote Brush	Baccharis pilularis		Erythranthe sp.	Monkeyflower	Erythranthe sp.		
	Purple Three-awn	Aristida purpurea		Deerweed	Acemison glaber		Nolina	Nolina	Nolina sp.		
	Western Swordfern	Polystichum munium		Grape Soda Lupine	Lupinus excubitus		Parish's Rabbitbrush	Parish's Rabbitbrush	Ericameria parishii		
	Britton's Dudleya	Dudleya brittonii		Jobba	Simmondsia chinensis		Pearly Everlasting	Pearly Everlasting	Symphoricarpos alba		
	Coast Cholla	Cylindropuntia prolifera		Lemmon's Marigold	Tagetes lemonii		Sages (variety)	Sages (variety)	Salvia sp.		
	Nahla Root Cereus	Peniocereus striatus		Mexican holdback	Ceasalpinia mexicana		Showy Snapdragon	Showy Snapdragon	Galvezia speciosa		
	Elephant Tree	Bursera microphylla		Mint species	Salvia spp		Small Leaved Rose	Small Leaved Rose	Rosa minutifolia		
	Fingertips	Dudleya edulis		Mock orange	Philadelphus lewisii		Torrey's Hybrid Oak	Torrey's Hybrid Oak	Quercus acutidens		
	Golden spine cereus	Bergerocactus emoryi		Monkeyflower	Erythranthe sp.		Wild cucumber/ Chilicothe	Wild cucumber/ Chilicothe	Marah macrocarpa		
	Ocotillo	Fouquieria splendens		Nolina	Nolina sp.		Wishbone Bush	Wishbone Bush	Mirabilis sp.		
	Plumeria	Plumeria rubra		Parish's Rabbitbrush	Ericameria parishii		Yucca	Yucca	Yucca spp.		
	Spurge	Euphorbia xanti		Pearly Everlasting	Symphoricarpos alba						
	Pollinator Garden	Baja Fairy Duster		Calliandra californica					North Shade Garden	Bee Plant	Scrophularia californica
		Burgandy Deserte Willow		Chilopsis burgandy						Catalina Currant	Ribes viburnifolium
		Bush Anemone		Carpenteria californica						Coral Bells	Heuchera spp
CA Coffee Berry		Rhamnus californica				Desert Fan Palm	Washingtonia filifera				
CA Everlasting		Pseudognaphalium californium				Desert Wild Grape	Vitis girdiana				
CA Lilac, Ceanothus		Ceanothus spp.				Desert Willow	Chilopsis linearis				
CA Poppy		Eschscholzia californica				Giant Chain Fern	Woodwardia fimbriata				
CA Sunflower		Helianthus californicus				Gooseberry	Ribes speciosum				
Desert Willow		Chilopsis linearis				Guadalupe Island Palm	Brahea edulis				
Golden Yarrow		Achillea millefolium				Heartleaf penstemon	Keckiella cordifolia				
Golden Yarrow		Eriophyllum confertiflorum				Honeysuckle	Subspecata denidada				
Lavatera		Lavatera assurgentiflora				Mahonia	Mahonia spp				
Manzanita		Arctostaphylos spp				Mexican Blue Palm	Brahea armata				
Mint species		Salvia clevelandii				Mexican Fan Palm	Washingtonia robusta				
Penstemon		Penstemon spp.				Miner's Lettuce	Claytonia perfoliata				
San Diego Co. Sunflower		Viguiera lacinata				Monkeyflower	Eryranthe cardinalis				
Sticky Monkey Flower		Mimulus aurantiacus				Narrow Leaved Bedstraw	Galium angustifolium				
Yellow Trumpetbush		Tecoma stans				Narrow-leaf milkweed	Asclepias fascicularis				
Aesepias californica		California Milkweed				Scrub Oak	Quercus berberidifolia				
						Spiney Rush	Juncus acutus				
						Western Swordfern	Polystichum munium				
					Western Sycamore	Platanus racemosa					
					Yerba Mansa	Anemopsis californica					



SPURLOCK

SEPTEMBER 20, 2021 LANDSCAPE ARCHITECTS

CITY OF SAN DIEGO PARK AND RECREATION DEPARTMENT

THE GENERAL DEVELOPMENT PLAN

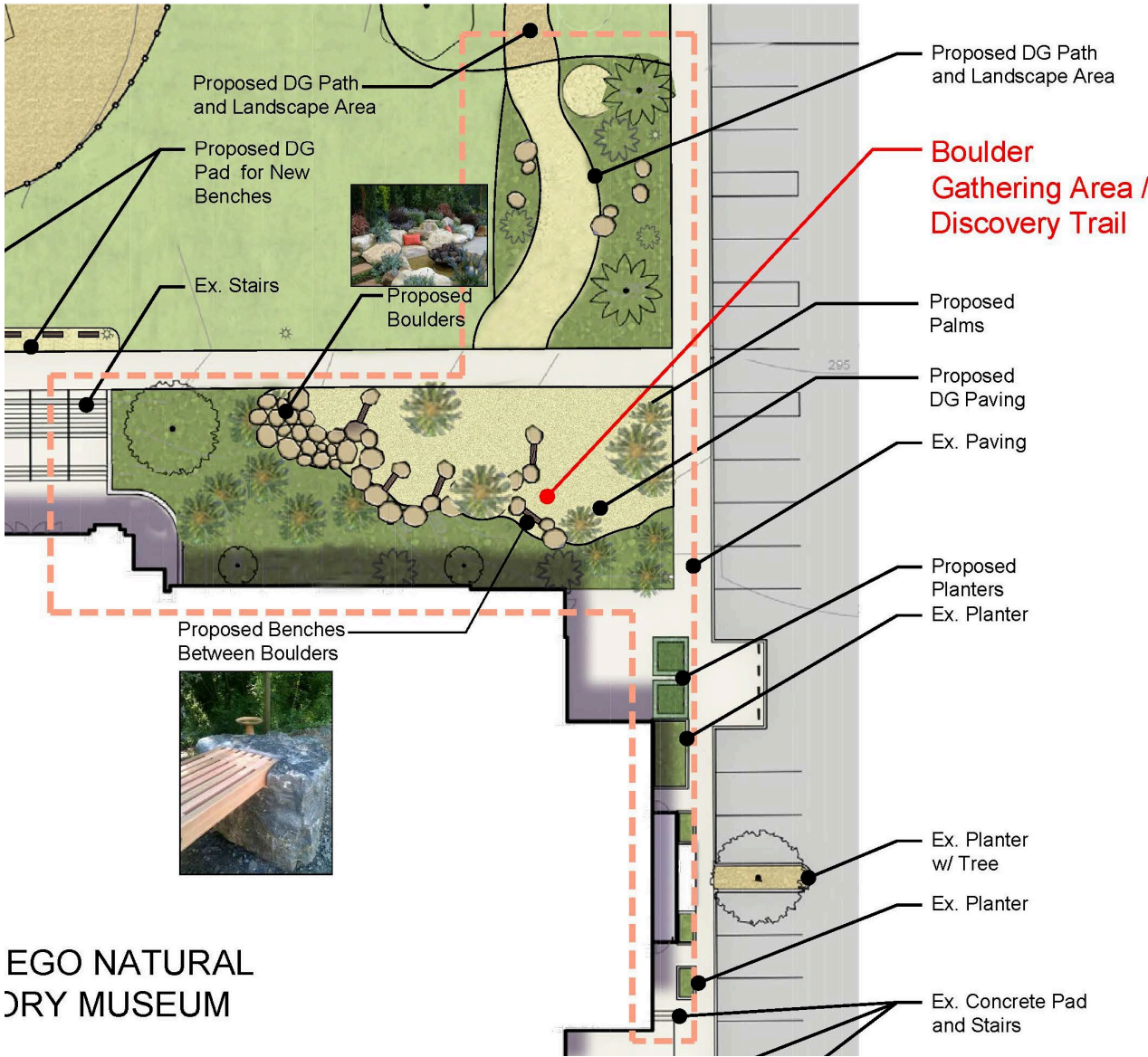
SAN DIEGO NATURAL HISTORY MUSEUM

EXTERIOR LANDSCAPE IMPROVEMENTS

SHEET 3 OF 3

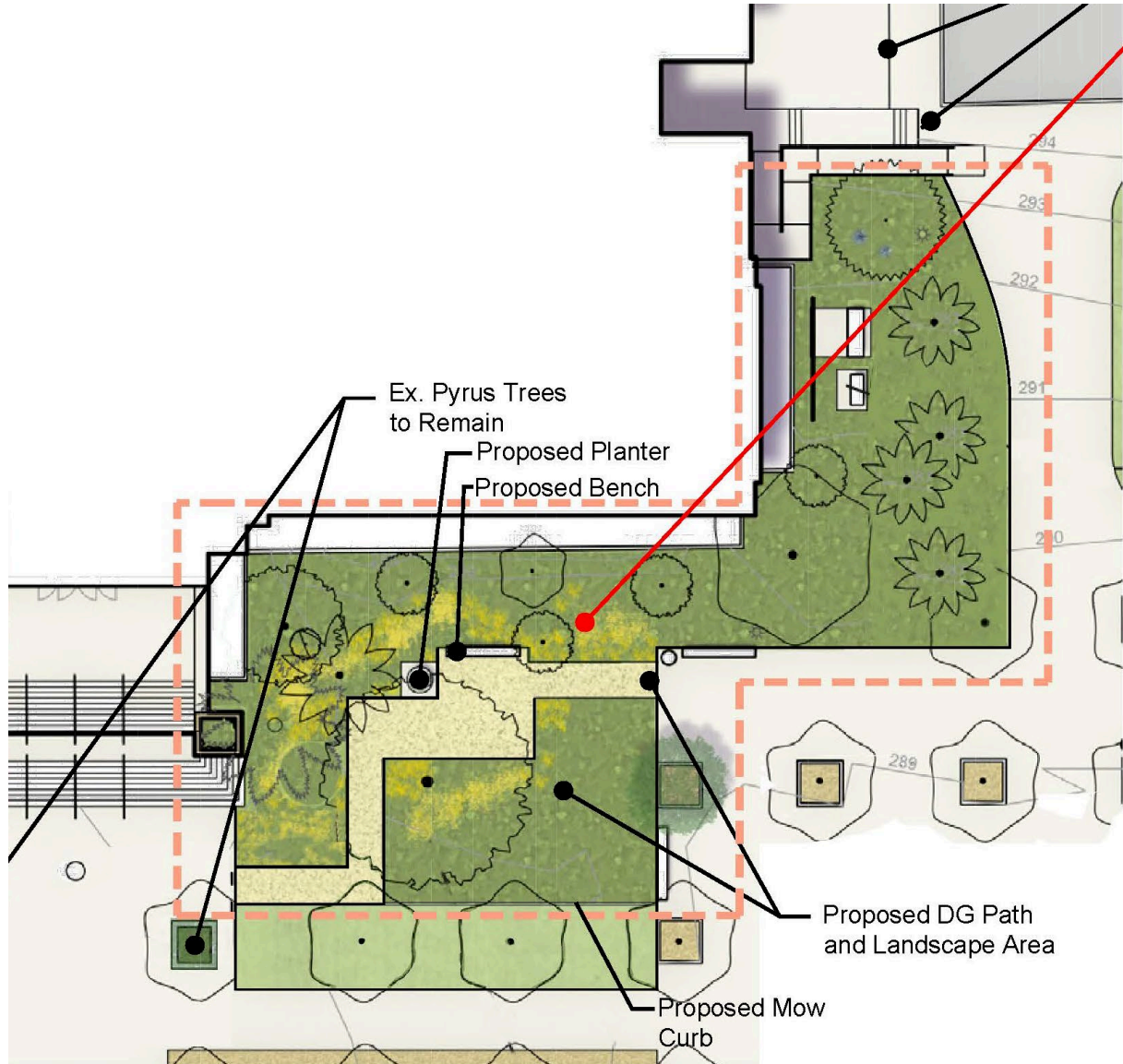
PSD (PSD #)

LAUREN COOPERATED THOMAS BRECHERS PAGE



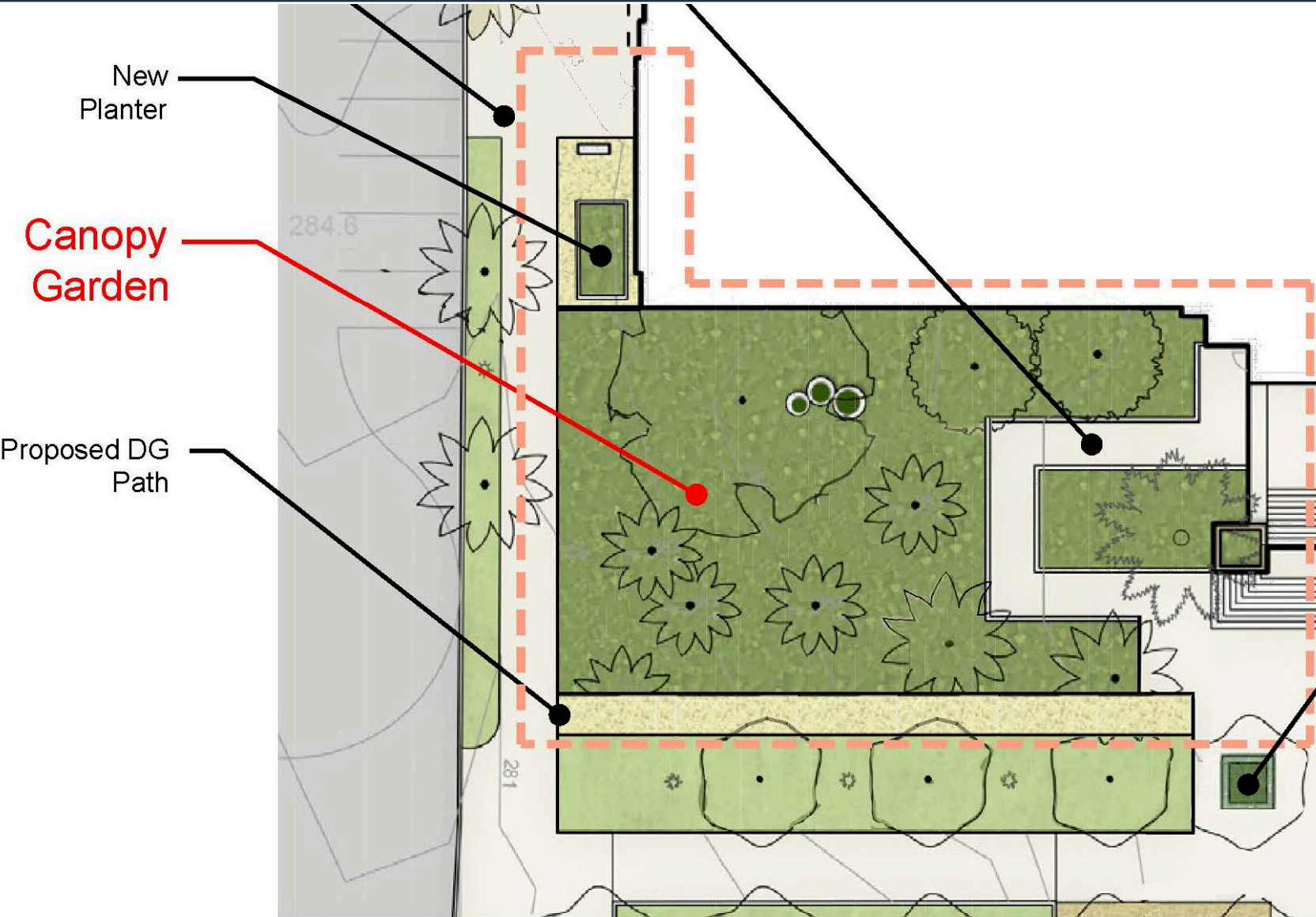
Boulder Gathering Area/ Discovery Trail		
	Bladderpod	Peritoma arborea
	Blue dicks	Dichelostemma capitatum
	Blue Eyed Grass	Sisyrinchium angustifolium
	Boojum	Fouquieria columnaris
	CA Buckwheat	Eriogonum fasciculatum
	Chuparosa	Justicia californica
	Datilillo Yucca	Yucca valida
	Desert Apricot	Prunus fremontii
	Desert Fan Palm	Washingtonia filifera
	Desert Globemallow	Sphaeralcea ambigua
	Field Sedge	Carex praeegracilis
	Giant Cardon	Pachycereus pringlei
	Giant Chain Fern	Woodwardia fimbriata
	Mexican Blue Palm	Brahea armata
	Nodding Needle Grass	Stipa cernua
	Pacific Coast Iris	Iris Sp.
	Palo Verde	Parkinsonia sp.
	Pink Fairy Duster	Calliandra eriophylla
	Pink Hair Grass	Muhlenbergia capillaris
	Purple Three-awn	Aristida purpurea
	Western Swordfern	Polystichum munitum
	Britton's Dudleya	Dudleya brittonii
	Coast Cholla	Cylindropuntia prolifera
	Dahlia Root Cereus	Peniocereus striatus
	Elephant Tree	Bursera microphylla
	Fingertips	Dudleya edulis
	Golden spine cereus	Bergerocactus emoryi
	Ocotillo	Fouquieria splendens
	Plumeria	Plumeria rubra
	Spurge	Euphorbia xanti

EGO NATURAL
DRY MUSEUM

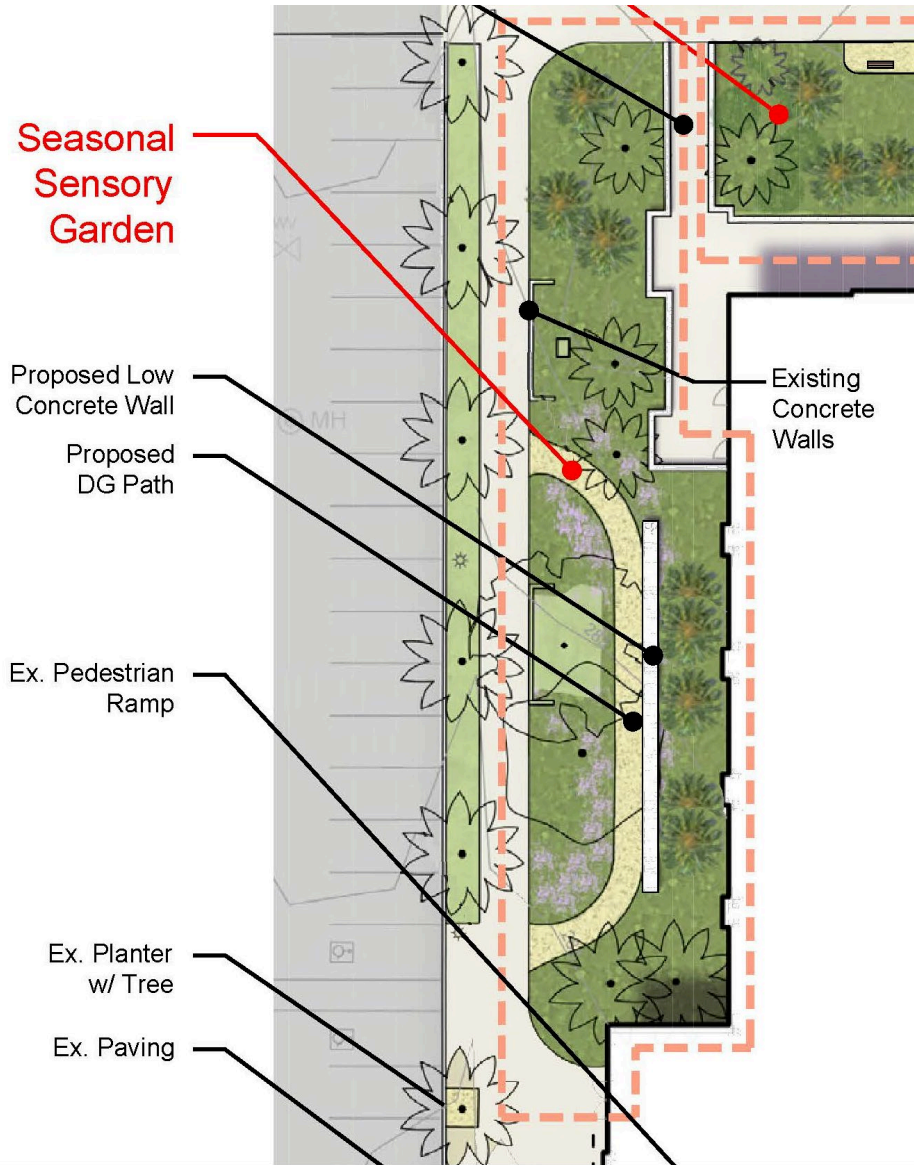


Pollinator Garden

Pollinator Garden		
Baja Fairy Duster	Caliandra californica	
Burgandy Deserte Willow	Chilopsis burgandy	
Bush Anemone	Carpenteria californica	
CA Coffee Berry	Rhamnus californica	
CA Everlasting	Pseudognaphalium californium	
CA Lilac; Ceanothus	Ceanothus spp.	
CA Poppy	Eschscholzia californica	
CA Sunflower	Helianthus californicus	
Desert Willow	Chilopsis linearis	
Golden Yarrow	Achillea millefolium	
Golden Yarrow	Eriophyllum confertiflorum	
Lavatera	Lavatera assurgentiflora	
Manzanita	Arctostaphylos spp	
Mint species	Salvia clevelandii	
Penstemon	Penstemon spp.	
San Diego Co. Sunflower	Viguiera lacinata	
Sticky Monkey Flower	Mimulus aurantiacus	
Yellow Trumpetbush	Tecoma stans	
Asclepias californica	California Milkweed	

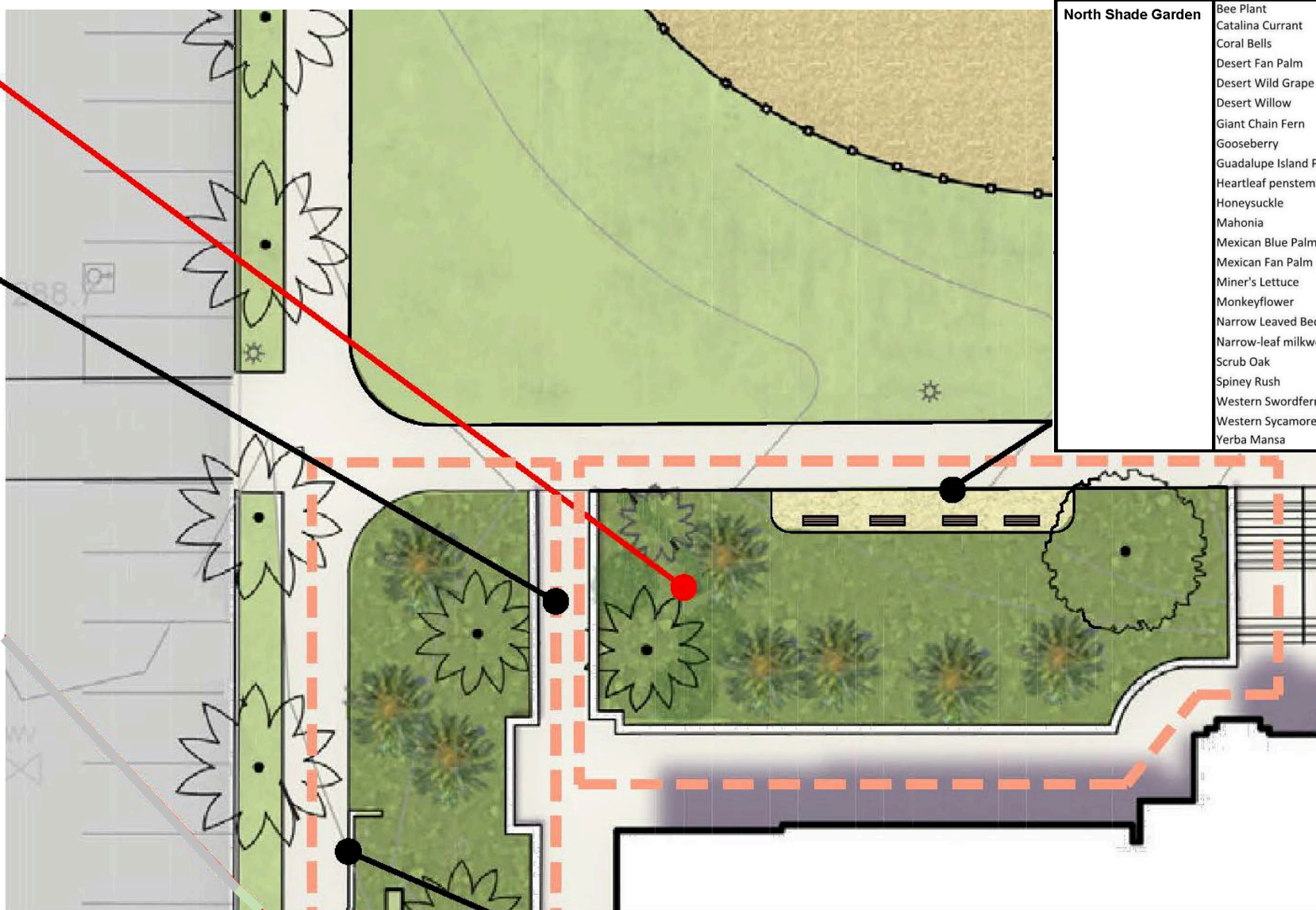


Canopy Garden		
Canyon grey	Artemisia californica 'montara'	
Ceanothus spp.	Ceanothus sp.	
Channel Islands Tree Poppy	Dendromecon harfordii	
Coral bells	Heuchera spp	
Currant / Fuschia Flower Gooseberry	Ribes spp.	
Foxtail Agave	Agave attenuata	
Hummingbird sage	Salvia spathacea	
Island Bush Poppy	Dendromecon rigida	
Snow berry	Symphoricarpos alba	
Western Swordfern	Polystichum munitum	
Agave	Agave spp. (entrance)	
Basket rush	Juncus textilis	
Beardtongues	Penstemon spp	
Buckthorn	Rhamnus spp	
CA Sunflower	Helianthus californicus	
CA Wildrose	Rosa californica	
California Sagebrush	Artemisia californica	
Cleveland sage hybrids	Salvia 'Poza Blue'	
Coyote Brush	Baccharis pilularis	
Deerweed	Acmispon glaber	
Grape Soda Lupine	Lupinus excubitus	
Jojoba	Simmondsia chinensis	
Lemmon's Marigold	Tagetes lemonii	
Mexican holdback	Ceasalpinia mexicana	
Mint species	Salvia spp	
Mock orange	Philadelphus lewisii	
Monkeyflower	Erythranthe sp.	
Nolina	Nolina sp.	
Parish's Rabbitbrush	Ericameria parishii	
Pearly Everlasting	Symphoricarpos alba	
Sages (variety)	Salvia sp.	
Showy Snapdragon	Galvezia speciosa	
Small Leaved Rose	Rosa minutifolia	
Torrey's Hybrid Oak	Quercus acutidens	
Wild cucumber/ Chilicothe	Marah macrocarpa	
Wishbone Bush	Mirabilis sp.	
Yucca	Yucca spp.	



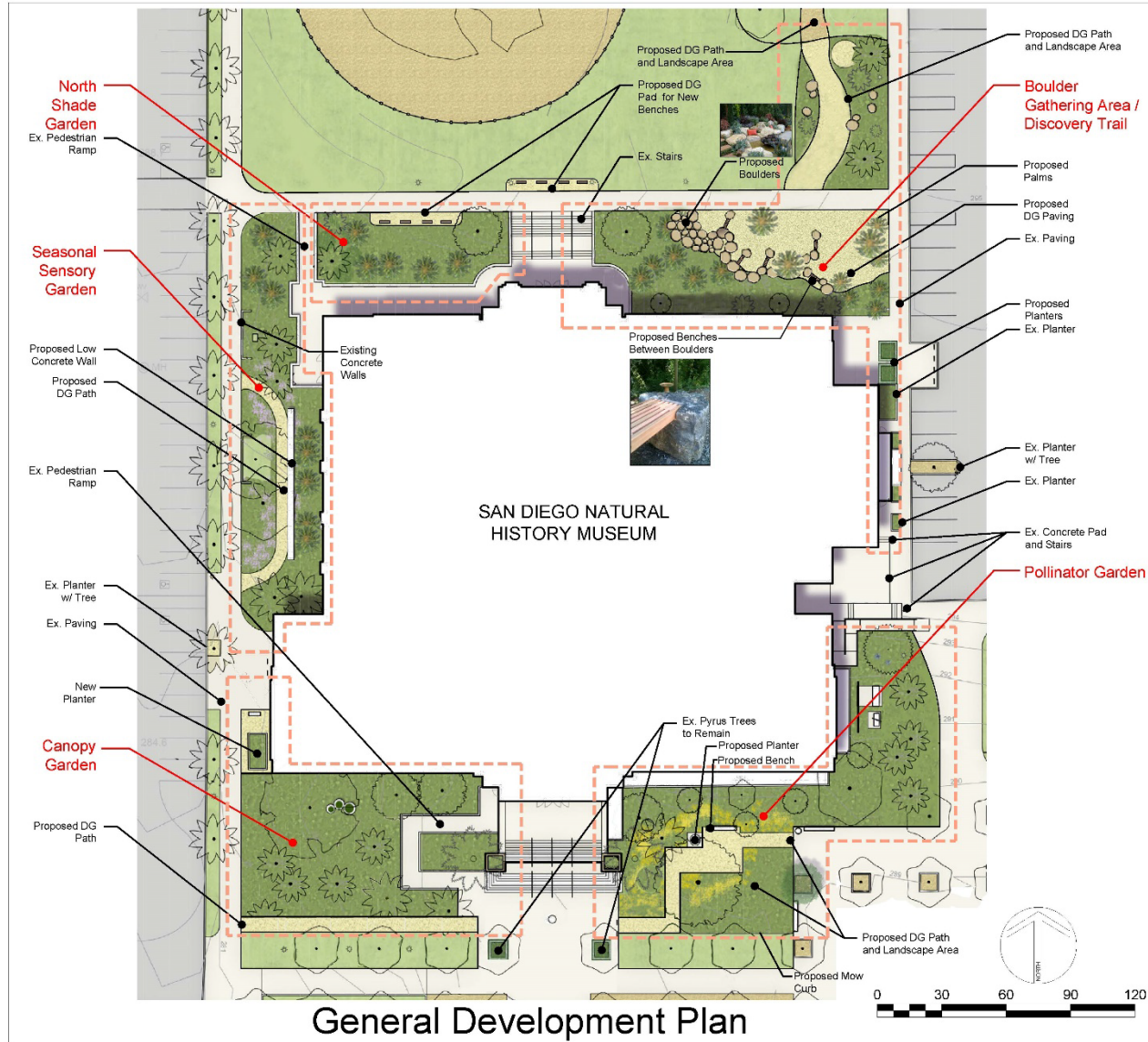
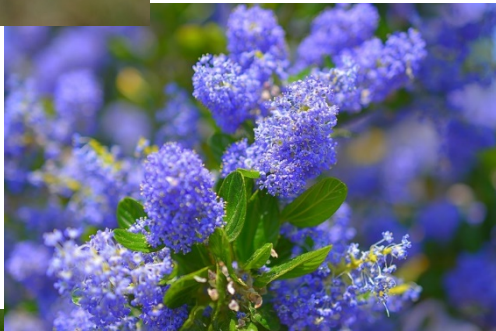
Seasonal Sensory Garden		
Agave	Agave spp. (Entrance)	Agave spp. (Entrance)
Beardtongues	Penstemon spp	Penstemon spp
Blue Elderberry	Sambucus mexicanus	Sambucus mexicanus
CA Sunflower	Helianthus californicus	Helianthus californicus
CA Wildrose	Rosa californica	Rosa californica
California Aster	Corethrogyne filaginifolia	Corethrogyne filaginifolia
California Sagebrush	Artemisia californica	Artemisia californica
Cleveland sage hybrids	Salvia 'Pozo Blue'	Salvia 'Pozo Blue'
Deerweed	Acmispon glaber	Acmispon glaber
Grape Soda Lupine	Lupinus excubitus	Lupinus excubitus
Jojoba	Simmondsia chinensis	Simmondsia chinensis
Lemmon's Marigold	Tagetes lemonii	Tagetes lemonii
Lemonade Berry	Rhus integrifolia	Rhus integrifolia
Lewis' Mock Orange	Philadelphus lewisii	Philadelphus lewisii
Mexican bush sage	Salvia lucanthea	Salvia lucanthea
Mexican holdback	Ceasalpinia mexicana	Ceasalpinia mexicana
Mint species	Salvia spp	Salvia spp
Mock orange	Philadelphus lewisii	Philadelphus lewisii
Monkeyflower	Erythranthe sp.	Erythranthe sp.
Nolina	Nolina sp.	Nolina sp.
Parish's Rabbitbrush	Ericameria parishii	Ericameria parishii
Pearly Everlasting	Symphoricarpos alba	Symphoricarpos alba
Sages (variety)	Salvia sp.	Salvia sp.
Showy Snapdragon	Galvezia speciosaii	Galvezia speciosaii
Small Leaved Rose	Rosa minutifolia	Rosa minutifolia
Torrey's Hybrid Oak	Quercus acutidens	Quercus acutidens
Wild cucumber/ Chilicothe	Marah macrocarpa	Marah macrocarpa
Wishbone Bush	Mirabilis sp.	Mirabilis sp.
Yucca	Yucca spp.	Yucca spp.

**North
Shade
Garden**
Ex. Pedestrian
Ramp



North Shade Garden		
Bee Plant	Scrophularia californica	
Catalina Currant	Ribes viburnifolium	
Coral Bells	Heuchera spp	
Desert Fan Palm	Washingtonia filifera	
Desert Wild Grape	Vitis girdiana	
Desert Willow	Chilopsis linearis	
Giant Chain Fern	Woodwardia fimbriata	
Gooseberry	Ribes speciosum	
Guadalupe Island Palm	Brahea edulis	
Heartleaf penstemon	Keckiella cordifolia	
Honeysuckle	Subspecata denidada	
Mahonia	Mahonia spp	
Mexican Blue Palm	Brahea armata	
Mexican Fan Palm	Washingtonia robusta	
Miner's Lettuce	Claytonia perfoliata	
Monkeyflower	Eryranthe cardinalis	
Narrow Leaved Bedstraw	Galium angustifolium	
Narrow-leaf milkweed	Asclepias fascicularis	
Scrub Oak	Quercus berberidifolia	
Spiney Rush	Juncus acutus	
Western Swordfern	Polystichum munitum	
Western Sycamore	Platanus racemosa	
Yerba Mansa	Anemopsis californica	

Questions?

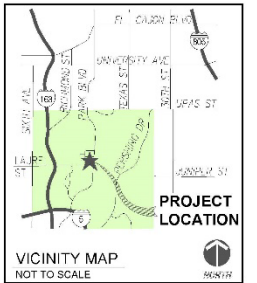


Design Concept

Set within the diverse cultural campus of Balboa Park at the eastern end of the Prado with views to Florida Canyon beyond, The Nat's location is uniquely well-suited to engage the wide range of Park visitors and demonstrate The Nat's Mission "...to promote understanding of the evolution and diversity of southern California and the peninsula of Baja California; and to inspire in all a respect for nature and the environment". The formal arrangement of Balboa Park's promenades and buildings among the meandering fingers of canyons and mesas makes a rich context for The Nat's message.

The Landscape Master Plan includes for gardens and outdoor gathering spaces located around The Nat building perimeter.

All new PAVING will be permeable Decomposed Granite (DG).
All Historically Significant Trees to Remain.



SPURLOCK
LANDSCAPE ARCHITECTS

SEPTEMBER 10, 2021

CITY OF SAN DIEGO PARKS AND RECREATION DEPARTMENT
THE GENERAL DEVELOPMENT PLAN
SAN DIEGO NATURAL HISTORY MUSEUM
EXTERIOR LANDSCAPE IMPROVEMENTS
SHEET 1 OF 3

PSD (PSD #)