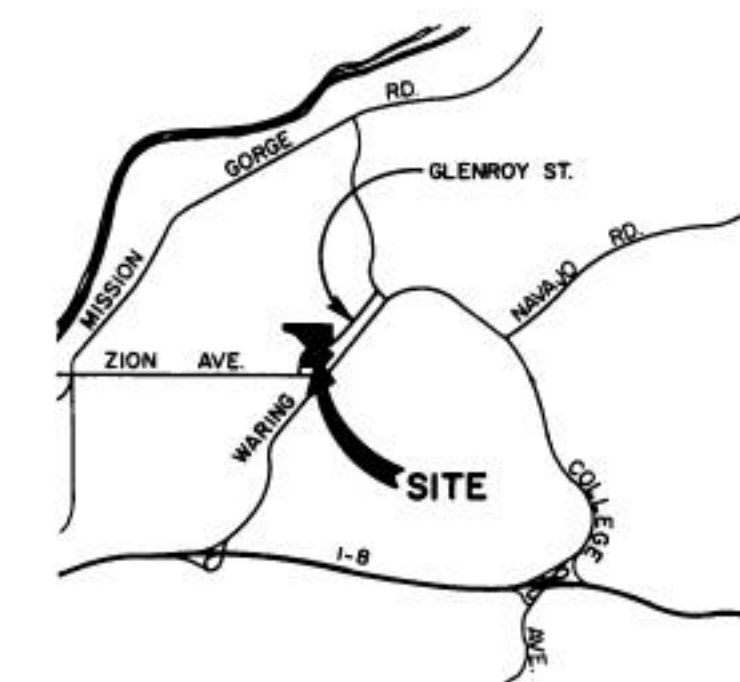
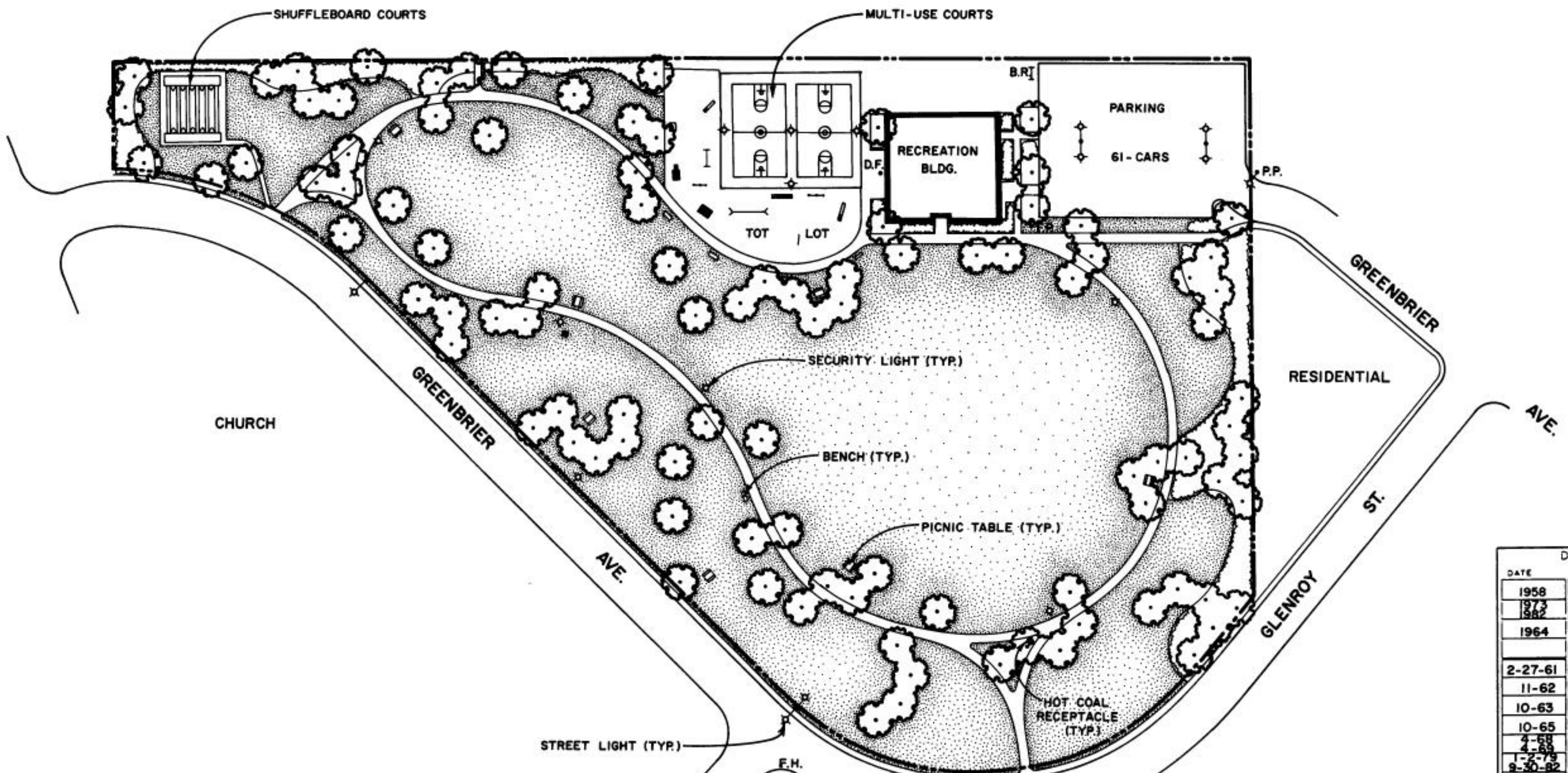
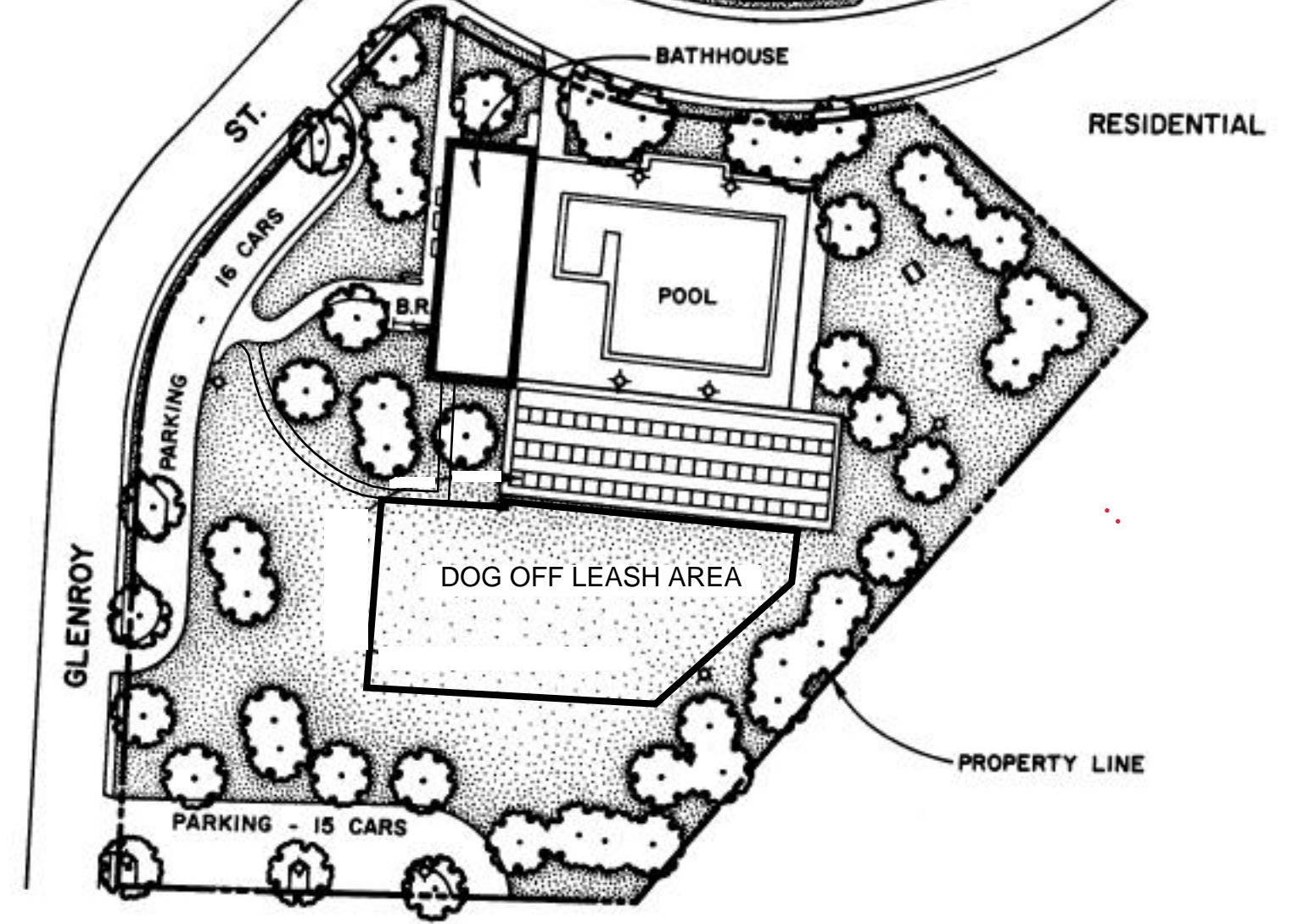
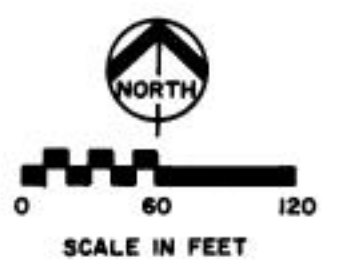


HARVEY LEWIS JUNIOR HIGH SCHOOL



LOCATION MAP



DATA LOG FOR:

DATE	ACTION	REFERENCE DOCUMENTS	COST	ACRES
1958	SITE ACQUIRED	RESO NO 151037		13.35
1973	SITE DEDICATED	ORD NO 11105		9.83
1964	GDP CONSULTANT HIRED	RESO NO		
				NAME STAFF (C.N.A.)
P.E.R. BOARD APPROVAL		P.F. & R. APPROVAL		
2-27-61	INITIAL DEVELOPMENT	CIP NO	JO NO 17003	DRWG NO 9994-D
11-62	PARKING LOT	CIP NO	JO NO 21870	DPWG NO 9841-D
10-63	MULTI-USE CT.	CIP NO	JO NO 17340	DRWG NO 11042-D
10-65	IRRIGATION	CIP NO	JO NO 17437	DRWG NO 11939-D
4-68	SHUFFLEBOARD CT.	CIP NO	JO NO 17705	DRWG NO 12859-D
4-68	LIGHTS, REC BLDG	CIP NO	JO NO 17844	DRWG NO 1414-D
1-2-79	LIGHTING	CIP NO	JO NO 17810	DRWG NO 20082-D
8-30-82	SWIMMING POOL	CIP NO 23-255	JO NO 17858	DRWG NO 20082-D
11-85	SO. PARKING LOT		118425	21283-D

IMPROVEMENTS SUMMARY (DATA FROM AS-BUILT DRAWINGS)

ITEM	QUANTITY	ITEM	QUANTITY	ITEM	QUANTITY	ITEM	QUANTITY
TOTAL SITE	13.35 AC	PLAY AREA	18,840 SF	PAVED WALKS	45,350 SF	SECURITY LTS	20 STDS
IMPROVED AREA	14.11 AC	MULTI PURPOSE CT	14,950 SF	PARK ROADS	SF	BALL FIELD LTS	STDS
TURF	13.91 AC	TENNIS CTS	SF	PARKING LOT	44,182 SF	TENNIS CT LTS	STDS
SHRUB BED	.73 AC	RESTROOM	SF	" STALLS STD	87	MULTI PURPOSE CT	4 STDS
NATURAL	AC	REC BLDG	9,186 SF	" STALLS HDCP	5		
OTHER LANDSCAPING	.03 AC	POOL BLDG	5,696 SF	COURT GAME AREA	SF	BACKSTOPS	EA
DIRT INFIELDS	AC	" DECK	10,584 SF	LAWN EDGING	8,580 LF	TENNIS CTS.	EA
		" WATER	7,325 SF	SHUFFLEBOARD	3,224 SF		
		SOLAR PANELS	7,325 SF				
						REVISION	T.R. 7/21/94

CITY OF SAN DIEGO PARK and RECREATION DEPARTMENT

THE GENERAL DEVELOPMENT PLAN

# ALLIED GARDENS

COMMUNITY PARK

COUNCIL DIST. NO. 7 COMM. PLAN AREA NAVAJO 5155 GREENBRIER AVE. P.S.D. NO. 380

LAMBERT COORDINATES 230-1745 THOMAS BROS PG. 1250, A-6

Recreational Value Scoring - Allied Gardens CP Dog off Leash Area

Park Size Category	Points	Existing Facility Score	Proposed Improvements/ expansion	Notes
<i>Scoring : Based on overall park acreage (population-serving only)</i>				
Park Acreage: Points are awarded to parks based on their overall acreage.	7 point per acre	91		
Parks under an acre will receive 0.875 points for each 1/8 acre.	0.875 points for each 1/8 acre	0	0	
<i>Does not apply to MHPA or MSCP lands</i>				
<b>AMENITIES/RECREATION OPPORTUNITIES</b>				
Health/Fitness/Sports Category	Points	Existing Facility Score	Proposed Improvements/ expansion	Notes
Play Area	7 pt. per 750 sf of play area <sup>1</sup>	133	0	
Nature Exploration Playground <sup>11</sup>	7 pt. per 1/2-acre	0	0	
Multi-Purpose Turf Area - point per each 1/2 acre	7 pt. per 1/2 acre	126	0	
Active Recreation Fields	56 points for an active recreation field module (1 soccer field and 2 softball fields) or 28 points for a single softball or soccer field <sup>6</sup>		0	
Basketball/Tennis/Pickleball/Sand Volley Ball	7 pt. per each full court (3.5 point for half-court) <sup>6</sup>	14	0	
Small Hardcourt Areas: with pavement-coating mark-outs	3.5 pt. per hardcourt area; 7 pts. maximum <sup>5</sup>	7	0	
Sports Lighting - pickleball, volleyball, basketball full-court - or equivalent to basketball full-court	3.5 pt. per court <sup>12</sup>	7	0	
Sports Lighting - single softball field, full-size	7 pt. for ea. full size field <sup>12</sup>		0	
Sports Lighting - each pair of softball fields or full-size soccer field	14 pts. <sup>12</sup>	0	0	
Splash Pad (water playground)	14; 14 pts. maximum	0	0	
Multi-use Pathways: (Route Type 6, per SD Pedestrian Master Plan)	7 pt. per 1/2 mile	7	0	
Decomposed Granite or Dirt Trails: 4 ft. min. width, (Route Type 7, SD Pedestrian Master Plan)	7 pt. per 1 mile	0	0	
Fitness Circuit	7 pt. for ea. 3 pieces of equip. w/ signage; 21 pts. maximum per 5 acres	0	0	
Specialty Recreation (hard-surface) pump tracks, skate plaza or similar	7 pt. per 5,000 sf each	0	0	
Specialty Recreation (soft-surface)	3.5 pt. each; 7 pts. Maximum	7	0	
Specialty Recreation: disc golf or similar (min. 1/2 acre) <sup>2</sup>	7 pt. each; 14 pts. maximum	0	0	

**Recreational Value Scoring - Allied Gardens CP Dog off Leash Area**

<b>Social Spaces Category</b>		<b>Existing Facility Score</b>	<b>Proposed Improvements/ expansion</b>	<b>Notes</b>
Off-Leash Dog Area - 1/8 acre minimum fenced area	10.5 pts. for ea. area less than 3 acres	0	10.5	
Off-Leash Dog Area - 3 acres minimum fenced area	21 pts. for ea. area 3 acres and larger; 42 pts. Maximum	0	0	
Food Area/Concessions or Clubhouse Building (if separate from Rec Center), 250 s.f. minimum size	7 pt, 7 pt. maximum	0	0	
Community Garden <sup>3</sup>	7 pt for ea. 10 plots; 14 pts. maximum	0	0	
Interactive/Technology Element	7 pt. maximum	0	0	
Performance/Event Space: 5,000 s.f. minimum size paved area with seating, lighting and utilities (power, data, sound) <sup>8</sup>	21; 21 pts. maximum	0	0	
<b>Site Amenities Category</b>		<b>Existing Facility Score</b>	<b>Proposed Improvements/ expansion</b>	<b>Notes</b>
All-weather shade cover/pavilion with tables/seating	7 pt. for ea. 400 sq. ft roof area (min. size)	0	0	
Restroom building	21 pt. per building	0	0	
Ranger Station Facilities: with public educational/interpretive display areas(s)	7 pt. per 1,000 sf	0	0	
Amphitheater: with hardscape seating and universal access <sup>8</sup>	7 pt. per 40-person capacity; 14 pts. maximum	0	0	
Wayfinding Signage System <sup>9</sup>	3.5 pt per system; 7 pts. maximum	0	0	
Public Art/Placemaking Elements (only 1 element per space)	3.5 pt. for each element; 7 pts. maximum	0	0	
Creation of wetlands area(s) or native planting restoration area(s) <sup>7</sup>	10.5 pt per acre	0	0	
<b>ACCESS/CONNECTIVITY</b>		<b>Existing Facility Score</b>	<b>Proposed Improvements/ expansion</b>	<b>Notes</b>
<i>Definition: Measures ability of park to increase overall connectivity in the Citywide parks network or improve access to an existing recreational asset</i>				
<i>Scoring: 0 (no component present) or 7-21 (component present)</i>				
	<b>Points</b>			
Linkages: connection to a CI 1 Bike or Cycle Track	21; 21 pts maximum	0	0	
Linkages: connection to a trail system in open space	14; 14 pts maximum	0	0	
Integrated with transit: within 500 ft. walking distance to a transit stop or closer	14; 14 pts maximum	14	0	
Integrated with transit: within 1/4-mile walking distance to a transit stop	7; 7 pt. maximum	0	0	
Connection to Active Public Realm (less than 50 feet to café, restaurants, gym/fitness, retail)	7; 7 pt. maximum	0	0	
Connection to Public/Civic Use (co-location with school, library, non-profit)	7; 7 pts maximum	7	0	
Connection to Natural Area/Scenic View Corridor (must have physical structure to connect or provide view access)	7; 7 pts maximum	0	0	

**Recreational Value Scoring - Allied Gardens CP Dog off Leash Area**

<b>ACTIVATION &amp; ENGAGEMENT</b>	<b>Existing Facility Score</b>	<b>Proposed Improvements/ expansion</b>	<b>Notes</b>
<i>Definition : Measures ability of space or facility to spark social interaction and learning-based recreation and bring diverse users together</i>			
<i>Scoring : 0 (no component present) or 7-21 (component present)</i>			
	<b>Points</b>		
Interpretive/Education/Cultural Elements, such as Tribal cultural elements: minimum of 10 square feet of sign art/copy display area	7; 7 pt. maximum	0	0
Space dedicated to programmed activities, weekly minimum occurrences: 7 pt. for 5,000-10,000 s.f.; 14 pts. for 10,000 or more s.f.	14; 14 pts maximum	0	
Recreational Features for the Disabled <sup>4</sup>	21; 21 pts maximum	0	0
Trails or Multi-use Pathways contiguous with wetland area(s), or significant water body, or native planting restoration area(s) <sup>7</sup>	7 pt per 1/2 mile	0	0
Urban Forestry: at 5-year growth 50% of all site hardscape (roads, sidewalks, parking lots) have greater than 60% tree canopy <sup>10</sup>	14; 14 pts maximum	0	0
<b>TOTAL VALUE POINTS PER PARK:</b>	<b>413</b>	<b>10.5</b>	

<b>Recreation Value Points Tabulation Summary:</b>	
Total Existing Facility Value Points	413
Total Proposed Facility Value Points	10.5
<b>Total Recreation Value Points</b>	<b>423.5</b>
<b>Population Served</b>	<b>4235 Residents</b>

\* See PMP Appendix D for Notes