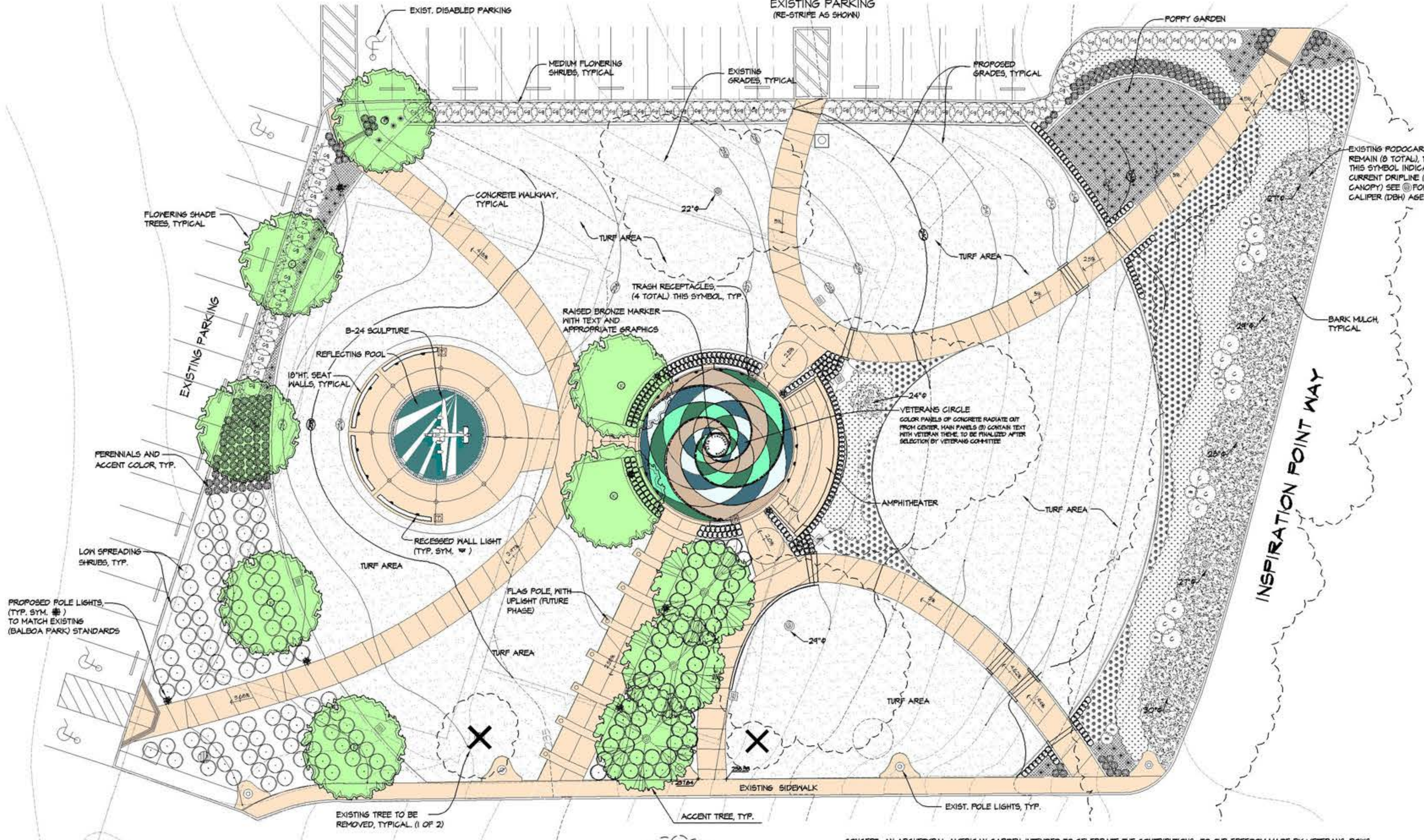


Architecture
Interior Design
Planning
Engineering
One America Plaza
600 West Broadway
Suite 200
San Diego
California 92101-3382
P 619.231.1900
F 619.231.1920
www.avp.com

ALL IDEAS, DESIGN ARRANGEMENTS AND PLANS INDICATED OR REPRESENTED BY THIS DRAWING ARE OWNED BY AND ARE THE PROPERTY OF AUSTIN VEUM ROBBINS PARTNERS, INC. AND SHALL BE CREATED, DEVELOPED, AND OWNED FOR THE USE AND IN CONNECTION WITH THE SPECIFIC PROJECT. NONE OF SUCH IDEAS, ARRANGEMENTS OR PLANS SHALL BE USED BY OR DISCLOSED TO ANY PERSON, FIRM, OR CORPORATION FOR ANY PURPOSE WHATSOEVER WITHOUT THE WRITTEN PERMISSION OF AUSTIN VEUM ROBBINS PARTNERS, INC.

275 BEEB, STREET
SAN DIEGO, CALIFORNIA - 92101
951-279-1000 FAX 951-279-1421
DAVID REED
LANDSCAPE ARCHITECTS

**VETERAN'S MEMORIAL GARDEN
BALBOA PARK-INSPIRATION POINT**
PARK BOULEVARD
SAN DIEGO, CA



CONCEPT: AN ARCHETYPAL AMERICAN GARDEN, INTENDED TO CELEBRATE THE CONTRIBUTIONS TO OUR FREEDOM MADE BY VETERANS. ROWS OF RED AND WHITE BORDER ROSES, ACCENTED BY COBALT BLUE AGAPANTHUS, GREET VISITORS. THE POPPY GARDEN BRINGS A SENSE OF ANNUAL RENEWAL. THE SHADE GARDEN SERVES AS A RESPITE FOR THE EXISTING PODOCARPUS, WHICH STAND AS SENTINELS OVER THE GARDEN.

PLANT PALETTE

- EXISTING TREES TO REMAIN (APPROX. CANOPY AS SHOWN)
 - PODOCARPUS GRACILIOR
 - FERN PINE
- FLOWERING SHADE TREES (ONE OF THE FOLLOWING:)
 - KOELREUTERIA BIPINNATA
 - CHINESE FLAME TREE
- ACCENT TREES (ONE OF THE FOLLOWING:)
 - GINKGO BILOBA FAIRMOUNT
 - FAIRMOUNT GINKGO
- MEDIUM FLOWERING SHRUBS (ONE OF THE FOLLOWING:)
 - GARISSA GRANDIFLORA
 - NATAL PLUM
- LOW SPREADING SHRUBS
 - ROSA FLORIBUNDA 'RED HEIDLAND'
 - HEIDLAND RED ROSE
 - ROSA POLYANTHA 'SOUVENIR DE ST. ANNES'
 - ST. ANNES' BORDER ROSE
- PERENNIAL & ACCENT COLOR
 - AGAPANTHUS 'ELAIN'
 - COBALT BLUE LILY OF THE NILE
 - CENTAUREA CYANEUS
 - CORNFLOWER
 - LOBELIA ERINUS 'LAGUNA BLUE'
 - LASUNA BLUE LOBELIA
- POPPY GARDEN
 - PAPAVER RHOEAS
 - FLANDERS POPPY
 - SESLERIA AUTUMNALIS
 - AUTUMN MOOR GRASS
- SHADE GARDEN
 - GAMELLIA SASANGUA 'SHOWA NO-SAKAE'
 - SHOWA NO-SAKAE SASANGUA GAMELLIA
 - SERANUM 'JOHNSON'S BLUE'
 - JOHNSON'S BLUE CRANESBILL
 - HYDRANSEA MACROPHYLLA
 - GARDEN HYDRANSEA
 - SHREDED BARK HEDGE
 - USE AS GROUNDCOVER AROUND EXISTING TREES
 - TRACHELOSPERMUM JAGMINOIDES
 - STAR JASMINE
 - LOW BORDER HEDGE
 - BUXUS M. JAPONICA
 - DWARF JAPANESE BOX

DECIDUOUS WITH GREAT STRUCTURE. SPRAYS OF SMALL YELLOW FLOWERS ARE SHORT, THEN TURN TO ORANGE SALMON BRACTS IN LATE SUMMER. EASY CARE.

STRONGLY PYRAMIDAL HABIT, BUT SLOPE.

SHRUB FORM: FULL AND DENSE.

BEAUTIFUL RED FLOWERS ON CAREFREE SPREADING SHRUB. PALE PINK BUDS OPEN TO BRILLIANT WHITE FLOWERS. EASY CARE. SPREADING.

ULTRA RICH BLUE FLOWERS ABOVE FULL SIZE LEAVES. ANNUAL BUT WORTH IT. REPLACE IN SPRING. USE WITH OTHER SPECIES. PERENNIAL FOR PART SHADE, WITH CORNFLOWER BLUE BLOSSOMS.

BRILLIANT RED FLOWERS IN SPRING. RE-SOON EASILY. YELLOW GREEN TUPITS (12-16" TALL & WIDE), TURNING STRAW COLORED IN WINTER.

LOW COMPACT GROWTH AND DOUBLE BRIGHT ROSE RED FLOWERS. BLUE FLOWERS ON FERNY FOLIAGE. SPREADS EASILY. USE WITH SOME SHADE. PLANT WITH ACID RESINEM TO ENCOURAGE BLUE FLOWERS.

SUN OR SHADE. FRAGRANT WHITE FLOWERS FOR UP TO 10 WEEKS.

CLASSICAL SMALL HEDGE.

DRAWN:
CHECKED:
SET ISSUED:
PROJECT NO.: 00002.01
SHEET TITLE: GENERAL DEVELOPMENT PLAN
SHEET NO.: L-1

3/22/04