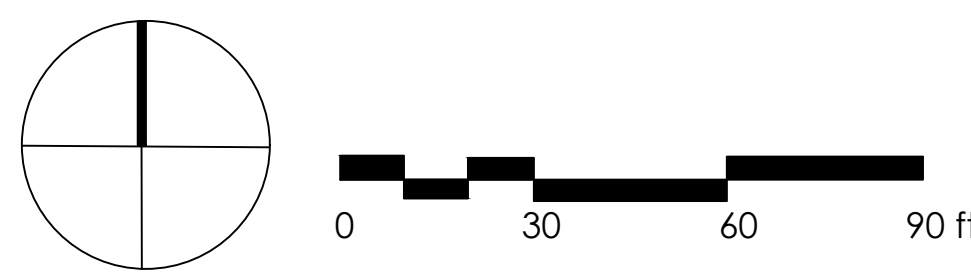
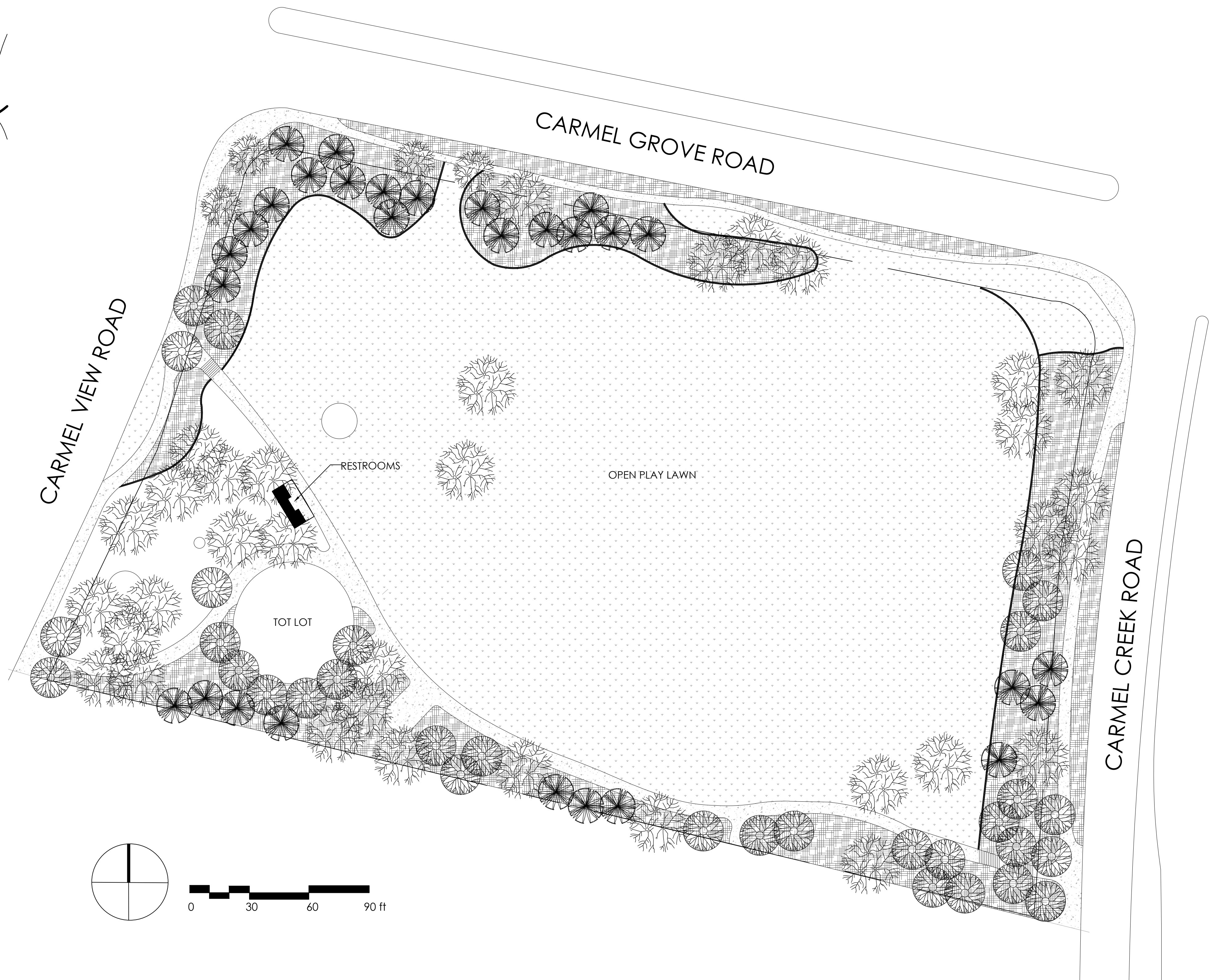


VICINITY MAP



DATE	ACTION	REFERENCE DOCUMENTS
--	SITE ACQUIRED	RESO. NO. --- COST \$: ACRES: ---
	SITE DEDICATED	ORD. NO. ACRES:
--	GDP CONSULTANT HIRED	RESO. NO. BY BALDWIN CO. NAME: ESTRADA LAND PLANNING
6-18-87	P&R BOARD APPROVAL	PF&R APPROVAL DATE:
10-24-88	INITIAL DEVELOPMENT	CIP NO. --- J.O. NO. 870475 DRWG. NO. 24130-D
		CIP NO. J.O. NO. DRWG. NO.
		CIP NO. J.O. NO. DRWG. NO.
		CIP NO. J.O. NO. DRWG. NO.
		CIP NO. J.O. NO. DRWG. NO.
		CIP NO. J.O. NO. DRWG. NO.
		CIP NO. J.O. NO. DRWG. NO.

IMPROVEMENTS SUMMARY (DATA FROM AS-BUILT DRAWINGS)					
ITEM	QUANTITY	ITEM	QUANTITY	ITEM	QUANTITY
TOTAL SITE	3.00 AC.	PLAY AREA	2,830 SF	PAVED WALKWAYS	11,770 SF
IMPROVED AREA	3.5 AC.	MULTI-PURPOSE CT.	--- SF	BRIDAL PATH	--- SF
TURF	2.6 AC.	TENNIS CTS	--- EA	PARKING LOT	--- SF
SHRUB BED	--- AC.	RESTROOM	132 EA	PARKING STALLS-STD.	---
NATURAL	AC.	REC. BLDG	--- EA	PARKING STALLS-DISABLED	---
GROUND COVER	.57 AC.	POOL BLDG	--- LF	COURT GAME AREA	SF
DIRT INFIELDS	AC.	" " DECK	--- LF	LAWN EDGING	2,160 LF
BBQ	2 EA.	" " WATER	--- LF	BLEACHERS	3 STA
BICYCLE RACK	1 EA.	PICK NICK TABLES	4 EA		

CITY OF SAN DIEGO PARK AND RECREATION DEPARTMENT

THE GENERAL DEVELOPMENT PLAN

CARMEL GROVE

ONE SPACE RENAISSANCE PARK

COUNCIL DIST NO. 1 COMM. PLAN AREA NORTH CITY WEST - 24

LAMBERT COORDINATES: 282-1697 THOMAS BROTHERS PAGE: PG.34-C-4

PSD 190