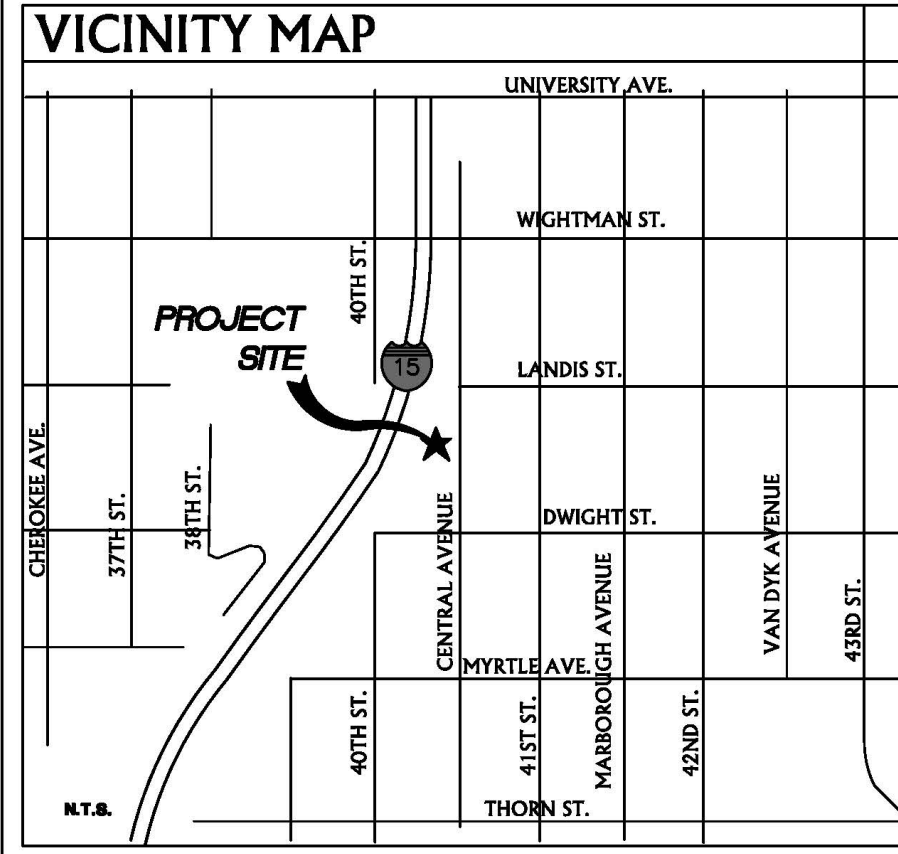
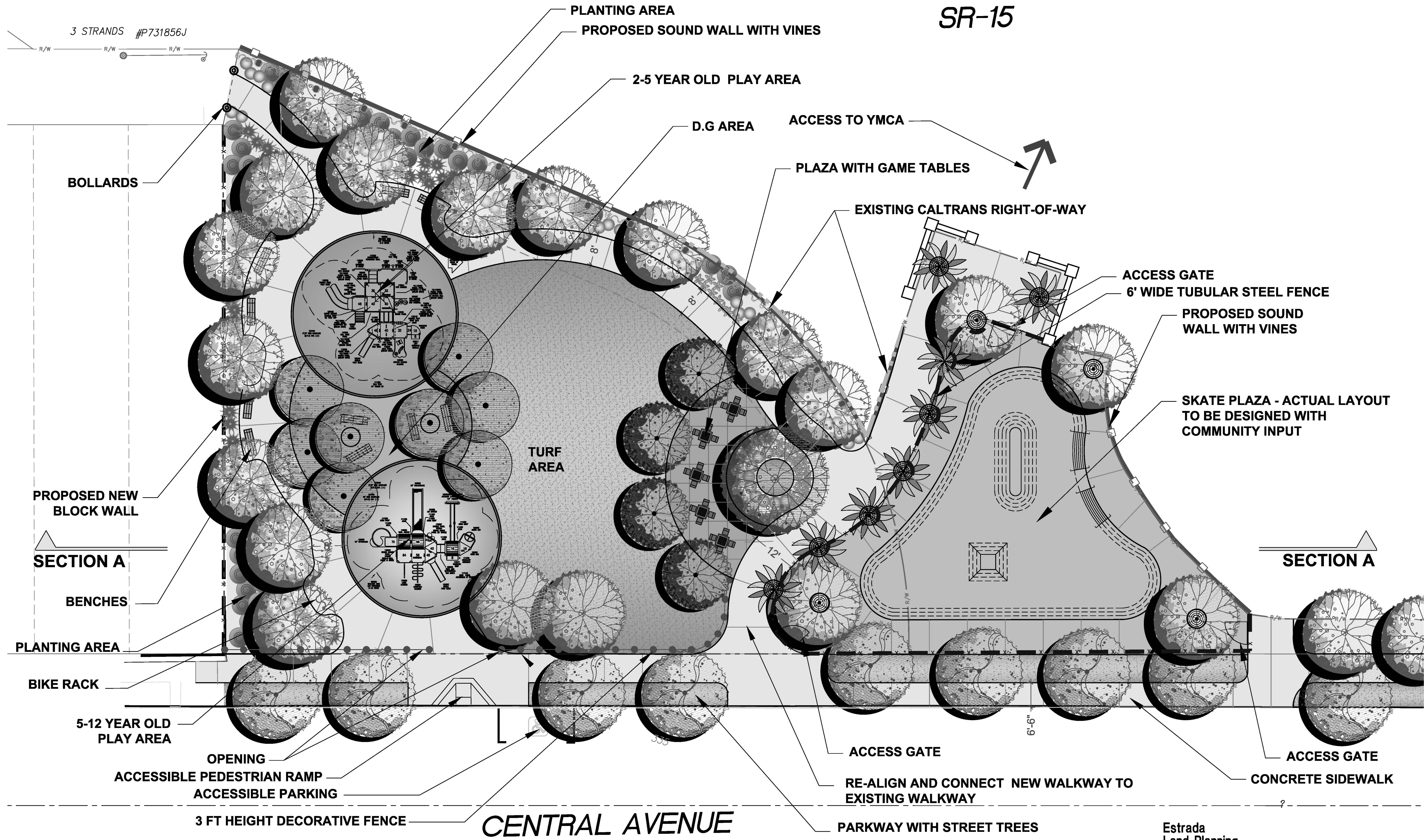


SR-15

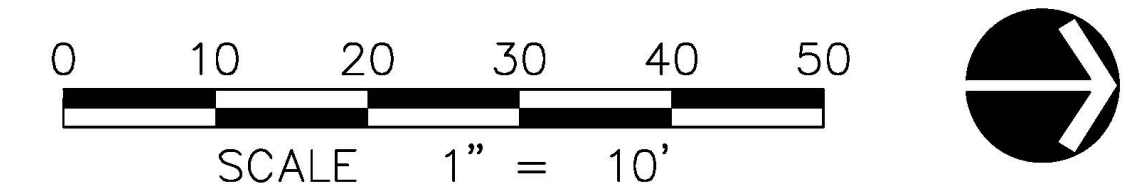


COUNCIL DISTRICT: 3 COMMUNITY PLAN AREA: CITY HEIGHTS

DATE	ACTION	REFERENCE DOCUMENTS	RESO. NO. R-	COST \$:	ACRES: 0.64
	SITE ACQUIRED		ORD. NO.		ACRES:
6/28/2011	GDP CONSULTANT HIRED		RESO. NO.	NAME: ESTRADA LAND PLANNING	
	P&R BOARD APPROVAL	PF&R APPROVAL	DATE:		
	INITIAL DEVELOPMENT	CIP NO.	J.O. NO.	DRWG. NO.	
		CIP NO.	J.O. NO.	DRWG. NO.	
		CIP NO.	J.O. NO.	DRWG. NO.	
		CIP NO.	J.O. NO.	DRWG. NO.	
		CIP NO.	J.O. NO.	DRWG. NO.	
		CIP NO.	J.O. NO.	DRWG. NO.	
		CIP NO.	J.O. NO.	DRWG. NO.	

IMPROVEMENTS SUMMARY (DATA FROM AS-BUILT DRAWINGS)

ITEM	QUANTITY	ITEM	QUANTITY	ITEM	QUANTITY
TOTAL SITE	0.64 AC.	TOT LOT	2,772 SF	PAVED WALKWAYS	15,277 SF
IMPROVED AREA	0.64 AC.	MULTI-PURPOSE CT.	SF	PARK ROADS	SF
TURF	0.14 AC.	TENNIS CTS.	SF	PARKING LOT	SF
SHRUB BED	0.10 AC.	RESTROOM	SF	PARKING STALLS-STD.	
NATURAL	AC.	REC. BLDG.	SF	PARKING STALLS-DISABLED	1
D.G. PAVING	0.025 AC.	POOL BLDG.	SF	COURT GAME AREA	SF
DIRT INFIELDS	AC.	POOL DECK	SF	LAWN EDGING	LF
		POOL WATER	SF	BLEACHERS	EA.
				TRASH RECEPTACLES	6 EA.
				REVISION	



Estrada Land Planning
 Urban Design Landscape Architecture Computer Imaging
 619.236.0143
 755 Broadway Circle, Suite 300
 San Diego, California 92101-6161
 619.236.0378 Fax
 ELP@EstradaLandPlan.com

CITY OF SAN DIEGO PARK AND RECREATION DEPARTMENT

THE GENERAL DEVELOPMENT PLAN

CENTRAL AVENUE MINI PARK

NEIGHBORHOOD PARK

PSD (PSD #)

LAMBERT COORDINATES: 210-1731 THOMAS BROTHERS PAGE: 1269 G-6

SHEET 1 OF 5