

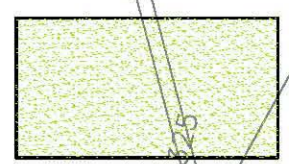
PLANT MATERIALS such as:

Podocarpus gracilior
Fern Pine (play area)
Ulmus parvifolia "Drake"
Chinese Evergreen Elm

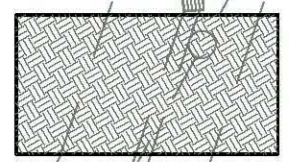
Platanus acerifolia "Columbia"
London Plane Tree

Calodendrum capense
Cape Chestnut

Cassia leptophylla
Gold Medallion Tree
(38th Street edge)



Turf

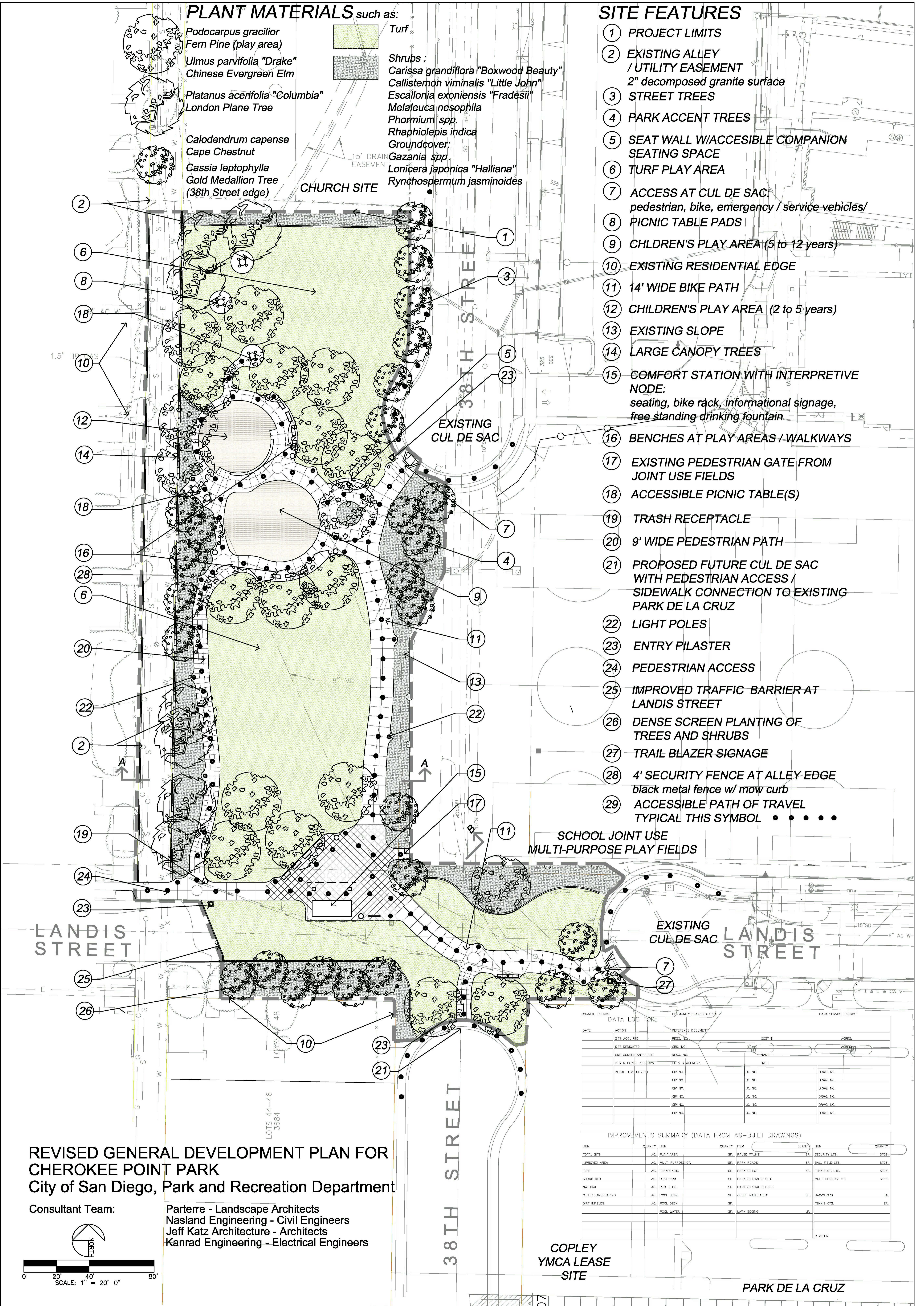


Shrubs:

Carissa grandiflora "Boxwood Beauty"
Callistemon viminalis "Little John"
Escallonia exoniensis "Fradesii"
Melaleuca nesophila
Phormium spp.
Raphiolepis indica
Groundcover:
Gazania spp.
Lonicera japonica "Halliana"
Rynchospermum jasminoides

SITE FEATURES

- 1 PROJECT LIMITS
- 2 EXISTING ALLEY / UTILITY EASEMENT
2" decomposed granite surface
- 3 STREET TREES
- 4 PARK ACCENT TREES
- 5 SEAT WALL W/ACCESSIBLE COMPANION SEATING SPACE
- 6 TURF PLAY AREA
- 7 ACCESS AT CUL DE SAC:
pedestrian, bike, emergency / service vehicles/
- 8 PICNIC TABLE PADS
- 9 CHILDREN'S PLAY AREA (5 to 12 years)
- 10 EXISTING RESIDENTIAL EDGE
- 11 14' WIDE BIKE PATH
- 12 CHILDREN'S PLAY AREA (2 to 5 years)
- 13 EXISTING SLOPE
- 14 LARGE CANOPY TREES
- 15 COMFORT STATION WITH INTERPRETIVE NODE:
seating, bike rack, informational signage,
free standing drinking fountain
- 16 BENCHES AT PLAY AREAS / WALKWAYS
- 17 EXISTING PEDESTRIAN GATE FROM JOINT USE FIELDS
- 18 ACCESSIBLE PICNIC TABLE(S)
- 19 TRASH RECEPTACLE
- 20 9' WIDE PEDESTRIAN PATH
- 21 PROPOSED FUTURE CUL DE SAC WITH PEDESTRIAN ACCESS / SIDEWALK CONNECTION TO EXISTING PARK DE LA CRUZ
- 22 LIGHT POLES
- 23 ENTRY PILASTER
- 24 PEDESTRIAN ACCESS
- 25 IMPROVED TRAFFIC BARRIER AT LANDIS STREET
- 26 DENSE SCREEN PLANTING OF TREES AND SHRUBS
- 27 TRAIL BLAZER SIGNAGE
- 28 4' SECURITY FENCE AT ALLEY EDGE
black metal fence w/ mow curb
- 29 ACCESSIBLE PATH OF TRAVEL
TYPICAL THIS SYMBOL ●●●●●



DATA LOG FOR:

DATE	ACTION	RESO. NO.	REF. DOCUMENT	COST \$	AGRES.
	SITE ACQUIRED	RESO. NO.			
	SITE DEDICATED	RESO. NO.			
	GDP CONSULTANT Hired	RESO. NO.			
	P & R BOARD APPROVAL	DP & R APPROVAL			
	INITIAL DEVELOPMENT	CIP NO.			
		CIP NO.			
		CIP NO.			
		CIP NO.			
		CIP NO.			
		CIP NO.			
		CIP NO.			
		CIP NO.			
		CIP NO.			

IMPROVEMENTS SUMMARY (DATA FROM AS-BUILT DRAWINGS)

ITEM	QUANTITY	ITEM	QUANTITY	ITEM	QUANTITY
TOTAL SITE	AC	PLAY AREA	SF	PAVED WALKS	SF
IMPROVED AREA	AC	MULTI PURPOSE CT.	SF	PARK ROADS	SF
TURF	AC	TENNIS CTS.	SF	PARKING LOT	SF
SHRUB BED	AC	RESTROOM	SF	PARKING STALLS STD.	SF
NATURAL	AC	REC. BLDG.	SF	PARKING STALLS HDQP.	SF
OTHER LANDSCAPING	AC	POOL BLDG.	SF	COURT SAME AREA	SF
DIRT INFIELDS	AC	POOL DECK	SF	LAWN EDGING	LF
		POOL WATER	SF		

REVISED GENERAL DEVELOPMENT PLAN FOR CHEROKEE POINT PARK
City of San Diego, Park and Recreation Department

Consultant Team:
Parterre - Landscape Architects
Nasland Engineering - Civil Engineers
Jeff Katz Architecture - Architects
Kanrad Engineering - Electrical Engineers

