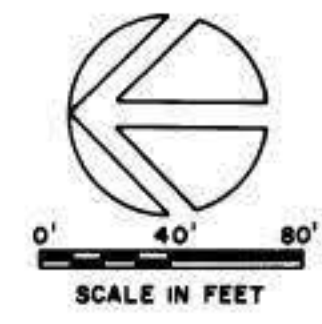
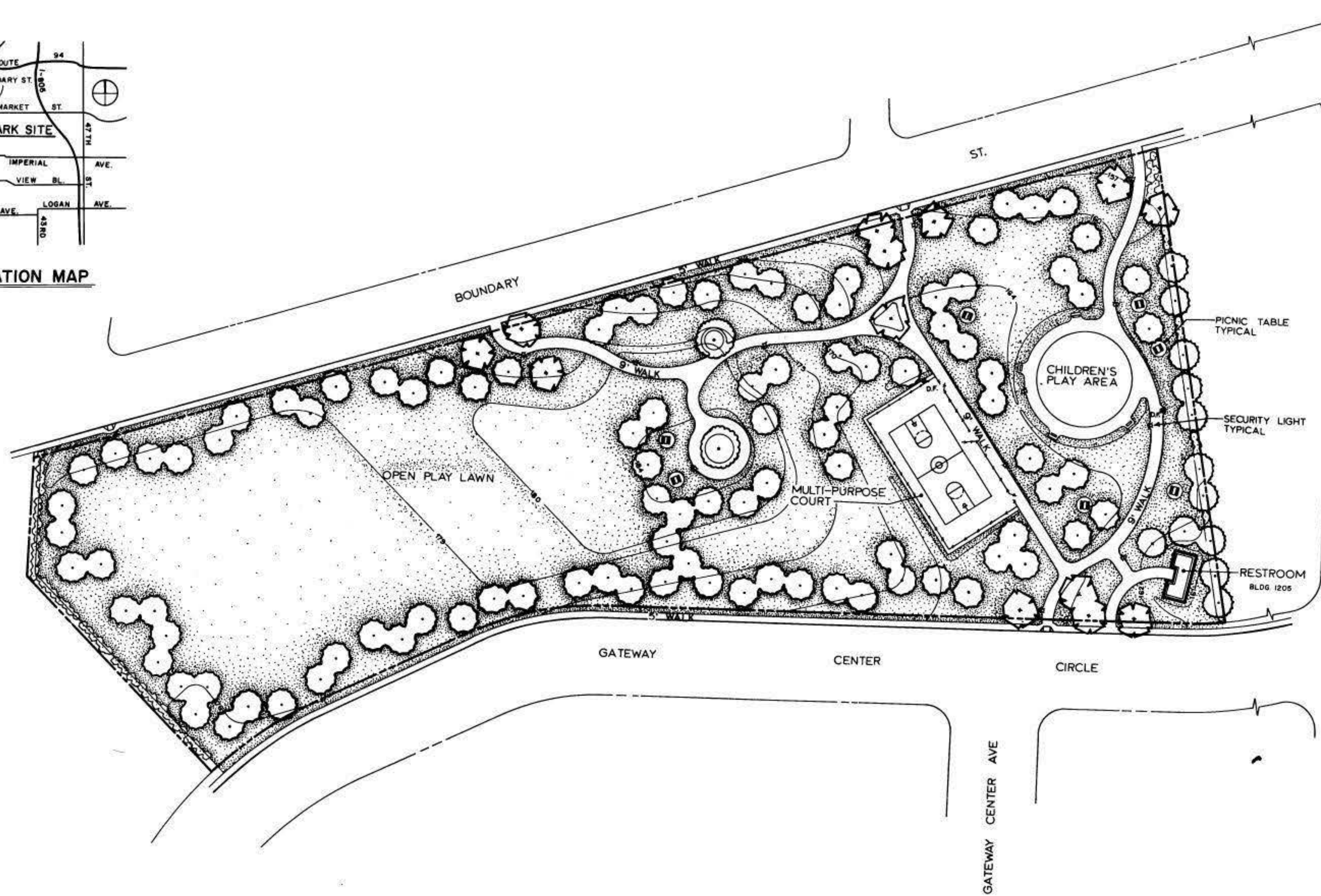




LOCATION MAP



DATA LOG FOR:			
DATE	ACTION	REFERENCE DOCUMENTS	
8-4-86	SITE ACQUIRED	RESO. NO.	COST <sup>1</sup>
1970/1989	SITE DEDICATED	ORD. NO. 16693	ACRES: 5.63
	GDP CONSULTANT HIRED	RESO. NO.	NAME ROGER DENEBBE INC & ASSOCIATES
	P&R BOARD APPROVAL	PF&R APPROVAL	
7-18-74	COMFORT STATION	CIP NO.	JO. NO. 117186 DRWG. NO. 16006-D
9-28-89	REDEVELOPMENT	CIP NO.	JO. NO. 840140 DRWG. NO. 22167-D
		CIP NO.	JO. NO. DRWG. NO.
		CIP NO.	JO. NO. DRWG. NO.
		CIP NO.	JO. NO. DRWG. NO.

IMPROVEMENTS SUMMARY (DATA FROM AS-BUILT DRAWINGS)							
ITEM	QUANTITY	ITEM	QUANTITY	ITEM	QUANTITY	ITEM	QUANTITY
TOTAL SITE	5.63 AC.	PLAY AREA	4536 SF	PAVED WALKS	15,592 SF	SECURITY LTS	17 STDS
IMPROVED AREA	5.93 AC.	MULTI PURPOSE CT	7200 SF	PARK ROADS	SF	BALL FIELD LTS	STDS
TURF	5.08 AC.	TENNIS CTS	SF	PARKING LOT	SF	TENNIS CT. LTS	STDS
SHRUB BED	0.10 AC.	RESTROOM	551 SF	" " STALLS STD.		MULTI PURPOSE CT.	2 STDS
NATURAL	AC.	REC. BLDG.	SF	" " STALLS HOCP			
OTHER LANDSCAPING	AC.	POOL BLDG.	SF	COURT GAME AREA	SF	BACKSTOPS	EA
DIRT INFIELDS	AC	" " DECK	SF	" " WATER	SF	TENNIS CTS.	EA
		" " WATER	SF	LAWN EDGING	3440 LF		

CITY OF SAN DIEGO PARK and RECREATION DEPARTMENT

THE GENERAL DEVELOPMENT PLAN

# ALLEN DENNIS V. PARK

COUNCIL DIST. 4 COMM. PLAN AREA S.E. SAN DIEGO - 41 800 BOUNDARY ST. P.S.D. LAMBERT COORDINATES 200-1735 THOMAS BROS. PG. 66-A1 662