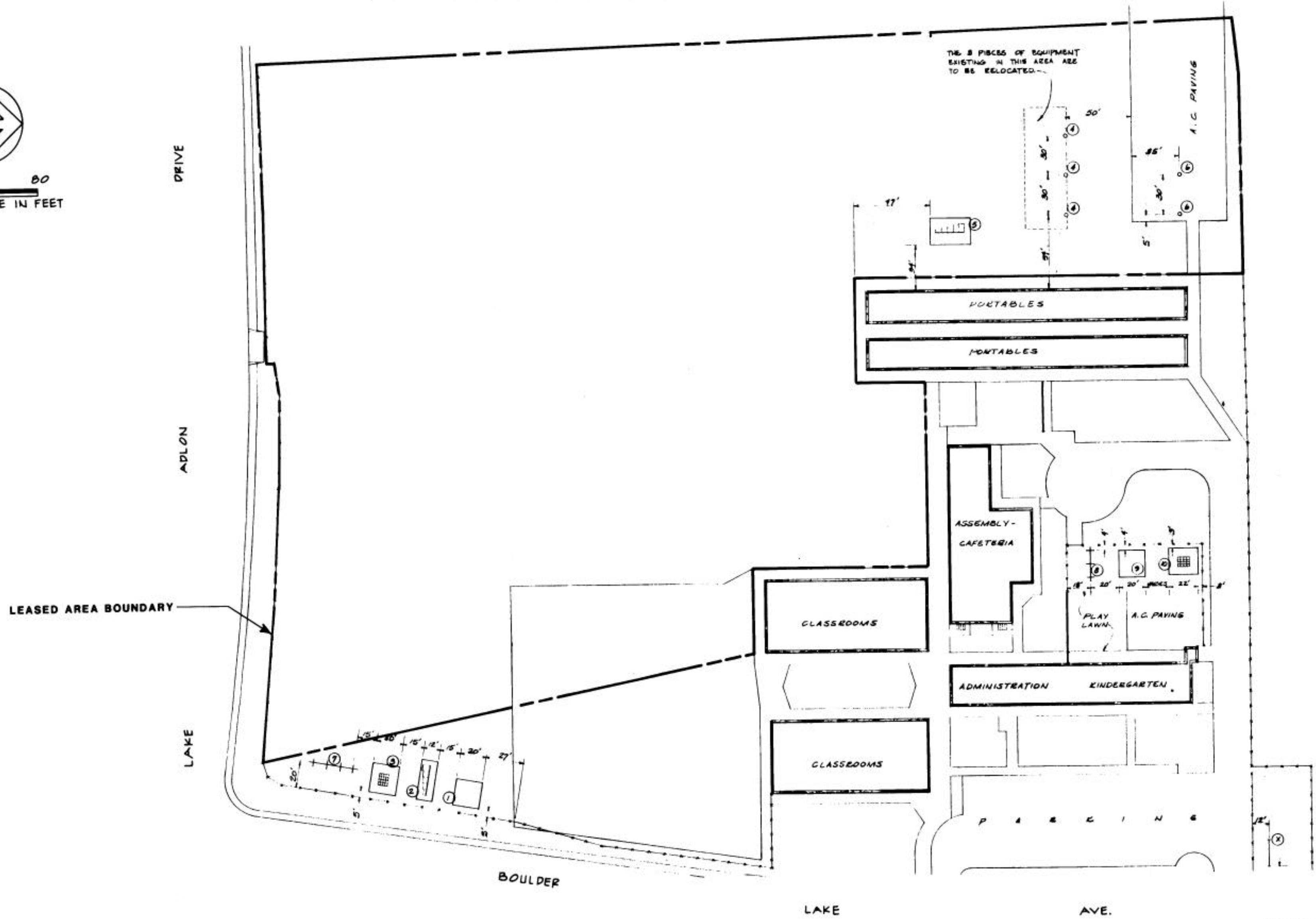
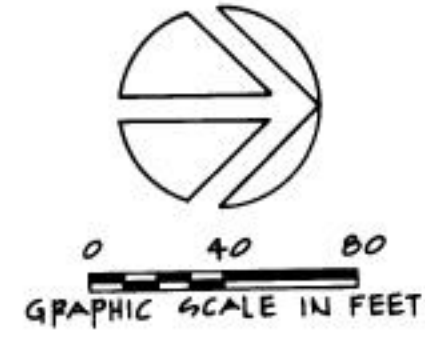


SAN CARLOS PARK AND RECREATION CENTER



PREPARED BY S.D. UNIFIED SCHOOL DISTRICT  
AREA MAINTAINED BY PARK & RECREATION DEPT.

COUNCIL DISTR 7 COMM PLAN AREA NAVAJO PSD 360

DATA LOG FOR:

DATE	ACTION	REFERENCE DOCUMENTS
	SITE ACQUIRED	RESO. NO. COST \$ ACRES.
	SITE DEDICATED	ORD. NO. ACRES.
	GDP CONSULTANT HIRED	RESO. NO. NAME
	P & R BOARD APPROVAL	PF & R APPROVAL
	INITIAL DEVELOPMENT	CIP NO. JO NO. DRWG. NO. 22972-D
		CIP NO. JO NO. DRWG. NO.
		CIP NO. JO NO. DRWG. NO.
		CIP NO. JO NO. DRWG. NO.
		CIP NO. JO NO. DRWG. NO.
7-26-77	LEASED, 25 YRS.	ORD. NO. 12114

IMPROVEMENTS SUMMARY (DATA FROM AS-BUILT DRAWINGS)

ITEM	QUANTITY	ITEM	QUANTITY	ITEM	QUANTITY	ITEM	QUANTITY
TOTAL SITE	AC	PLAY AREA	SF	PAVED WALKS	SF	SECURITY LTS	STDS
IMPROVED AREA	AC	MULTI PURPOSE CT	SF	PARK ROADS	SF	BALL FIELD LTS	STDS
TURF	AC	TENNIS CTS	SF	PARKING LOT	SF	TENNIS CT LTS	STDS
SHRUB BED	AC	RESTROOM	SF	" " STALLS STD		MULTI PURPOSE CT.	STDS.
NATURAL	AC	REC. BLDG	SF	" " STALLS HDCP			
OTHER LANDSCAPING	AC	POOL BLDG	SF	COURT GAME AREA	SF	BACKSTOPS	EA
DIRT INFIELDS	AC	" " DECK	SF			TENNIS CTS	EA
		" " WATER	SF	LAWN EDGING	LF		
LEASED 4.50 AC NOT USED.							
						REVISION	

CITY OF SAN DIEGO PARK and RECREATION DEPARTMENT

THE GENERAL DEVELOPMENT PLAN  
FORWARD ELEM. SCHOOL

NEXT TO SAN CARLOS P.R.C.

LAMBERT COORDINATES 231-1763 THOMAS BROS Pg. 55, D4

PSD  
360