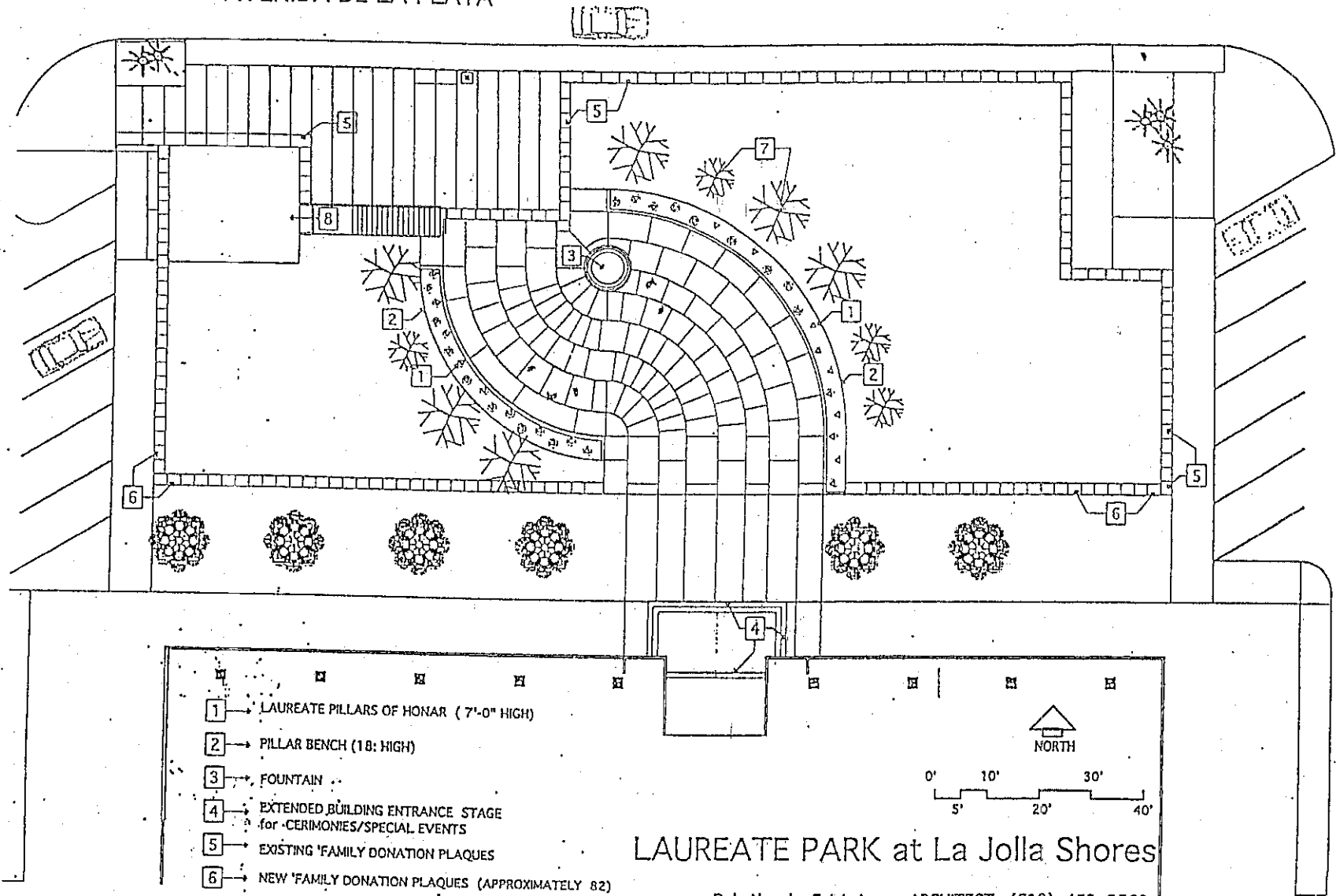
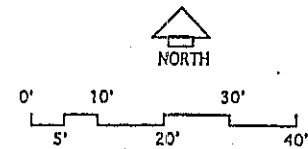


LAUREATE PARK AND PUMP STATION No. 27
(PROPOSED LANDSCAPING)

AVENIDA DE LA PLAYA



- 1 → LAUREATE PILLARS OF HONOR (7'-0" HIGH)
- 2 → PILLAR BENCH (18" HIGH)
- 3 → FOUNTAIN
- 4 → EXTENDED BUILDING ENTRANCE STAGE
for CERIMONIES/SPECIAL EVENTS
- 5 → EXISTING 'FAMILY DONATION PLAQUES
- 6 → NEW 'FAMILY DONATION PLAQUES (APPROXIMATELY 82)
- 7 → NEW TREES
- 8 → AREA FOR PROPOSED NEW PUMP/GENERATOR BY CITY



LAUREATE PARK at La Jolla Shores

Dale Naegle F.A.I. A. - ARCHITECT (619) 459 2560