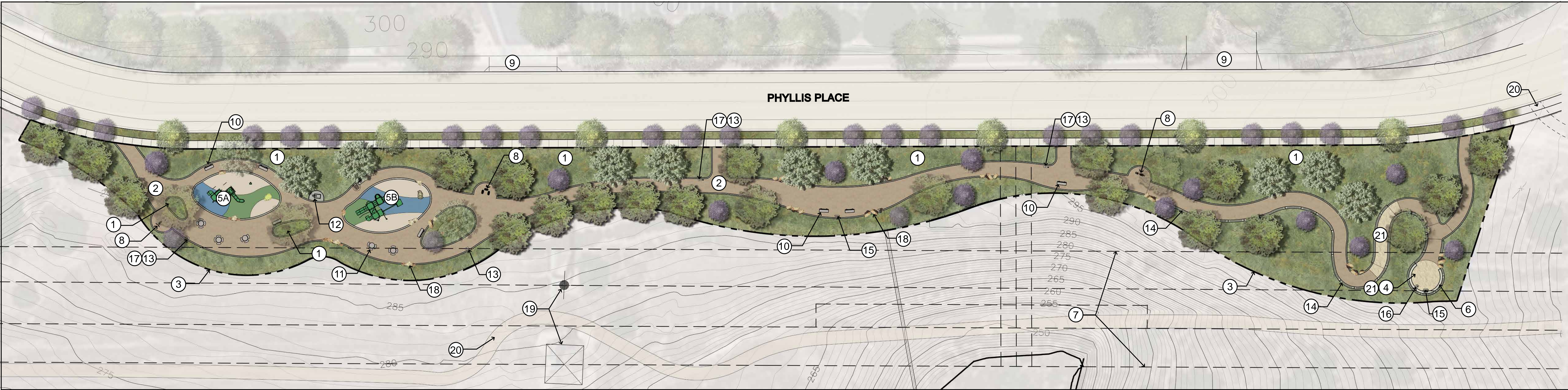
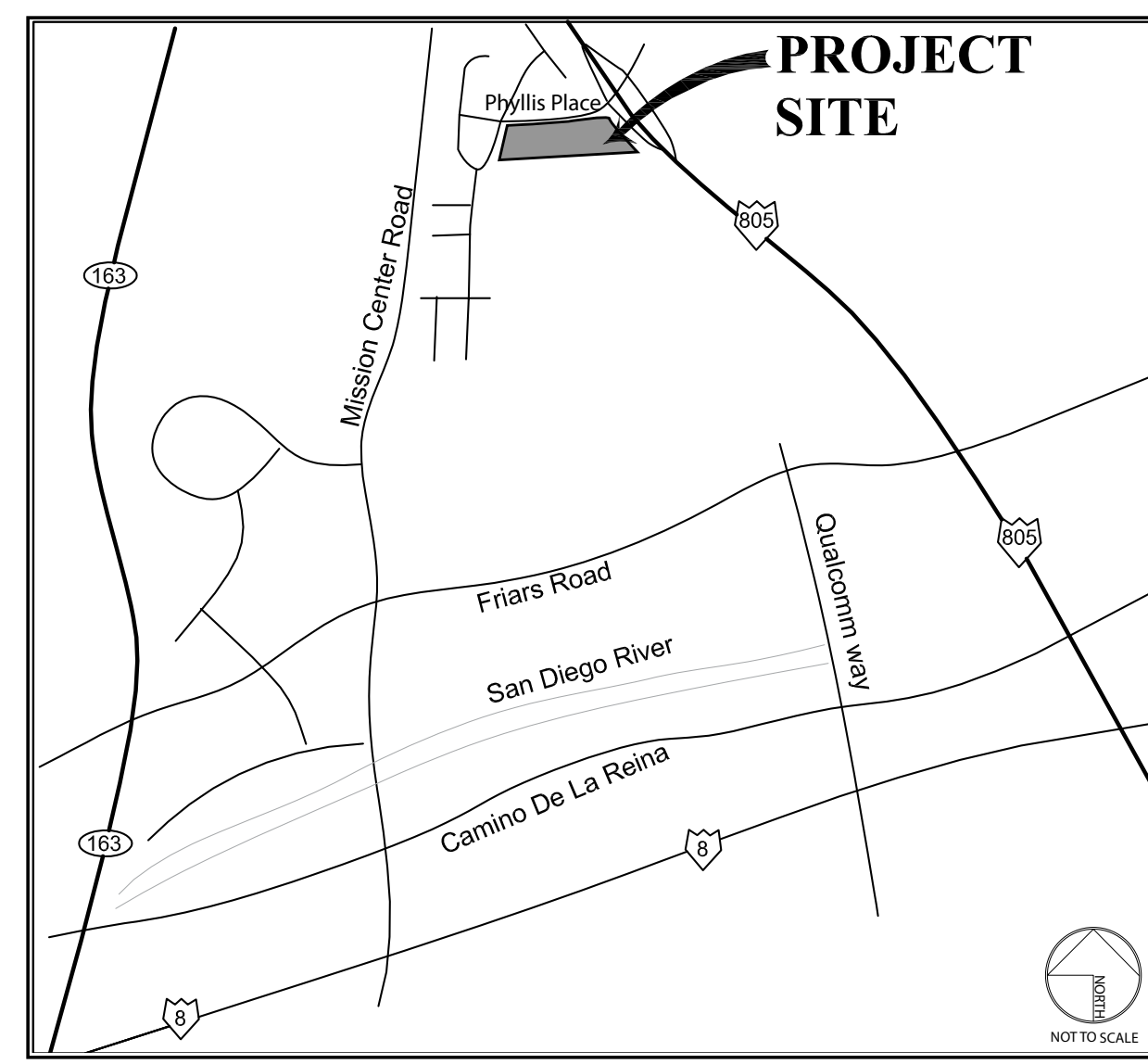


PARK DESIGN CONCEPT

Phyllis Place Park is a 1.33 acre park site proposed for a disturbed and underdeveloped area of land that is aligned along the road, Phyllis Place. The linear park is for passive use activities; including walking and enjoying spectacular views of Mission Valley along meandering walkways. A series of overlooks are provided with benches, tables and interpretive panels. Special features include a 'Historical Overlook' seating area, children's play areas that will include natural play components, and islands of planters along the primary walkway. The planting palette will include low water use California natives.

An alternative park plan is included pending notification that a roadway connection may be developed.

SITE MAP



LEGEND

- ① INTERPRETIVE GARDENS FEATURING CALIFORNIA NATIVES
- ② DECOMPOSED GRANITE PATH
- ③ PROPERTY LINE
- ④ OVERLOOK NODE
- 5A 2-5 YEAR OLD CHILDREN'S PLAY AREA
- 5B 5-12 YEAR OLD CHILDREN'S PLAY AREA
- ⑥ SEAT WALL
- ⑦ UTILITY EASEMENT
- ⑧ FITNESS NODE
- ⑨ EXISTING DRIVEWAY
- ⑩ BENCH, TYPICAL
- ⑪ PICNIC TABLES, TYPICAL
- ⑫ DRINKING FOUNTAIN
- ⑬ TRASH & RECYCLE RECEPTACLE
- ⑭ GUARDRAIL
- ⑮ INTERPRETIVE SIGNAGE
- ⑯ VIEWFINDER TELESCOPE
- ⑰ DOG STATION
- ⑱ BOULDERS
- ⑲ TRANSMISSION TOWERS
- ⑳ SDG&E EASEMENT ROAD
- ㉑ ENHANCED CONCRETE

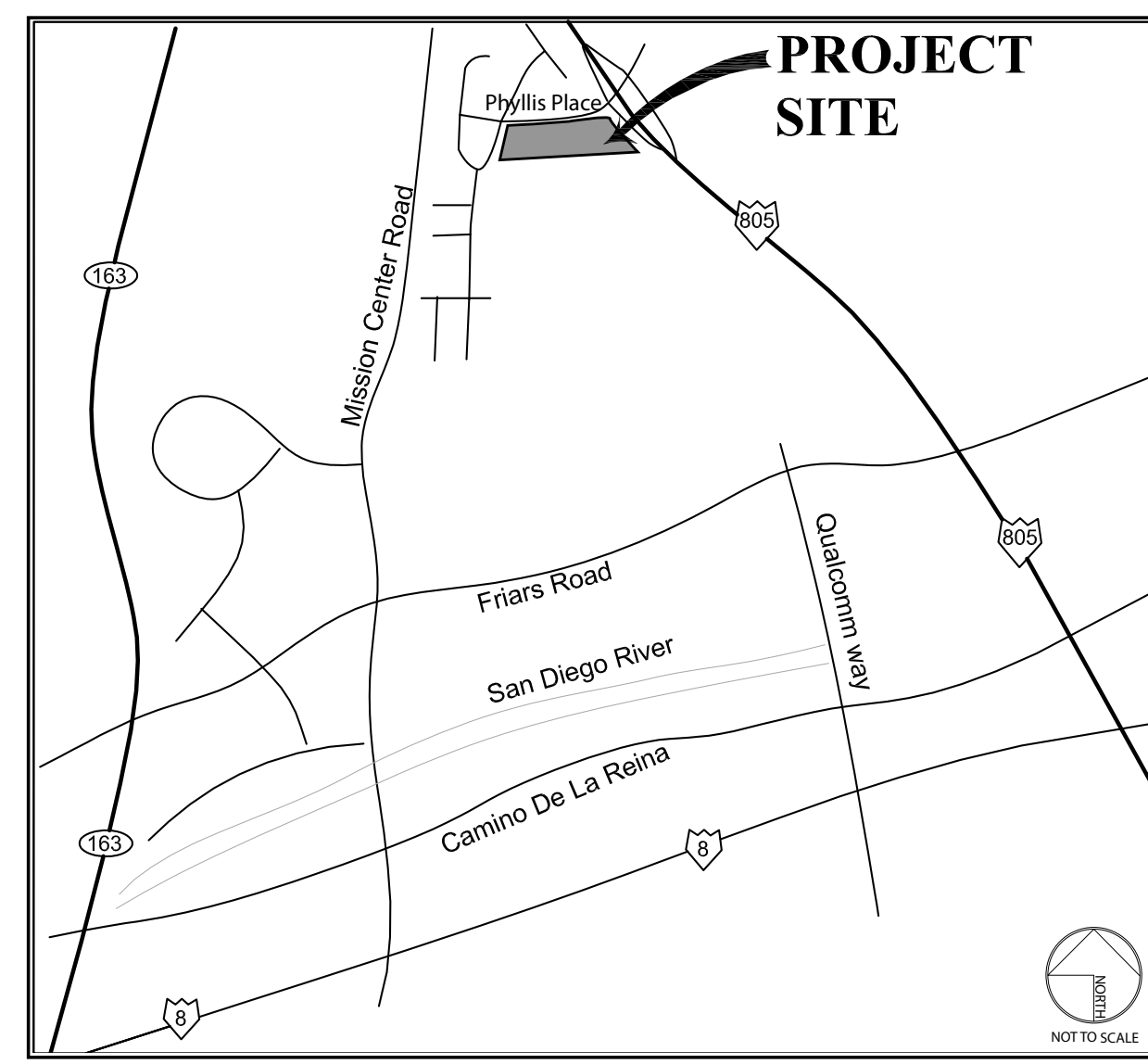
NATIVE PLANTING PALETTE

SHRUBS			PERENNIALS		TREES
<i>Agave shawii</i> Shaw's Agave	<i>Ceanothus griseus v. horizontalis</i> Carmel Creeper	<i>Rhus ovata</i> Sugar Bush	<i>Encelia californica</i> Coast Sunflower	<i>Penstemon centranthifolius</i> Scarlet Bugler	<i>Cercis occidentalis</i> Western Redbud
<i>Arctostaphylos densiflora</i> Howard McMinn Manzanita	<i>Eriogonum fasciculatum</i> 'Dana Point' Dana Point Buckwheat	<i>Ribes viburnifolium</i> Catalina Perfume Currant	<i>Epilobium canum</i> California Fuchsia	<i>Penstemon spectabilis</i> Showy Penstemon	<i>Cupaniopsis anacardioides</i> Carrotwood
<i>Arctostaphylos edmundsii</i> 'Danville' Danville Manzanita	<i>Fremontodendron</i> 'El Dorado Gold' El Dorado Gold Flannel Bush		<i>Eriodictyon crassifolium</i> Thick-leaved Yerba Santa	<i>Salvia mellifera</i> Black Sage	<i>Pinus torreyana</i> Torrey Pine
<i>Arctostaphylos</i> 'Emerald Carpet' Emerald Carpet Manzanita	<i>Galvezia speciosa</i> 'Firecracker' Firecracker Island Snapdragon		<i>Lilium pardalinum</i> Leopard Lily	<i>Salvia spathacea</i> Pitcher Sage	<i>Quercus agrifolia</i> Coast Live Oak
<i>Artemisia californica</i> 'Montara' Prostrate California Sagebrush	<i>Heteromeles arbutifolia</i> Toyon		<i>Lobelia cardinalis</i> Cardinal Flower	<i>Sisyrinchium bellum</i> Blue-eyed Grass	Existing Trees
<i>Baccharis pilularis</i> 'Pigeon Point' San Diego Mugwort	<i>Muhlenbergia rigens</i> Deergrass		<i>Lupinus arboreus</i> Bush Lupine	<i>Sisyrinchium californicum</i> Yellow-eyed Grass	
<i>Calliandra californica</i> Red Fairyduster	<i>Rhamnus californica</i> 'Eve Case' Eve Case Coffeeberry		<i>Mimulus cardinalis</i> Scarlet Monkey Flower	<i>Zauschneria californica</i> 'Ghostly Red' Red CA Fuchsia	
<i>Ceanothus concha</i> Concha Wild Lilac	<i>Rhus integrifolia</i> Lemonadeberry			<i>Zauschneria cana</i> Red California Fuchsia	

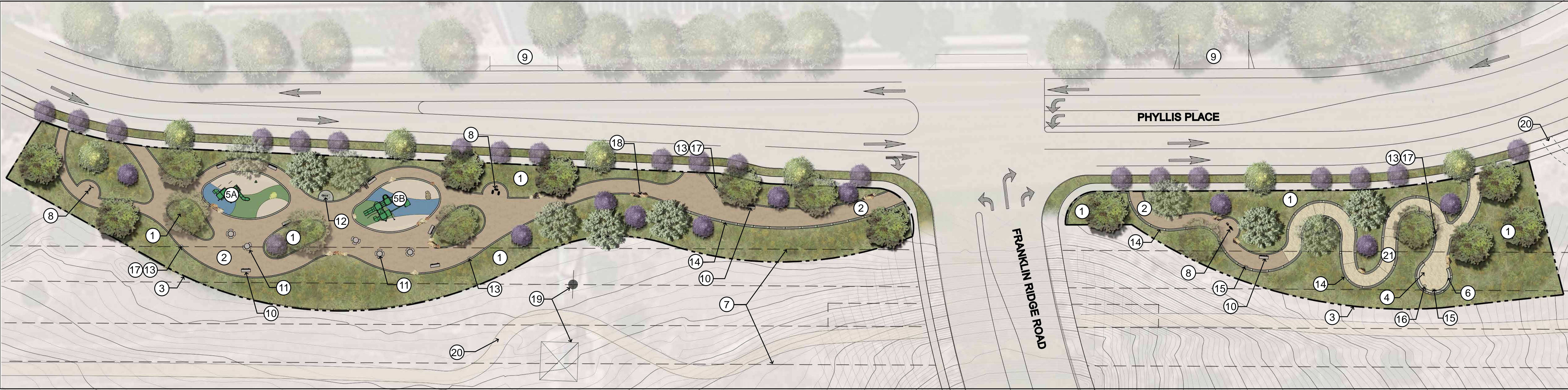
PARK DESIGN CONCEPT

Phyllis Place Park is a 1.33 acre park site proposed for a disturbed and underdeveloped area of land that is aligned along the road, Phyllis Place. The linear park is for passive use activities; including walking and enjoying spectacular views of Mission Valley along meandering walkways. A series of overlooks are provided with benches, tables and interpretive panels. Special features include a 'Historical Overlook' seating area, children's play areas that will include natural play components, and islands of planters along the primary walkway. The planting palette will include low water use California natives.

SITE MAP



Alternative Showing Road Connection



LEGEND

- ① INTERPRETIVE GARDENS FEATURING CALIFORNIA NATIVES
- ② DECOMPOSED GRANITE PATH
- ③ PROPERTY LINE
- ④ OVERLOOK NODE
- 5A 2-5 YEAR OLD CHILDREN'S PLAY AREA
- 5B 5-12 YEAR OLD CHILDREN'S PLAY AREA
- ⑥ SEAT WALL
- ⑦ UTILITY EASEMENT
- ⑧ FITNESS NODE
- ⑨ EXISTING DRIVEWAY
- ⑩ BENCH, TYPICAL
- ⑪ PICNIC TABLES, TYPICAL
- ⑫ DRINKING FOUNTAIN
- ⑬ TRASH & RECYCLE RECEPTACLE
- ⑭ GUARDRAIL
- ⑮ INTERPRETIVE SIGNAGE
- ⑯ VIEWFINDER TELESCOPE
- ⑰ DOG STATION
- ⑱ BOULDERS
- ⑲ TRANSMISSION TOWERS
- ⑳ SDGE EASEMENT ROAD
- ㉑ ENHANCED CONCRETE

NATIVE PLANTING PALETTE

SHRUBS			PERENNIALS		TREES
<i>Agave shawii</i> Shaw's Agave	<i>Ceanothus griseus v. horizontalis</i> Carmel Creeper	<i>Rhus ovata</i> Sugar Bush	<i>Encelia californica</i> Coast Sunflower	<i>Penstemon centranthifolius</i> Scarlet Bugler	<i>Cercis occidentalis</i> Western Redbud
<i>Arctostaphylos densiflora</i> Howard McMinn Manzanita	<i>Eriogonum fasciculatum</i> 'Dana Point' Dana Point Buckwheat	<i>Ribes viburnifolium</i> Catalina Perfume Currant	<i>Epilobium canum</i> California Fuchsia	<i>Penstemon spectabilis</i> Showy Penstemon	<i>Cupaniopsis anacardioides</i> Carrotwood
<i>Arctostaphylos edmundsii</i> 'Danville' Danville Manzanita	<i>Fremontodendron</i> 'El Dorado Gold' El Dorado Gold Flannel Bush		<i>Eriodictyon crassifolium</i> Thick-leaved Yerba Santa	<i>Salvia mellifera</i> Black Sage	<i>Pinus torreyana</i> Torrey Pine
<i>Arctostaphylos</i> 'Emerald Carpet' Emerald Carpet Manzanita	<i>Galvezia speciosa</i> 'Firecracker' Firecracker Island Snapdragon		<i>Lilium pardalinum</i> Leopard Lily	<i>Salvia spathacea</i> Pitcher Sage	<i>Quercus agrifolia</i> Coast Live Oak
<i>Artemisia californica</i> 'Montara' Prostrate California Sagebrush	<i>Heteromeles arbutifolia</i> Toyon		<i>Lobelia cardinalis</i> Cardinal Flower	<i>Sisyrinchium bellum</i> Blue-eyed Grass	Existing Trees
<i>Baccharis pilularis</i> 'Pigeon Point' San Diego Mugwort	<i>Muhlenbergia rigens</i> Deergrass		<i>Lupinus arboreus</i> Bush Lupine	<i>Sisyrinchium californicum</i> Yellow-eyed Grass	
<i>Calliandra californica</i> Red Fairyduster	<i>Rhamnus californica</i> 'Eve Case' Eve Case Coffeeberry		<i>Mimulus cardinalis</i> Scarlet Monkey Flower	<i>Zauschneria californica</i> 'Ghostly Red' Red CA Fuchsia	
<i>Ceanothus concha</i> Concha Wild Lilac	<i>Rhus integrifolia</i> Lemonadeberry			<i>Zauschneria cana</i> Red California Fuchsia	