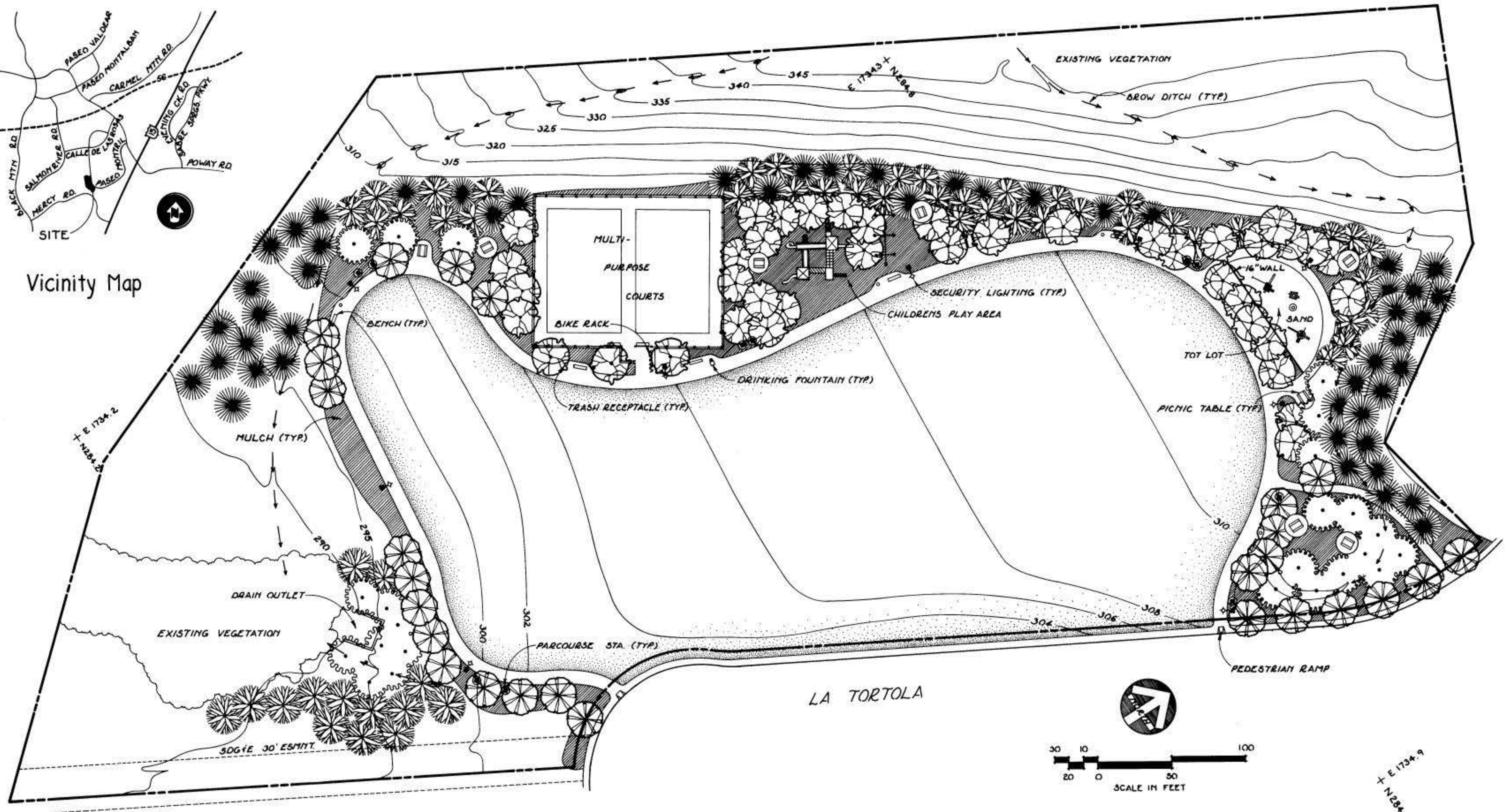


Vicinity Map



DATA LOG FOR:				
DATE	ACTION	REFERENCE DOCUMENTS		
4-6-87	SITE ACQUIRED	RESO. NO. 267870 COST: 586,970 ACRES: 8.53		
1-30-89	SITE DEDICATED	ORD. NO. 17237 ACRES: 8.53		
6-27-88	GDP CONSULTANT HIRED	RESO. NO. 271279 NAME PEKAREK GROUP		
6-18-87	P&R BOARD APPROVAL	PF & R. APPROVAL		
9-12-89	INITIAL DEVELOPMENT	CIP NO. 29-413 JO NO. 119086 DRWG. NO. 24139-0		
		CIP NO. JO NO. DRWG. NO.		
		CIP NO. JO NO. DRWG. NO.		
		CIP NO. JO NO. DRWG. NO.		
		CIP NO. JO NO. DRWG. NO.		

IMPROVEMENTS SUMMARY (DATA FROM AS-BUILT DRAWINGS)					
ITEM	QUANTITY	ITEM	QUANTITY	ITEM	QUANTITY
TOTAL SITE	8.53 AC.	PLAY AREA	2,322 SF	PAVED WALKS	12,412 SF
IMPROVED AREA	8.68 AC.	MULTI PURPOSE CT	13,390 SF	PARK ROADS	SF
TURF	3.00 AC.	TENNIS CTS	SF	PARKING LOT	SF
MULCH	1.24 AC.	RESTROOM	SF	" " STALLS STD	
NATURAL	3.80 AC.	REC BLDG	SF	" " STALLS HDCP	
OTHER LANDSCAPING	AC	POOL BLDG	SF	COURT GAME AREA	SF
DIRT INFIELDS	AC	" " DECK	SF		
PICNIC TABLES	9 EA.	" " WATER	SF	LAWN EDGING	1644 LF
PARCOURSE STA.	10EA.	BIKE RACKS	1 EA.	TRASH RECEPT.	8 EA.
				DRINKING FTH.	2EA.
				REVISION	
				T. ROBERTSON	12-18-89

CITY OF SAN DIEGO PARK and RECREATION DEPARTMENT

THE GENERAL DEVELOPMENT PLAN

RIDGEWOOD PARK

COUNCIL DIST. NO. 1 COMM. PLAN AREA PENASQUITOS EAST 33

LAMBERT COORDINATES 284.2 - 1734.5 THOMAS BROS PG 36 B-5

PS.D. NO. 131