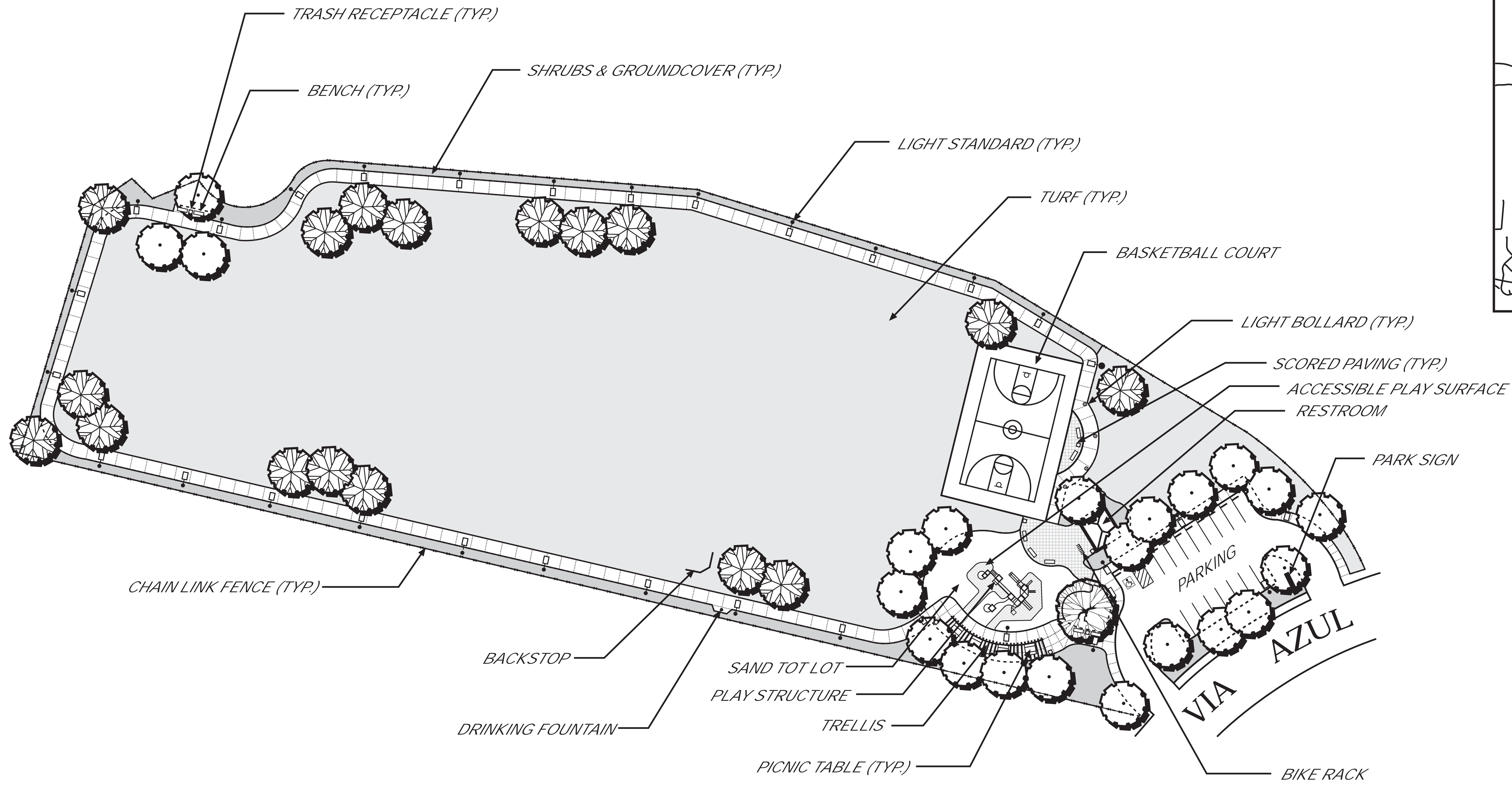
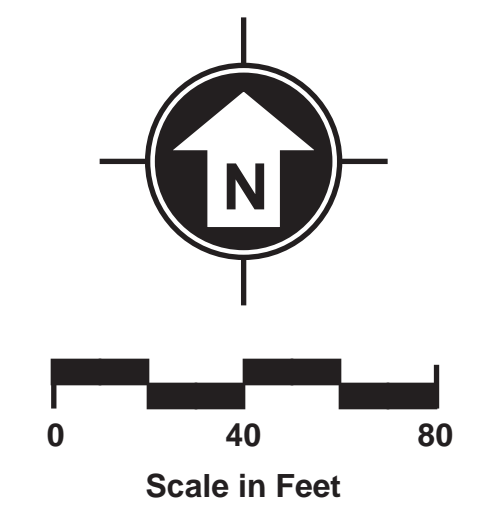


VICINITY MAP



COUNCIL DISTRICT: 1 COMMUNITY PLAN AREA: BLACK MOUNTAIN RANCH

DATE	ACTION	REFERENCE DOCUMENTS			
3-17-05	SITE ACQUIRED	RESO. NO. R-298134	COST \$	ACRES: 4.38	
	SITE DEDICATED	ORD. NO.	ACRES:		
	GDP CONSULTANT HIRED	RESO. NO.	NAME: Gillespie Design Group/for Developer		
	P&R BOARD APPROVAL	PF&R APPROVAL	DATE:		
	INITIAL DEVELOPMENT	CIP NO. 29-525.0	J.O. NO. 119108	DRWG. NO. 32026-D	
		CIP NO.	J.O. NO.	DRWG. NO.	
		CIP NO.	J.O. NO.	DRWG. NO.	
		CIP NO.	J.O. NO.	DRWG. NO.	
		CIP NO.	J.O. NO.	DRWG. NO.	
		CIP NO.	J.O. NO.	DRWG. NO.	

IMPROVEMENTS SUMMARY (DATA FROM AS-BUILT DRAWINGS)							
ITEM	QUANTITY	ITEM	QUANTITY	ITEM	QUANTITY	ITEM	QUANTITY
TOTAL SITE	4.38 AC.	TOT LOT	4,320 SF	PAVED WALKS	19,514 SF	SECURITY LTS.	31 STDS.
IMPROVED AREA	4.42 AC.	MULTI PURPOSE CT.	6,890 SF	PARK ROADS	SF	BALLFIELD LTS.	STDS.
TURF	3.10 AC.	TENNIS CTS.	SF	PARKING LOT	8,864 SF	TENNIS COURT LTS.	STDS.
SHRUB BED	.40 AC.	RESTROOM	480 SF	PARKING STALLS STANDARD	17	MULTI-PURPOSE CT.	STDS.
NATURAL	AC.	REC. BLDG.	SF	PARKING STALLS DISABLED	1	BACKSTOPS	1 EA.
D.G. PAVING	AC.	POOL BLDG.	SF	COURT GAME AREA	SF	BENCHES	10 EA.
DIRT INFIELDS	AC.	POOL DECK	SF	LAWN EDGING	2,360 LF	PICNIC TABLES	4 EA.
		POOL WATER	SF	DRINKING FOUNTAINS	1 EA.	TRASH RECEPTACLES	8 EA.
				BICYCLE RACKS	1 EA.	LIGHTED BOLLARDS	4 EA.
						REVISION	12/14/05 T.R.

CITY OF SAN DIEGO PARK AND RECREATION DEPARTMENT

THE GENERAL DEVELOPMENT PLAN

SOUTH VILLAGE

NEIGHBORHOOD PARK

LAMBERT COORDINATES: 302-1719
THOMAS BROTHERS PAGE: 1168, J-6

PSD
150