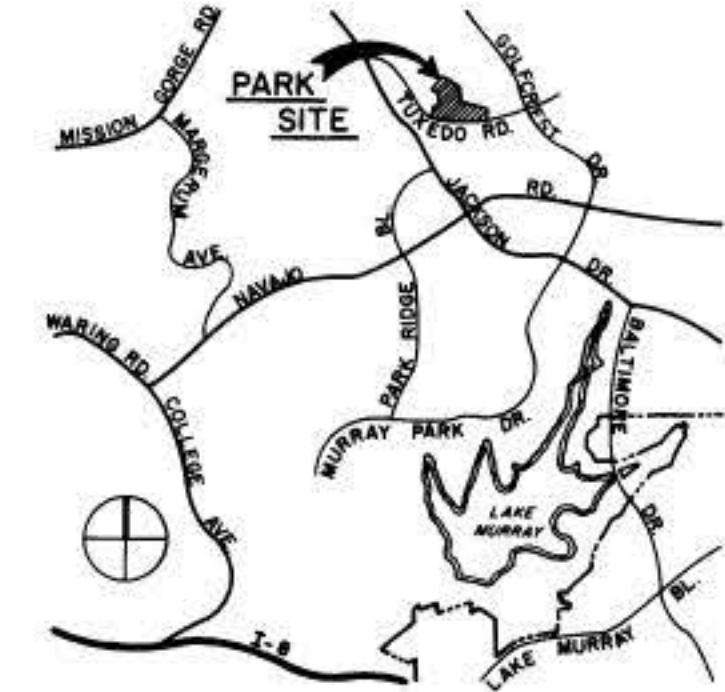
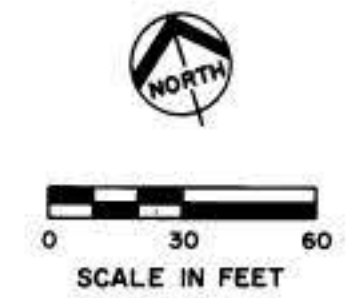
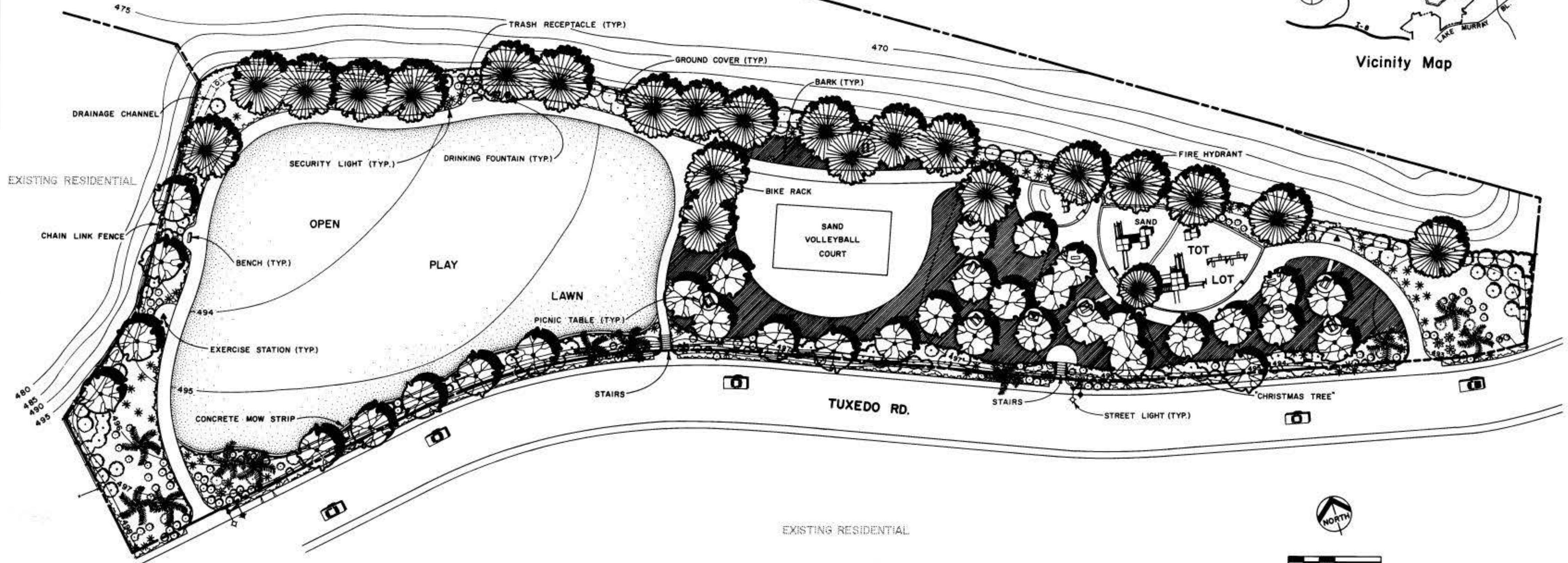




LOCATION MAP



Vicinity Map



DATA LOG FOR:			
DATE	ACTION	REFERENCE DOCUMENTS	
2-19-80	SITE ACQUIRED	RESO. NO. 251228	106,307.23 ACRES: 3.915
11-17-80	SITE DEDICATED	ORD. NO. 15718	COST: \$6,100 ACRES: 9.288
4-5-82	GDP CONSULTANT HIRED	RESO. NO. 268888	NAME WILEY GROUP
7-20-87	P&R BOARD APPROVAL	PF & R APPROVAL	
8-4-88	INITIAL DEVELOPMENT	CIP NO. 29-421	JO NO. 118909 DRWG. NO. 24722-D
6-1-94	ADDL. LIGHTING	CIP NO. 29-421	JO NO. 118909 DRWG. NO. 26856-D
		CIP NO.	JO NO. DRWG. NO.
		CIP NO.	JO NO. DRWG. NO.
		CIP NO.	JO NO. DRWG. NO.

IMPROVEMENTS SUMMARY (DATA FROM AS-BUILT DRAWINGS)					
ITEM	QUANTITY	ITEM	QUANTITY	ITEM	QUANTITY
TOTAL SITE	9.29 AC	PLAY AREA	6,030 SF	PAVED WALKS	12,720 SF
IMPROVED AREA	AC	MULTI PURPOSE CT	SF	PARK ROADS	SF
TURF	1.18 AC	TENNIS CTS	SF	PARKING LOT	SF
SHRUB BED	AC	RESTROOM	SF	" " STALLS STD	
NATURAL	5.66 AC	REC. BLDG	SF	" " STALLS HDCP	
OTHER LANDSCAPING	AC	POOL BLDG	SF	COURT GAME AREA	SF
DIRT INFIELDS	AC	" " DECK	SF	BACKSTOPS	EA
		" " WATER	SF	TENNIS CTS	EA
				LAWN EDGING	933 LF
				REVISION	T.R. 7/11/94

CITY OF SAN DIEGO PARK and RECREATION DEPARTMENT

THE GENERAL DEVELOPMENT PLAN

# TUXEDO

NEIGHBORHOOD PARK

COUNCIL DIST. NO. 7 COMM PLAN AREA NAVAJO - 23  
 LAMBERT COORDINATES 234 - 1755 THOMAS BROS P 55 A-2

PS.D. NO. 373