

DESIGN CONCEPT STATEMENT

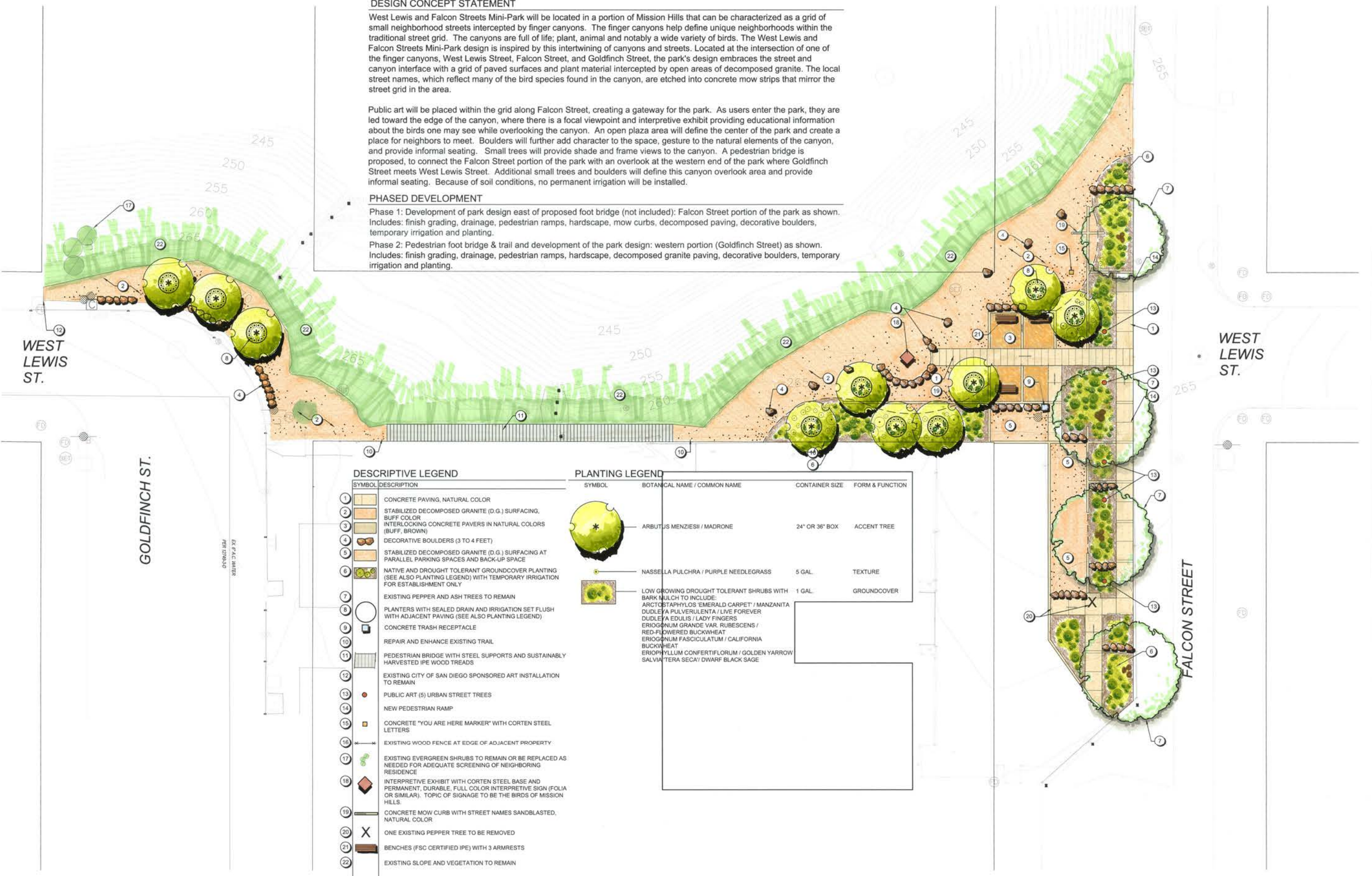
West Lewis and Falcon Streets Mini-Park will be located in a portion of Mission Hills that can be characterized as a grid of small neighborhood streets intercepted by finger canyons. The finger canyons help define unique neighborhoods within the traditional street grid. The canyons are full of life; plant, animal and notably a wide variety of birds. The West Lewis and Falcon Streets Mini-Park design is inspired by this intertwining of canyons and streets. Located at the intersection of one of the finger canyons, West Lewis Street, Falcon Street, and Goldfinch Street, the park's design embraces the street and canyon interface with a grid of paved surfaces and plant material intercepted by open areas of decomposed granite. The local street names, which reflect many of the bird species found in the canyon, are etched into concrete mow strips that mirror the street grid in the area.

Public art will be placed within the grid along Falcon Street, creating a gateway for the park. As users enter the park, they are led toward the edge of the canyon, where there is a focal viewpoint and interpretive exhibit providing educational information about the birds one may see while overlooking the canyon. An open plaza area will define the center of the park and create a place for neighbors to meet. Boulders will further add character to the space, gesture to the natural elements of the canyon, and provide informal seating. Small trees will provide shade and frame views to the canyon. A pedestrian bridge is proposed, to connect the Falcon Street portion of the park with an overlook at the western end of the park where Goldfinch Street meets West Lewis Street. Additional small trees and boulders will define this canyon overlook area and provide informal seating. Because of soil conditions, no permanent irrigation will be installed.

PHASED DEVELOPMENT

Phase 1: Development of park design east of proposed foot bridge (not included): Falcon Street portion of the park as shown. Includes: finish grading, drainage, pedestrian ramps, hardscape, mow curbs, decomposed paving, decorative boulders, temporary irrigation and planting.

Phase 2: Pedestrian foot bridge & trail and development of the park design: western portion (Goldfinch Street) as shown. Includes: finish grading, drainage, pedestrian ramps, hardscape, decomposed granite paving, decorative boulders, temporary irrigation and planting.



DESCRIPTIVE LEGEND

SYMBOL	DESCRIPTION
1	CONCRETE PAVING, NATURAL COLOR
2	STABILIZED DECOMPOSED GRANITE (D.G.) SURFACING, BUFF COLOR
3	INTERLOCKING CONCRETE PAVERS IN NATURAL COLORS (BUFF, BROWN)
4	DECORATIVE BOULDERS (3 TO 4 FEET)
5	STABILIZED DECOMPOSED GRANITE (D.G.) SURFACING AT PARALLEL PARKING SPACES AND BACK-UP SPACE
6	NATIVE AND DROUGHT TOLERANT GROUND COVER PLANTING (SEE ALSO PLANTING LEGEND) WITH TEMPORARY IRRIGATION FOR ESTABLISHMENT ONLY
7	EXISTING PEPPER AND ASH TREES TO REMAIN
8	PLANTERS WITH SEALED DRAIN AND IRRIGATION SET FLUSH WITH ADJACENT PAVING (SEE ALSO PLANTING LEGEND)
9	CONCRETE TRASH RECEPTACLE
10	REPAIR AND ENHANCE EXISTING TRAIL
11	PEDESTRIAN BRIDGE WITH STEEL SUPPORTS AND SUSTAINABLY HARVESTED IPE WOOD TREADS
12	EXISTING CITY OF SAN DIEGO SPONSORED ART INSTALLATION TO REMAIN
13	PUBLIC ART (5) URBAN STREET TREES
14	NEW PEDESTRIAN RAMP
15	CONCRETE "YOU ARE HERE MARKER" WITH CORTEN STEEL LETTERS
16	EXISTING WOOD FENCE AT EDGE OF ADJACENT PROPERTY
17	EXISTING EVERGREEN SHRUBS TO REMAIN OR BE REPLACED AS NEEDED FOR ADEQUATE SCREENING OF NEIGHBORING RESIDENCE
18	INTERPRETIVE EXHIBIT WITH CORTEN STEEL BASE AND PERMANENT, DURABLE, FULL COLOR INTERPRETIVE SIGN (FOLIA OR SIMILAR). TOPIC OF SIGNAGE TO BE THE BIRDS OF MISSION HILLS.
19	CONCRETE MOW CURB WITH STREET NAMES SANDBLASTED, NATURAL COLOR
20	ONE EXISTING PEPPER TREE TO BE REMOVED
21	BENCHES (FSC CERTIFIED IPE) WITH 3 ARMRESTS
22	EXISTING SLOPE AND VEGETATION TO REMAIN

PLANTING LEGEND

SYMBOL	BOTANICAL NAME / COMMON NAME	CONTAINER SIZE	FORM & FUNCTION
	ARBUTUS MENZIESII / MADRONE	24" OR 36" BOX	ACCENT TREE
	NASSELLA PULCHRA / PURPLE NEEDLEGRASS	5 GAL.	TEXTURE
	LOW GROWING DROUGHT TOLERANT SHRUBS WITH BARK MULCH TO INCLUDE: ARCTOSTAPHYLOS EMERALD CARPET / MANZANITA DUDLEYA PULVERULENTA / LIVE FOREVER DUDLEYA EDULIS / LADY FINGERS ERIOGONUM GRANDE VAR. RUBESCENS / RED-FLOWERED BUCKWHEAT ERIOGONUM FASCICULATUM / CALIFORNIA BUCKWHEAT ERIOPHYLLUM CONFERTIFLORUM / GOLDEN YARROW SALVIA TERA SECA / DWARF BLACK SAGE	1 GAL.	GROUND COVER

GENERAL DEVELOPMENT PLAN

WEST LEWIS AND FALCON STREETS MINI-PARK
CITY OF SAN DIEGO, CALIFORNIA