

# Open Space Trails: Mira Mesa Community Plan Update

Planning Department

September 21, 2020

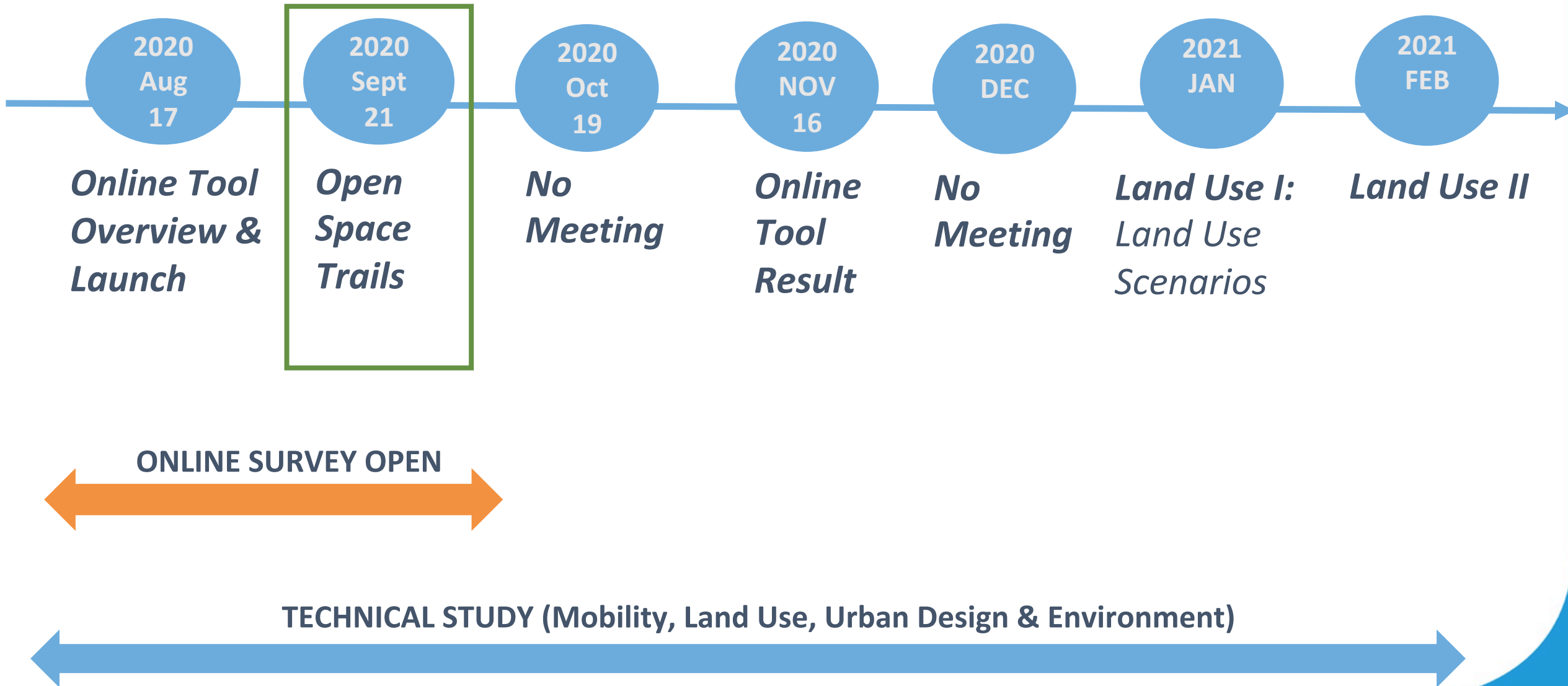
Webinar - Mira Mesa Community Plan Update Advisory Committee



## **AGENDA**

- 1. Call to Order**
- 2. Non-Agenda Public Comment**
- 3. Presentation**
  - **Update & Schedule**
  - **Proposed Trails**
- 4. Discussion**





# Online Community Engagement Tool (OCET)

- 572\* participants!
- Last day to fill out the survey is September 30!
- OCET can be accessed on the project website: [www.PlanMiraMesa.org](http://www.PlanMiraMesa.org)





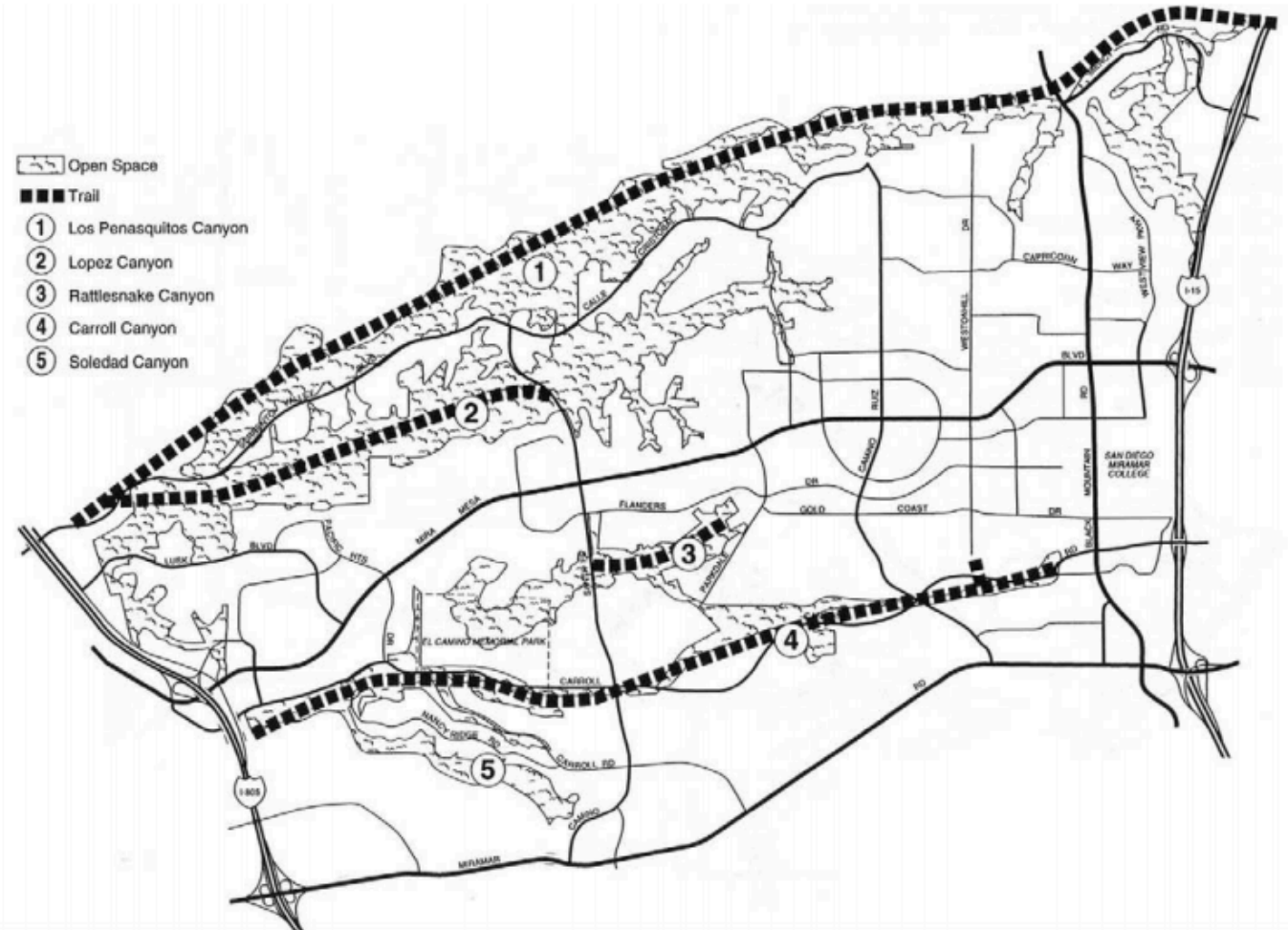
A photograph of a dirt trail winding through a dry, hilly landscape. The trail is made of light-colored gravel and dirt. In the background, there are several trees, including a large, dark green tree on the left. The sky is blue with some white clouds. A yellow flag is visible on a pole in the distance. A dark blue horizontal bar is overlaid across the middle of the image, containing the text "Proposed Trails" in white.

# Proposed Trails



## Trails Definition

- Most often found in recreation or open space areas
- Typically unpaved paths
- Not adjacent to roads used for recreational purposes



1992 Mira Mesa Community Plan Recommended Trail System



## Previous Meetings

*Discussed existing conditions, community input, and draft goals & policies related to:*

- February 21, 2019 – Parks & Recreation
- October 15, 2018 - Conservation & Sustainability II (Open Space)
- September 27, 2018 - Conservation & Sustainability I (Open Space)





## Proposed Trails Evaluation

- **Laura Ball - Open Space Division**  
*Project Officer II, Parks and Recreation Department*
- **Gina Washington - Open Space Division**  
*Senior Park Ranger, Parks and Recreation Department*
- **Scott Sandel – Landscape Architect**  
*Park Planner, Planning Department*
- **Alex Frost – Mira Mea CPU Project Coordinator**  
*Senior Planner, Planning Department*





- Official Trails
- Proposed Trails
- Proposed Trails 3 Roots/Stone Creek

Calle Cristobal Trail

Canyon Hills Trails

Rattlesnake Canyon Trail

Miramar Gateway Trail

Sorrento Rim Trail

Rattlesnake Canyon Loop

Carroll Creek Trail





- Official Trails
- Proposed Trails

Los Peñasquitos  
Canyon Preserve



Mercy Rd

Canyon Hills Trails

Black Mountain Rd

Westview Pkwy





- Official Trails
- Proposed Trails

Existing Trail

Calle Cristobal Trail

Existing Parking

Approved Development  
Tierra Alta  
(8 SFHs)

Los Peñasquitos Canyon Preserve

Caminito Rodar

Calle Cristobal

Lopez Canyon

Lopez Ridge Park





- Official Trails
- Proposed Trails

Los Peñasquitos Canyon Preserve

Sorrento Valley Blvd

Gap in Existing Trail

Existing Parking

Sorrento Rim Trail

Gap in Existing Trail

Existing Trail

Lopez Canyon

Camino Santa Fe

Existing Trail

Mira Mesa Blvd

Existing Parking

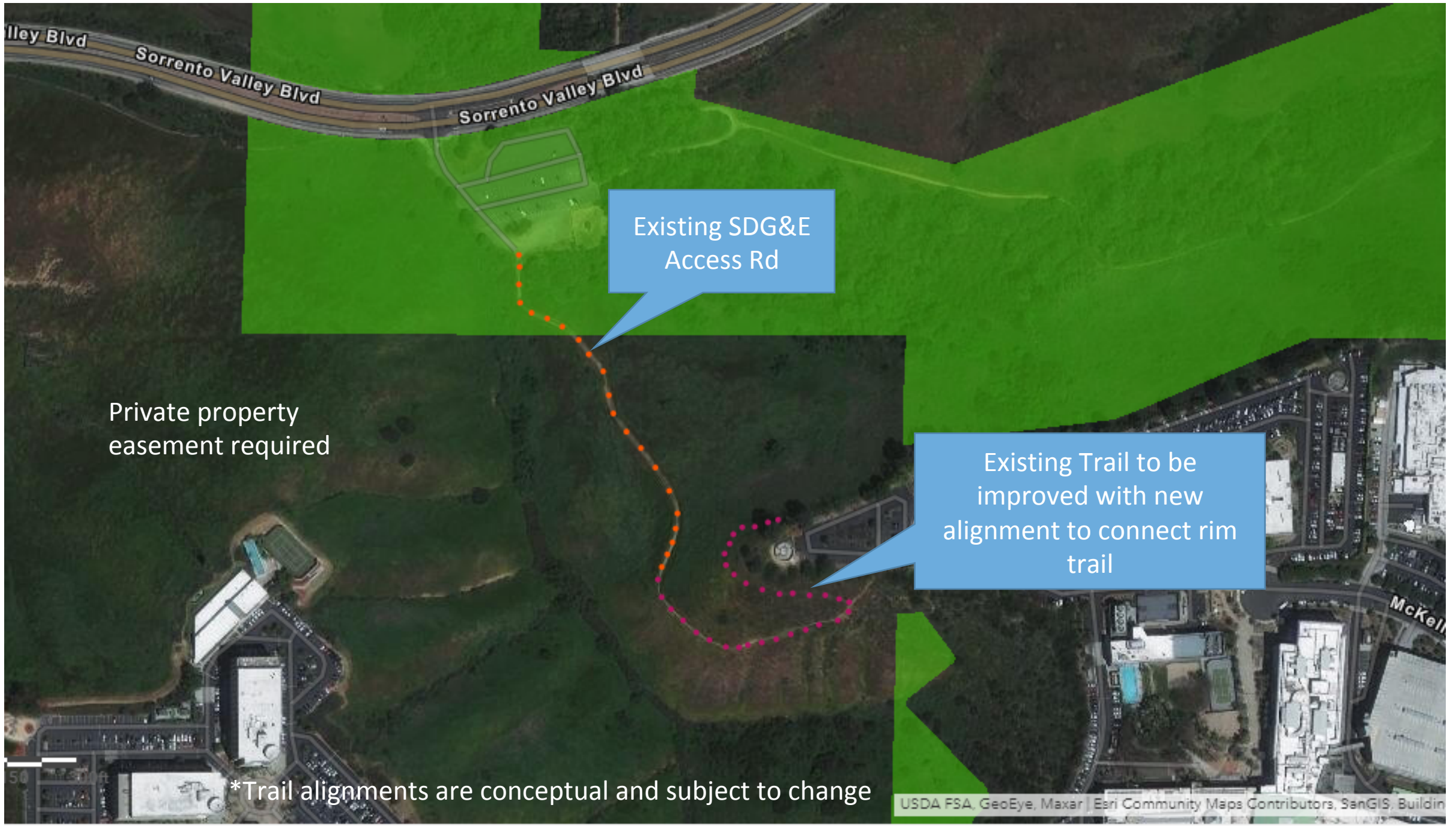
Google Earth

\*Trail alignments are conceptual and subject to change

3000 ft







lley Blvd

Sorrento Valley Blvd

Sorrento Valley Blvd

Existing SDG&E  
Access Rd

Private property  
easement required

Existing Trail to be  
improved with new  
alignment to connect rim  
trail

McKel

\*Trail alignments are conceptual and subject to change



- Proposed Trails
- Proposed Trails 3 Roots
- Proposed Multi-Use Path

Rattlesnake Canyon Loop Trail

Mesa Rim Road

Camino Santa Fe

Proposed 3 Roots

Connection to Fenton Property's Allen Jones Park

Fenton Tech Park

Cemetery Connection

Cemetery



Google Earth

Proposed Carroll Canyon Rd

\*Trail alignments are conceptual and subject to change

1000 ft



- Proposed Trails
- Proposed Trails 3 Roots

Flanders Road

Rattlesnake Canyon Trail

Maddox Park

Salk Elementary

Camino Santa Fe

Parkdale Ave

Proposed Parkdale  
Overlook

Proposed Development 3 Roots

\*Trail alignments are conceptual and subject to change







— Proposed Trails  
— Proposed Trails 3 Roots/Stone Creek

Rattlesnake Canyon Trail

Proposed Parkdale Overlook

Carroll Creek Trail

Proposed Development Stone Creek

Proposed Development 3 Roots

Proposed Bridge

Community Park Trail

Connection to CC Road Multi-Use Path

Camino Santa Fe





- Proposed Trails
- Proposed Trails Stone Creek/3 Roots

Rim Trail

Jade Coast Dr

Camino Ruiz

Jade Coast Dr

Gold Coast Dr

Hourglass Park

Black Mountain Rd

Proposed Development Stone Creek

Miramar Gateway Trail(s)

Carroll Creek Trail

Carroll Canyon Rd

Proposed Development 3 Roots

\*Trail alignments are conceptual and subject to change

2000 ft





A photograph of a dirt road leading towards a golf course. In the background, a green is visible with a yellow flag. The sky is blue with scattered white clouds. A large blue banner with the word 'Discussion' in white text is overlaid across the middle of the image.

# Discussion



# Open Space Trails: Mira Mesa Community Plan Update

Planning Department

September 21, 2020

Webinar - Mira Mesa Community Plan Update Advisory Committee