

I, Allen H. Wright, City Clerk of the City of San Diego, State of California, hereby certify that this map is a true and correct copy of the Pueblo map of the City of San Diego, made under instructions from the U.S. Surveyor General by John C. Hays, Dep'y Survey'r July 1858

Date: Feb 25 1915 Allen H. Wright
City Clerk of the City of San Diego, Calif.

I, W.M. Rumspey, City Engineer of the City of San Diego, State of California, hereby certify that this map has been made under my supervision and is a true and correct copy of the Pueblo map of the City of San Diego, made under instructions from the U.S. Surveyor General by John C. Hays, Dep'y Survey'r July 1858

Date: Feb 25 1915 W.M. Rumspey
City Engineer of the City of San Diego, Calif.

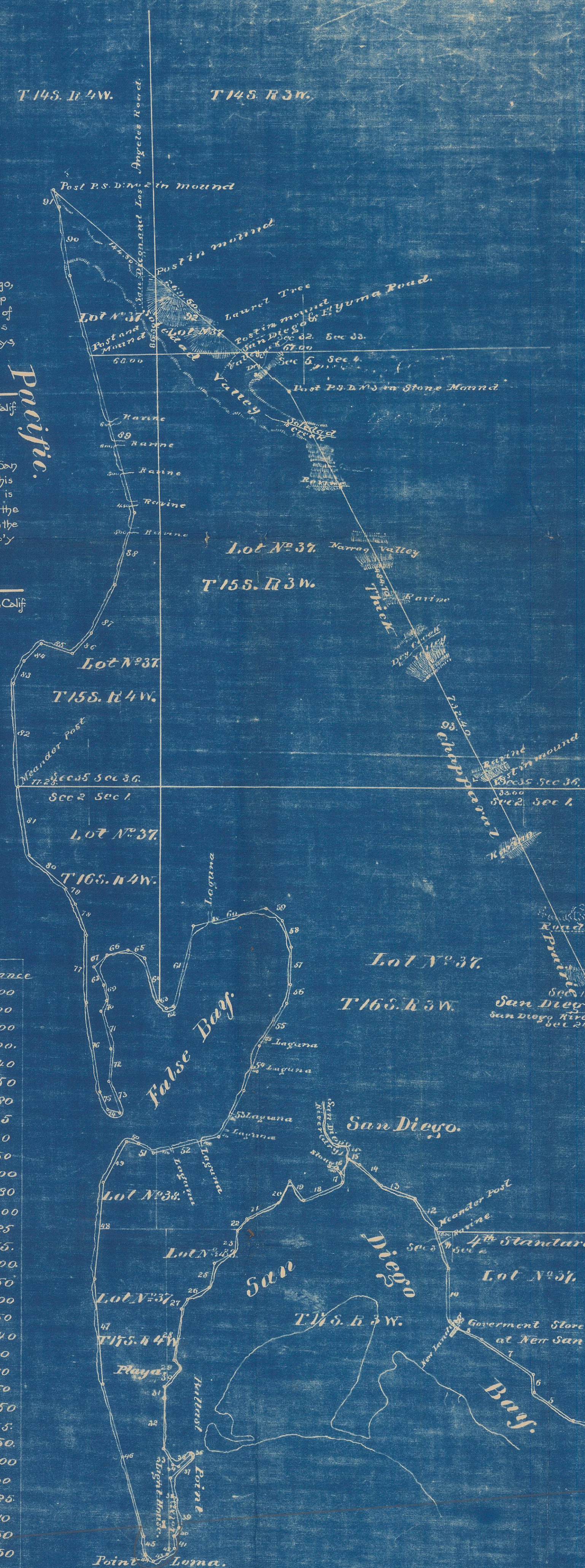
PLAT
of the
PUEBLO LANDS OF SAN DIEGO
Finally confirmed to the
PRESIDENT and TRUSTEES of the CITY SAN DIEGO
Surveyed under Instructions from the
U.S. SURVEYOR GENERAL
by
John C. Hays Dep't Survey'r
July 1858
Containing **48,556 ⁵³/₁₀₀ Acres.**
Scale 800 to 1 inch.
Variation 15' 15" East.

Note: Notice of the approval of this Plat and its retention for four weeks subject to inspection was published from _____ to _____ in pursuance the Act of Congress of June 14th 1860

J. W. Manderville
U.S. Survey'r Gen'l. Calif.
T 16th R 2^W.

Boundaries.

N ^o	Course	Distance	N ^o	Course	Distance
1.	N 33° W	40.00	49.	N 29 1/2° E	54.00
2.	N 26 1/2° W	19.50	50.	S 74 1/2° E	15.00
3.	N 55 1/2° W	28.00	51.	S 61° E	18.00
4.	N 80 1/2° W	37.00	52.	N 76 1/2° E	75.00
5.	N 53 1/2° W	55.00	53.	N 29 1/2° E	56.40
6.	N 5° E	21.00	54.	N 20° E	51.50
7.	N 57 1/2° W	73.00	55.	N 33° E	53.80
8.	N 67° W	30.00	56.	N 8 1/2° E	20.35
9.	N 31° W	9.50	57.	N 4° E	41.20
10.	N 1° W	59.00	58.	N 21° W	30.50
11.	N 18 1/2° W	47.95	59.	N 51° W	22.00
12.	N 36 1/2° W	41.50	60.	S 78 1/2° W	83.80
13.	N 67 1/2° W	40.00	61.	S 14 1/2° W	92.00
14.	N 52° W	35.00	62.	S 74° W	8.25
15.	N 60° W	12.50	63.	N 43° W	12.75
16.	S 28 1/2° W	19.00	64.	N 16° W	50.00
17.	S 16 1/2° E	10.00	65.	N 67 1/2° W	21.50
18.	S 64 1/2° W	49.00	66.	S 75 1/2° W	23.00
19.	N 28 1/2° W	27.50	67.	S 46 1/2° W	19.50
20.	S 23 1/2° E	29.50	68.	S 26° E	20.40
21.	S 68° W	40.60	69.	S 11 1/2° E	17.30
22.	S 40° W	15.85	70.	S 26 1/2° W	13.60
23.	S 14° W	27.50	71.	S 16 1/2° E	41.60
24.	S 63 1/2° W	27.00	72.	S 4° W	36.50
25.	S 12° W	29.00	73.	S 19 1/2° E	38.55
26.	S 63 1/2° W	28.00	74.	N 72° W	13.50
27.	S 32° W	13.00	75.	N 28 1/2° W	20.00
28.	S 8° W	56.50	76.	N 1 1/2° W	100.00
29.	S 34 1/2° E	11.70	77.	N 9° W	73.25
30.	S 38 1/2° W	25.70	78.	N 21° W	39.10
31.	S 6° W	11.30	79.	N 30° W	21.50
32.	S 12 1/2° W	58.50	80.	N 48° W	52.50
33.	S 30 1/2° E	20.10	81.	N 9 1/2° W	75.00
34.	S 65° E	7.50	82.	N 2° W	115.00
35.	N 49 1/2° E	21.00	83.	N 26 1/2° E	26.20
36.	S 5° W	2.00	84.	N 43 1/2° E	27.00
37.	S 46 1/2° W	33.50	85.	S 71° E	36.50
38.	S 7° E	34.00	86.	N 42 1/2° E	32.50
39.	S 13 1/2° E	23.50	87.	N 29° E	59.00
40.	S 48° W	8.70	88.	N 15° E	82.50
41.	S 1 1/2° E	13.00	89.	N 13 1/2° W	270.00
42.	S 50 1/2° W	11.00	90.	N 6° W	77.00
43.	S 58° W	17.00	91.	N 23° W	16.00
44.	N 47° W	12.00	92.	S 47 1/2° E	340.00
45.	N 2 1/2° W	21.00	93.	S 21 1/2° E	779.00
46.	N 45° W	175.00	94.	S 17° E	490.00
47.	N 4 1/2° W	17.00	95.	S 71° W	98.90
48.	N 5 1/2° E	108.50			



The Field Notes of the Pueblo Lands of San Diego and from which this Plat has been made out have been examined and approved, and are on file in this Office
U.S. Surveyor General's Office
San Francisco California.
December 4th 1858.

J. W. Manderville
U.S. Survey'r Gen'l. Calif.