



Pure Water North City Phase 1 Construction Projects
Community Working Group Meeting 5 – University City

Date: June 5, 2019, 4:30 p.m. – 7:30 p.m.

Location: North City Water Reclamation Plant

Meeting Agenda

| | | |
|------|--|-----------------------|
| 4:30 | Welcome | J. Helminski |
| 4:35 | Agenda Introductions | N. Hentschel |
| 4:45 | Pure Water Program Updates | J. Helminski |
| 4:55 | Project Schedule Update & Overview of Constructability Reviews | S. McCarty/S. Lindsay |
| 5:15 | Review of Working Group Matrix Updates & Bid Specification Language | N. Hentschel |
| 6:00 | DINNER | |
| 6:30 | Review of Working Group Matrix Updates & Bid Specification Language (cont.) | N. Hentschel |
| 7:15 | Public Comment | N. Hentschel |
| 7:30 | Closing and Next Steps/Future Meetings | N. Hentschel |

Pure Water San Diego Phase 1 University City Working Group: Meeting 5

June 5, 2019

- **Welcome**
- **Agenda Review**
- **Pure Water Program Updates**
- **Project Schedule Update & Overview of Constructability Reviews**
- **Review of Working Group Matrix Updates & Bid Specification Language**
- **DINNER**
- **Review of Working Group Matrix Updates & Bid Specification Language (cont.)**
- **Public Comment**
- **Closing and Next Steps**

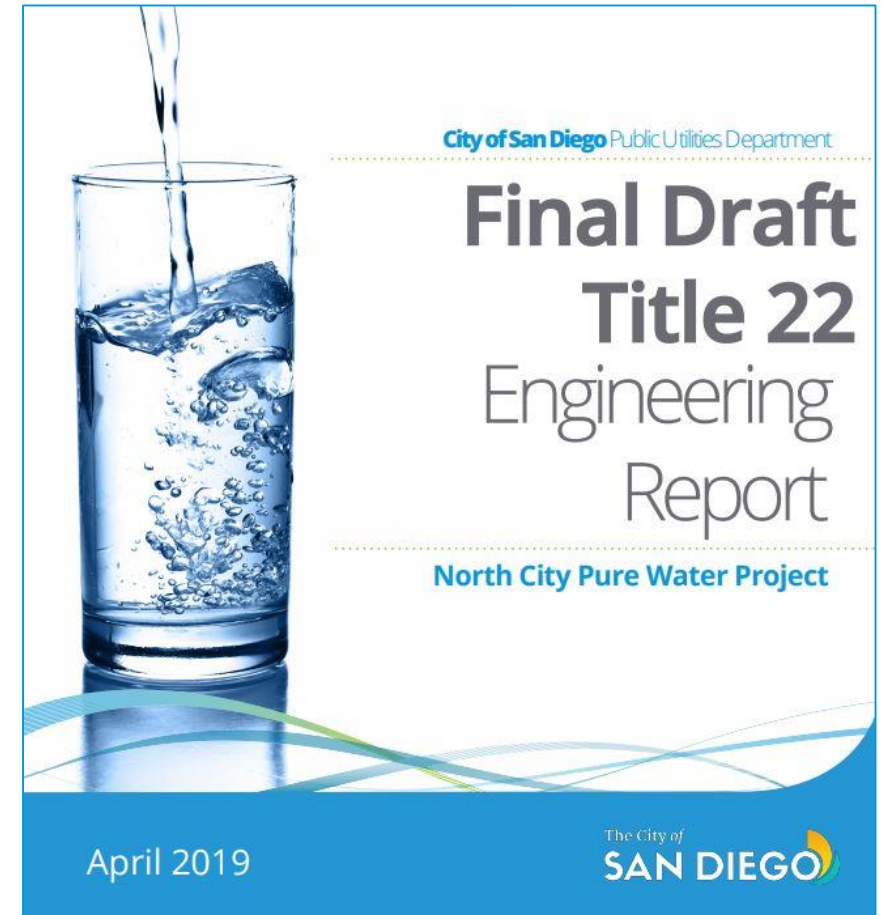
Pure Water Program Updates

John Helminski

- Pure Water receives \$614 million in low-interest loans from the U.S. EPA's Water Infrastructure Finance and Innovation Act (WIFIA) in November 2018
- First-Ever Advanced Water Treatment Operator Training Course launched in February 2019
- Pure Water receives \$9 million grant from Bureau of Reclamation in February 2019



- **Title 22 Engineering Report for the Phase 1 projects is finalized and submitted to the Division of Drinking Water in April 2019**
- **Notice to Proceed for North City Water Reclamation Plant Early Site Work issued in May 2019**
- **State Water Board will adopt at its June 18, 2019 board meeting the FY20 Clean Water and Drinking Water SRF Intended Use Plan. Allocation for the Pure Water Program totals \$646.6 million**



You're Invited! Pure Water Day Open House

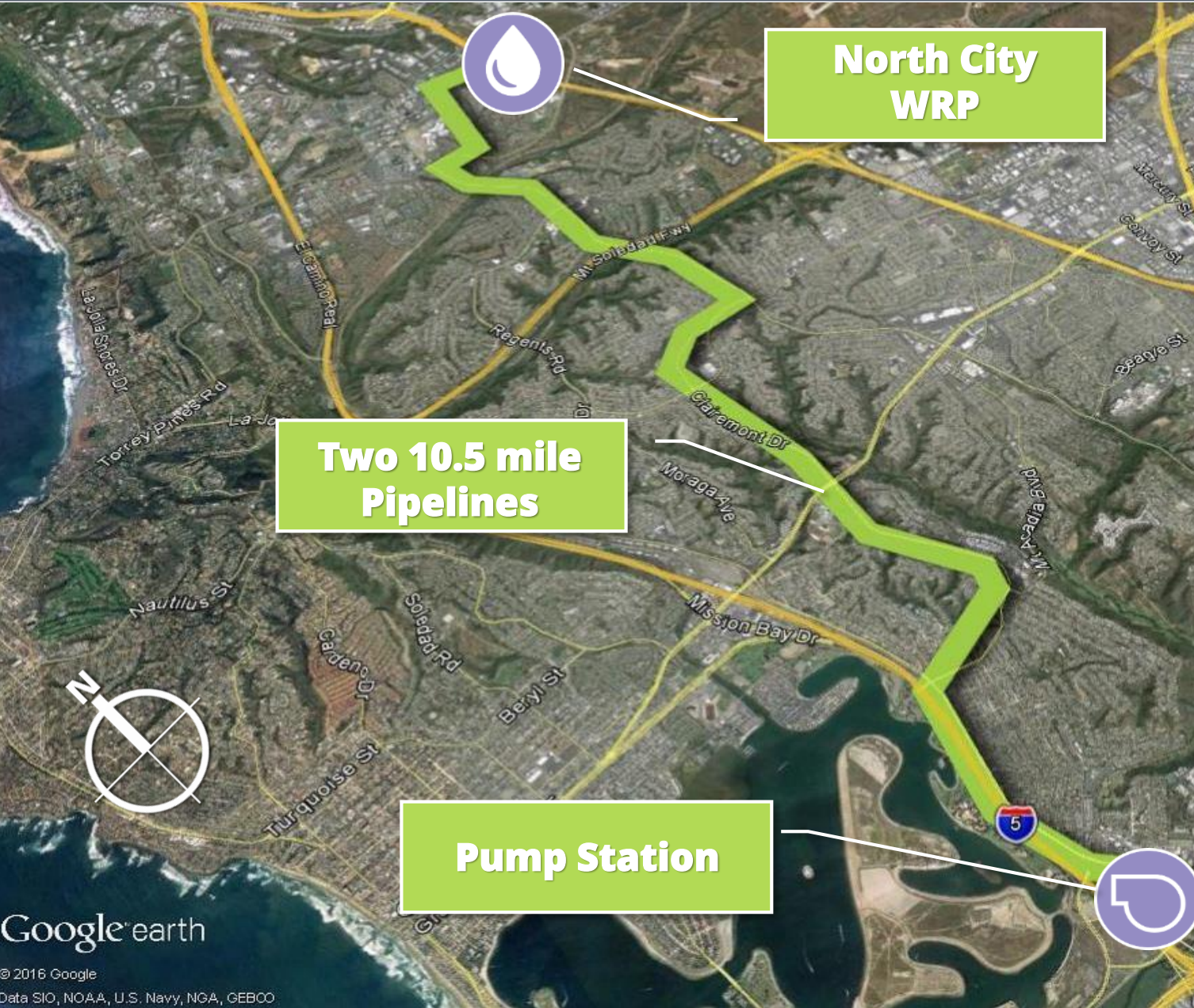
- **When:** Saturday, June 22, 2019, 10 a.m. – 3 p.m.
- **Where:** North City Water Reclamation Plant
- **Bring the whole family:**
 - *Tour the Pure Water Demonstration Facility*
 - *Participate in educational youth activities*
 - *Learn more about Phase 1 facilities and pipelines that will soon begin construction*
- **Previous Open Houses were held in 2016 and 2017**
- **RSVP to reserve your tour spot at tours.purewatersd.org**



Project Schedule Update & Overview of Constructability Reviews

Sean McCarty/Steve Lindsay

SD Morena Northern Alignment Schedule



North City
WRP

Two 10.5 mile
Pipelines

Pump Station

- Bid Advertised: June 2019
- Notice to Proceed: December 2019
- Substantial Construction Completion: October 2022
- Commissioning: 2023

- **Structured review of construction bid documents for:**
 - *Bidability*
 - *Constructability*
 - *Potential coordination issues*
 - *Environmental monitoring considerations*
 - *Geotechnical conditions*
 - *Traffic control considerations*
 - *Timing of pavement restoration*
 - *Utility conflict challenges*
 - *Alternative construction methods or configurations*

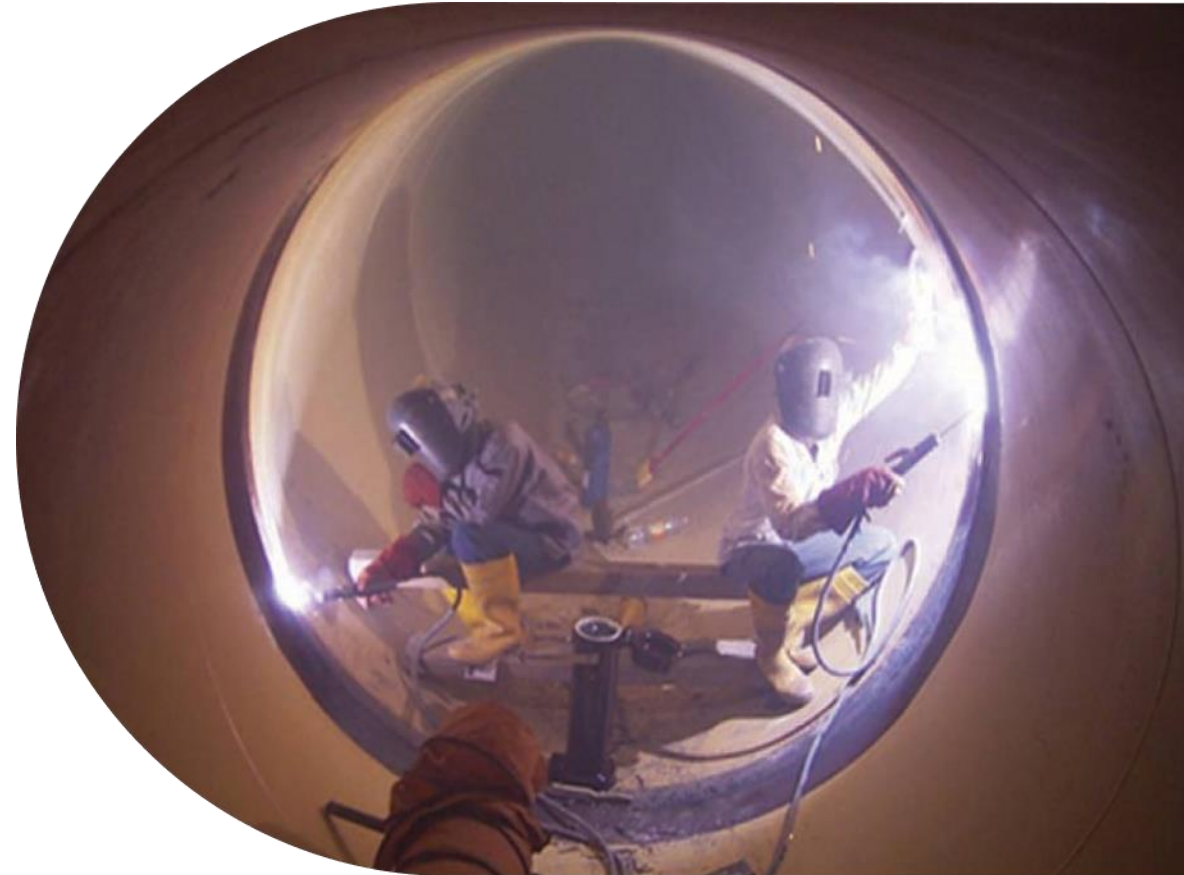




- **Change to steel eliminates HDPE “tail” protruding from the trench at the end of each work shift and avoids impact to traffic**
- **A large open trench is needed to realize benefits of HDPE installation. This is not conducive to the daily trench and road restoration needed at the end of each work day**

Benefits of Welded Steel Pipeline

- **Interior welding of joints enables trench to backfilled and road restored as welding operation continues**
- **Shorter steel pipe segments will allow for flexibility to avoid relocation and shutdown of numerous underground utilities**



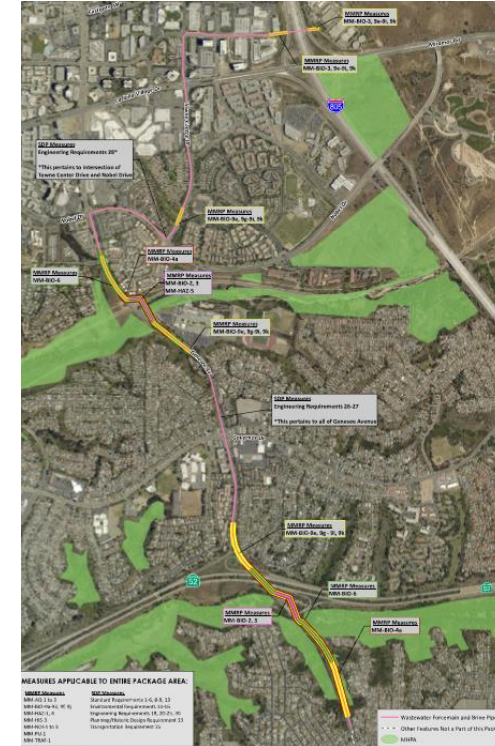
- **Preparation of Environmental Compliance Plan (ECP) defines structure for mitigation during construction:**
 - *Comprehensive document to reinforce requirements of the Environmental Impact Report*
 - *Focuses on protecting sensitive habitats in Rose Canyon and Marian Bear Memorial Park*
 - *Outlines specific plan to leave nesting birds undisturbed during construction activities*
 - *Defines criteria for habitat restoration as part of project completion*

Pure Water San Diego Program
Environmental Compliance Plan
for the North City Project

Prepared for:
City of San Diego Public Utilities Department
9192 Topaz Way
San Diego, CA 92123

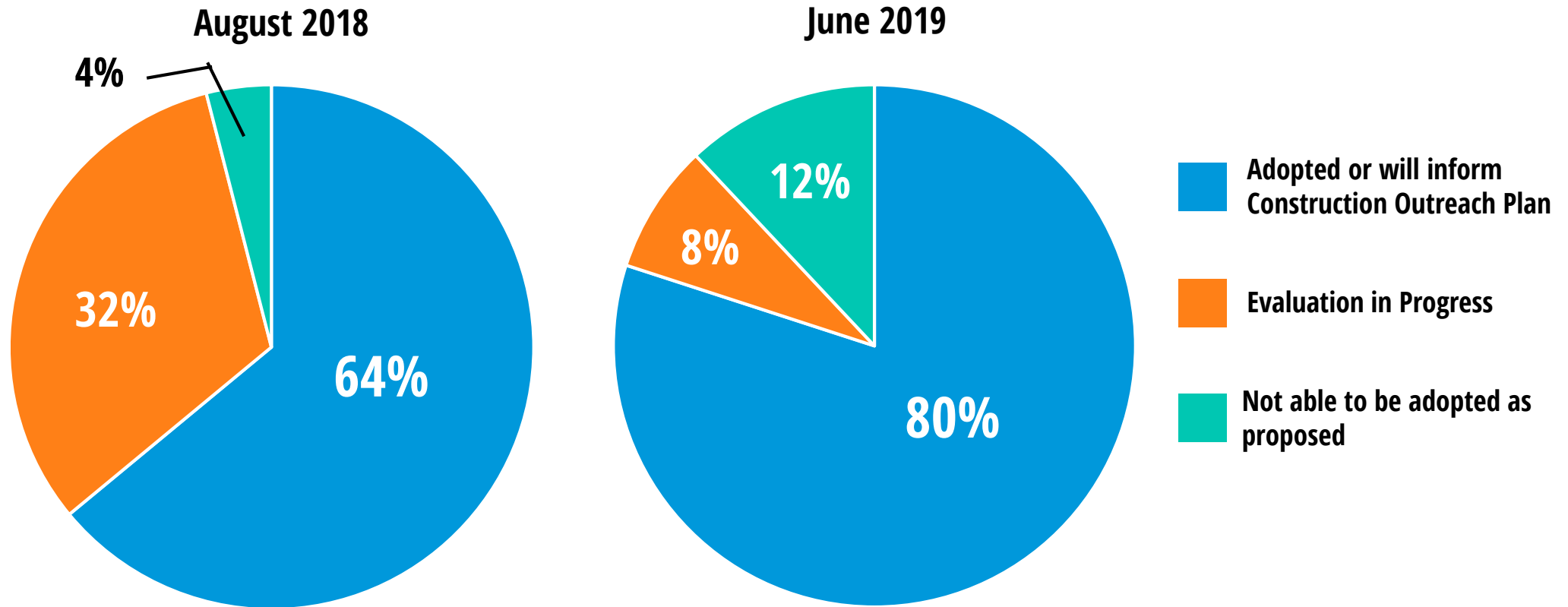
Prepared by:
HELIX Environmental Planning, Inc.
7578 El Cajon Boulevard
La Mesa, CA 91942

May 2019 | CHM-06



- **Contractor will be required to implement pavement restoration in five phases.**
 - *Phases will be approximately one mile long.*
 - *Phases are timed that the portion of alignment is complete of all work.*

Review of Working Group Matrix & Bid Specification Language



- 80 percent of recommendations were adopted or will inform the Construction Outreach Plan
- 8 percent of recommendations are under evaluation
- 12 percent of recommendations are not able to be adopted as proposed

- **Bid release starting in June 2019**
 - **Morena Alignment North**
- **Contract Award and Notice to Proceed Tentatively December 2019**
- **Proposed Working Group Update Meeting Tentatively December 2019**
 - **Meet the contractor**
 - **Construction Outreach Plan review**



Public Comment

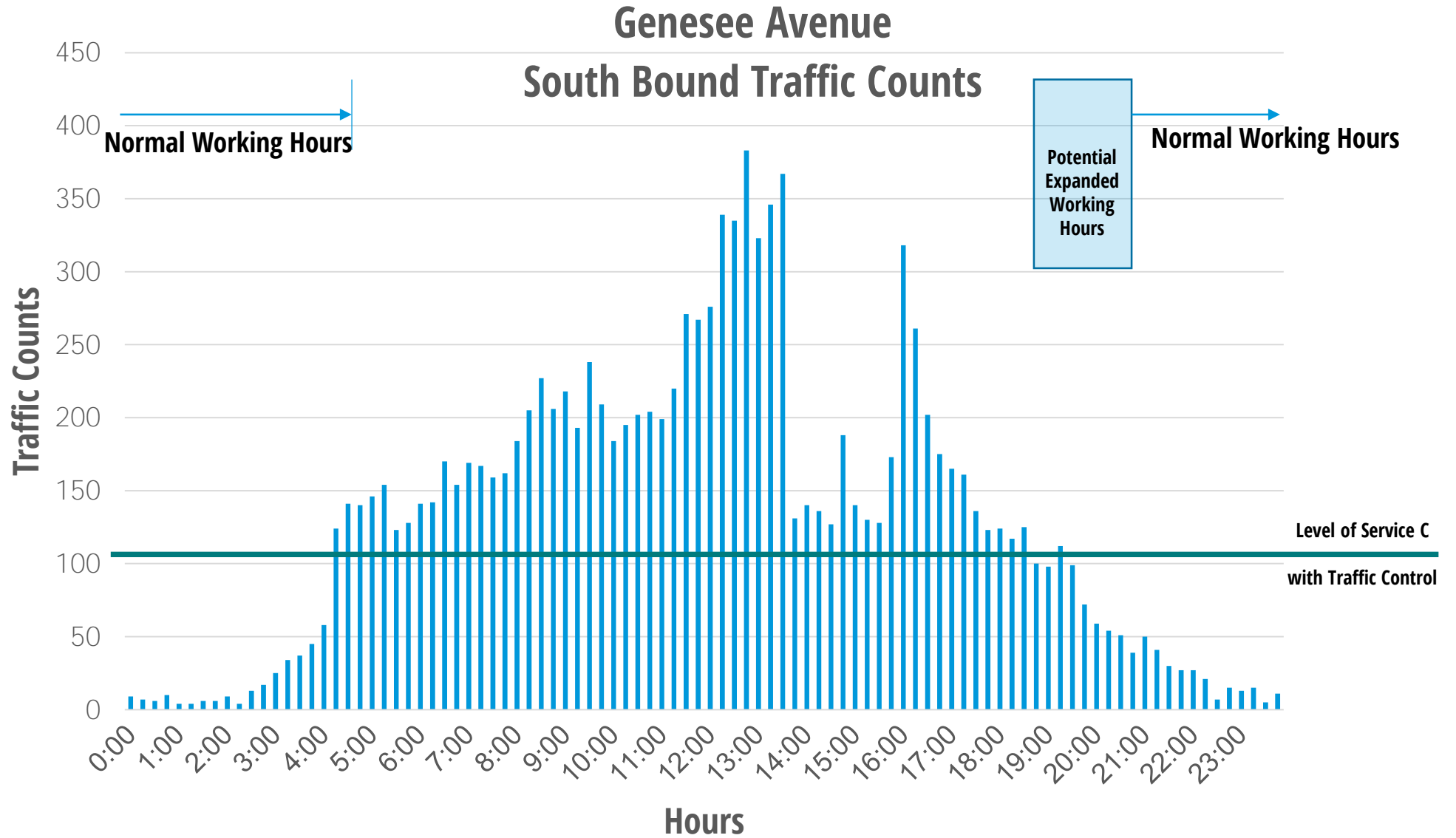
Genesee Avenue (Northbound) South of Radcliffe Lane



Genesee Avenue (Northbound) at UC High School



SD Traffic Study of Genesee at Governor





Genesee at Governor Technical Memo

| Scenario | Factor of Safety WWFM | Factor of Safety Brine/Centrates Pipeline | Construction Duration (Work days) | Estimated Construction Cost |
|---|-----------------------|---|-----------------------------------|-----------------------------|
| 1. Open Cut Construction | 6.95 to 7.88 | 4.00 to 8.45 | 15 | \$2.1M |
| 2. Open Cut Construction with Concrete Encasement | 6.95 to 7.88 | 4.00 to 8.45 | 32 | \$3.6M |
| 3. Tunneling of Pipelines within Casings | 6.95 to 7.88 | 14.90 to 17.41 | 60 | \$8.1M |

- **Open Cut Construction is the recommended option as it provides for a factor of safety more than double industry standard, with the least construction duration at the most economical price.**



Working Group Recommendations & Outcomes

| Working Group | Number of Recommendations Provided | Adopted/Used to Inform Plan | Evaluation in Progress | Not Adopted | Adopted/Used to Inform Plan (%) | Evaluation in Progress (%) | Not Adopted (%) |
|--------------------------------|------------------------------------|-----------------------------|------------------------|-------------|---------------------------------|----------------------------|-----------------|
| Bay Park/ Morena | 21 | 13 | 5 | 3 | 62 | 24 | 14 |
| Clairemont | 25 | 18 | 4 | 3 | 72 | 16 | 12 |
| University City | 25 | 20 | 2 | 3 | 80 | 8 | 12 |
| Scripps Ranch/ Miramar | 42 | 34 | 5 | 3 | 81 | 12 | 7 |
| TOTAL (all four groups) | 113 | 85 | 16 | 12 | 75 | 20 | 10 |

- **More than 100 recommendations from four groups**
- **75 percent of recommendations were adopted or will inform the Construction Outreach Plan**
- **20 percent of recommendations are under evaluation**
- **10 percent of recommendations are not able to be adopted**

“WHITEBOOK” 801-1.4.

Trees or shrubs which have been identified to remain as shown on the Plans shall be protected. Construction fencing minimum 5 feet (1.5m) high shall be placed around the drip line of the tree or cluster of trees to protect the entire area. No material shall be stored nor shall equipment be permitted within the fenced area. Pruning of the tree canopy shall not be permitted without written recommendation of a certified arborist submitted and approved by the Engineer. Digging or excavation shall not occur under the drip line of the tree unless authorized by the Engineer. Failure to properly protect the identified trees may result in charges based on the assessed value of the tree and other damages once valued by a certified arborist.

Work Restrictions. The items below are in reference to the Morena Conveyance Northern Drawings **40067-66-D to 40067-82-D:**

1. Contractor shall remain available through commissioning of the entire conveyance system to assist as required in the start-up and integration activities.
2. Contractor shall coordinate with University City High School to avoid working hours during any special events that are planned to occur at the high school.
3. Contractor shall maintain left turn access from Centurion Way to Genesee Avenue and from Genesee Avenue to Centurion Way during non- work hours unless University City is on a summer, winter or spring recess. Contractor shall request approval from the Resident Engineer 30-days prior to anticipated closure.
4. Work within the North City Water Reclamation Plant (NCWRP) shall be closely coordinated with the Resident Engineer and the NCWRP Contractor. Work shall be limited from 70 working days after NTP to 230 working days after NTP. (*NTP: 11/25/2019, WRP Schedule Activity, C22941 to C15801*). The Contractor shall be limited to staging area identified as 20-feet offset of the Temporary Concrete Pad identified on 40067-166-D not including the roadway surface. The Contractor shall access the NCWRP off of Eastgate Mall and coordinate usage of NCWRP access roads.
5. Contractor shall ensure access to all properties along the alignment during their hours of operations.
6. Contractor, Sub-consultant and associated individuals shall be prohibited from parking on Excalibur Way, Montrose Way, January Place and Sherlock Court.
7. When the contractor temporarily closes a bike lane, in addition to MUTCD requirements and the traffic control plans the Contractor shall implement the following additional measures:
 - a. “No parking” signs shall not be placed within the bike lane.
 - b. An additional “bike lane closed ahead” and “share the road” notification signs shall be placed ahead of the identified signs within the traffic control plans.
8. Work along Genesee Avenue between Decoro Street and Nobel Drive (Night Work) shall not coincide with the work along Nobel Drive between Genesee Avenue and Towne Centre Drive (Day Work). A minimum stagger of 7-calendar days is required for a work transition from Night to Day or Day to Night in this area; in order to provide a temporary reprieve from construction noise for the adjacent residents.

Supplementary Special Provision 1-2

Contractor may elect to work outside of the established Normal Working Hours, each request will be analyzed by the Construction Management (CM) Team on a case by case basis with input from the community.