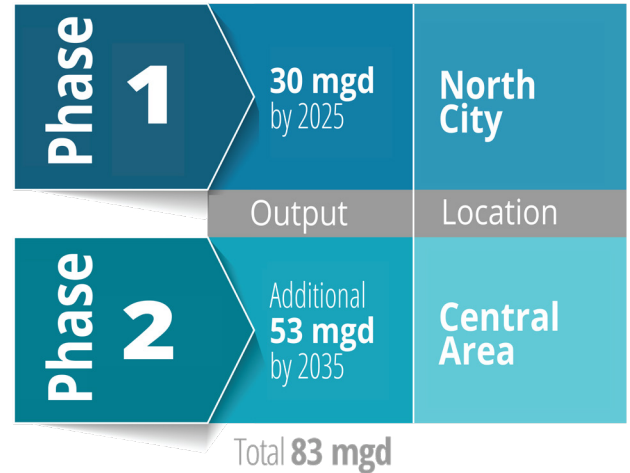


What is Pure Water San Diego?

Pure Water San Diego is the City of San Diego’s (City) program that will provide nearly half of San Diego’s water supply locally by 2035. The Pure Water Program will include a system of treatment facilities, pump stations and pipelines that will be constructed in multiple phases and will:

- Use proven technology to clean recycled water to produce safe, high-quality drinking water
- Provide a reliable, sustainable, water supply
- Offer a cost-effective investment for San Diego’s water needs



What does Phase 1 Include?

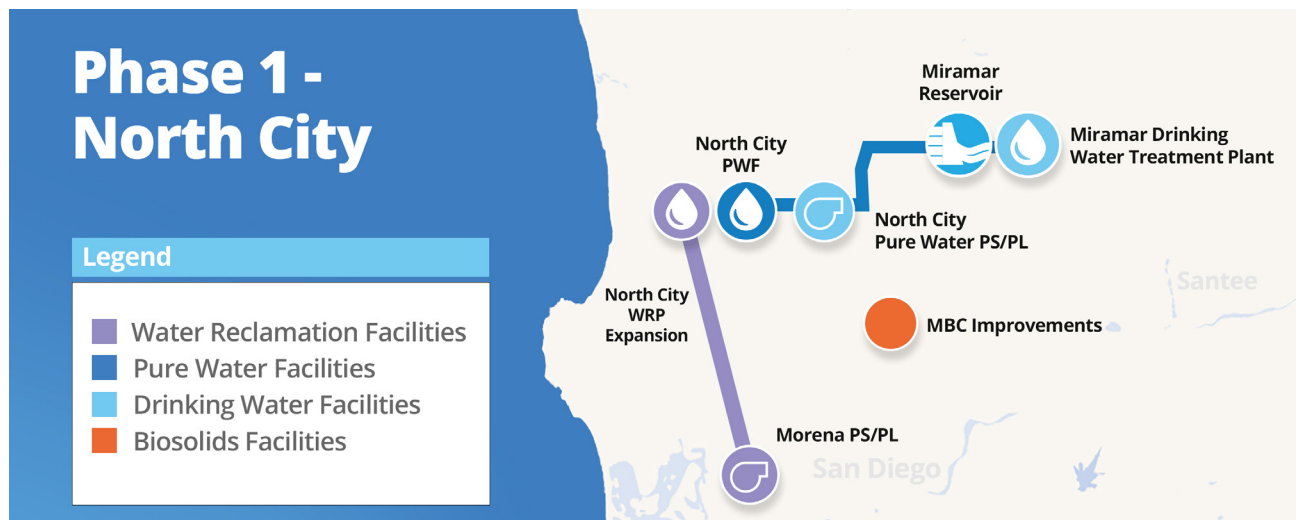
*mgd = million gallons per day

The Pure Water Program is the largest integrated infrastructure program the City of San Diego has ever undertaken. Phase 1 - North City is comprised of several projects that will deliver 30 million gallons per day (mgd) of purified water for San Diego. The purified water will be piped to the Miramar Reservoir for storage and then will be treated again at the Miramar Drinking Water Treatment Plant before it is distributed to the public.

The projects under construction as part of Phase 1 include the:

- Morena Pump Station
- Morena Pipelines Southern Alignment
- Morena Pipelines Middle Alignment
- Morena Pipelines Northern Alignment
- North City Water Reclamation Plant (NCWRP) Expansion
- NCWRP Flow Equalization Basin
- North City Pure Water Facility and Pump Station
- North City Pure Water Pipeline
- Metropolitan Biosolids Center Improvements
- Miramar Reservoir Pump Station Improvements

A detailed map of the project locations can be viewed at phase1.purewatersd.org.

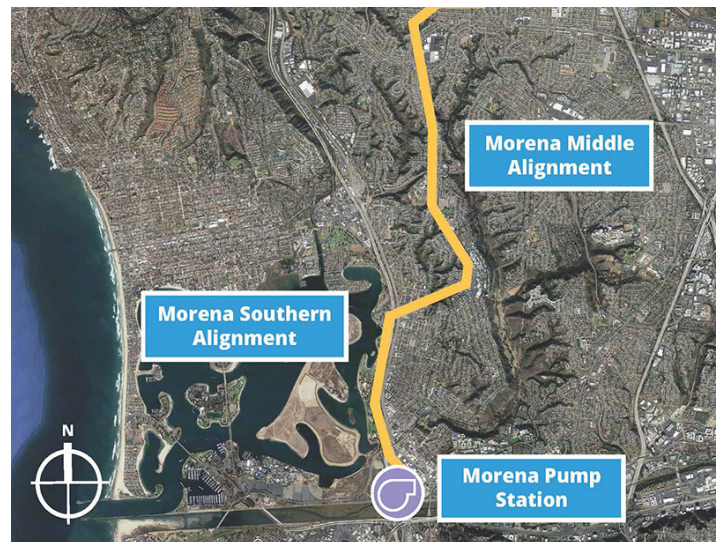


Phase 1 - North City Projects

Morena, Bay Park & Clairemont

Morena Pump Station

The Morena Pump Station will be constructed at the southwest corner of Sherman Street and Custer Street off Morena Boulevard, just north of Interstate 8 and east of Interstate 5. When completed, the pump station will divert 32 million gallons of per day (mgd) of wastewater to the North City facilities for purification. This project also includes ongoing work on Friars Road between Napa Street and Sea World Drive.



Morena Pipelines Southern Alignment

The Morena Pipelines Southern Alignment will begin at the Morena Pump Station at Sherman Street and Custer Street and continue north on Morena Boulevard, Milton Street, Chicago Street and Denver Street to Clairemont Drive. This project will include portions of two 10.5-mile pipelines: one 48-inch wastewater pipeline, which will carry wastewater north to the North City facilities for purification, and one 30-inch brine line that will carry the biproduct from water purification south to the Point Loma Wastewater Treatment Plant.

Morena Pipelines Middle Alignment

The Morena Pipelines Middle Alignment will connect the Southern Alignment in Bay Park and the Northern Alignment and Tunnels in University City. The Middle Alignment begins on Clairemont Drive at Iroquois Avenue and continues north to Genesee Avenue between Appleton Street and State Route 52. As it is connected to the Southern Alignment, the Middle Alignment will continue to carry wastewater north to the North City facilities for purification and the biproduct from water purification south to the Point Loma Wastewater Treatment Plant.

Learn More About Projects in Morena, Bay Park and Clairemont:



Local **residents**, community **groups**, environmental **organizations** and local **businesses** support the **Pure Water** Program.

Do you support Pure Water? Like us, follow us:



Want to Know More?

Visit PureWaterSD.org to watch the Virtual Tour or to request a presentation for your organization, visit the [Informational Materials](#) page.