

Pure Water San Diego Program

Pure Water Facility Tour

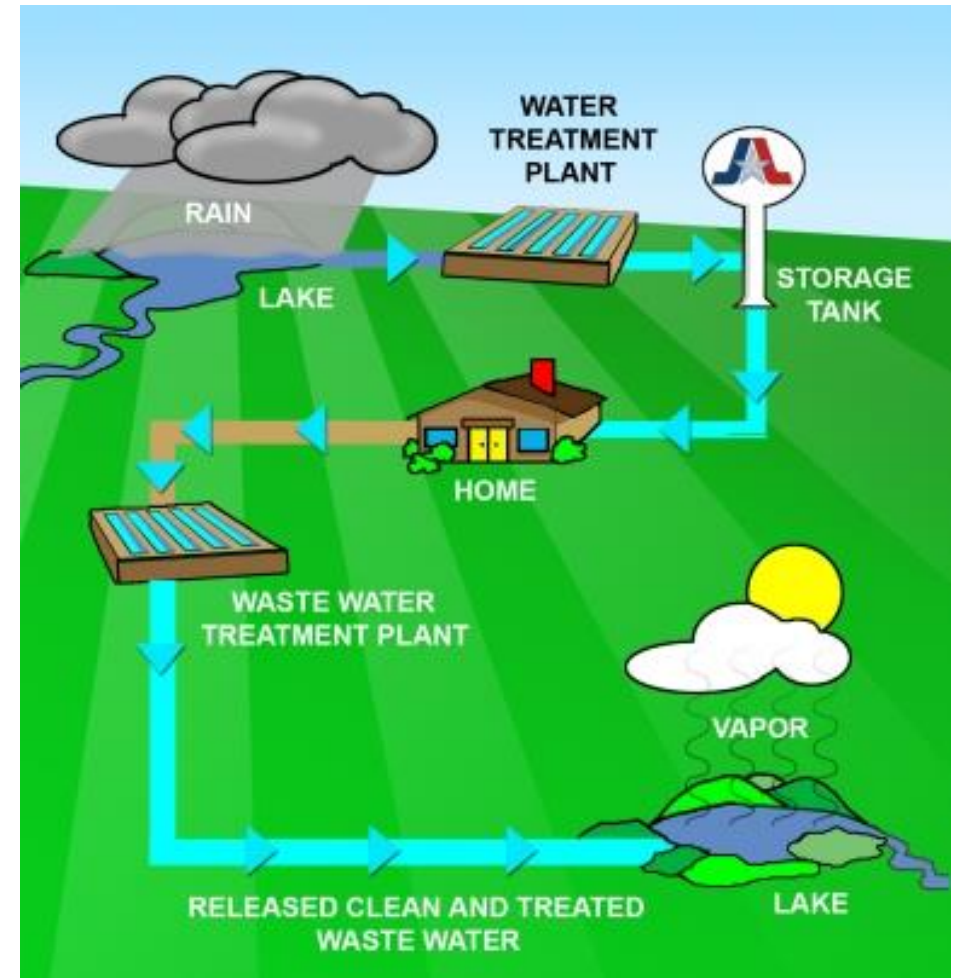


Today You Will Learn...



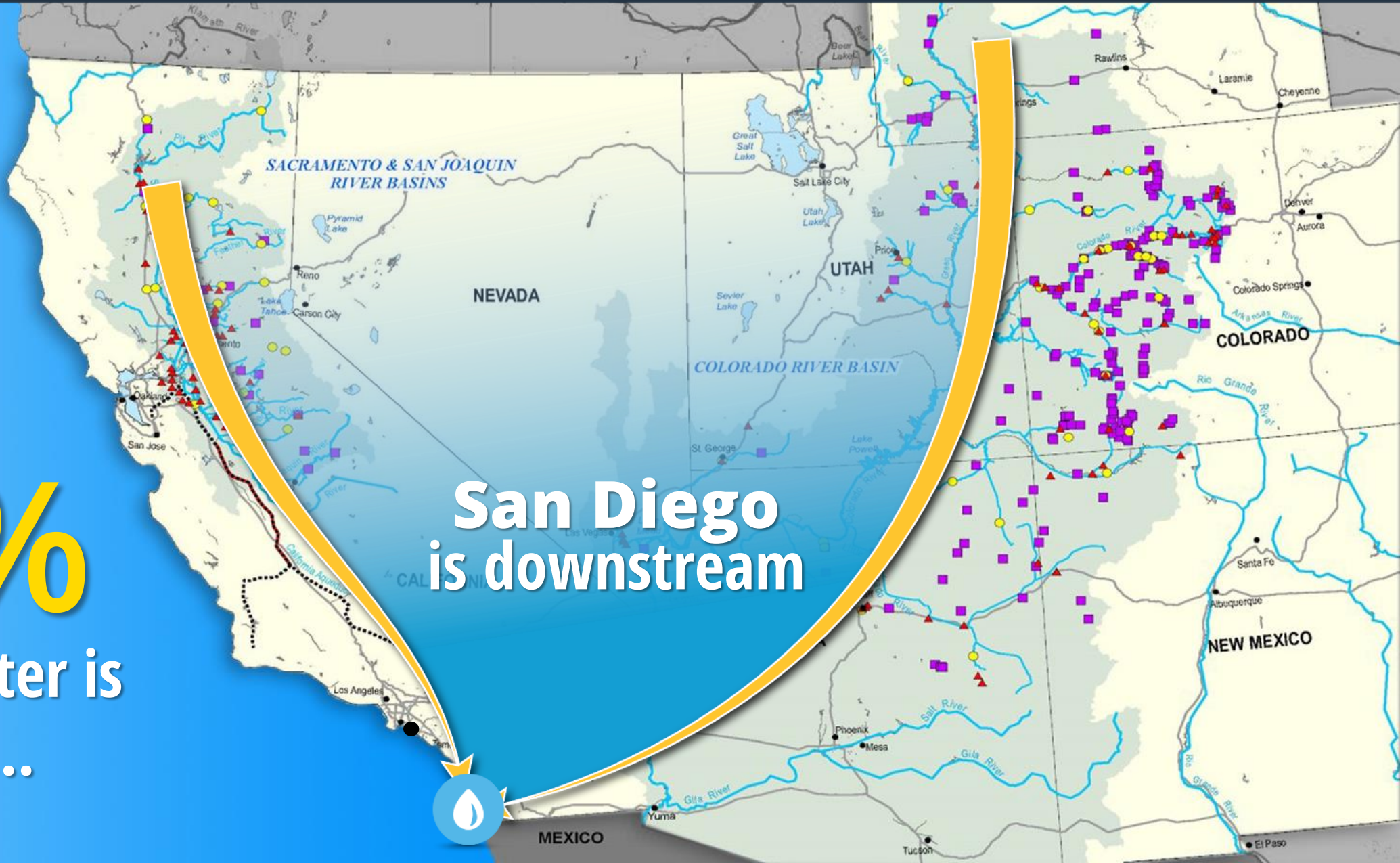
- **Where** San Diego's water comes from
- **Why** San Diego needs water
- **A new way** to get clean drinking water

- How does water get to your home?
- Where does water go after it leaves your home?
- Where does San Diego's water come from?



85%
of our water is
imported...

**San Diego
is downstream**



- There is **no new water**
- The water we use and drink now is the **same water the dinosaurs drank!**
- We clean **water over and over again**
- Besides drinking, what do you use water for?

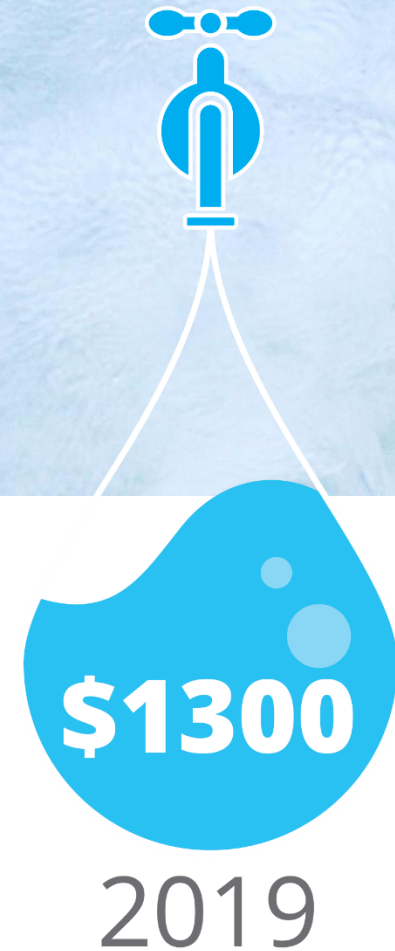
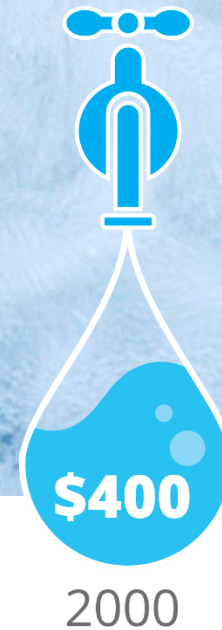




San Diego's Water Supply Challenges



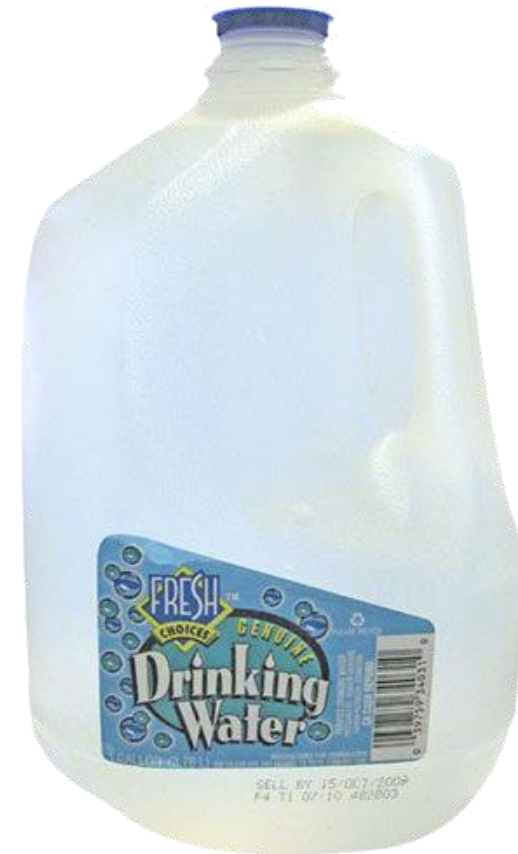
Imported water cost per acre-foot



- Not enough local water
- Families are growing
- Fish share the water
- Earthquakes
- Water costs a lot
- Drought

- Altogether, San Diegans use about **180 million gallons of water** every day.
- Here is what a **gallon** looks like:

**How many gallons of water does
1 San Diegan use in a day?**





**65 GALLONS
PER DAY!!!**

- **Conservation**

How do you save water?

- **Desalination**

- **Groundwater**

- **Recycled Water**

- **Pure Water Program**

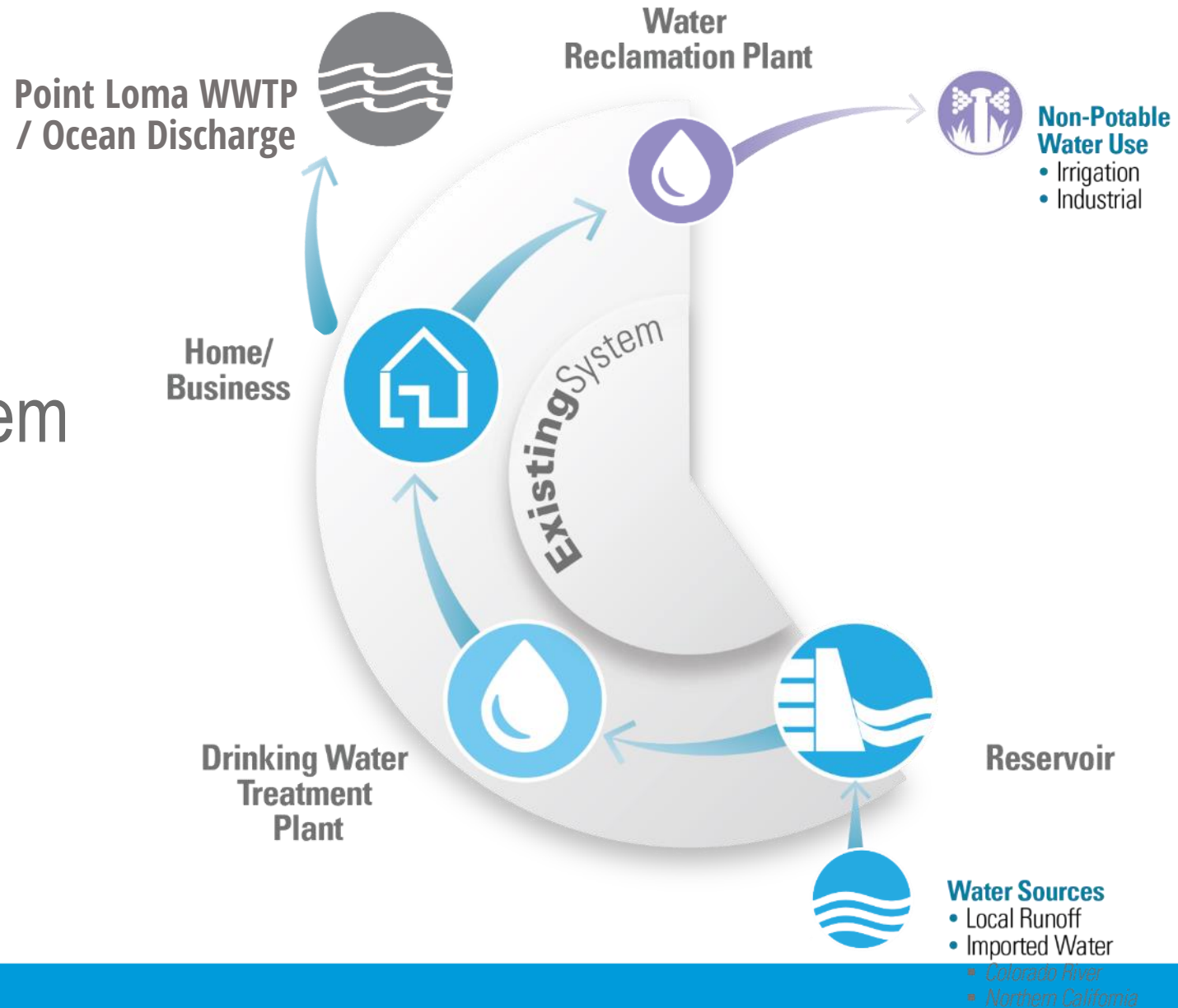
SAN DIEGANS
WASTE
NO WATER
ALL WAYS. ALWAYS.



SD San Diego's Water Supply System

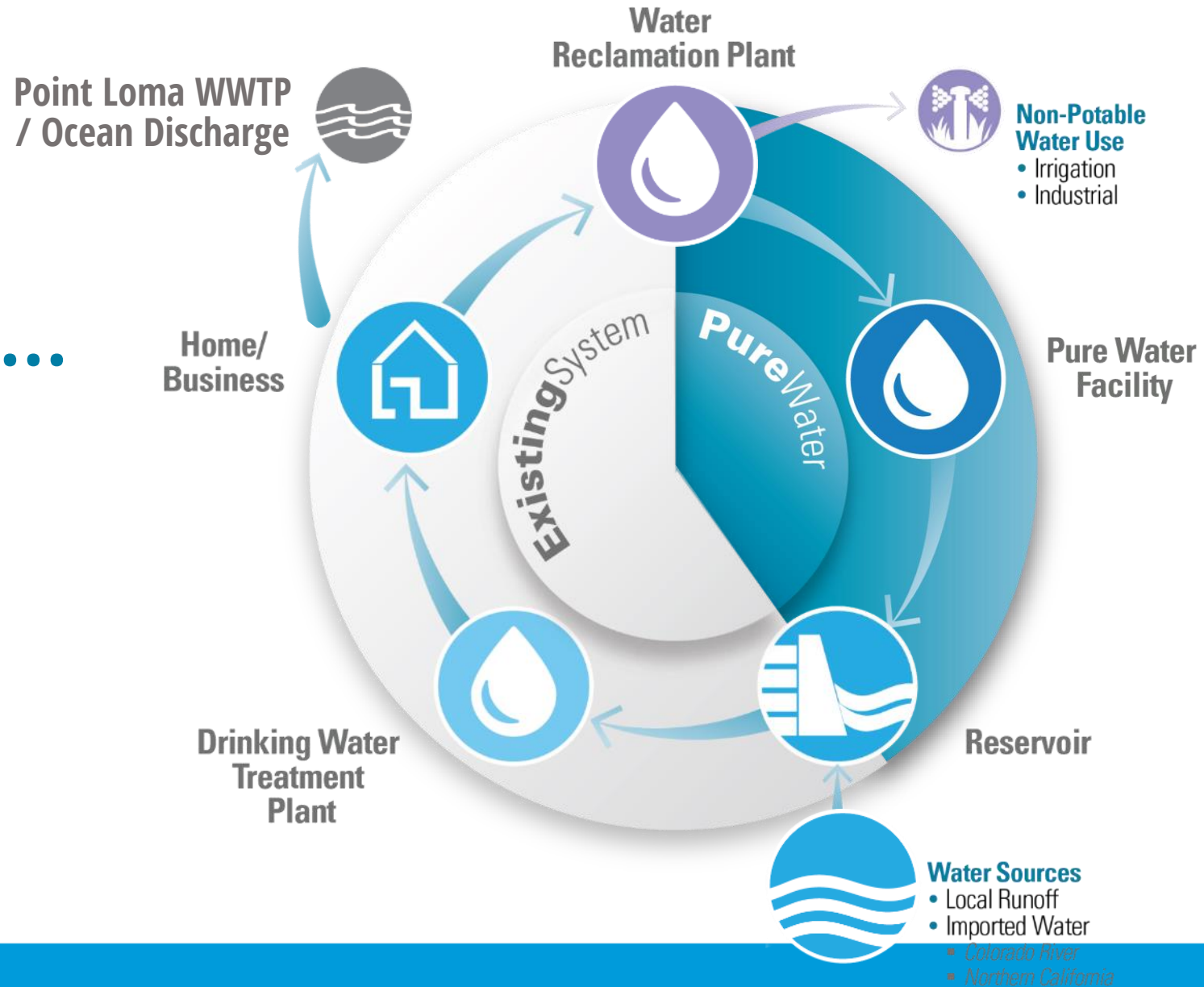
Existing System...

Primarily a Single-Use System



San Diego's Water Supply System

Pure Water...
Completes Our
Water Cycle



Pure Water Runs a Successful Demonstration Facility

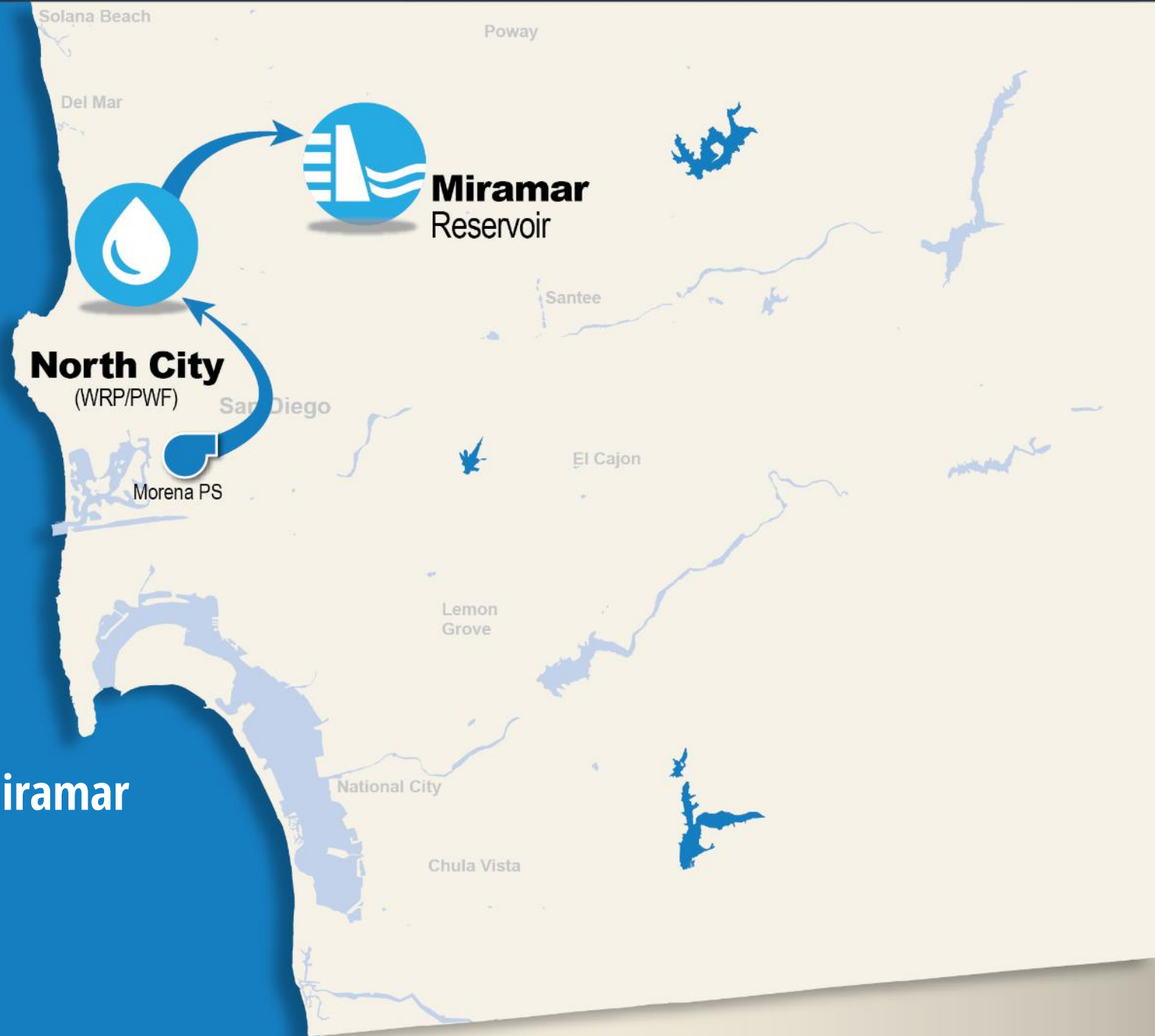


- 50,000 lab tests: **Safe to add to drinking water supply**
- Water quality: **Very clean**

Pure Water
will produce
1/3
of your water
locally

Phase 1

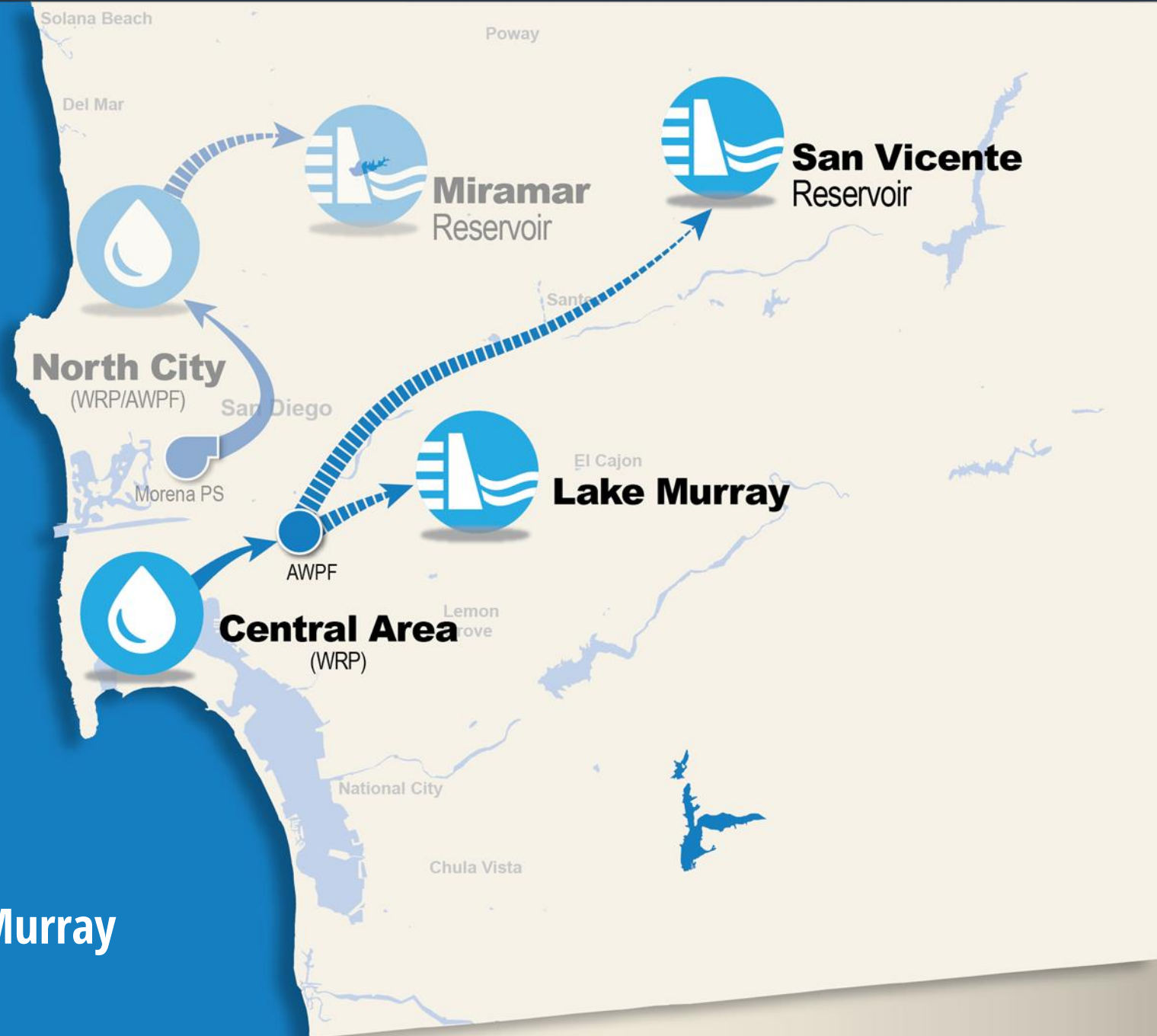
- 30 mgd
- North City PWF to Miramar



Pure Water
will produce
1/3
of your water
locally

Phase 2

- 2035 Completion
- 53 mgd
- Central Area PWF to San Vicente or Lake Murray



SD What Can I Do?



www.purewatersd.org



Pure Water San Diego



PureWaterSD



@PureWaterSD



PureWaterSD

Join our **mailing list** and **sign a support card**