

# The San Diego River Park Foundation



*Connect.  
Create.  
Conserve.*

Rob Hutsel  
Executive Director and Co-Founder

*Founded in 2001 to create a better future for our river and community*

# Board of Directors

Jo Ann Anderson

Michael Beck

Beth Bruton

Bill Dahnke

Janie DeCelles

Philip Pryde

Charley Berwanger

Jim Dawe

Perry Dealy

Alan Grant

Bob Kain

Cary Lowe

Jack McGrory

Barbara Palan

Jim Peugh

Lea Rudee

James Ryan

Mike Schneider

Tom Sudberry

Anthony Wagner



*Connect. Create. Conserve.*





*Connect. Create. Conserve.*



Written June 9, 1769 by Father Juan Crespi  
to Father Francisco Paulo

“We found there a good-sized river which empties into the sea through an estuary which the ships used as a watering-station. This river has a very large, broad plain on banks, which seems to be of very good soil, with many willows, some poplars, and some alders, although so far it has not been possible to examine it properly.

**If the river is permanent it may prove in time to be the best of those discovered in all of California.** On the banks of the river, which are thickly covered with willows, there are many Castilian rose bushes with very fragrant roses, which I have held in my hand and smelled. All the plain is dotted over with wild grapevines, which look as if they had been planted, and at present, their many branches are in bloom.”





# Broad Floodplain reduced to accommodate growth

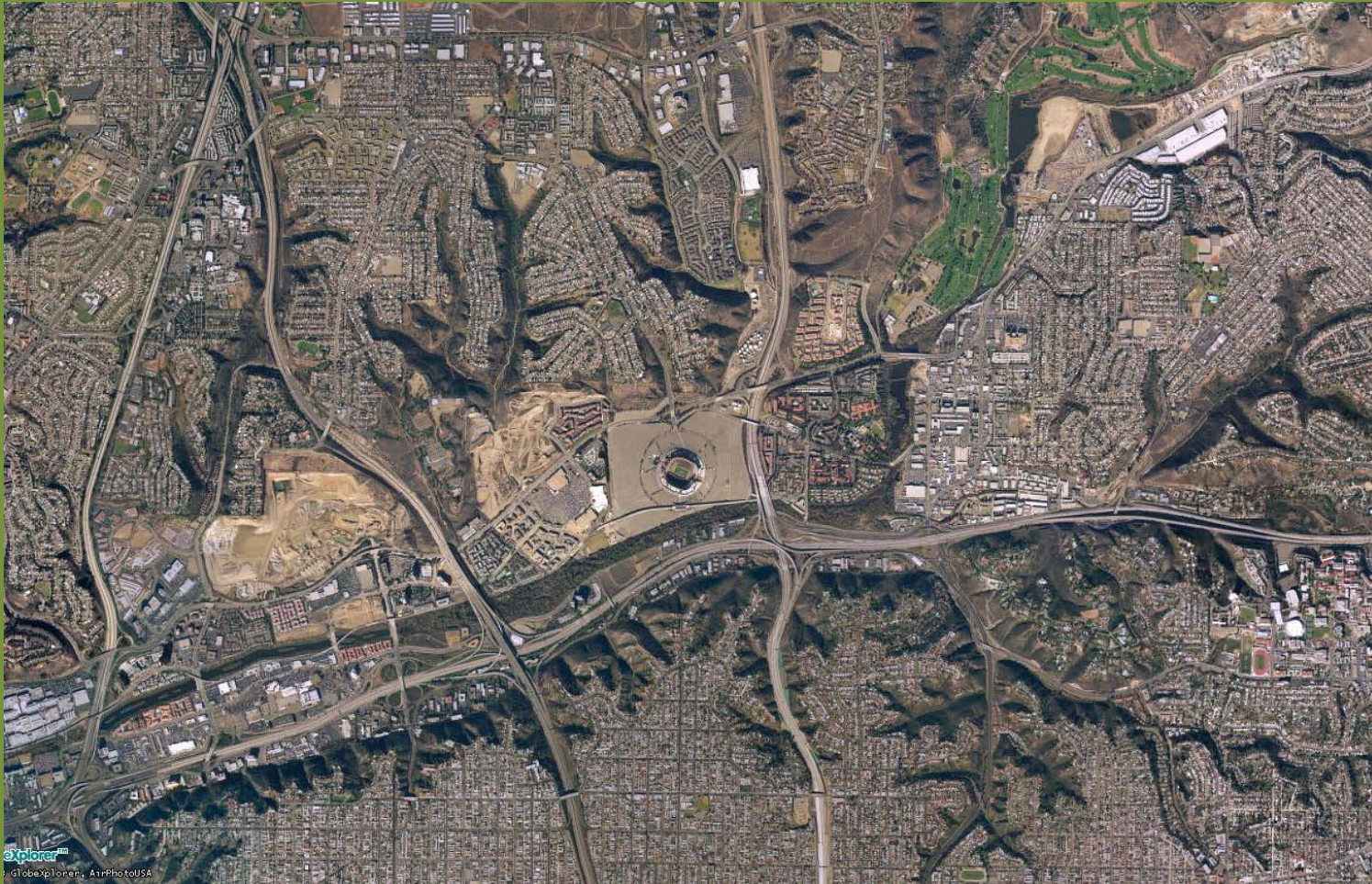


*Connect. Create. Conserve.*









*Connect. Create. Conserve.*





# Current Flooding Design



*Connect. Create. Conserve.*



# Discover the San Diego River and its watershed



Mission Valley Inset



Map Key

State Parks
National Forest
Reservations
Preserves
MCAS Member
Local Parks

Things to Do Places to Go	CYCLING	BIRDING	BOATING	CAMPING	DOGS OFF LEASH	FISHING	HIKING	HORSES	INTERPRETIVE GARDEN	PICKNICKING	SCENIC VISTA	VISITOR CENTER
1 INAJA MEMORIAL PICNIC GROUND												
2 LAKE CUYAMACA												
3 EAGLE PEAK PRESERVE												
4 CEDAR CREEK FALLS TRAILHEAD												
5 EL MONTE COUNTY PARK												
6 MAST PARK												
7 SANTEE LAKES RECREATION PRESERVE												
8 MISSION TRAILS REGIONAL PARK												
9 MISSION VALLEY PRESERVE												
10 SOUTHERN WILDLIFE PRESERVE												
10a FAMOSA SLOUGH												
10b DOG BEACH												



The San Diego River Park Foundation  
PO Box 80126  
San Diego, CA 92138-0126  
619-297-7380  
info@sandiegoriver.org

www.sandiegoriver.org



# Upper San Diego River Gorge



“Arguably, there is more biologically diversity here, than any where else in the country”

Tom Oberbauer  
County of San Diego, MSCP Chief  
(former)









# Bobcat



Bushnell

05-14-2013 06:46:55

*Connect. Create. Conserve.*







Bushnell

09-15-2015 08:45:37

*Connect. Create. Conserve.*



# Deer Track by the Stadium



*Connect. Create. Conserve.*







*Connect. Create. Conserve.*



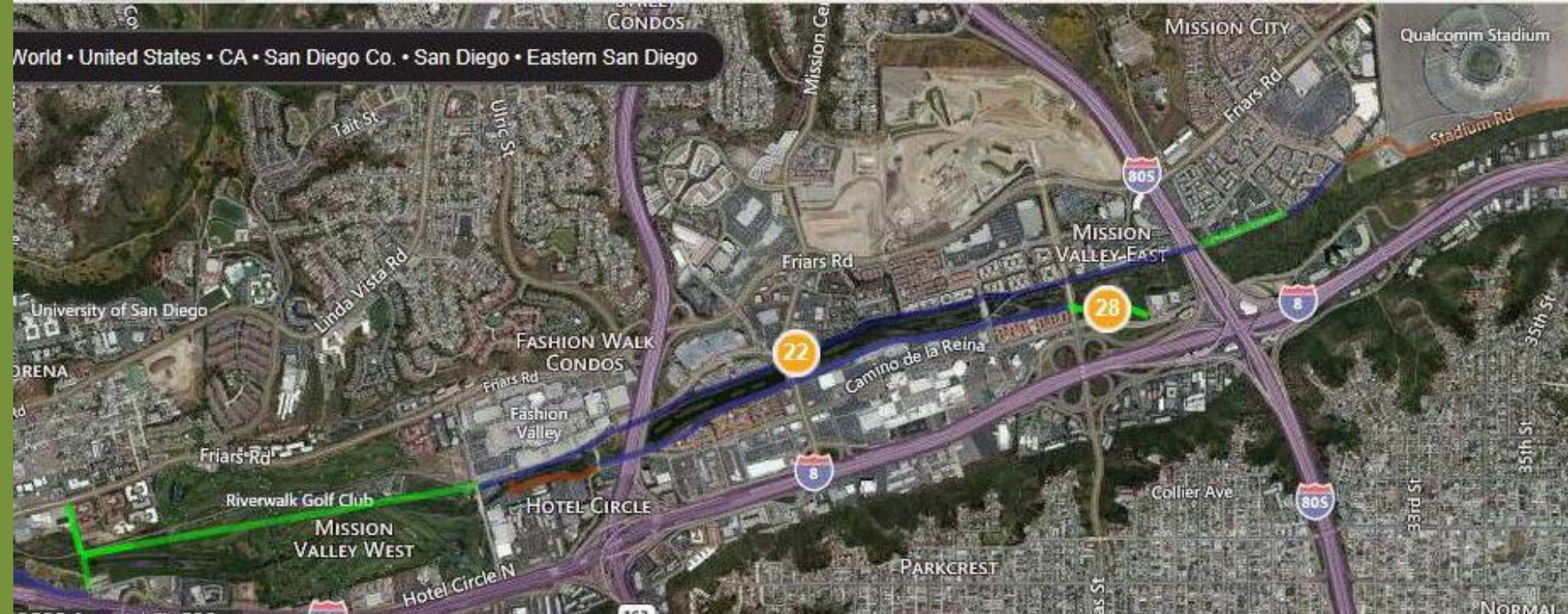




*Connect. Create. Conserve.*





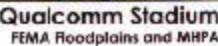


- Former UT Site - permitted
- Town and Country Resort – in permitting
- Riverwalk Golf Course – if use changes
- Stadium Site

*Connect. Create. Conserve.*

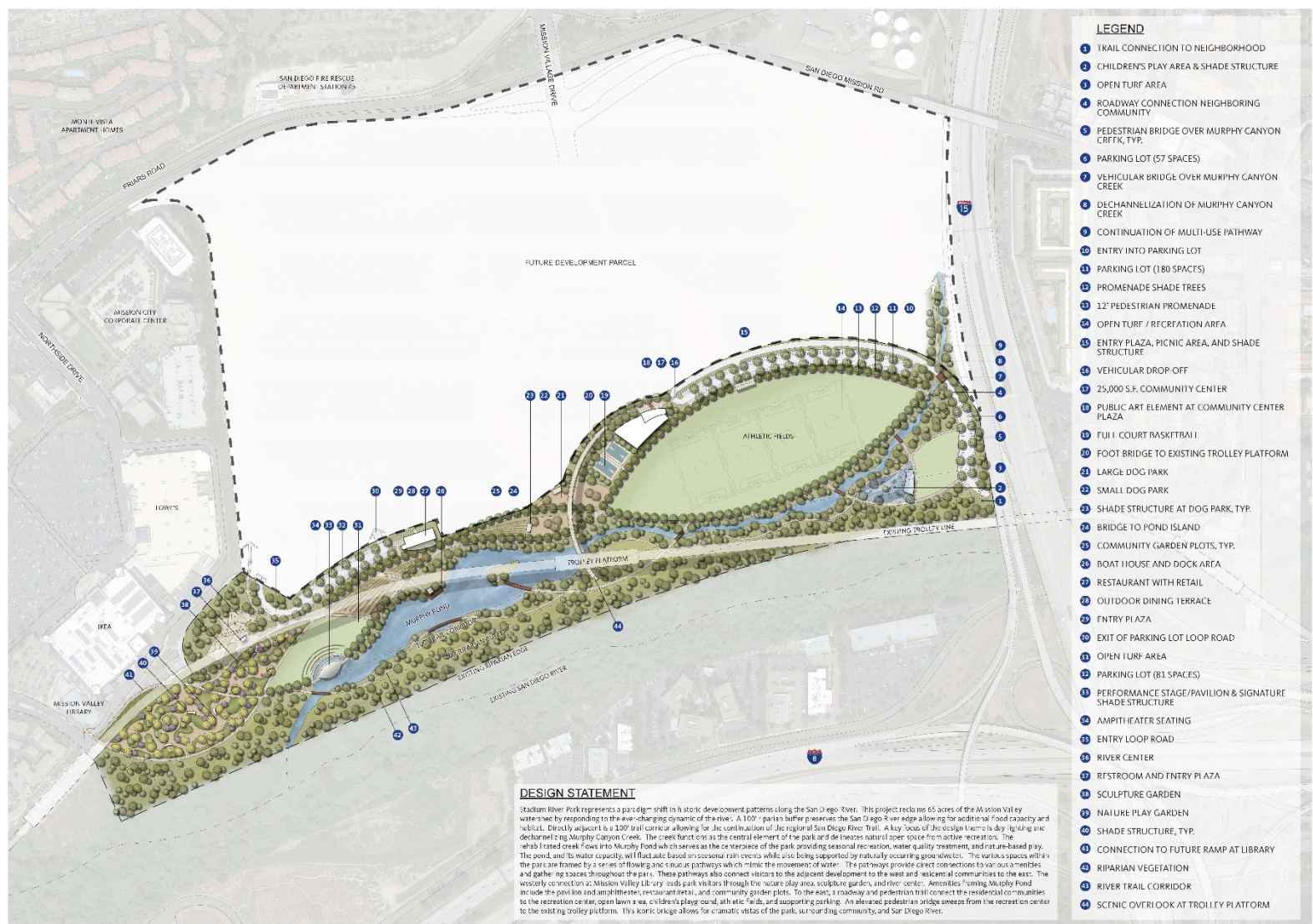






1-867-43





## STADIUM RIVER PARK

## SCHEMATIC MASTER PLAN

San Diego, CA | March 21, 2016

Scale: 1" = 100'-0"



STUDIO CITY DESIGN GROUP, INC.  
www.studiocitydesign.com



Connect. Create. Conserve.







*Connect. Create. Conserve.*





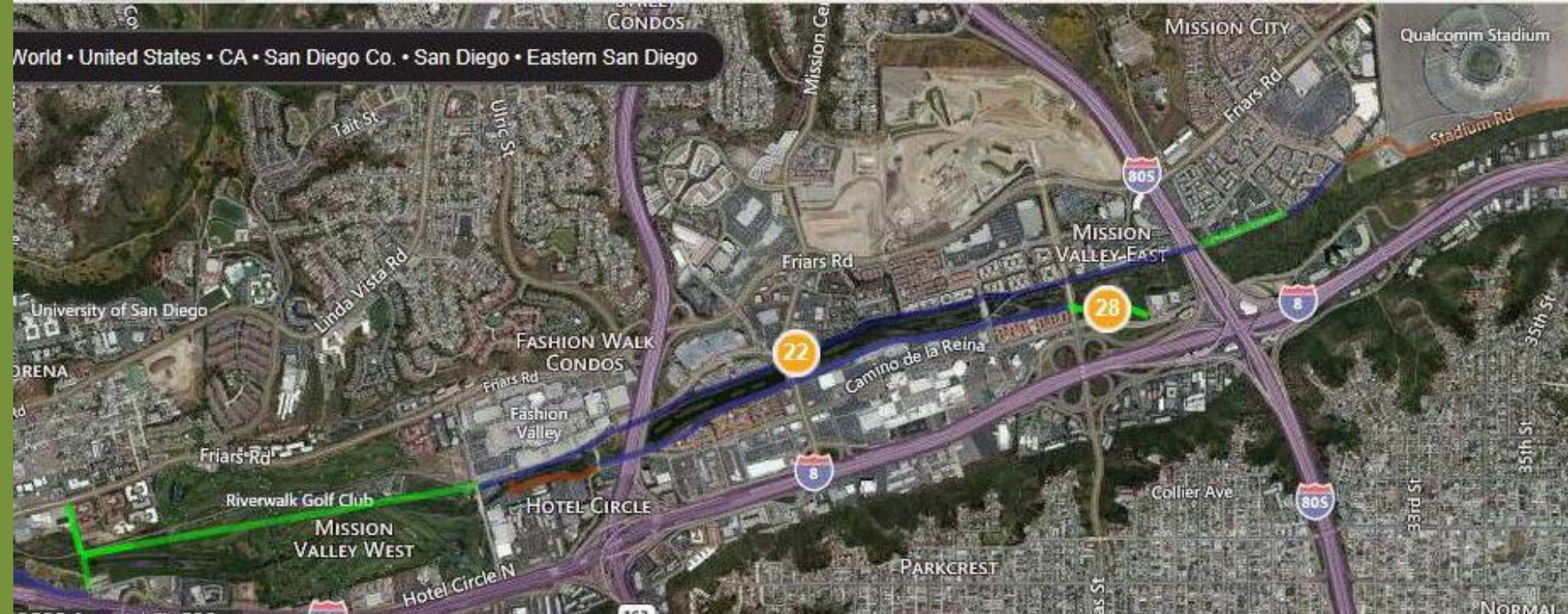
# The Discovery Center at Grant Park



*Connect. Create. Conserve.*







- Former UT Site - permitted
- Town and Country Resort – in permitting
- Riverwalk Golf Course – if use changes
- Stadium Site

*Connect. Create. Conserve.*





# Expanded Green Infrastructure

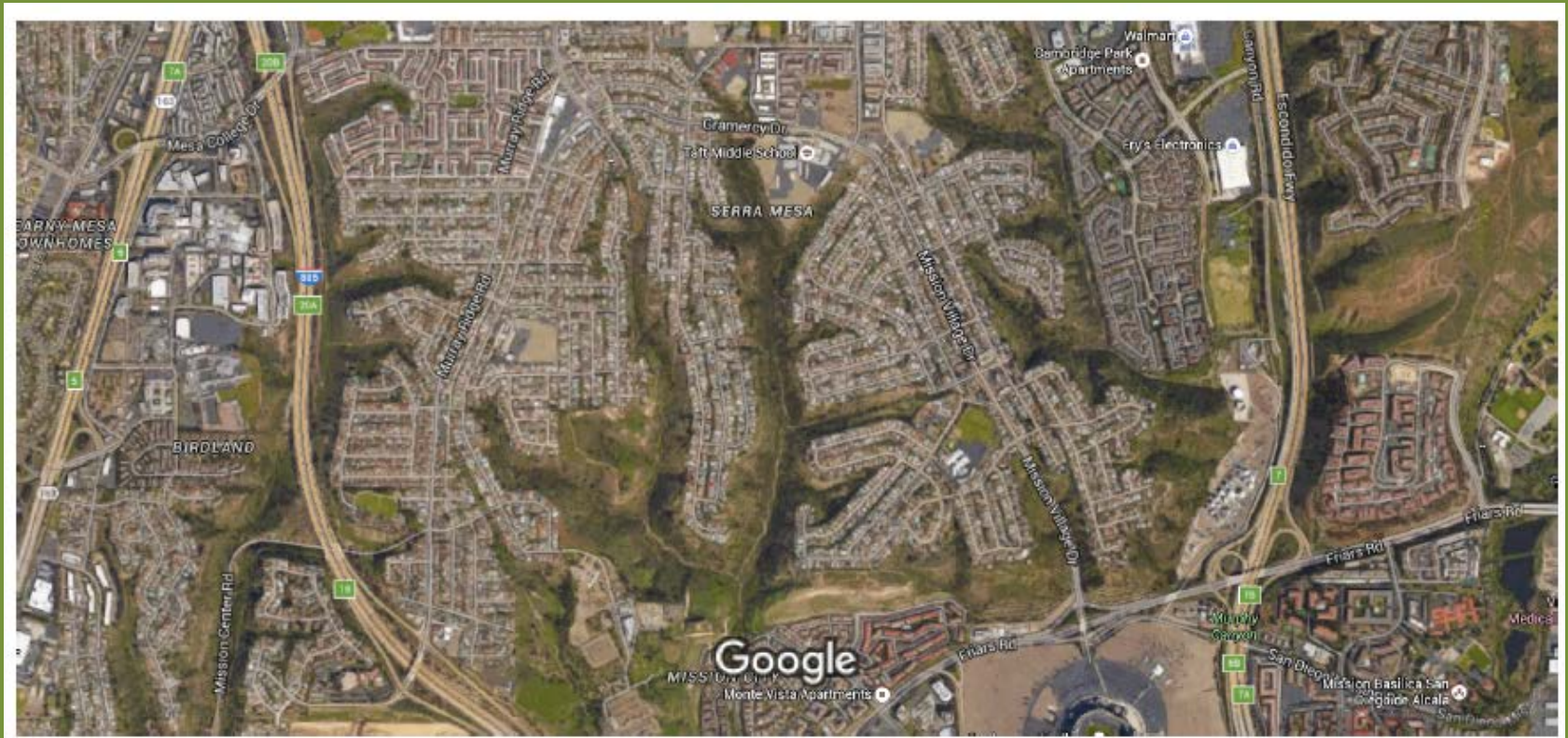


*Connect. Create. Conserve.*





# Landscape Connections to Canyons



*Connect. Create. Conserve.*





Cottonwood trees reach into groundwater for life

They are pollinated by butterflies

The butterflies live off of flowers

The flowers depend upon insects....

***Connect. Create. Conserve.***





- River System is lowest water quality in County based upon IBI



*Connect. Create. Conserve.*







*Connect. Create. Conserve.*







*Connect.  
Create.  
Conserve.*

[www.sandiegoriver.org](http://www.sandiegoriver.org)  
619-297-7380

