

MICROFILMED

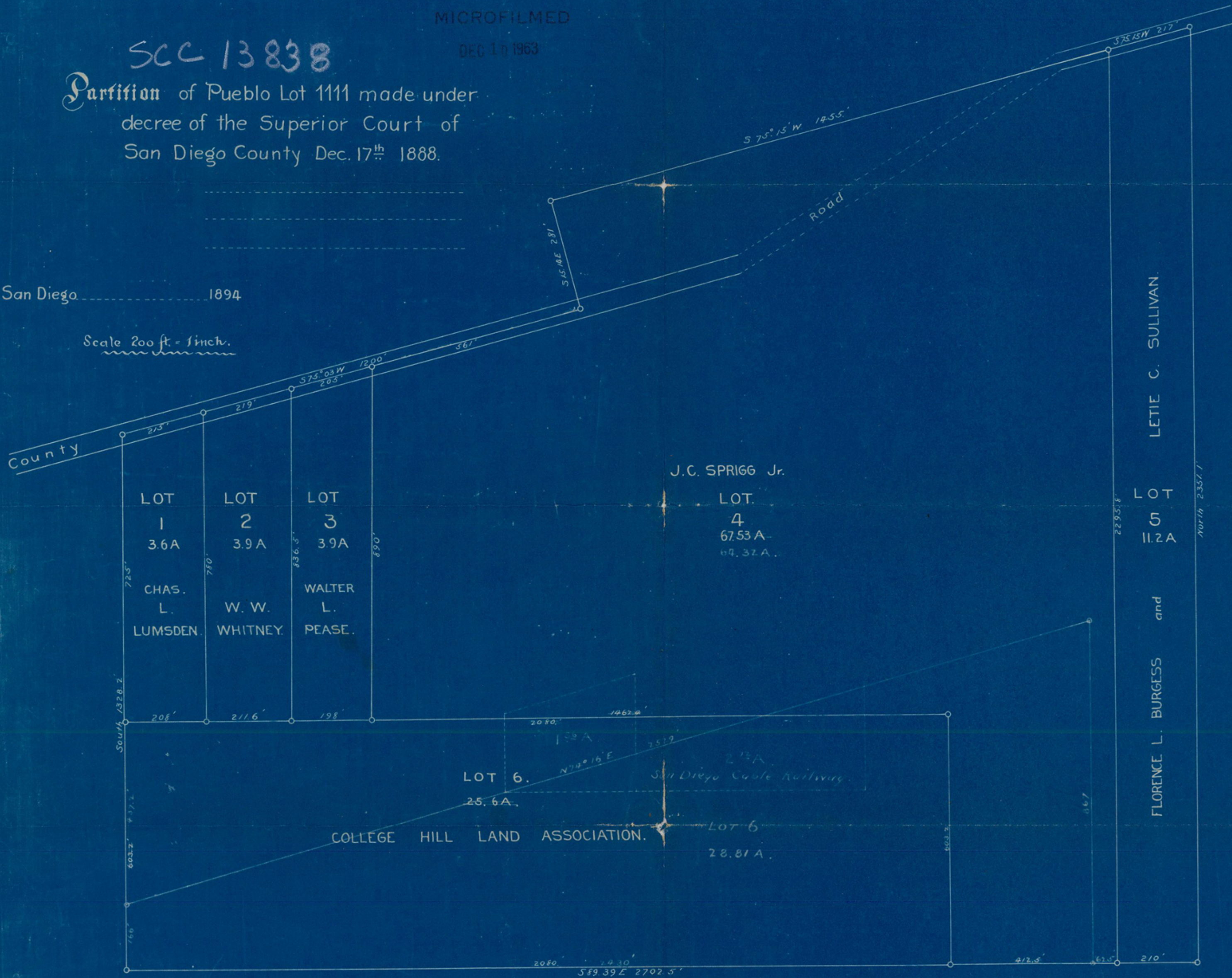
DEC 10 1963

SCC 13838

Partition of Pueblo Lot 1111 made under decree of the Superior Court of San Diego County Dec. 17th 1888.

San Diego 1894

Scale 200 ft. = 1 inch.



LOT 1
3.6A
CHAS. L. LUMSDEN.

LOT 2
3.9A
W. W. WHITNEY.

LOT 3
3.9A
WALTER L. PEASE.

J.C. SPRIGG Jr.
LOT 4
67.53A
69.32A

LETIE C. SULLIVAN
LOT 5
11.2A
and
FLORENCE L. BURGESS

LOT 6
25.6A
COLLEGE HILL LAND ASSOCIATION.

LOT 6
28.81A

San Diego Cable Railway

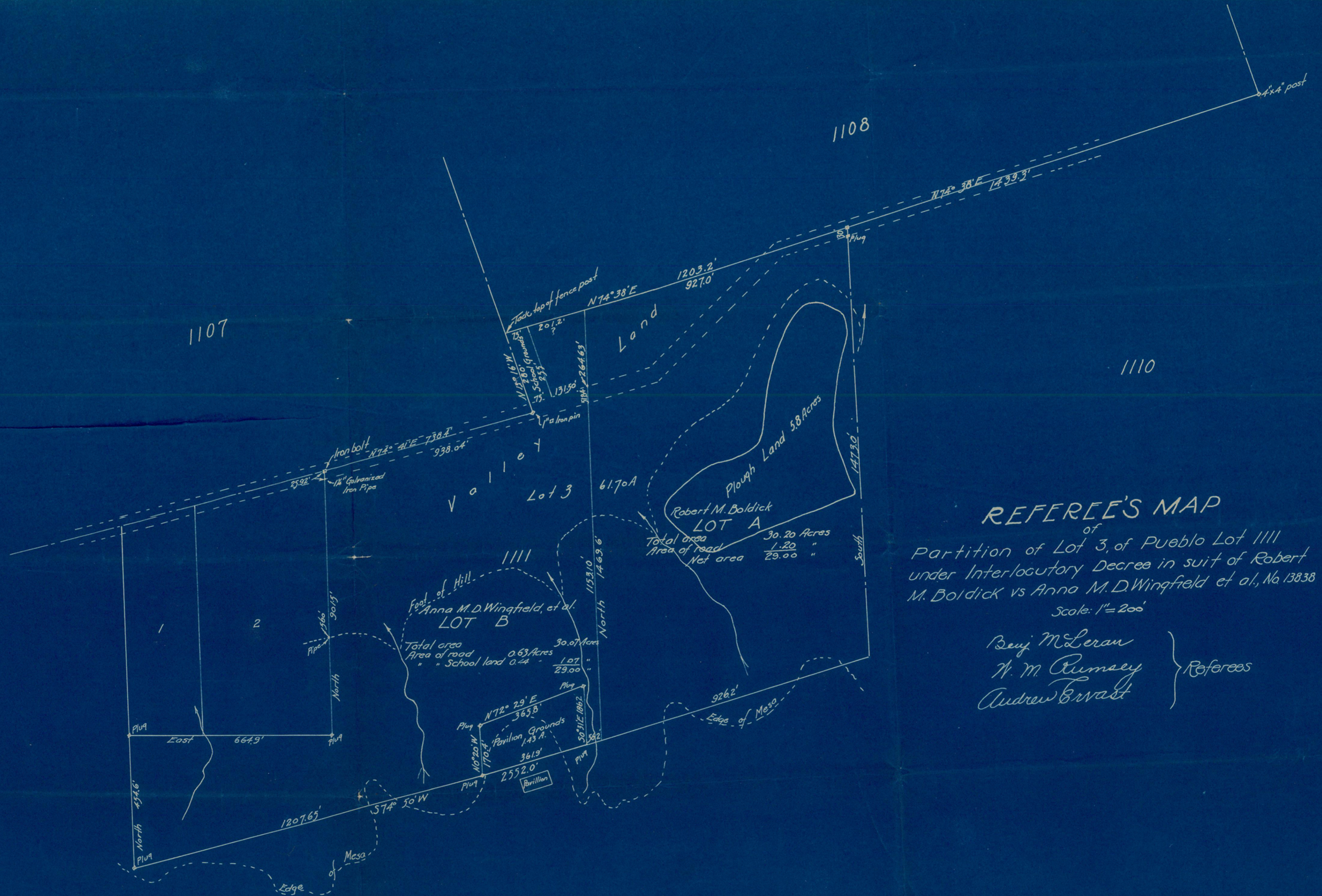
Road

County

South 1328.2

North 2357.1

589.39 E 2702.5'



REFEREE'S MAP
of
Partition of Lot 3, of Pueblo Lot 1111
under Interlocutory Decree in suit of Robert
M. Boldick vs Anna M.D. Wingfield et al., No. 13838
Scale: 1" = 200'

Benj McLeran
W. M. Rumsey
Andrew Ervast } Referees