

SCC 17586

MICROFILMED  
DEC 10 1963

# MAP

## OF THE PARTITION OF THE W. 1/2 OF PUEBLO LOT 1215 OF PUEBLO LANDS OF SAN DIEGO

According to James Pascoe's Map thereof  
More particularly described in the interlocutory decree of partition in the case entitled

Harry L. Titus and James A. Gibson, Plaintiffs.

vs.

Blanche E. Gay et al, Defendants.

Department No 1 Superior Court of San Diego County, State of California

No 17586 January 11<sup>th</sup>, 1913

Sole Referee. Lew. B. Harris.

### AREAS

Total Area of Pueblo Lot 1215	66.73 Acres
W 1/2 of Pueblo Lot 1215	33.36
David Hitchcock	12.51
Harry L. Titus	11.7
James A. Gibson	11.7
Blanche E. Gay	11.7
<b>Total</b>	<b>33.36 Acres</b>

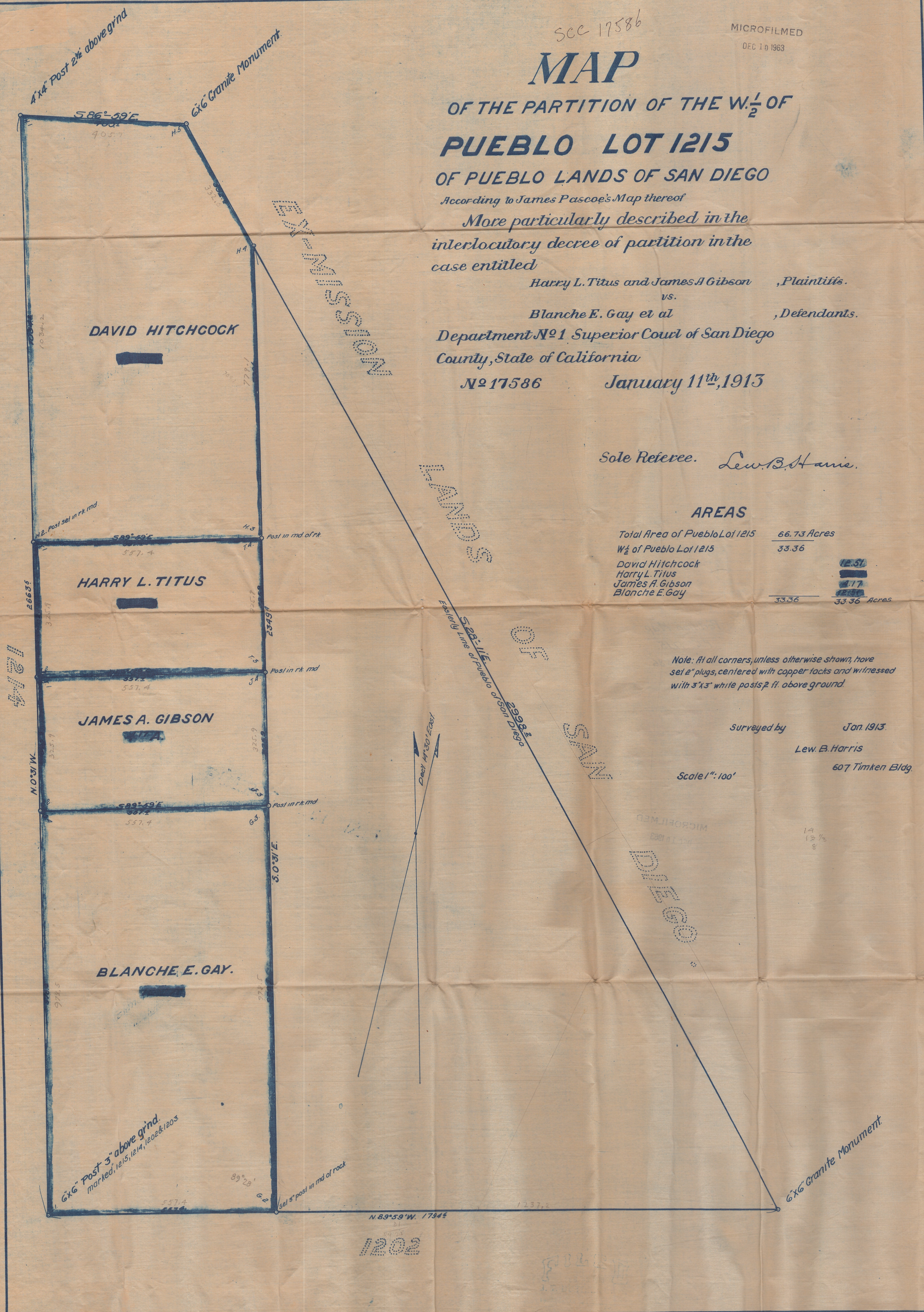
Note: At all corners, unless otherwise shown, have set 2" plugs, centered with copper tacks and witnessed with 3"x3" white posts 2 ft. above ground.

Surveyed by Jan. 1913.

Lew. B. Harris

607 Timken Bldg.

Scale 1" = 100'



1202