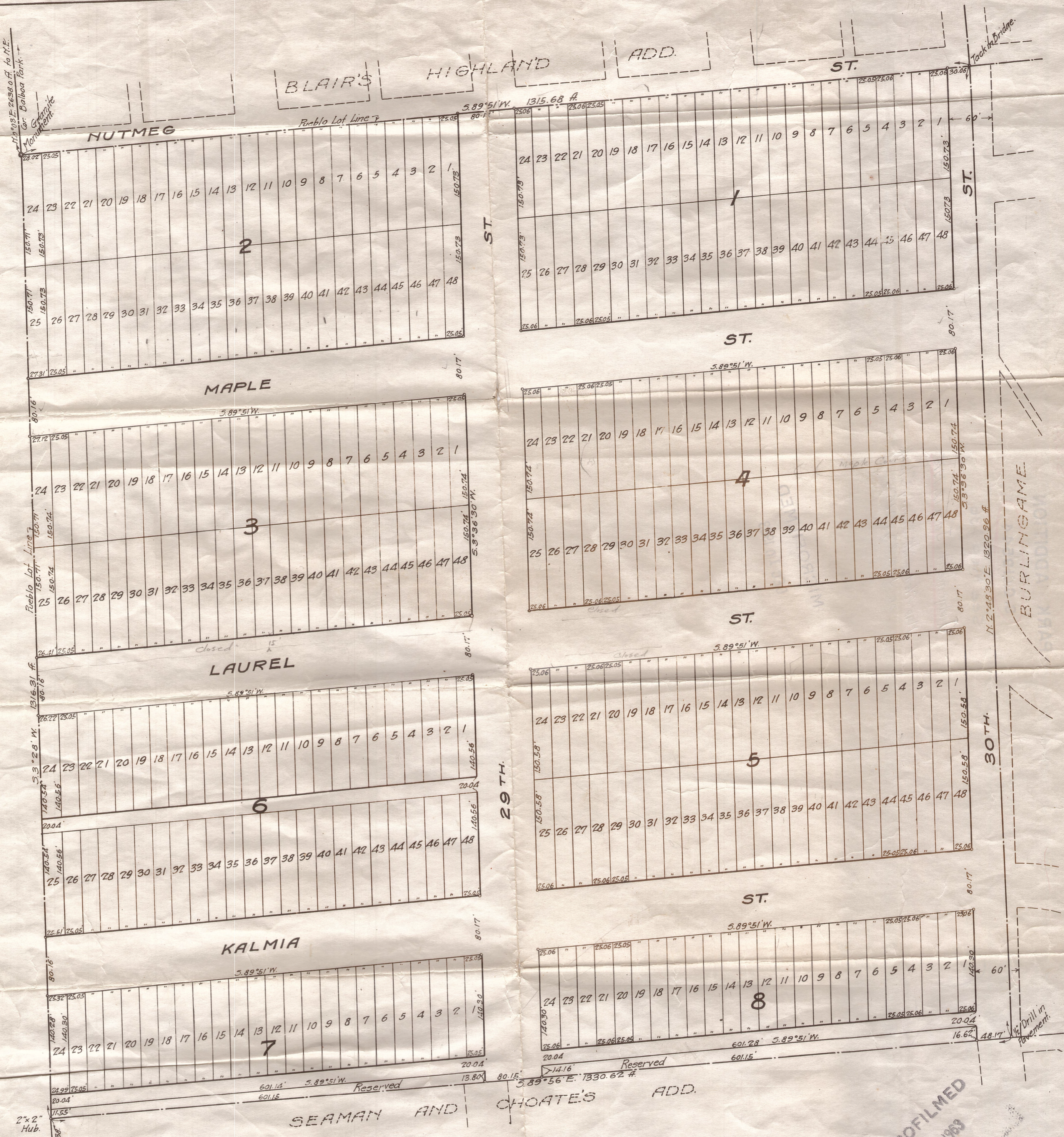


BALBOA PARK



# PARK ADDITION

Being a subdivision of the N.W. 1/4 of Pueblo Lot 1138 of the Pueblo Lands of the City of San Diego, California, according to the map thereof made by James Pascoe in the year A.D. 1870, and more particularly described as follows: Commencing at the northwest corner of said Pueblo Lot 1138, also the southwest corner of 1128, said corner being marked by a granite monument, said northwest corner of Pueblo Lot 1138 bears 5.0°03'W. 2638 feet from the northeast corner of Balboa Park, said northeast corner of Balboa Park being common to Pueblo Lots 1126, 1127 and 1128; thence running from said northwest corner of Pueblo Lot 1138, 5.3°28'W. along the west line of said Pueblo Lot 1138 and the east line of Balboa Park, a distance of 1316.31 feet to the southwest corner of the north west quarter of said Pueblo Lots 1138; thence 5.89°56'E along the south line of the said N.W. 1/4 of said Pueblo Lot 1138, a distance of 1330.62 feet to the southeast corner of the said N.W. 1/4 of said Pueblo Lot 1138, said point being also the southwest corner of Burlingame; thence N. 2°48'30"E along the east line of said N.W. 1/4 of said Pueblo Lot 1138 and the west line of said Burlingame, a distance of 1320.96 feet to the northeast corner of said N.W. 1/4 of said Pueblo Lot 1138, said corner being also the southeast corner of Blair's Highland Addition; thence 5.89°51'W. along the north line of said Pueblo Lot 1138 and the south line of said Blair's Highland Addition, a distance of 1315.68 feet to the point or place of beginning.

Suit on equity Baker's et al.  
 Complaint filed June 3, 1913  
 Map filed Jan 25, 1915, County Clerk  
 V.S.C.G. 19544, Judgement - July 12, 1915.

MICROFILMED  
 DEC 10 1969