

37710
Union Trust Co.
Beach

MICROFILMED
DEC 10 1963

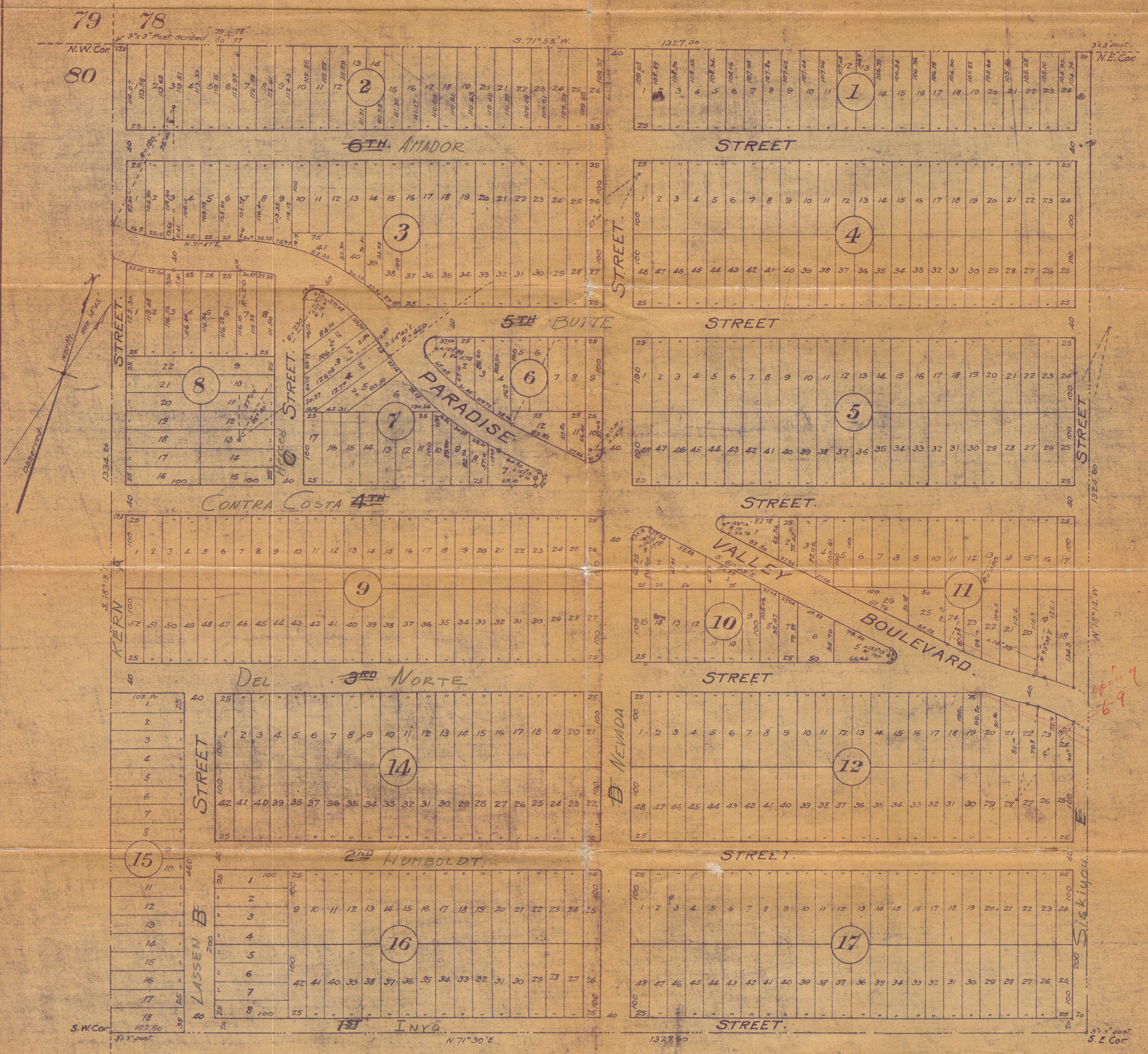
See 37710

MAP OF PARADISE VALLEY HEIGHTS.

San Diego County, California.

SCALE 100 FEET TO THE INCH.

Being a Subdivision of the Northwest Quarter of
Quarter Section Seventy-seven (77) of Rancho de la
Nacion, in the County of San Diego, State of California,
according to Map No 166 on file in the office of the
County Recorder of said San Diego County.



SURVEYED APRIL 1923.
BY *Will S. King*
Licensed Surveyor.

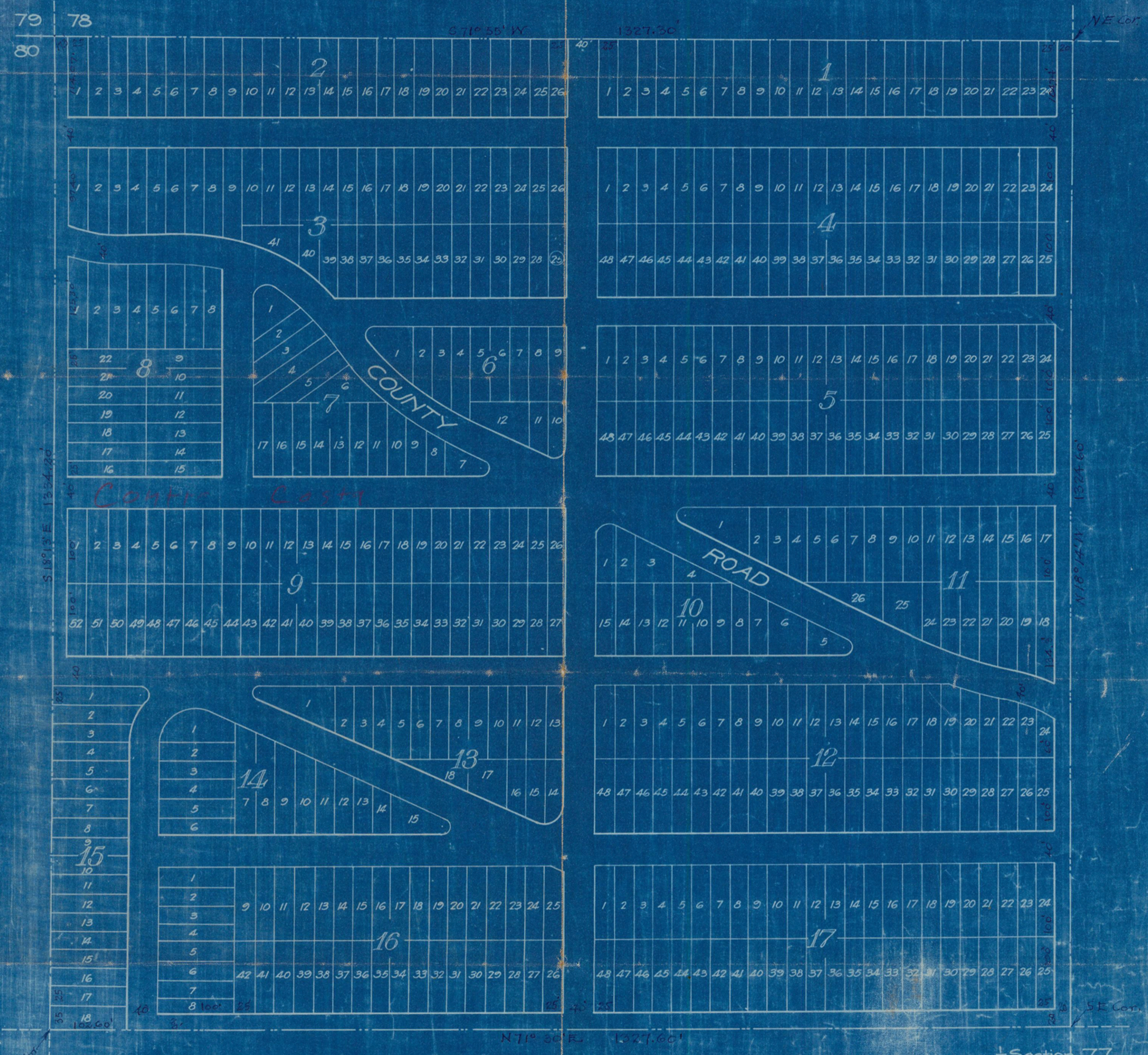
Filed in the office of the County Clerk, San Diego County,
California, this 15th day of June 1923
By *J. B. Du Puy* County Clerk.
By *J. L. C. Bailey* Deputy.

PLAT

SHOWING A SUBDIVISION OF THE N.W. 1/4 OF 1/4 SECTION 77
NATIONAL RANCH, SAN DIEGO COUNTY CALIFORNIA.

SCALE: 100 feet to the inch.

By Will S. King, C.E.



Cont'd. Cost