

Commissioners

COMMISSIONERS'

MICROFILMED

MAP

See 6481

DEC 10 1963

showing

Partition of Pueblo Lot 1182

San Diego County
Made under decree of Superior
Court dated Sept. 15th 1893

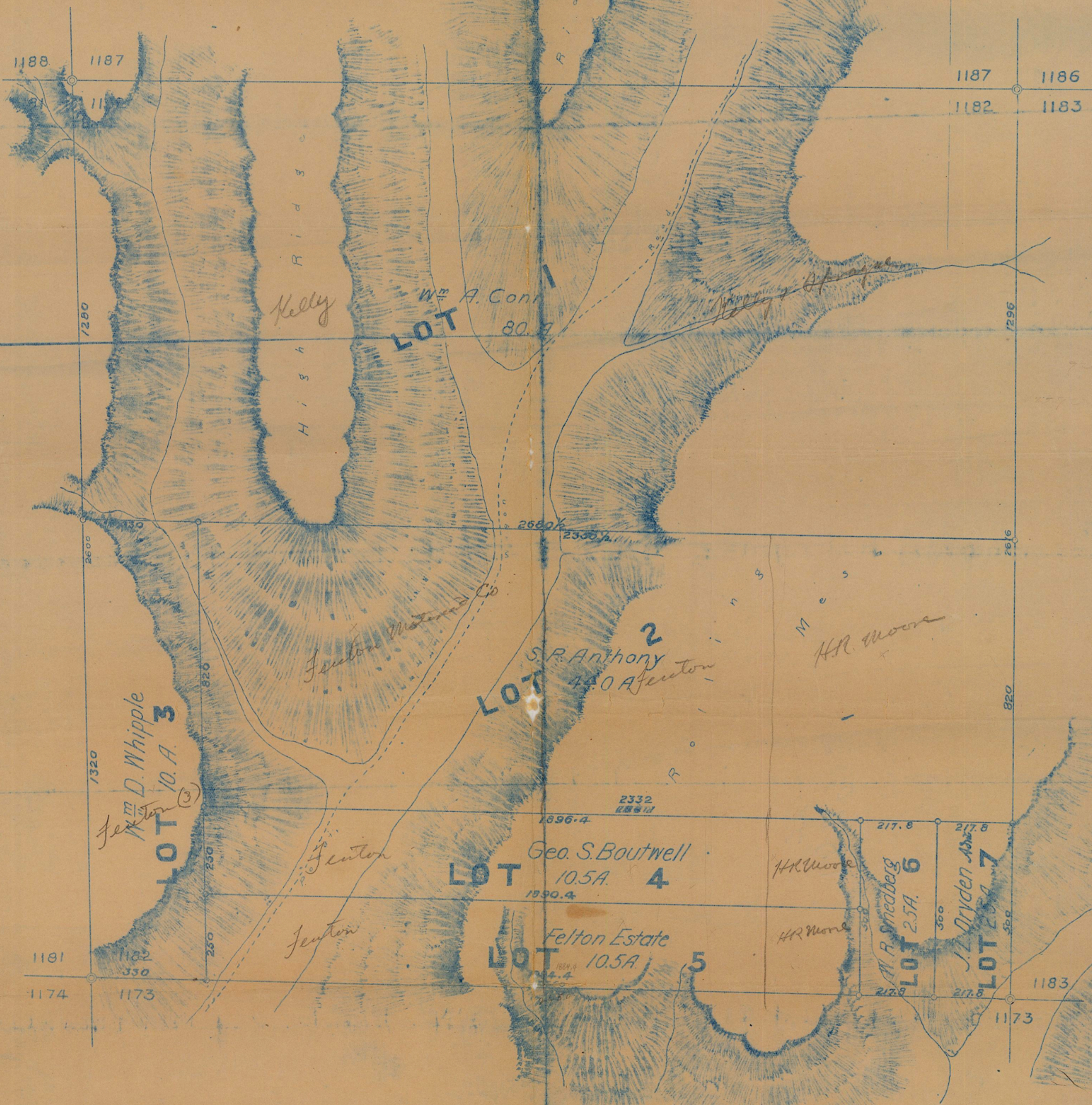
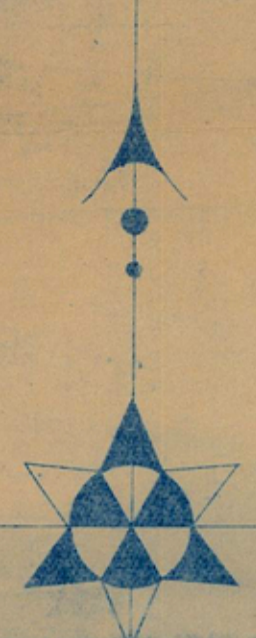
Scale 200 feet = 1 inch.

Referees

J. M. Shaw D. E.

~~Shaw & Co.~~

L. J. Mack



6481