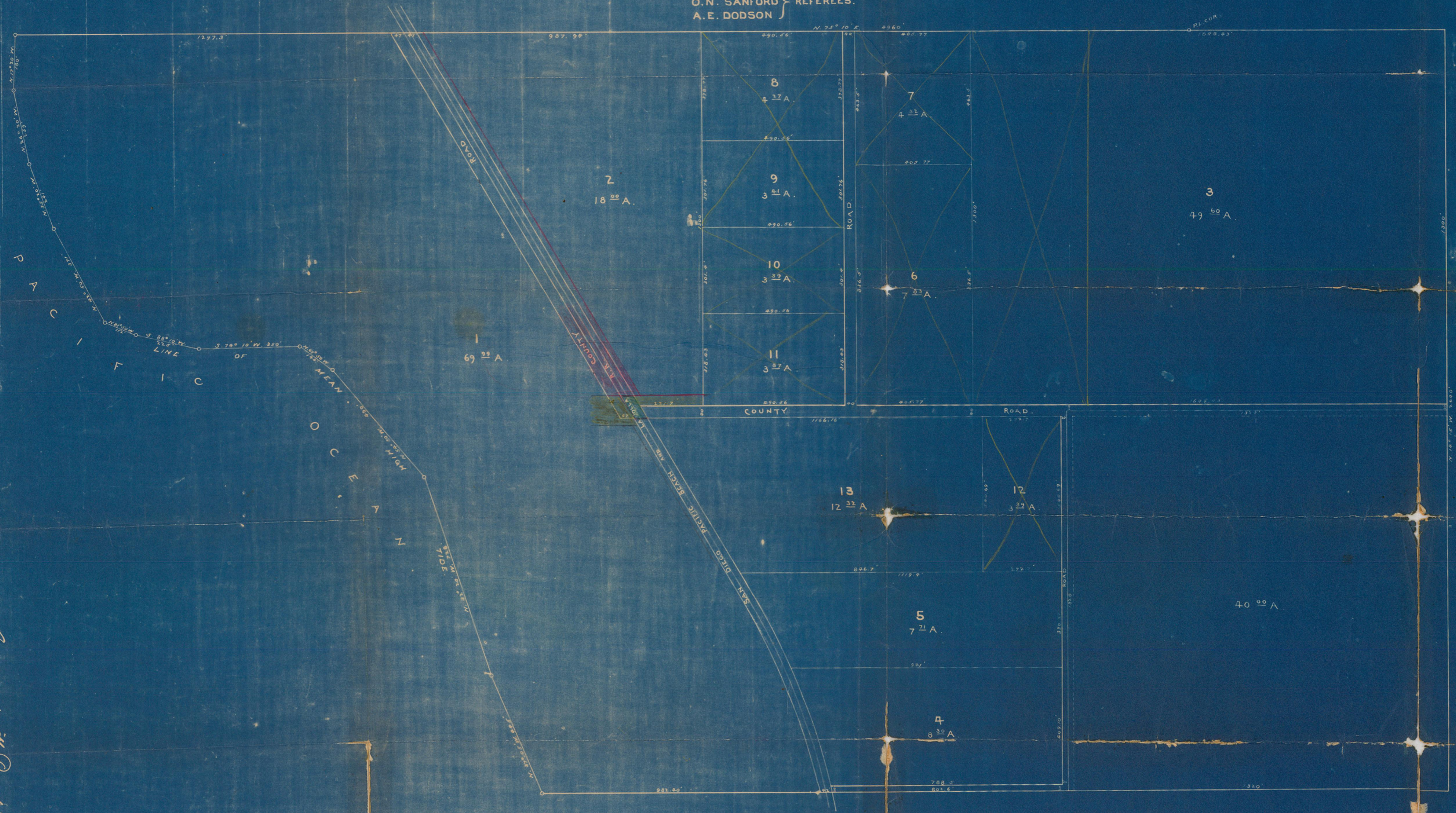


EXHIBIT "A". *500 8155*
MAP OF PUEBLO LOT 1783,
CITY OF SAN DIEGO.

MICROFILMED
 2014 1963

SURVEYED BY ORDER OF REFEREES IN THE CASE OF
PACIFIC BEACH CO., VS ANNIE M. HIGH ET AL.
 IN THE SUPERIOR COURT OF SAN DIEGO COUNTY,
 STATE OF CALIFORNIA.

SURVEYED AUG. 1896.
 SCALE 200' = 1" INCH.
 T. M. SHAW }
 O. N. SANFORD } REFEREES.
 A. E. DODSON }



*Examined with Records Copy
 filed Oct 9. 1897. Book 18, p 39*