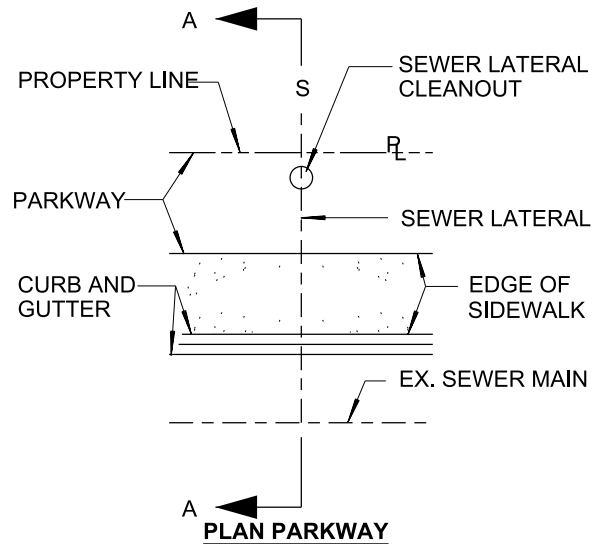
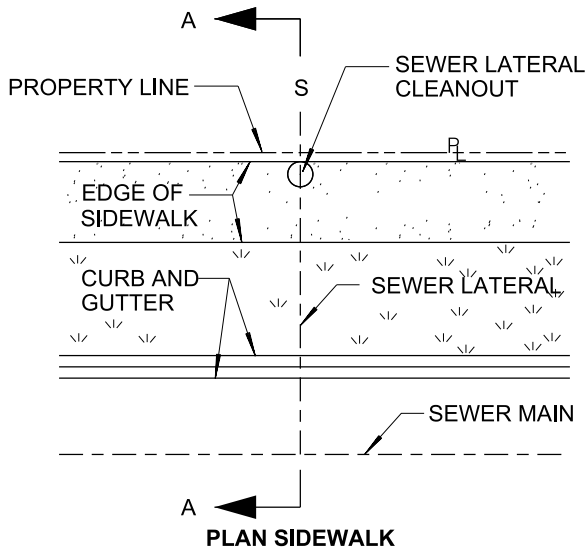


SECTION A-A



NOTES:

1. RISER AND CLEANOUT PLUG SHALL BE SAME DIAMETER AS SEWER LATERAL.
2. CLEANOUT SHALL BE LOCATED AS CLOSE AS POSSIBLE TO THE PROPERTY LINE, OR BEHIND THE PROPERTY LINE ON CITY'S RIGHT OF WAY.
3. CLEANOUTS INSTALLED ON SIDEWALKS OR WALKWAYS SHALL BE FLUSH TO THE FINISH SURFACE.
4. INSTALL WARNING/ IDENTIFICATION TAPE PER **SDM-105**.

REVISION	BY	APPROVED	DATE
DETAIL	SS	A. OSKOUJ	12/03
UPDATED	KA	J. NAGELVOORT	01/12
UPDATED	BB	J. NAGELVOORT	07/15
UPDATED	JN	J. NAGELVOORT	11/17
REDRAFTED	CD	J. NAGELVOORT	08/18
UPDATED	TP	J. NAGELVOORT	09/20

CITY OF SAN DIEGO – STANDARD DRAWING

**SEWER LATERAL CLEANOUT
ON SIDEWALK AND PARKWAY**

RECOMMENDED BY THE CITY
OF SAN DIEGO STANDARDS COMMITTEE

Chung 9/22/20
COORDINATOR R.C.E. 56523 DATE

DRAWING NUMBER **SDS-103**