

SECTION A-A

NOTES:

- ① WHEN BACKWATER DEVICE IS INSTALLED IN THE DRIVEWAY, SEE SHEET 2
- ② INSTALL VALVE BOX SO THAT IT IS FLUSH WITH PAVEMENT SURFACE OR 1" ABOVE FINISH GRADE (SOIL SURFACE).
- ③ PVC BACKWATER DEVICE AND ATTACHED PARTS SHALL BE PER THE CALIFORNIA PLUMBING CODE (CPC).
- ④ CLEANOUT PLUG (ABS) THREADED.
- ⑤ STANDARD 45° BEND.
- ⑥ THE BACKWATER DEVICE SHALL BE LOCATED AS CLOSE TO THE STRUCTURE AS REASONABLY POSSIBLE TO MINIMIZE THE DEPTH OF THE BACKWATER DEVICE.

SHEET 1 OF 2

REVISION	BY	APPROVED	DATE
DETAIL	CS	A. OSKOUJ	12/03
UPDATED	KA	J. NAGELVOORT	01/12
UPDATED	BB	J. NAGELVOORT	07/14
UPDATED	HM	J. NAGELVOORT	02/16
UPDATED	JN	J. NAGELVOORT	11/17

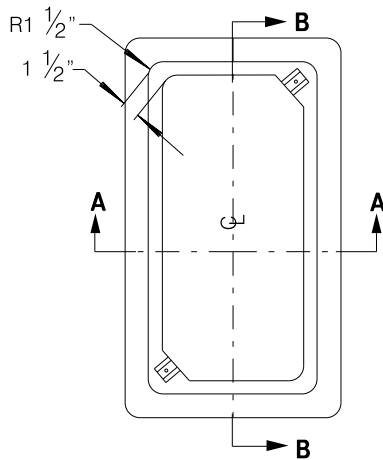
CITY OF SAN DIEGO – STANDARD DRAWING

RECOMMENDED BY THE CITY OF SAN DIEGO STANDARDS COMMITTEE

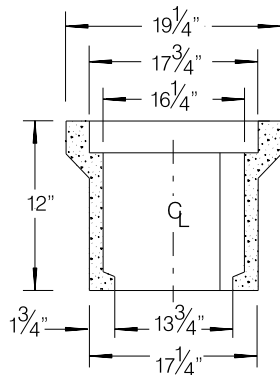
*Chung* 11/20/2017  
COORDINATOR R.C.E. 56523 DATE

**4" BACKWATER DEVICE**

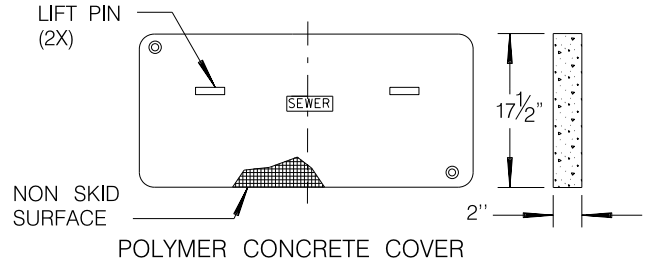
DRAWING NUMBER **SDS-104**



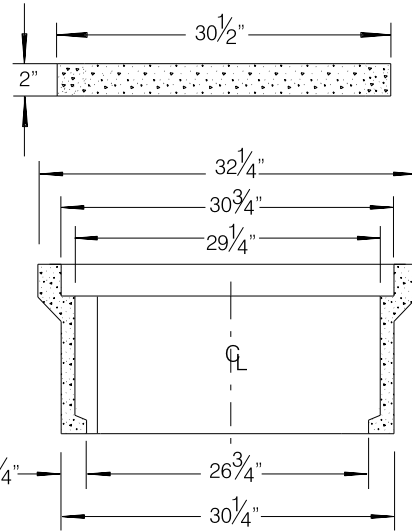
TOP VIEW



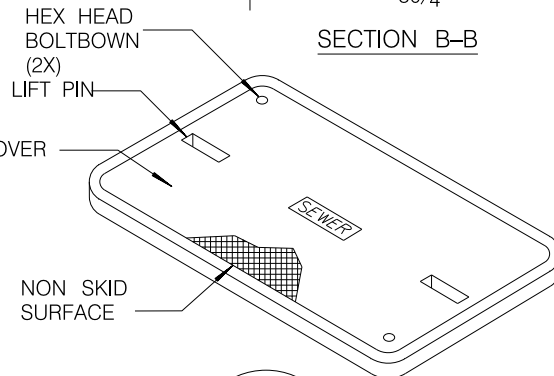
SECTION A-A



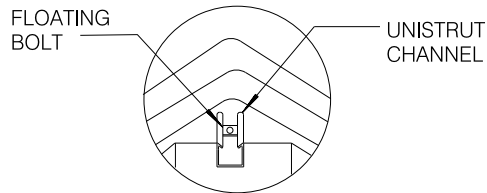
POLYMER CONCRETE COVER



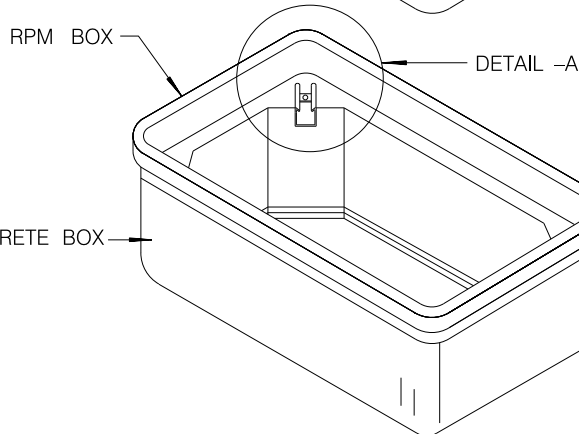
SECTION B-B



POLYMER CONCRETE COVER



DETAIL -A



CONCRETE BOX

NOTE:

1. THE BOX & COVER IS 10K LOAD RATED.

REVISION	BY	APPROVED	DATE
DETAIL	SS	A. OSKOUI	12/03
UPDATED	KA	J. NAGELVOORT	01/12
UPDATED	BB	J. NAGELVOORT	07/14
UPDATED	HM	J. NAGELVOORT	02/16
UPDATED	CD	J. NAGELVOORT	11/17

CITY OF SAN DIEGO - STANDARD DRAWING

RECOMMENDED BY THE CITY OF SAN DIEGO STANDARDS COMMITTEE

*Chungga* 11/20/2017  
COORDINATOR R.C.E. 56523 DATE

**4" BACKWATER DEVICE**

DRAWING NUMBER

**SDS-104**