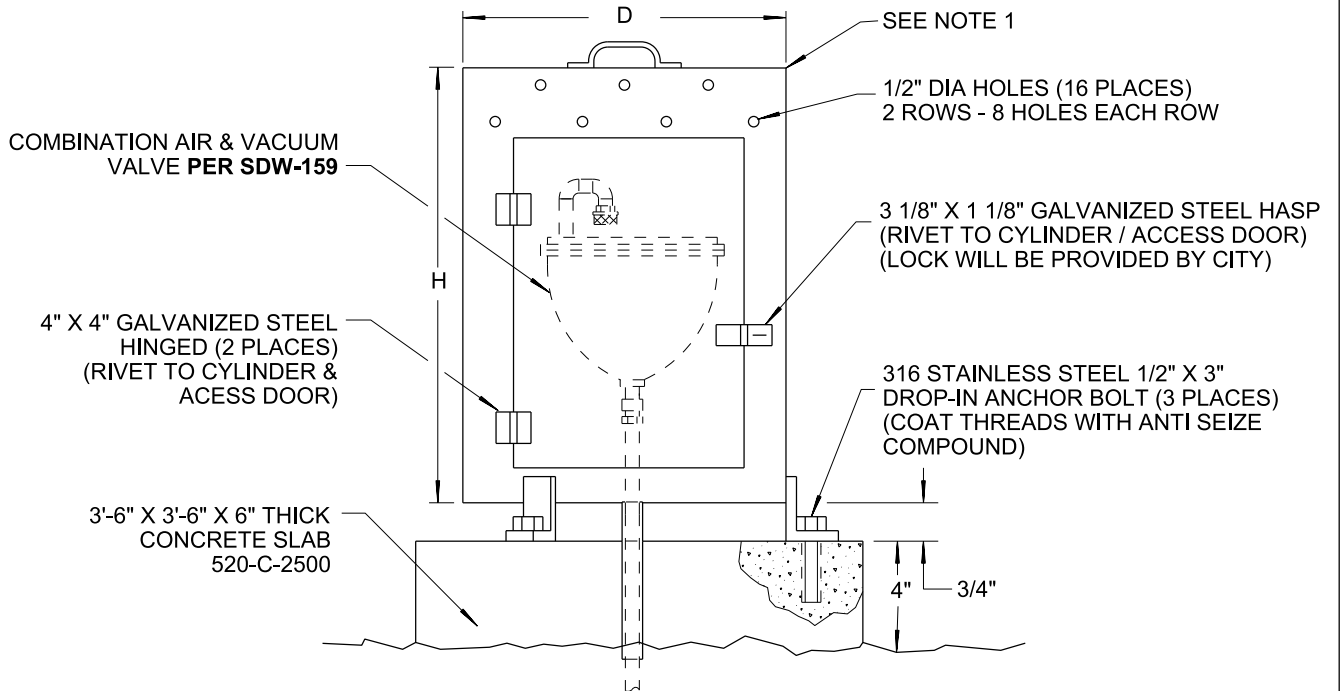


SEE NOTES ②

VALVE SIZE	D	H
1" & 2"	16"	24"
4"	24"	30"
6"	30"	36"

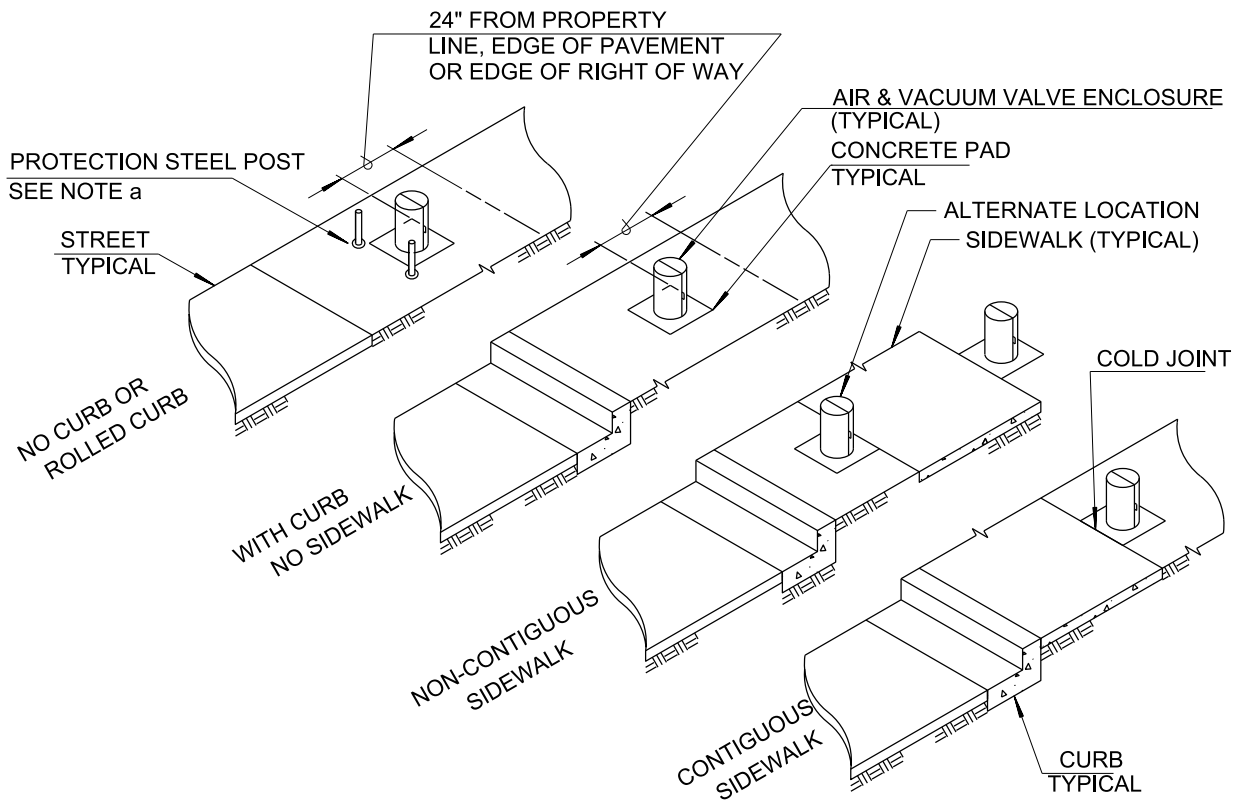


**NOTES:**

1. 3/16" STEEL ENCLOSURE WITH ACCESS DOOR, MISC. HARDWARE, CABINET AND HARDWARE SHOULD BE ZINC RICH EPOXY POWDER PRIMER (2-3 MIL DRY FILM THICKNESS) AND POLYESTER POWDER TOP COAT (2-3 MIL DRY FILM THICKNESS).
2. D AND H CHANGES ONLY **WITH APPROVAL OF THE CITY ENGINEER.**
3. **SEE SDW-159** FOR INSTALLATION OF COMBINATION AIR RELEASE & AIR/ VACUUM VALVE.
4. SEE LOCATION DETAILS ON SHEET 2.
5. FOR INSTALLATION IN LOCATIONS SUSCEPTIBLE TO CORROSION, USE OF POLYETHYLENE ENCLOSURES PER APPROVED MATERIALS LIST IS REQUIRED.

SHEET 1 OF 2

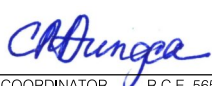
REVISION	BY	APPROVED	DATE	CITY OF SAN DIEGO - STANDARD DRAWING	RECOMMENDED BY THE CITY OF SAN DIEGO STANDARDS COMMITTEE
ORIGINAL		M. ROLLINGER	5-20-92		
NOTES	JS	A. OSKOUJ	1206	<b>AIR AND VACUUM VALVE ENCLOSURE &amp; LOCATION</b>	<i>Chungoa</i> COORDINATOR R.C.E. 56523
UPDATED	KA	J. NAGELVOORT	01/12		
UPDATED	TP	J. NAGELVOORT	08/18		
					8/23/18 DATE
					DRAWING NUMBER <b>SDW-117</b>



**NOTES:**

1. PROTECTION POSTS SHALL BE INSTALLED AS CALLED FOR ON THE PLANS OR AS DIRECTED BY THE ENGINEER **PER WM-04**.
2. AIR & VACUUM VALVES & APPURTENANCES INSTALLED FOR THE USE OF RECYCLED WATER SHALL BE IDENTIFIED AS DESCRIBED IN THE SPECIFICATIONS.

SHEET 2 OF 2

REVISION	BY	APPROVED	DATE	CITY OF SAN DIEGO – STANDARD DRAWING	RECOMMENDED BY THE CITY OF SAN DIEGO STANDARDS COMMITTEE
ORIGINAL	KA	J. NAGELVOORT	01/12		
UPDATED	TP	J. NAGELVOORT	08/18	<b>AIR AND VACUUM VALVE ENCLOSURE &amp; LOCATION</b>	 COORDINATOR R.C.E. 56523 8/23/18 DATE
				DRAWING NUMBER	<b>SDW-117</b>