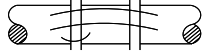
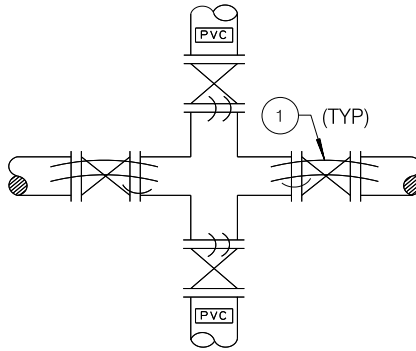


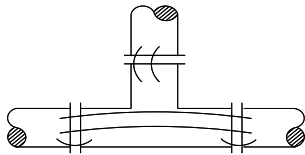
CROSS



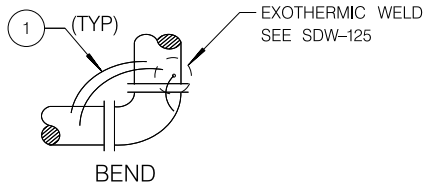
SPOOL



VALVE CROSSING

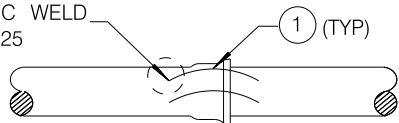


TEE

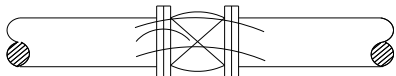


BEND

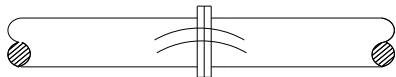
EXOTHERMIC WELD
SEE SDW-125



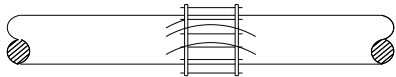
BELL AND SPIGOT PIPE JOINT



FLANGED VALVE



FLANGED OR MECHANICAL PIPE JOINT



FLEXIBLE COUPLING PIPE JOINT

NOTES:

1. ALL BOND CABLE SHALL BE INSTALLED AT MINIMUM LENGTH.
2. BOND CABLES SHALL NOT BE INSTALLED ACROSS INSULATING JOINTS.
3. ONE ADDITIONAL CABLE SHALL BE REQUIRED FOR PIPE DIAMETERS FROM 36" TO 48" AND 2 MORE FOR DIAMETERS LARGER THAN 48".
4. WELD BEFORE APPLYING INTERNAL COATING.

① BOND CABLE: STRANDED COPPER HMWPE INSULATION.
SIZING: FOR PIPE 12" DIAMETER AND LESS - USE AWG#8 (MIN).
FOR PIPE DIAMETER GREATER THAN 12" - USE AWG #4 (MIN).

REVISION	BY	APPROVED	DATE
ORIGINAL	BM	A. OSKOUI	12/03
NOTES	BM	A. OSKOUI	12/06
UPDATED	KA	J. NAGELVOORT	01/12
UPDATED	EF	J. NAGELVOORT	11/17

CITY OF SAN DIEGO - STANDARD DRAWING

**JOINT BONDING OF NON-WELDED
PIPE JOINTS & FITTINGS**

RECOMMENDED BY THE CITY OF SAN DIEGO
STANDARDS COMMITTEE

Chungga 11/20/2017
COORDINATOR R.C.E. 56523 DATE

DRAWING NUMBER **SDW-122**