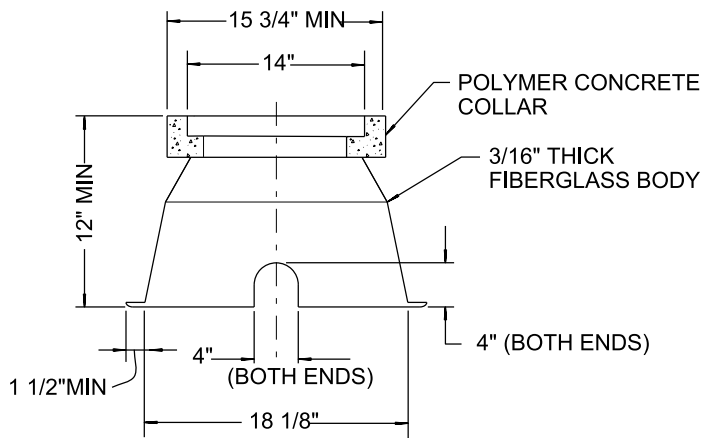
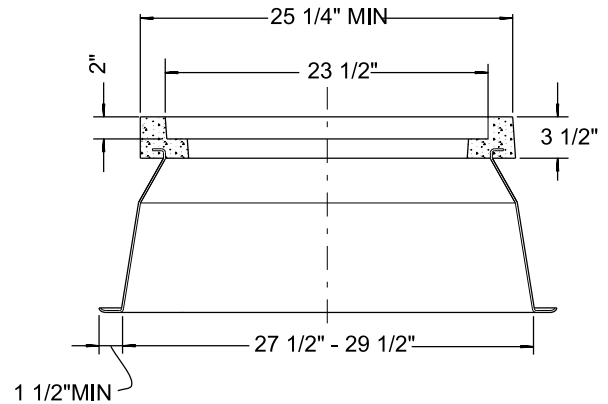


**PLAN VIEW**



**SECTION A-A**



**SECTION B-B**

**NOTES:**

1. METER BOX SHALL BE POLYMER CONCRETE OR POLYMER COMPOSITE MATERIAL IN ACCORDANCE WITH THE CITY'S APPROVED MATERIAL LIST (AML).
2. BOX AND COVER SHALL WITHSTAND AASHTO H-20 (ASTM C857).
3. FOR COVER DETAIL, **SEE SDW-136**.
4. **SEE SDW-137** FOR INSTALLATION PROCEDURE.

| REVISION  | BY | APPROVED      | DATE  |
|-----------|----|---------------|-------|
| ORIGINAL  | SS | A. OSKOUJ     | 12/03 |
| UPDATED   | KA | J. NAGELVOORT | 01/12 |
| UPDATED   | HM | J. NAGELVOORT | 02/16 |
| REDRAFTED | CD | J. NAGELVOORT | 09/18 |
| UPDATED   | TP | J. NAGELVOORT | 09/19 |

CITY OF SAN DIEGO – STANDARD DRAWING

**WATER METER BOX  
FOR 1" WATER SERVICE**

RECOMMENDED BY THE CITY  
OF SAN DIEGO STANDARDS COMMITTEE

*Chungpa* 9/11/19  
COORDINATOR R.C.E. 56523 DATE

DRAWING NUMBER **SDW-134**