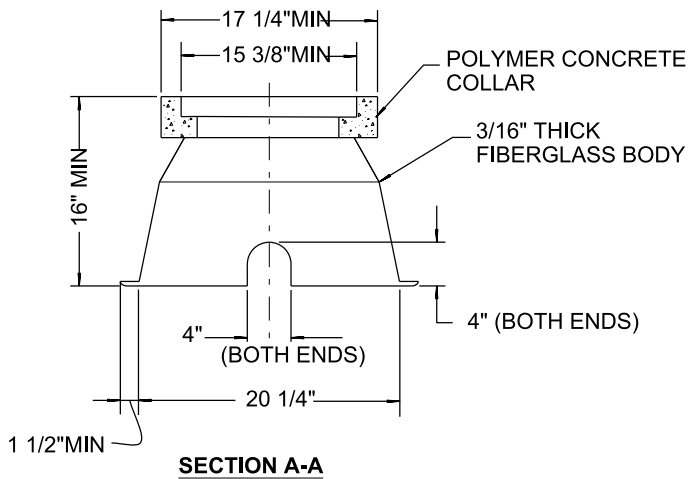
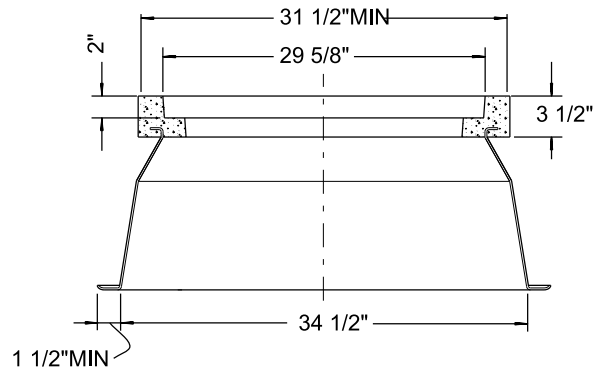


PLAN VIEW



SECTION A-A



SECTION B-B

NOTES:

1. METER BOX SHALL BE POLYMER CONCRETE OR POLYMER COMPOSITE MATERIAL IN ACCORDANCE WITH THE CITY'S APPROVED MATERIAL LIST (AML).
2. BOX AND COVER SHALL WITHSTAND AASHTO H-20 (ASTM C857).
3. FOR COVER DETAIL, **SEE SDW-136**.
4. **SEE SDW-137** FOR INSTALLATION PROCEDURE.

REVISION	BY	APPROVED	DATE
ORIGINAL	SS	A. OSKOU	12/03
UPDATED	KA	J. NAGELVOORT	01/12
REDRAFTED	CD	J. NAGELVOORT	09/18
UPDATED	TP	J. NAGELVOORT	09/19

CITY OF SAN DIEGO – STANDARD DRAWING

**WATER METER BOX
FOR 2" WATER SERVICE**

RECOMMENDED BY THE CITY
OF SAN DIEGO STANDARDS COMMITTEE

Chungpa 9/11/19
COORDINATOR R.C.E. 56523 DATE

DRAWING NUMBER **SDW-135**