

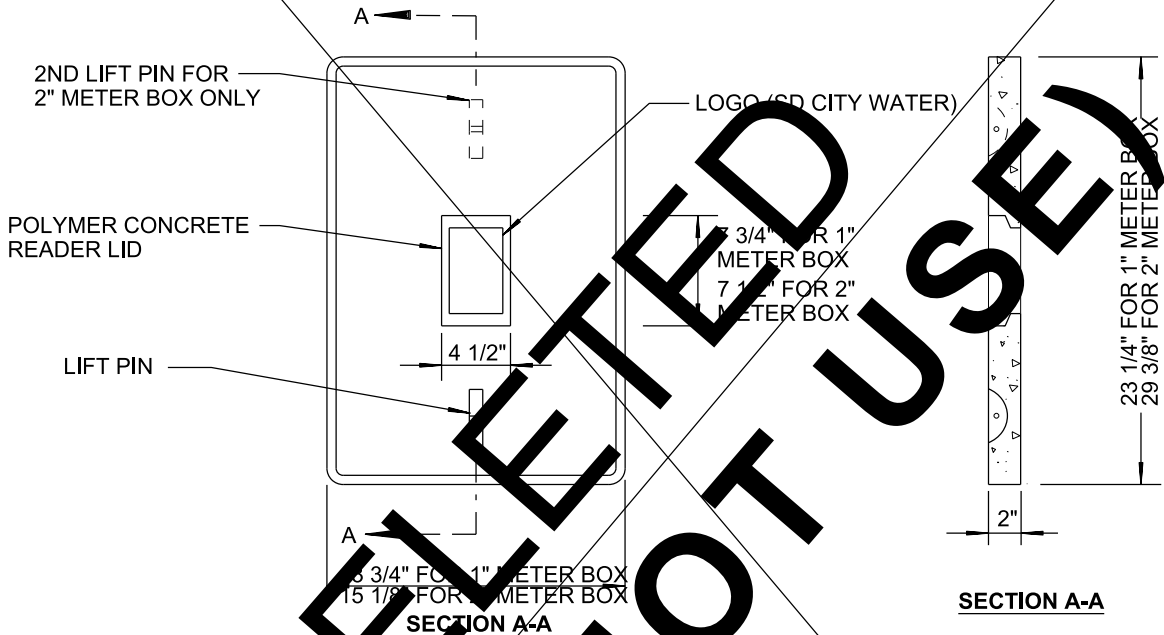
SOLID COVER FOR TRAVELED WAY AND OUTSIDE TRAVELLED WAY

NOTES:

1. COVER SHALL WITHSTAND AASHTO H-20 (ASTM C857).
2. COVER SHALL HAVE NON-SKID SURFACE.
3. COVER SHALL BE POLYMER CONCRETE OR POLYMER COMPOSITE MATERIAL IN ACCORDANCE WITH THE CITY'S APPROVED MATERIALS LIST (AML).

REVISION	BY	APPROVED	DATE	CITY OF SAN DIEGO – STANDARD DRAWING	RECOMMENDED BY THE CITY OF SAN DIEGO STANDARDS COMMITTEE
ORIGINAL	SS	A. OSKOUJ	1203		WATER METER BOX COVER FOR 1" OR 2" WATER SERVICE
UPDATED	KA	J. NAGELVOORT	01'12		
UPDATED	BB	J. NAGELVOORT	06'14		
REDRAFTED	CD	J. NAGELVOORT	09'18		
UPDATED	TP	J. NAGELVOORT	09'19	DRAWING NUMBER SDW-136	

DELETED
 (DO NOT USE)



DROP IN COVER (OUTSIDE TRAVELLED WAY)

NOTES

1. COVER SHALL WITHSTAND AASHTO H-10 (ASTM C857-85).
2. COVER SHALL HAVE NON-SKID SURFACE.
3. IF LID IS MANUFACTURED BY CDR, READER SHALL BE 6" X 9".


SHEET 2 OF 2

REVISION	BY	APPROVED	DATE
ORIGINAL	SS	A. OSKOUJ	12/03
UPDATED	KA	J. NAGELVOORT	01/12
UPDATED	BB	J. NAGELVOORT	06/14
REDRAFTED	CD	J. NAGELVOORT	09/18
DELETED	TP	J. NAGELVOORT	09/19

CITY OF SAN DIEGO – STANDARD DRAWING

METER BOX POLYMER CONCRETE COVER

RECOMMENDED BY THE CITY
OF SAN DIEGO STANDARDS COMMITTEE


 9/11/19
 COORDINATOR R.C.E. 56523 DATE

DRAWING NUMBER **SDW-136**