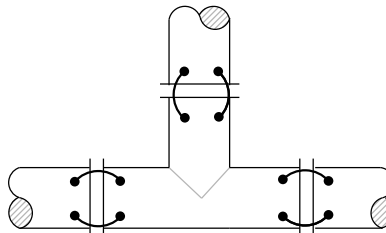
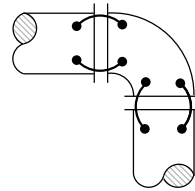


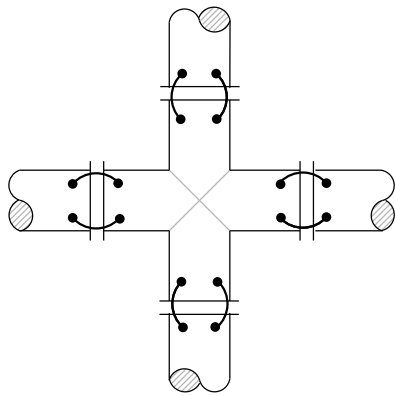
VALVE CROSSING



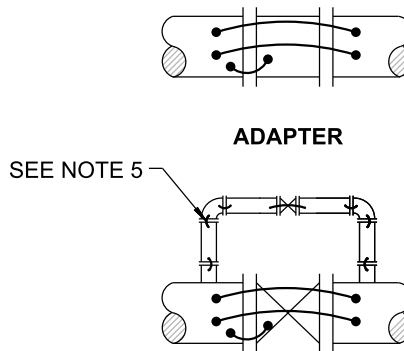
TEE



BEND

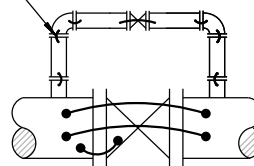


CROSS



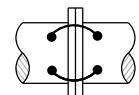
ADAPTER

SEE NOTE 5

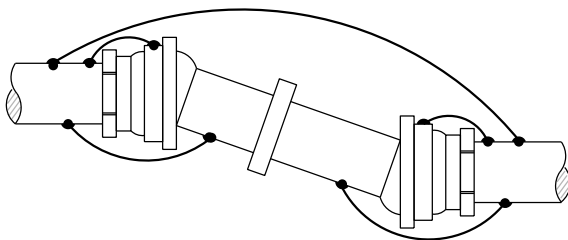


VALVE WITH BYPASS

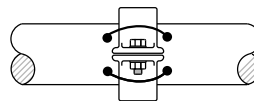
- MATERIAL LIST:**
- ① BOND WIRE: AWG #4 STRANDED COPPER WITH HMWPE INSULATION
 - ② EXOTHERMIC WELD OR PIN BRAZE PER SDW-125
 - ③ METALLIC PIPE



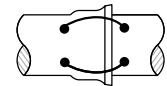
FLANGE



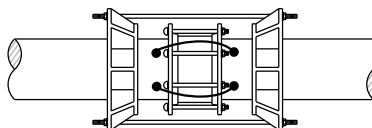
FLEXIBLE JOINT



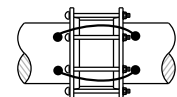
VICTAULIC COUPLING



PUSH ON RUBBER GASKETED PIPE JOINT



RESTRAINED SLEEVE COUPLING



SLEEVE COUPLING

NOTES:

1. ALL BOND WIRES SHALL BE INSTALLED AT MINIMUM LENGTHS.
2. BOND WIRES SHALL NOT BE INSTALLED ACROSS INSULATING JOINTS.
3. FOR PIPE DIAMETERS 36" AND LARGER, ONE ADDITIONAL BOND WIRE IS REQUIRED FOR MAINLINE BONDING.
4. THE MINIMUM PIPE WALL THICKNESS FOR EXOTHERMIC WELDING IS 0.133". OTHERWISE PIN BRAZED CONNECTIONS ARE REQUIRED.
5. ONLY ONE BOND WIRE IS REQUIRED WHEN BONDING VALVE BYPASS PIPING.
6. BOND WIRES SHALL BE SPACED 5" APART, MINIMUM.
7. WAX TAPE ALL BURIED BOLTED FITTINGS AWWA C217. OVERLAPPING THE SHOP APPLIED COATING A MINIMUM OF 3 INCHES.

REVISION	BY	APPROVED	DATE
ORIGINAL	BM	A. OSKOUJ	1203
NOTES	BM	A. OSKOUJ	1206
UPDATED	KA	J. NAGELVOORT	01/12
UPDATED	EF	J. NAGELVOORT	11/17
REDRAFTED	CD	J. NAGELVOORT	09/18
UPDATED	EF	J. NAGELVOORT	10/19

CITY OF SAN DIEGO - STANDARD DRAWING

JOINT BONDING OF NON-WELDED PIPE JOINTS & FITTINGS

RECOMMENDED BY THE CITY OF SAN DIEGO STANDARDS COMMITTEE

CA Dungea 10/10/19
COORDINATOR R.C.E. 56523 DATE

DRAWING NUMBER

SDW-122