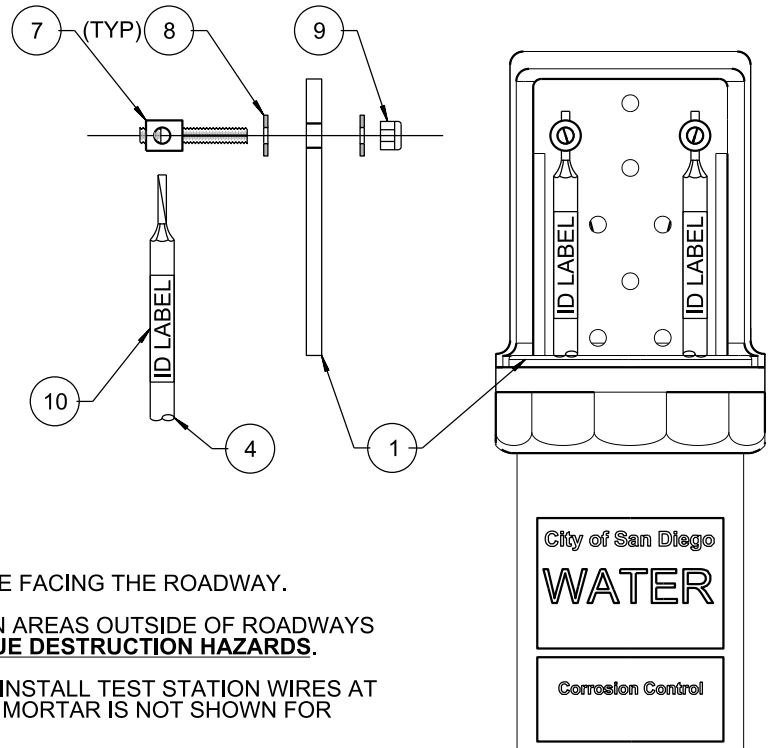


**LIGHT DUTY  
POST-MOUNTED TEST STATION**

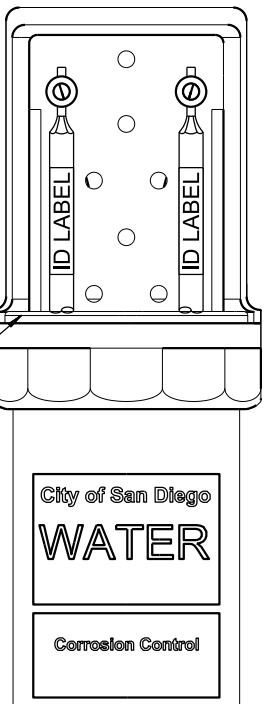
**MATERIAL LIST**

- ① BIG FINK POST-MOUNTED TEST STATION  
3" Ø X 72" POST WITH TEE ANCHOR  
BLUE CAP FOR WATER  
PURPLE CAP FOR RECYCLED WATER  
GREEN CAP FOR WASTE WATER
- ② DECAL **PER SDW-132** TO BE PROVIDED BY THE CITY,  
**SEE NOTE 1**
- ③ 3/4" Ø x 10" SCH 40 ELECTRICAL CONDUIT PLACED  
THROUGH THE 3" Ø POST
- ④ 2-#8 AWG STR COPPER HMWPE WIRE WITH 18" OF  
SLACK WIRE AT PIPE CONNECTION AND 18" OF SLACK  
WIRE INSIDE PVC POST
- ⑤ EXOTHERMIC WELD OR PIN BRAZE  
AT NEAREST PIPE JOINT **PER SDW-125**
- ⑥ METALLIC PIPING
- ⑦ STAINLESS STEEL BINDING POST  
PROMARK #PM-TS3-LUG, TINKER & RAZOR #073-070,  
**OR APPROVED EQUAL**
- ⑧ 1/4" STAINLESS STEEL FLAT WASHER
- ⑨ 1/4-20 STAINLESS STEEL NYLON INSERT LOCK NUT
- ⑩ WIRE ID LABEL **PER SDW-131**



**NOTES:**

- 1. AFFIX TWO DECALS 180 DEGREES APART WITH ONE FACING THE ROADWAY.
- 2. THIS POST MOUNTED STATION IS FOR USE ONLY IN AREAS OUTSIDE OF ROADWAYS THAT **ARE NOT SUBJECT TO VANDALISM OR UNIQUE DESTRUCTION HAZARDS.**
- 3. TO MINIMIZE PIPE COATING DAMAGE AND REPAIR, INSTALL TEST STATION WIRES AT NEAREST PIPE JOINT AS SHOWN. EXTERIOR JOINT MORTAR IS NOT SHOWN FOR CLARITY.
- 4. IF TEST STATION IS OFFSET FROM PIPE CENTERLINE, INSTALL WIRES **PER SDW-126.**



REVISION	BY	APPROVED	DATE
ORIGINAL	BM	A. OSKOU	12/03
NOTES	BM	A. OSKOU	12/06
UPDATED	KA	J. NAGELVOORT	01/12
REDRAFTED	CD	J. NAGELVOORT	09/18
UPDATED	EF	J. NAGELVOORT	10/19

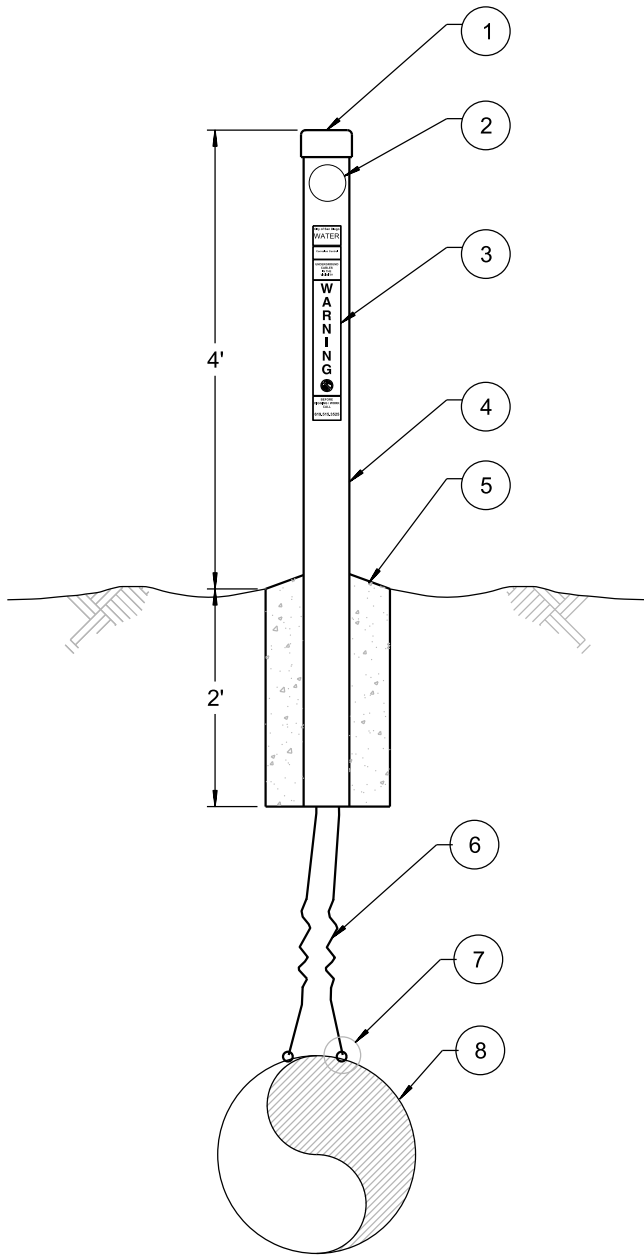
CITY OF SAN DIEGO – STANDARD DRAWING

**ABOVE GRADE CATHODIC PROTECTION  
TEST STATION INSTALLATION  
FOR UNDEVELOPED AREAS**

RECOMMENDED BY THE CITY  
OF SAN DIEGO STANDARDS COMMITTEE

*Chungga* 10/10/19  
COORDINATOR R.C.E. 56523 DATE

DRAWING NUMBER **SDW-127**



**HEAVY DUTY  
POST-MOUNTED TEST STATION**

**MATERIAL LIST**

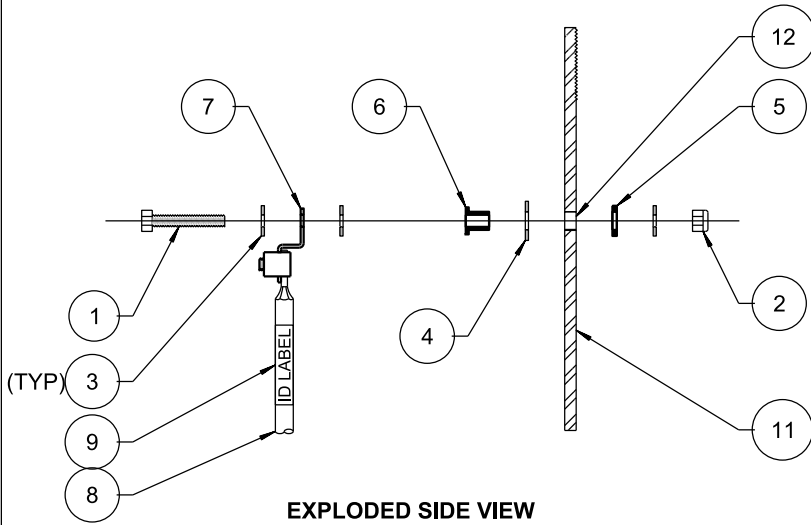
- ① 4" Ø GALV THREADED END CAP
- ② WIRE TERMINALS, **SEE SHEET 3**
- ③ **DECAL PER SDW-132 TO BE PROVIDED BY THE CITY, SEE NOTE 1**
- ④ 4" Ø x 6' GALV STEEL PIPE WITH CHAFFING BUSHING SCH 40 ASTM A53 STEEL
- ⑤ 12" Ø x 24" CONCRETE FOOTING 560-C-3250
- ⑥ #8 AWG STR COPPER HMWPE WIRE ASTM B3, ASTM B8 ASTM D1248 TYPE 1, CLASS C, GR. 5. WITH 18" SLACK WIRE AT PIPE AND IN POST
- ⑦ EXOTHERMIC WELD OR PIN BRAZE **PER SDW-125**
- ⑧ METALLIC PIPE

**NOTES:**

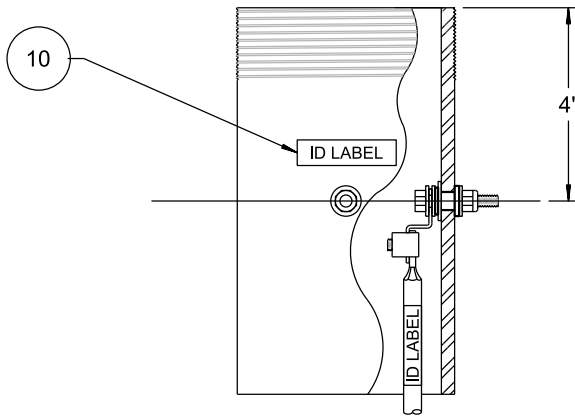
1. AFFIX TWO DECALS 180 DEGREES APART WITH ONE FACING THE ROADWAY.
2. THIS POST MOUNTED STATION IS FOR USE ONLY IN AREAS OUTSIDE OF ROADWAYS THAT ARE SUBJECT TO VANDALISM OR UNIQUE DESTRUCTION HAZARDS.
3. TO MINIMIZE PIPE COATING DAMAGE AND REPAIR, INSTALL TEST STATION AT NEAREST PIPE JOINT.
4. IF TEST STATION IS OFFSET FROM PIPE CENTERLINE, INSTALL WIRES **PER SDW-126**.
5. **SEE SHEET 3** FOR WIRE TERMINATION DETAIL.

SHEET 2 OF 3

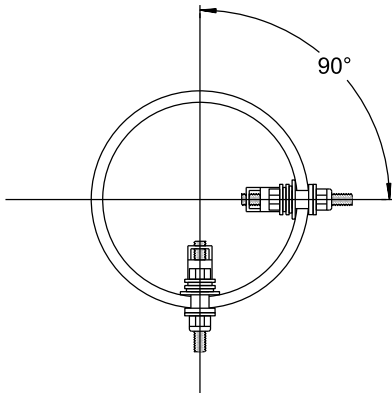
REVISION	BY	APPROVED	DATE	CITY OF SAN DIEGO – STANDARD DRAWING	RECOMMENDED BY THE CITY OF SAN DIEGO STANDARDS COMMITTEE
ORIGINAL	BM	A. OSKOUJ	12/03		<b>ABOVE GRADE CATHODIC PROTECTION TEST STATION INSTALLATION FOR UNDEVELOPED AREAS</b>
NOTES	BM	A. OSKOUJ	12/06	COORDINATOR R.C.E. 56523 DATE	
UPDATED	KA	J. NAGELVOORT	01/12	DRAWING NUMBER	
REDRAFTED	CD	J. NAGELVOORT	09/18	<b>SDW-127</b>	
UPDATED	EF	J. NAGELVOORT	10/19		



**EXPLODED SIDE VIEW**



**SIDE VIEW**



**TOP VIEW**

**HEAVY-DUTY POST-MOUNTED TEST STATION  
WIRE TERMINATION DETAIL**

**MATERIAL LIST**

- 1 316 SS TAP HEX BOLT  
1/4"-20 x 1-1/2"
- 2 316 SS NYLON INSERT LOCK NUT  
1/4"-20
- 3 316 SS FLAT WASHER  
NOMINAL SIZE 1/4"  
OD=0.630"; THK=0.065"
- 4 316 SS FLAT WASHER  
NOMINAL SIZE 3/8"  
OD=0.810"; THK=0.065"
- 5 NYLON FLAT WASHER  
FW 375-93  
OD=0.625"; ID=0.380; THK=0.093"
- 6 NYLON SHOULDER WASHER  
SWS 1162  
SHOULDER OD=0.560"; THK=0.062"  
SHANK L=0.421"; OD=0.375"  
SHANK ID=0.255"; THK=0.060"
- 7 COPPER MECHANICAL LUG  
DIRECT BURIAL  
ILSCO SLU-70DB
- 8 #8 AWG STR COPPER WIRE WITH HMWPE  
INSULATION  
ASTM B3, ASTM B8,  
ASTM D1248 TYPE 1,  
CLASS C, GR. 5.
- 9 WIRE ID LABEL **PER SDW-131**
- 10 POST WIRE ID LABEL  
18 POINT FONT; MATCH LABEL A PPLIED TO  
WIRE
- 11 4" Ø GALV STEEL PIPE  
SCH 40 ASTM A53
- 12 25/64" Ø HOLE

**NOTES:**

- 1. APPLY NO-OX GREASE TO  
INTERNAL POST HARDWARE

SHEET 3 OF 3

REVISION	BY	APPROVED	DATE
ORIGINAL	BM	A. OSKOUJ	12/03
NOTES	BM	A. OSKOUJ	12/06
UPDATED	KA	J. NAGELVOORT	01/12
REDRAFTED	CD	J. NAGELVOORT	09/18
UPDATED	EF	J. NAGELVOORT	10/19

CITY OF SAN DIEGO – STANDARD DRAWING

**ABOVE GRADE CATHODIC PROTECTION  
TEST STATION INSTALLATION  
FOR UNDEVELOPED AREAS**

RECOMMENDED BY THE CITY  
OF SAN DIEGO STANDARDS COMMITTEE

*CA Dungea* 10/10/19  
COORDINATOR R.C.E. 56523 DATE

DRAWING  
NUMBER **SDW-127**